

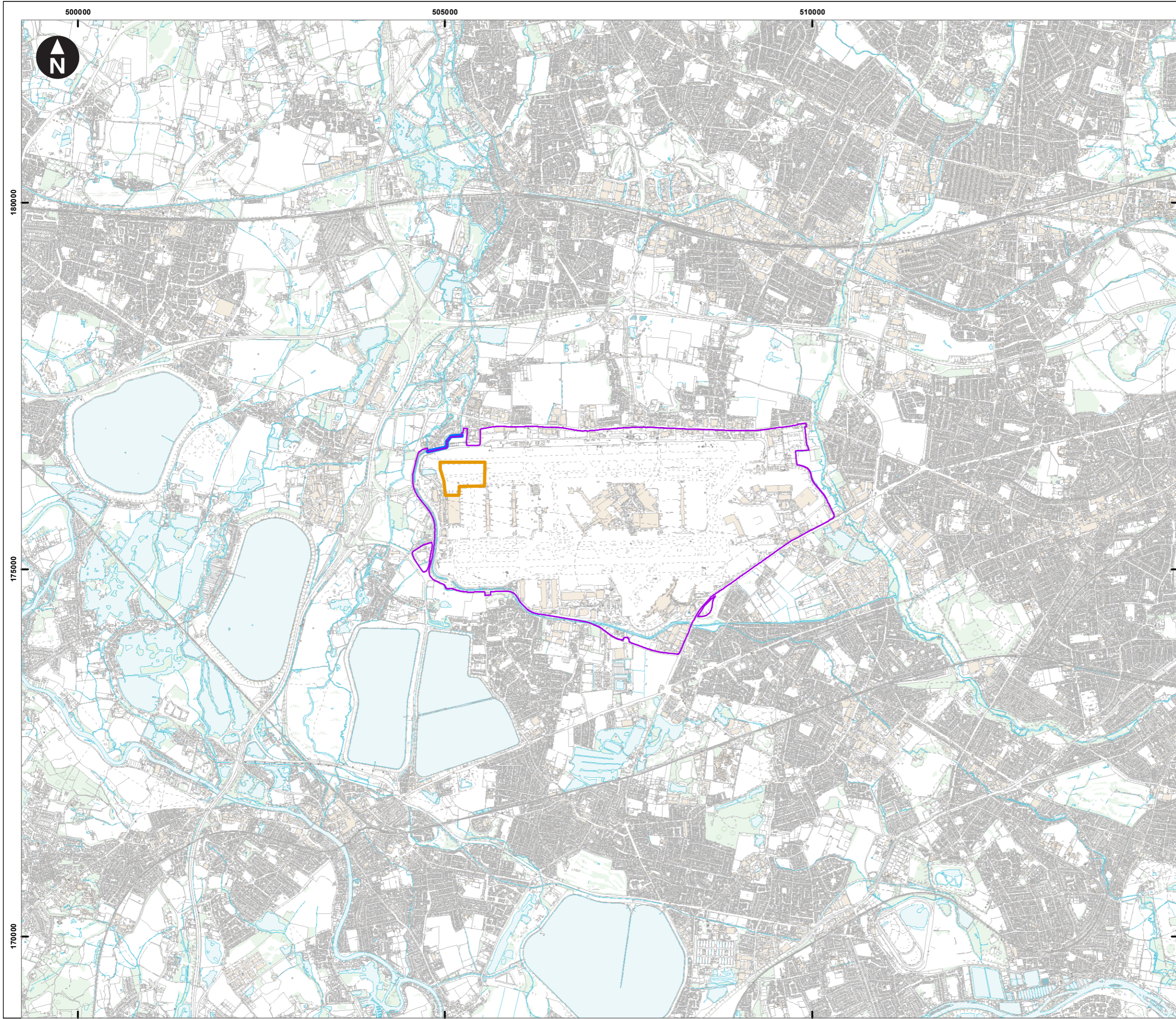


***EASTERLY ALTERNATION
INFRASTRUCTURE PROJECT***

***Environmental Impact Assessment
Environmental Statement, Volume III
Appendix 1.5 Scoping Report
Figures
(Part 1 of 2)***

Document Reference: 19309-XX-EC-XXX-000024

October 2024



- Key
- Heathrow boundary
 - Indicative area for new Runway
Access Taxiway(s), Connector
Taxiways and changes to aircraft
stands
 - Indicative footprint of potential
acoustic barrier

0 500 1,000 1,500 2,000 2,500 m
 Scale at A3: 1:50,000
 © Crown copyright and database rights 2023 Ordnance Survey
 0100031673



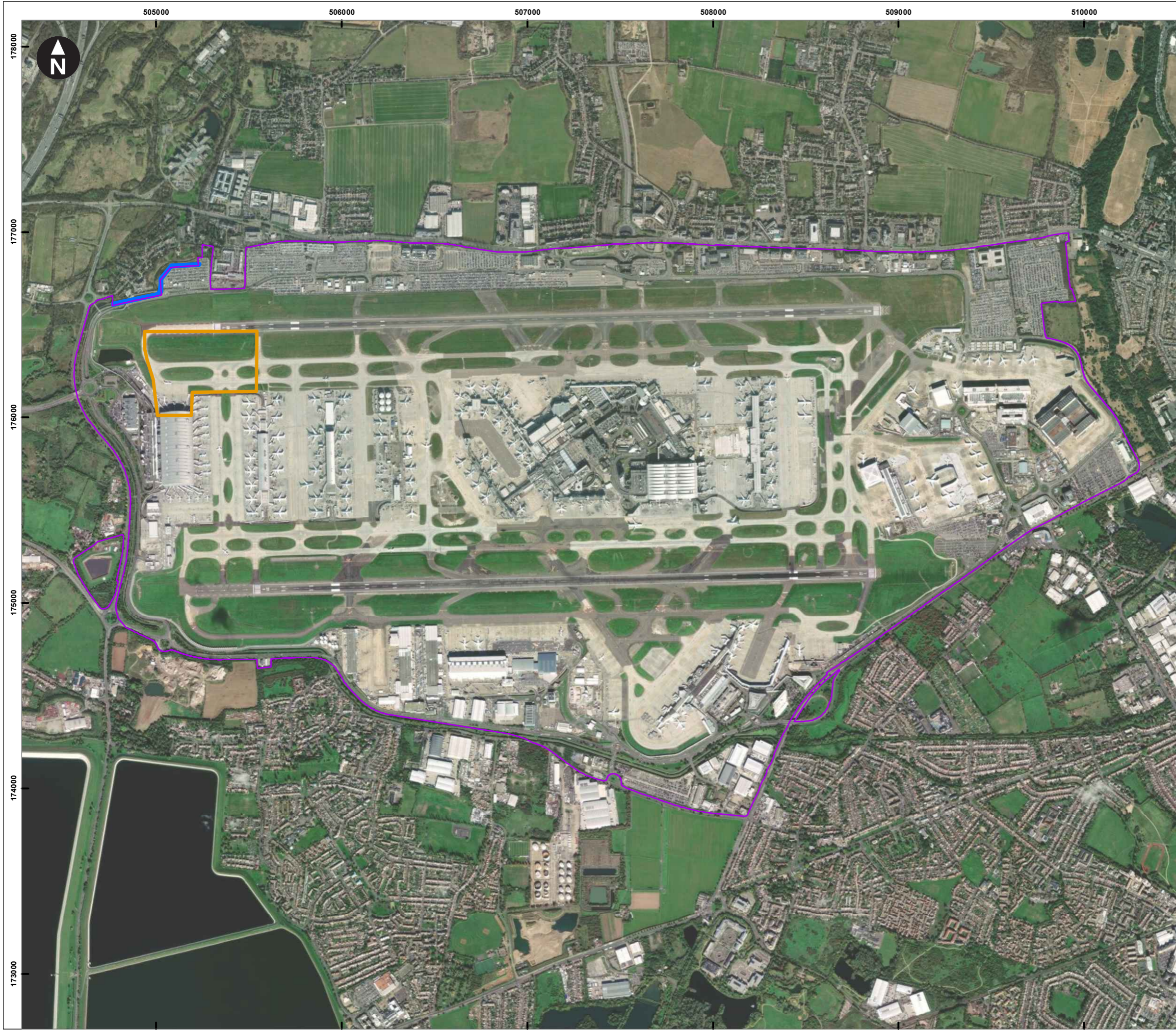
Heathrow Easterly Alteration Infrastructure
 Project
 Scoping Report

Figure 2.1
 Site location plan

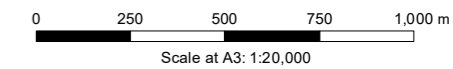


October 2023

\\at15-fs7.global.amec.com\AT15-FS7-Shared2\Projects\853399-EC EA TRA Heathrow Airport_Easterly Alteration Project\Deliver Stage\ID Design_Technical\Drawings\GIS\853399-WSPE-XX-XX-FG-MD-00002_S0_P0.02.mxd



- Key
- Heathrow boundary
 - Indicative area for new Runway Access Taxiway(s), Connector Taxiways and changes to aircraft stands
 - Indicative footprint of potential acoustic barrier



Aerial image supplied by Heathrow Airport

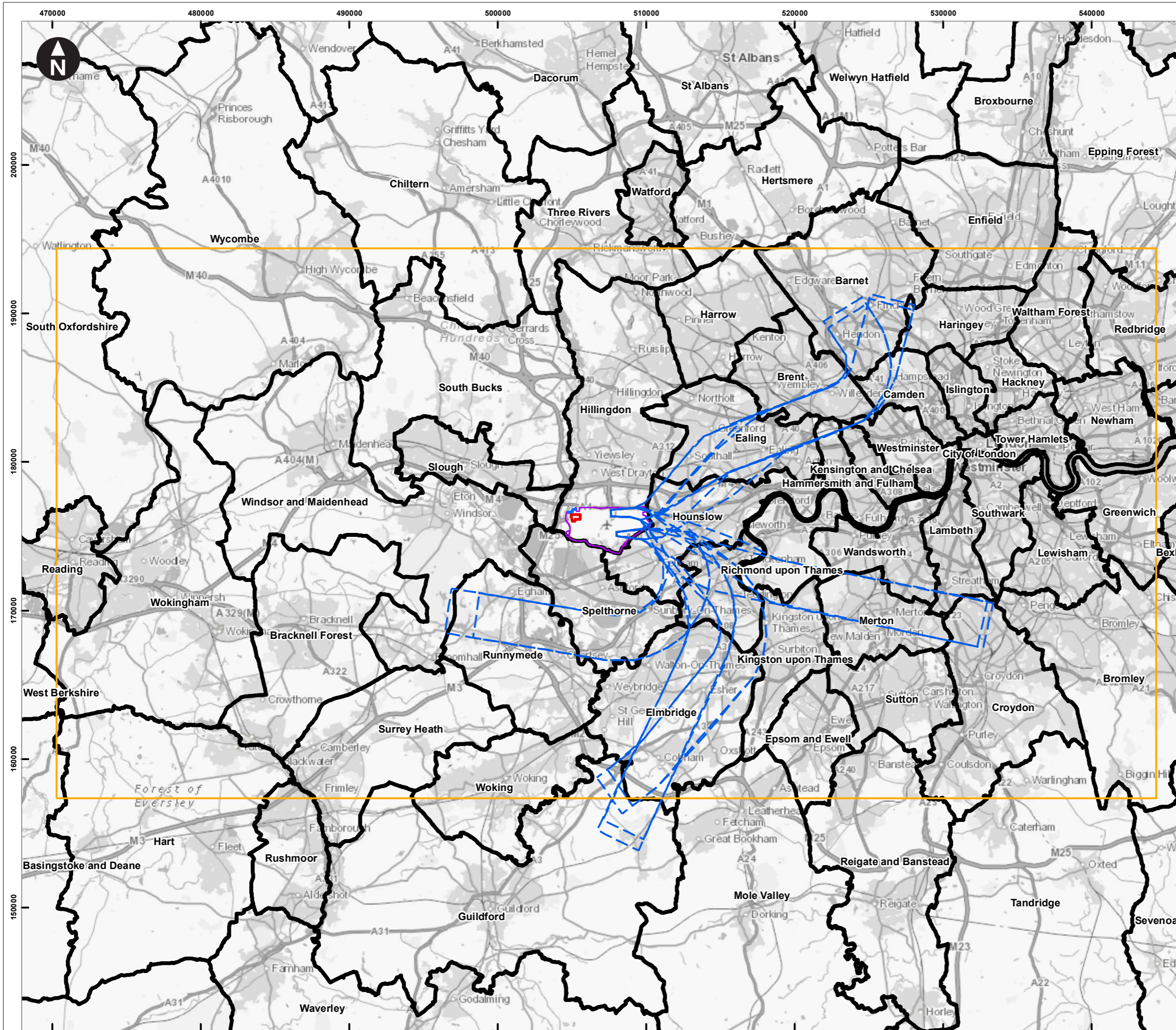
Heathrow

Heathrow Easterly Alteration Infrastructure Project
Scoping Report

Figure 2.2
Location of the Proposed Development within Heathrow Airport's boundary

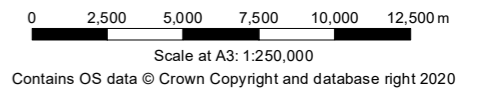


October 2023



Key

- Heathrow boundary
- Indicative area for new Rapid Access Taxiway(s), Connector Taxiways and changes to aircraft stands
- Indicative footprint of potential acoustic barrier
- Noise preferential routes
- 20 nautical miles x 40 nautical miles area
- Borough boundaries

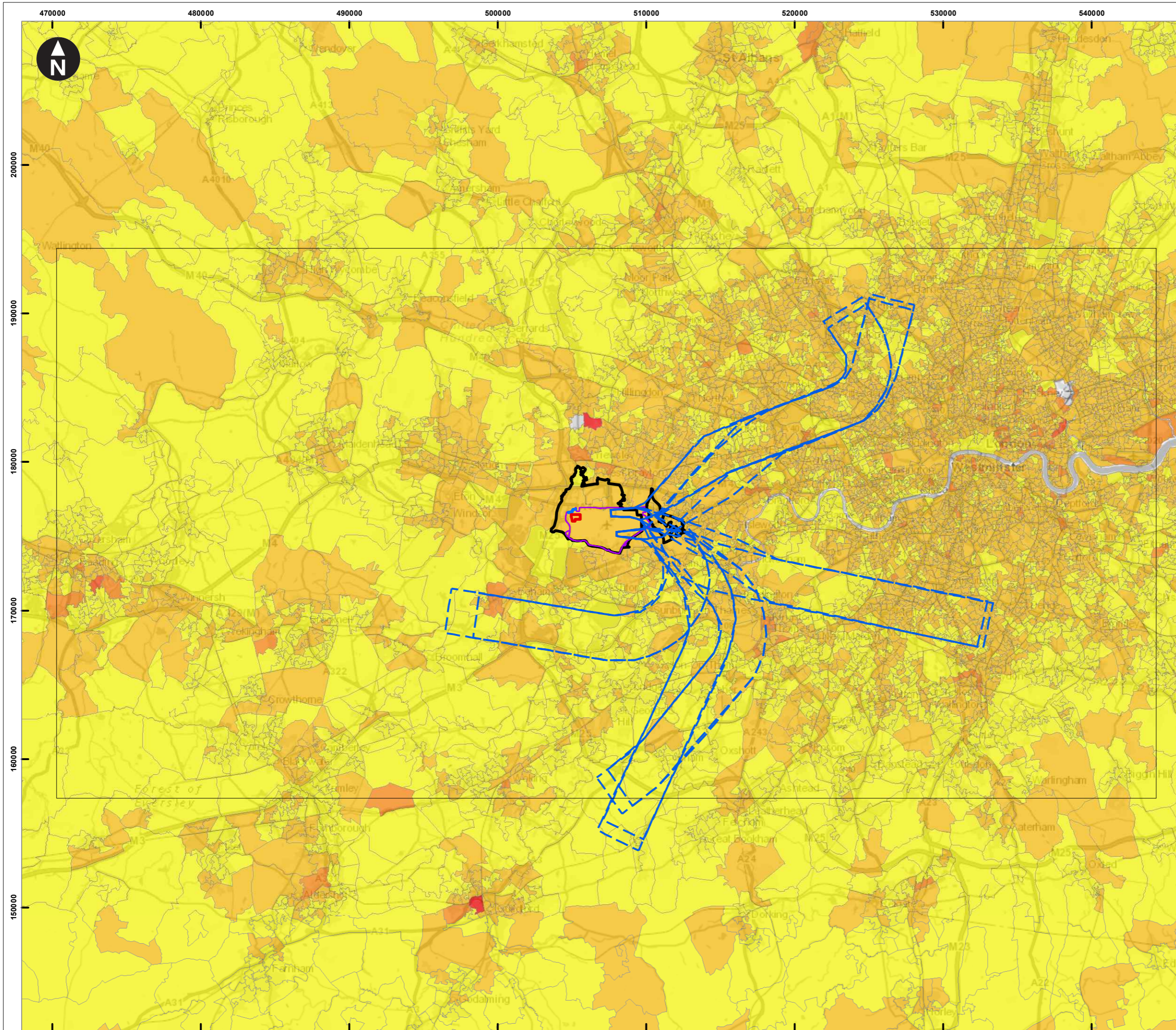


Heathrow Easterly Alteration Infrastructure Project
 Scoping Report

Figure 8.1
Boroughs



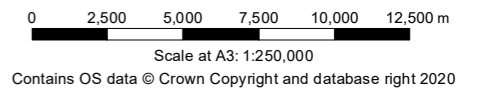
October 2023



- Key
- Heathrow boundary
 - Indicative area for new Rapid Access Taxiway(s), Connector Taxiways and changes to aircraft stands
 - Indicative footprint of potential acoustic barrier
 - Noise preferential routes
 - 20 nautical miles x 40 nautical miles area
 - Middle Layer Super Output Areas

Population aged 16 to 59

- 350 - 1000
- 1001 - 2000
- 2001 - 3000
- 3001 - 4000
- 4001 - 5000

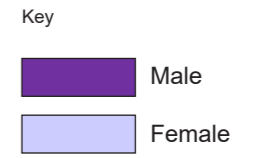


Heathrow Easterly Alteration Infrastructure Project
Scoping Report

Figure 8.2
Number of people in main working age group (16-59)



October 2023



Heathrow Easterly Alteration Infrastructure Project Scoping Report

Figure 8.3
Age distribution: percentage of population by 5-year age groups (2021). Source: ONS (2023) 2021 Census



October 2023