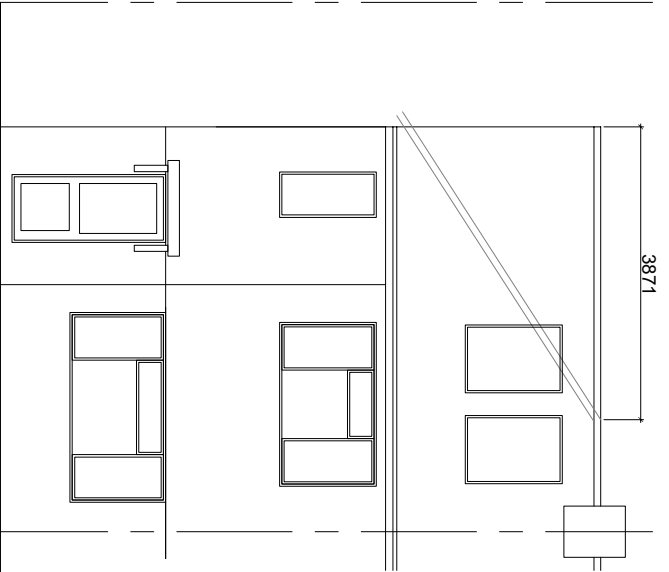


HIP TO GABLE VOLUME

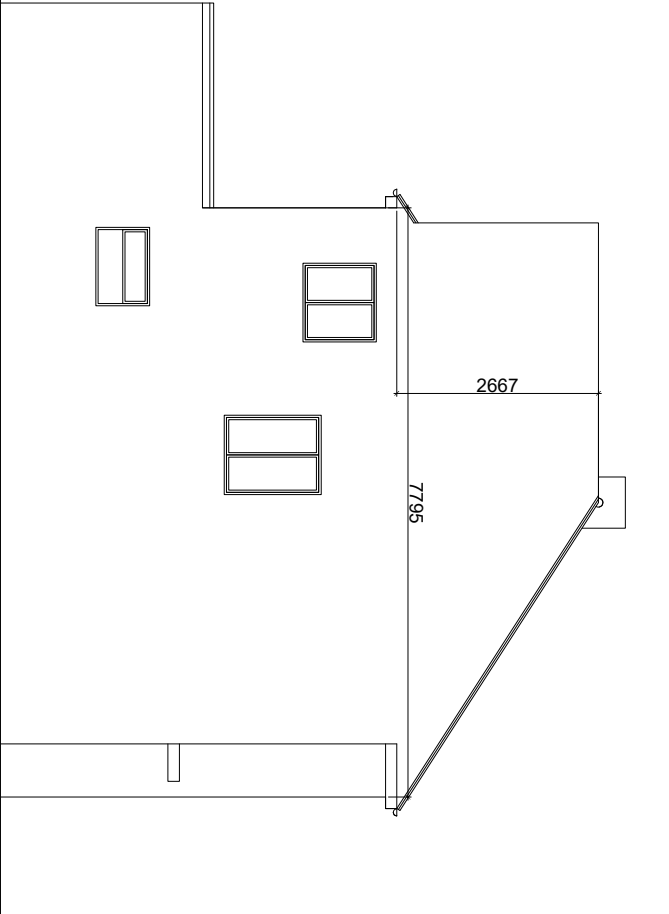
$$\left[(2.667 \times 3.871 \times 7.795) \frac{1}{3} \right] \times \frac{1}{2} = 13.414 \text{ M3}$$

face materials to match extg
roof lights not to protrude more
than 99m from roofline

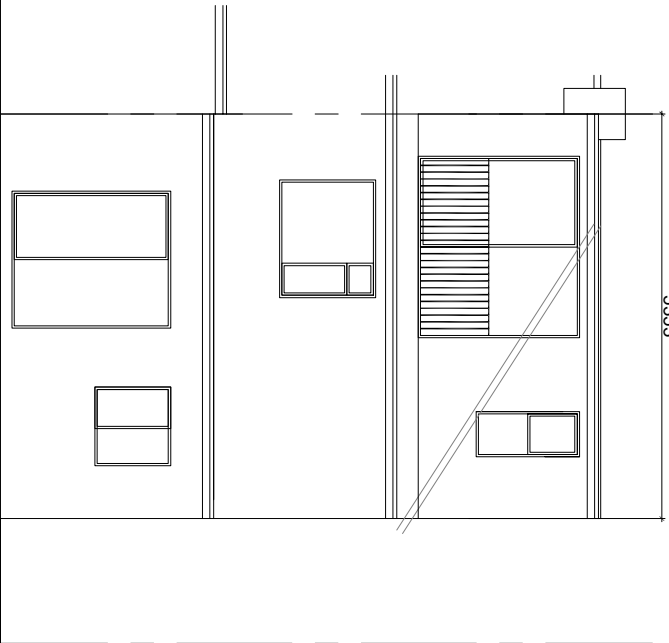
DORMER=
AREA 4.404
LENGTH 5.353
VOLUME = 23.575 M3



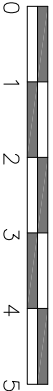
FRONT ELEVATION



SIDE ELEVATION



REAR ELEVATION



Drawings and calculations are to be approved by Building Control prior to the commencement of any work. No responsibility will be taken by the design team without the written approval by the Local Authority or an approved Inspector.

