

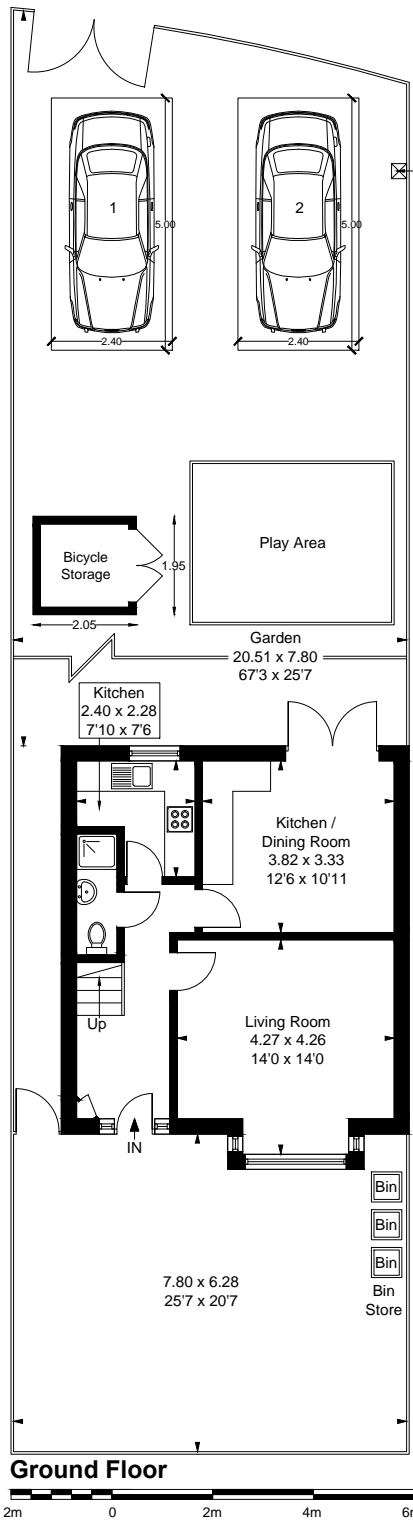
61 Botwell Lane, Hayes, UB3 2AD

Approximate Gross Internal Area = 122.3 sq m / 1317 sq ft

Ground Floor = 46.7 sq m / 503 sq ft

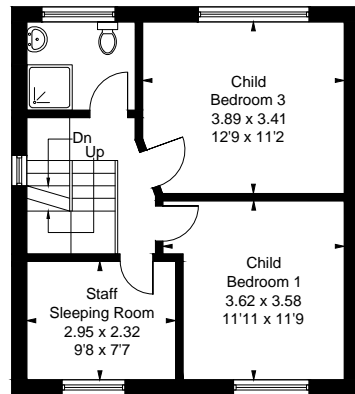
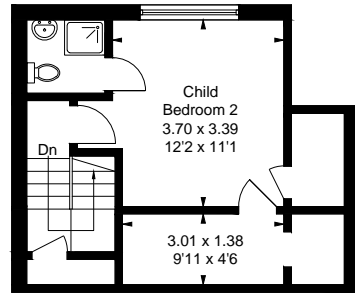
First Floor = 44.7 sq m / 481 sq ft

Second Floor = 30.9 sq m / 333 sq ft



Electric Car Charging Point

Rear 2 No. Car Parking Spaces



1 : 150		PROJECT	CLIENT			
		61 Botwell Lane, Hayes, UB3 2AD	Lifepaths Care Ltd			
Code	Status	SHEET	Date	Project Number	Scale (@ A4)	REV
	Proposed		01/03/26		1 : 150	
SUITABILITY DESCRIPTION	PURPOSE OF ISSUE	Proposed Floor Plan	Drawn by	DRAWING NUMBER		
Planning Permission	Planning		VIZION	116		
			Checked by			
			VIZION			