

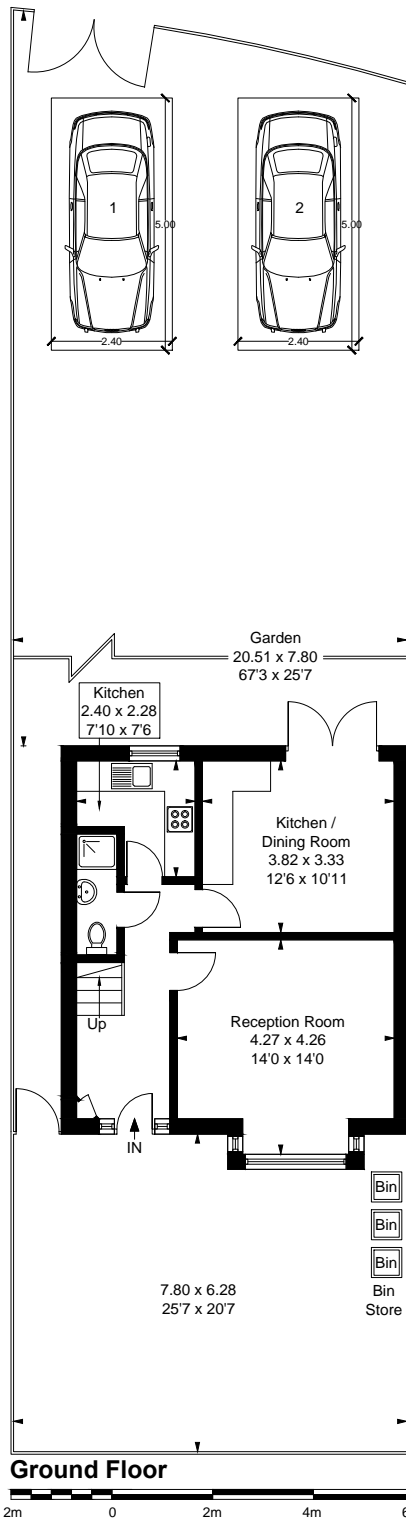
61 Botwell Lane, Hayes, UB3 2AD

Approximate Gross Internal Area = 122.3 sq m / 1317 sq ft

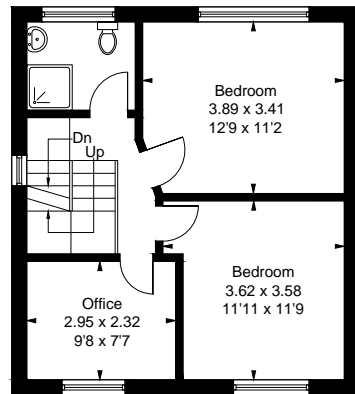
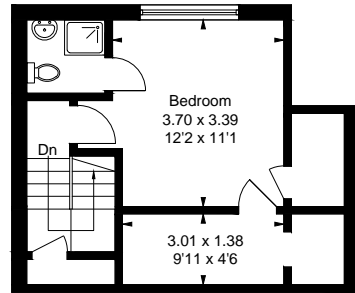
Ground Floor = 46.7 sq m / 503 sq ft

First Floor = 44.7 sq m / 481 sq ft

Second Floor = 30.9 sq m / 333 sq ft



Rear 2 No.
Car Parking
Spaces



1 : 150		PROJECT	CLIENT				
		61 Botwell Lane, Hayes, UB3 2AD	Lifepaths Care Ltd				
Code	Status	SHEET	Date	Project Number	Scale (@ A4)	REV	
	Existing		01/03/26		1 : 150		
SUITABILITY DESCRIPTION	PURPOSE OF ISSUE		Drawn by	DRAWING NUMBER			
Planning Permission	Planning	Existing Floor Plan	VIZION	116			
			Checked by				
			VIZION				