

GENERAL NOTES

1. THIS DRAWING IS NOT AN INSTALLATION DRAWING.
2. SCALED DIMENSIONS SHALL NOT BE TAKEN FROM THIS DRAWING.
3. THIS DRAWING SHALL BE READ IN CONJUNCTION WITH ALL RELEVANT REPORTS, SPECIFICATIONS, ARCHITECTURAL AND ENGINEERING DRAWINGS.
4. THIS DRAWING SHALL BE PRINTED AND READ IN COLOUR ONLY.

LEGEND

- INTAKE AIR DUCTWORK
- DISCHARGE AIR DUCTWORK
- SUPPLY AIR DUCTWORK
- RETURN AIR DUCTWORK
- SUPPLY DIFFUSER WITH PLENUM BOX
- SUPPLY VALVE
- EXTRACT GRILLE WITH PLENUM BOX
- EXTRACT VALVE
- FLEXIBLE DUCTWORK
- ATTENUATOR
- VOLUME CONTROL DAMPER
- COMBINATION FIRE & SMOKE DAMPER
- HEAT RECOVERY UNIT
- EXTRACT FAN

P10	MAY '24	UPDATED FOLLOWING CO-ORDINATION WITH ARCHITECTS	TC	-
P09	APR '24	UPDATED TO INCORPORATE ARCHITECT COMMENTS (RECEIVED 11/04/2024)	TC	AA
P08	APR '24	FINAL STAGE 4 ISSUE	TC	AA
P07	MAY '24	PRELIMINARY TENDER ISSUE	LD	RM
P06	JAN '24	UPDATED TO INCORPORATE ARCHITECT COMMENTS	TC	-
P05	DEC '23	UPDATED FOR LAYOUT CHANGE	TC	AA
P04	MAY '22	FOR TENDER	BP	JP
P03	APR '22	FOR PLANNING AMENDMENTS	BP	JP
P02	DEC '21	SUITABLE FOR STAGE APPROVAL	BP	JP
P01	OCT '21	CHANGES TO TITLE BLOCK REVISIONS	ZD	MR
T02	SEP '21	TENDER ISSUE	JC	JP
T01	SEP '21	TENDER ISSUE	JC	BP
R01	DATE	DESCRIPTION	BP	VE

couchperrywilkes
engineering change

Birmingham	I +44(0) 121 708 6603	
Birmingham	I +44(0) 115 924 3343	
Huddersfield	I +44(0) 148 343 7483	
Leeds	I +44(0) 113 247 0709	
Bristol	I +44(0) 117 331 5011	
Leicester	I +44(0) 115 225 7397	
London	I +44(0) 203 878 4709	
Manchester	I +44(0) 161 574 7535	

RIBA STAGE
STAGE 4

STATUS
SUITABLE FOR STAGE APPROVAL

CLIENT
THE HILLINGDON HOSPITALS NHS - FOUNDATION TRUST

PROJECT
HILLINGDON HOSPITAL - THE FURZE

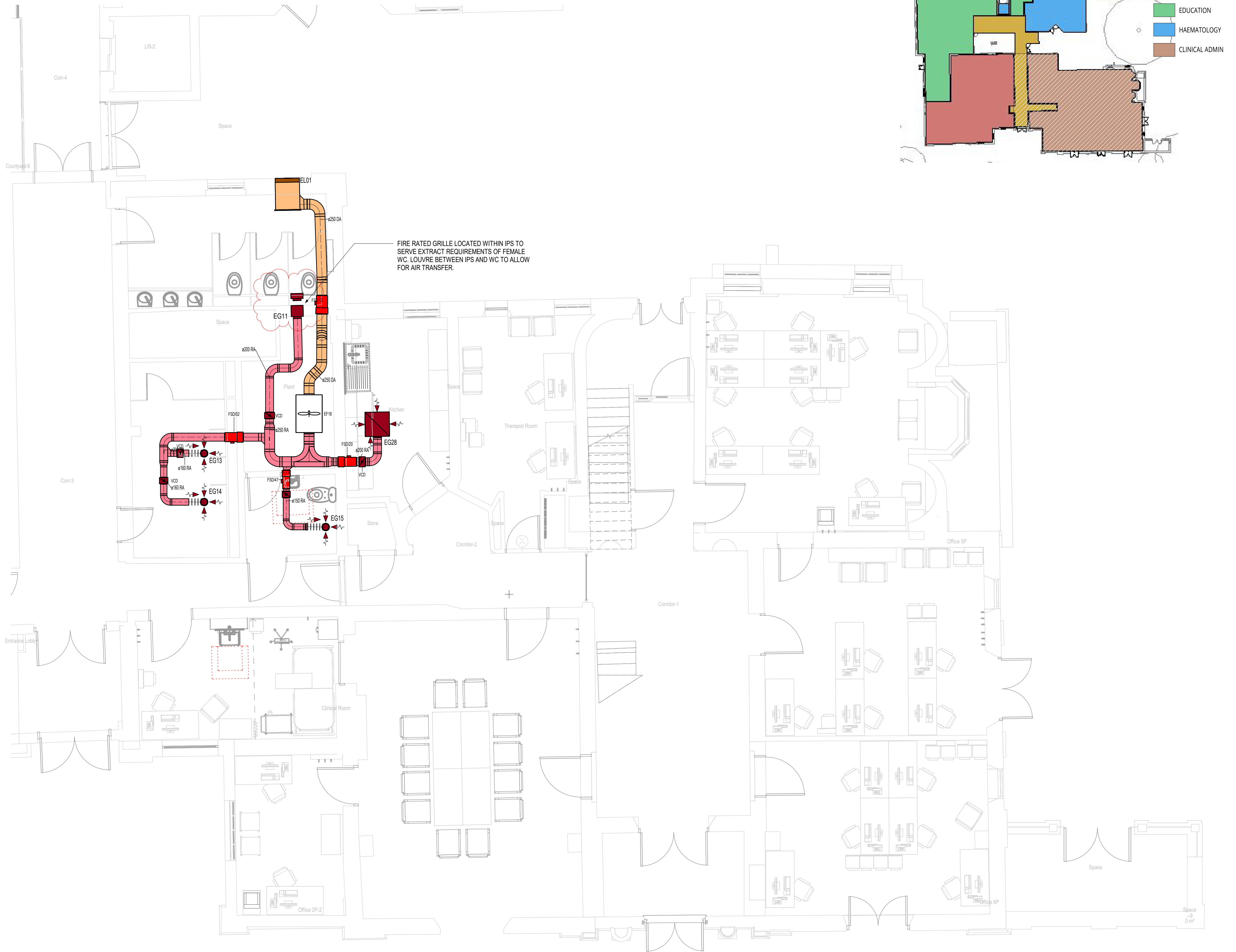
DRAWING TITLE
MECHANICAL SERVICES
GROUND FLOOR - CLINICAL ADMIN
VENTILATION LAYOUT

SCALE (A1) DATE BY VE
1:50 SEP '21 BP JP

PROJ	OWNER	NO.	REV.	DATE	NO.	NO.	NO.	NO.	NO.
THHFP1	CPW	ZZ	00	DR	M	11001	S4	P10	

THHFP1-CPW-ZZ-00-DR-M-11001_S4_P10
CPW Project No. 240208

LINKED FILES
-HTF-LDW-XX-ZZ-M3-A-0001
THHFP1-CRH-ZZ-ZZ-M3-S-0001



DEPARTMENT LEGEND

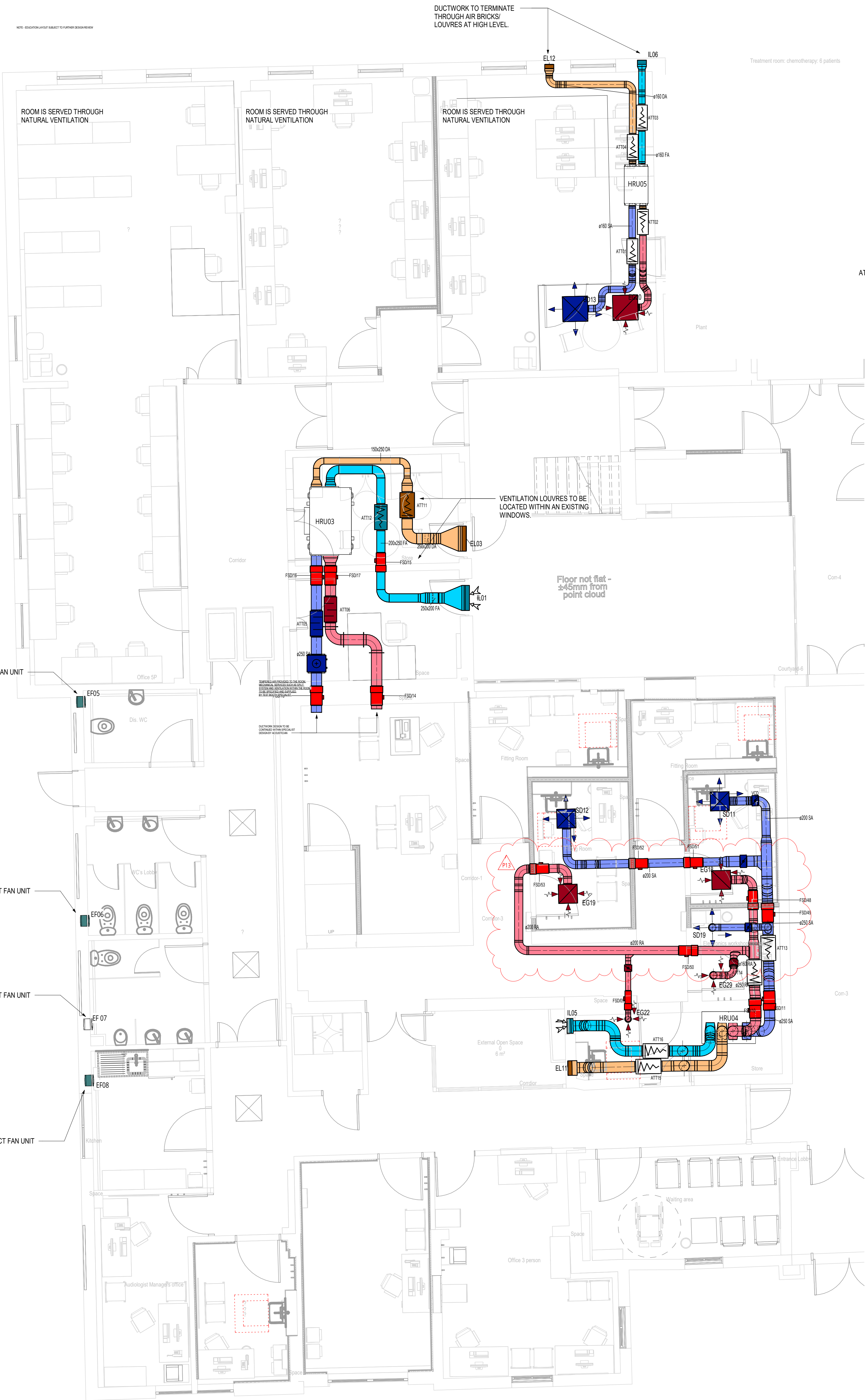
- AUDIOLOGY
- CIRCULATION
- EDUCATION
- HAEMATOLOGY
- CLINICAL ADMIN

GENERAL NOTES

- THIS DRAWING IS NOT AN INSTALLATION DRAWING.
- SCALED DIMENSIONS SHALL NOT BE TAKEN FROM THIS DRAWING.
- THIS DRAWING SHALL BE READ IN CONJUNCTION WITH ALL RELEVANT REPORTS, SPECIFICATIONS, ARCHITECTURAL AND ENGINEERING DRAWINGS.
- THIS DRAWING SHALL BE PRINTED AND READ IN COLOUR ONLY.

LEGEND

- INTAKE AIR DUCTWORK
- DISCHARGE AIR DUCTWORK
- SUPPLY AIR DUCTWORK
- RETURN AIR DUCTWORK
- SUPPLY DIFFUSER WITH PLENUM BOX
- SUPPLY VALVE
- EXTRACT GRILLE WITH PLENUM BOX
- EXTRACT VALVE
- FLEXIBLE DUCTWORK
- ATTENUATOR
- VOLUME CONTROL DAMPER
- COMBINATION FIRE & SMOKE DAMPER
- HEAT RECOVERY UNIT
- EXTRACT FAN



P13	JUN 24	FIRE DAMPERS ADDED TO AUDIOLOGY	TC	AA
P12	JUN 24	UPDATED FOLLOWING BWC CO-ORDINATION WITH ARCHITECTS	RK	RNL
P11	MAY 24	UPDATED FOLLOWING CO-ORDINATION WITH ARCHITECTS	TC	-
P10	APR 24	UPDATED TO INCORPORATE ARCHITECT COMMENTS (RECEIVED 11/04/2024)	TC	AA
P09	APR 24	FINAL STAGE 4 ISSUE	TC	AA
P08	MAR 24	PRELIMINARY TENDER ISSUE	TC	AA
P07	JAN 24	UPDATED TO INCORPORATE ARCHITECT COMMENTS	TC	AA
P06	DEC 23	UPDATED FOR LAYOUT CHANGE	TC	AA
P05	MAY 22	DESIGN TEAM COMMENTS INCORPORATED	BP	JP
P04	MAY 22	FOR TENDER	BP	JP
P03	APR 22	FOR PLANNING AMENDMENTS	BP	JP
P02	DEC 21	SUITABLE FOR STAGE APPROVAL	BP	JP
P01	OCT 21	CHANGES TO TITLE BLOCK REVISIONS	ZD	MR
T02	SEPT 21	TENDER ISSUE	JC	BP
T01	SEP 21	TENDER ISSUE	JC	BP
REV	DATE	DESCRIPTION	BY	VE

couchperrywilkes[®]
engineering change

Birmingham	+44(0) 121 709 6600	X
Nottingham	+44(0) 115 924 3348	
Huddersfield	+44(0) 148 945 7468	
Leeds	+44(0) 115 347 0769	
Bristol	+44(0) 117 315 5201	
London	+44(0) 184 253 2917	
London	+44(0) 203 874 4264	
Manchester	+44(0) 161 974 7306	

RIBA STAGE

STATUS

CLIENT
THE HILLINGDON HOSPITALS NHS - FOUNDATION TRUST

PROJECT
HILLINGDON HOSPITAL - THE FURZE

DRAWING TITLE
MECHANICAL SERVICES
GROUND FLOOR - EDUCATION & AUDIOLOGY
VENTILATION LAYOUT

SCALE (A1)	DATE	BY	VE
1:50	SEP' 21	BP	JP

Fig ID	Original	Volume	Level	Type	Role	Number	Subsity	Revision
THHFP1	CPW	ZZ	00	DR	M	11002	S4	P13

THHFP1-CPW-ZZ-00-DR-M-11002_S4_P13
CPW Project No: 24029

LINKED FILES
-HTF-LDW-XX-ZZ-M3-A-0001
THHFP1-CRH-ZZ-ZZ-M3-S-0001

DEPARTMENT LEGEND

- AUDIOLOGY
- CIRCULATION
- EDUCATION
- HAEMATOLOGY
- CLINICAL ADMIN

GENERAL NOTES

- THIS DRAWING IS NOT AN INSTALLATION DRAWING.
- SCALED DIMENSIONS SHALL NOT BE TAKEN FROM THIS DRAWING.
- THIS DRAWING SHALL BE READ IN CONJUNCTION WITH ALL RELEVANT REPORTS, SPECIFICATIONS, ARCHITECTURAL AND ENGINEERING DRAWINGS.
- THIS DRAWING SHALL BE PRINTED AND READ IN COLOUR ONLY.

LEGEND

- INTAKE AIR DUCTWORK
- DISCHARGE AIR DUCTWORK
- SUPPLY AIR DUCTWORK
- RETURN AIR DUCTWORK
- SUPPLY DIFFUSER WITH PLENUM BOX
- SUPPLY VALVE
- EXTRACT GRILLE WITH PLENUM BOX
- EXTRACT VALVE
- FLEXIBLE DUCTWORK
- ATTENUATOR
- VOLUME CONTROL DAMPER
- COMBINATION FIRE & SMOKE DAMPER
- HEAT RECOVERY UNIT
- EXTRACT FAN

POB	MAY 24	UPDATED FOLLOWING CO-ORDINATION WITH ARCHITECTS	TC	-
P08	APR 24	UPDATED TO INCORPORATE ARCHITECT COMMENTS (RECEIVED 11/04/2024)	TC	AA
P07	APR 24	FINAL STAGE ISSUE	TC	AA
P06	MAR 24	PRELIMINARY TENDER ISSUE	TC	AA
P05	JAN 24	UPDATED TO INCORPORATE ARCHITECT COMMENTS	TC	-
P04	MAY 22	FOR TENDER	BP	JP
P03	APR 22	FOR PLANNING AMENDMENTS	BP	JP
P02	DEC 21	SUITABLE FOR STAGE APPROVAL	BP	JP
P01	OCT 21	CHANGED TO TITLE BLOCK REVISIONS	ZD	MB
T02	SEPT 21	TENDER ISSUE	JC	JP
T01	SEP 21	TENDER ISSUE	JC	BP
REV	DATE	DESCRIPTION	BP	VE

couchperrywilkes
engineering change

Birmingham | +44(0) 121 708 6603
Nottingham | +44(0) 115 524 3348
Huddersfield | +44(0) 148 345 7483
Leeds | +44(0) 113 245 0709
Bristol | +44(0) 117 235 5201
Leicester | +44(0) 115 225 7397
London | +44(0) 203 878 4709
Manchester | +44(0) 161 574 7535

RIBA STAGE

STAGE 4

STATUS

SUITABLE FOR STAGE APPROVAL

CLIENT
THE HILLINGDON HOSPITALS NHS - FOUNDATION TRUST

PROJECT
HILLINGDON HOSPITAL - THE FURZE

DRAWING TITLE
MECHANICAL SERVICES
GROUND FLOOR - HAEMATOLOGY
VENTILATION LAYOUT

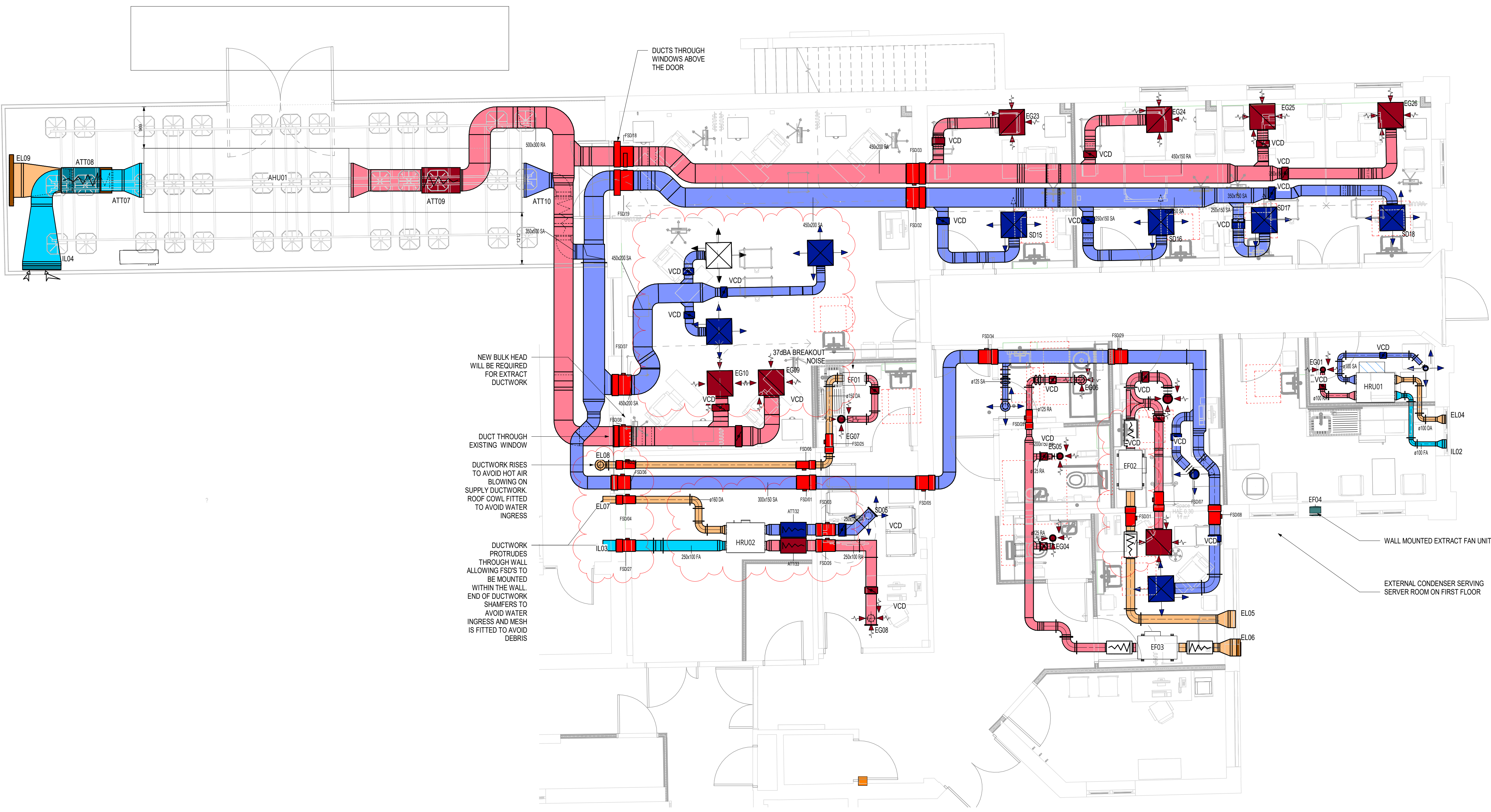
SCALE (A1) DATE BY VE
1:50 SEP' 21 BP JP

Proj ID	Originator	Volume	Level	Type	Role	Number	Suitability	Revision
THHFP1	CPW	22	00	DR	M	11003	S4	P09

THHFP1-CPW-ZZ-00-DR-M-11003_S4_P09

CPW Project No. 240208

LINKED FILES
-HTF-LDW-XX-ZZ-M3-A-0001
THHFP1-CRH-ZZ-ZZ-M3-S-0001



NEW BULK HEAD
WILL BE REQUIRED
FOR EXTRACT
DUCTWORK

DUCT THROUGH
EXISTING WINDOW

DUCTWORK RISES
TO AVOID HOT AIR
BLOWING ON
SUPPLY DUCTWORK.
ROOF COWL FITTED
TO AVOID WATER
INGRESS

DUCTWORK
PROTRUDES
THROUGH WALL
ALLOWING FSD'S TO
BE MOUNTED
WITHIN THE WALL.
END OF DUCTWORK
SHAMFERS TO
AVOID WATER
INGRESS AND MESH
IS FITTED TO AVOID
DEBRIS

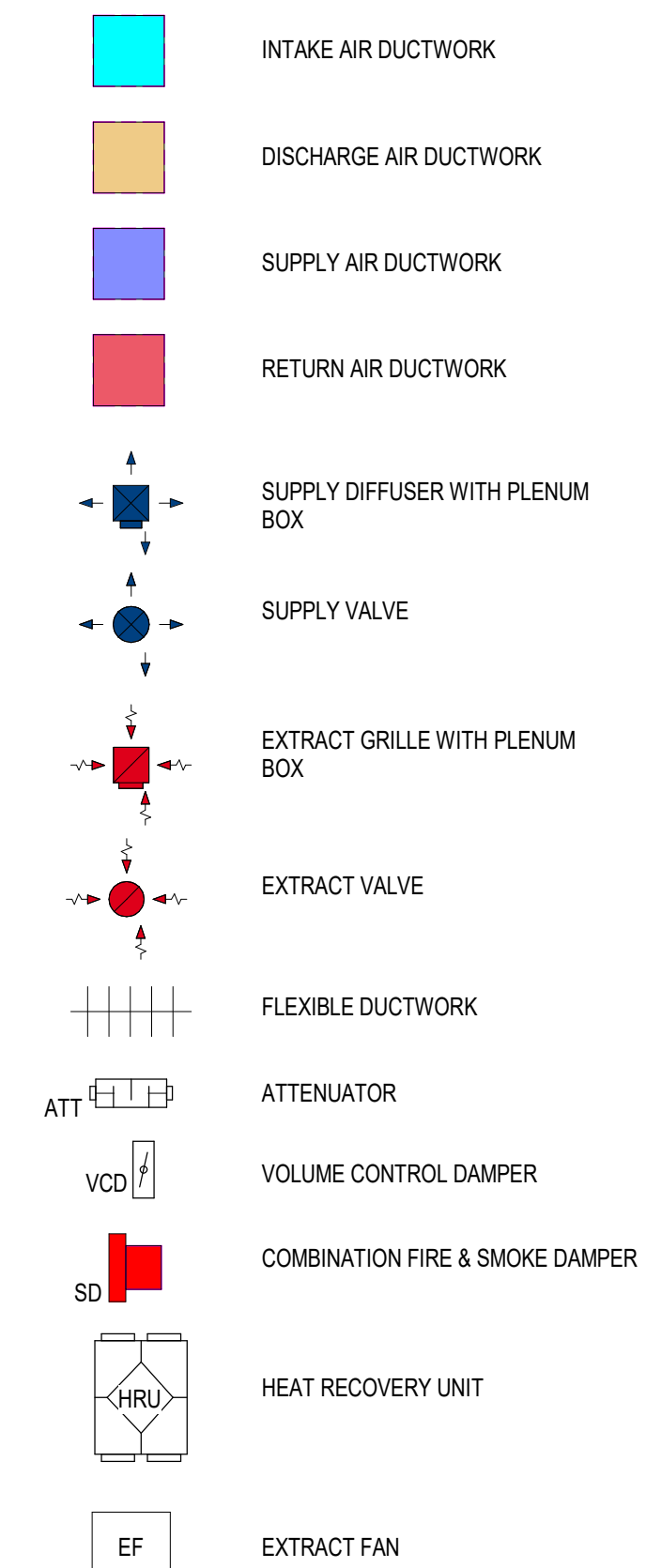
WALL MOUNTED EXTRACT FAN UNIT

EXTERNAL CONDENSER SERVING
SERVER ROOM ON FIRST FLOOR

GENERAL NOTES

1. THIS DRAWING IS NOT AN INSTALLATION DRAWING.
2. SCALED DIMENSIONS SHALL NOT BE TAKEN FROM THIS DRAWING.
3. THIS DRAWING SHALL BE READ IN CONJUNCTION WITH ALL RELEVANT REPORTS, SPECIFICATIONS, ARCHITECTURAL AND ENGINEERING DRAWINGS.
4. THIS DRAWING SHALL BE PRINTED AND READ IN COLOUR ONLY.

LEGEND



P11	MAY '24	UPDATED FOLLOWING CO-ORDINATION WITH ARCHITECTS	TC	AA
P12	APR '24	UPDATE INCORPORATE ARCHITECT COMMENTS (RECEIVED 11/04/2024)	TC	AA
P13	APR '24	FINAL STAGE 4 ISSUE	TC	AA
P18	MAR '24	PRELIMINARY TENDER ISSUE	TC	AA
P17	MAR '24	PRELIMINARY TENDER ISSUE	TC	AA
P16	JAN '24	UPDATE TO INCORPORATE ARCHITECT COMMENTS	TC	AA
P05	DEC23	UPDATED FOR LAYOUT CHANGE	TC	AA
P04	MAY23	FOR TENDER	BP	JP
P03	APR23	FOR PLANNING APPLICATIONS	BP	JP
P02	DEC21	SUITABLE FOR STAGE APPROVAL	BP	JP
P11	OCT '21	CHANGES TO TITLE BLOCK REVISIONS	BP	JP
T01	SEP '21	TENDER ISSUE	BP	JP
REV	DATE	DESCRIPTION	BY	VE

couchperrywilkes®
engineering change

Birmingham I +44(0) 121 706 6600 
Nottingham I +44(0) 115 924 3340 
Huntingdon I +44(0) 148 945 7480 
Leeds I +44(0) 113 247 0709 
Bristol I +44(0) 117 351 5051 
Leicester I +44(0) 116 255 7387 
London I +44(0) 203 373 4790 
Manchester I +44(0) 161 974 7535 

RIBA STAGE

STAGE 4

STATUS

SUITABLE FOR STAGE APPROVAL

CLIENT
THE HILLINGDON HOSPITALS NHS - FOUNDATION TRUST

PROJECT
HILLINGDON HOSPITAL - THE FURZE

DRAWING TITLE
MECHANICAL SERVICES
FIRST FLOOR - CLINICAL ADMIN
VENTILATION LAYOUT

SCALE (A1)	DATE	BY	VE
1:50	SEP' 21	BP	JP

THHFP1-CPW-ZZ-01-DR-M-11001 S4 P11

LINKED FILES
-HTF-LDW-XX-ZZ-M3-A-0001
THHFP1-CRH-ZZ-ZZ-M3-S-0001

DEPARTMENT LEGEND

- AUDIOLOGY
- CIRCULATION
- EDUCATION
- HAEMATOLOGY
- CLINICAL ADMIN

GENERAL NOTES

- THIS DRAWING IS NOT AN INSTALLATION DRAWING.
- SCALED DIMENSIONS SHALL NOT BE TAKEN FROM THIS DRAWING.
- THIS DRAWING SHALL BE READ IN CONJUNCTION WITH ALL RELEVANT REPORTS, SPECIFICATIONS, ARCHITECTURAL AND ENGINEERING DRAWINGS.
- THIS DRAWING SHALL BE PRINTED AND READ IN COLOUR ONLY.

LEGEND

- INTAKE AIR DUCTWORK
- DISCHARGE AIR DUCTWORK
- SUPPLY AIR DUCTWORK
- RETURN AIR DUCTWORK
- SUPPLY DIFFUSER WITH PLENUM BOX
- SUPPLY VALVE
- EXTRACT GRILLE WITH PLENUM BOX
- EXTRACT VALVE
- FLEXIBLE DUCTWORK
- ATTENUATOR
- VOLUME CONTROL DAMPER
- COMBINATION FIRE & SMOKE DAMPER
- HEAT RECOVERY UNIT
- EXTRACT FAN

P11	MAY '24	UPDATED FOLLOWING CO-ORDINATION WITH ARCHITECTS	TC	-
P10	APR '24	UPDATED TO INCORPORATE ARCHITECT COMMENTS (RECEIVED 11/04/2024)	TC	AA
P09	APR '24	FINAL STAGE 4 ISSUE	TC	AA
P08	MAY '24	PRELIMINARY TENDER ISSUE	TC	AA
P07	MAR '24	PRELIMINARY TENDER ISSUE	TC	AA
P06	JAN '24	UPDATED TO INCORPORATE ARCHITECT COMMENTS	TC	
P05	DEC '23	UPDATED FOR LAYOUT CHANGE	TC	AA
P04	MAY '22	FOR TENDER	BP	JP
P03	APR '22	FOR PLANNING AMENDMENTS	BP	JP
P02	DEC '21	SUITABLE FOR STAGE APPROVAL	BP	JP
P01	OCT '21	CHANGES TO TITLE BLOCK REVISIONS	ZO	NR
T01	SEP '21	TENDER ISSUE	JC	BP
R01			BP	VE

couchperrywilkes®
engineering change

Birmingham

+44(0) 121 709 6603

■

Nottingham

+44(0) 115 524 3343

■

Huddersfield

+44(0) 148 343 7483

■

Leeds

+44(0) 113 247 0709

■

Bristol

+44(0) 117 335 5001

■

Leicester

+44(0) 115 255 7397

■

London

+44(0) 203 878 4709

■

Manchester

+44(0) 161 574 7535

■

RIBA STAGE

STAGE 4

STATUS

SUITABLE FOR STAGE APPROVAL

CLIENT

THE HILLINGDON HOSPITALS NHS - FOUNDATION TRUST

PROJECT

HILLINGDON HOSPITAL - THE FURZE

DRAWING TITLE

MECHANICAL SERVICES
FIRST FLOOR - CLINICAL ADMIN
VENTILATION LAYOUT

SCALE (A1)

1:50

DATE

SEP '21

BY

BP

VE

JP

REV	DATE	DESCRIPTION	BY	CHKD	DATE	STATUS
THHFP1	CPW	ZZ	01	DR	M	11002_S4

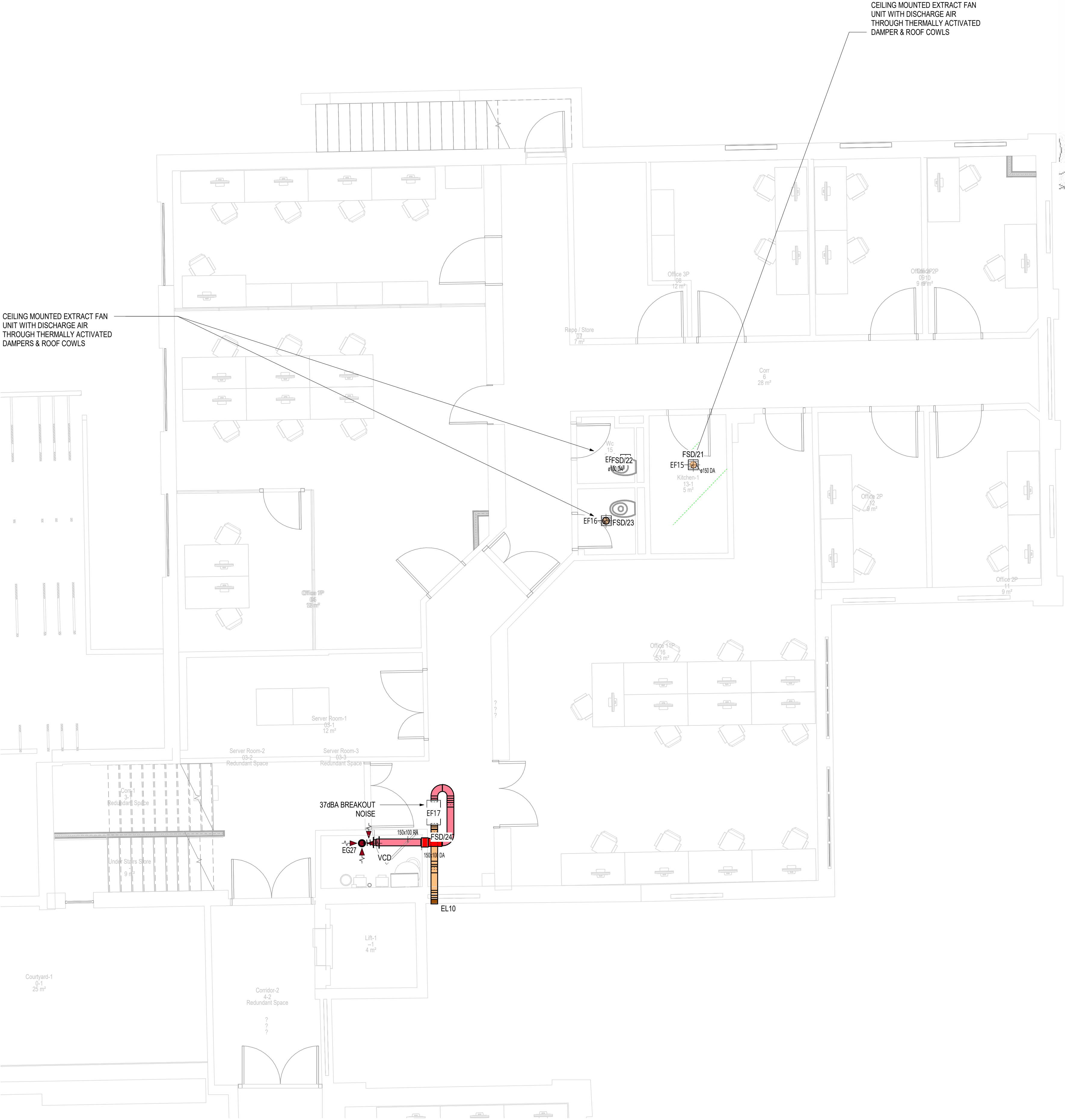
THHFP1-CPW-ZZ-01-DR-M-11002_S4_P11

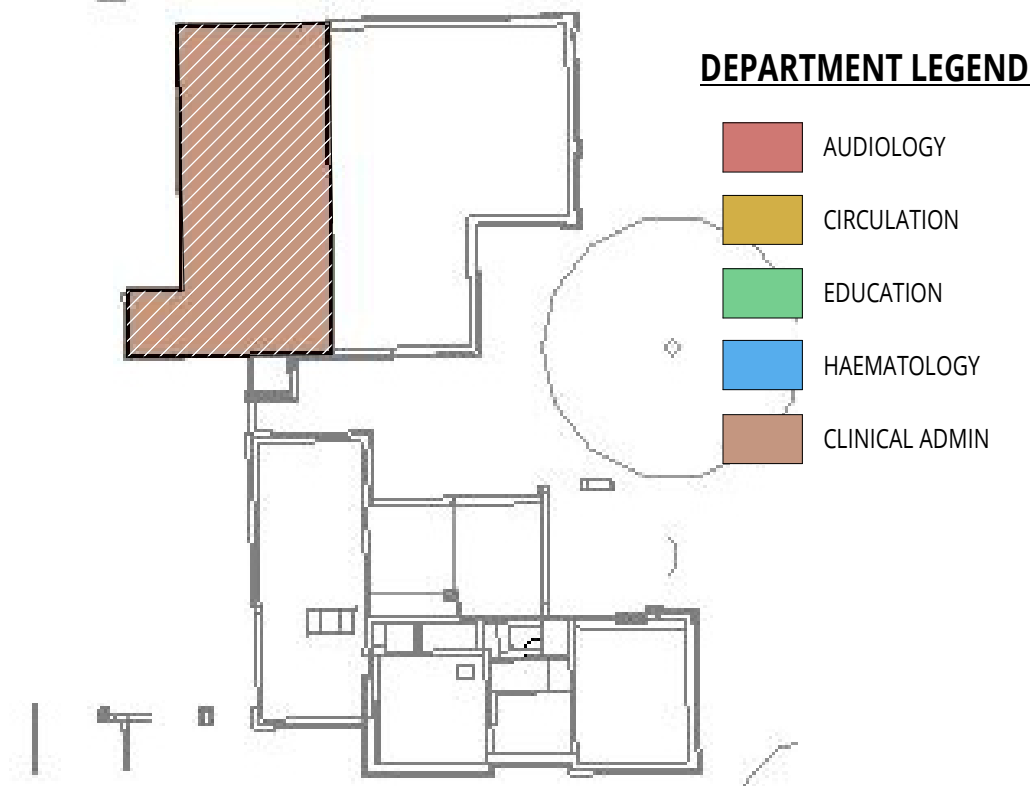
CPW Project No. 240208

LINKED FILES

-HTF-LDW-XX-ZZ-M3-A-0001

THHFP1-CRH-ZZ-ZZ-M3-S-0001

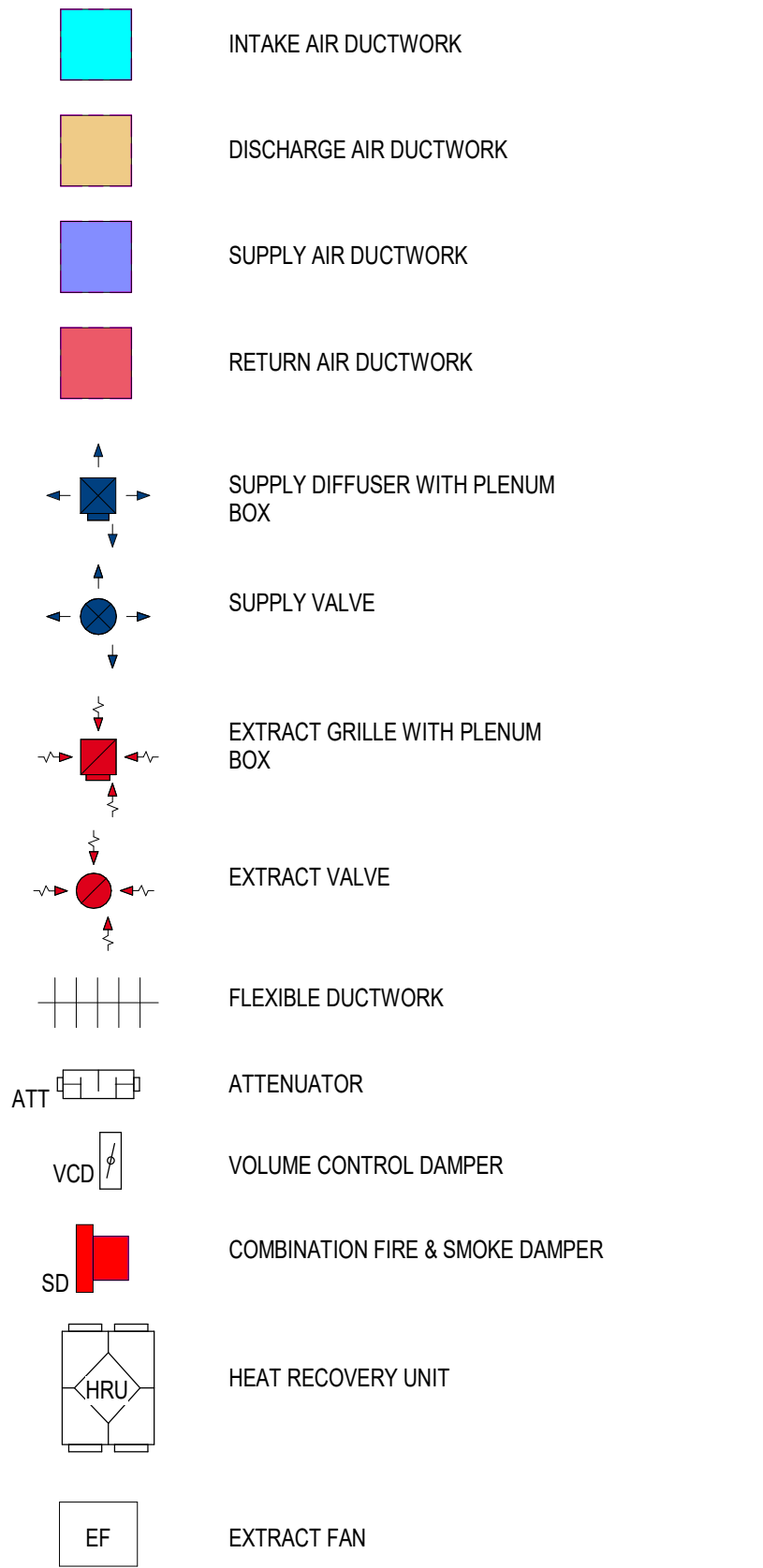




GENERAL NOTES

- THIS DRAWING IS NOT AN INSTALLATION DRAWING.
- SCALED DIMENSIONS SHALL NOT BE TAKEN FROM THIS DRAWING.
- THIS DRAWING SHALL BE READ IN CONJUNCTION WITH ALL RELEVANT REPORTS, SPECIFICATIONS, ARCHITECTURAL AND ENGINEERING DRAWINGS.
- THIS DRAWING SHALL BE PRINTED AND READ IN COLOUR ONLY.

LEGEND



P11	MAY '24	UPDATED FOLLOWING CO-ORDINATION WITH ARCHITECTS	TC	-
P10	APR '24	UPDATED TO INCORPORATE ARCHITECT COMMENTS (RECEIVED 11042024)	TC	AA
P09	APR '24	FINAL STAGE 4 ISSUE	TC	AA
P08	MAY '24	PRELIMINARY TENDER ISSUE	TC	AA
P07	MAR '24	PRELIMINARY TENDER ISSUE	TC	AA
P06	JAN '24	UPDATED TO INCORPORATE ARCHITECT COMMENTS	TC	
P05	DEC'23	UPDATED FOR LAYOUT CHANGE	TC	AA
P04	MAY'22	FOR TENDER	BP	JP
P03	APR'22	FOR PLANNING AMENDMENTS	BP	JP
P02	DEC'21	SUITABLE FOR STAGE APPROVAL	BP	JP
P01	OCT '21	CHANGES TO TITLE BLOCK REVISIONS	ZO	NR
T01	SEP '21	TENDER ISSUE	JC	BP
R01	DATE	DESCRIPTION	BP	VE

couchperrywilkes®
engineering change

Birmingham	I +44(0) 121 708 6603	<input checked="" type="checkbox"/>
Nottingham	I +44(0) 115 924 3343	<input type="checkbox"/>
Huddersfield	I +44(0) 148 343 7483	<input type="checkbox"/>
Leeds	I +44(0) 113 241 0709	<input type="checkbox"/>
Bristol	I +44(0) 117 331 5001	<input type="checkbox"/>
Leicester	I +44(0) 115 255 7397	<input type="checkbox"/>
London	I +44(0) 203 878 4709	<input type="checkbox"/>
Manchester	I +44(0) 161 574 7535	<input type="checkbox"/>

RIBA STAGE

STAGE 4

STATUS

SUITABLE FOR STAGE APPROVAL

CLIENT

THE HILLINGDON HOSPITALS NHS - FOUNDATION TRUST

PROJECT

HILLINGDON HOSPITAL - THE FURZE

DRAWING TITLE

**MECHANICAL SERVICES
SECOND FLOOR - CLINICAL ADMIN
VENTILATION LAYOUT**

SCALE (A1) DATE BY VE

1:50 SEP' 21 BP JP

Proj ID	Originator	Volume	Level	Type	Role	Number	Suitability	Revision
THHFP1	CPW	ZZ	02	DR	M	11001	S4	P11

THHFP1-CPW-ZZ-02-DR-M-11001_S4_P11

CPW Project No. 240208

LINKED FILES

-HTF-LDW-XX-ZZ-M3-A-0001

THHFP1-CRH-ZZ-ZZ-M3-S-0001

