

#### FIRE ALARM LEGEND

- MAIN FIRE ALARM PANEL
- FIRE ALARM REPEATER PANEL
- SMOKE DAMPER CONTROL PANEL
- FIRE ALARM INTERFACE UNIT
- SMOKE DETECTOR
- HEAT DETECTOR
- SB - DENOTES SOUNDER/BEACON BASES  
M - DENOTES MULTI SENSOR
- VISUAL/AUDIO DEVICE
- MANUAL CALL POINT
- EVACUATION ALERT PANEL

#### NURSE CALL LEGEND

- CEILING MOUNTED INDICATOR LAMP
- STAFF TO STAFF CALL BUTTON
- PATIENT TO STAFF CALL BUTTON
- NURSE CALL PANEL

#### GENERAL NOTES

- THIS DRAWING IS NOT AN INSTALLATION DRAWING.
- SCALED DIMENSIONS SHALL NOT BE TAKEN FROM THIS DRAWING.
- THIS DRAWING SHALL BE READ IN CONJUNCTION WITH ALL RELEVANT REPORTS, SPECIFICATIONS, ARCHITECTURAL AND ENGINEERING DRAWINGS.
- THIS DRAWING SHALL BE PRINTED AND READ IN COLOUR ONLY.

#### ELECTRICAL NOTES

- THE CONTRACTOR SHALL BE DEEMED TO HAVE INCLUDED FOR ALL ITEMS OF EQUIPMENT INCLUDING MANUFACTURER AND TYPE AS DETAILED ON THIS DRAWING AND WITHIN THE SPECIFICATION.
- THE CONTRACTOR SHALL BE RESPONSIBLE FOR THE CORRECT AND FINAL POSITIONING OF ALL OUTLETS TO MEET THE END-USERS REQUIREMENTS THIS SHALL BE CARRIED OUT IN CONJUNCTION WITH THE PROJECT ARCHITECT. FINAL SETTING OUT EQUIPMENT SHALL BE TO THE ARCHITECTS ROOM LAYOUT AND REFLECTED CEILING PLANS.
- THE CONTRACTOR SHALL CO-ORDINATE ALL ELECTRICAL SERVICES WITH MECHANICAL SERVICES AND STRUCTURE.
- THE CONTRACTOR SHALL EMPLOY A REPRESENTATIVE OF THE SYSTEM MANUFACTURER TO TEST AND COMMISSION EACH SYSTEM UPON COMPLETION OF EACH PHASE OF WORKS.

P10	APR 24	UPDATED TO INCORPORATE ARCHITECTS COMMENTS (PREVIOUS 11/04/2024)	LD	RAI
P09	APR 24	FINAL STAGE 4 ISSUE	AT	RAI
P08	MAR 24	PRELIMINARY TENDER ISSUE	LD	RAI
P07	MAR 24	PRELIMINARY TENDER ISSUE	LD	RAI
P06	JAN 20	UPDATED TO INCORPORATE ARCHITECT COMMENTS	RG	RAI
P05	DEC 20	UPDATED FOR LAYOUT CHANGE	LD	RAI
P04	MAY 22	FOR TENDER	JG	NR
P03	APR 22	FOR PLANNING AMENDMENTS	JG	NR
P02	DEC 21	SUITABLE FOR STAGE APPROVAL	BP	JP
P01	OCT 21	CHANGES TO TITLE BLOCK REVISIONS	ZD	NR
T02	SEP 21	TENDER ISSUE	JG	NR
T01	SEP 21	TENDER ISSUE	JG	NR
R01	DATE	DESCRIPTION	BP	VE

**couchperrywilkes**  
engineering change

Birmingham | +44(0) 121 709 6603  
Nottingham | +44(0) 115 524 3348  
Huddersfield | +44(0) 148 345 7483  
Leeds | +44(0) 113 247 0709  
Bristol | +44(0) 117 235 5001  
Leicester | +44(0) 115 225 7397  
London | +44(0) 203 870 4709  
Manchester | +44(0) 161 574 7538

RIBA STAGE

## STAGE 4

STATUS

### SUITABLE FOR STAGE APPROVAL

CLIENT

THE HILLINGDON HOSPITALS NHS - FOUNDATION TRUST

PROJECT

HILLINGDON HOSPITAL - THE FURZE

DRAWING TITLE

ELECTRICAL SERVICES  
GROUND FLOOR - CLINICAL ADMIN  
FIRE ALARM LAYOUT

SCALE (A1) DATE BY VE

1:50 SEP' 21 JG NR

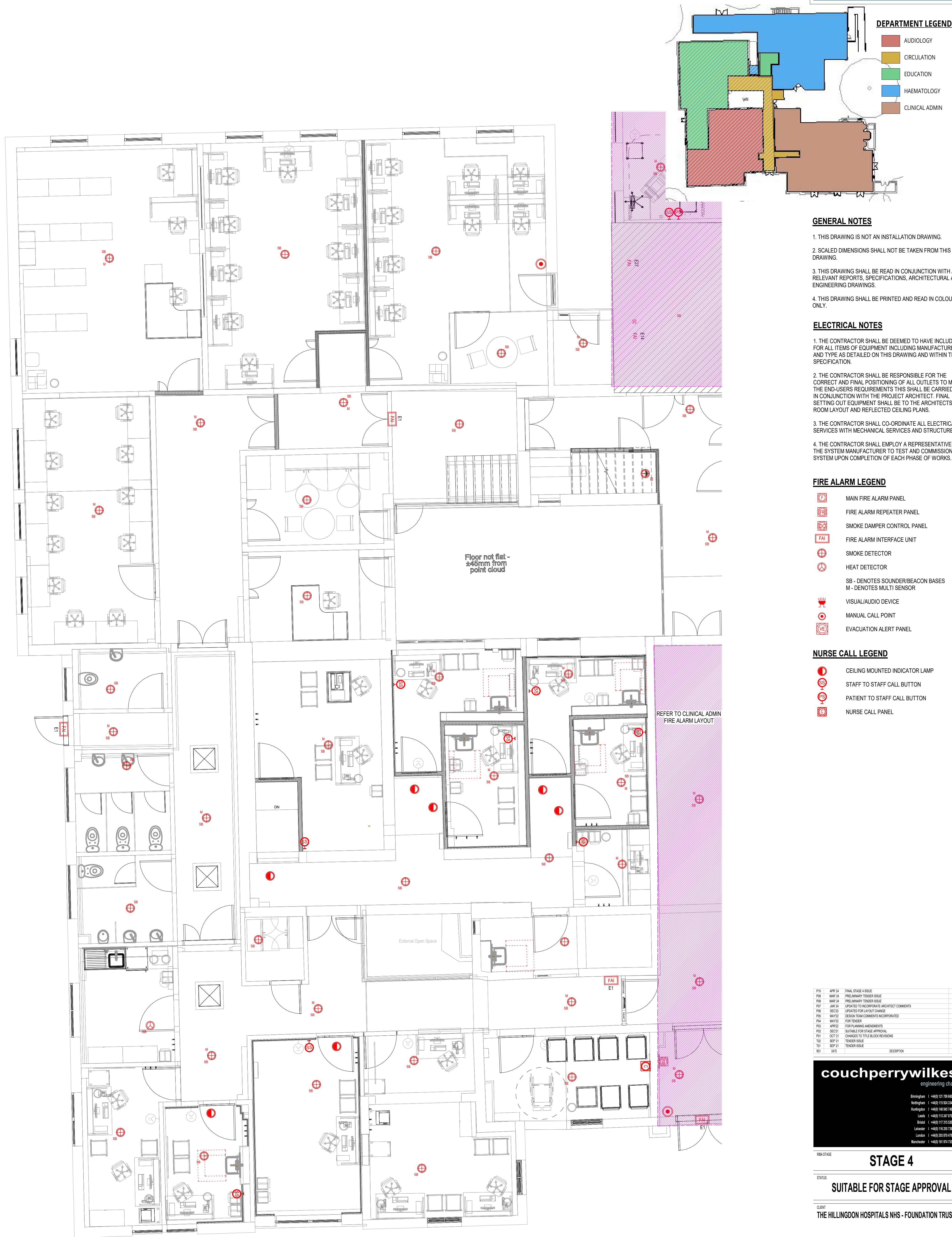
P10	CPW	ZZ	00	DR	E	40001	S4	P10
-----	-----	----	----	----	---	-------	----	-----

THHFP1-CPW-ZZ-00-DR-E-40001\_S4\_P10

LINKED FILES

-HTF-LDW-XX-ZZ-M3-A-0001  
THHFP1-CRH-ZZ-ZZ-M3-S-0001














### GENERAL NOTES

1. THIS DRAWING IS NOT AN INSTALLATION DRAWING.
2. SCALED DIMENSIONS SHALL NOT BE TAKEN FROM THIS DRAWING.
3. THIS DRAWING SHALL BE READ IN CONJUNCTION WITH ALL RELEVANT REPORTS, SPECIFICATIONS, ARCHITECTURAL AND ENGINEERING DRAWINGS.
4. THIS DRAWING SHALL BE PRINTED AND READ IN COLOUR ONLY.





## ELECTRICAL NOTES

1. THE CONTRACTOR SHALL BE DEEMED TO HAVE INCLUDED FOR ALL ITEMS OF EQUIPMENT INCLUDING MANUFACTURER AND TYPE AS DETAILED ON THIS DRAWING AND WITHIN THE SPECIFICATION.
2. THE CONTRACTOR SHALL BE RESPONSIBLE FOR THE CORRECT AND FAIR POSITIONING OF ALL OUTLETS TO MEET THE END-USER'S REQUIREMENTS THIS SHALL BE CARRIED OUT IN CONJUNCTION WITH THE PROJECT ARCHITECT. FINAL SETTING OUT EQUIPMENT SHALL BE TO THE ARCHITECTS ROOM LAYOUT AND REFLECTED CEILING PLANS.
3. THE CONTRACTOR SHALL CO-ORDINATE ALL ELECTRICAL SERVICES WITH MECHANICAL SERVICES AND STRUCTURE.
4. THE CONTRACTOR SHALL EMPLOY A REPRESENTATIVE OF THE SYSTEM MANUFACTURER TO TEST AND COMMISSION EACH SYSTEM UPON COMPLETION OF EACH PHASE OF WORKS.

### FIRE ALARM LEGEND

- |   |   |
|---|---|
|  | MAIN FIRE ALARM PANEL   |
|  | FIRE ALARM REPEATER PANEL                                     |
|  | SMOKE DAMPER CONTROL PANEL                                    |
|  | FIRE ALARM INTERFACE UNIT                                     |
|  | SMOKE DETECTOR  |
|  | HEAT DETECTOR   |
|   | SB - DENOTES SOUNDER/BEACON BASES<br>M - DENOTES MULTI SENSOR |
|  | VISUAL/AUDIO DEVICE   |
|  | MANUAL CALL POINT   |
|  | EVACUATION ALERT PANEL  |

### NURSE CALL LEGEND

- |   |                                |
|---|--------------------------------|
|  | CEILING MOUNTED INDICATOR LAMP |
|  | STAFF TO STAFF CALL BUTTON     |
|  | PATIENT TO STAFF CALL BUTTON   |
|  | NURSE CALL PANEL               |

P10	APR 24	FINAL STATE 4 ISSUE	AT	RM
P09	MAR 24	PRELIMINARY TENDER ISSUE	LD	RM
P08	MAR 24	PRELIMINARY TENDER ISSUE	LD	RM
P07	JAN 24	UPDATED TO INCORPORATE ARCHITECT COMMENTS	RS	RM
P06	DEC 23	UPDATED FOR LAYOUT CHANGE	LD	RM
P05	MAY 22	DESIGN TEAM COMMENTS INCORPORATED	JG	NR
P04	MAY 22	FOR TENDER	JG	NR
P03	APR 22	FOR PLANNING AMENDMENTS	JG	NR
P02	DEC 21	SUITABLE FOR STATE APPROVAL	BP	JP
P01	OCT 21	CHANGES TO TITLE BLOCK REVISIONS	ZO	NR
T02	SEP 21	TENDER ISSUE	JG	NR
T01	SEP 21	TENDER ISSUE	JG	NR
REV	DATE	DESCRIPTION	BY	VE

## STAGE 4

STATUS

**SUITABLE FOR STAGE APPROVAL**

CLIENT

THE HILLINGDON HOSPITALS NHS - FOUNDATION TRUST

PROJEC

## HILLINGDON HOSPITAL - THE FURZE

DRAWING TITLE  
ELECTRICAL SERVICES  
GROUND FLOOR - EDUCATION & AUDIOLOGY  
FIRE ALARM LAYOUT

SCALE (A1)	DATE	BY	VE
1:50	SEP' 21	JG	NR

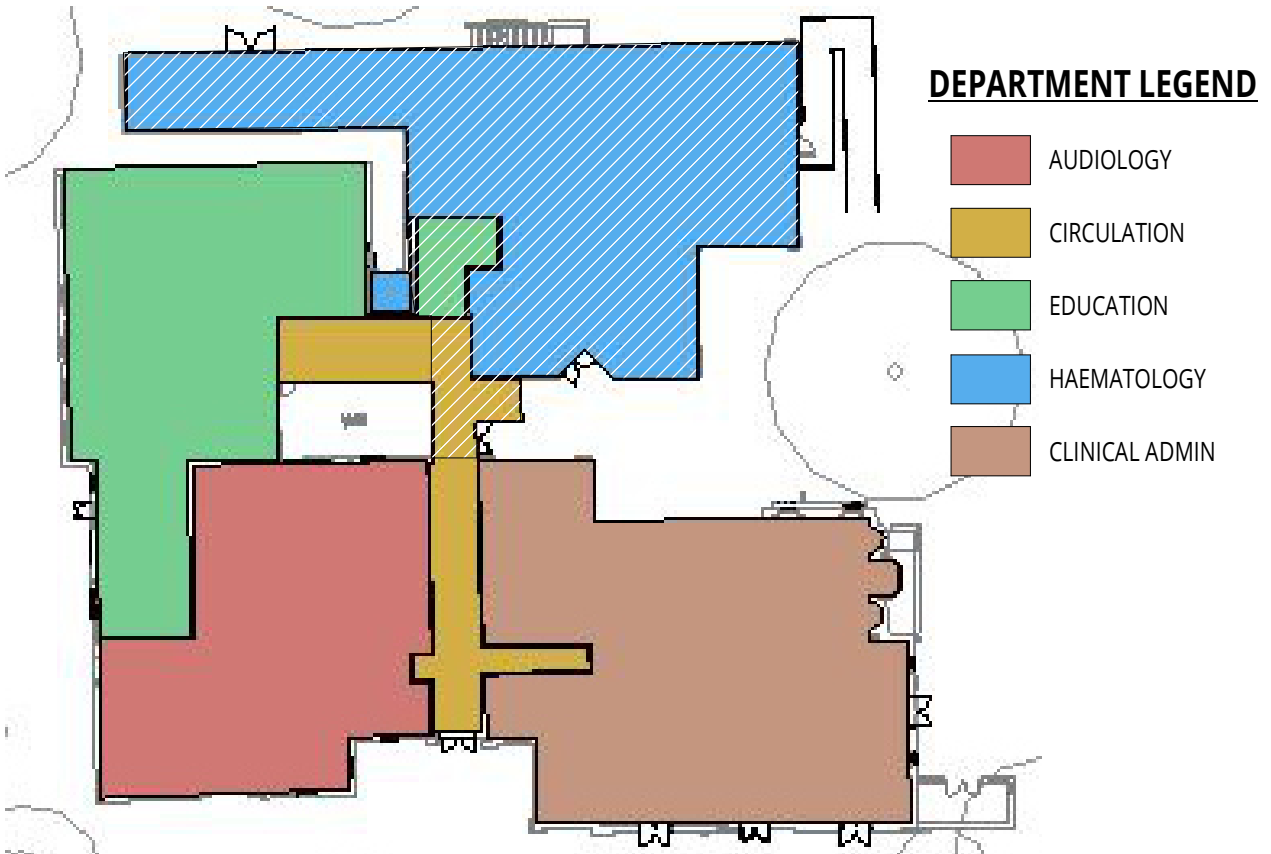
Proj ID	Originator	Volume	Level	Type	Role	Number	Suitability	Revision
THHFP1	CPW	ZZ	00	DR	E	40002	S4	P10

THHFP1-CPW-ZZ-00-DR-E-40002\_S4\_P10

LINKED FILES

- HTF-LDW-XX-ZZ-M3-A-0001
- THHFP1-CRH-ZZ-ZZ-M3-S-0001





**FIRE ALARM LEGEND**

- MAIN FIRE ALARM PANEL
- FIRE ALARM REPEATER PANEL
- SMOKE DAMPER CONTROL PANEL
- FIRE ALARM INTERFACE UNIT
- SMOKE DETECTOR
- HEAT DETECTOR
- SB - DENOTES SOUNDER/BEACON BASES  
M - DENOTES MULTI SENSOR
- VISUAL/AUDIO DEVICE
- MANUAL CALL POINT
- EVACUATION ALERT PANEL

**NURSE CALL LEGEND**

- CEILING MOUNTED INDICATOR LAMP
- STAFF TO STAFF CALL BUTTON
- PATIENT TO STAFF CALL BUTTON
- NURSE CALL PANEL

**GENERAL NOTES**

- THIS DRAWING IS NOT AN INSTALLATION DRAWING.
- SCALED DIMENSIONS SHALL NOT BE TAKEN FROM THIS DRAWING.
- THIS DRAWING SHALL BE READ IN CONJUNCTION WITH ALL RELEVANT REPORTS, SPECIFICATIONS, ARCHITECTURAL AND ENGINEERING DRAWINGS.
- THIS DRAWING SHALL BE PRINTED AND READ IN COLOUR ONLY.

**ELECTRICAL NOTES**

- THE CONTRACTOR SHALL BE DEEMED TO HAVE INCLUDED FOR ALL ITEMS OF EQUIPMENT INCLUDING MANUFACTURER AND TYPE AS DETAILED ON THIS DRAWING AND WITHIN THE SPECIFICATION.
- THE CONTRACTOR SHALL BE RESPONSIBLE FOR THE CORRECT AND FINAL POSITIONING OF ALL OUTLETS TO MEET THE END-USERS REQUIREMENTS THIS SHALL BE CARRIED OUT IN CONJUNCTION WITH THE PROJECT ARCHITECT. FINAL SETTING OUT EQUIPMENT SHALL BE TO THE ARCHITECTS ROOM LAYOUT AND REFLECTED CEILING PLANS.
- THE CONTRACTOR SHALL CO-ORDINATE ALL ELECTRICAL SERVICES WITH MECHANICAL SERVICES AND STRUCTURE.
- THE CONTRACTOR SHALL EMPLOY A REPRESENTATIVE OF THE SYSTEM MANUFACTURER TO TEST AND COMMISSION EACH SYSTEM UPON COMPLETION OF EACH PHASE OF WORKS.

P10	APR 24	UPDATED TO INCORPORATE ARCHITECTS COMMENTS (PREVIOUS 11/04/2024)	LD	RAI
P09	APR 24	FINAL STAGE 4 ISSUE	AT	RAI
P08	MAR 24	PRELIMINARY TENDER ISSUE	LD	RAI
P07	MAR 24	PRELIMINARY TENDER ISSUE	LD	RAI
P06	JAN 24	UPDATED TO INCORPORATE ARCHITECT COMMENTS	RG	RAI
P05	DEC 23	UPDATED FOR LAYOUT CHANGE	LD	RAI
P04	MAY 22	FOR TENDER	JG	NR
P03	APR 22	FOR PLANNING AMENDMENTS	JG	NR
P02	DEC 21	SUITABLE FOR STAGE APPROVAL	BP	JP
P01	OCT 21	CHANGES TO TITLE BLOCK REVISIONS	ZD	NR
T02	SEP 21	TENDER ISSUE	JG	NR
T01	SEP 21	TENDER ISSUE	JG	NR
REV	DATE	DESCRIPTION	BY	VC

**couchperrywilkes**  
engineering change

Birmingham I +44(0) 121 708 6603  
Nottingham I +44(0) 115 524 3348  
Huddersfield I +44(0) 148 345 7483  
Leeds I +44(0) 113 247 0709  
Bristol I +44(0) 117 235 5001  
Leicester I +44(0) 115 225 7397  
London I +44(0) 203 878 4709  
Manchester I +44(0) 161 574 7538

RIBA STAGE

**STAGE 4**

STATUS  
**SUITABLE FOR STAGE APPROVAL**

CLIENT  
**THE HILLINGDON HOSPITALS NHS - FOUNDATION TRUST**

PROJECT  
**HILLINGDON HOSPITAL - THE FURZE**

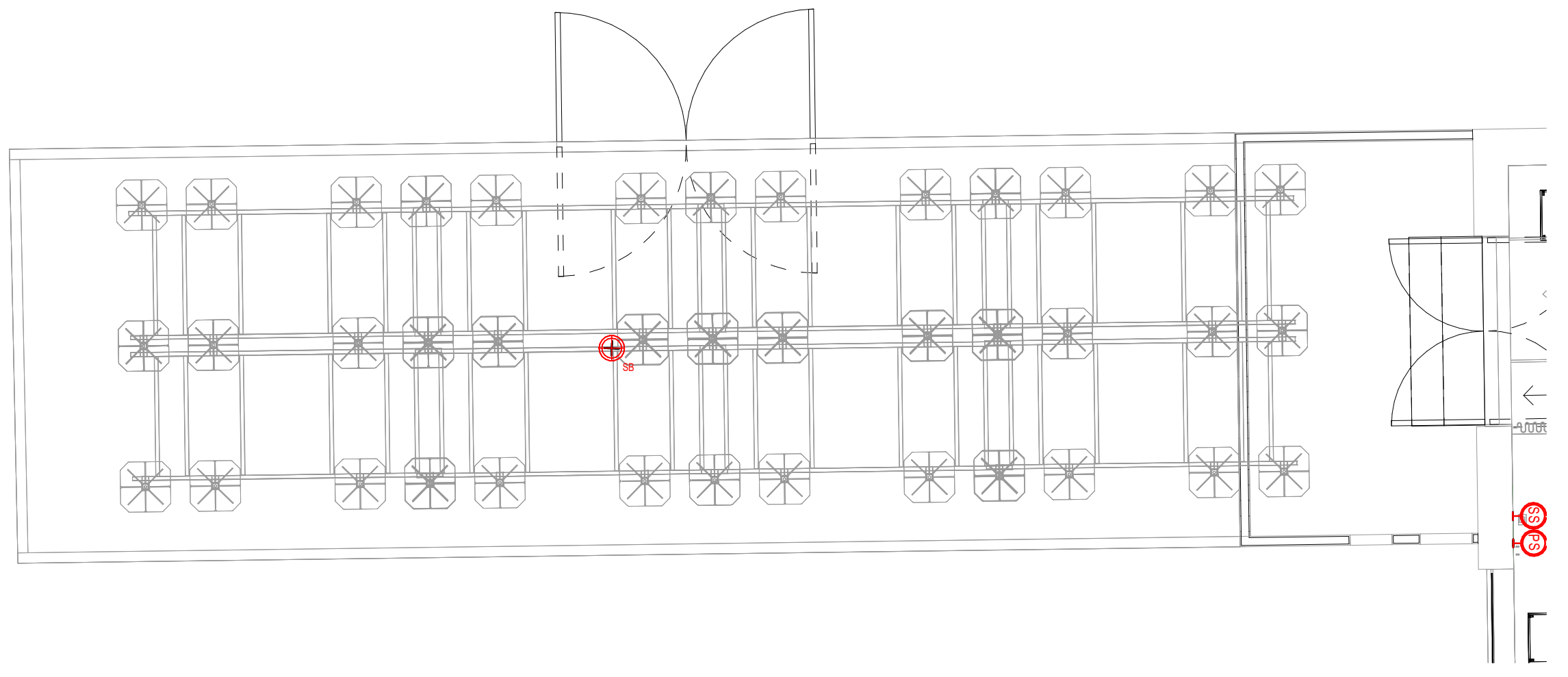
DRAWING TITLE  
**ELECTRICAL SERVICES  
GROUND FLOOR - HAEMATOLOGY  
FIRE ALARM LAYOUT**

SCALE (A1) DATE BY VE  
**1:50 SEP' 21 JG NR**

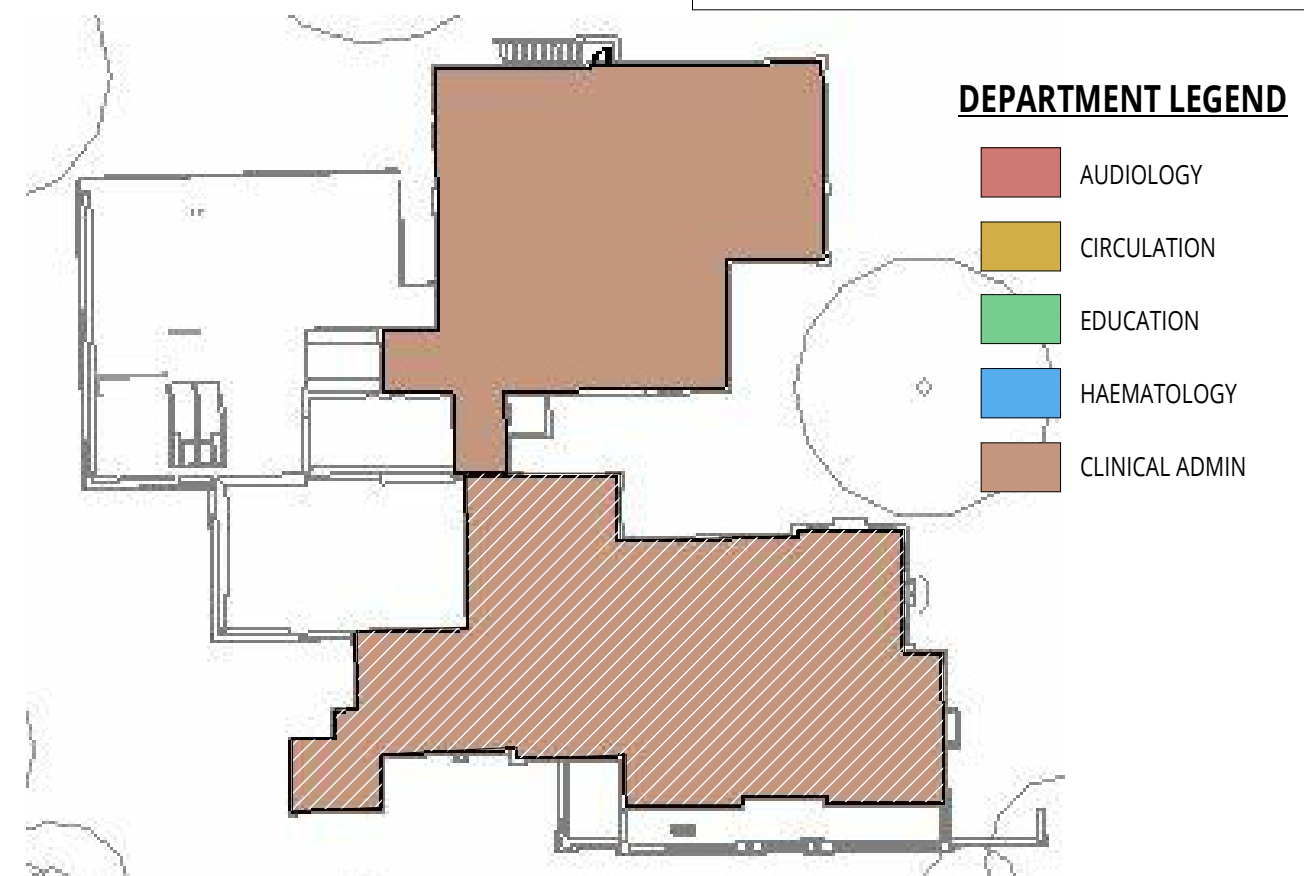
REV	DATE	DESCRIPTION	BY	VC	STATUS
THHFP1	CPW	22	08	DR	E 40003 S4 P10

**THHFP1-CPW-ZZ-00-DR-E-40003\_S4\_P10**

LINKED FILES  
-HTF-LDW-XX-ZZ-M3-A-0001  
THHFP1-CRH-ZZ-ZZ-M3-S-0001







- FIRE ALARM LEGEND**
- MAIN FIRE ALARM PANEL
  - FIRE ALARM REPEATER PANEL
  - SMOKE DAMPER CONTROL PANEL
  - FIRE ALARM INTERFACE UNIT
  - SMOKE DETECTOR
  - HEAT DETECTOR
  - SB - DENOTES SOUNDER/BEACON BASES  
M - DENOTES MULTI SENSOR
  - VISUAL/AUDIO DEVICE
  - MANUAL CALL POINT
  - EVACUATION ALERT PANEL

- NURSE CALL LEGEND**
- CEILING MOUNTED INDICATOR LAMP
  - STAFF TO STAFF CALL BUTTON
  - PATIENT TO STAFF CALL BUTTON
  - NURSE CALL PANEL

- GENERAL NOTES**
- THIS DRAWING IS NOT AN INSTALLATION DRAWING.
  - SCALED DIMENSIONS SHALL NOT BE TAKEN FROM THIS DRAWING.
  - THIS DRAWING SHALL BE READ IN CONJUNCTION WITH ALL RELEVANT REPORTS, SPECIFICATIONS, ARCHITECTURAL AND ENGINEERING DRAWINGS.
  - THIS DRAWING SHALL BE PRINTED AND READ IN COLOUR ONLY.
- ELECTRICAL NOTES**
- THE CONTRACTOR SHALL BE DEEMED TO HAVE INCLUDED FOR ALL ITEMS OF EQUIPMENT INCLUDING MANUFACTURER AND TYPE AS DETAILED ON THIS DRAWING AND WITHIN THE SPECIFICATION.
  - THE CONTRACTOR SHALL BE RESPONSIBLE FOR THE CORRECT AND FINAL POSITIONING OF ALL OUTLETS TO MEET THE END-USERS REQUIREMENTS THIS SHALL BE CARRIED OUT IN CONJUNCTION WITH THE PROJECT ARCHITECT. FINAL SETTING OUT EQUIPMENT SHALL BE TO THE ARCHITECTS ROOM LAYOUT AND REFLECTED CEILING PLANS.
  - THE CONTRACTOR SHALL CO-ORDINATE ALL ELECTRICAL SERVICES WITH MECHANICAL SERVICES AND STRUCTURE.
  - THE CONTRACTOR SHALL EMPLOY A REPRESENTATIVE OF THE SYSTEM MANUFACTURER TO TEST AND COMMISSION EACH SYSTEM UPON COMPLETION OF EACH PHASE OF WORKS.

P10	APR 24	UPDATED TO INCORPORATE ARCHITECTS COMMENTS (RECEIVED 11/04/2024)	LD	RAI
P09	APR 24	FINAL STAGE 4 ISSUE	AT	RAI
P08	MAR 24	PRELIMINARY TENDER ISSUE	LD	RAI
P07	MAR 24	PRELIMINARY TENDER ISSUE	LD	RAI
P06	JAN 20	UPDATED TO INCORPORATE ARCHITECT COMMENTS	RG	RAI
P05	DEC23	UPDATED FOR LAYOUT CHANGE	LD	RAI
P04	MAY22	FOR TENDER	JG	NR
P03	APR22	FOR PLANNING AMENDMENTS	JG	NR
P02	DEC21	SUITABLE FOR STAGE APPROVAL	BP	JP
P01	OCT 21	CHANGES TO TITLE BLOCK REVISIONS	ZD	NR
T02	SEP 21	TENDER ISSUE	JG	NR
T01	SEP 21	TENDER ISSUE	JG	NR
REV	DATE	DESCRIPTION	BY	VE

**couchperrywilkes**<sup>®</sup>  
engineering change

Birmingham | +44(0) 121 709 6603  
Nottingham | +44(0) 115 524 3343  
Huddersfield | +44(0) 148 345 7483  
Leeds | +44(0) 113 257 0709  
Bristol | +44(0) 117 235 5201  
Leicester | +44(0) 115 225 7397  
London | +44(0) 203 876 4759  
Manchester | +44(0) 161 574 7535

RIBA STAGE

**STAGE 4**

STATUS

**SUITABLE FOR STAGE APPROVAL**

CLIENT

**THE HILLINGDON HOSPITALS NHS - FOUNDATION TRUST**

PROJECT

**HILLINGDON HOSPITAL - THE FURZE**

DRAWING TITLE

**ELECTRICAL SERVICES  
FIRST FLOOR - CLINICAL ADMIN  
FIRE ALARM LAYOUT**

SCALE (A1)

**1:50**

DATE

**SEP' 21**

BY

**JG**

VE

**NR**

P10	CPW	ZZ	01	DR	E	NO	DATE	SHEET	OF
THHFP1	CPW	ZZ	01	DR	E	40001	S4	P10	

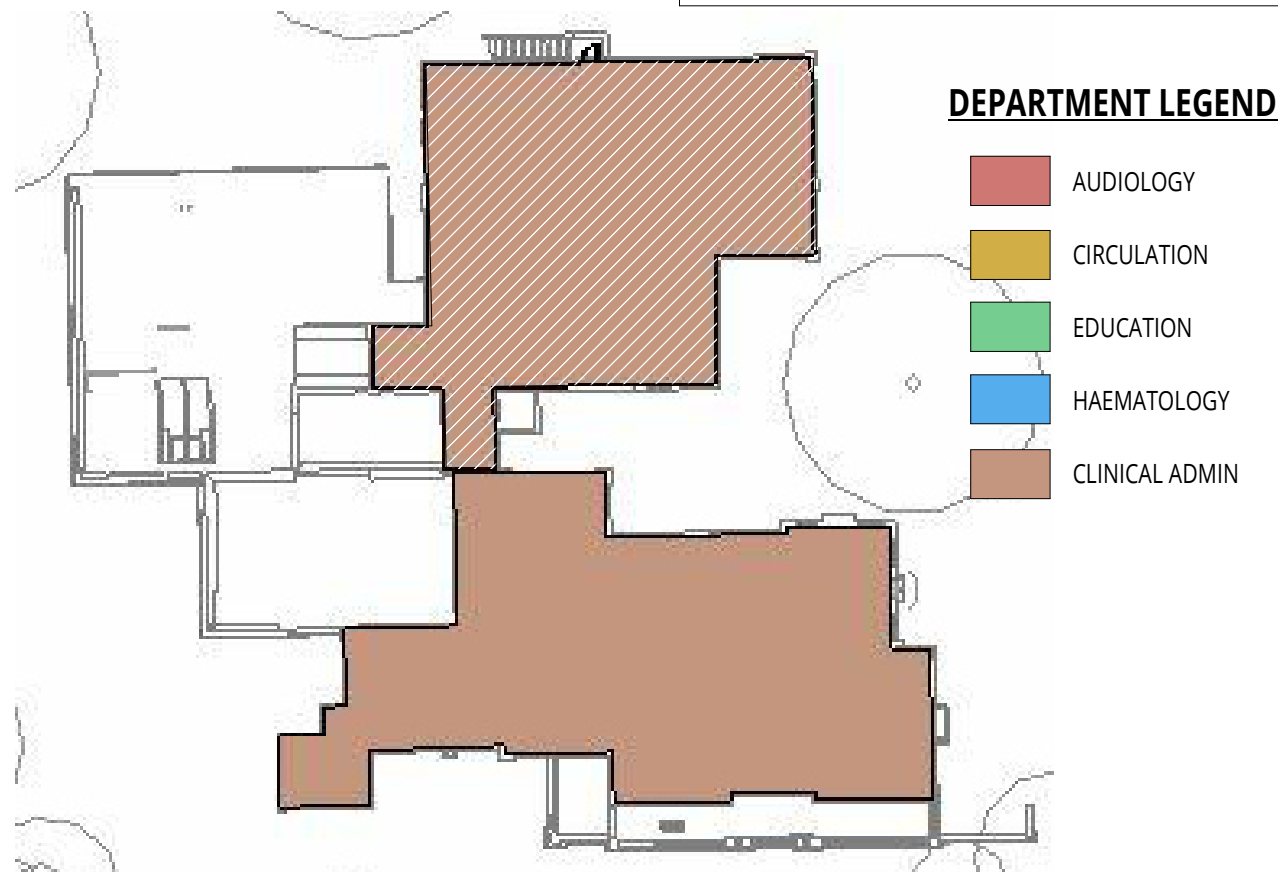
THHFP1-CPW-ZZ-01-DR-E-40001\_S4\_P10

CPW Project No. 240208

LINKED FILES

-HTF-LDW-XX-ZZ-M3-A-0001  
THHFP1-CRH-ZZ-ZZ-M3-S-0001





**FIRE ALARM LEGEND**

- MAIN FIRE ALARM PANEL
- FIRE ALARM REPEATER PANEL
- SMOKE DAMPER CONTROL PANEL
- FIRE ALARM INTERFACE UNIT
- SMOKE DETECTOR
- HEAT DETECTOR
- SB - DENOTES SOUNDER/BEACON BASES  
M - DENOTES MULTI SENSOR
- VISUAL/AUDIO DEVICE
- MANUAL CALL POINT
- EVACUATION ALERT PANEL

**NURSE CALL LEGEND**

- CEILING MOUNTED INDICATOR LAMP
- STAFF TO STAFF CALL BUTTON
- PATIENT TO STAFF CALL BUTTON
- NURSE CALL PANEL

**GENERAL NOTES**

- THIS DRAWING IS NOT AN INSTALLATION DRAWING.
- SCALED DIMENSIONS SHALL NOT BE TAKEN FROM THIS DRAWING.
- THIS DRAWING SHALL BE READ IN CONJUNCTION WITH ALL RELEVANT REPORTS, SPECIFICATIONS, ARCHITECTURAL AND ENGINEERING DRAWINGS.
- THIS DRAWING SHALL BE PRINTED AND READ IN COLOUR ONLY.

**ELECTRICAL NOTES**

- THE CONTRACTOR SHALL BE DEEMED TO HAVE INCLUDED FOR ALL ITEMS OF EQUIPMENT INCLUDING MANUFACTURER AND TYPE AS DETAILED ON THIS DRAWING AND WITHIN THE SPECIFICATION.
- THE CONTRACTOR SHALL BE RESPONSIBLE FOR THE CORRECT AND FINAL POSITIONING OF ALL OUTLETS TO MEET THE END-USERS REQUIREMENTS THIS SHALL BE CARRIED OUT IN CONJUNCTION WITH THE PROJECT ARCHITECT. FINAL SETTING OUT EQUIPMENT SHALL BE TO THE ARCHITECTS ROOM LAYOUT AND REFLECTED CEILING PLANS.
- THE CONTRACTOR SHALL CO-ORDINATE ALL ELECTRICAL SERVICES WITH MECHANICAL SERVICES AND STRUCTURE.
- THE CONTRACTOR SHALL EMPLOY A REPRESENTATIVE OF THE SYSTEM MANUFACTURER TO TEST AND COMMISSION EACH SYSTEM UPON COMPLETION OF EACH PHASE OF WORKS.

REV	DATE	DESCRIPTION	BY	VE
P01	APR 24	FINAL STAGE 4 ISSUE	AT	RL
P02	MAR 24	PRELIMINARY TENDER ISSUE	LD	RL
P03	MAR 24	PRELIMINARY TENDER ISSUE	LD	RL
P04	JAN 20	UPDATED TO INCORPORATE ARCHITECT COMMENTS	RG	RL
P05	DEC 20	UPDATED FOR LAYOUT CHANGE	LD	RL
P06	MAY 22	FOR TENDER	JG	NR
P07	APR 22	FOR PLANNING AMENDMENTS	JG	NR
P08	DEC 21	SUITABLE FOR STAGE APPROVAL	BP	JP
P09	OCT 21	CHANGES TO TITLE BLOCK REVISIONS	ZD	NR
T01	SEP 21	TENDER ISSUE	JG	NR
T02	SEP 21	TENDER ISSUE	JG	NR
T03	SEP 21	TENDER ISSUE	JG	NR

**couchperrywilkes**  
engineering change

Birmingham | +44(0) 121 708 6603  
Nottingham | +44(0) 115 524 3343  
Huddersfield | +44(0) 148 345 7483  
Leeds | +44(0) 113 247 0709  
Bristol | +44(0) 117 335 5001  
Leicester | +44(0) 115 255 7397  
London | +44(0) 203 878 4709  
Manchester | +44(0) 161 574 7538

**STAGE 4**

**SUITABLE FOR STAGE APPROVAL**

CLIENT  
THE HILLINGDON HOSPITALS NHS - FOUNDATION TRUST

PROJECT  
HILLINGDON HOSPITAL - THE FURZE

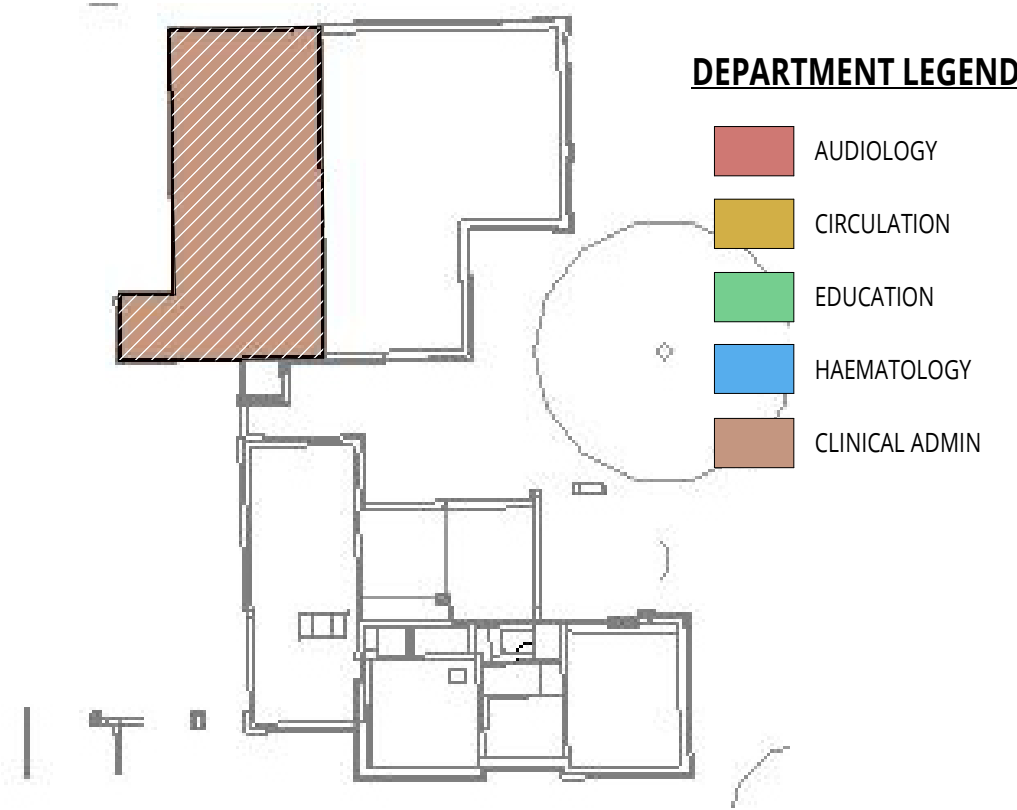
DRAWING TITLE  
ELECTRICAL SERVICES  
FIRST FLOOR - CLINICAL ADMIN  
FIRE ALARM LAYOUT

SCALE (A1) DATE BY VE  
1:50 SEP' 21 JG NR

THHFP1 CPW ZZ 01 DR E 40002 S4 P09

THHFP1-CPW-ZZ-01-DR-E-40002\_S4\_P09

LINKED FILES  
-HTF-LDW-XX-ZZ-M3-A-0001  
THHFP1-CRH-ZZ-ZZ-M3-S-0001



DEPARTMENT LEGEND

- AUDIOLOGY
- CIRCULATION
- EDUCATION
- HAEMATOTOLOGY
- CLINICAL ADMIN

FIRE ALARM LEGEND

- MAIN FIRE ALARM PANEL
- FIRE ALARM REPEATER PANEL
- SMOKE DAMPER CONTROL PANEL
- FIRE ALARM INTERFACE UNIT
- SMOKE DETECTOR
- HEAT DETECTOR
- SB - DENOTES SOUNDER/BEACON BASES  
M - DENOTES MULTI SENSOR
- VISUAL/AUDIO DEVICE
- MANUAL CALL POINT
- EVACUATION ALERT PANEL

NURSE CALL LEGEND

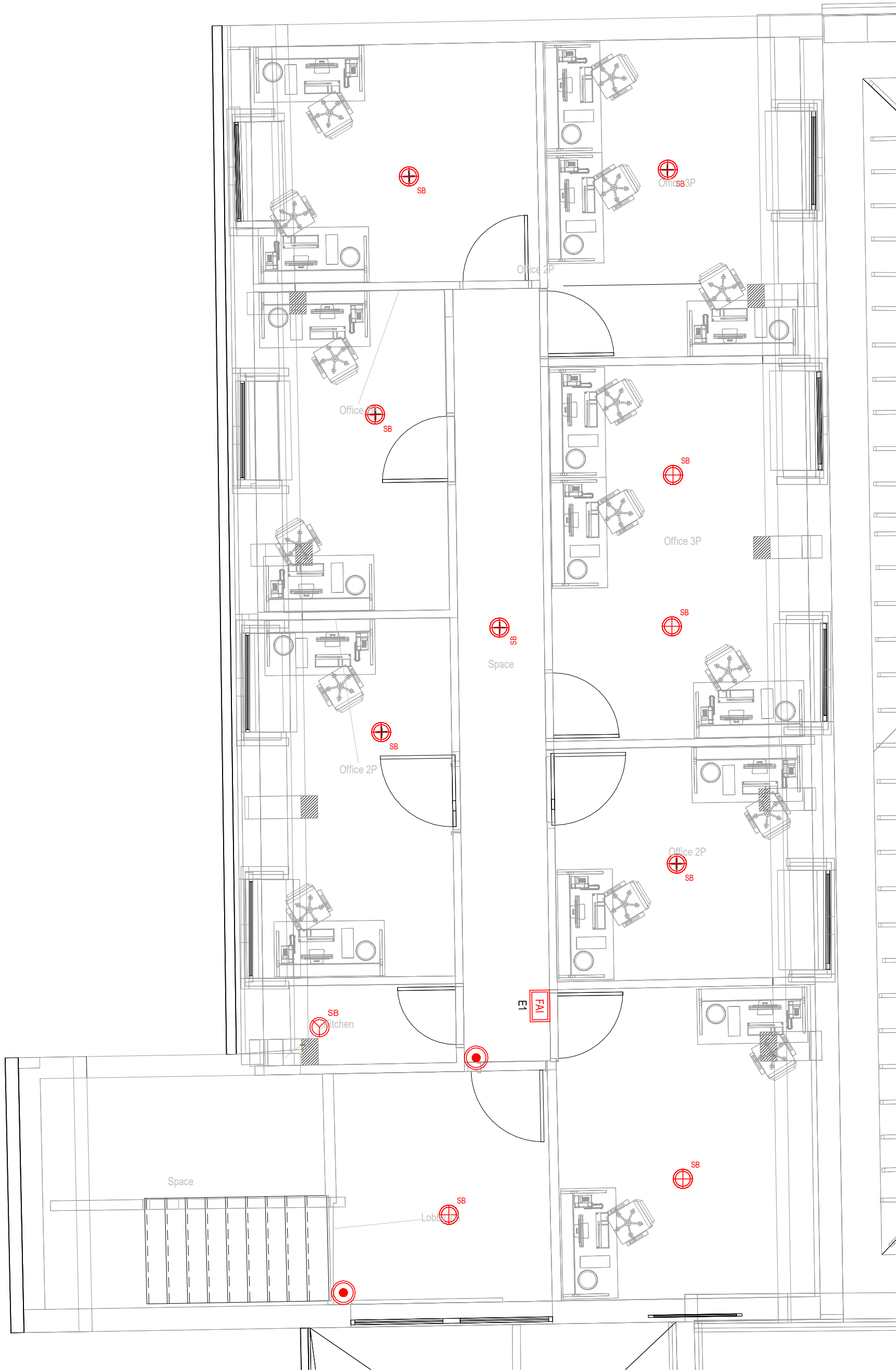
- CEILING MOUNTED INDICATOR LAMP
- STAFF TO STAFF CALL BUTTON
- PATIENT TO STAFF CALL BUTTON
- NURSE CALL PANEL

GENERAL NOTES

- THIS DRAWING IS NOT AN INSTALLATION DRAWING.
- SCALED DIMENSIONS SHALL NOT BE TAKEN FROM THIS DRAWING.
- THIS DRAWING SHALL BE READ IN CONJUNCTION WITH ALL RELEVANT REPORTS, SPECIFICATIONS, ARCHITECTURAL AND ENGINEERING DRAWINGS.
- THIS DRAWING SHALL BE PRINTED AND READ IN COLOUR ONLY.

ELECTRICAL NOTES

- THE CONTRACTOR SHALL BE DEEMED TO HAVE INCLUDED FOR ALL ITEMS OF EQUIPMENT INCLUDING MANUFACTURER AND TYPE AS DETAILED ON THIS DRAWING AND WITHIN THE SPECIFICATION.
- THE CONTRACTOR SHALL BE RESPONSIBLE FOR THE CORRECT AND FINAL POSITIONING OF ALL OUTLETS TO MEET THE END-USERS REQUIREMENTS THIS SHALL BE CARRIED OUT IN CONJUNCTION WITH THE PROJECT ARCHITECT. FINAL SETTING OUT EQUIPMENT SHALL BE TO THE ARCHITECTS ROOM LAYOUT AND REFLECTED CEILING PLANS.
- THE CONTRACTOR SHALL CO-ORDINATE ALL ELECTRICAL SERVICES WITH MECHANICAL SERVICES AND STRUCTURE.
- THE CONTRACTOR SHALL EMPLOY A REPRESENTATIVE OF THE SYSTEM MANUFACTURER TO TEST AND COMMISSION EACH SYSTEM UPON COMPLETION OF EACH PHASE OF WORKS.



P09	APR 24	FINAL STAGE 4 ISSUE	AT	RM
P08	MAR 24	PRELIMINARY TENDER ISSUE	LD	RM
P07	MAR 24	PRELIMINARY TENDER ISSUE	LD	RM
P06	JAN 20	UPDATED TO INCORPORATE ARCHITECT COMMENTS	RG	RM
P05	DEC 20	UPDATED FOR LAYOUT CHANGE	LD	RM
P04	MAY 22	FOR TENDER	JG	NR
P03	APR 22	FOR PLANNING AMENDMENTS	JG	NR
P02	DEC 21	SUITABLE FOR STAGE APPROVAL	BP	JP
P01	OCT 21	CHANGES TO TITLE BLOCK REVISIONS	ZD	NR
T02	SEP 21	TENDER ISSUE	JG	NR
T01	SEP 21	TENDER ISSUE	JG	NR
R01	DATE	DESCRIPTION	BP	VE

**couchperrywilkes**<sup>®</sup>  
engineering change

Birmingham

1 +44(0) 121 708 6603

1

Nottingham

1 +44(0) 115 524 3343

1

Huddersfield

1 +44(0) 148 345 7483

1

Leeds

1 +44(0) 113 247 0709

1

Bristol

1 +44(0) 117 235 5001

1

Leicester

1 +44(0) 115 225 7397

1

London

1 +44(0) 203 878 4709

1

Manchester

1 +44(0) 161 574 7535

1

RIBA STAGE

STAGE 4

STATUS

SUITABLE FOR STAGE APPROVAL

CLIENT  
THE HILLINGDON HOSPITALS NHS - FOUNDATION TRUST

PROJECT  
HILLINGDON HOSPITAL - THE FURZE

DRAWING TITLE  
ELECTRICAL SERVICES  
SECOND FLOOR - CLINICAL ADMIN  
FIRE ALARM LAYOUT

SCALE (A1) DATE BY VE  
1:50 SEP' 21 JG NR

PROJ	OWNER	NO.	REV.	DATE	BY	NO.	DATE	BY	NO.
THHFP1	CPW	ZZ	02	DR	E	40001	S4	P09	

THHFP1-CPW-ZZ-02-DR-E-40001\_S4\_P09

LINKED FILES  
-HTF-LDW-XX-ZZ-M3-A-0001  
THHFP1-CRH-ZZ-ZZ-M3-S-0001