

HEALTH AND SAFETY INFORMATION

Standards hazards and risks may not necessarily be identified on this drawing. The caution symbols that are identified, but not limited to, related to specific hazards and risks associated with this type of project.

Reference should be made to the DRA for further details.

DRA Ref No.	Description
<>	<Insert Description>
It is assumed that all works shall be undertaken by a competent contractor working, where appropriate, to an approved method statement.	

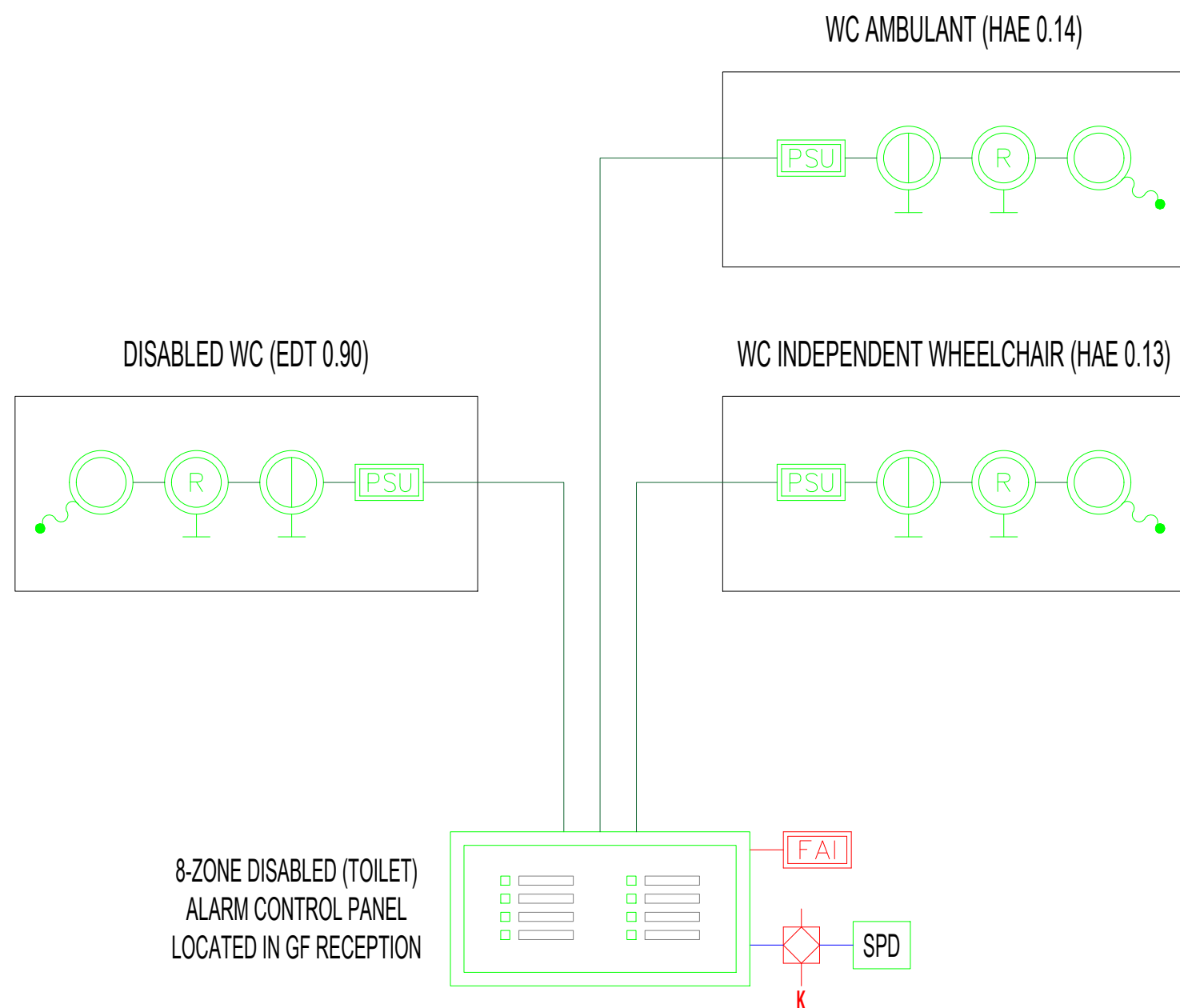
GENERAL NOTES

- THIS DRAWING SHALL BE READ IN CONJUNCTION WITH THE CPW SPECIFICATION AND ALL OTHER RELEVANT ARCHITECTURAL AND ENGINEERING DRAWING AND DOCUMENTS.
- ALL WORKS SHALL COMPLY WITH THE CURRENT 10TH EDITION WIRING REGULATIONS INCLUDING ANY AMENDMENTS AND ALL OTHER RELEVANT BRITISH STANDARDS: HEALTH TECHNICAL MEMORANDUM (HTM) AND HILLINGDON HNS FOUNDATION TRUST MECHANICAL & ELECTRICAL ENGINEERING REQUIREMENTS.
- DO NOT SCALE FROM THIS DRAWING. ALL DIMENSIONS STATED ARE IN MM UNLESS OTHERWISE STATED. ALL SETTING-OUT SHALL BE TAKEN FROM THE ARCHITECT'S DRAWINGS.
- LOCATIONS OF FIRE ALARM DEVICES ARE INDICATIVE. CONTRACTOR SHALL CO-ORDINATE REQUIREMENT WITH SPECIALIST DESIGN DRAWINGS.
- THE FIRE ALARM SYSTEM SHALL BE DESIGNED IN ACCORDANCE WITH BS 5824-1:1 CLASSIFICATION TYPE-A ALARM INCLUDING VDD DETECTION, ALLOW FOR VDD DETECTION WHERE VDD'S EXCEED MORE THAN 80MM IN DEPTH.
- PROPOSED FIRE ALARM SYSTEM DESIGN SHALL BE FURTHER REVIEWED UPON RECEIPT OF FIRE STRATEGY AND ACCESS CONTROL STRATEGY DOCUMENTATIONS.

FIRE ALARM & DISABLED REFUGE LEGEND & SYMBOLS	
	FIRE ALARM PANEL
	FIRE ALARM REPEATER PANEL
	SMOKE DAMPER PANEL
	FIRE ALARM INTERFACE
	SMOKE DETECTOR
	MANUAL CALL POINT
	WALL MOUNTED SOUNDER AND BEACON
	DISABLED (TOILET) ALARM CONTROL PANEL
	NURSE CALL SYSTEM CONTROL PANEL
	POWER SUPPLY UNIT
	WALL MOUNTED RESET UNIT
	WALL MOUNTED ASSISTANCE REQUIRED CALL POINT
	WALL MOUNTED STAFF TO STAFF CALL POINT C/W REASSURANCE INDICATOR & RESET
	WALL MOUNTED PATIENT TO STAFF CALL POINT C/W REASSURANCE INDICATOR & RESET
	WALL MOUNTED GROUP INDICATOR LIGHT C/W TONE GENERATOR
	CEILING PULL CORD C/W HIGH & LOW LEVEL HANDLES
	4 CORE SECURITY CABLE
	15mm PH10 (ENHANCED) FIRE ALARM CABLE FOR FIRE ALARM INTERFACE
	15mm 1.525 SINGLE CORE CABLE (84918)
	TYPE 3 SURGE PROTECTION DEVICE
	ACCESS CONTROL PANEL

FIRST FLOOR

FIRST FLOOR



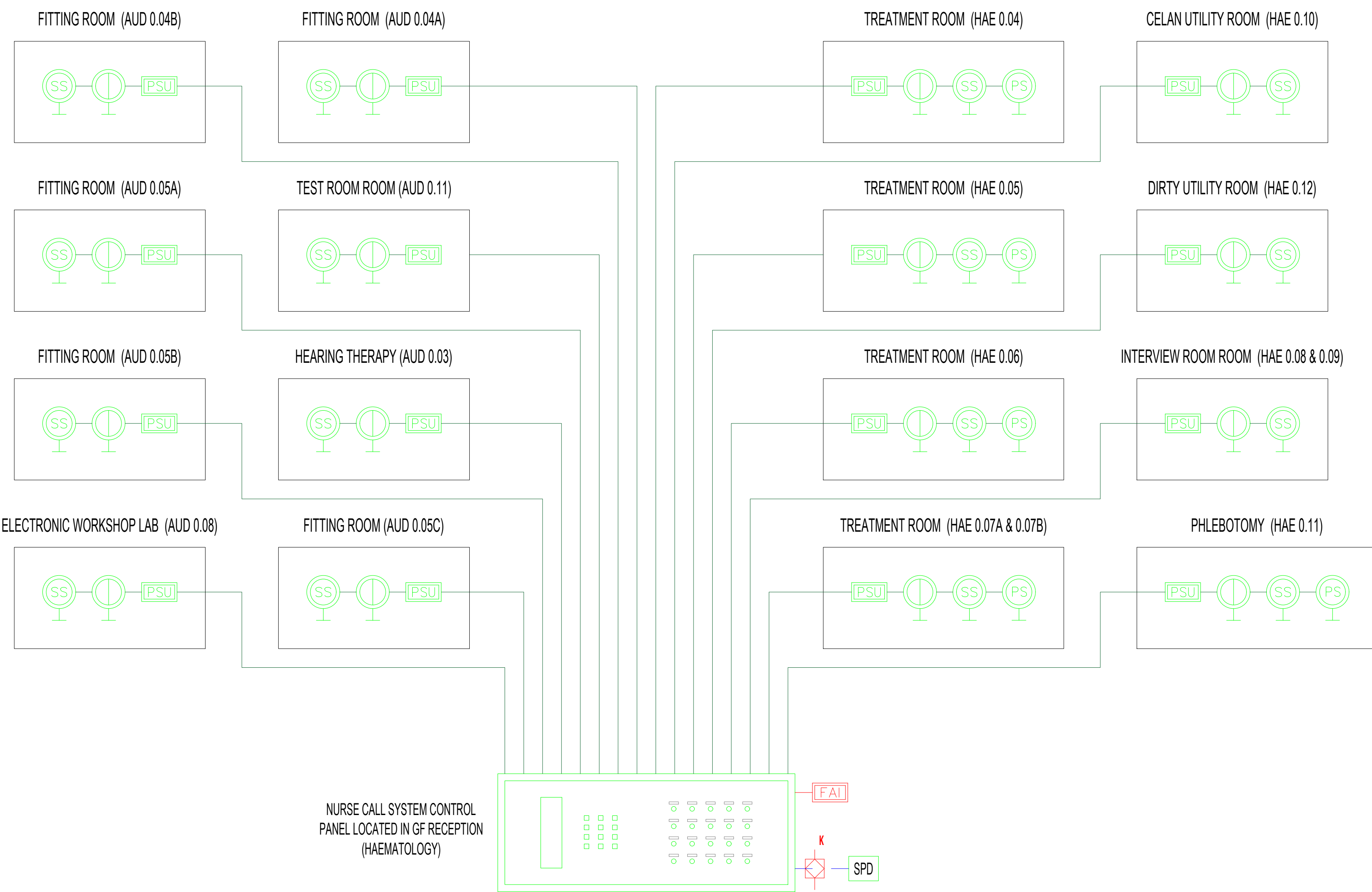
GROUND FLOOR

GROUND FLOOR

DISABLED (TOILET) ALARM SYSTEM SCHEMATIC

FIRST FLOOR

FIRST FLOOR



GROUND FLOOR

GROUND FLOOR

NURSE CALL SYSTEM SCHEMATIC

ROOF

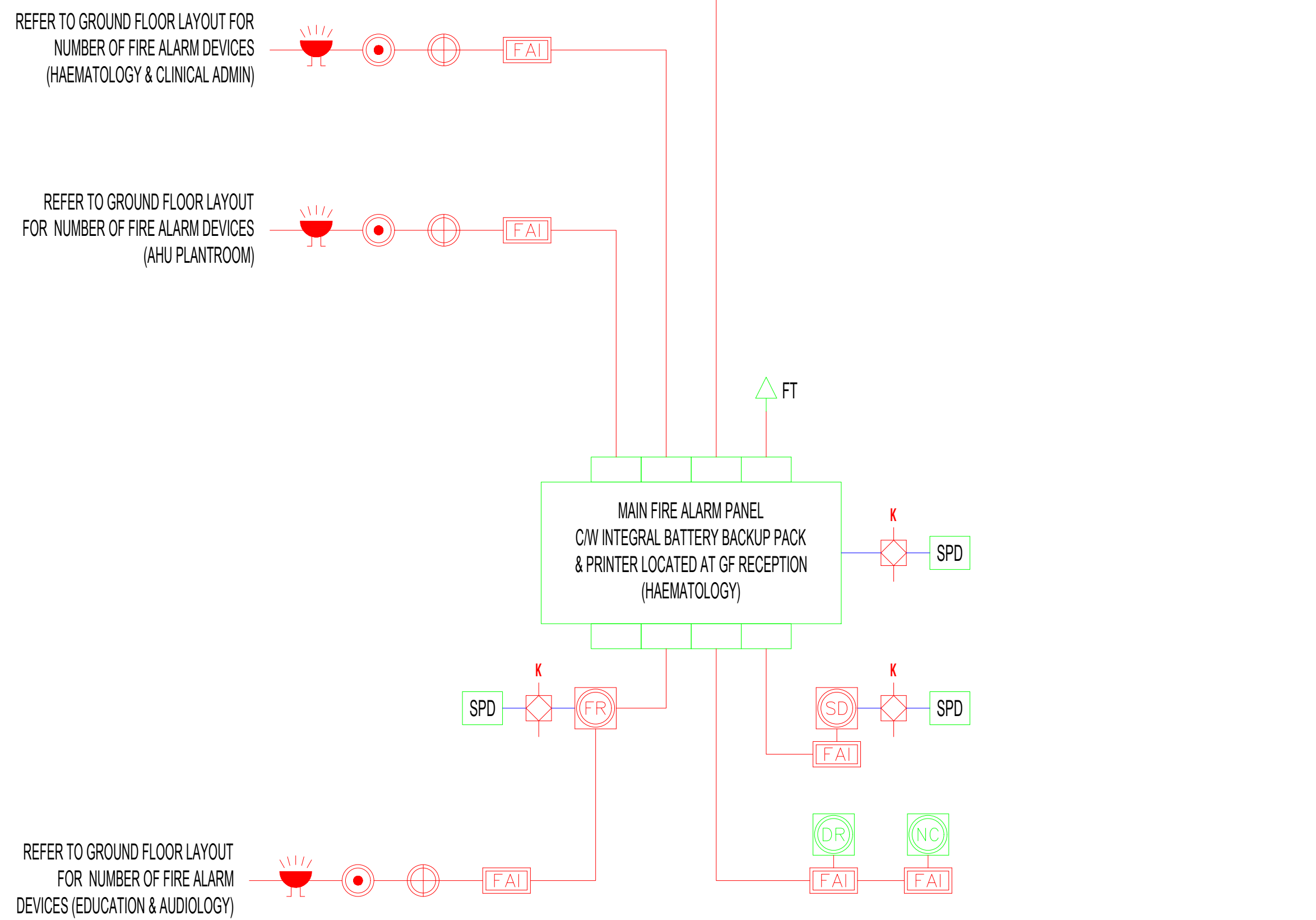
ROOF

SECOND

SECOND

FIRST FLOOR

FIRST FLOOR



GROUND FLOOR

GROUND FLOOR

FIRE ALARM SYSTEM SCHEMATIC

CABLE SCHEDULE						
CABLE REF NO	CABLE TYPE	NO. OF CORES IN CABLE	NO. OF CABLES IN PARALLEL	L+N CONDUCTOR mm ²	CPC mm ²	CABLE LENGTH
2	Cu/XLPE/SW/LSOH	4C	2	95	2 x 95 + ARMOUR	45
3	Cu/XLPE/SW/LSOH (FR)	4C	2	95	95 + ARMOUR	45
4	SPARE	-	-	-	-	-
5	Cu/XLPE/SW/LSOH	4C	1	50	50 + ARMOUR	30
6	Cu/XLPE/SW/LSOH	4C	1	50	50 + ARMOUR	50
7	Cu/XLPE/SW/LSOH	4C	1	50	50 + ARMOUR	15
8	Cu/XLPE/SW/LSOH	4C	1	50	50 + ARMOUR	25
9	Cu/XLPE/SW/LSOH	2C	1	10	10 + ARMOUR	20
10	SPARE	-	-	-	-	-
11	SPARE	-	-	-	-	-
12	Cu/XLPE/SW/LSOH	4C	1	50	50 + ARMOUR	40
13	Cu/XLPE/SW/LSOH	4C	1	35	35 + ARMOUR	10

ALL LENGTHS IDENTIFIED WITHIN THE CABLE SCHEDULES ARE PROVIDED FOR DESIGN CALCULATION PURPOSES ONLY. FOR TENDER, THE CONTRACTOR SHALL UNDERTAKE THEIR OWN MEASUREMENTS AND MAKE SUFFICIENT ALLOWANCES WITHIN THEIR TENDER RETURNS. PRIOR TO PROCUREMENT. THE CONTRACTOR SHALL UNDERTAKE SITE MEASUREMENTS TO VERIFY CABLE LENGTHS AGAINST DESIGN AND IDENTIFY ANY DISCREPANCIES WHERE THE INDICATED LENGTH IS EXCEEDED. THE SITE MEASUREMENT SHALL BE UNDERTAKEN IN SUFFICIENT TIME TO ALLOW THE ENGINEER TO UNDERTAKE FINAL CHECKS TO BE UNDERTAKEN ON CABLE SIZING.

CABLE SCHEDULE						
CABLE REF NO	CABLE TYPE	NO. OF CORES IN CABLE	NO. OF CABLES IN PARALLEL	L+N CONDUCTOR mm ²	CPC mm ²	CABLE LENGTH
14	SPARE	-	-	-	-	-
15	SPARE	-	-	-	-	-
16	Cu/XLPE/SW/LSOH (FR)	4C	1	50	50 + ARMOUR	5
17	Cu/XLPE/SW/LSOH (FR)	4C	1	50	50 + ARMOUR	40
18	Cu/XLPE/SW/LSOH (FR)	4C	1	50	50 + ARMOUR	20
19	Cu/XLPE/SW/LSOH (FR)	4C	1	10	10 + ARMOUR	20
20	SPARE	-	-	-	-	-
21	Cu/XLPE/SW/LSOH (FR)	2C	1	10	10 + ARMOUR	20
22	SPARE	-	-	-	-	-
23	SPARE	-	-	-	-	-
24	FP200 (FR)	2C+E	1	2.5	2.5	10
25	FP200 (FR)	2C+E	1	2.5	2.5	10
26	FP200 (FR)	2C+E	1	2.5	2.5	10

GENERAL NOTES:

- THIS DRAWING SHALL BE READ IN CONJUNCTION WITH THE SPECIFICATION AND ALL OTHER RELEVANT ARCHITECTURAL AND ENGINEERING DRAWING AND DOCUMENTS.
- ALL WORKS SHALL COMPLY WITH THE CURRENT 18TH EDITION WIRING REGULATIONS INCLUDING ANY AMENDMENTS AND ALL OTHER RELEVANT BRITISH STANDARDS, HEALTH TECHNICAL MEMORANDUM (HTM), AND THE HILLINGDON NHS FOUNDATION TRUST MECHANICAL & ELECTRICAL ENGINEERING REQUIREMENTS. SURGE PROTECTION DEVICES SHALL BE PROVIDED THROUGHOUT THE ELECTRICAL INSTALLATION
- THIS DRAWING IS AN INDICATIVE LAYOUT ONLY, DEMONSTRATING THE CONCEPTUAL REQUIREMENTS CORRELATING WITH THE AGREED SCHEMATIC SOLUTIONS. THE PURPOSE OF THIS DRAWING IS TO DEMONSTRATE DESIGN INTENT, FOR FURTHER DEVELOPMENT BY THE RELEVANT SERVICES DESIGNER ONLY.

LEGEND & SYMBOLS

	TP+N MCB DISTRIBUTION BOARD
	SP+N MCB DISTRIBUTION BOARD
	TP+N SPLIT LIGHTING AND POWER MCB DISTRIBUTION BOARD. EACH SIDE TO BE SEPARATELY METERED
	CONTROL PANEL
	MOULDED CASE CIRCUIT BREAKER, FRAME RATING AS SHOWN
	FUSE SWITCH, FRAME RATING AS SHOWN
	SP+N ISOLATOR (REFER TO PLAN FOR RATING)
	TP+N ISOLATOR (REFER TO PLAN FOR RATING)
	DOUBLE POLE KEY ISOLATOR (ALL ISOLATORS ASSOCIATED TO THE FIRE ALARM SERVICES TO BE 'RED IN FINISH')
	ELECTRONIC MULTIFUNCTION METER
	TRANSIENT VOLTAGE SURGE SUPPRESSION DEVICE
	FIRE ALARM PANEL / FIRE REPEATER PANEL
	ASPIRATING SMOKE DETECTOR PANEL
	MAINS PROTECTION RELAY
	POWER FACTOR CORRECTION PANEL
	MANUAL TRANSFER SWITCH

P05	JUN 24	UPDATED FOLLOWING COORDINATION WITH ARCHITECTS	LD	PNL
PNL	MAY 24	REVISED TYPE OF LOW VOLTAGE SWITCH PANEL	LD	PNL
PNL	APR 24	TRAIL STAGE APPROVAL	LD	PNL
PNL	DEC 21	SUITABLE FOR STAGE APPROVAL	LD	PNL
PNL	OCT 21	CHANGES TO TITLE BLOCK	LD	PNL
PNL	SEP 21	TENDER ISSUE	LD	PNL
PNL	DATE	DESCRIPTION	BY	VE

couchperrywilkes
engineering change

Birmingham

1 4400 121 709 6600

Nottingham

1 4400 115 824 3348

Huddersfield

1 4400 148 045 7468

Leeds

1 4400 112 241 0703

Bristol

1 4400 112 215 2207

Leicester

1 4400 116 255 7307

London

1 4400 203 874 4790

Manchester

1 4400 161 974 7536

RBA STAGE

STAGE 4

STATUS

SUITABLE FOR STAGE APPROVAL

CLIENT

THE HILLINGDON HOSPITALS NHS - FOUNDATION TRUST

PROJECT

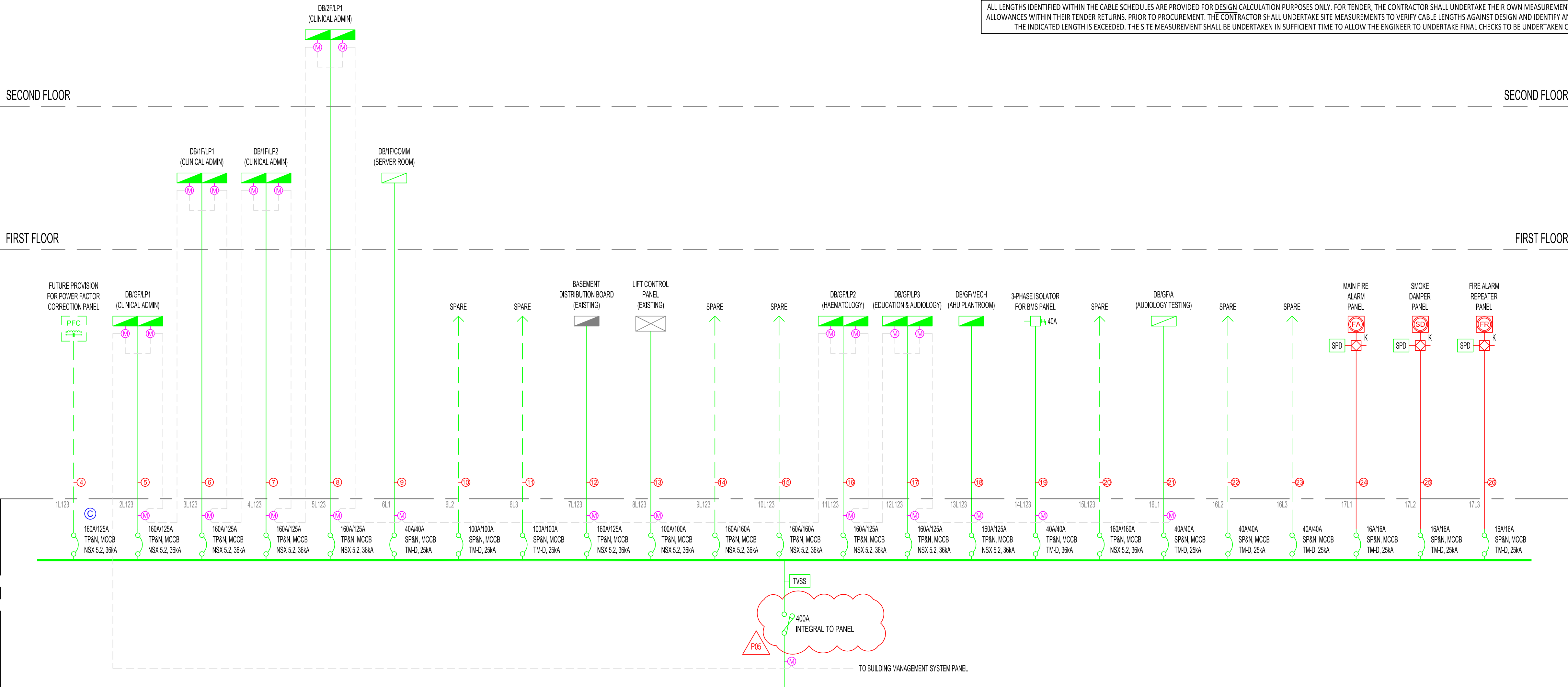
HILLINGDON HOSPITAL - THE FURZE

DRAWING TITLE

LOW VOLTAGE DISTRIBUTION SCHEMATIC

SCALE(S)	DATE	BY	VE
N.T.S	SEP'21	ZO	NR
Proj D	Operator	Volume	Level
201056	CPW	ZZ	ZZ
	Type	Risk	Number
	DR	E	01001
	S4		
	P05		

THHFP1-CPWP-ZZ-ZZ-DR-E-01001_S4_P05
CPW Project No. CPW Project Number



MDB/GF/01 - WALL MOUNTED, FORM 3B TYPE 2, 18-WAYS MCCB PANEL WITH TOP AND BOTTOM CABLE ENTRY/EXIT. LOCATED GROUND FLOOR PROPOSED PLANTROOM (HAEMATOLOGY)

GROUND FLOOR

OPERATION	EQUIPMENT	INTERLOCKING	
NORMAL SUPPLY	MAIN INCOMING SUPPLY	(A)	CLOSE
	STANDBY GENSET	(B)	OPEN
	POWER FACTOR PANEL	(C)	CLOSE
EMERGENCY SUPPLY	MAIN INCOMING SUPPLY	(A)	OPEN
	STANDBY GENSET	(B)	CLOSE
	POWER FACTOR PANEL	(C)	OPEN



Standards hazards and risks may not necessarily be identified on this drawing. The caution symbols that are identified, but not limited to, related to specific hazards and risks associated with this type of project.

Reference should be made to the DRA for further details.

DRA Ref No.	Description
1	closest Description

<O>	<Insert Description>
	It is assumed that all works shall be undertaken by a competent contractor working, where appropriate, to an approved method statement.

1. THIS DRAWING SHALL BE READ IN CONJUNCTION WITH THE CPW SPECIFICATION AND ALL OTHER RELEVANT ARCHITECTURAL AND

- ARE IN MM UNLESS OTHERWISE STATED. ALL SETTING-OUT SHALL
BE TAKEN FROM THE ARCHITECTS DRAWINGS.

CABLE SCHEDULE			
CABLE	CABLE	CROSS SECTIONAL AREA	CABLE SIZE

4	6451B	OVER 35mm ² UP TO 50mm ²	16
---	-------	--	----



RIBA Stage

Status

Client

THE GREENSBORO HOUSING AND FOUNDATION TRUST

Proj ID	Originator	Functional	Spells	Form	Discipline	Number	Subsidiary	Revisor
---------	------------	------------	--------	------	------------	--------	------------	---------

CPW Project No. 20090