

LEGEND

- DISTRIBUTION BOARD
- SUBMAIN CABLE TRAY
- LIGHTING & POWER (L&P) CABLE TRUNKING
- DATA BASKET
- FIRE ALARM TRAY

GENERAL NOTES

- THIS DRAWING IS NOT AN INSTALLATION DRAWING.
- SCALED DIMENSIONS SHALL NOT BE TAKEN FROM THIS DRAWING.
- THIS DRAWING SHALL BE READ IN CONJUNCTION WITH ALL RELEVANT REPORTS, SPECIFICATIONS, ARCHITECTURAL AND ENGINEERING DRAWINGS.
- THIS DRAWING SHALL BE PRINTED AND READ IN COLOUR ONLY.

ELECTRICAL NOTES

- THE CONTRACTOR SHALL BE DEEMED TO HAVE INCLUDED FOR ALL ITEMS OF EQUIPMENT INCLUDING MANUFACTURER AND TYPE AS DETAILED ON THIS DRAWING AND WITHIN THE SPECIFICATION.
- THE CONTRACTOR SHALL BE RESPONSIBLE FOR THE CORRECT AND FINAL POSITIONING OF ALL OUTLETS TO MEET THE END-USERS REQUIREMENTS THIS SHALL BE CARRIED OUT IN CONJUNCTION WITH THE PROJECT ARCHITECT. FINAL SETTING OUT EQUIPMENT SHALL BE TO THE ARCHITECTS ROOM LAYOUT AND REFLECTED CEILING PLANS.
- THE CONTRACTOR SHALL CO-ORDINATE ALL ELECTRICAL SERVICES WITH MECHANICAL SERVICES AND STRUCTURE.
- THE CONTRACTOR SHALL EMPLOY A REPRESENTATIVE OF THE SYSTEM MANUFACTURER TO TEST AND COMMISSION EACH SYSTEM UPON COMPLETION OF EACH PHASE OF WORKS.

CONTAINMENT NOTES

- ALL FINAL SECONDARY CONTAINMENT ROUTES SUCH AS CONDUITS AND MINI TRUNKING HAVE NOT BEEN SHOWN ON THIS DRAWING AND SHALL BE COORDINATED BY THE ELECTRICAL CONTRACTOR.
- NOTE THAT IN THE LISTED BUILDING THE CONTAINMENT ROUTES ON THIS DRAWING ARE SUBJECT TO CHANGE FOLLOWING ANY OPENING UP WORKS. IN GENERAL ALL NEW CONTAINMENT SHALL FOLLOW THE EXISTING ROUTES (BELOW FLOORS) AS OBTAINED BY THE ELECTRICAL CONTRACTOR.
- EXISTING BOXING ROUTES SHALL BE MAINTAINED FOR ANY RISE/DROP TO HIGH/LOW LEVEL.

P08	APR 24	FINAL STAGE 4 ISSUE	AT	RAI
P07	MAY 24	PRELIMINARY TENDER ISSUE	LD	RAI
P06	JAN 24	UPDATED TO INCORPORATE ARCHITECT COMMENTS	RG	RAI
P05	DEC 23	UPDATED FOR LAYOUT CHANGE	LD	RAI
P04	MAY 22	FOR TENDER	JG	NR
P03	APR 22	FOR PLANNING AMENDMENTS	JG	NR
P02	DEC 21	SUITABLE FOR STAGE APPROVAL	BP	JG
P01	OCT 21	CHANGED TO TITLE BLOCK REVISIONS	ZD	NR
T02	SEP 21	TENDER ISSUE	JG	NR
T01	SEP 21	TENDER ISSUE	JG	NR
R01	DATE	DESCRIPTION	BP	VE

couchperrywilkes[®]
engineering change

Birmingham

+44(0) 121 708 6603

Nottingham

+44(0) 115 524 3343

Huddersfield

+44(0) 148 345 7403

Leeds

+44(0) 113 247 0709

Bristol

+44(0) 117 235 5001

Leicester

+44(0) 115 225 7397

London

+44(0) 203 878 4709

Manchester

+44(0) 161 574 7535

RIBA STAGE

STAGE 4

STATUS

SUITABLE FOR STAGE APPROVAL

CLIENT
THE HILLINGDON HOSPITALS NHS - FOUNDATION TRUST

PROJECT
HILLINGDON HOSPITAL - THE FURZE

DRAWING TITLE
ELECTRICAL SERVICES
GROUND FLOOR - CLINICAL ADMIN
DISTRIBUTION LAYOUT

SCALE (A1) DATE BY VE
1:50 SEP' 21 JG NR

THHFP1-CPW-ZZ-00-DR-E-11001_S4_P08

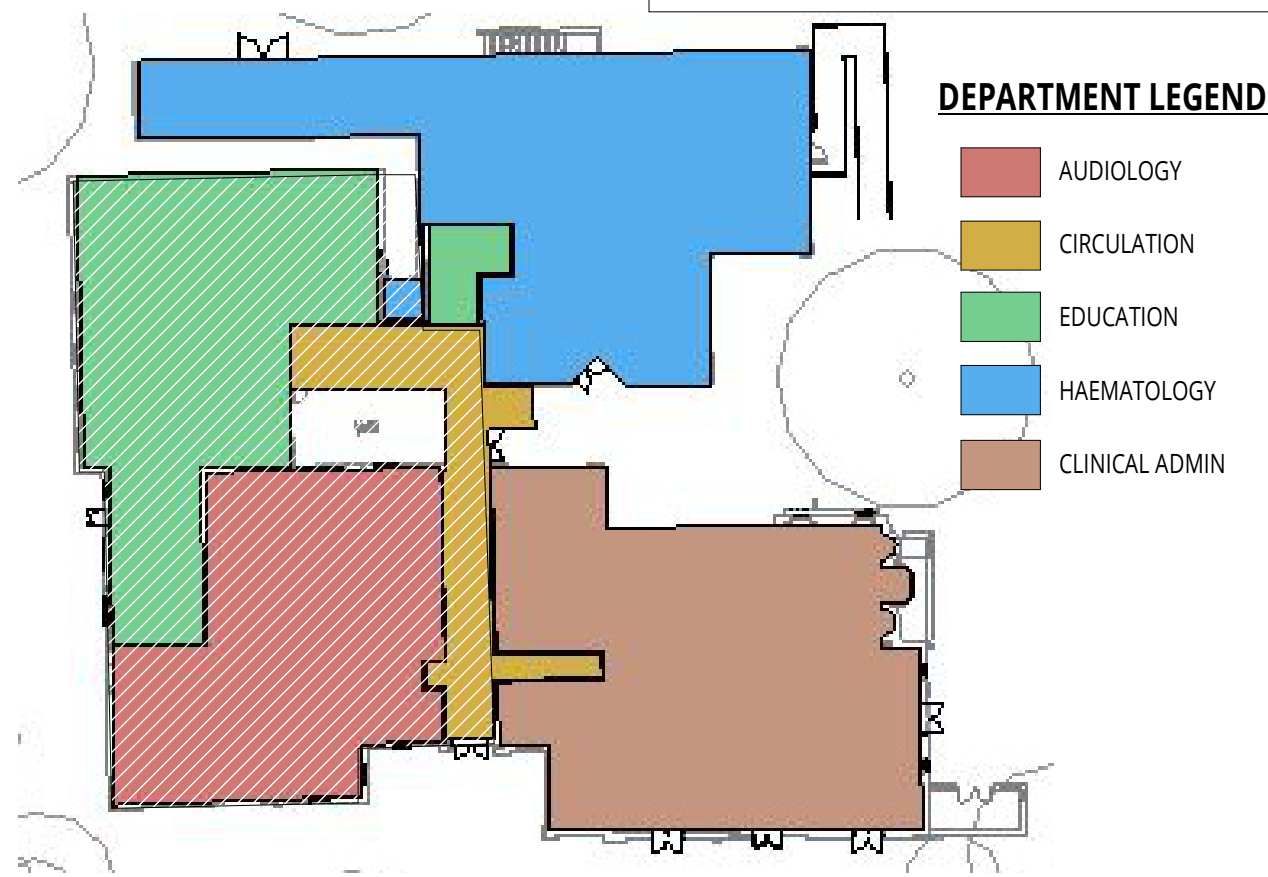
THHFP1-CPW-ZZ-00-DR-E-11001_S4_P08

THHFP1-CPW-ZZ-00-DR-E-11001_S4_P08

THHFP1-CPW-ZZ-00-DR-E-11001_S4_P08

THHFP1-CPW-ZZ-00-DR-E-11001_S4_P08

THHFP1-CPW-ZZ-00-DR-E-11001_S4_P08



GENERAL NOTES

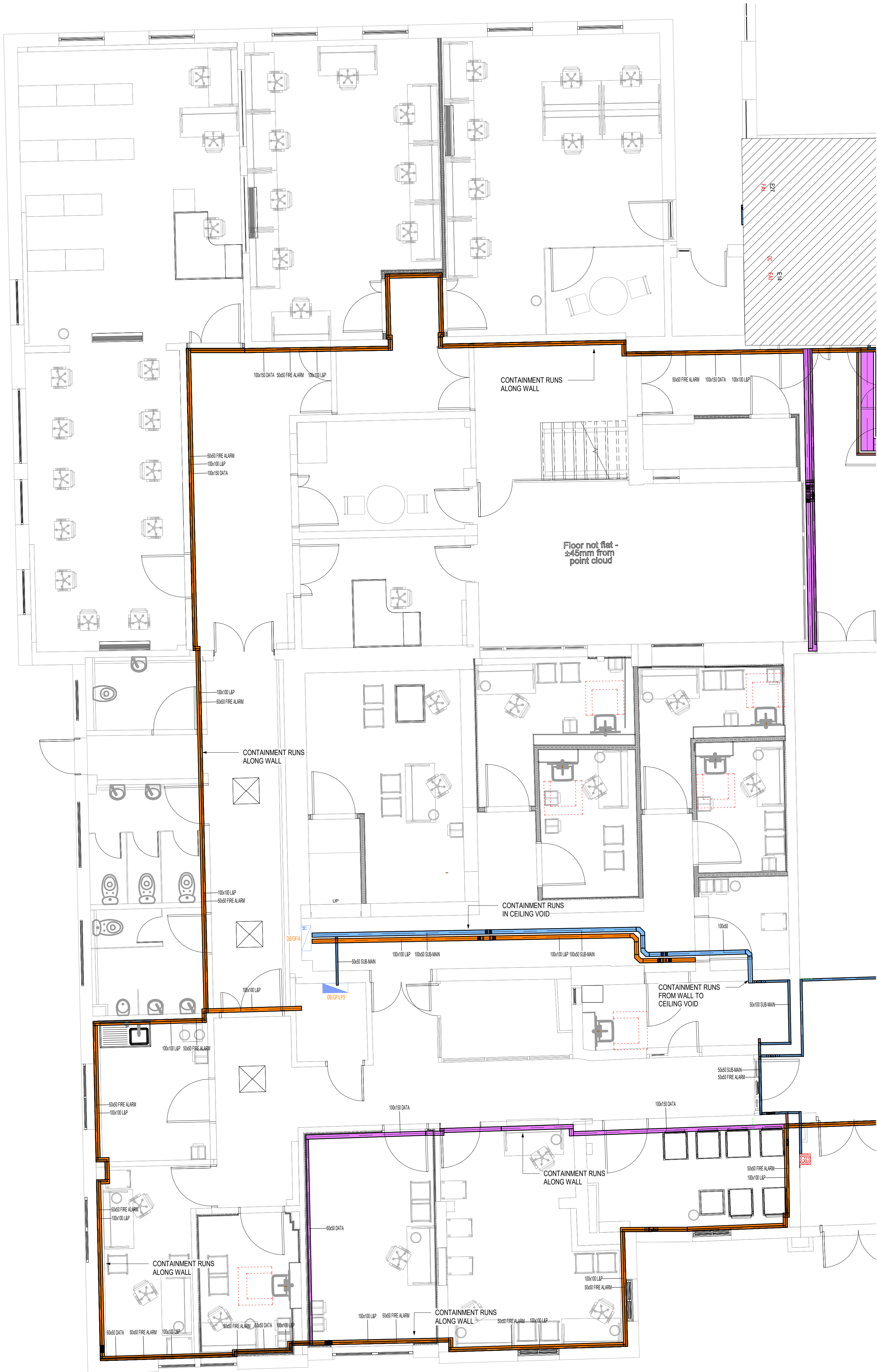
- THIS DRAWING IS NOT AN INSTALLATION DRAWING.
- SCALED DIMENSIONS SHALL NOT BE TAKEN FROM THIS DRAWING.
- THIS DRAWING SHALL BE READ IN CONJUNCTION WITH ALL RELEVANT REPORTS, SPECIFICATIONS, ARCHITECTURAL AND ENGINEERING DRAWINGS.
- THIS DRAWING SHALL BE PRINTED AND READ IN COLOUR ONLY.

ELECTRICAL NOTES

- THE CONTRACTOR SHALL BE DEEMED TO HAVE INCLUDED FOR ALL ITEMS OF EQUIPMENT INCLUDING MANUFACTURER AND TYPE AS DETAILED ON THIS DRAWING AND WITHIN THE SPECIFICATION.
- THE CONTRACTOR SHALL BE RESPONSIBLE FOR THE CORRECT AND FINAL POSITIONING OF ALL OUTLETS TO MEET THE END-USERS REQUIREMENTS THIS SHALL BE CARRIED OUT IN CONJUNCTION WITH THE PROJECT ARCHITECT. FINAL SETTING OUT EQUIPMENT SHALL BE TO THE ARCHITECTS ROOM LAYOUT AND REFLECTED CEILING PLANS.
- THE CONTRACTOR SHALL CO-ORDINATE ALL ELECTRICAL SERVICES WITH MECHANICAL SERVICES AND STRUCTURE.
- THE CONTRACTOR SHALL EMPLOY A REPRESENTATIVE OF THE SYSTEM MANUFACTURER TO TEST AND COMMISSION EACH SYSTEM UPON COMPLETION OF EACH PHASE OF WORKS.

CONTAINMENT NOTES

- ALL FINAL SECONDARY CONTAINMENT ROUTES SUCH AS CONDUITS AND MINI TRUNKING HAVE NOT BEEN SHOWN ON THIS DRAWING AND SHALL BE COORDINATED BY THE ELECTRICAL CONTRACTOR.
- NOTE THAT IN THE LISTED BUILDING THE CONTAINMENT ROUTES ON THIS DRAWING ARE SUBJECT TO CHANGE FOLLOWING ANY OPENING UP WORKS. IN GENERAL ALL NEW CONTAINMENT SHALL FOLLOW THE EXISTING ROUTES (BELOW FLOORS) AS OBTAINED BY THE ELCTRICAL CONTRACTOR.
- EXISTING BOXING ROUTES SHALL BE MAINTAINED FOR ANY RISE/DROP TO HIGH/LOW LEVEL.



LEGEND

- DISTRIBUTION BOARD
- SUBMAIN CABLE TRAY
- LIGHTING & POWER (L&P) CABLE TRUNKING
- DATA BASKET
- FIRE ALARM TRAY

PIB	APR 24	FINAL STAGE 4 ISSUE	AT	RAI
PIF	MAR 24	PRELIMINARY TENDER ISSUE	LD	RAI
PIB	JAN 24	UPDATED TO INCORPORATE ARCHITECT COMMENTS	RB	RAI
PIB	DEC 23	UPDATED FOR LAYOUT CHANGE	LD	RAI
PIA	MAY 22	FOR TENDER	JG	NR
PIB	APR 22	FOR PLANNING AMENDMENTS	JG	NR
PIB	DEC 21	SUITABLE FOR STAGE APPROVAL	BP	JP
PII	OCT 21	CHANGES TO TITLE BLOCK REVISIONS	JD	NR
TIC	SEP 21	TENDER ISSUE	JG	NR
T01	SEP 21	TENDER ISSUE	JG	NR
REV	DATE	DESCRIPTION	BY	VE

couchperrywilkes
engineering change

Birmingham	+44(0) 121 788 8800	X
Nottingham	+44(0) 115 524 3345	
Huddersfield	+44(0) 148 545 7460	
Leeds	+44(0) 113 347 0700	
Sheffield	+44(0) 114 255 5501	
London	+44(0) 1753 355 7307	
London	+44(0) 203 073 4700	
Manchester	+44(0) 161 574 7526	

STAGE 4

SUITABLE FOR STAGE APPROVAL

CLIENT
THE HILLINGDON HOSPITALS NHS - FOUNDATION TRUST

PROJECT
HILLINGDON HOSPITAL - THE FURZE

DRAWING TITLE
ELECTRICAL SERVICES
GROUND FLOOR - EDUCATION & AUDIOLOGY
DISTRIBUTION LAYOUT

SCALE (A1)
1:50

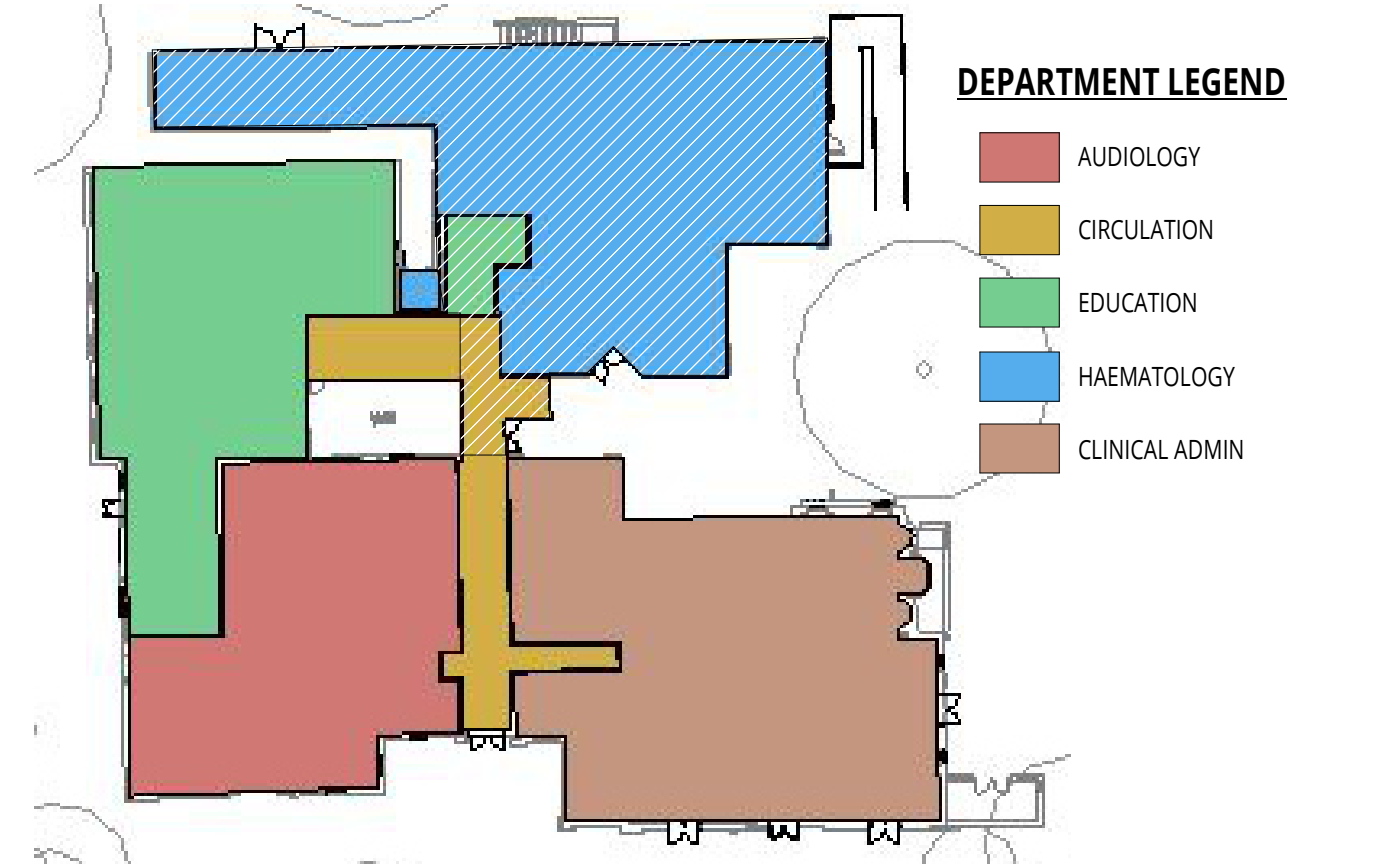
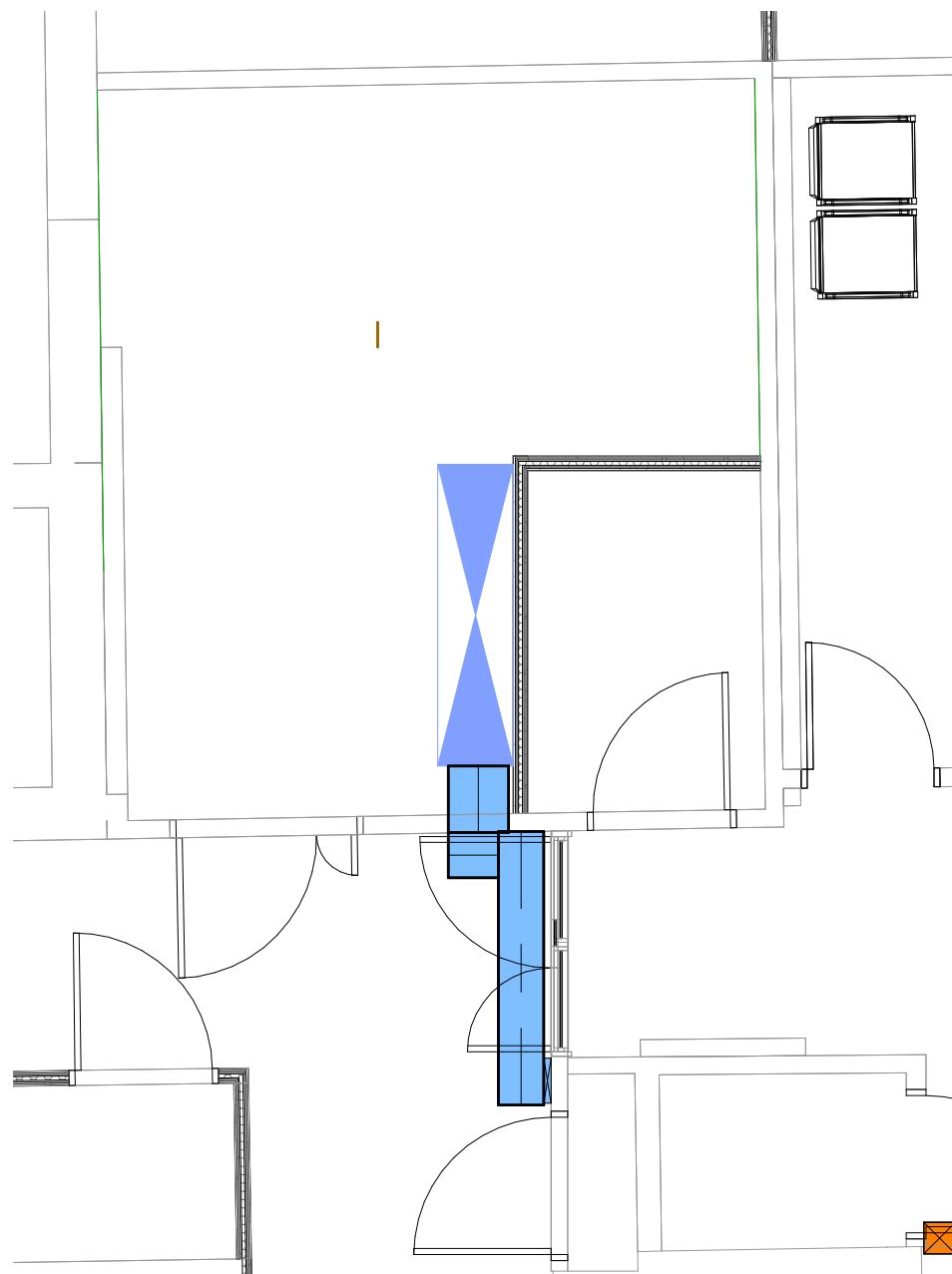
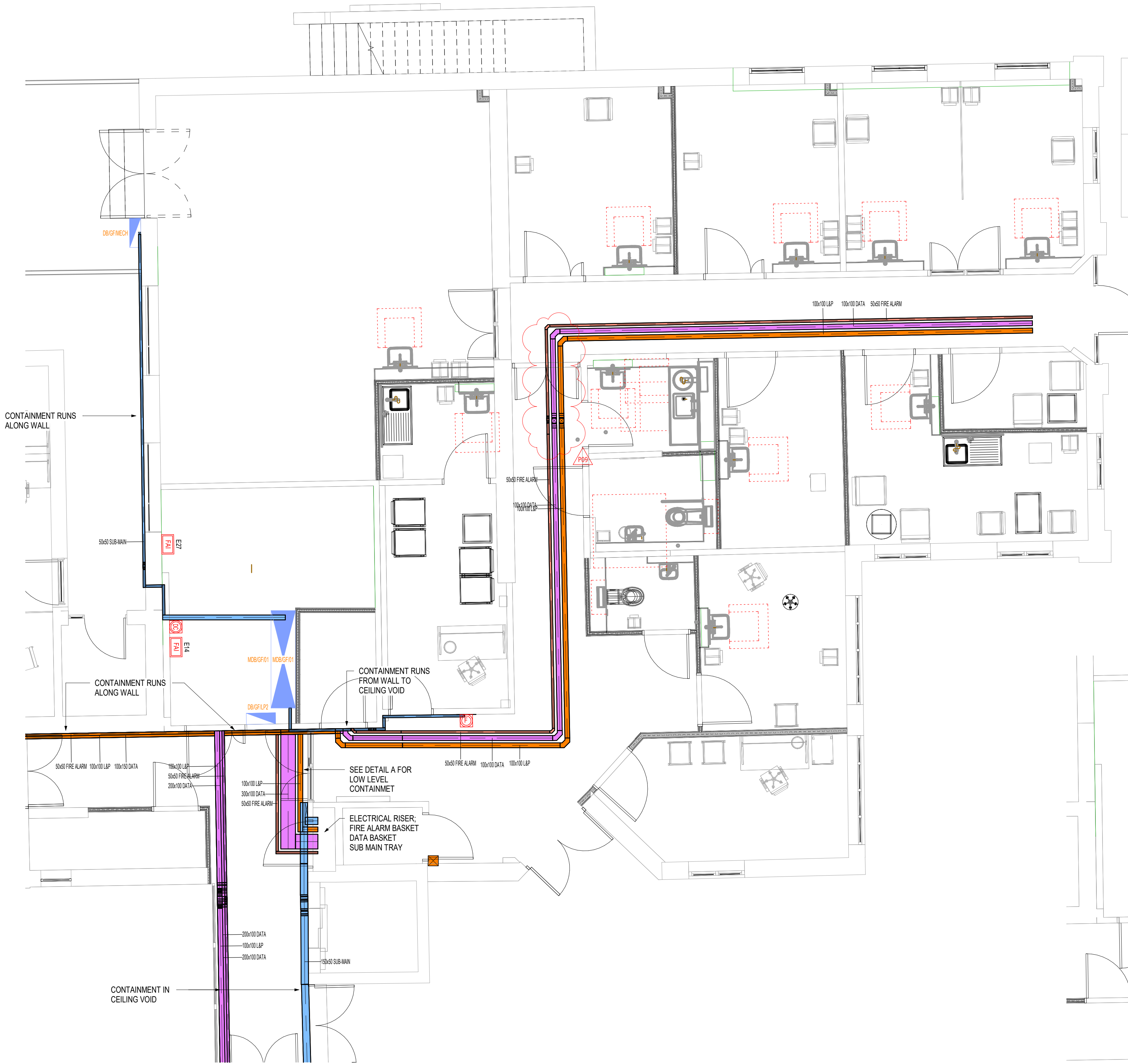
DATE
SEP '21

BY
JG

VE
NR

THHFP1-CPW-ZZ-00-DR-E-11002_S4_P08

THHFP1-CRH-ZZ-ZZ-M3-S-0001



LEGEND

- DISTRIBUTION BOARD
- SUBMAIN CABLE TRAY
- LIGHTING & POWER (L&P) CABLE TRUNKING
- DATA BASKET
- FIRE ALARM TRAY

GENERAL NOTES

- THIS DRAWING IS NOT AN INSTALLATION DRAWING.
- SCALED DIMENSIONS SHALL NOT BE TAKEN FROM THIS DRAWING.
- THIS DRAWING SHALL BE READ IN CONJUNCTION WITH ALL RELEVANT REPORTS, SPECIFICATIONS, ARCHITECTURAL AND ENGINEERING DRAWINGS.
- THIS DRAWING SHALL BE PRINTED AND READ IN COLOUR ONLY.

ELECTRICAL NOTES

- THE CONTRACTOR SHALL BE DEEMED TO HAVE INCLUDED FOR ALL ITEMS OF EQUIPMENT INCLUDING MANUFACTURER AND TYPE AS DETAILED ON THIS DRAWING AND WITHIN THE SPECIFICATION.
- THE CONTRACTOR SHALL BE RESPONSIBLE FOR THE CORRECT AND FINAL POSITIONING OF ALL OUTLETS TO MEET THE END-USERS REQUIREMENTS THIS SHALL BE CARRIED OUT IN CONJUNCTION WITH THE PROJECT ARCHITECT. FINAL SETTING OUT EQUIPMENT SHALL BE TO THE ARCHITECTS ROOM LAYOUT AND REFLECTED CEILING PLANS.
- THE CONTRACTOR SHALL CO-ORDINATE ALL ELECTRICAL SERVICES WITH MECHANICAL SERVICES AND STRUCTURE.
- THE CONTRACTOR SHALL EMPLOY A REPRESENTATIVE OF THE SYSTEM MANUFACTURER TO TEST AND COMMISSION EACH SYSTEM UPON COMPLETION OF EACH PHASE OF WORKS.

CONTAINMENT NOTES

- ALL FINAL SECONDARY CONTAINMENT ROUTES SUCH AS CONDUITS AND MINI TRUNKINGS HAVE NOT BEEN SHOWN ON THIS DRAWING AND SHALL BE COORDINATED BY THE ELECTRICAL CONTRACTOR.
- NOTE THAT IN THE LISTED BUILDING THE CONTAINMENT ROUTES ON THIS DRAWING ARE SUBJECT TO CHANGE FOLLOWING ANY OPENING UP WORKS. IN GENERAL ALL NEW CONTAINMENT SHALL FOLLOW THE EXISTING ROUTES (BELOW FLOORS) AS OBTAINED BY THE ELCTRICAL CONTRACTOR.
- EXISTING BOXING ROUTES SHALL BE MAINTAINED FOR ANY RISE/DROP TO HIGH/LOW LEVEL.

REV	DATE	DESCRIPTION	BY	VE
P01	JUN 24	UPDATED FOLLOWING BIMV CO-ORDINATION WITH ARCHITECTS	RK	RM
P02	APR 24	FINAL STAGE 4 ISSUE	AT	RM
P03	MAY 24	PRELIMINARY TENDER ISSUE	LD	RM
P04	JAN 24	UPDATED TO INCORPORATE ARCHITECT COMMENTS	RG	RM
P05	DEC 23	UPDATED FOR LAYOUT CHANGE	LD	RM
P06	MAY 22	FOR TENDER	JG	NR
P07	APR 22	FOR PLANNING AMENDMENTS	JG	NR
P08	DEC 21	SUITABLE FOR STAGE APPROVAL	BP	JP
P09	OCT 21	CHANGED TO TITLE BLOCK REVISIONS	ZD	NR
T01	SEP 21	TENDER ISSUE	JG	NR
T02	SEP 21	TENDER ISSUE	JG	NR
T03	SEP 21	TENDER ISSUE	JP	VE

couchperrywilkes
engineering change

Birmingham | +44(0) 121 708 6603
Nottingham | +44(0) 115 524 3348
Huddersfield | +44(0) 148 345 7483
Leeds | +44(0) 113 247 0703
Bristol | +44(0) 117 335 5001
Leicester | +44(0) 115 225 7397
London | +44(0) 203 878 4709
Manchester | +44(0) 161 574 7535

RIBA STAGE

STAGE 4

STATUS

SUITABLE FOR STAGE APPROVAL

CLIENT

THE HILLINGDON HOSPITALS NHS - FOUNDATION TRUST

PROJECT

HILLINGDON HOSPITAL - THE FURZE

DRAWING TITLE

ELECTRICAL SERVICES
GROUND FLOOR - HAEMATOLGY
DISTRIBUTION LAYOUT

SCALE (A1)	DATE	BY	VE
1:50	SEP' 21	JG	NR

Proj ID	Originator	Volume	Level	Type	Role	Number	Suitability	Revision
THHFP1	CPW	ZZ	00	DR	E	11003	S4	P09

THHFP1-CPW-ZZ-00-DR-E-11003_S4_P09

CPW Project No. 240208

LINKED FILES

-HTF-LDW-XX-ZZ-M3-A-0001

THHFP1-CRH-ZZ-ZZ-M3-S-0001

DEPARTMENT LEGEND

- AUDIOLOGY
- CIRCULATION
- EDUCATION
- HAEMATOLOGY
- CLINICAL ADMIN



LEGEND

- DISTRIBUTION BOARD
- SUBMAIN CABLE TRAY
- LIGHTING & POWER (L&P) CABLE TRUNKING
- DATA BASKET
- FIRE ALARM TRAY

GENERAL NOTES

- THIS DRAWING IS NOT AN INSTALLATION DRAWING.
- SCALED DIMENSIONS SHALL NOT BE TAKEN FROM THIS DRAWING.
- THIS DRAWING SHALL BE READ IN CONJUNCTION WITH ALL RELEVANT REPORTS, SPECIFICATIONS, ARCHITECTURAL AND ENGINEERING DRAWINGS.
- THIS DRAWING SHALL BE PRINTED AND READ IN COLOUR ONLY.

ELECTRICAL NOTES

- THE CONTRACTOR SHALL BE DEEMED TO HAVE INCLUDED FOR ALL ITEMS OF EQUIPMENT INCLUDING MANUFACTURER AND TYPE AS DETAILED ON THIS DRAWING AND WITHIN THE SPECIFICATION.
- THE CONTRACTOR SHALL BE RESPONSIBLE FOR THE CORRECT AND FINAL POSITIONING OF ALL OUTLETS TO MEET THE END-USERS REQUIREMENTS THIS SHALL BE CARRIED OUT IN CONJUNCTION WITH THE PROJECT ARCHITECT. FINAL SETTING OUT EQUIPMENT SHALL BE TO THE ARCHITECTS ROOM LAYOUT AND REFLECTED CEILING PLANS.
- THE CONTRACTOR SHALL CO-ORDINATE ALL ELECTRICAL SERVICES WITH MECHANICAL SERVICES AND STRUCTURE.
- THE CONTRACTOR SHALL EMPLOY A REPRESENTATIVE OF THE SYSTEM MANUFACTURER TO TEST AND COMMISSION EACH SYSTEM UPON COMPLETION OF EACH PHASE OF WORKS.

CONTAINMENT NOTES

- ALL FINAL SECONDARY CONTAINMENT ROUTES SUCH AS CONDUITS AND MINI TRUNKING HAVE NOT BEEN SHOWN ON THIS DRAWING AND SHALL BE COORDINATED BY THE ELECTRICAL CONTRACTOR.
- NOTE THAT IN THE LISTED BUILDING THE CONTAINMENT ROUTES ON THIS DRAWING ARE SUBJECT TO CHANGE FOLLOWING ANY OPENING UP WORKS. IN GENERAL ALL NEW CONTAINMENT SHALL FOLLOW THE EXISTING ROUTES (BELOW FLOORS) AS OBTAINED BY THE ELCTRICAL CONTRACTOR.
- EXISTING BOXING ROUTES SHALL BE MAINTAINED FOR ANY RISE/DROP TO HIGH/LOW LEVEL.

P08	APR 24	FINAL STAGE 4 ISSUE	AT	RAI
P07	APR 24	PRELIMINARY TENDER ISSUE	AI	RAI
P06	JAN 20	UPDATED TO INCORPORATE ARCHITECT COMMENTS	RE	RAI
P05	DEC 19	UPDATED FOR LAYOUT CHANGE	LD	RAI
P04	MAY 22	FOR TENDER	JG	NR
P03	APR 22	FOR PLANNING AMENDMENTS	JG	NR
P02	DEC 21	SUITABLE FOR STAGE APPROVAL	BP	JP
P01	OCT 21	CHANGED TO TITLE BLOCK REVISIONS	ZD	NR
T02	SEP 21	TENDER ISSUE	JG	NR
T01	SEP 21	TENDER ISSUE	JG	NR
R01	DATE	DESCRIPTION	BP	VE

couchperrywilkes®
engineering change

Birmingham	I +44(0) 121 708 6603	
Nottingham	I +44(0) 115 924 3348	
Huddersfield	I +44(0) 148 345 7483	
Leeds	I +44(0) 193 247 0739	
Bristol	I +44(0) 117 235 5011	
Leicester	I +44(0) 115 225 7397	
London	I +44(0) 203 878 4759	
Manchester	I +44(0) 161 574 7538	

RIBA STAGE

STAGE 4

STATUS

SUITABLE FOR STAGE APPROVAL

CLIENT

THE HILLINGDON HOSPITALS NHS - FOUNDATION TRUST

PROJECT

HILLINGDON HOSPITAL - THE FURZE

DRAWING TITLE

ELECTRICAL SERVICES
FIRST FLOOR - CLINICAL ADMIN
DISTRIBUTION LAYOUT

SCALE (A1)

1:50

DATE

SEP' 21

BY

JG

VE

NR

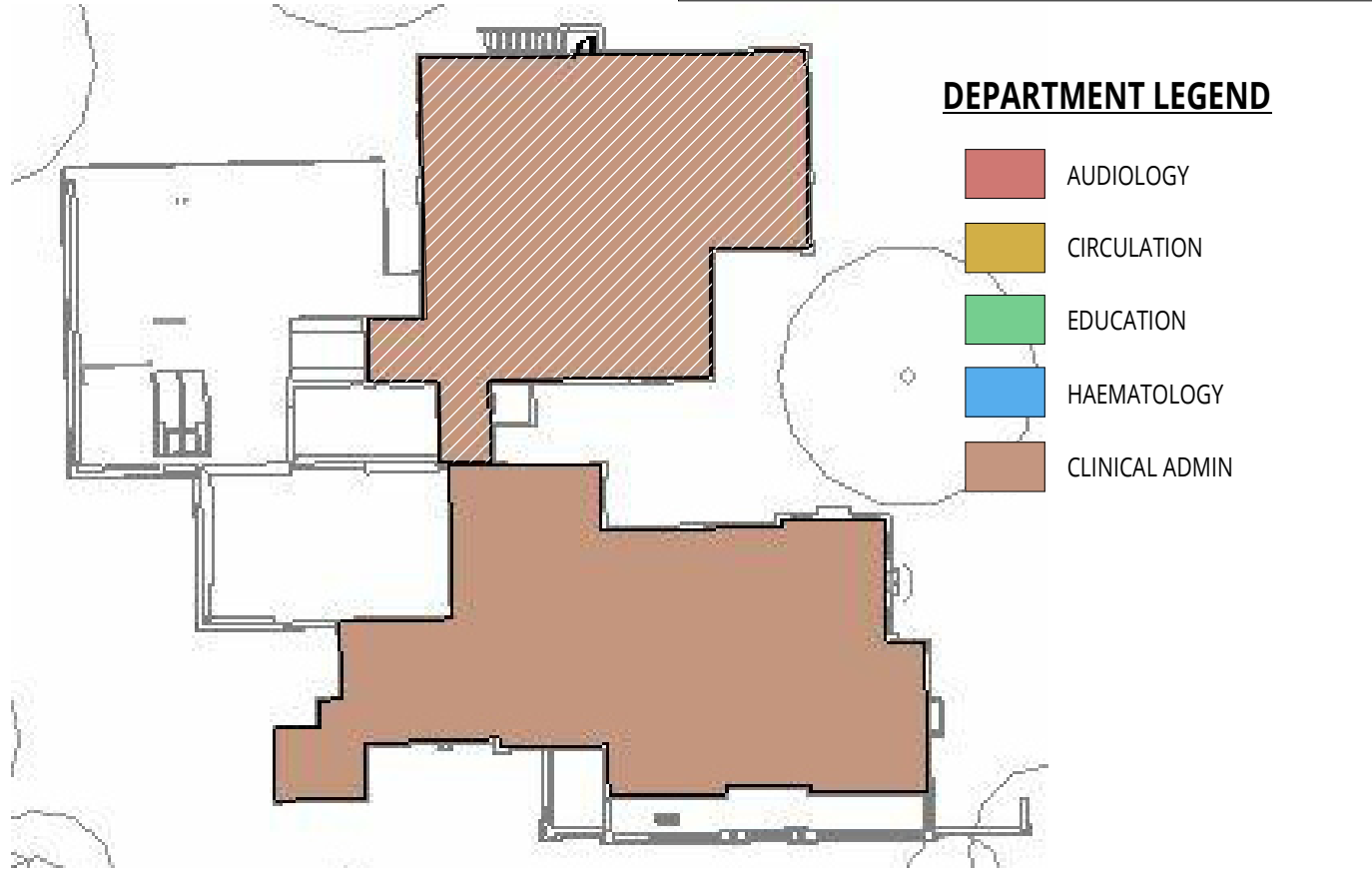
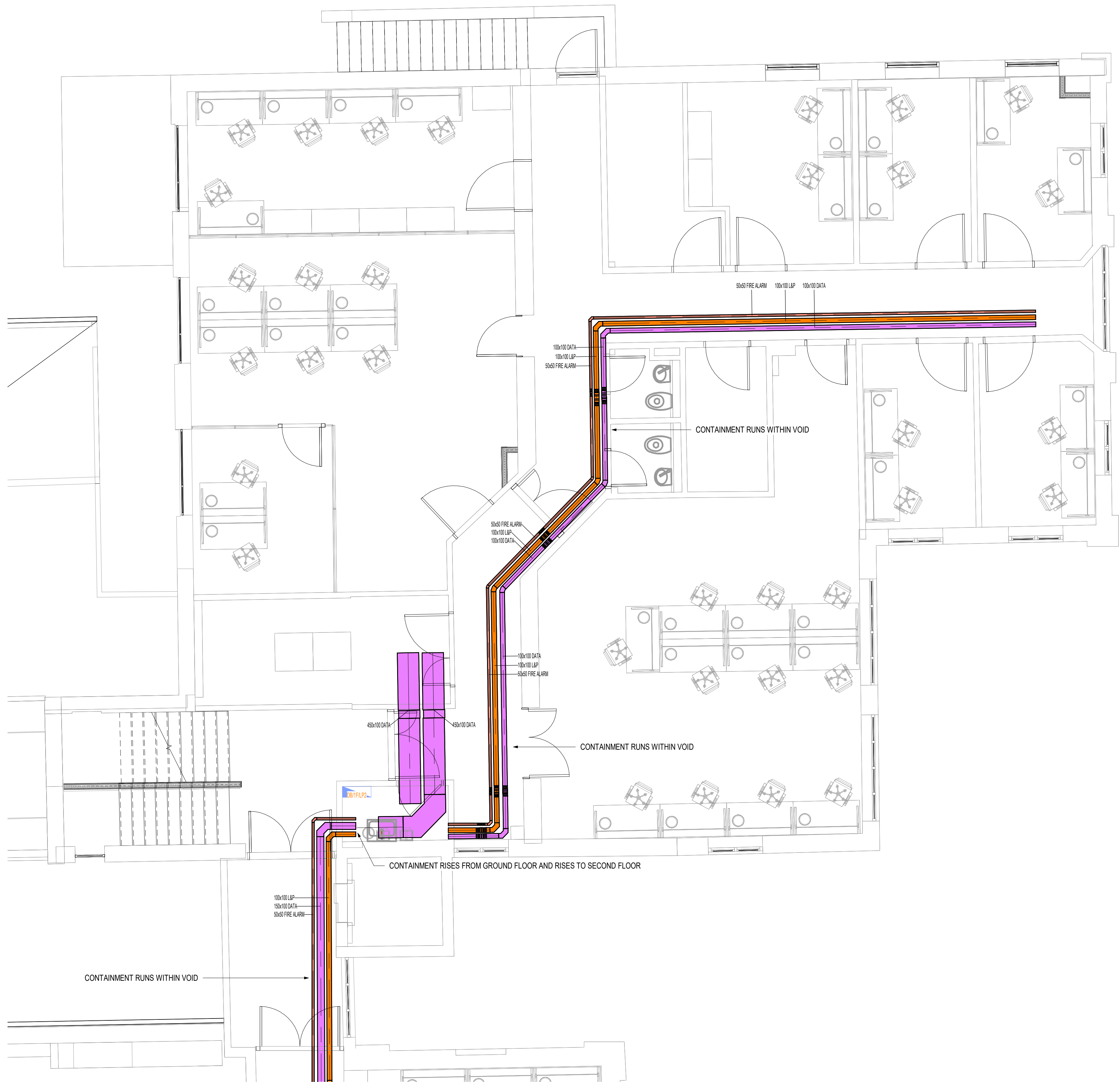
NO	CHG	NO	DATE	BY	VE	NO	DATE	BY	VE
THHFP1	CPW	22	01	DR	E	11001	S4	NR	P08

THHFP1-CPW-ZZ-01-DR-E-11001_S4_P08

CPW Project No. 240208

LINKED FILES

-HTF-LDW-XX-ZZ-M3-A-0001
THHFP1-CRH-ZZ-ZZ-M3-S-0001



LEGEND

- DISTRIBUTION BOARD
- SUBMAIN CABLE TRAY
- LIGHTING & POWER (L&P) CABLE TRUNKING
- DATA BASKET
- FIRE ALARM TRAY

GENERAL NOTES

- THIS DRAWING IS NOT AN INSTALLATION DRAWING.
- SCALED DIMENSIONS SHALL NOT BE TAKEN FROM THIS DRAWING.
- THIS DRAWING SHALL BE READ IN CONJUNCTION WITH ALL RELEVANT REPORTS, SPECIFICATIONS, ARCHITECTURAL AND ENGINEERING DRAWINGS.
- THIS DRAWING SHALL BE PRINTED AND READ IN COLOUR ONLY.

ELECTRICAL NOTES

- THE CONTRACTOR SHALL BE DEEMED TO HAVE INCLUDED FOR ALL ITEMS OF EQUIPMENT INCLUDING MANUFACTURER AND TYPE AS DETAILED ON THIS DRAWING AND WITHIN THE SPECIFICATION.
- THE CONTRACTOR SHALL BE RESPONSIBLE FOR THE CORRECT AND FINAL POSITIONING OF ALL OUTLETS TO MEET THE END-USERS REQUIREMENTS THIS SHALL BE CARRIED OUT IN CONJUNCTION WITH THE PROJECT ARCHITECT. FINAL SETTING OUT EQUIPMENT SHALL BE TO THE ARCHITECTS ROOM LAYOUT AND REFLECTED CEILING PLANS.
- THE CONTRACTOR SHALL CO-ORDINATE ALL ELECTRICAL SERVICES WITH MECHANICAL SERVICES AND STRUCTURE.
- THE CONTRACTOR SHALL EMPLOY A REPRESENTATIVE OF THE SYSTEM MANUFACTURER TO TEST AND COMMISSION EACH SYSTEM UPON COMPLETION OF EACH PHASE OF WORKS.

CONTAINMENT NOTES

- ALL FINAL SECONDARY CONTAINMENT ROUTES SUCH AS CONDUITS AND MINI TRUNKING HAVE NOT BEEN SHOWN ON THIS DRAWING AND SHALL BE COORDINATED BY THE ELECTRICAL CONTRACTOR.
- NOTE THAT IN THE LISTED BUILDING THE CONTAINMENT ROUTES ON THIS DRAWING ARE SUBJECT TO CHANGE FOLLOWING ANY OPENING UP WORKS. IN GENERAL ALL NEW CONTAINMENT SHALL FOLLOW THE EXISTING ROUTES (BELOW FLOORS) AS OBTAINED BY THE ELCTRICAL CONTRACTOR.
- EXISTING BOXING ROUTES SHALL BE MAINTAINED FOR ANY RISE/DROP TO HIGH/LOW LEVEL.

P08	APR 24	FINAL STAGE 4 ISSUE	AT	RM
P07	APR 24	PRELIMINARY TENDER ISSUE	AL	RM
P06	JAN 24	UPDATED TO INCORPORATE ARCHITECT COMMENTS	RG	RM
P05	DEC23	UPDATED FOR LAYOUT CHANGE	LD	RM
P04	MAY22	FOR TENDER	JG	NR
P03	APR22	FOR PLANNING AMENDMENTS	JG	NR
P02	DEC21	SUITABLE FOR STAGE APPROVAL	BP	JP
P01	OCT 21	CHANGED TO TITLE BLOCK REVISIONS	ZD	NR
T02	SEP 21	TENDER ISSUE	JG	NR
T01	SEP 21	TENDER ISSUE	JG	NR
R01	DATE	DESCRIPTION	JP	VE

couchperrywilkes[®]
engineering change

Birmingham

1 +44(0) 121 708 6603

■

Nottingham

1 +44(0) 115 524 3343

■

Huddersfield

1 +44(0) 148 345 7483

■

Leeds

1 +44(0) 153 247 0739

■

Bristol

1 +44(0) 117 235 5001

■

Leicester

1 +44(0) 115 225 7397

■

London

1 +44(0) 203 878 4759

■

Manchester

1 +44(0) 161 574 7535

■

RIBA STAGE

STAGE 4

STATUS

SUITABLE FOR STAGE APPROVAL

CLIENT

THE HILLGONDON HOSPITALS NHS - FOUNDATION TRUST

PROJECT

HILLGONDON HOSPITAL - THE FURZE

DRAWING TITLE

ELECTRICAL SERVICES
FIRST FLOOR - CLINICAL ADMIN
DISTRIBUTION LAYOUT

SCALE (A1)

DATE

BY

VE

1:50

SEP' 21

JG

NR

THHFP1

CPW

ZZ

01

DR

E

11002

S4

P08

THHFP1-CPW-ZZ-01-DR-E-11002_S4_P08

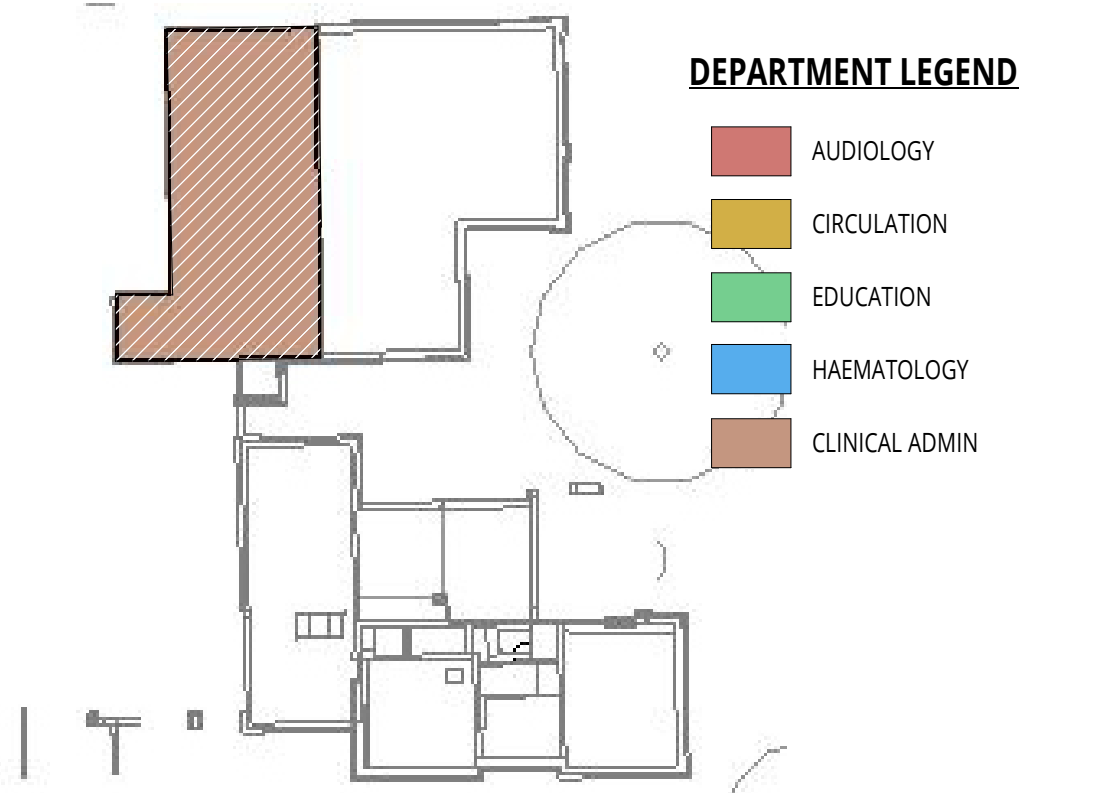
CPW Project No.

240208

LINKED FILES

-HTF-LDW-XX-ZZ-M3-A-0001

THHFP1-CRH-ZZ-ZZ-M3-S-0001



LEGEND

- DISTRIBUTION BOARD
- SUBMAIN CABLE TRAY
- LIGHTING & POWER (L&P) CABLE TRUNKING
- DATA BASKET
- FIRE ALARM TRAY

GENERAL NOTES

- THIS DRAWING IS NOT AN INSTALLATION DRAWING.
- SCALED DIMENSIONS SHALL NOT BE TAKEN FROM THIS DRAWING.
- THIS DRAWING SHALL BE READ IN CONJUNCTION WITH ALL RELEVANT REPORTS, SPECIFICATIONS, ARCHITECTURAL AND ENGINEERING DRAWINGS.
- THIS DRAWING SHALL BE PRINTED AND READ IN COLOUR ONLY.

ELECTRICAL NOTES

- THE CONTRACTOR SHALL BE DEEMED TO HAVE INCLUDED FOR ALL ITEMS OF EQUIPMENT INCLUDING MANUFACTURER AND TYPE AS DETAILED ON THIS DRAWING AND WITHIN THE SPECIFICATION.
- THE CONTRACTOR SHALL BE RESPONSIBLE FOR THE CORRECT AND FINAL POSITIONING OF ALL OUTLETS TO MEET THE END-USERS REQUIREMENTS THIS SHALL BE CARRIED OUT IN CONJUNCTION WITH THE PROJECT ARCHITECT. FINAL SETTING OUT EQUIPMENT SHALL BE TO THE ARCHITECTS ROOM LAYOUT AND REFLECTED CEILING PLANS.
- THE CONTRACTOR SHALL CO-ORDINATE ALL ELECTRICAL SERVICES WITH MECHANICAL SERVICES AND STRUCTURE.
- THE CONTRACTOR SHALL EMPLOY A REPRESENTATIVE OF THE SYSTEM MANUFACTURER TO TEST AND COMMISSION EACH SYSTEM UPON COMPLETION OF EACH PHASE OF WORKS.

CONTAINMENT NOTES

- ALL FINAL SECONDARY CONTAINMENT ROUTES SUCH AS CONDUITS AND MINI TRUNKING HAVE NOT BEEN SHOWN ON THIS DRAWING AND SHALL BE COORDINATED BY THE ELECTRICAL CONTRACTOR.
- NOTE THAT IN THE LISTED BUILDING THE CONTAINMENT ROUTES ON THIS DRAWING ARE SUBJECT TO CHANGE FOLLOWING ANY OPENING UP WORKS. IN GENERAL ALL NEW CONTAINMENT SHALL FOLLOW THE EXISTING ROUTES (BELOW FLOORS) AS OBTAINED BY THE ELCTRICAL CONTRACTOR.
- EXISTING BOXING ROUTES SHALL BE MAINTAINED FOR ANY RISE/DROP TO HIGH/LOW LEVEL.

P08	APR 24	FINAL STAGE 4 ISSUE	AT	RM
P07	MAY 24	PRELIMINARY TENDER ISSUE	LD	RM
P06	JAN 24	UPDATED TO INCORPORATE ARCHITECT COMMENTS	RG	RM
P05	DEC 23	UPDATED FOR LAYOUT CHANGE	LD	RM
P04	MAY 22	FOR TENDER	JG	NR
P03	APR 22	FOR PLANNING AMENDMENTS	JG	NR
P02	DEC 21	SUITABLE FOR STAGE APPROVAL	BP	JP
P01	OCT 21	CHANGES TO TITLE BLOCK REVISIONS	ZD	NR
T02	SEP 21	TENDER ISSUE	JG	NR
T01	SEP 21	TENDER ISSUE	JG	NR
R01	DATE	DESCRIPTION	BP	VE

couchperrywilkes[®]
engineering change

Birmingham

+44(0) 121 708 6603

Nottingham

+44(0) 115 924 3343

Huddersfield

+44(0) 148 345 7483

Leeds

+44(0) 113 247 0703

Bristol

+44(0) 117 235 5001

Leicester

+44(0) 115 225 7397

London

+44(0) 203 878 4709

Manchester

+44(0) 161 574 7535

RIBA STAGE

STAGE 4

STATUS

SUITABLE FOR STAGE APPROVAL

CLIENT

THE HILLINGDON HOSPITALS NHS - FOUNDATION TRUST

PROJECT

HILLINGDON HOSPITAL - THE FURZE

DRAWING TITLE

ELECTRICAL SERVICES
SECOND FLOOR - CLINICAL ADMIN
DISTRIBUTION LAYOUT

SCALE (A1)

1:50

DATE

SEP' 21

BY

JG

VE

NR

NO	CHG	DATE	BY	VE	NO	CHG	DATE	BY	VE
THHFP1	CPW	22	02	DR	E	11001	S4	NR	

THHFP1-CPW-ZZ-02-DR-E-11001_S4_P08

LINKED FILES

-HTF-LDW-XX-ZZ-M3-A-0001

THHFP1-CRH-ZZ-ZZ-M3-S-0001

