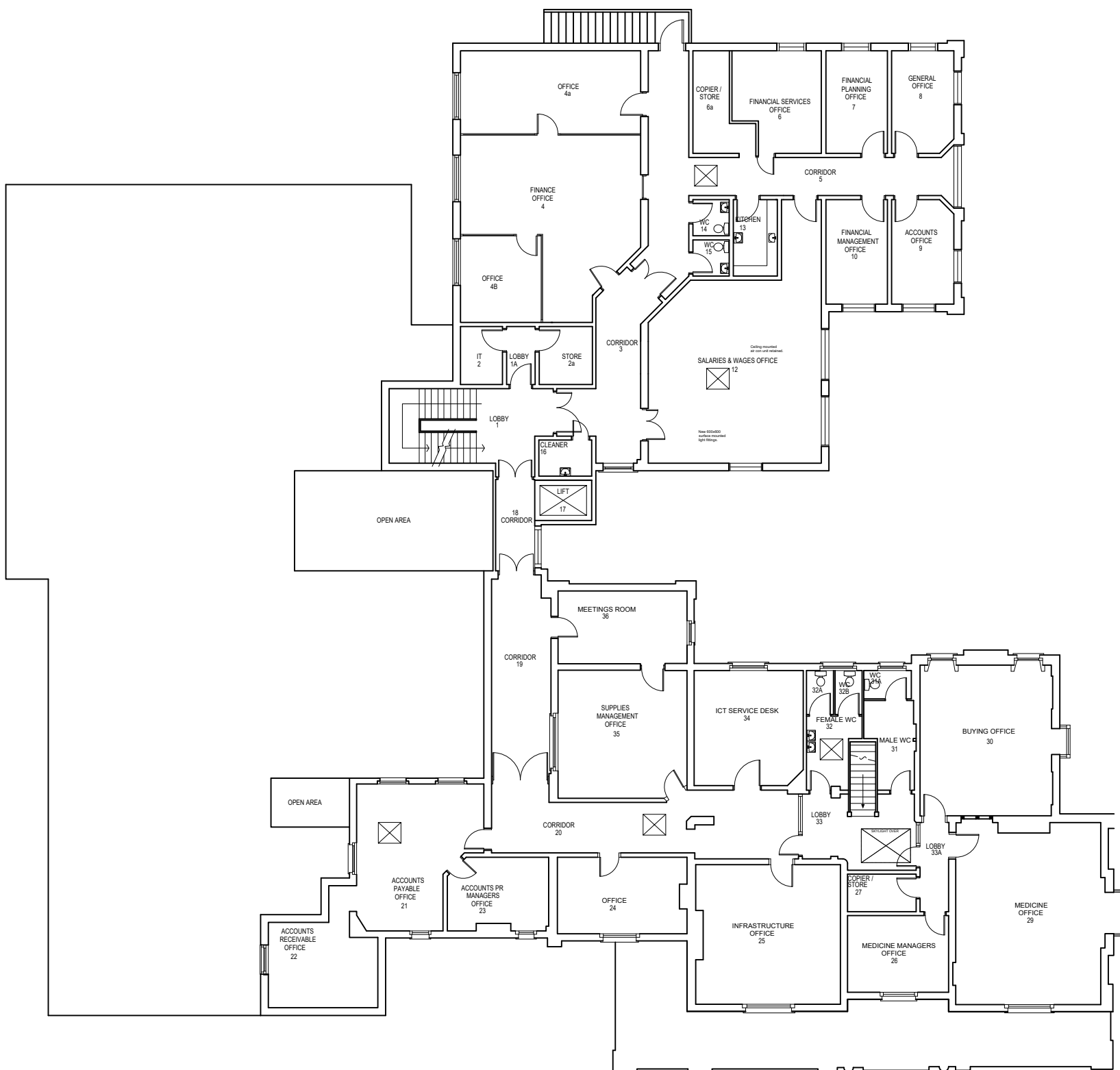
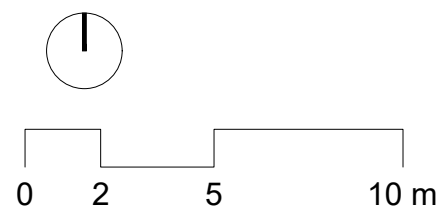
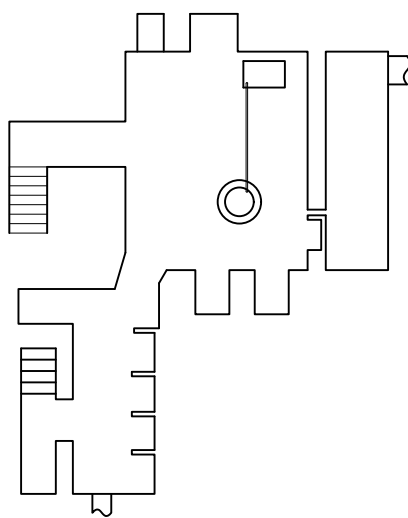




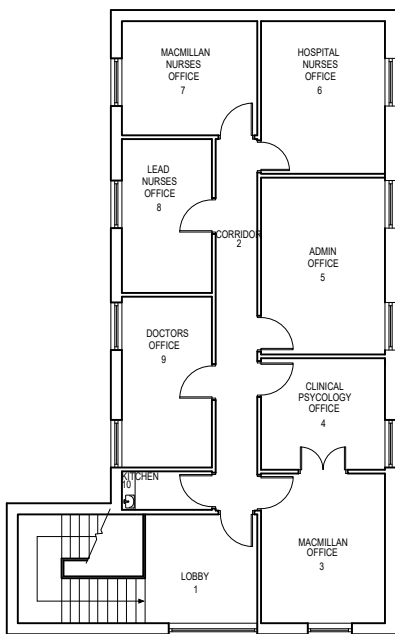
THE FURZE GROUND FLOOR PLAN
GROSS INT AREA = 1150.9 m sq



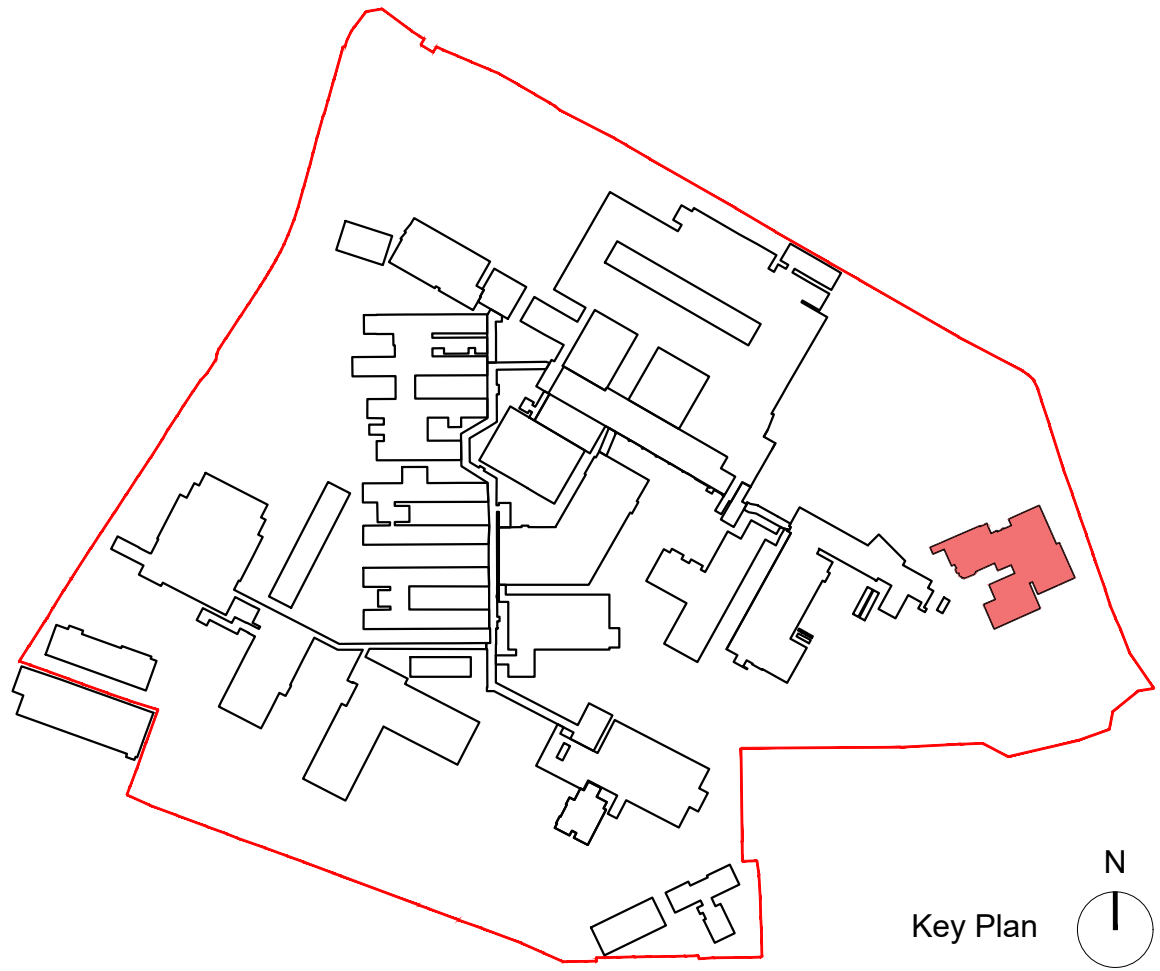
THE FURZE FIRST FLOOR PLAN
GROSS INT AREA = 629.6 m sq



THE FURZE BASEMENT PLAN
GROSS INT AREA = 48.1 m sq



THE FURZE SECOND FLOOR PLAN
GROSS INT AREA = 118.7 m sq



Key Plan

NOTE:
The content of this drawing has been provided by The Hillingdon Hospitals NHS Foundation Trust, therefore IBI Group is not responsible for the accuracy of the content.

- Notes:
- This drawing is copyright.
 - Do not scale dimensions from this drawing.
 - This drawing is to be read in conjunction with all other relevant drawings.
 - All discrepancies on this drawing are to be reported to the architect.
 - Do not modify any element of this drawing.
 - Use drawing only for purpose(s) issued.

North Sign / Key Plan

The following external model files are included within this drawing:

Rev	Date	Revision Notes	AB	TB
P01	21.03.22	First Issue	AB	TB

Client / Contractor



www.ibigroup.com

Project
Hillingdon Hospital Redevelopment

Drawing Title
EXISTING HOSPITAL PLANS - THE FURZE

Job Number	Drawing Originated Date	PAS 1192 Status Code
126649	14/03/2022	S2
Scale@A1	Purpose	
1:200	FOR PLANNING	

Drawing Number	Revision
THHR_01-IBI-WS-ZZ-DR-A-251316	P01