

# The Hillingdon Hospital Redevelopment – Electricity Supply

## Executive Summary

To ensure that a suitable electrical supply was available for the new Hillingdon Hospital development, early engagement with Scottish and Southern Electricity Networks (SSEN) was undertaken by the Trust and their design team.

A quotation for duplicate 10MVA electrical supplies was obtained from SSEN for the new hospital development, and the supplies were secured by the Trust following payment of the non-contestable portion of the quotation and confirmation of acceptance from SSEN on 3<sup>rd</sup> December 2021. An electrical load assessment was undertaken as part of the RIBA Stage 2+ design process which confirmed the 10 MVA is adequate to provide the electrical supply to the new hospital development and future growth.

Technical details regarding the electrical infrastructure, load assessment, a copy of the SSEN quotation and copy of the SSEN acceptance follow in this report.

## 1. 11kV Electrical Supply

Extract from AECOM Utilities Survey Report – THHR\_01-ACM-ZZ-XX-RP-BS-125003 Dated 25 April 2022, amended 19<sup>th</sup> August 2022

### Electricity Infrastructure

All existing site 11kV and LV systems will be modified, amended and removed from the new Hillingdon Hospital Redevelopment area under Enabling works to form an 'exclusion area'.

Discussions and negotiation have been carried out by the consultants Ridge (for the Customer), with Reach Active Ltd (representing Scottish and Southern Electricity Networks) to provide a new incoming Primary Electrical Supply - SSEN Quote and Proposal Ref: ETP363/2 Dated 7<sup>th</sup> September 2021. Information received regarding these negotiations and proposals are provided in this report and summarised as follows:

#### New Hillingdon Hospital:

Incoming Primary Electrical Supply (PES) Capacity – it was originally established that the PES capacity would be in the order of 7 MVA for the all-electric application and design, and delivered to site from two Scottish & Southern Electricity Networks (SSEN) Primary Sub-Stations, giving alternative supply in the event of fault or loss of one Primary DNO 11kV service.

During the Design Stages 1 & 2 the SSEN Proposal for this service was reviewed by AECOM, Reach Active and the Customer to consider interruption time options, and the SSEN network capacity availability. Consequently, amendments were agreed and a revised SSEN proposal (Ref: ETP363/2 Dated 7<sup>th</sup> September 2021), was then secured by the consultant Reach Active Ltd to deliver the following service on diverse routes:

- 10 MVA @ 11kV Primary Supply from the SSEN Yiewsley Primary SS as the normally 'normally live' service.

Note: this increased capacity to 10 MVA will now have allowance for future site growth in addition to agreed spare capacity for future growth of the new Hospital building.

- 10 MVA @ 11kV Primary Supply from the SSEN Hillingdon Primary SS as the secondary support service.

Note: this increased capacity to 10 MVA will now have allowance for future site growth in addition to agreed spare capacity for future growth of the new Hospital building.

- Refer to Appendix C3 for map information.

Within the later Design Stage process the load assessment will be regularly reviewed, when building accommodation spaces (SoA's) and in particularly when Low Carbon technologies and selected Medical Equipment become known. However, the current estimated load analysis has indicated that a peak estimate electrical load will be in the order of 7 to 7.5 MVA – with the remaining spare capacity allocated to future growth.

#### New Multi-storey Car Park:

The new MSCP indicated on this site will be served from the new Hillingdon Hospital Incoming 10 MVA Supply described above, and from the customers side of the Meter. The MSCP will utilise the spare capacity allocated and described above for future growth.

## **2. Supply Secured**

The SSEN offer for 10MVA supply was accepted and the Trust made payment for the non-contestable works to secure the offer in December 2021. Reach Active received confirmation from SSEN on 03/12/2021, that SSEN had received acceptance of the SSEN offer and confirming SSEN team that will be supporting the grid connection.

The Trust have secured a 10MVA automated supply (circuit protected 10MVA connection from Yiewsley with a back-up 10MVA connection from Hillingdon with an automatic switch over in the event of a fault/outage).

### 3. 11kV Distribution

Extract from AECOM RIBA Stage 2 MEP Report – THHR\_01-ACM-ZZ-XX-RP-BS-000005 Dated 29 April 2022, amended 19<sup>th</sup> August 2022.

#### 9.2 11kV Distribution

##### Incoming Primary Electrical Supply (PES) Capacity

A separate Enabling contract (by the Consultants Ridge and Reach Active) established that the PES capacity would be in the order of 7 MVA, and delivered to site from two Scottish & Southern Electricity (SSEN) Primary Sub-Stations, giving alternative supply in the event of fault or loss of one Primary 11kV service.

However, during this RIBA Design Stage 2 the Quotation and Proposal for this service was reviewed by AECOM to consider and question Supply Interruption Time options and Network availability. Consequently, amendments were agreed and a revised SSEN proposal was then secured by the consultant Reach Active Ltd to deliver the following available supply capacities on diverse routes:

SSEN Quote and Proposal Ref: ETP363/2 Dated 7<sup>th</sup> September 2021:

- 10 MVA from the SSEN Hillingdon Primary SS as the secondary support service.

Note: this increased capacity will now have allowance for future growth in addition to the agreed spare capacity in the Hospital Load analysis and estimate

- 10 MVA from the SSEN Yiewsley Primary SS as the normally 'normally live' service.

Note: this increased capacity will now have allowance for future growth in addition to the agreed spare capacity in the Hospital Load analysis and estimate.

It was agreed that during this RIBA Design Stage 2 design process a more detailed AECOM load assessment would be regularly reviewed, when building accommodation spaces (SoA's), and in particularly when low carbon technologies became known. The current estimated Electrical load analysis by AECOM has indicated that a peak estimate electrical load will still be within 7 to 7.5 MVA – see Load Analysis summary extract in Figure 1.

The detailed AECOM Technical Note THHSOC-AEC-ZZ-XX-RP-E-0103 - Electrical Load Analysis, has been circulated through the design development to support the estimated supply capacity requirement.

- Electrical Load Analysis Technical Note:

THHSOC-AEC-ZZ-XX-RP-E-0103	AECOM Electrical Load Analysis
----------------------------	--------------------------------

The Electrical Load Analysis is subject to AECOM observations, some of which are highlighted below:

- Early design stage – with limited information on major loads e.g. Medical Equipment, Mechanical Plant, Support facilities etc. Estimation and review will continue in the next Design Stage 3 with further design development.
- The estimated electrical Hospital load includes the agreed spare capacity of +25% for future Hospital growth.
- The current estimated capacity of 7 to 7.5 MVA is an allowance for the main Hospital building only.
- The MSCP (Multi Storey Car Park) has been recently added to the RIBA Design Stage 2 deliverables required from AECOM. Refer to the separate MEP Report and Drawings for this building.

Currently it is estimated that the MSCP requires an additional 1.5 MVA – subject to further information to be provided on the EV Charging policy by the Consultant Mott McDonald, and in particular an understanding of 'load limiting' technology associated with the proposed EV Charging System.

- Limited estimation of what Low Carbon Technologies may be implemented.
- No allowance for export of site generation.

SUMMARY						
TOTAL DIVERSIFIED LOADS BROUGHT FORWARD.						
				Area (m <sup>2</sup> )	Current (Amps)	KVA
		Basement		4818	212	147
		Level 00		10760	276	191
		Level 01		10936	241	167
		Level 02		9693	228	158
		Level 03		7251	115	79
		Level 04		8705	173	120
		Level 05		9208	143	99
		Level 06		7903	301	209
		Level 07		4735	255	176
		##		0	0	0
		Mech Plant			5,080	3,515
		Medical Plant (Major/Large)			1,503	1,040
		<b>SUB TOTAL</b>			<b>8,528</b>	<b>5,901</b>
Spare Capacity Required tbc	25	Spare Capacity			2,132	1,475
		<b>TOTAL</b>		<b>74009</b>	<b>10,659</b>	<b>7,376</b>

**Figure 1 – Extract from Hospital Estimated Load Analysis**

#### Incoming Primary Electrical Supply (PES) Connection

The proposed service Capacity of 2 x 10 MVA Primary Supplies diversly routed from different SSEN Primary Substations (Yiewsley and Hillingdon Primary S/S), provides 100% redundancy. However, the two SSEN Primary supplies to the site will not be allowed to operate in parallel, and this will be controlled and operated by the SSEN equipment.

Refer to the following listed AECOM External Services drawing (11kV Site Distribution Strategy Layout indicated below), for details of SSEN cable entries from Royal Lane to the site 11kV Incoming Substations.

- 11kV Site Distribution Strategy drawing:

THHR_01-ACM-WS-ZZ-DR-E-613171	11kV Site Distribution Strategy Layout
-------------------------------	--

The SSEN advised on the options available for Primary Supply change-over in the event of one failing, together with interruption times that would be expected. The SSEN options were as follows:

- Option 1 (manual changeover) - will have a supply interruption time of up to 3 hours.
- Option 2 (remote manual changeover) - will have a supply interruption time of minutes to 1 hour.
- Option 3 (remote auto changeover) - will have a supply interruption time of seconds to tens of seconds.
- Option 4 (two Feeders operating in parallel from same Primary S/S) - could have a minimal interruption time.

It was agreed in AECOM/Trust Design Workshops and Design Meetings that 'Option 3' would be the requirement, and the consultant Reach Active negotiated this arrangement into the SSEN proposal. Therefore, in order to accept this connection and control arrangement, the site Electrical Distribution will be designed to manage the supply interruption during the SSEN Primary Supply change-over period. This will be by utilising Secondary Power Supplies (Generators) and Tertiary power sources until the primary power source has been restored and stabilised. Secondary Power Supplies (SPS) are described in the following sections.



## 11kV/LV Site Distribution

The Healthcare Standards (HTM's/HBN's) recommend a 11kV site network for supplies taken at over 2MVA. Therefore, it is proposed this will be a double 11kV Ring to add resilience against single point failure, and each ring 100% rated for the whole site load. The dual ring proposal will provide full duplication of the 11kV distribution capacity, normally operating with both rings in service, at <50% capacity. This enables running the rings 'open' with conventional RMUs, simplest 11kV protection system, and local changeover on the LV side of each Transformer.

There will be a flexibility for expansion in this arrangement i.e., adding further Sub-stations - which again is recommended by the Healthcare Standards. In the next Design Stage 3, it will be discussed how flexible the 11kV distribution should be for change. However, as agreed in the AECOM/Trust Design Workshops and Design Meetings the Customer Incoming main 11kV Switchgear will be designed to be extensible for growth.

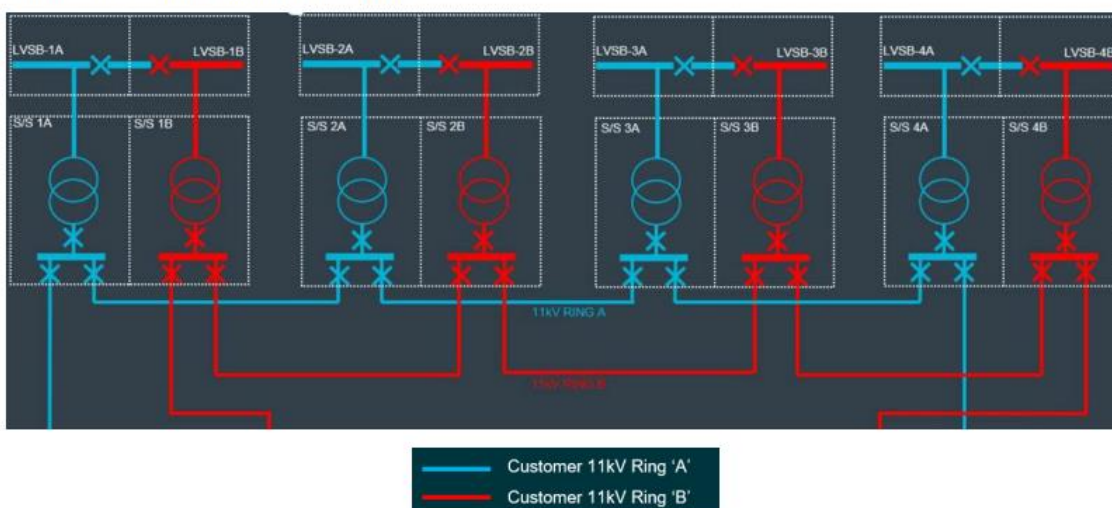
For full details of the proposed site 11kV Distribution refer to the following listed AECOM Design Drawing:

- 11kV Single Line Schematic drawing:  
 | THHR\_01-ACM-ZZ-ZZ-DR-E-617101 | Site - 11kV Single Line Schematic |

To be compliant with the Healthcare Standards we are required to limit Transformers to 2MVA, and therefore we are proposing to provide 4 twin Basement Sub-stations based on the estimated Hospital site demand. This then consists of eight 2 MVA 11kV/0.433 kV Dyn11 Step-down Transformers fed by the Ring Main Units (RMU's) to supply the Hospital electrical system.

Each transformer feeds an LV switchboard in an adjacent Basement LV Switchroom. Local changeover on the LV side will be achieved through automatic switching and would address first event failure on the 11kV dual ring arrangement.

The following diagram (Figure 4) indicates the proposed twin A & B Sub-station arrangement, with dual 11kV Ring, and a minimum N+1 resilience with two Transformers.



**Figure 4 - Typical Site 11kV/LV Sub-station Arrangement**

(Note: this diagram is refined further on the Single Line 11kV Schematic)

## Incoming Primary Electrical Supply (PES) Connection Arrangement

During the development of the RIBA Design Stage 2 design there have been AECOM/Trust Design Workshops and Design Meetings and further dialogue on the SSEN/Reach Active proposal.

The connection arrangement currently set out by SSEN/Reach Active, is indicated in the diagram Figure 2. We believe this follows HTM standards and has been used by DNO's on other recent projects. We also believe that this arrangement provides an efficient solution for combining the SSEN and the Customer (Trust's) equipment and is reflected in the site space planning. The inter-connection between the Trusts 11kV Incoming Switchboards is provided, maintained and the responsibility of the SSEN – refer to Figure 3.

The design intent is that the Hillingdon Hospital dedicated Electricity Primary supply will be provided by the SSEN from either their Hillingdon or Yiewsley Primary Substations. The SSEN Primary supplies will not be allowed to be connected in parallel. In the event of failure of one SSEN Primary supply, the SSEN equipment will auto change-over to the other available SSEN Primary. The Hospital standby generator Secondary Power Supplies (SPS), will provide support to the Hospital electrical infrastructure in the following supply failure events:

- On failure of one SSEN Primary supply there will be a supply break during the auto change-over to the other available Primary supply. The SPS will start and connect to ensure the Hospital electrical infrastructure is supported within 15s. Critical equipment requiring no supply interruption will be provided by other Tertiary power supplies.
- On failure of both SSEN Primary supplies, again the SPS will start and connect to ensure the Hospital electrical infrastructure is supported within 15s. Critical equipment requiring no supply interruption will be provided by other Tertiary power supplies.

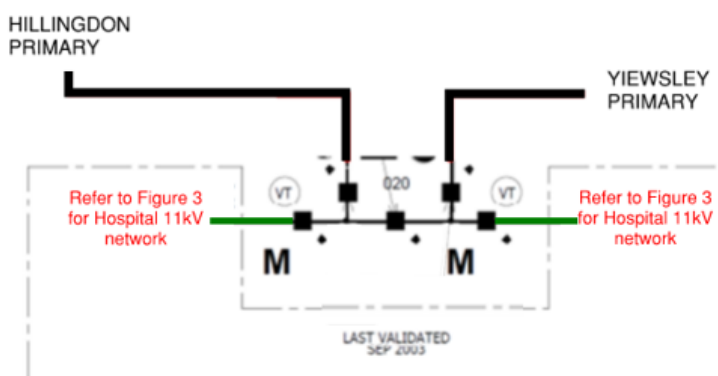


Figure 2 - Extract from SSEN Schematic

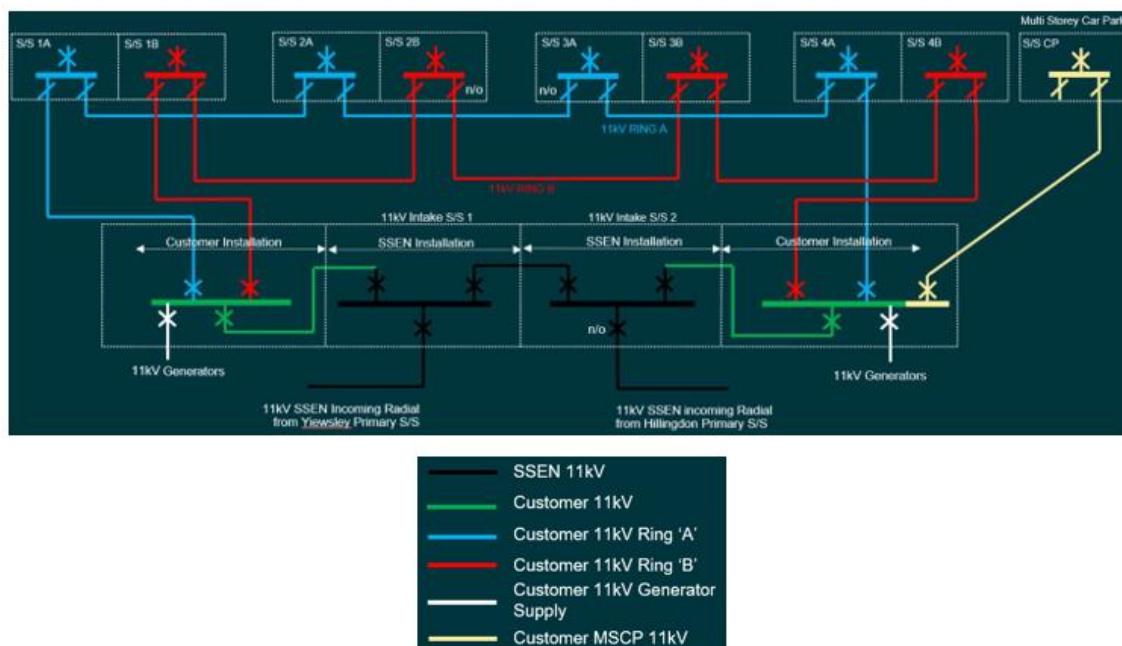


Figure 3 - 11kV Incoming Sub-stations

(Note: this diagram is refined further on the Single Line 11kV Schematic)

Appendix

SSEN Quotation

SSEN Confirmation of Acceptance

**Our reference: ETP363/2**

**Your reference:**

Craig Hamilton  
Reach Active Ltd  
4 Centrus  
Mead Lane  
Hertford  
Hertfordshire  
SG13 7GX

Jennifer Slack  
**Southern Electric Power  
Distribution plc**  
Connections And Engineering  
Walton Park  
Walton Road  
Cosham  
PO6 1UJ



0118 912 6633



jennifer.slack@sse.com



[www.ssen.co.uk](http://www.ssen.co.uk)

7<sup>th</sup> September 2021

Dear Craig

## Hillingdon Hospital - 10MVA Automated Switched Alternative Option

Thank you for your recent enquiry. We are pleased to provide you with an Offer on behalf of Southern Electric Power Distribution plc, for the Non-Contestable Works associated with providing a Point of Connection at the above development. This letter (including the pages attached to it which contain the Breakdown of Charges and Additional charges and assumptions, the Acceptance, and the Information Pack), together with the enclosed Standard Terms and Conditions constitutes our Offer.

Our Offer is subject to our obtaining all necessary legal consents to carry out the work as planned, including any consent required from third parties. Please refer to our website for more detailed information at [www.ssen.co.uk/LandRights](http://www.ssen.co.uk/LandRights).

COE FEE  
(only 1 fee needs to  
be paid across  
versions 1 and 2 of  
ETP363)



**2,486.40**

This is your Connection Offer Expenses amount. Connection Offer Expenses need to be paid whether you wish to accept this offer or not. For more information on Connection Offer Expenses please visit

<https://www.ssen.co.uk/connections/ConnectionOfferExpenses/>

NEW TOTAL



**987,433.46**

OUTSTANDING  
TO PAY IF  
ACCEPTING  
QUOTE



**552,854.02**

This Offer for Non-Contestable Works has been quoted including VAT (as applicable). Our Offer remains open for acceptance for the period stated in the enclosed Standard Terms and Conditions..

**This price may increase as we put in place social distancing measures to comply with guidance relating to the coronavirus pandemic. See [here](#) for more details.**

**You can see a Breakdown of Charges included in our Offer on the next page. Please note that we will not be able to schedule works until you have accepted this Offer and we have received all sums due**


Inveralmond House, 200 Dunkeld Road, Perth PH1 3AQ  **sssen.co.uk**


Scottish and Southern Electricity Networks is a trading name of: Scottish and Southern Energy Power Distribution Limited Registered in Scotland No. SC213459;  
Scottish Hydro Electric Transmission plc Registered in Scotland No. SC213461; Scottish Hydro Electric Power Distribution plc Registered in Scotland No. SC213460;  
(all having their Registered Offices at Inveralmond House 200 Dunkeld Road Perth PH1 3AQ); and Southern Electric Power Distribution plc Registered in England & Wales  
No. 04094290 having its Registered Office at No.1 Forbury Place, 43 Forbury Road, Reading, RG1 3JH which are members of the SSE Group [www.ssen.co.uk](http://www.ssen.co.uk)




and payable on acceptance for the works detailed in this Offer. Where your Offer includes reinforcement or you are a Second Comer and the initial connector has not yet been energised, then your connection cannot be energised until these works are complete. Upon completion of the electrical works you are also required to pay any applicable 'Second Comer' charge as set out in this Offer, in accordance with the Electricity (Connection Charges) Regulations (ECCR).


Please be aware your Connection Offer Expense amount is payable whether or not you wish to accept this offer. Payment of the Connection Offer Expense amount does not mean you have accepted your offer. If you wish to accept your offer at a later date after paying for your Connection Offer Expense, please pay the remaining balance of your Offer before the end of your validity period. You are only required to pay one £2,486.40 Connection Offer Expense fee across ETP363 version 1 and ETP363 version 2.

 **There may be other parties competing to deliver the connections for this development, who have or will receive a competing Point of Connection (POC) offer from .The acceptance of this Offer is conditional upon any other such offers not having been accepted. Upon acceptance of any other such offer, the facility to accept this Offer will no longer be available and the Offer will be withdrawn.**

 Please be aware that, due to the novel coronavirus pandemic ("COVID-19"), we expect that the charges set out in this Offer will be increased due to the cost of putting in place restrictions and measures to comply with the applicable legislation and government and regulatory guidance relating to COVID-19 including those required to implement social distancing and safe working practices.

If the charges are increased for this reason after this Offer has been accepted, we shall submit written details of the additional costs to be paid by you within the period for payment set out therein (or as otherwise agreed with us). If you do not make payment to us in full within the period for payment, the Agreement shall terminate immediately and you will be required to pay our reasonable costs and / or expenses incurred and / or committed in respect of the Works (including but not limited to any works undertaken or to be undertaken, labour hours, materials and equipment) and for any costs or expenses incurred or committed by us in obtaining any Land Rights, planning and/ or other consents.

 The quotation has been calculated based on the information provided to date but please be aware that we will charge for any additional work required that has not been included in this Offer. It is important that you check the Offer thoroughly to avoid incurring any further charges.

 Our right to terminate is set out in the Standard Terms and Conditions enclosed with this Offer Letter. For the purposes of termination of contract, the period specified is 12 months from the date of your acceptance of this Offer.

### How long will it take?

It typically takes us 6 months to complete a connection offer of this type, from the date acceptance is received. This date relates only to the Distribution Works required to provide the Connection, where applicable, and does not account for any Transmission Works that may be required.

This timescale is dependent on:

1. any further discussions we may have with you regarding the programming of the works;
2. all necessary land rights, planning and other consents being obtained in sufficient time;

Inveralmond House, 200 Dunkeld Road, Perth PH1 3AQ  **ssen.co.uk**

Scottish and Southern Electricity Networks is a trading name of: Scottish and Southern Energy Power Distribution Limited Registered in Scotland No. SC213459; Scottish Hydro Electric Transmission plc Registered in Scotland No. SC213461; Scottish Hydro Electric Power Distribution plc Registered in Scotland No. SC213460; (all having their Registered Offices at Inveralmond House 200 Dunkeld Road Perth PH1 3AQ); and Southern Electric Power Distribution plc Registered in England & Wales No. 04094290 having its Registered Office at No.1 Forbury Place, 43 Forbury Road, Reading, RG1 3JH which are members of the SSE Group [www.ssen.co.uk](http://www.ssen.co.uk)

3. the completion of any works by other people or companies (which may include you) that must be done before we can complete our works;
4. any access arrangements as may be specified in this connection offer;
5. any delays to the works due to unplanned outages on the Distribution network.

The above timescale is indicative and should be used for general planning purposes only as the completion date for the work has not yet been formally agreed.

**INTERACTIVITY PROCESS:** If we receive a number of applications for connection to the same part of our distribution system and there is insufficient capacity or other constraints that will prevent those connections and your proposed connection from being made, we will apply our interactive connection application process.

**If your connection offer becomes interactive we will notify you of this.** To avoid delays in our interactive connections process, **the period within which each customer will have to accept an interactive connection offer is reduced to 30 days, or less if the period remaining for a customer to accept the offer is already shorter than 30 days.** For the avoidance of doubt, it will not be possible to extend the acceptance period where the interactive connections process applies. More detail of the interactivity process can be found in the interactivity section of our website:

<https://www.ssen.co.uk/Connections/InteractivityProcess/>

We have enclosed with this Offer an Information Pack, which contains information relevant to the work for which you have been quoted. Our **Statement of Methodology and Charges for Connection** provides detailed information regarding our charges. You can download our **Statement of Methodology and Charges for Connection** from our website at [www.ssen.co.uk/Library/ChargingStatements](http://www.ssen.co.uk/Library/ChargingStatements). We trust the information we have provided is of assistance and if we can help further please do not hesitate to contact us. Alternatively, you may wish to visit our website at [www.ssen.co.uk](http://www.ssen.co.uk) for further information.

Yours sincerely,

Jennifer Slack  
Network Connections Designer

## Glossary of Defined Terms

<b>“Adoption Agreement”</b>	An agreement for us to adopt the Contestable Work, subject to the satisfaction of certain conditions.
<b>“Connections Regulations”</b>	Means regulations made in relation to connections standards of performance under section 29A of the Electricity Act 1989.
<b>“Contestable Works”</b>	Also known as Contestable Connection Activities, are works necessary for the provision of the Connection which can also be undertaken by an ICP or an IDNO.
<b>“Connection Offer Expenses”</b>	Means The Electricity (Connection Offer Expenses) Regulations 2018. These regulations permit SSEN to charge the Customer for work undertaken in the preparation of the Connection Offer.
<b>“Distribution Code”</b>	Means the Distribution Code that Scottish Hydro Electric Power Distribution plc and Southern Electric Power Distribution plc is required to maintain in force.
<b>“DNO”</b>	Means Distribution Network Operator. Electricity distribution networks carry electricity from the high voltage transmission grid to industrial, commercial and domestic users. Scottish Hydro Electric Power Distribution plc and Southern Electric Power Distribution plc are licensed distribution network operators (DNOs).
<b>“Licence”</b>	Also known as Electricity Distribution Licence means an electricity distribution licence granted or treated as granted under section 6 (1) (c) of the Electricity Act 1989 that authorises a electricity distributor to distribute electricity.
<b>“Non-Contestable Works”</b>	Also known as Non-Contestable Connections Services, are those services which are necessary for the provision of a connection and in accordance with our Connection Charging Statement, cannot be provided by a person other than Scottish Hydro Electric Power Distribution plc or Southern Electric Power Distribution plc.
<b>“Point of Connection”</b>	The point (or points) of physical connection to our existing Distribution System.
<b>“Second Comer”</b>	Any connectee who subsequently connects to and benefits from infrastructure paid for by an earlier connectee and is therefore liable to pay for their share of incurred costs under the Electricity (Connection Charges) Regulations.
<b>“Statement of Methodology and Charges for Connection”</b>	The Connection Charging Methodology is a complete and documented explanation of the methods, principles and assumptions for our connection charges. The Connection Charging Statement sets out the basis of charges for the provision of a connection.
<b>“The Electricity (Connection Charges) Regulations or (ECCR)”</b>	Means The Electricity (Connection Charges) Regulations 2002 or Electricity (Connection Charges) Regulations 2017 as applicable. These regulations provide that where a person connects to and benefits from electricity infrastructure that was paid for by an initial connectee, the earlier connectee can be reimbursed for a share of the costs by subsequent connecting customers.

## Offer to provide Non-Contestable Works Only

### What you need to do

→ You are required to ensure that all works on your own electrical installations are carried out by a qualified electrical contractor. Statutory qualification schemes, for Building Regulation purposes, are currently run by NICEIC, SELECT, ECA, NAPIT, ELECSA, British Standards Institution and BRE Certification.

→ Please enclose either a cheque or, if paying by Bank Transfer, make payment before acceptance. Alternatively, you may call to pay by credit/debit card or use our online services.

### Please note

! Southern Electric Power Distribution plc is the Distribution Network Operator (DNO) for the area in which your project is located.

! This Offer serves as a notice under Section 16A (5) of the Electricity Act 1989. Should you have any concerns relating to this Offer please contact us using the details on the first page of this letter and we will try to resolve any issues directly with you. If you still then have concerns, Section 23 of the Act allows for any unresolved disputes relating to the provision of this Offer to be determined by the Gas and Electricity Markets Authority (the "Authority"). The dispute must be referred to the Authority within 12 months following the date of connection. The dispute may be determined either by an Order of the Authority, or referred by the Authority for arbitration. An order made in relation to the dispute shall be final and binding on the parties and may include a direction to pay costs and expenses.

### Breakdown of Charges

#### Description of non-contestable charges

- Final connection for Hilling Hospital temp substation.	
- Final connection for permanent supply.	
- Disconnection of Hillingdon Hospital substation.	
- Disconnection of Hillingdon Hospital Annex substation.	
- Disconnection of Hillingdon Hospital temp substation.	
Design Approval	£1,575.00
Final legal Paperwork for wayleaves / legals	£450.00
Final connection	£225,169.09
Inspection & Monitoring	£315.00
Connection Offer Expenses	£2,072.00
<b>Total non-contestable charges</b>	<b>£229,581.09</b>

#### Description of other non-contestable charges

Operational and maintenance charge (for assets installed over and above the minimum scheme)	£593,280.13
<b>Total other charges</b>	<b>£593,280.13</b>

#### TOTALS

Net total at standard rate VAT	£822,861.22
Net total at low rate VAT	£0.00
Net total at zero rate VAT	£0.00
VAT at standard rate (20%)	£164,572.24
VAT at low rate (5%)	£0.00
<b>Total charge to applicant</b>	<b>£987,433.46</b>

Please refer to our enclosed Detailed Cost Breakdown for further information.

Please note, you are required to submit a design to us (for our approval or for our review if self-design approval) and to enter into an Adoption Agreement with us, for the Contestable Works to be adopted by us, prior to final connection. More details on what is required for design approval can be found on our website at [www.ssen.co.uk/CompetitionInConnections/](http://www.ssen.co.uk/CompetitionInConnections/).

Where we are asked to approve the design, an additional charge is required to be paid. You can find information on our charges on our website in our Statement of Methodology and Charges for Connection.

Send your design for review or approval to [nc.connections@sse.com](mailto:nc.connections@sse.com) or you can send it to us on your web tracking page.

## Additional charges and assumptions

We reserve the right to amend the charges at any time after the date of this Offer as a result of variations to material or labour costs which will impact upon the costs incurred by us in providing the Connection. Please note that whilst such changes in costs may occur at any time due to contractual variations and/or our rights and/or obligations to recover costs incurred pursuant to legislation or our licence, such a change is very likely to be relevant where the estimated date of completion of the Distribution Works is in excess of 12 months from the date of this Offer.

### Normal Feeding Arrangement for Permanent Supply

The two HV incomers provided for the permanent 10MVA supply will be from Hillingdon 33/11kV primary on E16L5 and Yiewsley 33/11kV primary on E20L5. The site demand is to be split between the two HV incomers as follows:

Yiewsley feeder YIEW E20L5 to be normally loaded to the full 10MVA

Hillingdon feeder HIIN E16L5 to be normally left with no load connected (backfeed only)

**A parallel between the two HV incomers must not be made without authorisation from an SSEN Control Engineer.**

### Land Rights (including wayleaves), Planning and Other Consents

Third party consents may be required for the Non-Contestable Works and we have assumed that they will be granted without dispute and in accordance with Southern Electric Power Distribution plc's standard land rights' style agreements.

Where we are unable to obtain third party consents, the design and terms of our contract with you may need to be revised and you will need to meet any associated additional costs that may be incurred by us or such third party, arising from but not limited to:

#### Land rights

- Legal and other professional fees and expenses incurred by us and any third party in connection with securing the required land rights;
- Wayleave fees levied by third parties to process wayleave agreements; and
- Costs associated with any compulsory purchase or necessary wayleave applications, which may have to be submitted under the Electricity Act 1989. Timescales and costs for determination of a compulsory purchase or wayleave consent will depend on the specific circumstances of the application. An application for a compulsory purchase or necessary wayleave does not guarantee a positive determination. The decision to pursue a compulsory purchase or necessary wayleave remains at the sole discretion of Southern Electric Power Distribution plc.

#### Other consents

- Specialist ecology surveys;
- Tree cutting compensation and sterilisation;
- Archaeology investigations including watching briefs; and
- Damage claims and any associated surveyor's fees where the damage is over and above what is reasonably necessary to undertake the works.

### Important notice: Traffic Management Act – Street Works Permit schemes

Local Authorities in England and Wales are likely to introduce a new Permit Scheme for street works that will include charges for providing the permits. It is not clear at this time which Local Authorities will introduce this scheme, when the scheme will be introduced, which streets will be affected or what the level of charges will be. These charges are not within Southern Electric Power Distribution plc's control.



This Offer excludes any charges that may be levied by the Local Authority in respect of these costs. It is important to note that any such charges which are relevant to this project will be subsequently passed on to you through a separate invoice. In addition to the actual charges from the Local Authority, we will charge £25.00 + VAT to cover our administrative charges. Acceptance of this Offer means that you also accept these additional charges.

You may wish to seek clarification on how these charges may affect you from the relevant Local Authority.



**Job reference: ETP363/2**

**Offer for Final connection for temporary and permanent substations, and disconnection works at Hillingdon Hospital**

Please pay your Connection Offer Expense within 30 days of receiving an invoice from us for this amount. Please follow the advice below on how to pay when paying for your Connection Offer Expense.

Please indicate your acceptance of this:

☐

Non-Contestable Works only

You can pay the charges set out in this Offer by credit or debit card, cheque or bank transfer, either by post, by phone or via our website (if you are registered). Please note that we only accept card payments for charges up to £10,000 in value (including VAT).

If you wish to pay by credit or debit card, please call our payment line on 0800 197 5527 and complete this form and return it to us by post or email:

Attn. Quote Acceptance, Connections and Engineering  
Scottish and Southern Electricity Networks  
Walton Road  
Cosham  
PO6 1UJ

E-mail: [quote.acceptance@sse.com](mailto:quote.acceptance@sse.com)

If paying by cheque, please make it payable to Southern Electric Power Distribution plc. Please complete this form and return it with your cheque to the address above.

If paying by bank transfer, you must instruct your bank to transfer funds **before** returning this form to the above address. Please ask your bank to label your payment with the job reference as given above. Our bank account details are:

<b>Account name:</b>	Southern Electric Power Distribution plc
<b>Bank:</b>	NatWest
<b>Sort code:</b>	60-17-21
<b>Account number:</b>	89542592
<b>IBAN code:</b>	GB17 NWBK 601721 89542592
<b>Swift No (BIC):</b>	NWBK GB 2L
<b>UTR:</b>	64581 10616
<b>VAT registration number:</b>	553 7696 03

**Amount Paid:**



Choose your method of payment:

☐

Cheque

☐

Bank Transfer

☐

Credit/Debit Card





If you wish to accept this Offer please provide the payer's name and address.

Inveralmond House, 200 Dunkeld Road, Perth PH1 3AQ  **sse.co.uk**

Scottish and Southern Electricity Networks is a trading name of: Scottish and Southern Energy Power Distribution Limited Registered in Scotland No. SC213459;  
Scottish Hydro Electric Transmission plc Registered in Scotland No. SC213461; Scottish Hydro Electric Power Distribution plc Registered in Scotland No. SC213460;  
(all having their Registered Offices at Inveralmond House 200 Dunkeld Road Perth PH1 3AQ); and Southern Electric Power Distribution plc Registered in England & Wales  
No. 04094290 having its Registered Office at No.1 Forbury Place, 43 Forbury Road, Reading, RG1 3JH which are members of the SSE Group [www.sse.co.uk](http://www.sse.co.uk)

**PRINT  
payer's  
name and  
address:**

If you wish to accept this Offer please date and sign the acceptance at the end of this acceptance form.

-  Once we have received your payment in cleared funds we will issue a receipt to you at the address you have notified to us, or to such alternative address as you advise us prior to issue of the receipt.
-  If we receive your payment without this completed acceptance form, we shall be entitled but not obliged to treat your payment as acceptance of our Offer.
-  If you cancel the works referred to in this Offer before commitment or commencement of any associated tasks, we will return any sums paid to us minus administration costs. If you entered into a contract with us as a consumer the terms of our Supplementary Consumer Terms and Conditions will apply in respect of your cancellation and refund rights.
-  If you cancel the works before completion, we will deduct any costs incurred which will include the costs of any site visits conducted, drawings and plans produced for your works and administration costs incurred prior to receipt of your cancellation notice. If you entered into a contract with us as a consumer the terms of our Supplementary Consumer Terms and Conditions will apply in respect of your cancellation and refund rights.

If you are accepting this Offer as a consumer our Standard Terms and Conditions are varied by the enclosed Supplementary Consumer Terms and Conditions. Please note that your rights as a consumer mean that you are entitled to cancel the contract within 14 days following your acceptance of our Offer and we must refund any payment you have made to us in respect of the works. We are not allowed to commence the works during this 14 day period, unless you consent to this. If you want us to undertake the works at the earliest possible date and where possible to start during the 14 day cancellation period please confirm by marking an "X" in the box below.

☐ ..... I confirm that I consent to the provision of the works during the 14 day cancellation period and that I have read the enclosed Supplementary Consumer Terms and Conditions.

Please note that it may not be possible for us to commence the works during the 14 day cancellation period and your consent does not mean that we are under any obligation to do so.

I confirm that I have read, understood and accept the terms and conditions set out in and accompanying this Offer.

**Signed:** \_\_\_\_\_ **Date:** \_\_\_\_\_

**Name  
(PRINT)** \_\_\_\_\_


**Position  
(PRINT)** \_\_\_\_\_





Please use this sheet as a return address.

Quote Acceptance Team  
Connections and Engineering  
Scottish and Southern Electricity Networks  
Walton Road  
Cosham  
PO6 1UJ

Inveralmond House, 200 Dunkeld Road, Perth PH1 3AQ  **ssen.co.uk**

Scottish and Southern Electricity Networks is a trading name of: Scottish and Southern Energy Power Distribution Limited Registered in Scotland No. SC213459;  
Scottish Hydro Electric Transmission plc Registered in Scotland No. SC213461; Scottish Hydro Electric Power Distribution plc Registered in Scotland No. SC213460;  
(all having their Registered Offices at Inveralmond House 200 Dunkeld Road Perth PH1 3AQ); and Southern Electric Power Distribution plc Registered in England & Wales  
No. 04094290 having its Registered Office at No.1 Forbury Place, 43 Forbury Road, Reading, RG1 3JH which are members of the SSE Group [www.ssen.co.uk](http://www.ssen.co.uk)



## Information pack

We have enclosed this Information Pack which we trust you will find useful. This pack contains information relevant to the Offer made. However, if you have any further questions, please don't hesitate to contact us.

### Contents

#### Safety

When we carry out any job, Safety is our first priority. Your safety is important to us. Our motto is, "We do it safely, or not at all". Please read the enclosed information carefully and if in any doubt, please ask us to explain.

#### Connections Guaranteed Standards of Performance

The Connections Guaranteed Standards of Performance are guaranteed standards of service levels set out under the Connections Regulations and must be met by each distribution company. These standards have been set to guarantee a level of service that is reasonable to expect companies to deliver.

If the distribution company fails to meet the level of service required, it may be obliged to make a payment to the customer. To find out what these guaranteed standards of performance cover please visit our website at [www.ssen.co.uk/CustomerService/PerformanceStandards](http://www.ssen.co.uk/CustomerService/PerformanceStandards).

Please visit the Gov.uk website at [www.legislation.gov.uk/ukxi/2015/698/made](http://www.legislation.gov.uk/ukxi/2015/698/made) if you require more information in relation to guaranteed standards in respect of demand connections. For generation connections Ofgem's Distributed Generation Standards Direction Guidance Document can be located at [www.ofgem.gov.uk/publications-and-updates/distributed-generation-standards-direction-guidance-document](http://www.ofgem.gov.uk/publications-and-updates/distributed-generation-standards-direction-guidance-document).

#### Your Point of Connection details

This details what size (capacity) and voltage your connection(s) will be.

This also gives your Point of Connection and details of any special or unusual load you may have requested to be included in your connection such as motors and welders.

## Safety

We ask you to take note of the following:

In accordance with the Health and Safety Executive Guidance Note GS6, you are required to take every precaution to ensure that cranes, tipper lorries, scaffolding, ladders and other plant employed on your works are kept at a safe distance from overhead electric lines and their supports and that such supports are not disturbed by excavations. Goal posts with height restriction will need to be placed at appropriate locations for vehicles passing underneath Southern Electric Power Distribution plc's overhead lines.

In accordance with Health and Safety Executive Guidance Note HSG47 care will also be necessary when digging in proximity to underground cables, particularly if mechanical excavators are used.

Overhead lines, underground cables and other electrical plant must be regarded as being "live". Before commencing work in proximity to such plant, written notification must be given to Southern Electric Power Distribution plc.

If during the course of your works, any cable should be damaged by you/or your contractors, then this fact must be reported to our Emergency Service Centre on 08000 72 72 82 immediately. You will be liable to us for the full cost of any repairs.

## Locating cables on site

Any drawings that we have enclosed with this Offer may not be suitable for locating cables on site due to scaling issues. If you wish to obtain the latest copies of our cable records please refer to <https://www.linsearchbeforeudig.co.uk/>

You must excavate hand-dug trial holes to establish the actual positions of all cables before any mechanical excavation works commence.

## Your Point of Connection details

### HV Point of Connection – Permanent 10MVA Supply

The points of connection are via termination of your proposed 500mm Cu singles and pilot/fibre cables to two existing 11kV circuit breakers, one at Hillingdon primary substation and one at Yiewsley primary substation.

The connection will be 11,000 Volts at 50 Hz, with a maximum capacity of 10,000kVA.

The site demand is to be split between the two HV incomers as follows:

Yiewsley feeder YIEW E20L5 to be normally loaded to the full 10MVA

Hillingdon feeder HIIN E16L5 to be normally left with no load connected (backfeed only)

**A parallel between the two HV incomers must not be made without authorisation from an SSEN Control Engineer.**

The fault level at this point could rise to 381MVA and you are advised to design your network accordingly.

### A Network to be adopted by Southern Electric Power Distribution plc

For any network subsequently to be adopted by Southern Electric Power Distribution plc, your design of any Contestable Works, including substation buildings and plinths must comply with our Standards and Specifications and the process for adoption of these assets will be as laid out in documents on our website. Access to our Standards and Specifications, network information and GIS is via a secure login applied for and accessed at: [www.ssen.co.uk/CompetitionInConnections](http://www.ssen.co.uk/CompetitionInConnections).

**Please be advised that it is vital that the Adoption Agreement is properly entered into by BOTH parties BEFORE any works commence on site. Any plant or cable installed before the Adoption Agreement is entered into is at your own risk and any costs incurred in carrying out inspections and making these assets subsequently fit for adoption will be borne by you. Southern Electric Power Distribution plc will not be responsible for any delays to the programme which may result.**

The current model of Adoption Agreement can be viewed on our website.

You will require to carry out the contestable works to be adopted subject to the necessary safety precautions, consents and wayleaves and other appropriate conditions, agreements and standards and specifications being satisfied including:

- Design for the connection downstream from the Point of Connection to the existing assets.
- Procurement and provision of the required materials.
- All excavation, trenching and reinstatement (whether temporary or permanent) including excavations for the non-contestable final connection joint.
- Provision and installation of all mains and service ducting.
- Recording of work, location of cable routes and equipment and the provision of this information to us.
- Making provision for the installation of metering equipment by an approved Meter Operator.

All jointing will be in accordance with our approved design within the scope and authorisation level of our current Safety Management Procedures.

The contestable works and your installation must be designed and installed in accordance with the technical engineering requirements of the Distribution Code and the following Engineering Recommendations:

- (i) Engineering Recommendation G5/4 ("Planning Levels for Harmonic Voltage Distortion and the Connection of Non-Linear Equipment to Transmission Systems and Distribution Networks in the United Kingdom")

- (ii) Engineering Recommendation P28 (“Planning Limits for Voltage Fluctuations caused by Industrial, Commercial and Domestic Equipment in the UK”)

### High Voltage connection responsibilities and obligations

The Electricity at Work Regulations 1989 requires any customer with a supply at HV to appoint a Competent Person of sufficient technical knowledge or experience to prevent danger or injury. Up to date information and guidance on fulfilling this responsibility is available at [www.hse.gov.uk/electricity](http://www.hse.gov.uk/electricity).

The Distribution Code requires Southern Electric Power Distribution plc and HV connected customers to jointly establish the following:

- A Safety Management System for work at / across Ownership Boundaries.
- Control Persons to operate the Safety Management System.
- A Documentation System for inter-system safety precautions.
- Authorisation of staff operating the Safety Management System.
- Site Hazard Management Procedures.
- An Ownership, Control, Operation and Maintenance Schedule.
- Control Diagrams.
- Control Log (12 months).
- Communications.

Part of these requirements will be addressed in a Joint Operating Agreement (JOA) to be entered into between Southern Electric Power Distribution plc and the HV connected customer. This will consist of three parts:

- The first part details the procedures to be adopted;
- The second part is either an Operational Diagram for simple networks showing the ownership, operation and control boundary, or in the case of more complex networks an Operational Diagram supported by a signed Site Responsibility Schedule. (In the case of networks where the boundaries for ownership, operation and/or control are at different positions, or are complex, then a separate Site Responsibility Schedule is required); and
- The third part is an addendum which contains supporting information, e.g. contact telephone numbers, authorised persons, etc.

The Joint Operating Agreement will be completed and signatures obtained by our staff responsible for energising the new connection, and they may also require a copy of your HV network diagram.

Any changes which affect the Joint Operating Agreement, including changes to the customer's HV network, should be notified to Southern Electric Power Distribution plc. We will consider if your Point of Connection Offer may accommodate this. We may also revise your existing Joint Operating Agreement where required. You will be liable for any additional costs this may incur.

**Please note** we will not be able to energise your connection until the Joint Operating Agreement is in place.



## Your Point of Connection details

### HV Point of Connection – Temporary 2MVA Supply

The points of connection/diversion for the temporary supply are via 2 x HV straight joints as shown on the enclosed drawing "DESIGNDOCUMENT3"

The connection will be 11,000 Volts at 50 Hz, with a maximum capacity of 2MVA (this is an increase of 400kVA on top of the existing 1.6MVA supply).

The fault level at this point could rise to 381MVA and you are advised to design your network accordingly.

### A Network to be adopted by Southern Electric Power Distribution plc

For any network subsequently to be adopted by Southern Electric Power Distribution plc, your design of any Contestable Works, including substation buildings and plinths must comply with our Standards and Specifications and the process for adoption of these assets will be as laid out in documents on our website. Access to our Standards and Specifications, network information and GIS is via a secure login applied for and accessed at: [www.ssen.co.uk/CompetitionInConnections](http://www.ssen.co.uk/CompetitionInConnections).

**Please be advised that it is vital that the Adoption Agreement is properly entered into by BOTH parties BEFORE any works commence on site. Any plant or cable installed before the Adoption Agreement is entered into is at your own risk and any costs incurred in carrying out inspections and making these assets subsequently fit for adoption will be borne by you. Southern Electric Power Distribution plc will not be responsible for any delays to the programme which may result.**

The current model of Adoption Agreement can be viewed on our website.

You will require to carry out the contestable works to be adopted subject to the necessary safety precautions, consents and wayleaves and other appropriate conditions, agreements and standards and specifications being satisfied including:

- Design for the connection downstream from the Point of Connection to the existing assets.
- Procurement and provision of the required materials.
- All excavation, trenching and reinstatement (whether temporary or permanent) including excavations for the non-contestable final connection joint.
- Provision and installation of all mains and service ducting.
- Recording of work, location of cable routes and equipment and the provision of this information to us.
- Making provision for the installation of metering equipment by an approved Meter Operator.

All jointing will be in accordance with our approved design within the scope and authorisation level of our current Safety Management Procedures.

The contestable works and your installation must be designed and installed in accordance with the technical engineering requirements of the Distribution Code and the following Engineering Recommendations:

- (iii) Engineering Recommendation G5/4 ("Planning Levels for Harmonic Voltage Distortion and the Connection of Non-Linear Equipment to Transmission Systems and Distribution Networks in the United Kingdom")
- (iv) Engineering Recommendation P28 ("Planning Limits for Voltage Fluctuations caused by Industrial, Commercial and Domestic Equipment in the UK")

### High Voltage connection responsibilities and obligations

The Electricity at Work Regulations 1989 requires any customer with a supply at HV to appoint a Competent Person of sufficient technical knowledge or experience to prevent danger or injury. Up to date information and guidance on fulfilling this responsibility is available at [www.hse.gov.uk/electricity](http://www.hse.gov.uk/electricity).

The Distribution Code requires Southern Electric Power Distribution plc and HV connected customers to jointly establish the following:

- A Safety Management System for work at / across Ownership Boundaries.
- Control Persons to operate the Safety Management System.
- A Documentation System for inter-system safety precautions.
- Authorisation of staff operating the Safety Management System.
- Site Hazard Management Procedures.
- An Ownership, Control, Operation and Maintenance Schedule.
- Control Diagrams.
- Control Log (12 months).
- Communications.

Part of these requirements will be addressed in a Joint Operating Agreement (JOA) to be entered into between Southern Electric Power Distribution plc and the HV connected customer. This will consist of three parts:

- The first part details the procedures to be adopted;
- The second part is either an Operational Diagram for simple networks showing the ownership, operation and control boundary, or in the case of more complex networks an Operational Diagram supported by a signed Site Responsibility Schedule. (In the case of networks where the boundaries for ownership, operation and/or control are at different positions, or are complex, then a separate Site Responsibility Schedule is required); and
- The third part is an addendum which contains supporting information, e.g. contact telephone numbers, authorised persons, etc.

The Joint Operating Agreement will be completed and signatures obtained by our staff responsible for energising the new connection, and they may also require a copy of your HV network diagram.

Any changes which affect the Joint Operating Agreement, including changes to the customer's HV network, should be notified to Southern Electric Power Distribution plc. We will consider if your Point of Connection Offer may accommodate this. We may also revise your existing Joint Operating Agreement where required. You will be liable for any additional costs this may incur.


**Please note** we will not be able to energise your connection until the Joint Operating Agreement is in place.

## The Company's Standard Terms and Conditions

### Definitions:

The "Company":	Shall mean either Scottish Hydro Electric Power Distribution plc or Southern Electric Power Distribution plc as specified in the Offer Letter;
The "Adoption Agreement":	The agreement between the Customer and the Company for adoption of any Contestable Connection Works undertaken by the Customer;
The "Agreement":	The agreement constituted by the Offer and the Customer's acceptance and any permitted variation from time to time;
The "Agreement Date":	The date of the Customer's acceptance of the Offer;
The "Company's Requirements":	The Company's technical requirements as set out on the Website and the Offer;
The "Connection Agreement":	The agreement between the Company and the Customer relating to the connection of the Customer's premises;
"Consumer":	Means an individual acting for purposes which are wholly or mainly outside the individual's trade, business, craft or profession;
"Consumer Terms and Conditions":	Means the Supplementary Consumer Terms and Conditions attached to these Standard Terms and Conditions;
The "Contestable Connection Works":	The part of the Works that the Customer may elect to undertake or appoint an appropriate third party to undertake;
The "Cost Apportionment Contribution":	A financial contribution made with respect to the costs of connection from the Company in favour of the Customer;
The "Customer":	The person, firm or company whose name and address is shown in the Offer Letter;
The "Equipment":	The equipment, plant and/ or apparatus the Company will supply as detailed in the Offer Letter;
The "Land Rights":	Means rights in, under or over land for the construction, installation, operation, repair, maintenance, renewal or use of the Contestable Connection Works and/or the Works;
The "Land Rights Criteria":	The criteria as set out on the Website providing the Company's requirements for Land Rights;
The "Offer":	These standard terms and conditions and the Offer Letter;
The "Offer Letter":	The letter and attached pages sent to the Customer by the Company setting out details of the Works, the Quotation and other matters relating to the connection;
The "Quotation":	The Quotation for the Works as set out in the Offer Letter;
The "Information Pack":	The customer site requirements document supplied with the Offer;
The "Website":	The website at <a href="http://www.ssen.co.uk">www.ssen.co.uk</a> or at such other domain name as the Company may use from time to time;
The "Works":	The works that the Company will carry out as detailed in the Offer; and
"Second Comer Charge":	Means any amounts payable by the Customer pursuant to The Electricity (Connection Charges) Regulations 2002 or Electricity (Connection Charges) Regulations 2017 as applicable.

- The Offer remains open for acceptance in writing for 90 days from the date of issue, unless notified by the Company in writing to the contrary. The Company reserves the right to amend or withdraw the Offer at any time prior to the Customer accepting it.
- If the Customer has entered into the contract as a Consumer, the Consumer Terms and Conditions shall be incorporated into these terms and conditions and to the extent of any inconsistency, the terms of the Consumer Terms and Conditions shall prevail.
- The Customer will provide the Company with the facilities reasonably necessary to enable it to complete the Works in the most economical manner. In default the Customer shall pay the Company such reasonable additional costs that may result.
- Where any changes to the Works are required other than as a result of the Company's negligence the Company shall submit written details of the additional cost to the Customer who shall be entitled to terminate the contract upon giving the Company written notice within 5 working days of the date of submission of such details. In the event of termination the Customer shall pay the Company's reasonable charges for the work done or committed and materials purchased prior thereto and reimburse any costs or expense incurred or committed by the Company in obtaining any wayleaves and consents.
- In accordance with the Land Rights Criteria, the Customer will (i) grant (at no cost to the Company, or for a nominal sum of £1) any Land Rights for cables, overhead lines, substations and all other apparatus to be installed over or within their property, (ii) provide and install ducts for on site road crossings and for service cable entry and (iii) agree service terminations in a position acceptable to the Company and provide and install service tubes from the back of the footpath to the premises to which the connection is required terminating where possible in an external meter reading cabinet.
- The Customer will meet (i) their own agent's legal and other fees and expenses, (ii) the legal and other fees and expenses of the Company, and (iii) the legal and other expenses of any consenter or other third party in connection with the grant of the Land Rights.
- The Company reserves the rights not to install the Works on contaminated land. Where contamination is found by or becomes known to the Company, additional charges may be rendered to the Customer in accordance with Condition 4.
- The Customer will, at no cost to the Company and to a satisfactory standard reasonably specified by the Company, be responsible for carrying out all on site cable trenching for services, LV and HV mains cable, other than within substation sites and for backfilling and trench reinstatement once the Company has laid and covered the aforesaid cabling.
- The Customer will be responsible for all building costs associated with the supply intake and any meter cabinets.
- The Customer will provide service termination facilities, in a position acceptable to the Company.
- The Company shall be entitled to terminate the contract constituted by your acceptance of the Agreement by written notice to you, at any time following the expiry of the period specified in the Quotation, if the works referred to in the Quotation have not commenced or did commence but subsequently ceased and such delay in commencing or completing the works is not attributable to the act or omission of the Company. If the Company terminates before commitment or commencement of the works referred to in the Quotation and/or any associated tasks, the Company will return any sums paid to us minus administration costs. If the Company terminates before completion of the works referred to in the Quotation but after commitment or commencement of any associated tasks, the Customer will be liable for any reasonable charges for the work done or committed and materials purchased prior to termination and any costs or expense incurred in relation to obtaining any wayleaves or consents or other such land rights. The Company will be entitled to deduct such amounts, together with administration costs from any sums paid to us.
- The Offer is subject to the Company obtaining all required Land Rights and statutory consents for carrying out the Works. Unless otherwise stated the Offer assumes that all plant and equipment will be placed in the adopted public highway or land owned or controlled by the Customer who will provide all Land Rights in accordance with Condition 5. The Customer will pay the full cost of obtaining any Land Rights required from third parties (including settlement of all properly reimbursed claims thereunder) in addition to the charges identified in the Quotation provided that where these have a significant impact on the overall cost the Customer shall be entitled to terminate the contract upon written notice to the Company. In the event of termination the Customer shall pay the Company's reasonable charges for the work done or committed and materials purchased prior thereto and reimburse any costs or expense incurred or committed by the Company in obtaining any Land Rights.
- It is assumed that the Company will carry out all Works during normal working hours. There will be an additional charge for any overtime working at the Customer's request.
- The Quotation is based on material and labour costs prevailing at the date of the Offer Letter. The Company shall have the right to vary the Quotation in accordance with any variations in the material or labour costs subsequent to the date of the Offer Letter (unless otherwise stated in the Offer Letter) upon submitting written details of the additional cost to the Customer who shall be entitled to terminate the contract upon giving the Company written notice within 5 working days of the date of submission of such details. In the event of termination the Customer shall pay the Company's reasonable charges for the work done or committed and materials purchased prior thereto and reimburse any costs or expense incurred or committed by the Company in obtaining any Land Rights.
- Unless otherwise agreed the Company requires full payment of the amount due on acceptance 30 days prior to commencement of the Works. All other arrangements will be subject to status.
- The Company may submit progress invoices to the Customer, in respect of the amount of labour expended and materials delivered to site and the Company's stores up to the date of the progress invoice.
- Adjustments will be made to the rates of VAT to those applicable at the date of invoice or payment, whichever is the earlier.

Inverlmond House, 200 Dunkeld Road, Perth PH1 3AQ  **sssen.co.uk**

Scottish and Southern Electricity Networks is a trading name of: Scottish and Southern Energy Power Distribution Limited Registered in Scotland No. SC213459;  
Scottish Hydro Electric Transmission plc Registered in Scotland No. SC213461; Scottish Hydro Electric Power Distribution plc Registered in Scotland No. SC213460;  
(all having their Registered Offices at Inverlmond House 200 Dunkeld Road Perth PH1 3AQ); and Southern Electric Power Distribution plc Registered in England & Wales  
No. 04094290 having its Registered Office at No.1 Forbury Place, 43 Forbury Road, Reading, RG1 3JH which are members of the SSE Group [www.ssen.co.uk](http://www.ssen.co.uk)

The Company's Standard Terms and Conditions

Definitions:

The "Company":	Shall mean either Scottish Hydro Electric Power Distribution plc or Southern Electric Power Distribution plc as specified in the Offer Letter;
The "Adoption Agreement":	The agreement between the Customer and the Company for adoption of any Contestable Connection Works undertaken by the Customer;
The "Agreement":	The agreement constituted by the Offer and the Customer's acceptance and any permitted variation from time to time;
The "Agreement Date":	The date of the Customer's acceptance of the Offer;
The "Company's Requirements":	The Company's technical requirements as set out on the Website and the Offer;
The "Connection Agreement":	The agreement between the Company and the Customer relating to the connection of the Customer's premises;
"Consumer":	Means an individual acting for purposes which are wholly or mainly outside the individual's trade, business, craft or profession;
"Consumer Terms and Conditions":	Means the Supplementary Consumer Terms and Conditions attached to these Standard Terms and Conditions;
The "Contestable Connection Works":	The part of the Works that the Customer may elect to undertake or appoint an appropriate third party to undertake;
The "Cost Apportionment Contribution":	A financial contribution made with respect to the costs of connection from the Company in favour of the Customer;
The "Customer":	The person, firm or company whose name and address is shown in the Offer Letter;
The "Equipment":	The equipment, plant and/ or apparatus the Company will supply as detailed in the Offer Letter;
The "Land Rights":	Means rights in, under or over land for the construction, installation, operation, repair, maintenance, renewal or use of the Contestable Connection Works and/or the Works;
The "Land Rights Criteria":	The criteria as set out on the Website providing the Company's requirements for Land Rights;
The "Offer":	These standard terms and conditions and the Offer Letter;
The "Offer Letter":	The letter and attached pages sent to the Customer by the Company setting out details of the Works, the Quotation and other matters relating to the connection;
The "Quotation":	The Quotation for the Works as set out in the Offer Letter;
The "Information Pack":	The customer site requirements document supplied with the Offer;
The "Website":	The website at <a href="http://www.ssen.co.uk">www.ssen.co.uk</a> or at such other domain name as the Company may use from time to time;
The "Works":	The works that the Company will carry out as detailed in the Offer; and
"Second Corner Charge":	Means any amounts payable by the Customer pursuant to The Electricity (Connection Charges) Regulations 2002 or Electricity (Connection Charges) Regulations 2017 as applicable.

18. The Company will issue a further invoice to the Customer on completion of the electrical works in respect of the Second Corner Charge.
19. The Customer must settle invoices within 30 days of the date of the invoice.
20. If any amount remains unpaid after the due date, the Company shall (in addition to any other remedies) be entitled to charge interest on the amount unpaid at the annual rate of 3% over the base rate of the Bank of England from the due date to the date of payment in full.
21. The Company reserves the right to require that the Customer provides security for any payment which may become due pursuant to this Offer and/or section 19 of the Electricity Act 1989. The Company may automatically apply any such security in cash against any such sums as they become due.
22. Unless otherwise agreed in writing by the Company time is not of the essence in relation to the Company's Works.
23. The Company shall have no liability to the Customer whether in contract, tort or delict (including negligence), for breach of statutory duty, or otherwise arising under or in connection with this Agreement for any indirect or consequential loss, any loss of profit, revenue, generation, business, savings, (anticipated or otherwise) or any other form of economic loss (whether or not occurring in connection with physical damage) provided that this Condition 20 shall not exclude or restrict the liability of the Company for death or personal injury or any other liability which cannot be limited or excluded by applicable law.
24. The Company's liability under or in connection with this Agreement shall be limited to £1 million in the aggregate. This limit shall apply however that liability arises, including, without limitation, a liability arising by breach of contract, arising by tort or delict (including negligence) or arising by breach of statutory duty provided that this Condition 21 shall not exclude or restrict the liability of the Company for death or personal injury or any other liability which cannot be limited or excluded by applicable law.
25. The Customer acknowledges and confirms that it does not enter into the Agreement in reliance on any oral representation, warranty or undertaking not fully reflected in the terms of the Agreement and that no amendment, modification or substitution to the Agreement shall be effective unless executed in writing by both parties.
26. The Equipment shall at all times remain the property of the Company. On completion of the Works and, with respect to any Contestable Connection Works undertaken by the Customer, the Customer both satisfactorily completing any Contestable Connection Works and an Adoption Agreement with the Company covering the Contestable Connection Works, the whole of the Works, Equipment and the aforesaid Contestable Connection Works shall become the property of the Company. The Customer shall protect the Equipment from any damage or interference between delivery to the site and completion of the Works and shall indemnify the Company for any loss or damage to the Equipment during such period. The Company shall be responsible for the final connection of the Works to its distribution system.
27. The Quotation is net of any Cost Apportionment Contribution due to the Customer and no further contributions or allowances are applicable. The value of the Cost Apportionment Contribution has been calculated on the basis of, inter alia, the Equipment specified in the Offer Letter, the available capacity agreed for the development, the build rate and the electrical heating the Customer has declared will be installed. The value of Cost Apportionment Contribution made in favour of the Customer by the Company will be indicated in the attached Quotation and its value may be recalculated by the Company to reflect any alteration to the basis of the calculation and the Customer will refund any excess Cost Apportionment Contribution made by the Company upon demand. The Customer shall be liable to pay to the Company the full value of the Cost Apportionment Contribution received from the Company in the event this Agreement is terminated prior to the completion of the Connection. In such event, the Customer shall be liable to pay to the Company a proportion (to be determined by the Company) of the Cost Apportionment Contribution.
28. It is a condition of the Offer that the Customer **or the end customer who will be responsible for the associated charges** shall (where applicable) enter into a Connection Agreement with the Company prior to energisation of the Connection.
29. The Customer will carry out the site work specified in the Information Pack (Site Requirements Schedule document).

Inverlmond House, 200 Dunkeld Road, Perth PH1 3AQ  **sssen.co.uk**

Scottish and Southern Electricity Networks is a trading name of: Scottish and Southern Energy Power Distribution Limited Registered in Scotland No. SC213459;  
Scottish Hydro Electric Transmission plc Registered in Scotland No. SC213461; Scottish Hydro Electric Power Distribution plc Registered in Scotland No. SC213460;  
(all having their Registered Offices at Inverlmond House 200 Dunkeld Road Perth PH1 3AQ); and Southern Electric Power Distribution plc Registered in England & Wales  
No. 04094290 having its Registered Office at No.1 Forbury Place, 43 Forbury Road, Reading, RG1 3JH which are members of the SSE Group [www.ssen.co.uk](http://www.ssen.co.uk)



## Supplementary Consumer Terms and Conditions

### 1. Application of these Terms and Conditions

These Supplementary Consumer Terms and Conditions apply to an Offer issued by Southern Electric Power Distribution plc to a consumer. Where applicable these Supplementary Consumer Terms and Conditions shall be incorporated into the terms of the Offer and where inconsistent with any term of the Offer, these Supplementary Consumer Terms and Conditions shall prevail.

### 2. Right to Cancel

You have the right to cancel your contract with us within 14 days of us receiving your acceptance without giving any reason. The cancellation period will expire after 14 days from the day we receive your acceptance. This right is in addition to any other right to cancel that you have under our standard terms and conditions.

To exercise the right to cancel, you must inform us of your decision to cancel this contract by a clear statement (e.g. a letter sent by post or e-mail). You may use the attached model cancellation form, but it is not obligatory.

To meet the cancellation deadline, it is sufficient for you to send your communication concerning your exercise of the right to cancel before the cancellation period has expired.

### 3. Effect of Cancellation

If you cancel the contract in accordance with paragraph 2 above, we will reimburse to you all payments received from you.

We will make the reimbursement without undue delay, and not later than 14 days after the day on which we are informed about your decision to cancel the contract.

We will make the reimbursement using the same means of payment as you used for payment, unless you have expressly agreed otherwise; in any event, you will not incur any fees as a result of the reimbursement.

If you requested that we begin the performance of works during the cancellation period, you shall pay us an amount which is in proportion to what has been performed prior to your cancellation of the contract, in comparison with the full works provided for in the contract.

**MODEL CANCELLATION FORM**

*(Complete and return this form only if you wish to withdraw from the contract)*

To: Connections And Engineering  
Walton Park  
Walton Road  
Cosham  
PO6 1UJ  
[connections@sse.com](mailto:connections@sse.com)

I/We [\*] hereby give notice that I/We [\*] cancel my/our [\*] contract for the supply of the following service [\*\*],

Offer accepted on [\*\*],

Name of customer(s),

Address of customer(s),

Signature of customer(s) (only if this form is notified on paper),

Date

[\*] Delete as appropriate

[\*\*] Populate as appropriate



## Detailed Cost Breakdown

*Please note that due to rounding within the calculation of the Breakdown of Charges which forms part of this Offer, the total shown below may differ slightly from the "Total charge to applicant" amount in the Offer Letter. For the avoidance of doubt the "Total charge to applicant" figure in the Offer Letter reflects our detailed forecast and calculations and is the accurate figure. It is the amount we need to receive before we can schedule works.*

*This does not form part of our Offer and is not legally binding.*

## Job Details

Job Reference	ETP363
Version	2

## Estimate Summary List

Section Qty.	Non-Contestable Works: Final Connection Description	Voltage	Cost (£)
1	JT.03.01 - 100A 1 Phase off Main	LV	£1,044.99
1	JT.01.02 - LV Mains Pot End	LV	£245.57
1	JT.01.03 - LV Mains Breeches Joint	LV	£762.92
10	95mm Wavecon 4 core	LV	£144.06
15	240mm XLPE	HV	£324.66
4	SD.01.02 - HV shutdown	HV	£16,805.66
6	JB.01.03.02-HV straight/Pot end - Footway (all types)	HV	£8,483.50
13	TR.01.08.02 - HV Single 3 core cable - Footway (all Type)	HV	£2,478.66
8	JT.04.01 - HV Straight Joint	HV	£7,196.22
1	Auto-changeover scheme	11kV Plant	£21,000.00
1	Communications installation	11kV Plant	£14,000.00
1	EHV network @ level 3	EHV	£315.00
1	Design Approval GEN/DEM EHV/132	EHV	£1,575.00
1	Connection Offer Expenses EHV Demand Non-Contestable	EHVPOC	£2,072.00
1	Final legal paperwork for Wayleaves/Legals	Wayleaves	£450.00
2	PL.02.02-Automate New S/S	Installation Costs	£6,700.06
9	TR.05.04 - LV mains lay & blind - issue marker tape	Lay & Blind	£192.28
2	PL.01.17-Dismantle 11kV Substation (Non-unit)	Dismantlement	£10,538.84
2	PL.01.19-Dismantle GRP enclosure	Dismantlement	£4,826.61
2	PL.01.15-Dismantle 11kV Switchgear	Dismantlement	£3,462.76
50	11kV - S'BRD - Excavations within substation (600mm wide tre	11kV plant	£70,000.01
2	11kV - S'BRD - RTU T100 (for new metering substation)	11kV plant	£30,800.00
2	11kV - S'BRD - Cable Termination (incl pressure test)	11kV plant	£22,400.00
2	11kV - S'BRD - Feeder outage (Count existing on the same sec	11kV plant	£2,800.00
1	SD.01.04 - Deliver Shutdown cards (1 to 49)	Misc	£297.68
3	Padlocks (Operational) South	Misc	£664.61
<b>Total (£)</b>			<b>£229,581.10</b>

Section Description	Non-Contestable Works: Other	Cost (£)
Other Cost - Rebate		£0.00
Other Cost - 2nd Comer		£0.00
Other Cost - Operation and maintenance costs for assets over and above the minimum scheme		£593,280.10
Other Cost - High Cost O & M		£0.00
<b>Total (£)</b>		<b>£593,280.10</b>
<b>DNO Costs (£)</b>		<b>£0.00</b>
<b>Customer Costs (£)</b>		<b>£822,861.30</b>

<b>Totals</b>	<b>Cost(£)</b>
Contestable Total	£0.00
Non-Contestable Total	£822,861.30

For an explanation of the technical terms or abbreviations used in the above cost breakdown please visit our website [www.ssen.co.uk/connections/abbreviations](http://www.ssen.co.uk/connections/abbreviations)

Stannard, Paul

---

From: ssep.d.no.reply@sse.com  
Sent: 03 December 2021 00:40  
To: Craig Hamilton  
Subject: Your application with SSEN - Quotation Acceptance



---

## Confirmation from SSEN - application Accepted

---

Dear Craig Hamilton,

Thank you for accepting our quotation ETP363.

I am pleased to confirm the following key contacts for the grid connection at HILLINGDON HOSPITAL, PIELD HEATH ROAD, UXBRIDGE

You may have spoken to some of our colleagues already and be aware of the role they will play in your connection, but we want to make sure you are fully supported through out the delivery of your connection and know who to contact if you have any questions.

Please see details below of who to contact if you require any further information or assistance in relation to your connection.

To assist you with more technical/design aspects at the beginning of the connection, contact Jennifer Slack System planner - jennifer.slack@sse.com, 0118 912 6633

To assist you with all aspects of scheduling and delivering/constructing the connection right up to energising, contact Sean Keogh, Construction/Delivery manager - sean.keogh@sse.com, 01753 695611.

To provide you with information on the land rights required by Scottish and Southern Electricity Networks and the process for acquiring those for your electricity connection, contact Christopher Sutton, Wayleaves Officer - christopher.sutton@sse.com, .

I hope you find this information helpful. Our team are happy to assist you through the connection process and will be available for meetings to discuss any queries you may have about your connection delivery.

All our staff are trained to offer you the best possible customer service and will do their best to help you. However should you have a complaint, please in the first instance contact your Commercial Contract Manager as detailed above. A copy of our Complaints Handling Process can be accessed here. <https://www.ssen.co.uk/Complaints/>

This email is automated so you cannot reply to it. If you have any questions, please contact the relevant person as detailed above. Connections and Engineering

0800 0483516

Walton Park, Walton Road, Cosham, Portsmouth, PO6 1UJ



The information in this email is confidential and may be legally privileged. It may not represent the views of the SSE Group. It is intended solely for the addressees. Access to this email by anyone else is unauthorised. If you are not the intended recipient, any disclosure, copying, distribution or any action taken or omitted to be taken in reliance on it, is prohibited and may be unlawful. Any unauthorised recipient should advise the sender immediately of the error in transmission.

Unless specifically stated otherwise this email (or any attachments to it) is not an offer capable of acceptance or acceptance of an offer and it does not form part of a binding contractual agreement.

Scottish and Southern Electricity Networks is a trading name of: Scottish and Southern Energy Power Distribution Limited Registered in Scotland No. SC213459; Scottish Hydro Electric Transmission plc Registered in Scotland No. SC213461; Scottish Hydro Electric Power Distribution plc Registered in Scotland No. SC213460; (all having their Registered Offices at Inveralmond House 200 Dunkeld Road Perth PH1 3AQ); and Southern Electric Power Distribution plc Registered in England & Wales No. 04094290 having its Registered Office at No 1 Forbury Place, 43 Forbury Road, Reading, RG1 3JH which are members of the SSE Group

[www.ssen.co.uk](http://www.ssen.co.uk)

---

The information in this email is confidential and may be legally privileged. It may not represent the views of the SSE Group. It is intended solely for the addressees. Access to this email by anyone else is unauthorised. If you are not the intended recipient, any disclosure, copying, distribution or any action taken or omitted to be taken in reliance on it, is prohibited and may be unlawful. Any unauthorised recipient should advise the sender immediately of the error in transmission. Unless specifically stated otherwise, this email (or any attachments to it) is not an offer capable of acceptance or acceptance of an offer and it does not form part of a binding contractual agreement.

SSE plc

Registered Office: Inveralmond House 200 Dunkeld Road Perth PH1 3AQ

Registered in Scotland No. SC117119

[www.sse.com](http://www.sse.com)