

## 6.10 Indicative Planting Palette

### Bulb Planting



### Indicative Planting

- *Narcissus obvallaris*
- *Narcissus pseudonarcissus*
- *Galanthus nivalis*
- *Muscari armeniacum*

### Outline Planting Specification

Grade 10/12 bulbs @ 75 bulbs per sqm  
Grass seeding sowing rate 4g/m<sup>2</sup>

### Indicative Grass Seed Mixes

- General purposes meadow mixture
- Wetland meadow mixture



# 6.10 Indicative Planting Palette

## Grasses, Ferns - within Mixed Planting



### Indicative Planting

- *Athyrium filix-femina*
- *Avenula pratensis*
- *Blechnum spicant*
- *Carex elata*
- *Carex oshimensis*
- *Deschampsia cespitosa* varieties
- *Dryopteris filix-mas*
- *Festuca glauca*
- *Miscanthus sinensis* varieties
- *Molinia caerulea arundinacea*
- *Pennisetum alopecuroides* varieties
- *Pennisetum orientale*
- *Pennisetum thunbergii*
- *Polystichum setiferum*
- *Stipa arundinacea*
- *Stipa calamagrostis*
- *Stipa gigantea*
- *Stipa tenuissima*

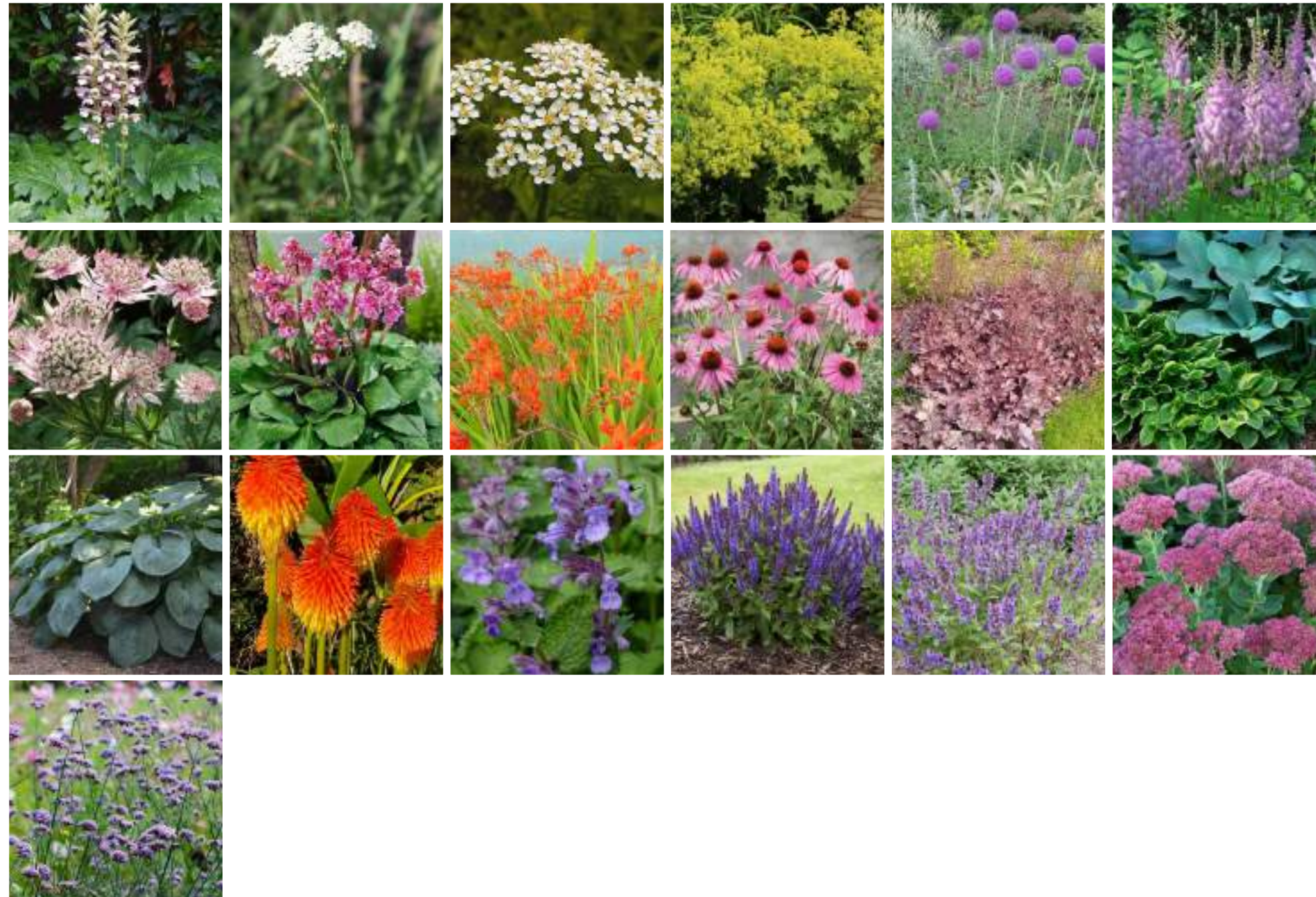
### Outline Planting Specification

Plant in 3-5 litre containers @ 3-4 plants per sqm



## 6.10 Indicative Planting Palette

### Herbaceous Planting - within Mixed Planting



#### Indicative Planting

- Acanthus mollis
- Achillea
- Achillea millefolium
- Alchemilla mollis
- Allium giganteum
- Astilbe
- Astrantia major
- Bergenia cordifolia varieties
- Crocosmia
- Echinacea purpurea varieties
- Heuchera micrantha
- Hosta
- Hosta sieboldiana elegans
- Kniphofia rooper
- Nepeta racemose
- Salvia nemorosa
- Salvia officinalis
- Sedum
- Verbena bonariensis

---

#### Outline Planting Specification

2-3 litre container planting @ 3-4 per sqm



# 6.10 Indicative Planting Palette

## Native Planting Mix



### Indicative Planting

- Cornus sanguinea
- Ilex aquifolium varieties
- Prunus spinosa
- Rosa canina
- Sambucus nigra
- Viburnum opulus

### Outline Planting Specification

Plants in 3 litres containers planted at 1-3 plants per sqm



# 6.10 Indicative Planting Palette

## Native Trees



### Indicative Planting

- *Acer campestre*
- *Alnus glutinosa*
- *Carpinus betulus*
- *Corylus avellana*
- *Malus sylvestris*
- *Pinus sylvestris*
- *Prunus avium*
- *Quercus ilex*
- *Quercus robur*
- *Salix fragilis*
- *Sorbus aucuparia*
- *Tilia cordata*

### Outline Planting Specification

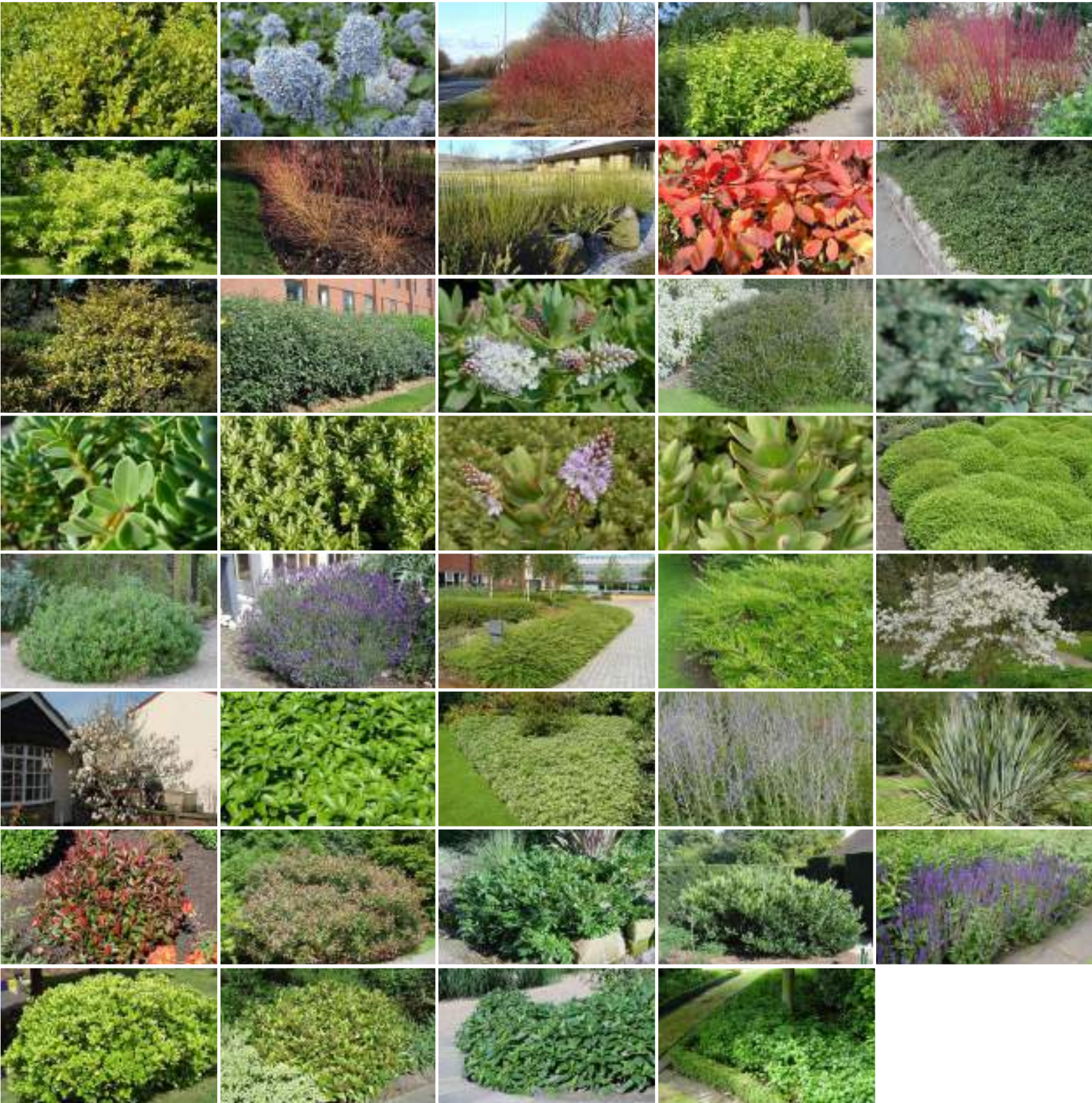
Proposed trees sizes to be a mix of Extra Heavy Standard (Extra Heavy Standard (16-18cm,18-20cm girth), Semi Mature (20-25cm girth) and Multi Stem varieties all Rootballed.

Trees to be fixed with a combination of above ground double timber tree stakes and below ground tree guying system.



# 6.10 Indicative Planting Palette

## Ornamental Shrubs - Mixed Planting



### Indicative Planting

- Buxus sempervirens
- Ceanothus thyrsiflorus repens
- Cornus alba varieties
- Cotinus
- Cotoneaster dammeri
- Elaeagnus pungens
- Elaeagnus x ebbingei
- Hebe albicans
- Hebe pinguifolia varieties
- Hebe x franciscana
- Lavandula angustifolia
- Lonicera nitida
- Lonicera pileata
- Magnolia stellata
- Magnolia x soulangeana
- Pachysandra varieties
- Perovskia
- Phormium tenax
- Photinia x fraseri with various species
- Prunus laurocerasus with various species
- Salvia x sylvestris
- Skimmia varieties
- Viburnum davidii
- Vinca major

### Outline Planting Specification

Plant in 3-5 litre containers @ 3-6 plants per sqm



## 6.10 Indicative Planting Palette

### Ornamental Trees



### Indicative Planting

- Acer campestre varieties
- Acer platanoides
- Amelanchier lamarckii
- Betula utilis jacquemontii
- Carpinus betulus 'Frans Fontaine'
- Carpinus betulus 'Fastigiata'
- Fagus sylvatica
- Liquidamber formosana
- Prunus Accolade
- Prunus padus
- Prunus Spire
- Prunus serrula tibetica
- Prunus x subhirtella
- Quercus robur
- Sorbus aria Lutescens
- Sorbus aria Majestica

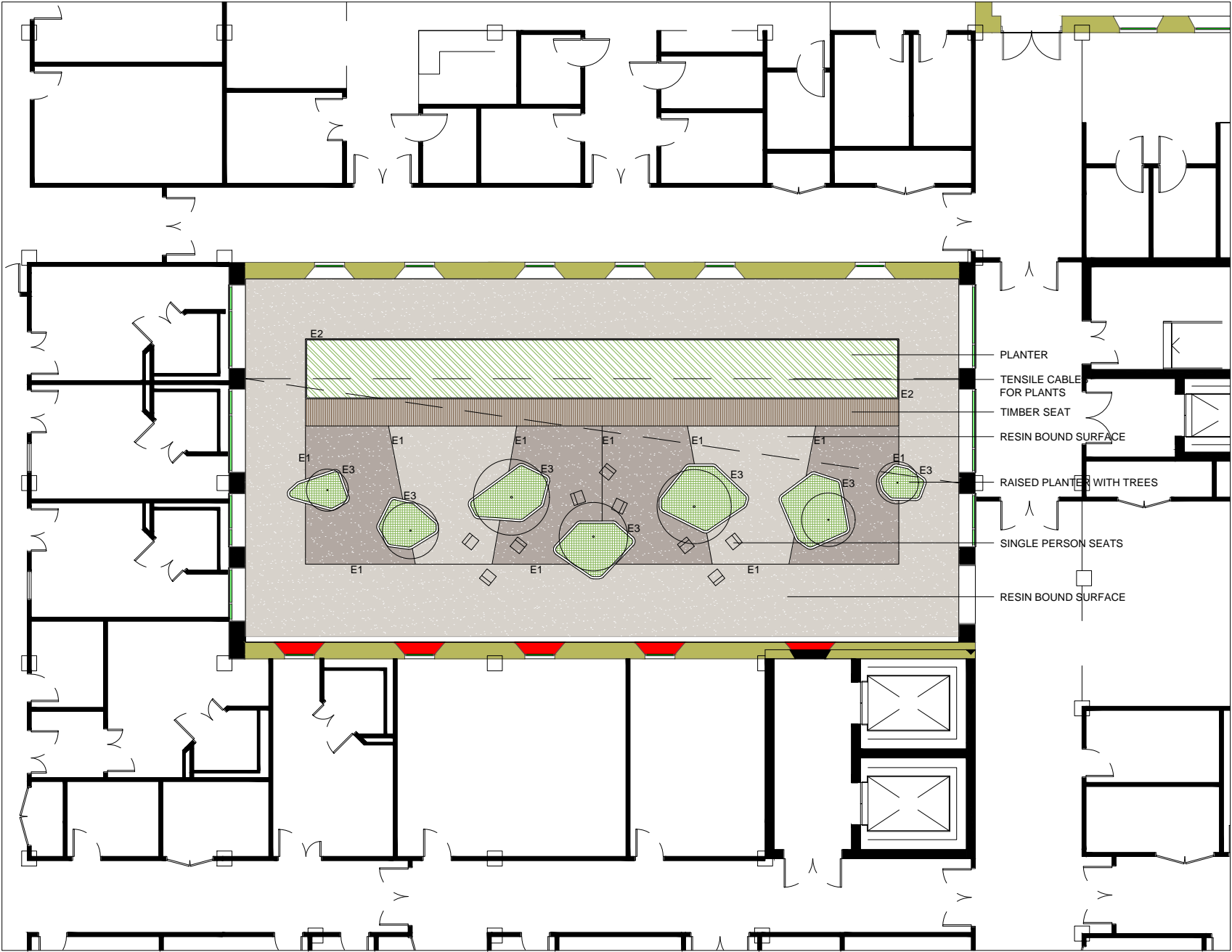
### Outline Planting Specification

Proposed trees sizes to be a mix of Extra Heavy Standard (Extra Heavy Standard (16-18cm,18-20cm girth), Semi Mature (20-25cm girth) and Multi Stem varieties all Rootballed.

Trees to be fixed with a combination of above ground double timber tree stakes and below ground tree guying system.  
Trees in hard paving areas to have an underground tree pit cell system.



# 6.11 Level 0 Internal Courtyard



- E1** PROPOSED FLUSH METAL EDGE  
MATERIAL: ALLUMINIUM
- E2** PROPOSED RAISED METAL PLANTER 450MM HIGH  
MATERIAL: STEEL  
FINISH: POWDER COATED (COLOUR TBC)
- E3** PROPOSED RAISED METAL PLANTER 1000MM HIGH  
MATERIAL: STEEL  
FINISH: POWDER COATED (COLOUR TBC)
- PROPOSED PERMEABLE RESIN BOUND GRAVEL  
MATERIAL: 6MM NATURAL AGGREGATE  
COLOUR: 'WHITE'
- PROPOSED PERMEABLE RESIN BOUND GRAVEL  
MATERIAL: 6MM NATURAL AGGREGATE  
COLOUR: 'SILVER GREY'
- PROPOSED BENCH SEATS  
MATERIAL: TIMBER SLATS
- PROPOSED SEATS  
MATERIAL: TBC
- PROPOSED AMENITY PLANTING  
PLANTING TYPOLOGY 3  
SEE DAS FOR INDICATIVE SPECIES
- PROPOSED SPECIMEN TREES  
MIN. 16-18CM GIRTH AT PLANTING  
UNDERGROUND GUYED BACK TO PLANTER

- Landscape Design Intent**
- Level 00 Internal Courtyard**
- Tensile cable for climbing plants to create overhead interest
  - Raised metal planters at various heights with shade tolerant tree and shrub planting
  - Mix of linear timber slatted bench and individual seats



RESIN BOUND GRAVEL



RESIN BOUND GRAVEL



FLUSH ALUMINIUM EDGE



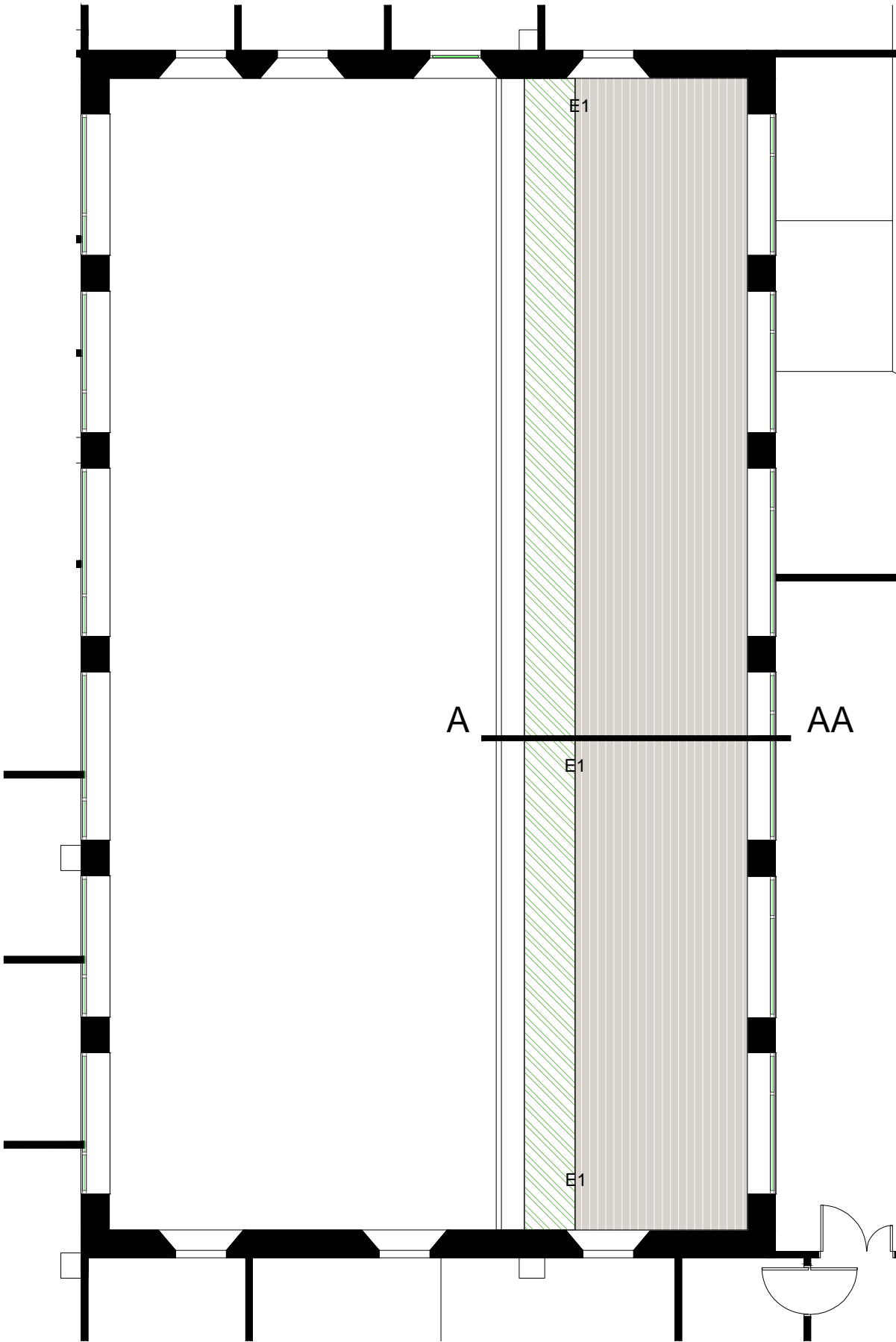
TIMBER BENCH



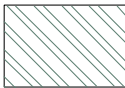


TIMBER BENCH



# 6.12 Level 1 Internal Courtyard

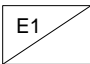





-  PROPOSED FLUSH METAL EDGE  
MATERIAL: ALLUMINIUM  
FINISH: AS MANUFACTURED
-  PROPOSED COMPOSITE DECK SYSTEM  
MATERIAL: COMPOSITE  
COLOUR: OAK FINISH
-  PROPOSED AMENITY PLANTING  
PLANTING TYPOLOGY 1  
SEE DAS FOR INDICATIVE SPECIES



# 6.13 Level 2 Terrace External Works



-  PROPOSED RAISED METAL PLANTER 1000MM HIGH  
MATERIAL: STEEL  
FINISH: POWDER COATED (COLOUR TBC)
-  PROPOSED PEDESTAL PAVING SYSTEM  
MATERIAL: CONCRETE FLAG 450MM X 450MM X 50MM  
COLOUR: NATURAL
-  PROPOSED BALLAST ROOF SYSTEM  
SUPPLIER AND PRODUCT TBC
-  PROPOSED AMENITY PLANTING  
PLANTING TYPOLOGY VARIES  
SEE DAS FOR INDICATIVE SPECIES

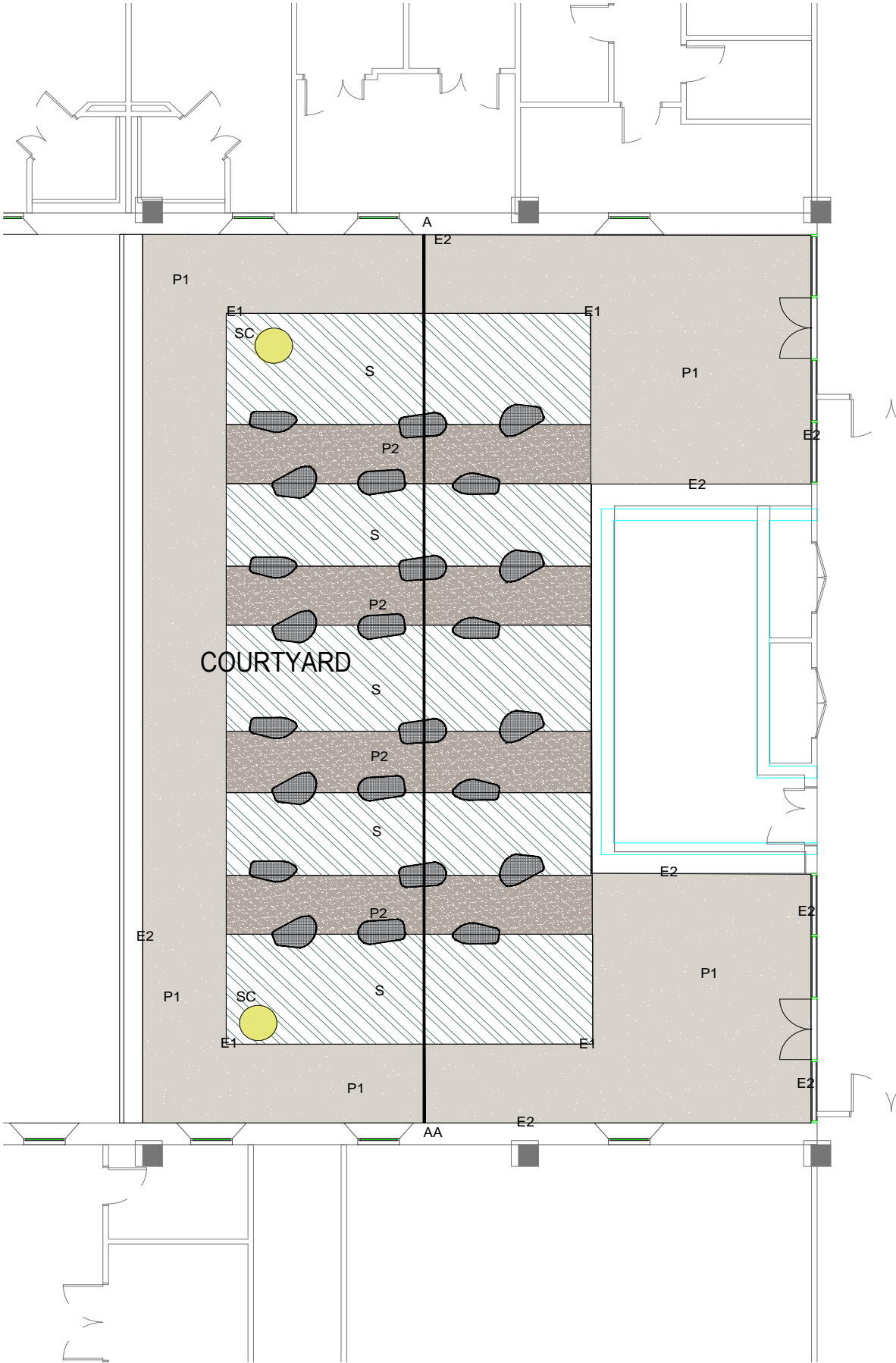
## Landscape Design Intent

### Level 02 Terrace

- Maintenance access only
- Raised metal planter to roof perimeter with amenity shrub planting
- Concrete slab paving on pedestal system to perimeter of raised planter for maintenance access



# 6.14 Level 2 Terrace External Works



P1

Resin Bound Gravel

P2

Gravel / Boulders

S

Shrub Planting with 300mm depth topsoil

SC

Sculpture Feature 3No.

E1

Steel Edging

E2

PCC Flush Pin Kerb

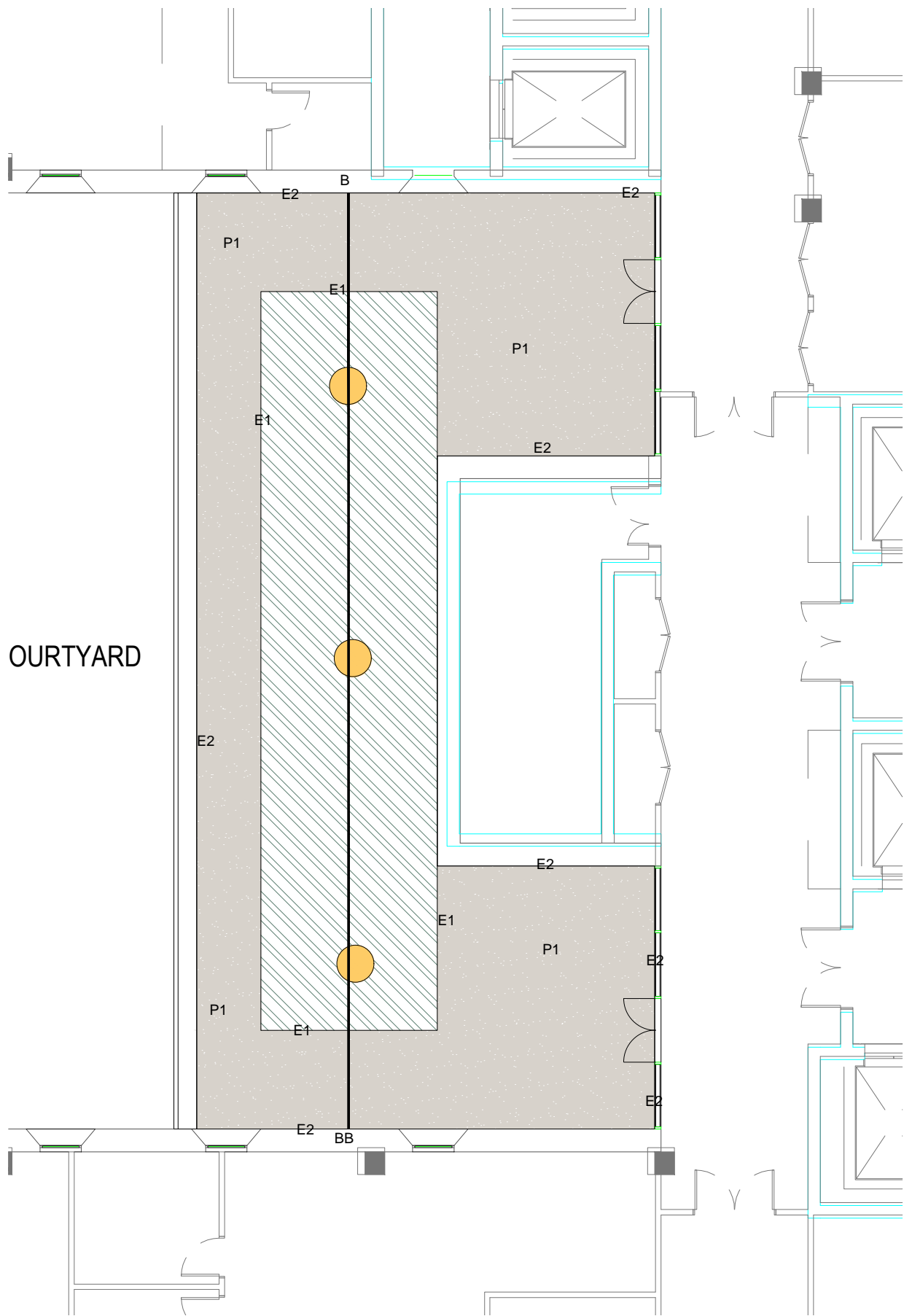
## Landscape Design Intent

### Level 02 Terrace

- Maintenance access only
- Resin bound gravel to the perimeter
- Gravel/Boulders mixed with ornamental shrub planting beds
- Sculptural features set within the ornamental planting



# 6.15 Level 2 Terrace External Works



- Terrace - Private Access
- Terrace - Public Access
- P1 Resin Bound Gravel
- P2 Gravel / Boulders
- S Shrub Planting with 300mm depth topsoil
- SC Sculpture Feature 3No.
- E1 Steel Edging
- E2 PCC Flush Pin Kerb

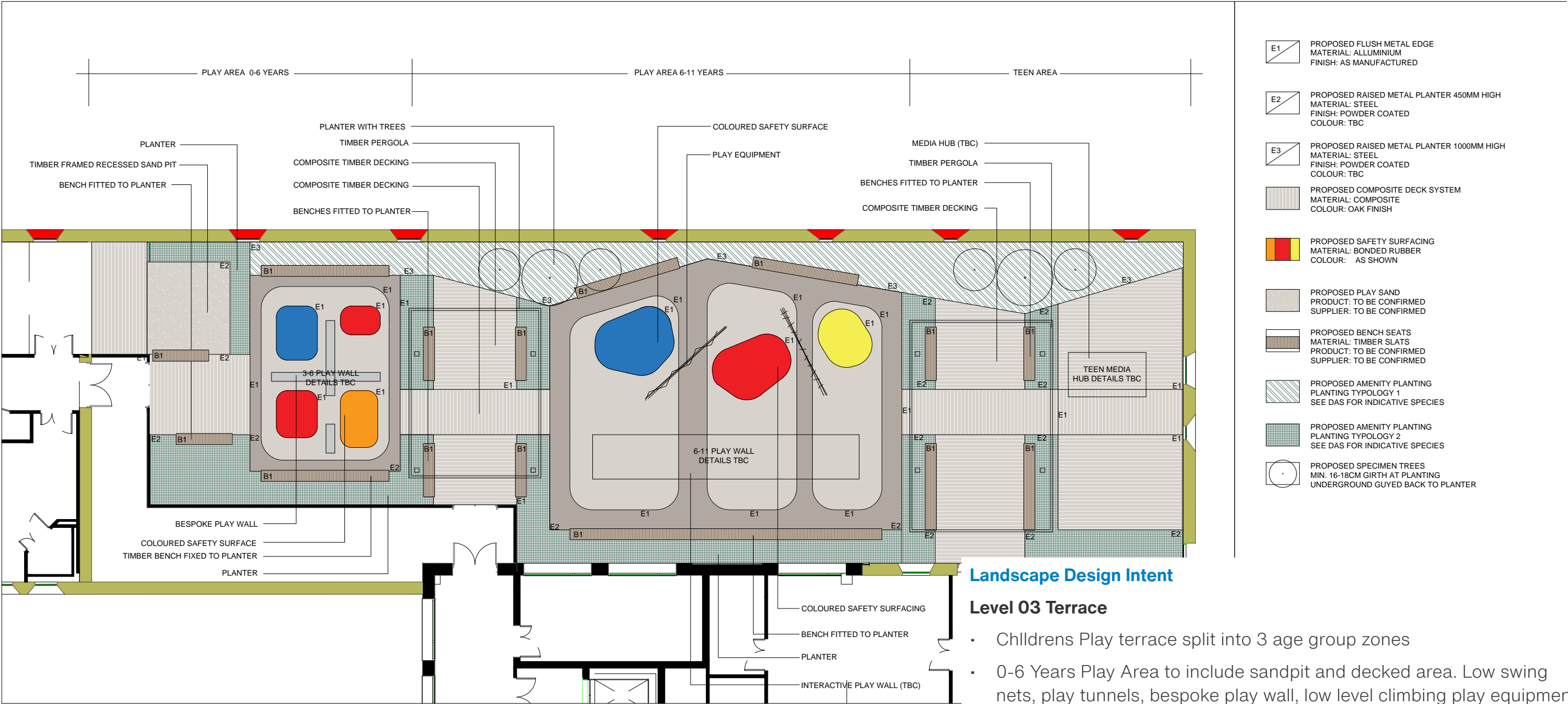
## Landscape Design Intent

### Level 02 Terrace

- Maintenance access only
- Resin bound gravel to the perimeter
- Sculptural features set within the ornamental planting



# 6.16 Level 3 Terrace External Works



## Landscape Design Intent

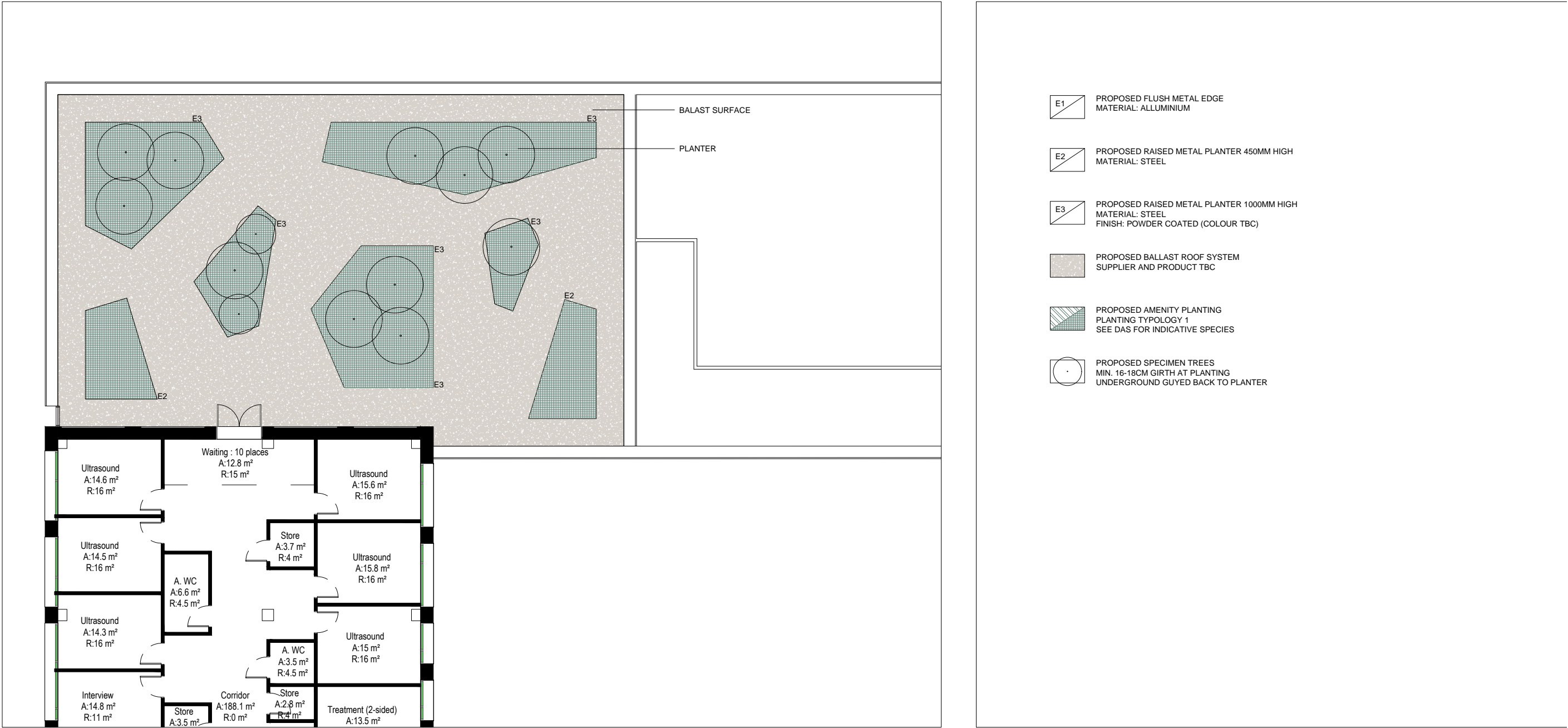
### Level 03 Terrace

- Childrens Play terrace split into 3 age group zones
- 0-6 Years Play Area to include sandpit and decked area. Low swing nets, play tunnels, bespoke play wall, low level climbing play equipment set within rubber safety surfacing
- 6-11 Years Play Area to include bespoke play wall, climbing play equipment, frames, nets, climbing walls, chalkboard, ropes and rings.
- 11 Years + teenage area with bespoke media hub enclosure with power connections for laptops/games consoles, use of large outdoor beanbags and outdoor furniture including sofas and tables within a separate outdoor room enclosed by amenity shrub planting
- 1m high raised metal planter to the north perimeter of the terrace with a mix amenity shrub and specimen trees to provide some enclosure and a relaxing green setting to the separate play zones.





# 6.17 Level 4 Terrace External Works



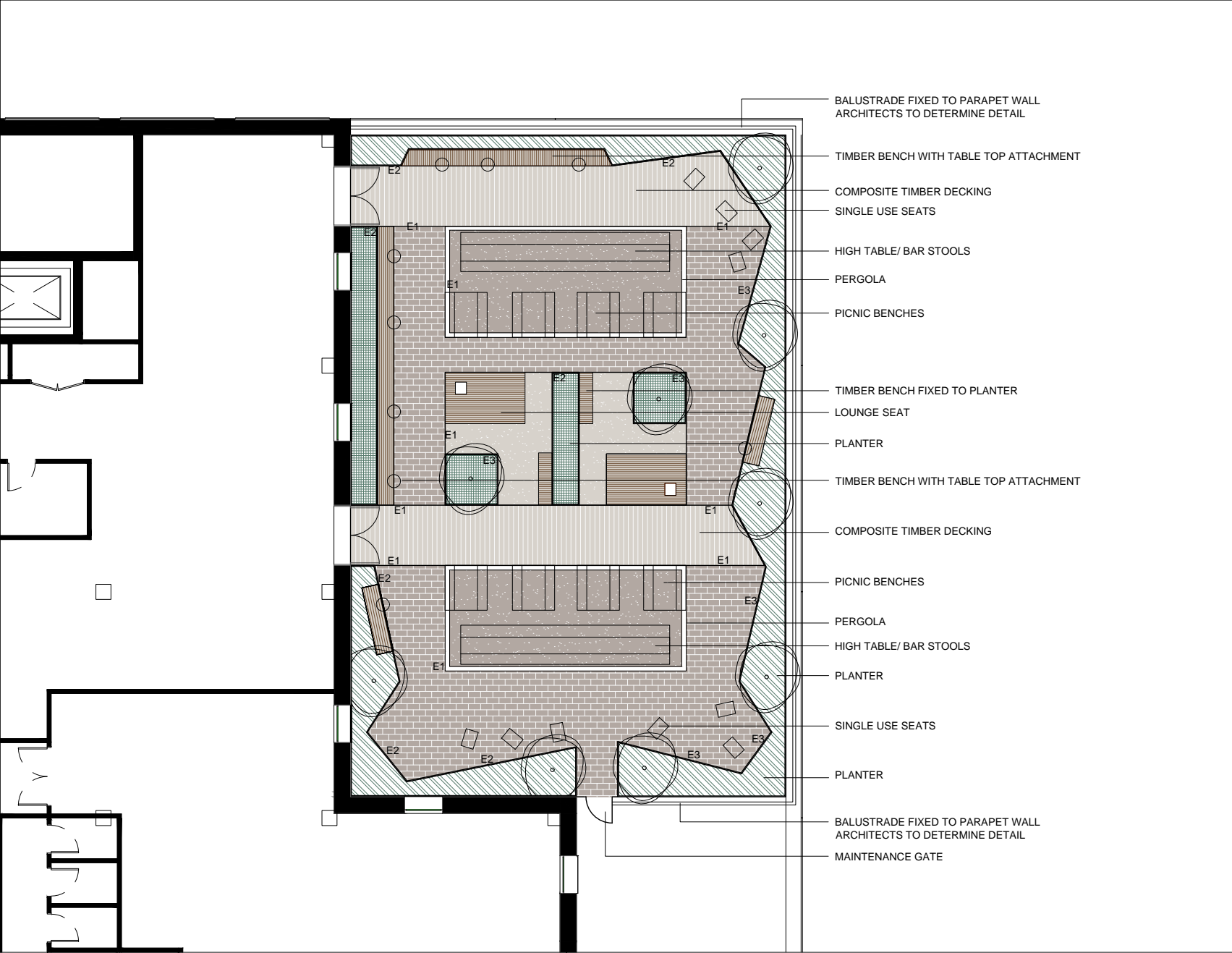
## Landscape Design Intent

### Level 04 Terrace

- Maintenance access only, visual roof terrace
- Raised metal planter at various heights with a mix of amenity shrub planting and specimen trees
- Ballast roof system for surrounding hard surface areas



# 6.18 Level 6 Terrace External Works



## Landscape Design Intent

### Level 06 Terrace

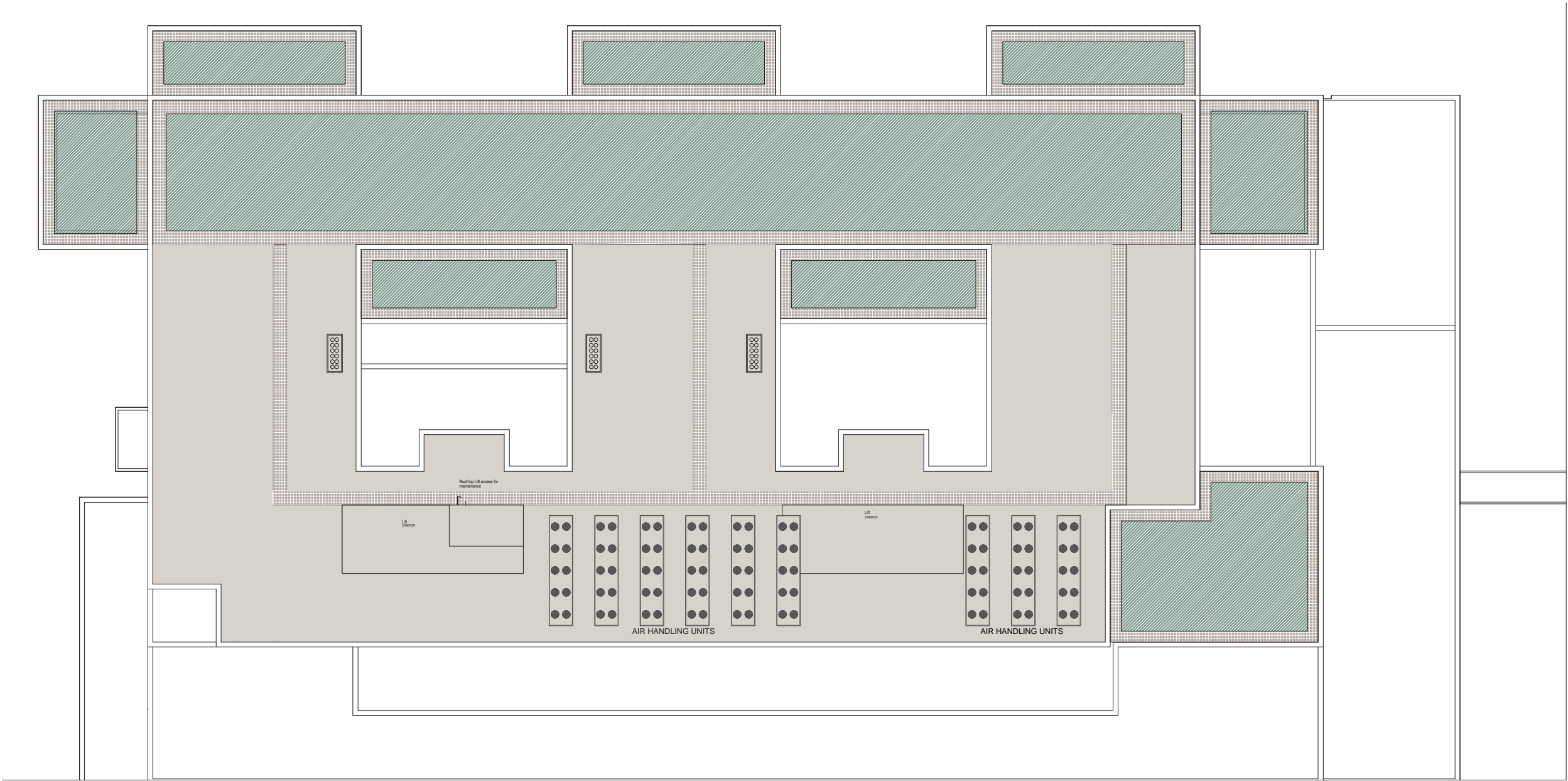
- Staff Cafe terrace with provision of a mix of seating types and sheltered dining areas with overhead pergola structures
- Raised metal planter at various heights with a mix of amenity shrub planting and specimen trees to the roof perimeter to provide a sense of enclosure and a calm green backdrop
- Paving to be a mix of pedestal paving system, composite deck and permeable resin bound gravel



- E1** PROPOSED FLUSH METAL EDGE  
MATERIAL: ALLUMINIUM
- E2** PROPOSED RAISED METAL PLANTER 450MM HIGH  
MATERIAL: STEEL
- E3** PROPOSED RAISED METAL PLANTER 1000MM HIGH  
MATERIAL: STEEL
- PROPOSED PEDESTAL PAVING SYSTEM  
MATERIAL: EXTRUDED PORCELAIN  
COLOUR: SILVER GREY
- PROPOSED COMPOSITE DECK SYSTEM  
MATERIAL: COMPOSITE  
COLOUR: COPPERED OAK
- PROPOSED PERMEABLE RESIN BOUND GRAVEL  
MATERIAL: 6MM NATURAL AGGREGATE  
COLOUR: 'WHITE'
- PROPOSED PERMEABLE RESIN BOUND GRAVEL  
MATERIAL: 6MM NATURAL AGGREGATE  
COLOUR: 'SILVER GREY'
- PROPOSED BENCH SEATS  
MATERIAL: TIMBER SLATS
- PROPOSED SEATS  
MATERIAL: TBC
- PROPOSED AMENITY PLANTING  
PLANTING TYPOLOGY 1  
SEE DAS FOR INDICATIVE SPECIES
- PROPOSED AMENITY PLANTING  
PLANTING TYPOLOGY 2  
SEE DAS FOR INDICATIVE SPECIES
- PROPOSED SPECIMEN TREES  
MIN. 16-18CM GIRTH AT PLANTING  
UNDERGROUND GUYED BACK TO PLANTER






# 6.19 Level 8 Terrace External Works






Terrace - Maintenance Access


Terrace - Public Access



PROPOSED PEDESTAL PAVING SYSTEM TO MAINTENANCE ACCESS AREAS - LAYOUT INDICATIVE SUBJECT TO DETAIL DESIGN OF PLANT MATERIAL: CONCRETE FLAG 450MM X 450MM X 50MM COLOUR: NATURAL



PROPOSED EXTENSIVE GREEN ROOF SEDUM TURF MATT SYSTEM/SUPPLIER TBC



PROPOSED BALLAST ROOF SYSTEM SUPPLIER AND PRODUCT TBC



SEDUM ROOF

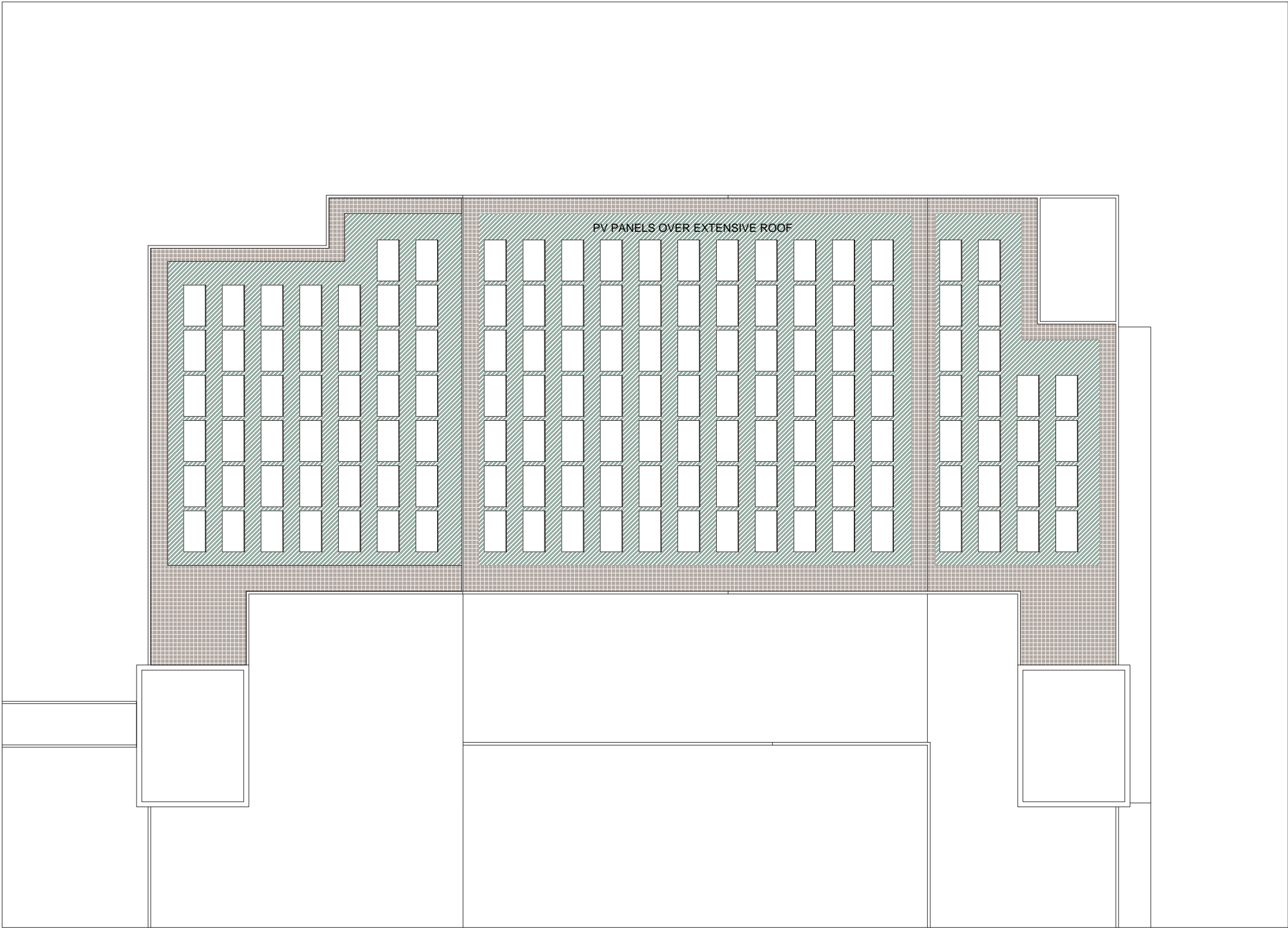
## Landscape Design Intent


### Level 08 Terrace

- Maintenance access only
- Pedestal paving system to the roof perimeter
- Extensive green roof sedum/turf matt system

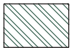


# 6.20 MSCP Roof Terrace External Works





PROPOSED PEDESTAL PAVING SYSTEM TO MAINTENANCE ACCESS AREAS - LAYOUT INDICATIVE SUBJECT TO DETAIL DESIGN OF PLANT MATERIAL: CONCRETE FLAG 450MM X 450MM X 50MM COLOUR: NATURAL



PROPOSED EXTENSIVE GREEN ROOF SEEDUM TURF MATT SYSTEM/SUPPLIER TBC



## Landscape Design Intent

### MSCP Terrace

- Maintenance access only
- Pedestal paving system to the roof perimeter
- Extensive green roof sedum/turf matt system below PV Solar Panel



## 6.21 Roof Terrace Planting Typologies



## PLANTING TYPOLOGY 1



## PLANTING TYPOLOGY 2



### PLANTING TYPOLOGY 3

[illegible][illegible]



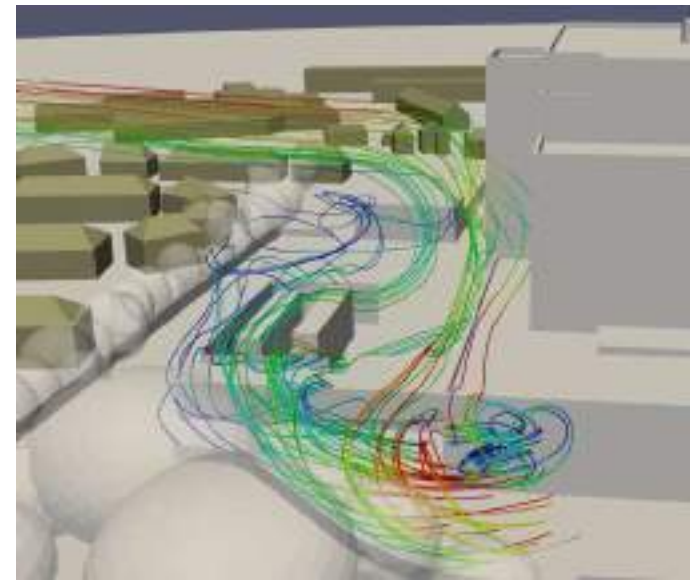
## 6.22 Living Green Wall

### Mitigation Screen

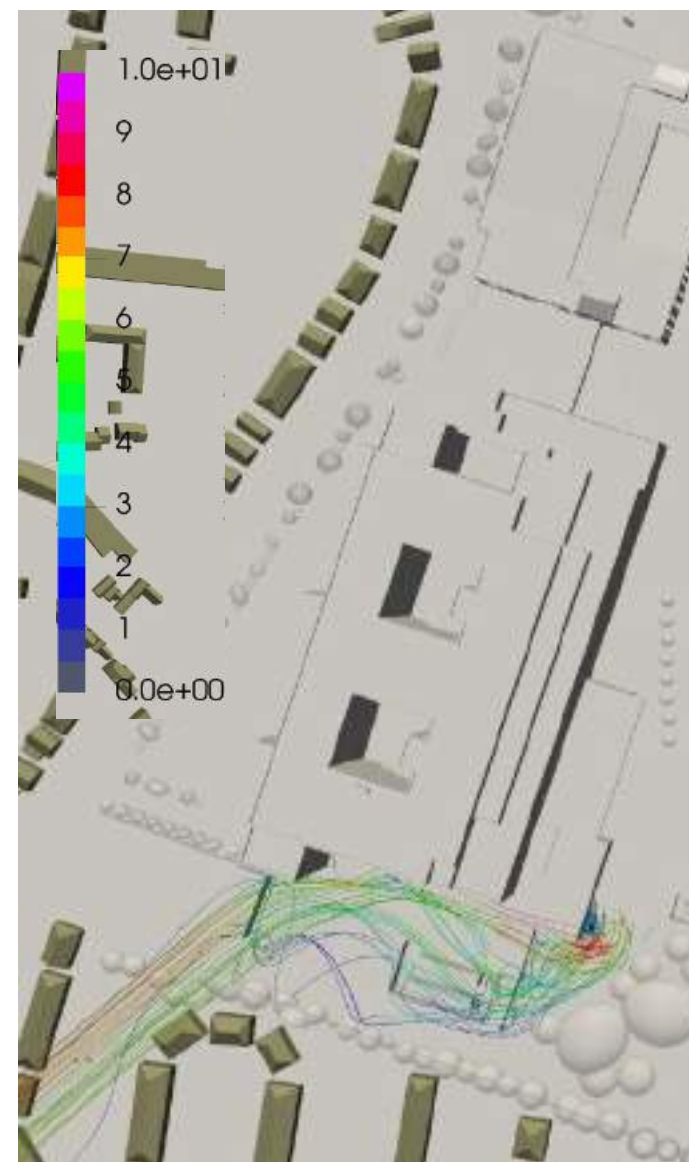
A living green screen has been introduced in the south-eastern corner of the building adjacent the ambulance yard to avoid areas of distress due to the downwash effect of the wind hitting the south facade of the proposed hospital.

The size of this screen is 10.2 by 9.1 metres (W x H) and will have a degree of perforation of circa 50% which can be achieved by the use of a tray systems where plants are pre-grown off-site and inserted into the wall/ screen. This allows for a great degree of design flexibility, especially since trays can be easily removed and replaced.

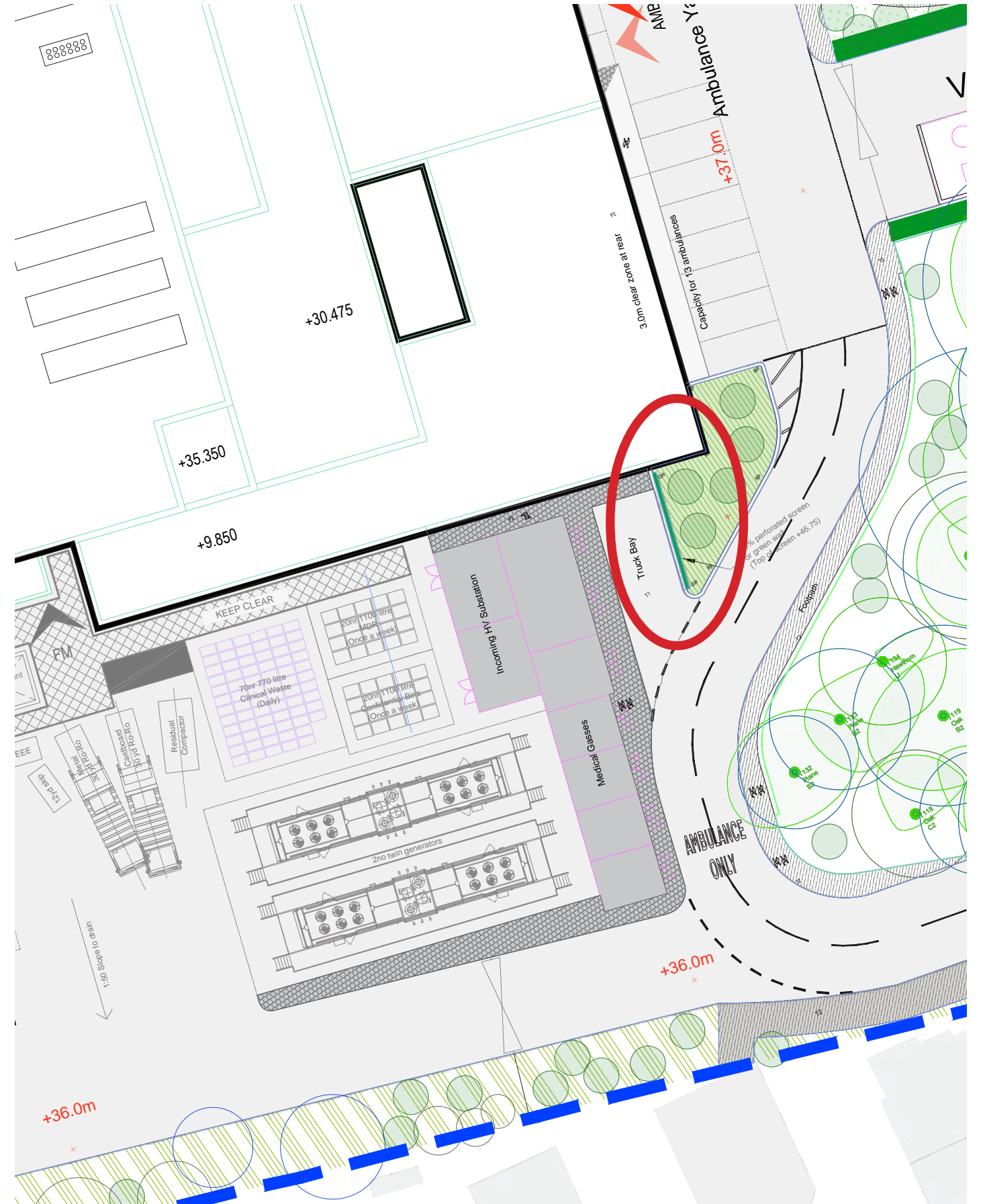
The screen, beside absolving its primary function, avoids direct views of the service yard, waste yard, medical gases houses and generators compound complementing at the same time the woodland park to the east



Streamlines coloured by velocity magnitude



Streamlines coloured by velocity magnitude



Location of the mitigation screen



# 6.22 Living Green Wall



Example of a big sized green wall



Example of modular system



Example of modular system



