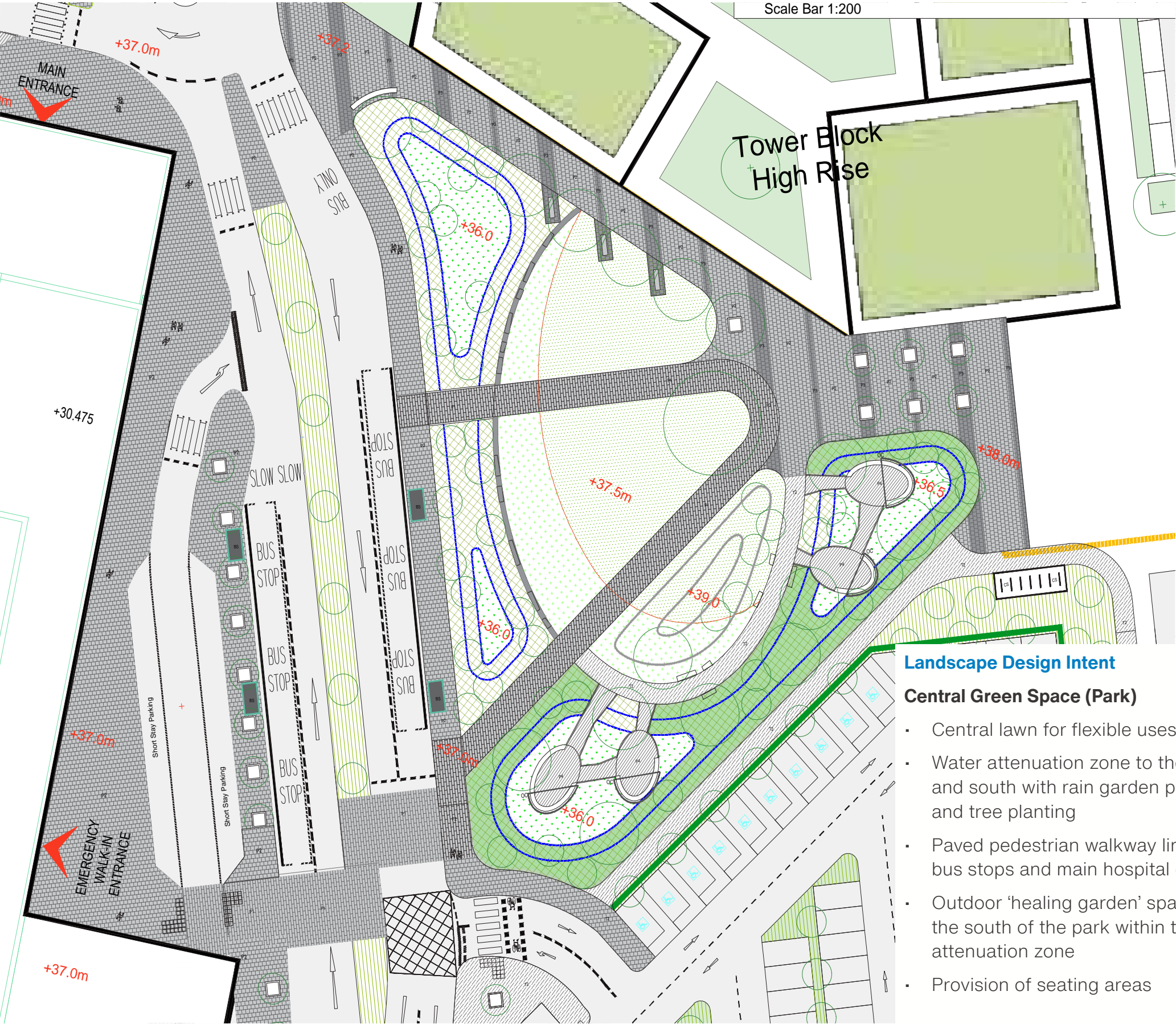


6.7 Central Greenspace



Landscape Design Intent

Central Green Space (Park)

- Central lawn for flexible uses/activities
- Water attenuation zone to the west and south with rain garden planting and tree planting
- Paved pedestrian walkway links to the bus stops and main hospital entrance
- Outdoor 'healing garden' spaces to the south of the park within the water attenuation zone
- Provision of seating areas

	Detailed planning application boundary
HARD LANDSCAPE	
	Vehicular grade tarmac to engineers specification
	Pedestrian grade tarmac to engineers specification
	Concrete paving
	Slab paving
	Slab paving - Vehicular
	Concrete slab feature banding
	Decking with guardrail
	Concrete seat wall
	Raised Planter
	Tactile paving
SOFT LANDSCAPE	
	Existing Trees to be retained - Identified as CAT A Trees within Arboricultural Report
	Existing Trees to be retained - Identified as CAT B Trees within Arboricultural Report
	Existing Trees to be retained - Identified as CAT C Trees within Arboricultural Report
	Existing Trees/Hedge to be coppiced/retained - Identified as CAT C Trees within Arboricultural Report
	Existing Trees to be removed
	Existing Vegetation Retained
	Proposed tree planting in hard landscape
	Proposed tree planting in soft landscape
	Proposed semi mature tree planting in soft landscape
	Proposed mixed planting
	Native Planting
	Proposed Rain Garden
	Proposed Native Hedge Planting
	Proposed grass seeding
	Proposed grass seeding - to include bulb and wildflower
	Proposed grass seeding - for damp conditions
	Proposed green wall
	Proposed swales / attenuation ponds to engineers specification
	Proposed landscape mounds to engineers specification
STREET FURNITURE	
	Stainless Steel and timber bench
	Bespoke Timber bench
	Bespoke Timber bench to deck seating area
	Natural Play Elements - Details TBC
	Cycle Stands
	Cycle Shelter
	Bus Shelter
	Gabion Wall
	Split Face Granite Block Wall
	1.2m Tall Feature Wall
	Overhead Canopy
FENCING	
	Security Perimeter fencing 1.8m high

6.8 Woodlands Area

Landscape Design Intent

Woodlands Area

- Retention of existing mature trees and vegetation to the south west and south
- Creation of fluvial mitigation flood basin to the east with connection to the existing watercourse to the south
- Provision of a 3m wide cycle-lane running north to south through the woodlands area to the west
- Provision of a 2m wide pedestrian footpath circuit running through the woodlands area
- Provision of sheltered seating/resting points throughout the woodlands area
- Planting of native tree and shrub planting and rain garden planting



Detailed planning application boundary

HARD LANDSCAPE

Vehicular grade tarmac to engineers specification

Pedestrian grade tarmac to engineers specification

Concrete paving

Slab paving

Slab paving - Vehicular

Concrete slab feature banding

Decking with guardrail

Concrete seat wall

Raised Planter

Tactile paving

SOFT LANDSCAPE

Existing Trees to be retained - Identified as CAT A Trees within Arboricultural Report

Existing Trees to be retained - Identified as CAT B Trees within Arboricultural Report

Existing Trees to be retained - Identified as CAT C Trees within Arboricultural Report

Existing Trees/Hedge to be coppiced/retained - Identified as CAT C Trees within Arboricultural Report

Existing Trees to be removed

Existing Vegetation Retained

Proposed tree planting in hard landscape

Proposed tree planting in soft landscape

Proposed semi mature tree planting in soft landscape

Proposed mixed planting

Native Planting

Proposed Rain Garden

Proposed Native Hedge Planting

Proposed grass seeding

Proposed grass seeding - to include bulb and wildflower

Proposed grass seeding - for damp conditions

Proposed green wall

Proposed swales / attenuation ponds to engineers specification

Proposed landscape mounds to engineers specification

STREET FURNITURE

Stainless Steel and timber bench

Bespoke Timber bench

Bespoke Timber bench to deck seating area

Natural Play Elements - Details TBC

Cycle Stands

Cycle Shelter

Bus Shelter

Gabion Wall

Split Face Granite Block Wall

1.2m Tall Feature Wall

Overhead Canopy

FENCING

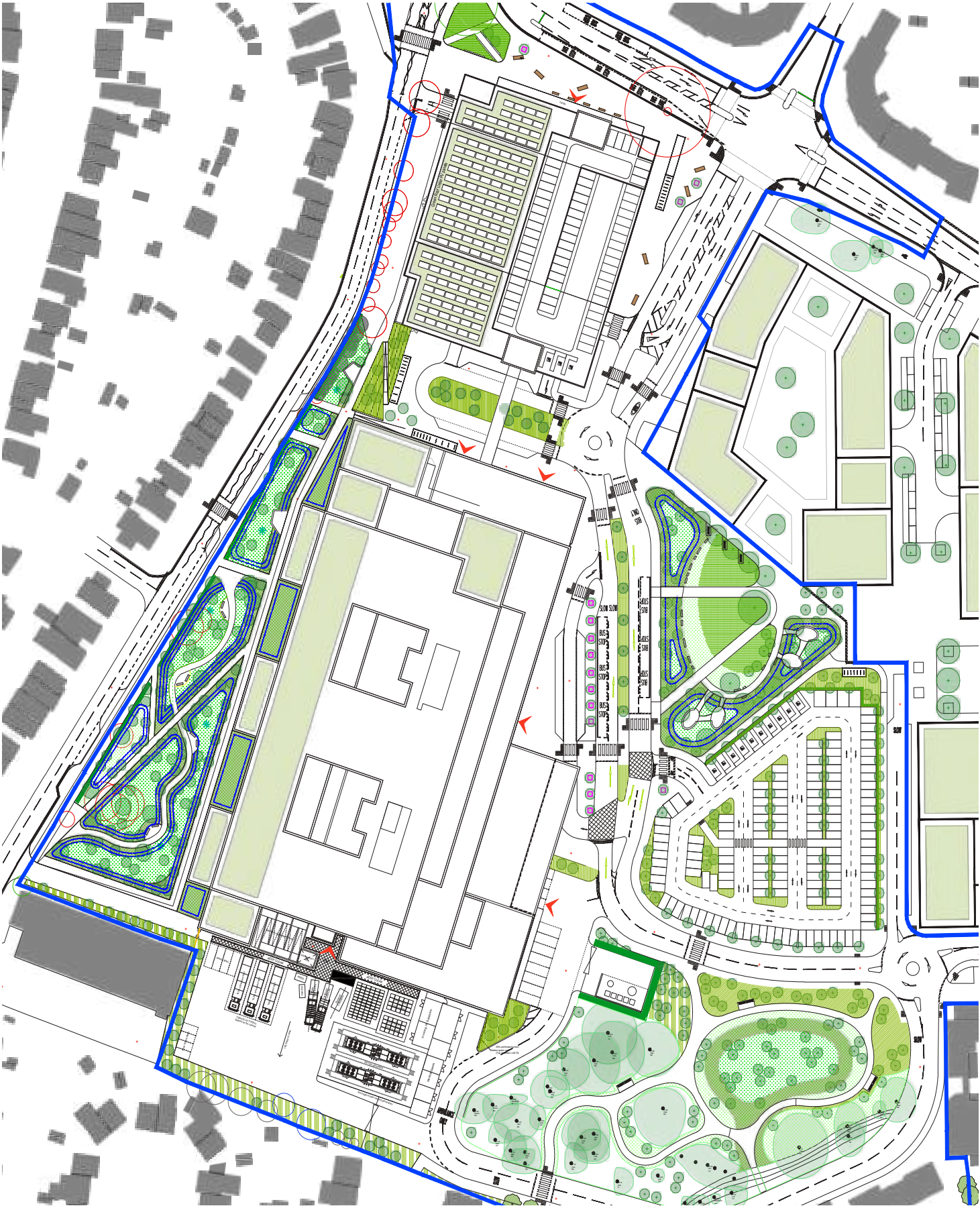
Security Perimeter fencing 1.8m high

MAY, 2022

153

6 HOSPITAL LANDSCAPE

6.9 Planting Strategy Plan



Planting Strategy Drawing to be read in conjunction with Indicative Planting Palette (THHR_01-IBI-WB-X-RP-L-000001)

SOFT LANDSCAPE

- Planning Application Boundary
- Existing Trees to be retained
- Identified as CAT A Trees within Arboricultural Report
- Existing Trees to be retained
- Identified as CAT B Trees within Arboricultural Report
- Existing Trees to be retained
- Identified as CAT C Trees within Arboricultural Report
- Existing Trees/Hedge be coppiced/retained
- Identified as CAT C Trees within Arboricultural Report
- Existing Trees to be removed
- Proposed tree planting in hard landscape
- Proposed tree planting in soft landscape
- Proposed semi mature tree planting in soft landscape
- Proposed mixed planting
- Native Planting
- Proposed Rain Garden
- Proposed Native Hedge Planting
- Proposed grass seeding
- Proposed grass seeding - to include bulb and wildflower
- Proposed grass seeding - for damp conditions
- Proposed green wall
- Proposed swales / attenuation ponds to engineers specification
- Proposed landscape mounds to engineers specification
- Proposed Green Roof
- Existing Vegetation Retained

6.10 Indicative Planting Palette

Rain Garden Planting



Indicative Planting

- *Alisma plantago-aquatica* varieties
- *Butomus umbellatus*
- *Caltha palustris*
- *Cyperus longus*
- *Eleocharis palustris*
- *Eriophorum angustifolium*
- *Iris pseudacorus* varieties
- *Juncus acutiflorus*
- *Juncus effusus*
- *Lythrum salicaria*
- *Phalaris arundinacea*
- *Phragmites australis*
- *Sparganium erectum*
- *Typha angustifolia*
- *Verbena bonariensis*

Outline Rain Garden Planting Specification

Marginal Planting depth up to 350mm : 7cm plugs @ 8 plants per sqm.
Emergent Planting depth 0-500mm 7cm plugs @ 8 plants per sqm.
Submergents planted below permanent water level @ 1 to 4 plants per sqm