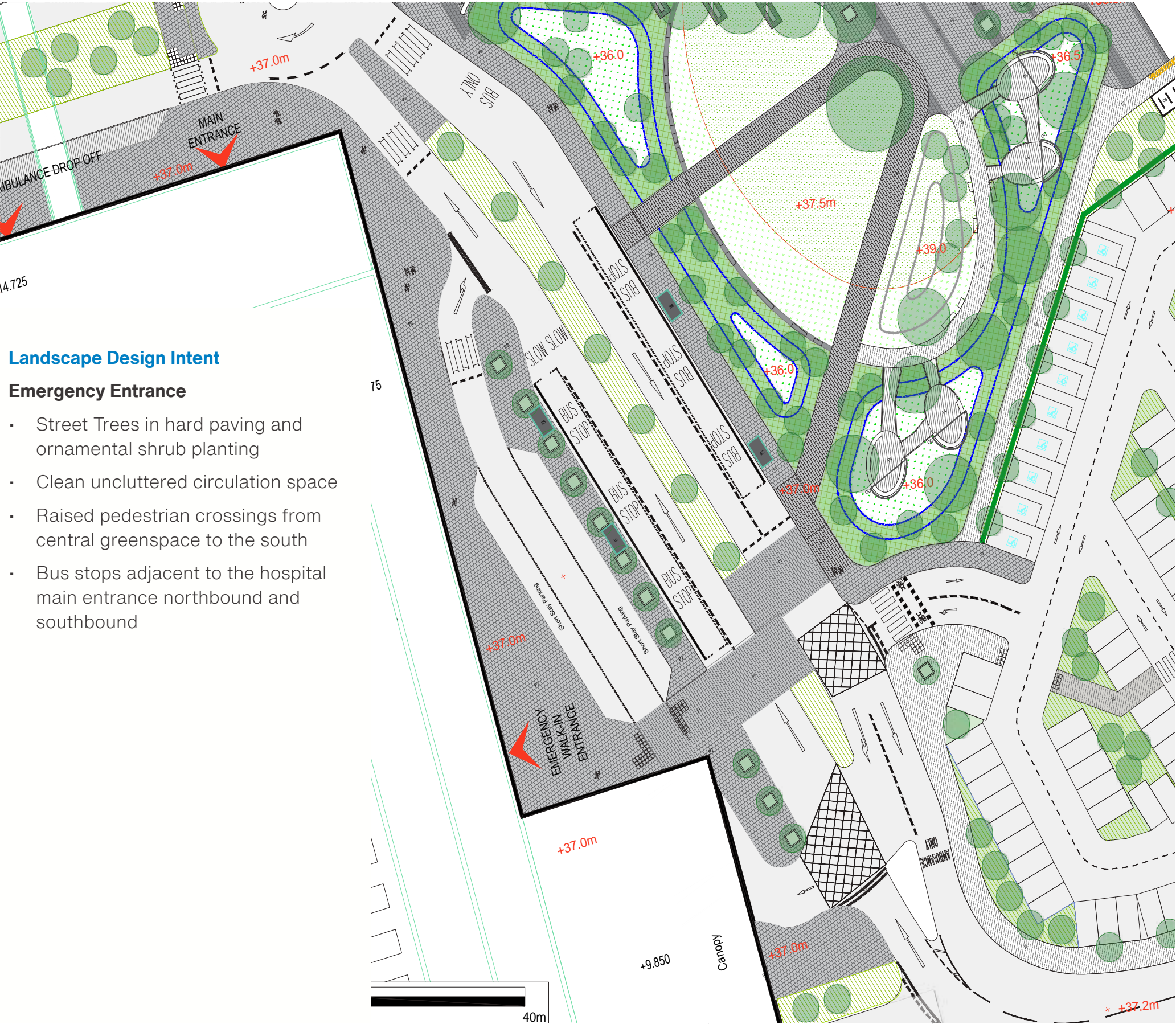


6.5 Emergency Walk In Entrance



Landscape Design Intent

Emergency Entrance

- Street Trees in hard paving and ornamental shrub planting
- Clean uncluttered circulation space
- Raised pedestrian crossings from central greenspace to the south
- Bus stops adjacent to the hospital main entrance northbound and southbound

Detailed planning application boundary

HARD LANDSCAPE

- Vehicular grade tarmac to engineers specification
- Pedestrian grade tarmac to engineers specification
- Concrete paving
- Slab paving
- Slab paving - Vehicular
- Concrete slab feature banding
- Decking with guardrail
- Concrete seat wall
- Raised Planter
- Tactile paving

SOFT LANDSCAPE

- Existing Trees to be retained - Identified as CAT A Trees within Arboricultural Report
- Existing Trees to be retained - Identified as CAT B Trees within Arboricultural Report
- Existing Trees to be retained - Identified as CAT C Trees within Arboricultural Report
- Existing Trees/Hedge to be coppiced/retained - Identified as CAT C Trees within Arboricultural Report
- Existing Trees to be removed
- Existing Vegetation Retained
- Proposed tree planting in hard landscape
- Proposed tree planting in soft landscape
- Proposed semi mature tree planting in soft landscape
- Proposed mixed planting
- Native Planting
- Proposed Rain Garden
- Proposed Native Hedge Planting
- Proposed grass seeding
- Proposed grass seeding - to include bulb and wildflower
- Proposed grass seeding - for damp conditions
- Proposed green wall
- Proposed swales / attenuation ponds to engineers specification
- Proposed landscape mounds to engineers specification

STREET FURNITURE

- Stainless Steel and timber bench
- Bespoke Timber bench
- Bespoke Timber bench to deck seating area
- Natural Play Elements - Details TBC
- Cycle Stands
- Cycle Shelter
- Bus Shelter
- Gabion Wall
- Split Face Granite Block Wall
- 1.2m Tall Feature Wall
- Overhead Canopy

FENCING

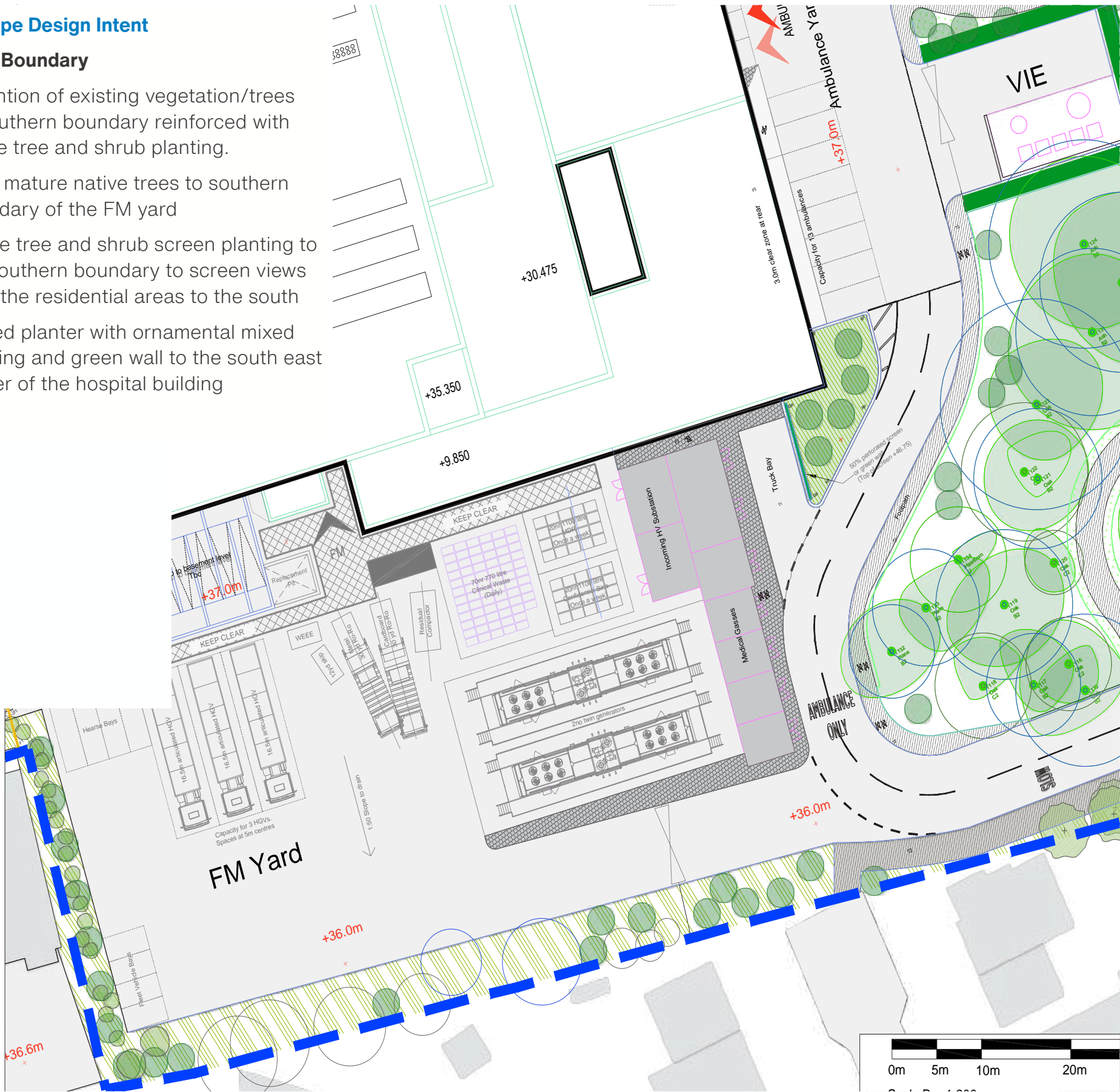
- Security Perimeter fencing 1.8m high

6.6 FM Yard boundary

Landscape Design Intent

FM Yard Boundary

- Retention of existing vegetation/trees to southern boundary reinforced with native tree and shrub planting.
- Semi mature native trees to southern boundary of the FM yard
- Native tree and shrub screen planting to the southern boundary to screen views from the residential areas to the south
- Raised planter with ornamental mixed planting and green wall to the south east corner of the hospital building



Detailed planning application boundary

HARD LANDSCAPE

- Vehicular grade tarmac to engineers specification
- Pedestrian grade tarmac to engineers specification
- Concrete paving
- Slab paving
- Slab paving - Vehicular
- Concrete slab feature banding
- Decking with guardrail
- Concrete seat wall
- Raised Planter
- Tactile paving

SOFT LANDSCAPE

- Existing Trees to be retained - Identified as CAT A Trees within Arboricultural Report
- Existing Trees to be retained - Identified as CAT B Trees within Arboricultural Report
- Existing Trees to be retained - Identified as CAT C Trees within Arboricultural Report
- Existing Trees/Hedge to be coppiced/retained - Identified as CAT C Trees within Arboricultural Report
- Existing Trees to be removed
- Existing Vegetation Retained
- Proposed tree planting in hard landscape
- Proposed tree planting in soft landscape
- Proposed semi mature tree planting in soft landscape
- Proposed mixed planting
- Native Planting
- Proposed Rain Garden
- Proposed Native Hedge Planting
- Proposed grass seeding
- Proposed grass seeding - to include bulb and wildflower
- Proposed grass seeding - for damp conditions
- Proposed green wall
- Proposed swales / attenuation ponds to engineers specification
- Proposed landscape mounds to engineers specification

STREET FURNITURE

- Stainless Steel and timber bench
- Bespoke Timber bench
- Bespoke Timber bench to deck seating area
- Natural Play Elements - Details TBC
- Cycle Stands
- Cycle Shelter
- Bus Shelter
- Gabion Wall
- Split Face Granite Block Wall
- 1.2m Tall Feature Wall
- Overhead Canopy

FENCING

- Security Perimeter fencing 1.8m high