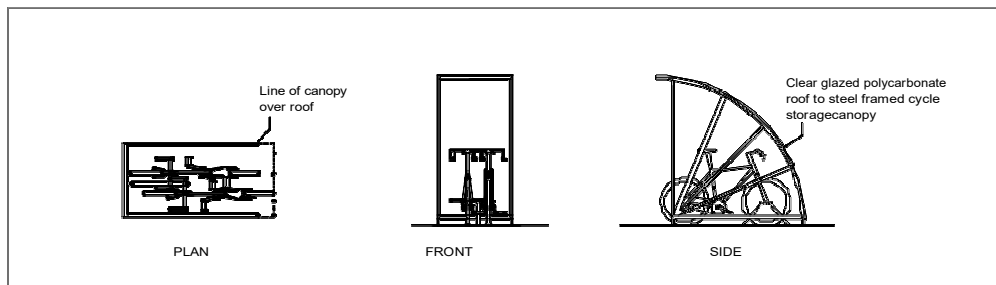


cycle parking provision (including location, housing and cycle stand details)

Bike Store / Stand Detailing



Length of stand 2m x 1m wide x 1.7m high

This means it will be below the garden fence level and not visible above the boundary walls of the property.

Covered Bin storage Detailing

Covered Storage bin area combine capacity of 0.25m³ for solid waste and recycling



- Slatted Timber Finish for Good Ventilation
- Solid Timber Roof for Shelter but Easy to Lift
- Double Opening Doors to the Front for Easy Access
- Smoothed Planed for a High-Quality Finish
- Heat Treated Timber for a High Quality and Durable Finish
- FSC - Forest Stewardship Council Approved Timber
- Full Instructions and Fixings Supplied
- 15 Year Manufacturers Guarantee Against Rot
- Height: 133cm
- Width: 154cm
- Depth: 81cm

Means of enclose – boundary tyreatments

Forest Garden Decibel Noise Reduction Fence Panel 6' x 6'



Product Details

Innovative domestic fence panel that combines great looks with noise reduction performance. Can reduce unwanted noise by as much as 30 decibels (dB). Smooth-planed timber is Pressure Treated for a longer life. Panels can be mounted with boards running vertically or horizontally. For

optimum acoustic performance use with slotted posts or screw directly onto wooden posts to ensure no gaps. Independently laboratory tested to BS EN ISO 10140-2 and ISO 717-1, achieving BS EN 1793-2:2012 Category B3 noise reduction. Pressure Treated timber with 15 year Anti-Rot guarantee. Manufactured from FSC certified timber from sustainable sources.

Technical Specification

Brand Forest

Width (mm) 1830

Height (mm) 1800

Unavailable offshore 1

Manufacturer ID SDPANEL18PK5HD

Width (mm) 1830

Type Noise Reduction

Depth (mm) 45

Pack Size 5

Width (feet) 6

Height (feet) 6

Sustainable water management and SUDS

Attached separately under the below document names

Name



Appendix A Collection of Maps and Figures.pdf



Appendix B Existing Site and Proposed Plans.pdf



Appendix C Surface Water Flood Maps.pdf



Appendix D Greenfield Runoff Rate Estimation.pdf



Appendix E Rainfall Runoff Summary.pdf



Appendix F Proposed Surface Runoff Improvement Measures (SuDS).pdf



Appendix F Soakaway Test Results.pdf



Appendix G Sewer Asset Map Data.pdf



Appendix H Attenuation Modelling Output Summary.pdf

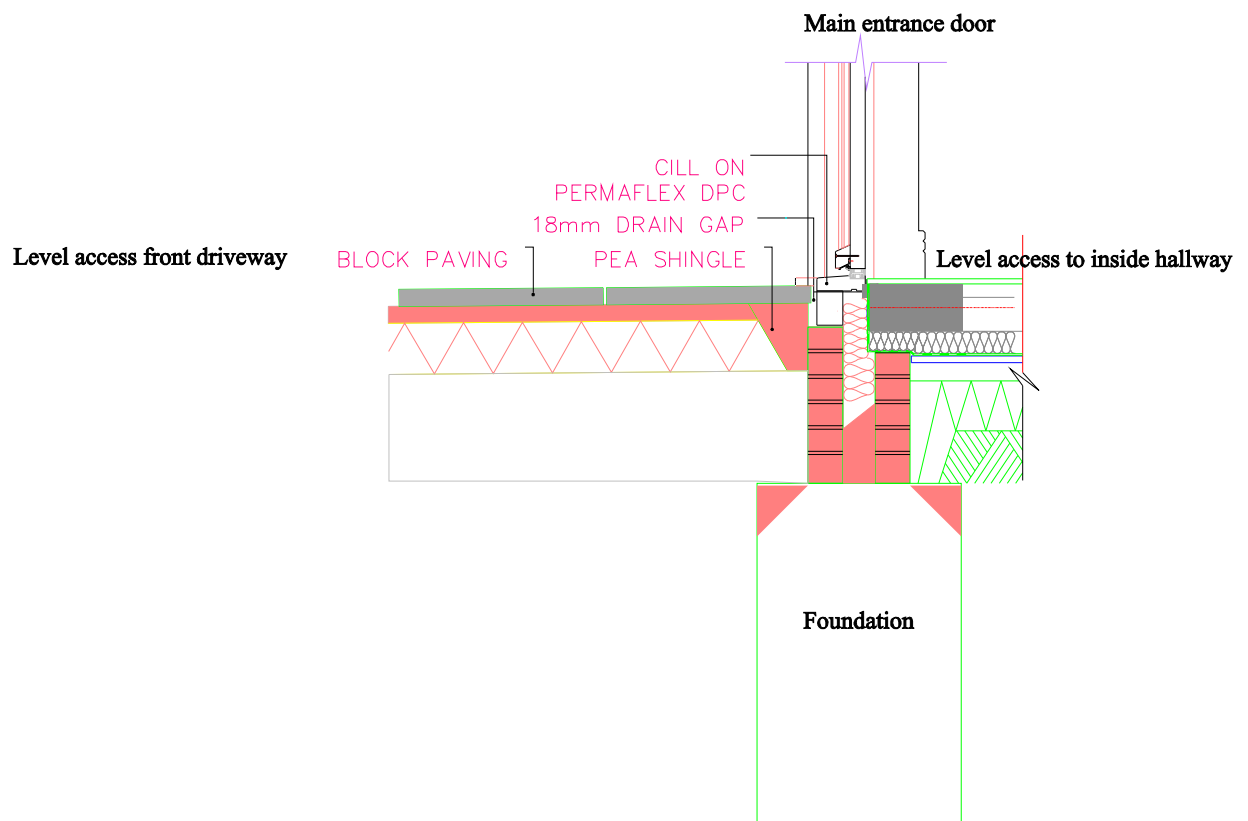


Appendix I Exceedance Flow Routes.pdf



Drainage Strategy SuDS Report Oxeney Cottage, Thorney M..., West Drayt

Step Free Access details



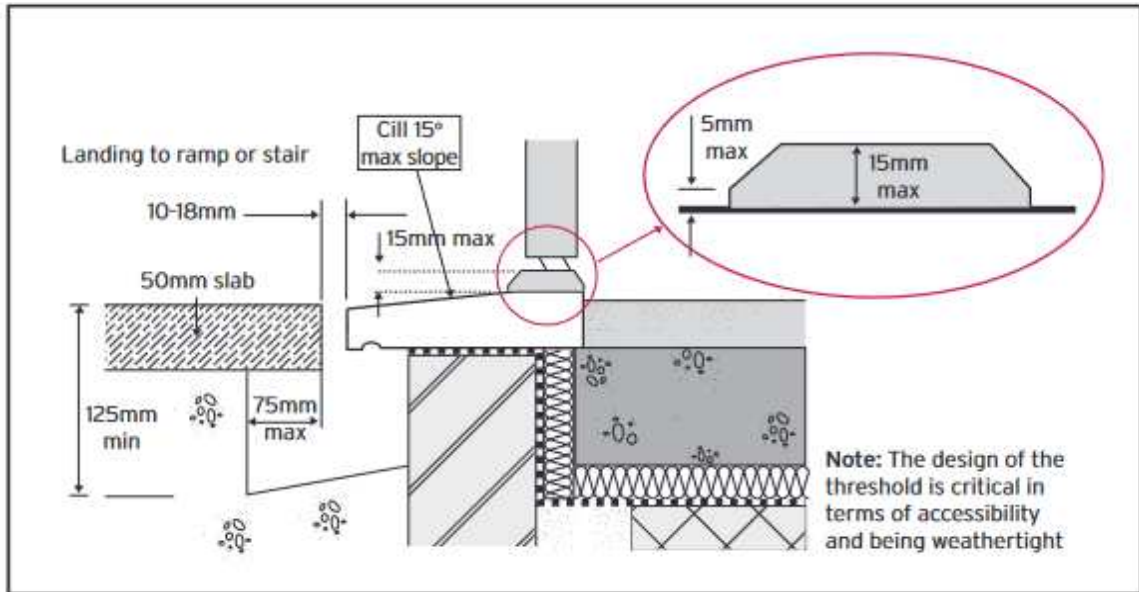


Diagram 5 - Accessible threshold

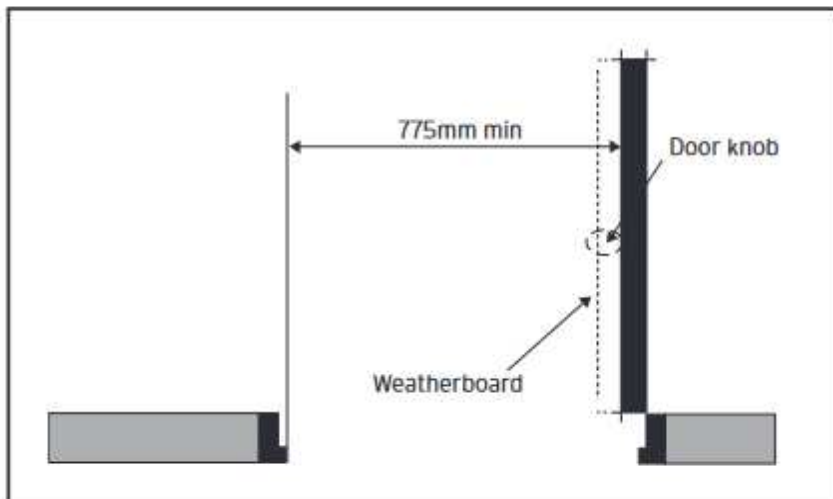


Diagram 6 - Entrance door