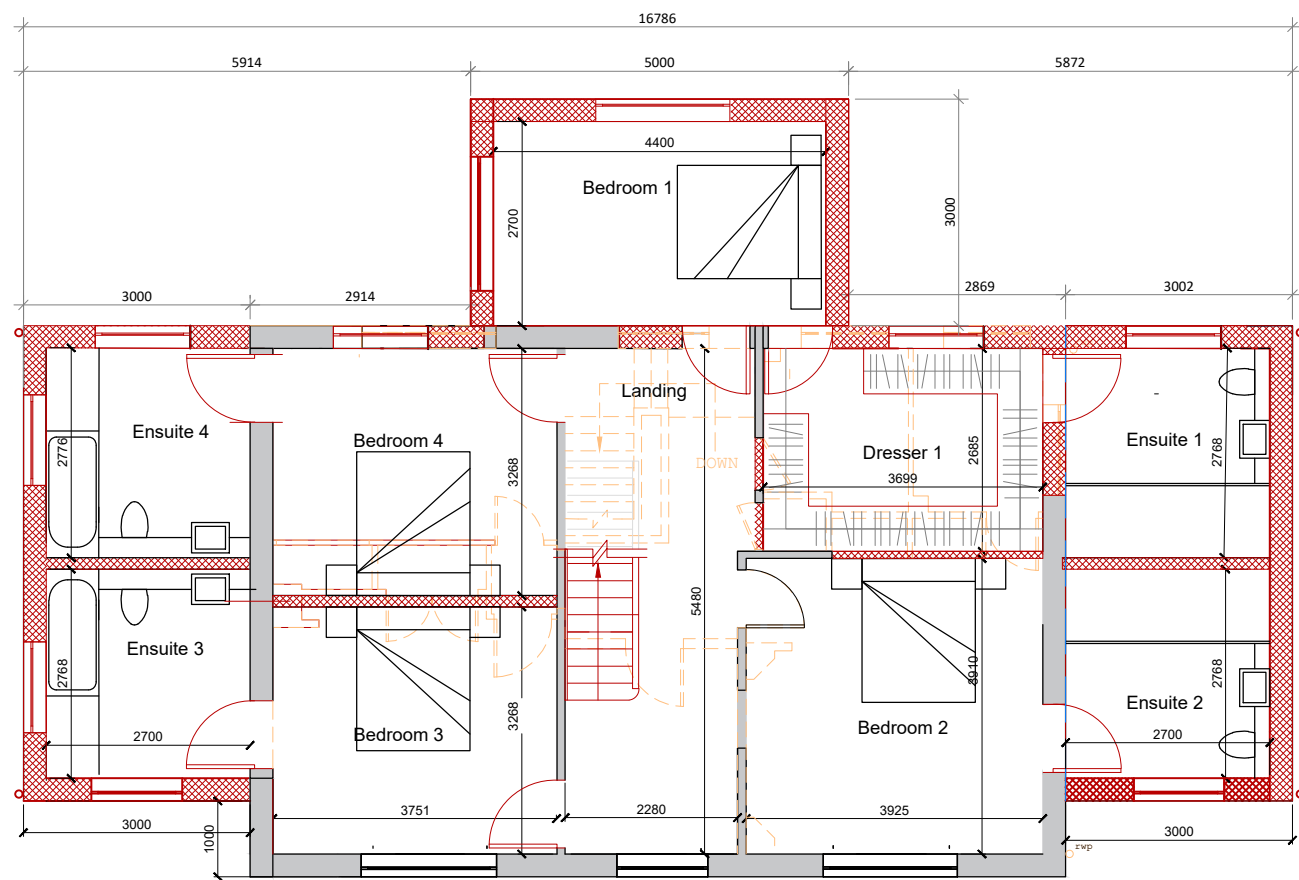
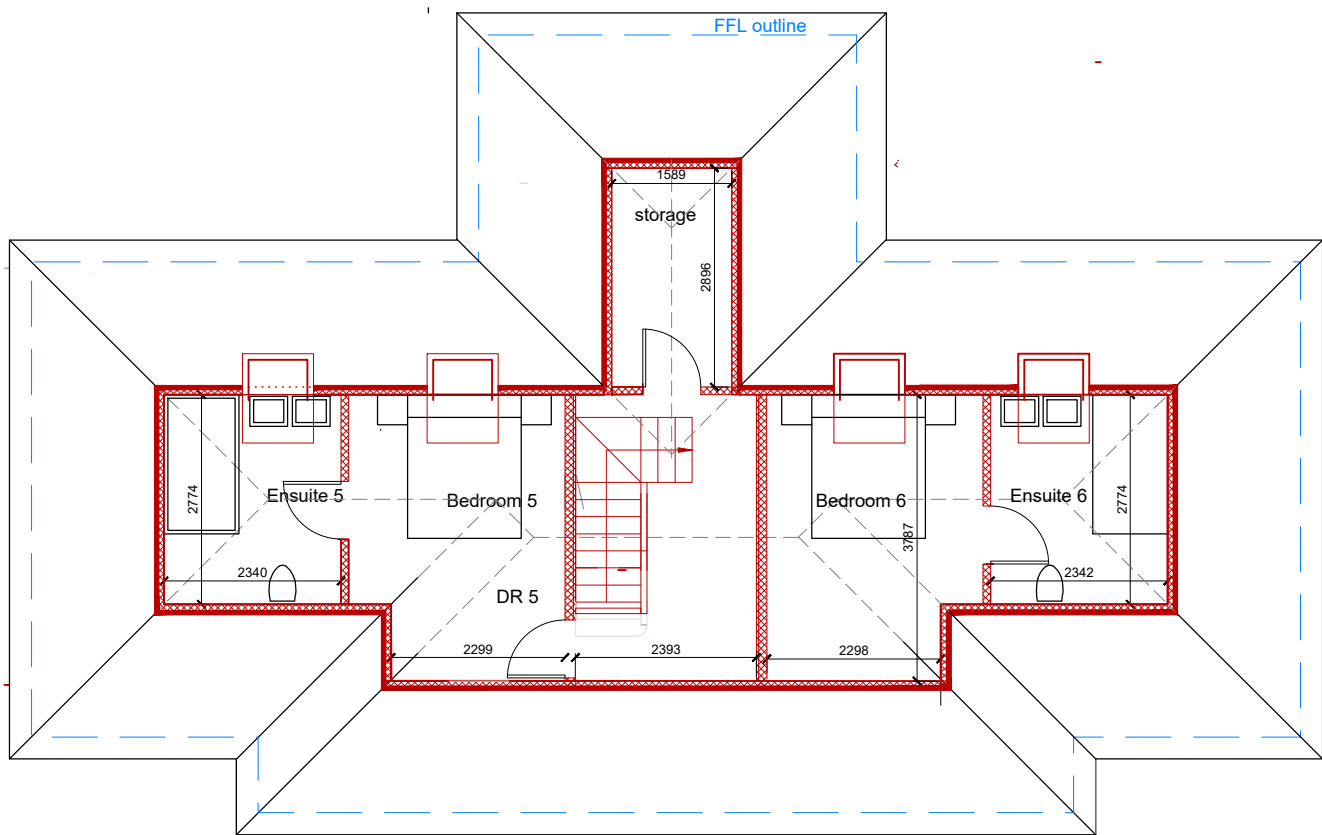


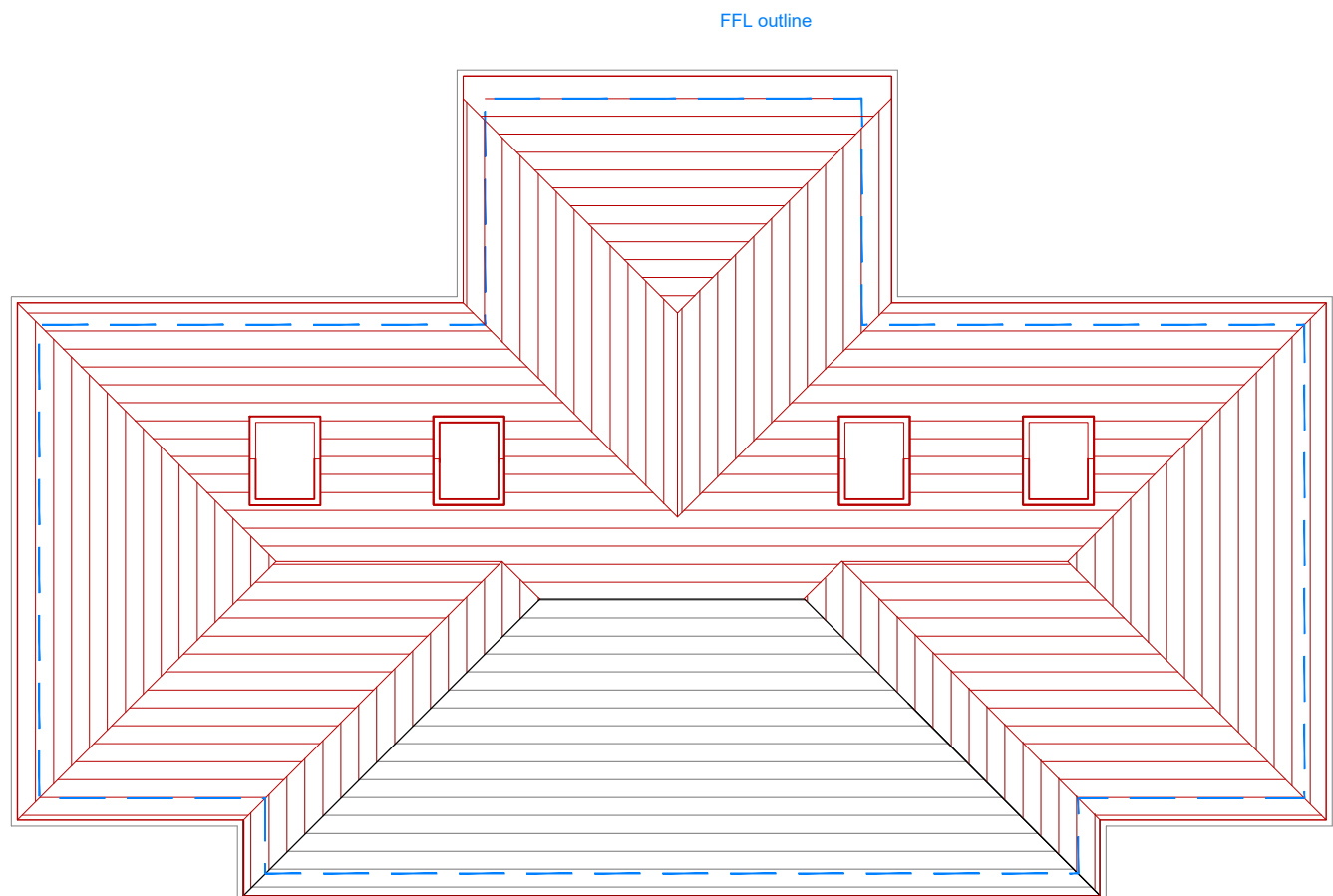
PROPOSED GROUND FLOOR PLAN



PROPOSED FIRST FLOOR PLAN



PROPOSED LOFT PLAN
Cut @ 1100mm



PROPOSED ROOF PLAN



Amendments/Notes			
Rev.	Detail	By	Date
A	Double checked dimensions	SL	14.02.24
B	Reduced rear extension to 3m depth	SL	25.03.24
<div>LEGEND</div> <div><div><div></div></div><div>PROPOSED</div></div> <div><div><div></div></div><div>EXISTING</div></div> <div><div><div></div></div><div>DEMOLISHED</div></div> <div>NOTE:</div> <div><div><u>Plans:</u></div><div>Red Hatch As Proposed.</div><div>Grey Hatch As Existing.</div><div>Orange Dash As Demolished Existing.</div><div><u>Elevations:</u></div><div>Red Lines As Proposed.</div><div>Black Lines As Existing.</div><div>Orange Dash As Demolished Existing.</div></div> <div>All dimensions and levels to be checked on site by contractor prior to preparation of shop drawings and commencement of work on site. This drawing and the copyrights and patents therein are the property of the Architect and may not be used or reproduced without consent. This drawing is to be read in conjunction with all relevant consultants and/or specialist's drawings/documents and any discrepancies or variations are to be notified to the Architect before the affected work commences. All works on site are to be carried out fully in accordance with current CDM regulations and recommendations, current Building Regulations, British Standards and Codes of Practice as appropriate.</div> <div>Project<div>1A RAVENSWOOD PARK NORTHWOOD MIDDLESEX</div></div> <div>Drawing<div>PROPOSED FLOOR PLANS</div></div> <div><div>SEABROOK ARCHITECTS</div><div>CHARTERED ARCHITECTS</div><div>Unit17, Chiltern Court, Ashridge Road, Chesham, Bucks, HP5 2PX Tel: 01494 778918 e-mail: info@gspacearchitects.co.uk</div></div> <div><div><div>Drawn BySL</div><div>Date05.02.2024</div></div><div><div>Checked ByJS</div><div>Date-</div></div><div><div>Approved By</div><div>Scale1:100 @ A1</div></div><div><div>Drawing No.5829/ PL02</div><div>Rev.B</div></div></div>			