

Arboricultural Method Statement

48 Albert Road, Yiewsley

June 2023

CONTENTS:

1. INTRODUCTION
2. DEVELOPMENT STAGES
3. TREE WORKS
4. TREE PROTECTION
5. SOFT LANDSCAPING WITHIN RPA

1. INTRODUCTION

Background: LSDP were appointed to prepare an Arboricultural Method Statement (AMS) and tree protection details, to satisfy local authority requirements, relating to the proposed development. This document should be read in conjunction with the accompanying Landscape Proposal / Tree Protection Plan ref LSDP 2083-01; copies of each must be available for all relevant site personnel, to ensure that existing trees are adequately protected during the construction process.

2. DEVELOPMENT STAGES

Generally: The following items are set out in likely chronological order. Should any variance be required, then the Project Arboriculturist shall be consulted to ensure works are in compliance with Local Authority requirements.

- **Pre-development stage:**
 - Tree removal and pruning required to facilitate development
 - Installation of protective barriers
- **Demolition / Site Clearance Stage:**
 - Review compliance of implemented tree protection with approved details
 - Demolition and site clearance
- **Construction Stage:**
 - Review compliance of implemented tree protection with approved details
 - Review works requiring access to RPA's
 - Agree storage areas for materials, locations of site facilities etc.
 - Groundwork and installation of services
 - Construction of development
- **Post-development stage:**
 - Removal of tree protection barriers
 - Implementation of soft landscaping

3. TREE WORKS

Generally: No works to existing trees protected by TPO, Conservation Area, or planning condition shall be carried out without the prior approval of the local planning authority.

Works to retained trees shall be carried out by a competent arborist and in accordance with BS3998 (2010) 'Recommendations for Tree Work'.

The 'Countryside and Wildlife Act (1981)' must be complied with; in particular, if the presence of nesting birds or bat roosts is suspected.

Wood chippings may be left on site, subject to approval of the Site Manager and stored for landscaping usage.

Trees	Proposed Work
Conifers on northern edge of site	Fell close to ground level. Stumps may be left in place and allowed to decay in situ

4. TREE PROTECTION

Generally: Before any machinery or materials are brought onto site and before any demolition, development or stripping of soil commences, The Root Protection Area (RPA) indicated on the Tree Protection Plan shall be set out and Protective Barriers installed as shown on the drawing.

The Protective Barriers shall not be removed or altered without prior recommendation by an arboriculturist and approval of the local planning authority.

The areas protected by barriers shall be subject to the following restrictions:

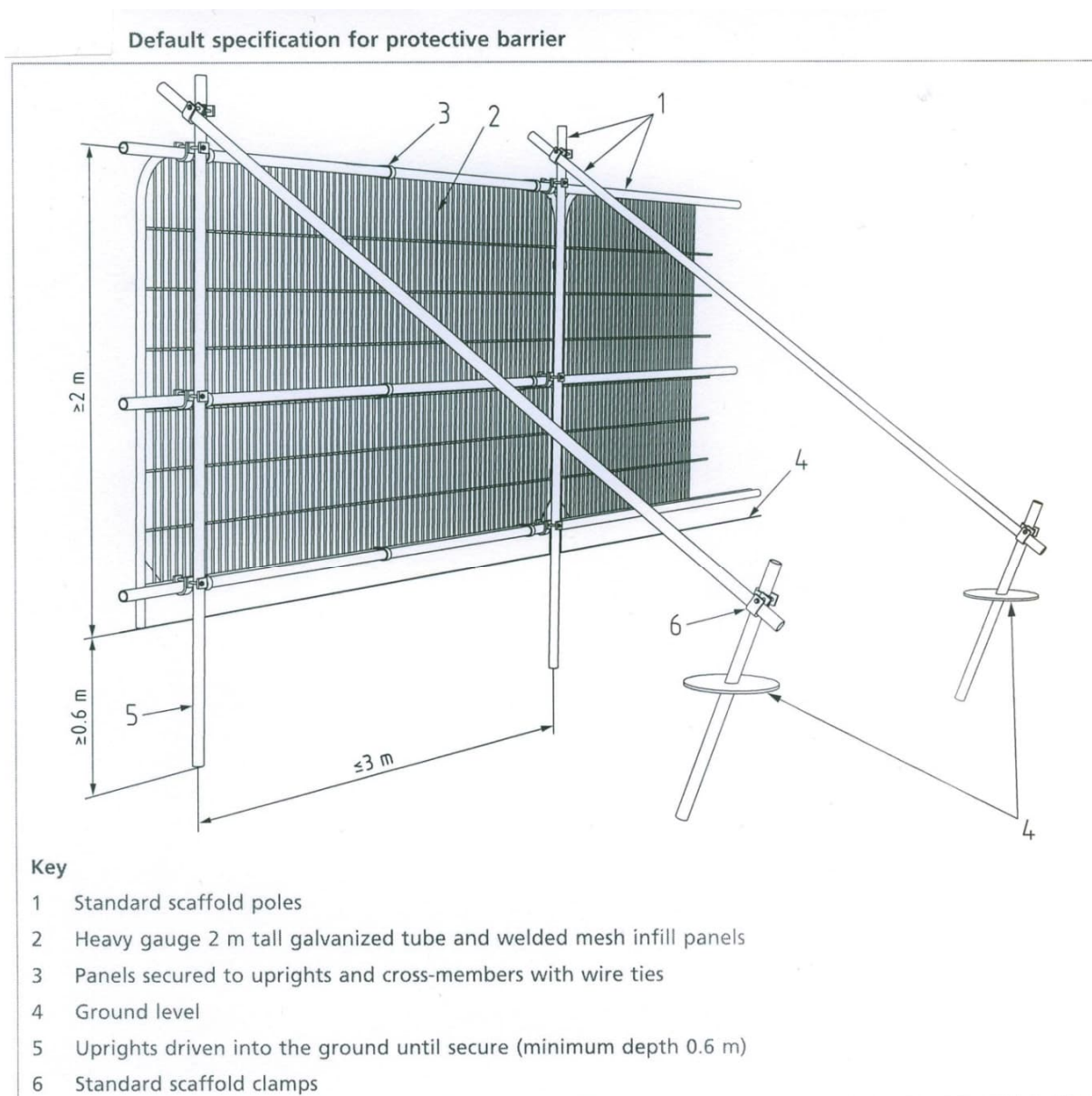
- I. Existing soil levels within the protected areas shall not be altered
- II. No excavation of any kind shall take place within the protected areas.
- III. The protected areas shall not be used for storage of any kind
- IV. No vehicles or machinery shall be allowed into the areas
- V. No dumping of waste liquids or other materials

Additionally, the following restrictions apply to the areas beyond the RPA of retained trees:

- I. Waste liquids which may be harmful to trees, such as cement washings, shall not be tipped within 5m of root protection areas.
- II. Chemicals which may be harmful to trees such as oil, diesel and bitumen shall not be stored or poured within 10m of Root Protection Areas.

Should the developer require the above restrictions to be breached for unforeseen reasons, an appropriate method of works must be agreed with the Local Authority prior to any works taking place within the protected areas.

Protective Barriers: Protective Barriers shall be erected to prevent access into designated areas around retained trees. Once installed, all weather notices shall be attached to each barrier with words such as: "Construction Exclusion Zone – No Access". Protective Barriers shall be erected in accordance with BS5837: 2012 Fig 2 (See overleaf).

BS5837: 2012 Fig 2**5. SOFT LANDSCAPING WITHIN RPA**

Generally: The following restrictions apply to soft landscape works within RPA's:

- Cultivation within RPAs shall be kept to a minimum and shall be by hand; rotovators must not be used within RPA's.
- Herbicides must not be used within RPA's
- Fine grading of surface must be carried out by hand, existing ground levels should not be otherwise altered.

PLANTING SPECIFICATION

GENERALLY

- Ecological Requirement:** Peat and peat-based materials shall not be used in implementing the works, this includes the growing media used in container grown plant stock.
- Timing:** Planting shall be implemented during the first planting season from mid-November to mid- March following substantial development completion or phases thereof.
- Plant Stock:** Plant stock must be in strict accordance with the schedule of plants shown on the drawing. Plant stock shall be sourced from nurseries that comply with BS 3936: 2012
- Planting Conditions:** No planting shall take place when the ground is frozen, wet or waterlogged or in excessively windy conditions, or in any other conditions that could adversely affect the successful establishment of plant material. All plants on site to be protected from adverse weather conditions.
- Planting Positions:** All plants must be planted in the exact locations shown on the drawings, if this is not possible due to site layout changes or unmarked service runs etc. then changes must be agreed and confirmed in writing by the Contract Administrator.
- Watering Prior to Planting:** All container grown and root balled planting stock shall be thoroughly watered before planting on the same day as the planting operation.

PLANTING BEDS

- Bed Widths:** Shrub beds shall be 1m minimum width, where space allows. Hedge beds shall be 700mm for single row hedges and 1m for double-row hedges.
- Herbicide Application:** Spray planting beds with translocated herbicide if there is any pernicious perennial weed growth. Allow weed growth to die off and repeat treatments if necessary to ensure that planted areas are free from perennial weed growth prior to further cultivation.
- Cultivation:** Cultivate all planting beds to 300mm depth to form an open textured free draining growing medium. Remove all stones and other debris larger than 100mm and remove all litter and vegetative matter. Areas of existing soil that have become compacted shall be broken up and loosened by hand forking or deep ripping to a depth of 600mm in accordance with the relevant British Standards.
- Finished Surface:** Rake all shrub and hedge beds to form an even surface. Remove all surface stones and other debris larger than 50mm. NB ensure that final soil levels within 300mm of edge of all beds are 70mm below adjacent surfaces, to stop mulch moving from bed. Water lightly if the soil is dry prior to planting.
- Planting:** Container grown shrubs shall be pit planted, small open ground stock may be notch planted. Following planting, lightly firm the soil around the base of the plant.
- Wood Chip Mulch:** Mulch shall be coarse wood chips with no fines. Spread wood chip mulch to an even depth of 50mm over entire planted area.
- Pruning:** Immediately after planting shrubs and hedging, carefully remove all damaged, dead or diseased branches and remove any weak, thin or malformed growth in a manner and at a point appropriate for the species.
- Watering:** Water in each plant position with 15 litres, or to field capacity upon planting, or at the end of the day during which the planting was carried out.

MAINTENANCE

- Maintenance period:** Carry out the following maintenance operations until planting is established. Ensure that maintenance operations are carried out as necessary to keep the works in a tidy condition throughout the maintenance period.
- Weed control:** Remove all weed growth by hand or treat with spot herbicide applications, taking care to avoid spray drift. All arisings to be removed from site.
- Litter removal:** Remove from site all litter and other debris during each maintenance visit.
- Pruning:** Prune off dead, damaged, diseased or misshapen growth from shrubs and trees to promote good habit and shape.
- Replacement:** Replace or make good immediately, any soft landscape item that fails, or does not develop full foliage during the maintenance period.
- Watering:** Water soft landscape items as necessary throughout the maintenance period, to ensure establishment. Replace or make good immediately, any soft landscape item that fails due to lack of water.

PLANT SCHEDULE

SHRUBS

QTY	CODE	PLANT NAME	STOCK	SIZE	SPACING
15No.	Abe FM	Abelia x grandiflora 'Francis Mason'	C 3L	30-40cm	3/m2
3No.	Cho Azt 10L	Choisya ternata 'Aztec Pearl'	C 10L	40-60cm	1/m2
9No.	Cis May	Cistus 'May Snow'	C 3L	20-30cm	3/m2
11No.	Heb Red	Hebe 'Red Edge'	C 3L	20-30cm	4/m2
9No.	Heb Mar	Hebe 'Marjorie'	C 3L	40-60cm	3/m2

HERBACEOUS PLANTS

QTY	CODE	PLANT NAME	STOCK	SPACING
15No.	Sal Car	Salvia nemorosa "Caradonna"	C 2L	5/m2
40No.	Sed das	Sedum dasyphyllum	C 1L	5/m2

TREES

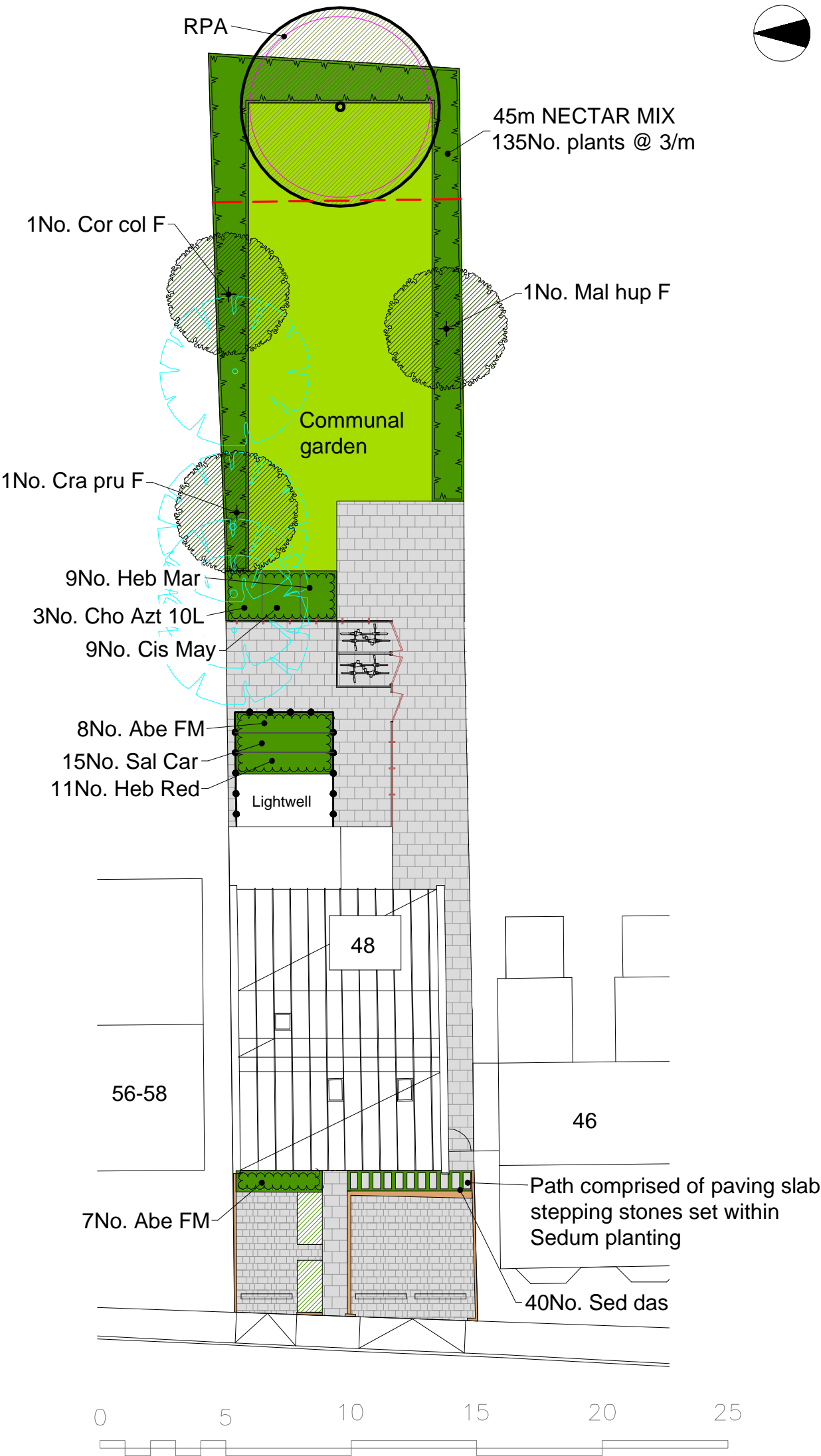
QTY	CODE	PLANT NAME	STOCK	FORM	GIRTH/HEIGHT
1No.	Cor col F	Corylus columna	C 15L	FTH	180-200cm
1No.	Cra pru F	Crataegus prunifolia	C 15L	FTH	150-180cm
1No.	Mal hup F	Malus huphensis	C 15L	FTH	150-180cm

HEDGE MIXES

PERCENT	QTY	PLANT NAME	STOCK	SIZE
45m NECTAR MIX planted @ 3/m in a Single Row				
20%	27No.	Berberis thunbergii	C 2L	45-60cm
20%	27No.	Cornus alba	C 2L	45-60cm
20%	27No.	Cotoneaster lacteus	Bare root	60-90cm
20%	27No.	Escallonia 'Apple Blossom'	C 2L	45-60cm
20%	27No.	Ligustrum vulgare	Bare root	60-90cm
Plant in groups of 3-7 of single species				

NOTES AND ABBREVIATIONS:

C = Container (or pot) grown, followed by size of the container (or pot).
FORM = Shape of tree as supplied by the nursery.
Fth = Feather.
QTY = Quantity
STOCK = Root condition/protection method eg Bare root.
- Refer to specification for further information.
- All plants to be completely hardened off
- Substitutions to be agreed with Landscape Architect.
Plant Schedule generated by "Qscape" software 21/06/2023



KEY

Existing ash tree to be retained

Conifer screen to be removed

Tree Protection Barrier - refer to accompanying Arboricultural Method Statement

Proposed trees

Proposed hedges

Proposed shrub planting

Lawn

Pre-cast concrete slab paving

Tegula or equivalent block paving

Timber close boarded fence, 1.8m high with matching lockable gates

Black metal railings 1.2m high

Low retaining wall

Green roof bin store

Revisions :

Land & Sculpture Design Partnership
LANDSCAPE ARCHITECTURE · SCULPTURE · ARBORICULTURE

SITE : 48 Albert Road, Yiewsley
DRG : Landscape Proposal / Tree Protection Plan
DRN BY : GH
SCALE : 1:200 @ A2
DATE : June 2023
No : LSDP 2083.01

OCTAGON HOUSE · THE WATER RUN · HITCHAM · IPSWICH · IP7 7LN
T : 01449 740272 · E : Giles@LSDP.uk