

PLANTING SPECIFICATION

GENERALLY

- Ecological Requirement:** Peat and peat-based materials shall not be used in implementing the works, this includes the growing media used in container grown plant stock.
- Timing:** Planting shall be implemented during the first planting season from mid-November to mid- March following substantial development completion or phases thereof.
- Plant Stock:** Plant stock must be in strict accordance with the schedule of plants shown on the drawing. Plant stock shall be sourced from nurseries that comply with BS 3936: 2012
- Planting Conditions:** No planting shall take place when the ground is frozen, wet or waterlogged or in excessively windy conditions, or in any other conditions that could adversely affect the successful establishment of plant material. All plants on site to be protected from adverse weather conditions.
- Planting Positions:** All plants must be planted in the exact locations shown on the drawings, if this is not possible due to site layout changes or unmarked service runs etc. then changes must be agreed and confirmed in writing by the Contract Administrator.
- Watering Prior to Planting:** All container grown and root balled planting stock shall be thoroughly watered before planting on the same day as the planting operation.

PLANTING BEDS

- Bed Widths:** Shrub beds shall be 1m minimum width, where space allows. Hedge beds shall be 700mm for single row hedges and 1m for double-row hedges.
- Herbicide Application:** Spray planting beds with translocated herbicide if there is any pernicious perennial weed growth. Allow weed growth to die off and repeat treatments if necessary to ensure that planted areas are free from perennial weed growth prior to further cultivation.
- Cultivation:** Cultivate all planting beds to 300mm depth to form an open textured free draining growing medium. Remove all stones and other debris larger than 100mm and remove all litter and vegetative matter. Areas of existing soil that have become compacted shall be broken up and loosened by hand forking or deep ripping to a depth of 600mm in accordance with the relevant British Standards.
- Finished Surface:** Rake all shrub and hedge beds to form an even surface. Remove all surface stones and other debris larger than 50mm. NB ensure that final soil levels within 300mm of edge of all beds are 70mm below adjacent surfaces, to stop mulch moving from bed. Water lightly if the soil is dry prior to planting.
- Planting:** Container grown shrubs shall be pit planted, small open ground stock may be notch planted. Following planting, lightly firm the soil around the base of the plant.
- Wood Chip Mulch:** Mulch shall be coarse wood chips with no fines. Spread wood chip mulch to an even depth of 50mm over entire planted area.
- Pruning:** Immediately after planting shrubs and hedging, carefully remove all damaged, dead or diseased branches and remove any weak, thin or malformed growth in a manner and at a point appropriate for the species.
- Watering:** Water in each plant position with 15 litres, or to field capacity upon planting, or at the end of the day during which the planting was carried out.

MAINTENANCE

- Maintenance period:** Carry out the following maintenance operations until planting is established. Ensure that maintenance operations are carried out as necessary to keep the works in a tidy condition throughout the maintenance period.
- Weed control:** Remove all weed growth by hand or treat with spot herbicide applications, taking care to avoid spray drift. All arisings to be removed from site.
- Litter removal:** Remove from site all litter and other debris during each maintenance visit.
- Pruning:** Prune off dead, damaged, diseased or misshapen growth from shrubs and trees to promote good habit and shape.
- Replacement:** Replace or make good immediately, any soft landscape item that fails, or does not develop full foliage during the maintenance period.
- Watering:** Water soft landscape items as necessary throughout the maintenance period, to ensure establishment. Replace or make good immediately, any soft landscape item that fails due to lack of water.

PLANT SCHEDULE

SHRUBS

QTY	CODE	PLANT NAME	STOCK	SIZE	SPACING
15No.	Abe FM	Abelia x grandiflora 'Francis Mason'	C 3L	30-40cm	3/m2
3No.	Cho Azt 10L	Choisya ternata 'Aztec Pearl'	C 10L	40-60cm	1/m2
9No.	Cis May	Cistus 'May Snow'	C 3L	20-30cm	3/m2
11No.	Heb Red	Hebe 'Red Edge'	C 3L	20-30cm	4/m2
9No.	Heb Mar	Hebe 'Marjorie'	C 3L	40-60cm	3/m2

HERBACEOUS PLANTS

QTY	CODE	PLANT NAME	STOCK	SPACING
15No.	Sal Car	Salvia nemorosa "Caradonna"	C 2L	5/m2
40No.	Sed das	Sedum dasyphyllum	C 1L	5/m2

TREES

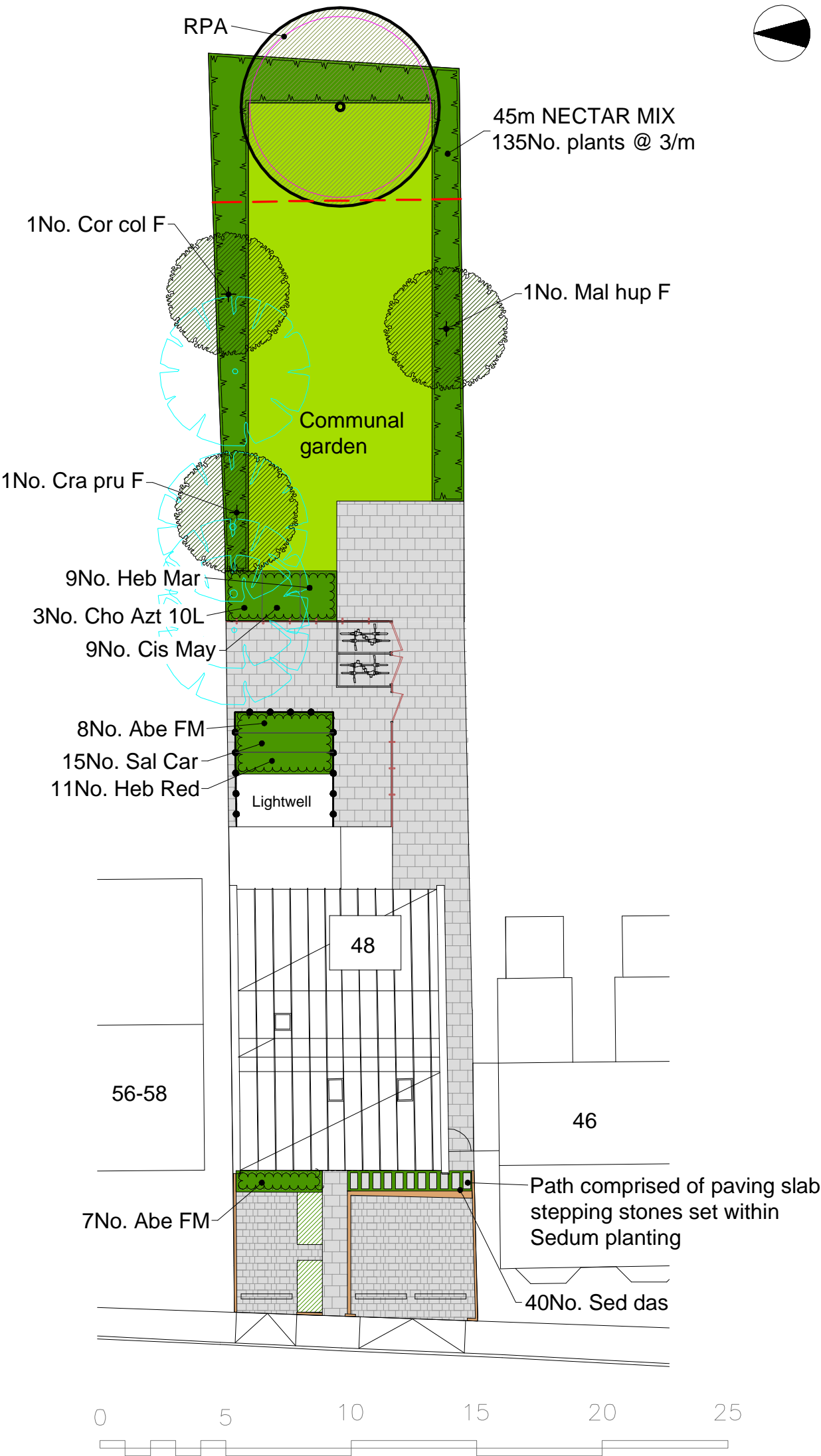
QTY	CODE	PLANT NAME	STOCK	FORM	GIRTH/HEIGHT
1No.	Cor col F	Corylus columna	C 15L	FTH	180-200cm
1No.	Cra pru F	Crataegus prunifolia	C 15L	FTH	150-180cm
1No.	Mal hup F	Malus huphensis	C 15L	FTH	150-180cm

HEDGE MIXES

PERCENT	QTY	PLANT NAME	STOCK	SIZE
45m NECTAR MIX planted @ 3/m in a Single Row				
20%	27No.	Berberis thunbergii	C 2L	45-60cm
20%	27No.	Cornus alba	C 2L	45-60cm
20%	27No.	Cotoneaster lacteus	Bare root	60-90cm
20%	27No.	Escallonia 'Apple Blossom'	C 2L	45-60cm
20%	27No.	Ligustrum vulgare	Bare root	60-90cm
Plant in groups of 3-7 of single species				

NOTES AND ABBREVIATIONS:

C = Container (or pot) grown, followed by size of the container (or pot).
FORM = Shape of tree as supplied by the nursery.
Fth = Feather.
QTY = Quantity
STOCK = Root condition/protection method eg Bare root.
- Refer to specification for further information.
- All plants to be completely hardened off
- Substitutions to be agreed with Landscape Architect.
Plant Schedule generated by "Qscape" software 21/06/2023



KEY

Existing ash tree to be retained

Conifer screen to be removed

Tree Protection Barrier - refer to accompanying Arboricultural Method Statement

Proposed trees

Proposed hedges

Proposed shrub planting

Lawn

Pre-cast concrete slab paving

Tegula or equivalent block paving

Timber close boarded fence, 1.8m high with matching lockable gates

Black metal railings 1.2m high

Low retaining wall

Green roof bin store

Revisions :

Land & Sculpture Design Partnership

LANDSCAPE ARCHITECTURE · SCULPTURE · ARBORICULTURE

SITE : 48 Albert Road, Yiewsley
DRG : Landscape Proposal / Tree Protection Plan
DRN BY : GH
SCALE : 1:200 @ A2
DATE : June 2023
No : LSDP 2083.01

OCTAGON HOUSE · THE WATER RUN · HITCHAM · IPSWICH · IP7 7LN
T : 01449 740272 · E : Giles@LSDP.uk