

Waterside House & Riverview House, Uxbridge

Facade Materiality





Document Control

Project Title:	Waterside House & Riverview House, Uxbridge
Project Ref:	1153
Report Title:	Facade Materiality
Report Ref:	P934
Revision:	4
Date of Issue:	November 2022
Purpose of Issue:	Information
Compiled By:	Beatriz Antuna Tentor
Reviewed By:	Ben Paterson
Review Date:	21-11-22
File Location:	-

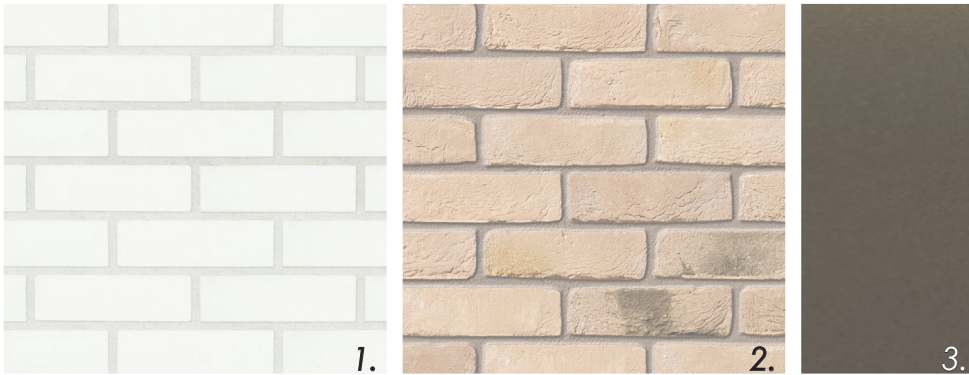
0.0 Facade Materiality

0.1 Facade Materiality

Our approach to the selection of the proposed materials seeks to enhance the aesthetic of the design through carefully selected materials and textures that respond to the different areas of the facade, outlining and enhancing its identity within the site as well as achieving the best suited option within the buildability of the project.

The selected brickwork consists of two plain running bond bricks, in which the white brick grid is formed by full bricks with mixed cream bricks installed within the openings of the facade. For the aluminium cladding, frames and elements, an architectural matt bronze Interpon powder coating has been selected .

- 1. Bespoke brick - White Smooth
- 2. Ibstock - Dinian Blend
- 3. Interpon D2525 - Anodic Bronze - Y2214F



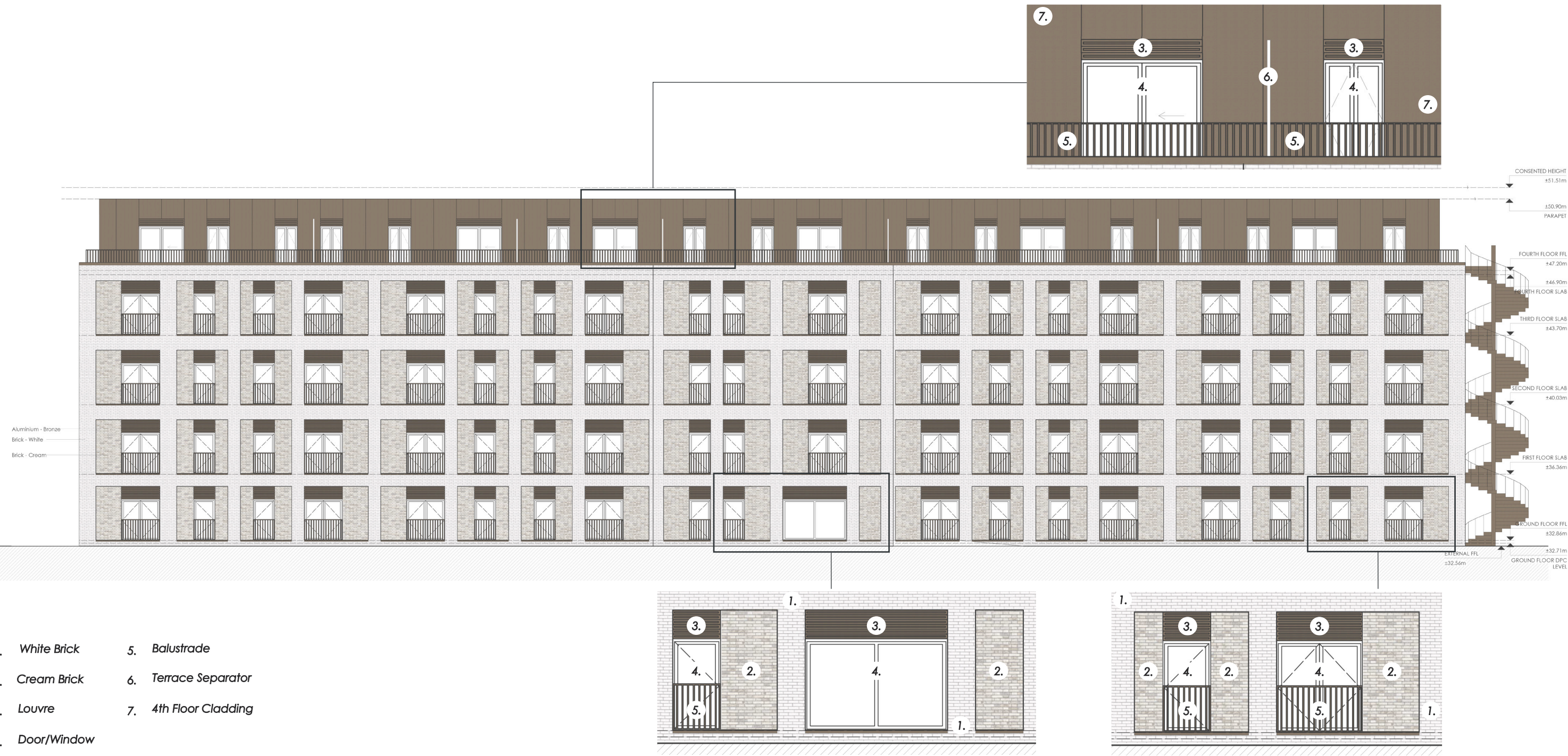
Proposed Material Palette



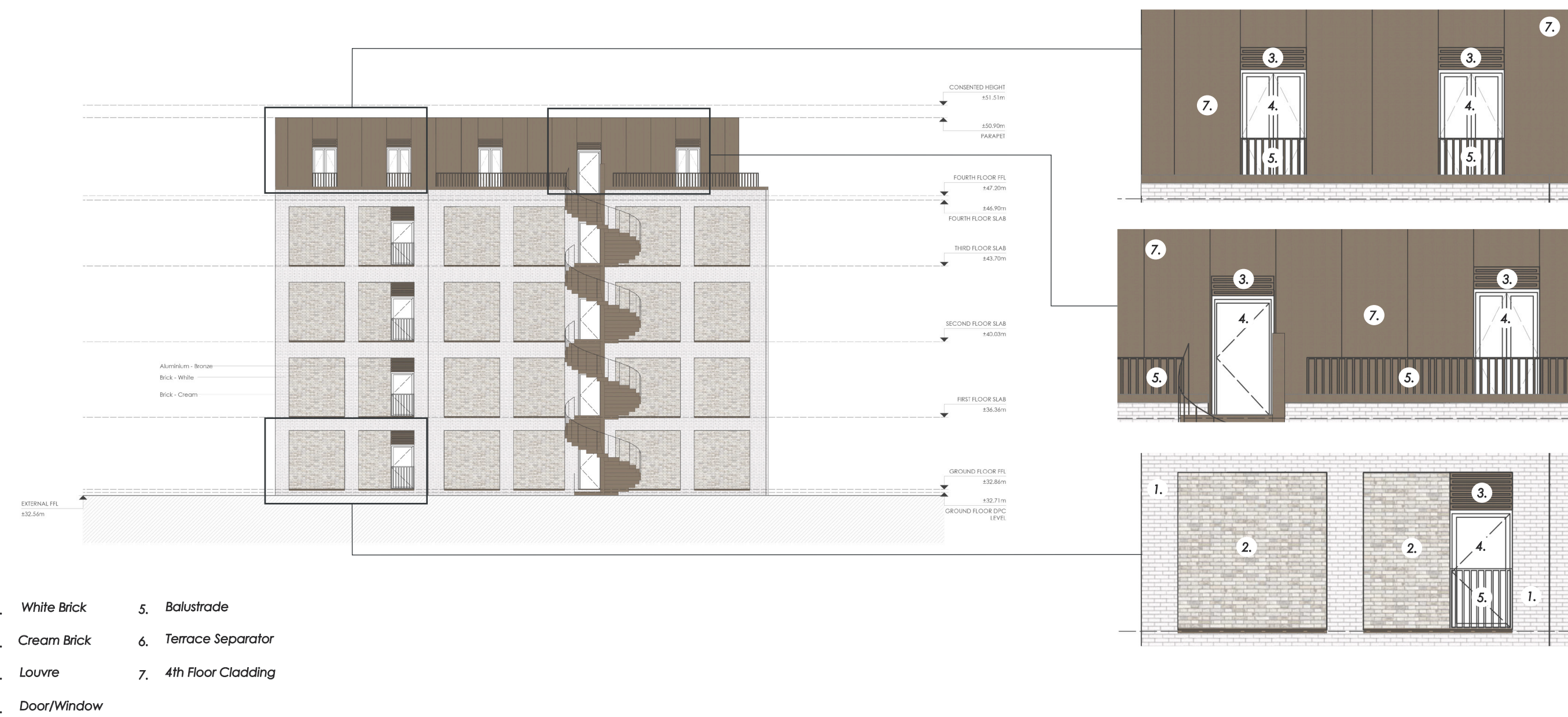
Proposed Design and Application Reference Elevation

1.0 Elevations

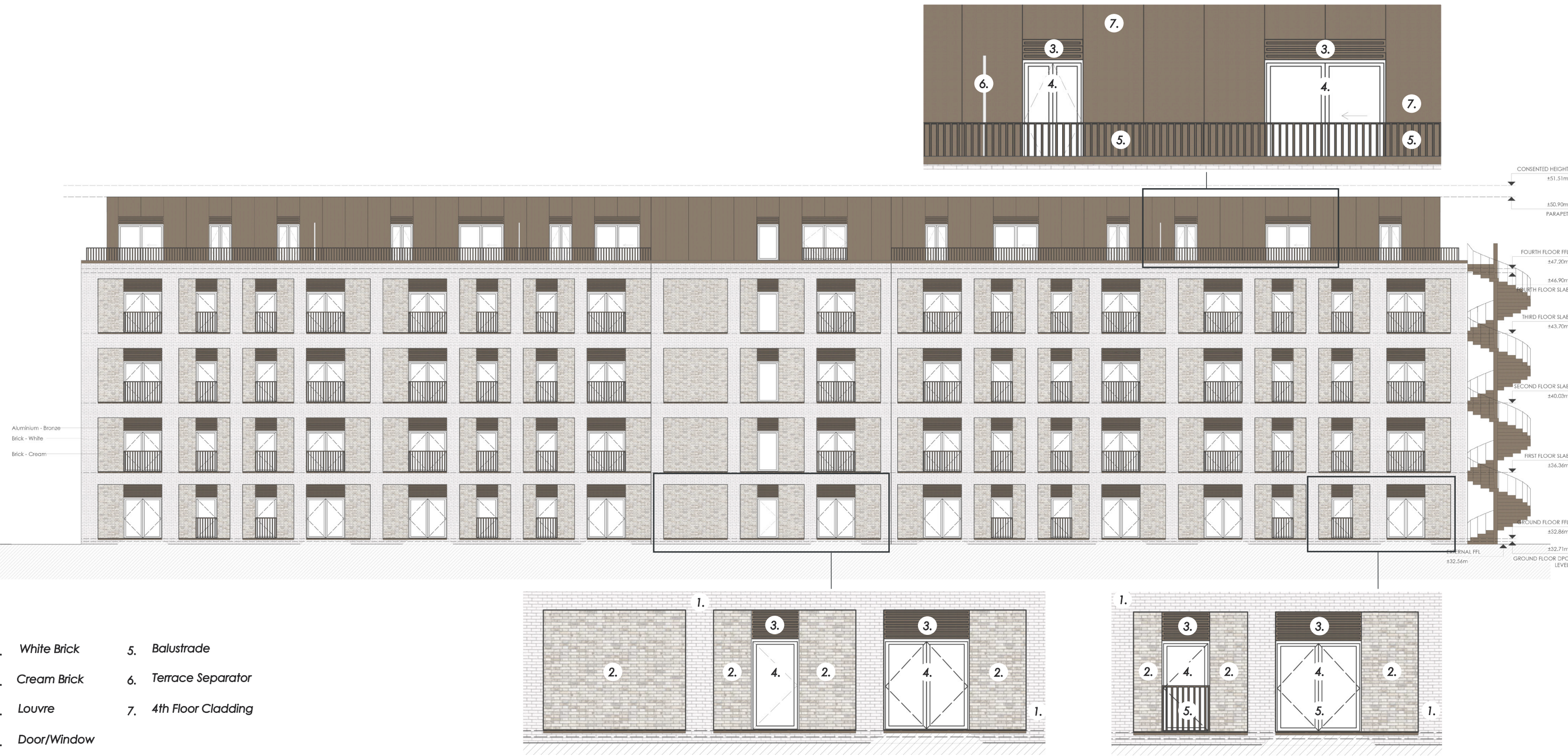
1.1 Elevations



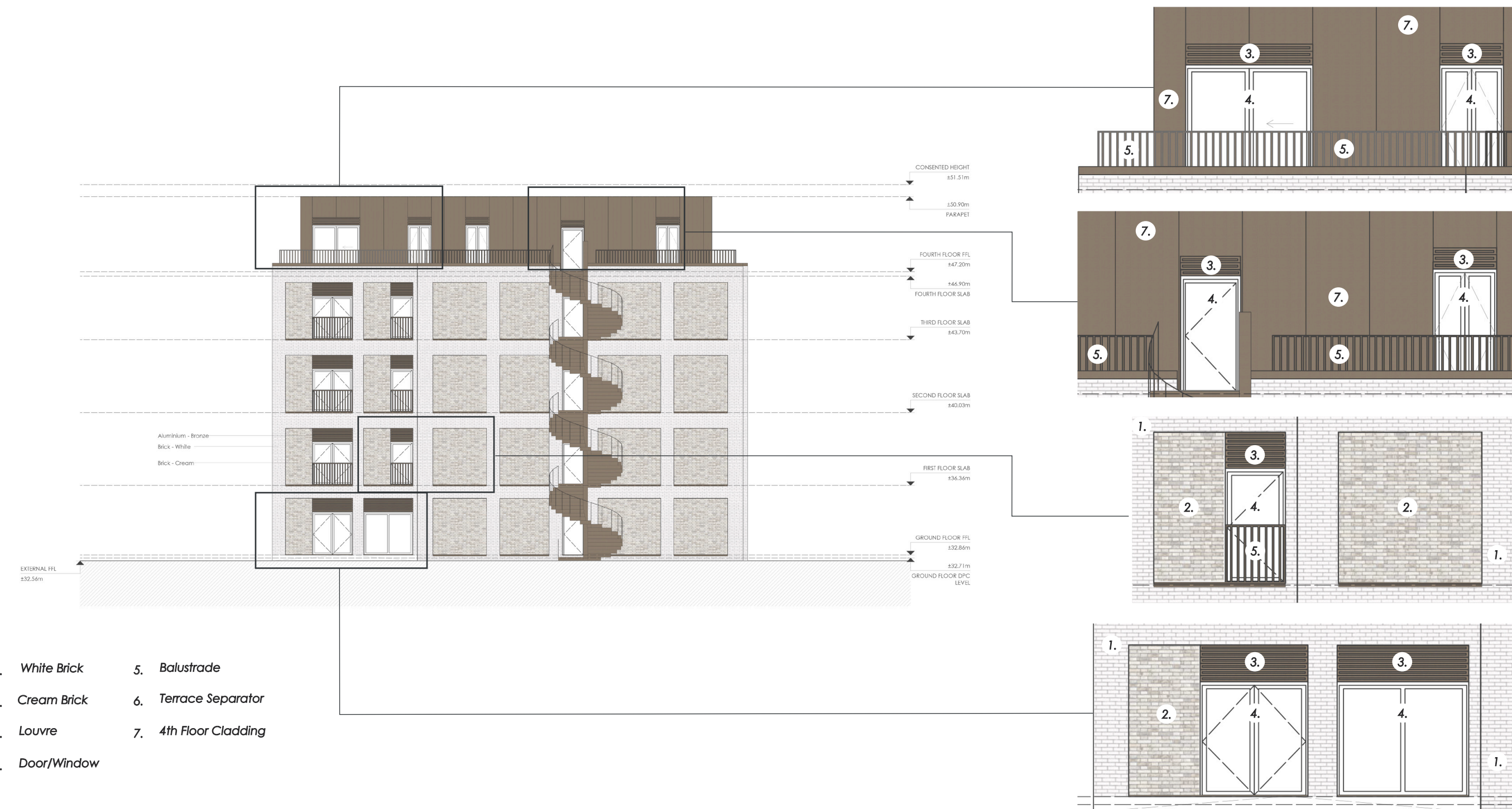
1.2 Elevations



1.3 Elevations



1.4 Elevations



2.0 Elements & Materiality

2.1 Elements & Materiality

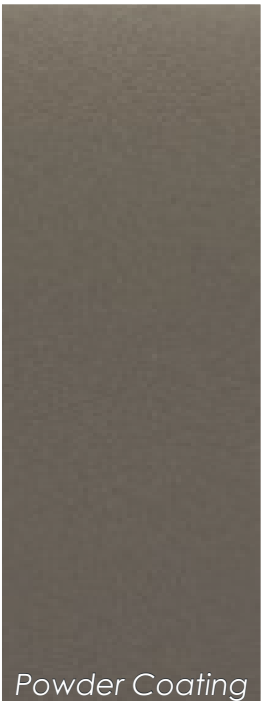
In this section we have identified the individual elements of the facade and related them to the materiality/ finish proposed, numbered as per the indicated elements on the facade elevations.

1 - As previously stated, a smooth finish white brick laid in stretcher bond is proposed for the main grid element of the facade. *White Smooth* from Bespoke Brick achieves the ideal look and requirements for this element.

2 - For the stepped back panel elements surrounding the glazing within the facade, a differently textured cream brick achieves the desired contrast with the proposed surrounding white brick. *Dinian Blend* from Ibstock achieves the desired mixed look through light differences in tone and its slightly rougher finish distinguishes it effectively from its adjoining materials.

3 - Louvered spandrels are proposed above proposed openings in order to create a homogeneous look within the areas of services and ventilation. All aluminium elements have been proposed to be powder coated in *Anodic Bronze - Y2214F* from Interpon range D2525 in order to achieve a consistent materiality across the facade.

4 - All doors and window openings are proposed to be aluminium frame powder coated in *Anodic Bronze - Y2214F* from Interpon range D2525. Achieving the desired continuous look between these and the louvres immediately above.



2.2 Elements & Materiality Cont'd

5 - Steel Flat Bar Balustrade proposed to be fixed to either side to juliet balconies and face fixed to inside face of 4th floor parapet wall. To be powder coated in *Anodic Bronze - Y2214F* from Interpon range D2525. Achieving the desired continuous look between all elements of the facade relating to openings.

6 - Fourth floor terrace dividers to achieve privacy between dwellings. Dividers to chamfer away from the external railing to avoid interrupting desired view line. To be powder coated in *Anodic Bronze - Y2214F* from Interpon range D2525 to visually merge with proposed cladding to 4th floor.

7 - Proposed rainscreen cladding to 4th floor to be powder coated in *Anodic Bronze - Y2214F* from Interpon range D2525, in keeping with the mentioned look and materiality throughout the facade.

In combination, the elements of the facade achieve a consistent look with three distinct finishes that compliment each other and identify the different elements in a successful way.

No development shall take place until details of all materials and external surfaces, windows, doors and including details of balconies have been submitted to and approved in writing by the Local Planning Authority. Thereafter the development shall be constructed in accordance with the approved details and be retained as such. Details should include information relating to make, product/type, colour and photographs/images.

