

THIS DRAWING IS COPYRIGHT AND IS ISSUED ON CONDITION THAT IT IS NOT COPIED, REPRODUCED OR DISCLOSED TO A THIRD PARTY WITHOUT THE CONSENT IN WRITING OF BALMORAL INDUSTRIAL TANKS LTD

THIRD ANGLE PROJECTION

ALL DIMENSIONS IN MILLIMETRES, UNLESS STATED OTHERWISE - DO NOT SCALE - IF IN DOUBT, ASK

ALL MEASUREMENTS ARE FOR REFERENCE ONLY
BALMORAL TANKS RESERVE THE RIGHT TO REVISE THEIR PRODUCT DESIGNS AND SUPPORTING INFORMATION AT ANY TIME

TO VIEW THE TANK IN 3D SCAN QR CODE OR VISIT: <https://autode.sk/43n8Tem>

TANK SPECIFICATION

TANK TYPE:	Std. Epoxy efusiOn	NUTCAP TYPE:	None
SHELL COLOUR (EXT.):	BS12B29 (JUNIPER GREEN)	SHELL COLOUR (INT.):	VGBLUE (VANGUARD BLUE)
CONTENTS:	Leachate	SPECIFIC GRAVITY:	1.05
MAX. OPERATING TEMP.:	AMBIENT	SEALANT:	Saba Ecoseal Bio HM - Black
STARTER RING:	No	ROOF TYPE:	Trough Deck (Self Supported)
LIVE LOAD (IMPOSED):	0.75 kN/m ²	ROOF LOADING (DEAD):	0.25 kN/m ²
OPERATING PRESSURE:	N/A	TEST PRESSURE:	N/A
OPERATING VACUUM:	N/A	TEST VACUUM:	N/A
DESIGN STD. (HOOP):	Eurocode	DESIGN STD. (WIND):	Eurocode
SEISMIC ACCELERATION:	N/A	WIND SPEED LOADING:	22.0 m/s
NOMINAL VOLUME:	543.3 m ³	WORKING VOLUME:	511.0 m ³

ANGLE SPECIFICATION

TOP ANGLE SPEC.:	60x60x6	BTM ANGLE SPEC.:	70x70x6
TOP ANGLE MATERIAL:	MS S275	BTM ANGLE MATERIAL:	MS S275
TOP ANGLE FINISH:	GALV. BS EN ISO 1461	BTM ANGLE FINISH:	GALV. BS EN ISO 1461
TOP ANGLE TYPE:	Joiner Toe Out	ANCHOR TYPE:	M12x150 L.G. R.-XPT

FOUNDATION SPECIFICATION


FOUNDATION TYPE:	Flat Base	REBATE DEPTH:	0
------------------	-----------	---------------	---

ROOF SPECIFICATION

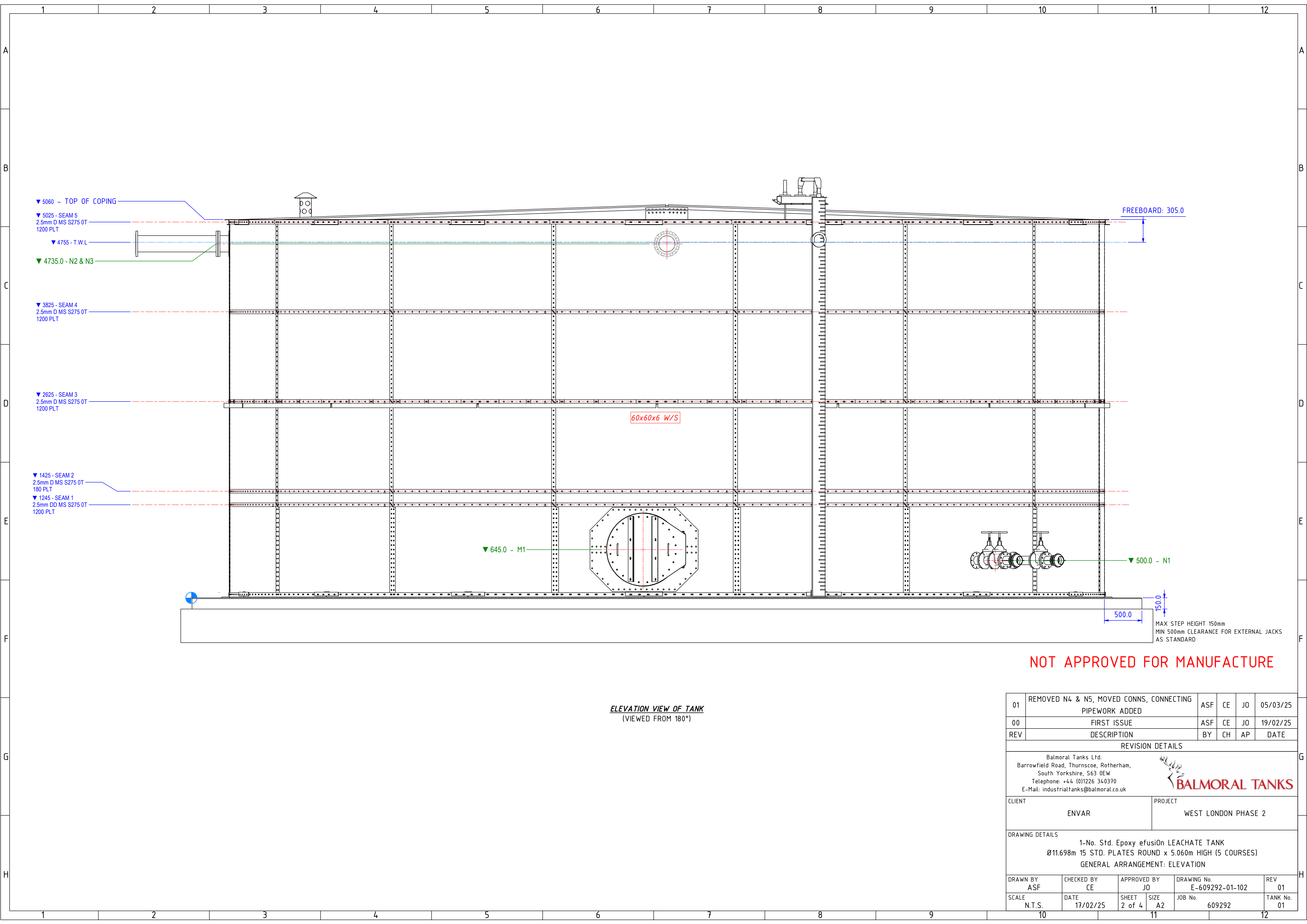
ROOF TYPE:	Trough Deck (Self Supported)	SINGLE/DOUBLE PAINTED:	DOUBLE
PURLIN SPEC:	TBC	ROOF SHEET COLOUR:	10A05 (GREY)
PURLIN FINISH:	EPOXY COATED STEEL	FLASHING COLOUR:	BS12B29 (JUNIPER GREEN)

FOR SHELL SPEC. REF: STRUCTURAL
CALCS REPORT: E-609292-01_02-SRS-P01

NOT APPROVED FOR MANUFACTURE


01	REMOVED N4 & N5, MOVED CONNS, CONNECTING PIPEWORK ADDED	ASF	CE	JO	05/03/25
00	FIRST ISSUE	ASF	CE	JO	19/02/25
REV	DESCRIPTION	BY	CH	AP	DATE
REVISION DETAILS					
<div>Balmoral Tanks Ltd. Barrowfield Road, Thurnscoe, Rotherham, South Yorkshire, S63 0EW Telephone: +44 (0)1226 340370 E-Mail: industrialtanks@balmoral.co.uk</div> <div></div>					
CLIENT ENVAR		PROJECT WEST LONDON PHASE 2			
DRAWING DETAILS 1-No. Std. Epoxy efusiOn LEACHATE TANK Ø11.698m 15 STD. PLATES ROUND x 5.060m HIGH (5 COURSES) GENERAL ARRANGEMENT: TANK PLAN					
DRAWN BY ASF	CHECKED BY CE	APPROVED BY JO	DRAWING No. E-609292-01-101		REV 01
SCALE N.T.S.	DATE 17/02/25	SHEET 1 of 4	SIZE A2	JOB No. 609292	TANK No. 01

CUSTOMER TANK REF:
TANK 3



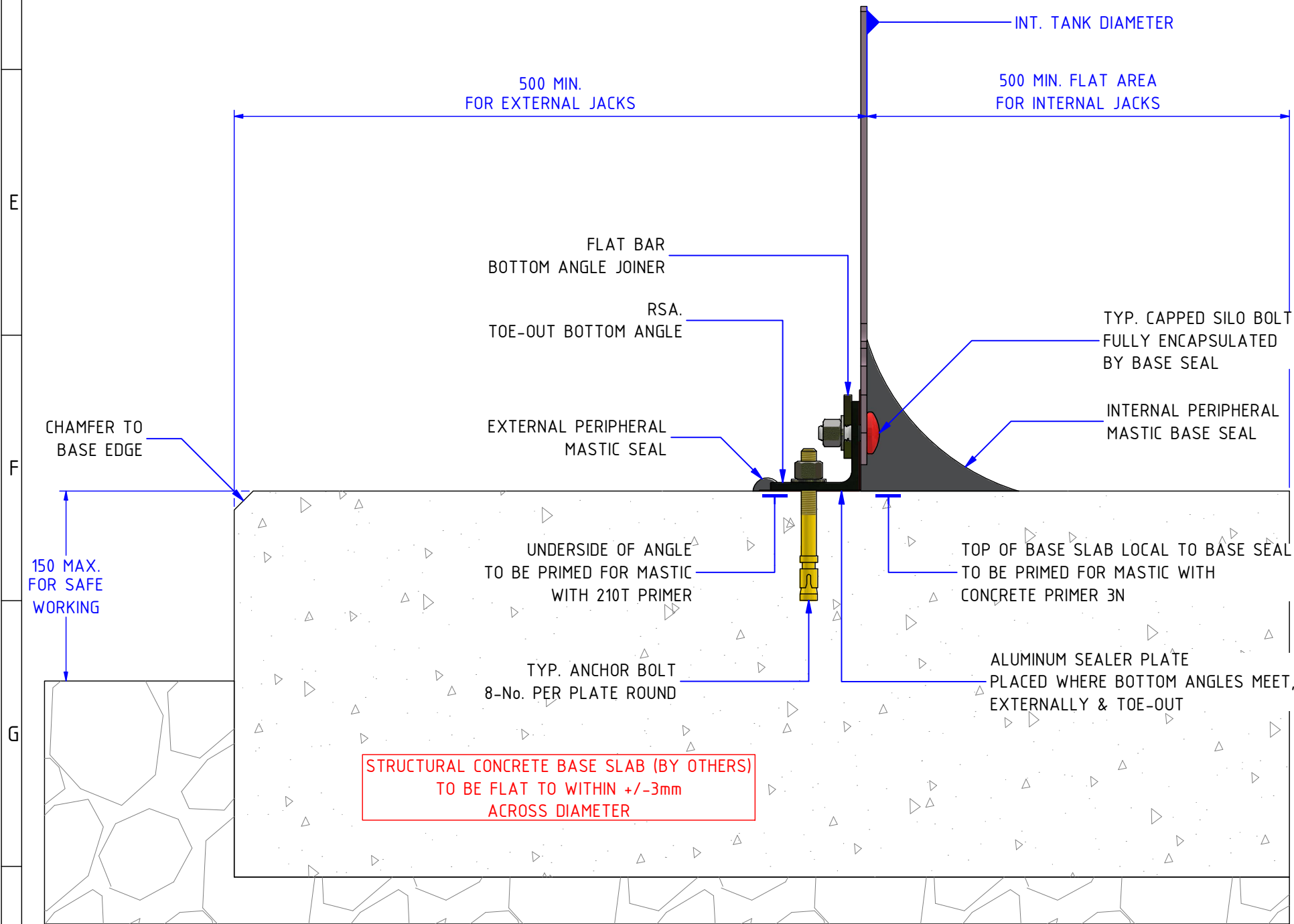
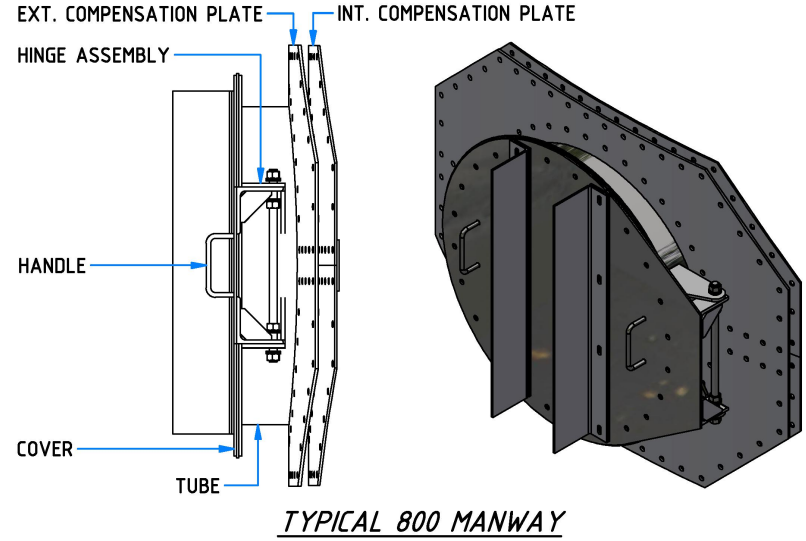
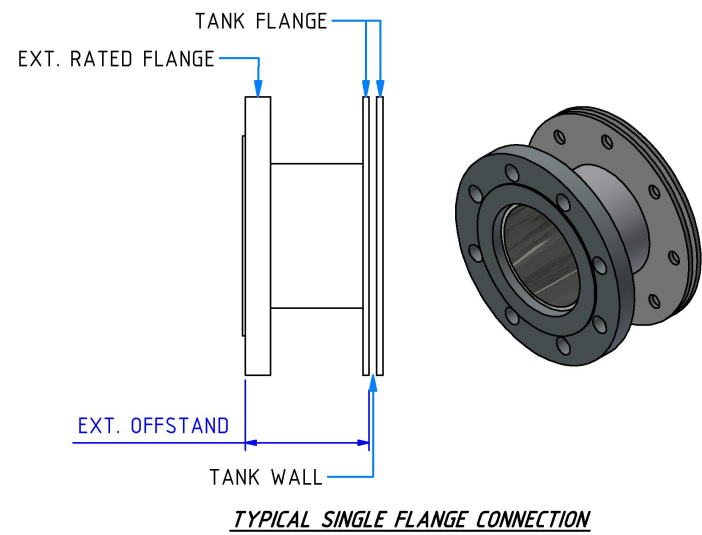
ELEVATION VIEW OF TANK
(VIEWED FROM 180°)

NOT APPROVED FOR MANUFACTURE

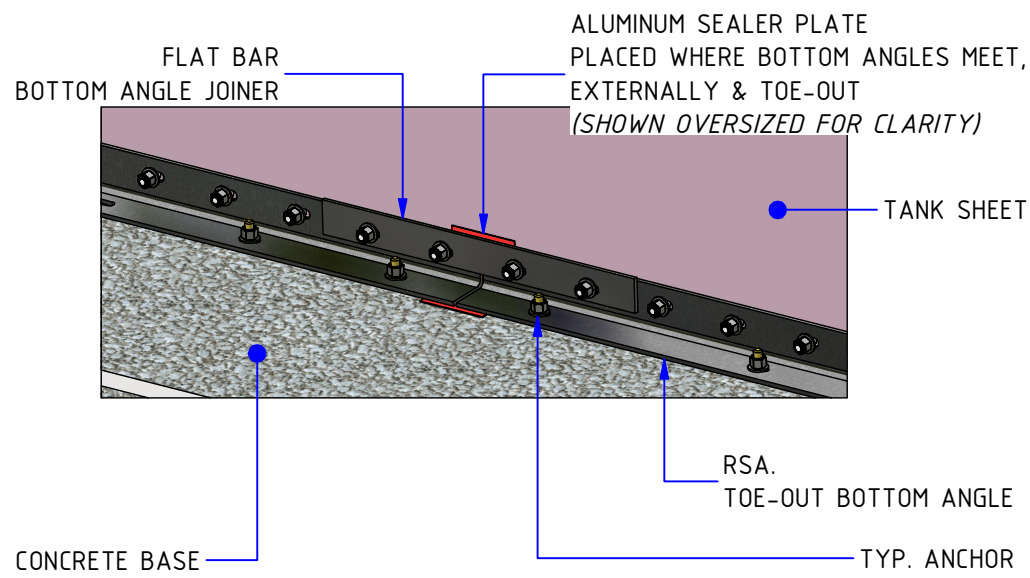
01	REMOVED N4 & N5, MOVED CONNS, CONNECTING PIPEWORK ADDED		ASF	CE	JO	05/03/25
00	FIRST ISSUE		ASF	CE	JO	19/02/25
REV	DESCRIPTION		BY	CH	AP	DATE
REVISION DETAILS						
<div>Balmoral Tanks Ltd. Barrowfield Road, Thurnscoe, Rotherham, South Yorkshire, S63 0EW Telephone: +44 (0)1226 340370 E-Mail: industrialtanks@balmoral.co.uk</div> <div>BALMORAL TANKS</div>						
CLIENT ENVAR			PROJECT WEST LONDON PHASE 2			
DRAWING DETAILS 1-No. Std. Epoxy efusiOn LEACHATE TANK Ø11.698m 15 STD. PLATES ROUND x 5.060m HIGH (5 COURSES) GENERAL ARRANGEMENT: ELEVATION						
DRAWN BY ASF	CHECKED BY CE	APPROVED BY JO	DRAWING No. E-609292-01-102		REV 01	
SCALE N.T.S.	DATE 17/02/25	SHEET 2 of 4	SIZE A2	JOB No. 609292	TANK No. 01	

1	2	3	4	5	6	7	8	9	10	11	12
SHELL CONNECTION SCHEDULE											
CLIENT REF:	DUTY / DESCRIPTION:		MATERIAL / FINISH:	SIZE (mm):	FLANGE RATING:	SINGLE / DOUBLE:	OFFSTAND (EXT/INT):	ELEVATION:	ANGLE:	ADPT. BRKT.:	BLANK FLANGE TYPE:
M1	MANWAY c/w HINGE (RH)		E-M-S	800	N/A	N/A	200	645	183.00°	N/A	N/A
N1	TANK DRAIN (c/w GATE VALVE)		E-M-S	DN100	PN16	SINGLE	150	500	135.00°	N	N
N2	OUTLET (CUT ON SITE)		E-M-S	DN200	PN16	SINGLE	150	4735	270.00°	N	N
N3	INLET (CUT ON SITE)		SS316	DN200	PN16	SINGLE	150	4735	0.00°	N	N
P1	CONNECTING EXTERNAL PIPEWORK ON N2 [TANK 3 - TANK 4]		SS316	DN200 [LENGTH - 1100mm]	PN16	N/A	N/A	4735	N/A	N	N/A
P2	CONNECTING EXTERNAL PIPEWORK ON N3 [TANK 2 - TANK 3]		SS316	DN200 [LENGTH - 800mm]	PN16	N/A	N/A	4735	N/A	N	N/A
R1	CAT & MOUSE LEVEL GAUGE		-	-	-	-	-	TOP OF COPING	160.00°	N/A	N/A
V1	MUSHROOM ROOF VENT [c/w BIRD MESH]		GRP	DN150	-	-	-	R-5000	285.00°	N/A	N/A

- CONNECTION SCHEDULE POINTS:
- i. ALL WALL CONNECTION LEVELS ARE GIVEN TO CENTRE LINES FROM F.F.L. OF CONCRETE BASE AND ARE IN MILLIMETERS.
 - ii. ALL CONNECTIONS MUST MISS VERTICAL & HORIZONTAL SEAMS; CONNECTIONS RELOCATED TO AVOID CLASHING WITH SEAMS ARE MARKED WITH 'x'.
 - iii. ALL RATED FLANGES TO BE RAISED-FACE UNLESS STATED OTHERWISE.
 - iv. ALL MANWAYS AND CONNECTIONS THAT ARE DN450 AND ABOVE MUST BE PLACED IN THE CENTRE OF THE SHEET.




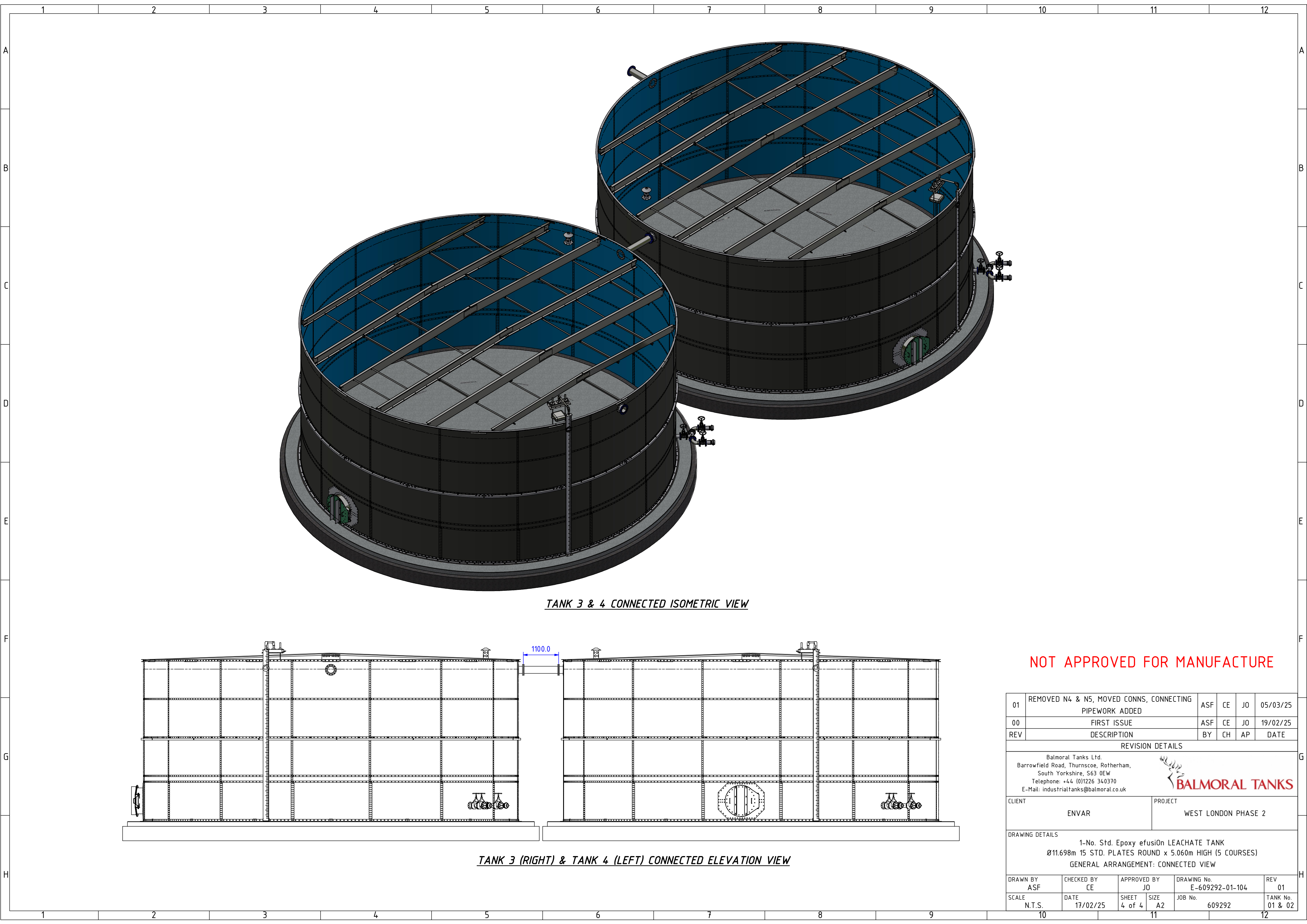
BASE EDGE DETAIL
FLAT TO BASE
NOTE
FOR ANCHOR, BOTTOM ANGLE & JOINER SPEC.
REF. SPECIFICATION TABLE ON GA DRAWING PAGE 1



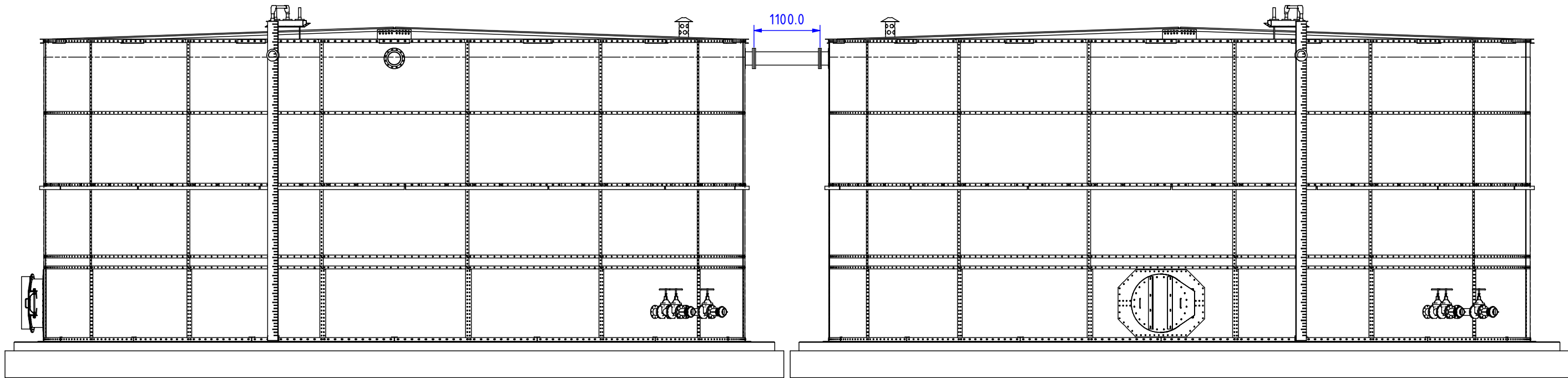
EXTERNAL VIEW OF TANK
FOR ANCHOR, BOTTOM ANGLE & JOINER SPEC.
REF. SPECIFICATION TABLE ON GA DRAWING PAGE 1

NOT APPROVED FOR MANUFACTURE

01	REMOVED N4 & N5, MOVED CONNS, CONNECTING PIPEWORK ADDED	ASF	CE	JO	05/03/25
00	FIRST ISSUE	ASF	CE	JO	19/02/25
REV	DESCRIPTION	BY	CH	AP	DATE
REVISION DETAILS					
<div>Balmoral Tanks Ltd. Barrowfield Road, Thurnscoe, Rotherham, South Yorkshire, S63 0EW Telephone: +44 (0)1226 340370 E-Mail: industrialtanks@balmoral.co.uk</div> <div></div>					
CLIENT ENVAR		PROJECT WEST LONDON PHASE 2			
DRAWING DETAILS 1-No. Std. Epoxy efusiOn LEACHATE TANK Ø11.698m 15 STD. PLATES ROUND x 5.060m HIGH (5 COURSES) GENERAL ARRANGEMENT: CONN. SCHEDULE & BASE DETAIL					
DRAWN BY ASF	CHECKED BY CE	APPROVED BY JO	DRAWING No. E-609292-01-103		REV 01
SCALE N.T.S.	DATE 17/02/25	SHEET 3 of 4	SIZE A2	JOB No. 609292	TANK No. 01




TANK 3 & 4 CONNECTED ISOMETRIC VIEW



TANK 3 (RIGHT) & TANK 4 (LEFT) CONNECTED ELEVATION VIEW

NOT APPROVED FOR MANUFACTURE

01	REMOVED N4 & N5, MOVED CONNS, CONNECTING PIPEWORK ADDED	ASF	CE	JO	05/03/25
00	FIRST ISSUE	ASF	CE	JO	19/02/25
REV	DESCRIPTION	BY	CH	AP	DATE
REVISION DETAILS					
Balmoral Tanks Ltd. Barrowfield Road, Thurnscoe, Rotherham, South Yorkshire, S63 0EW Telephone: +44 (0)1226 340370 E-Mail: industrialtanks@balmoral.co.uk					
CLIENT		PROJECT			
ENVAR		WEST LONDON PHASE 2			
DRAWING DETAILS					
1-No. Std. Epoxy efusiOn LEACHATE TANK Ø11.698m 15 STD. PLATES ROUND x 5.060m HIGH (5 COURSES) GENERAL ARRANGEMENT: CONNECTED VIEW					
DRAWN BY ASF	CHECKED BY CE	APPROVED BY JO	DRAWING No. E-609292-01-104		REV 01
SCALE N.T.S.	DATE 17/02/25	SHEET 4 of 4	SIZE A2	JOB No. 609292	TANK No. 01 & 02