

5 6 7 8 9 10 11 12

CONNECTIONS

CONN.	REF.	DESCRIPTION	SIZE:	GRADE:	FLANGE RATING:	SINGLE / DOUBLE:	OFFSTAND (INT/EXT):	ELEVATION:	ANGLE:	ADPT BRKT (INT/EXT)	BLANK FLANGE TYPE:
N1	N1	INLET [C/W GATE VALVE]	100	SS316	PN16	SINGLE	150	500	180°	No	No
N2	N2	OUTLET [C/W GATE VALVE]	200	SS316	PN16	SINGLE	150	4735	270°	No	No
V1	V1	MUSHROOM ROOF VENT [C/W BIRD MESH]	150mm	GRP	-	-	-	ROOF [RADIUS: 5000mm]	285°	N/A	N/A
R1	R1	CAT & MOUSE LEVEL GAUGE	-	-	-	-	-	N/A	160°	N/A	N/A
M1	M1	MANWAY E-FUSION 800 DIA	800	E-FUSION	-	-	200	630	228°	N/A	N/A

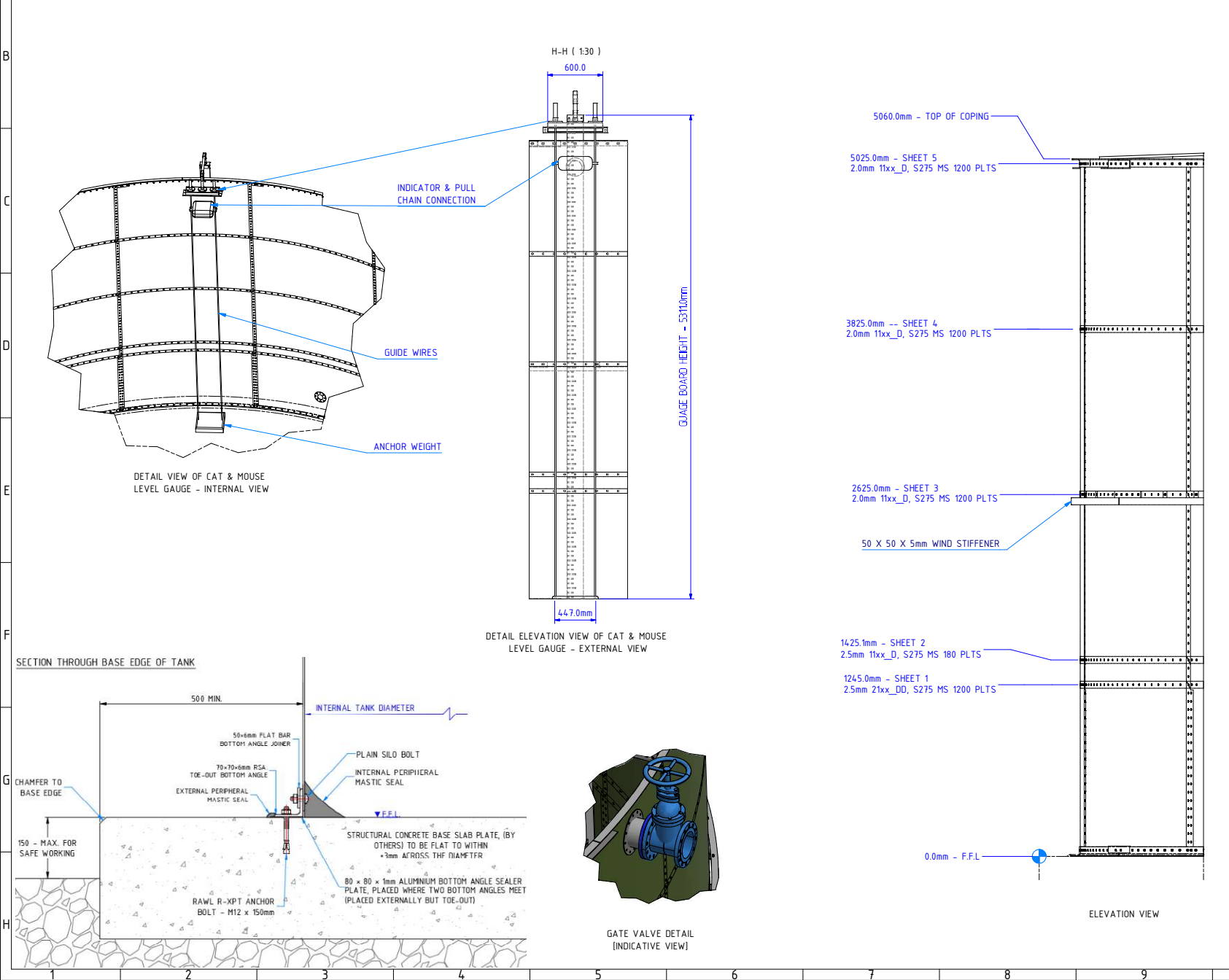
THIS DRAWING IS COPYRIGHT AND IS ISSUED ON CONDITION THAT IT IS NOT COPIED, REPRODUCED OR DISCLOSED TO A THIRD PARTY WITHOUT THE CONSENT IN WRITING OF BALMORAL INDUSTRIAL TANKS LTD

FIRST ANGLE PROJECTION

THIRD ANGLE PROJECTION

ALL DIMENSIONS IN MILLIMETRES, ALL LEVELS IN METRES, UNLESS STATED OTHERWISE - DO NOT SCALE - IF IN DOUBT, ASK

ALL MEASUREMENTS ARE FOR REFERENCE ONLY
BALMORAL TANKS RESERVE THE RIGHT TO REVISE THEIR PRODUCT DESIGNS AND SUPPORTING INFORMATION AT ANY TIME



TANK SPECIFICATION

TANK TYPE:	Std. Epoxy efusiOn		
CONTENTS:	Water	SHELL COLOUR:	BS12B29
STARTER RING:	False		
SEISMIC ACCELERATION:	N/A	SPECIFIC GRAVITY:	1.05
MAX. OPERATING TEMP:	N/A	ROOF TYPE:	Trough Deck (Self Supported)
LIVE LOADING (IMPOSED):	0.75kN/m²	ROOF LOADING (DEAD):	0.25 kN/m²
OPERATING PRESSURE:	N/A	WIND SPEED LOADING:	22 m/s
OPERATING VACUUM:	N/A	TEST PRESSURE:	N/A
DESIGN STANDARD (HOOP):	EUROCODE	TEST VACUUM:	N/A
TERRAIN:	RURAL	DESIGN STANDARD (WIND):	EUROCODE
NUT CAP TYPE:	None	SEALANT:	Saba Ecosseal Bio HM - Black

ANGLE SPECIFICATIONS

TOP ANGLE SPEC.:	60x60x6	BOTTOM ANGLE SPEC.:	70x70x6
TOP ANGLE MATERIAL:	MS	BOTTOM ANGLE MATERIAL:	MS
TOP ANGLE FINISH:	GALV	BOTTOM ANGLE FINISH:	GALV
TOP ANGLE TYPE:	Joiner Toe Out	BOTTOM ANGLE ANCHOR:	8 x M12 R-XPT - 120 TOTAL

FOUNDATION SPECIFICATION

FOUNDATION TYPE:	Flat Base	REBATE DEPTH:	0mm
JACK TYPE:	MECHANICAL	No JACKS	8

MANWAY 1 SPECIFICATION

SIZE	HINGED	MATERIAL	COATING	COLOUR
800	YES	E-FUSION	BITLPPS.04	12-B-29 (Juniper Green)

NOT APPROVED FOR MANUFACTURE

02	UPDATED PIPEWORK SPECIFICATION	JB	DOC	DOC	08/06/22
01	UPDATED CONNECTION POSITIONS + ADDED PIPEWORK	JB	JO	DOC	24/05/22
00	FIRST ISSUE	JB	JO	BH	19/04/22
REV	DESCRIPTION	BY	CH	AP	DATE

REVISION DETAILS

Balmoral Tanks Ltd.
Barrowfield Road, Thurnscoe, Rotherham,
South Yorkshire, S63 9EW
Telephone: +44 (0)1226 340370
E-Mail: industrialtanks@balmoral.co.uk

BALMORAL TANKS

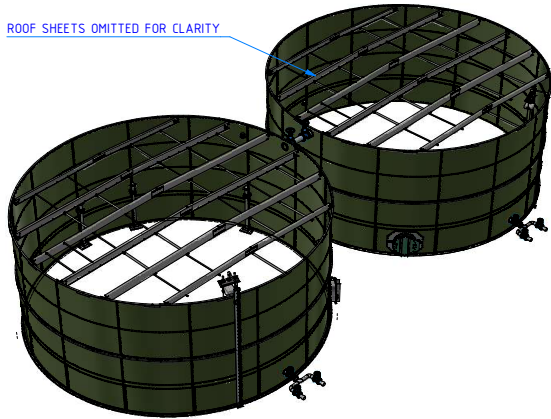
CLIENT	ENVAR COMPOSTING LTD	PROJECT	LONDON
--------	----------------------	---------	--------

DRAWING DETAILS

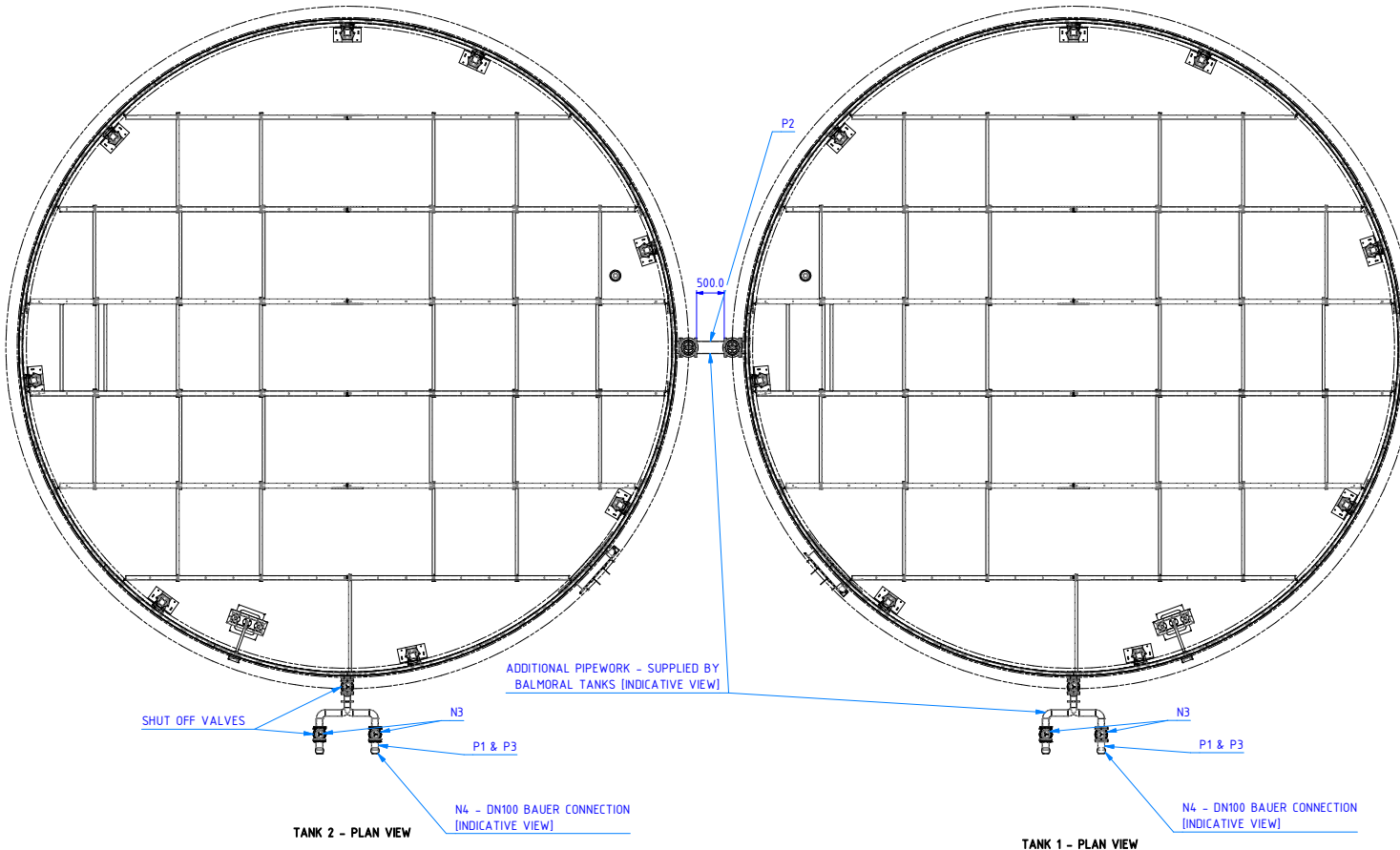
1-No. Std. Epoxy efusiOn LEACHATE TANK
Ø11,698mm 15 PLATES ROUND x 5,050mm HIGH 5 COURSES HIGH
GENERAL ARRANGEMENT: TANK PLAN

DRAWN BY	JB	CHECKED BY	JO	APPROVED BY	BH	DRAWING No.	E-605817-01-102	REV	02		
SCALE	N.T.S.	DATE	19/04/22	SHEET	2 of 6	SIZE	A2	JOB No.	E-605817	TANK No.	01

ROOF SHEETS OMITTED FOR CLARITY



3D ISOMETRIC VIEW



CONNECTIONS

CONN.	REF.	DESCRIPTION	SIZE:	GRADE:	FLANGE RATING:	SINGLE / DOUBLE:	OFFSTAND (INT/EXT):	ELEVATION:	ANGLE:	ADPT BRKT (INT/EXT)	BLANK FLANGE TYPE:
N1	N1	INLET [C/W GATE VALVE]	100	SS316	PN16	SINGLE	150	500	180°	No	No
N2	N2	OUTLET [C/W GATE VALVE]	200	SS316	PN16	SINGLE	150	4735	270°	No	No
V1	V1	MUSHROOM ROOF VENT [C/W BIRD MESH]	150mm	GRP	-	-	-	ROOF [RADIUS: 5000mm]	285°	N/A	N/A
R1	R1	CAT & MOUSE LEVEL GAUGE	-	-	-	-	-	N/A	160°	N/A	N/A
M1	M1	MANWAY E-FUSION 800 DIA	800	E-FUSION	-	-	200	630	228°	N/A	N/A

PIPEWORK SCHEDULE

REF.	DESCRIPTION	MATERIAL / FINISH	SIZE	QUANTITY
N3	GATE VALVE	DUCTILE IRON	DN100	2 PER TANK
N4	BAUER CONNECTION	SS316	DN100	1 PER TANK
P1	EXTERNAL PIPEWORK [DETAILS TBC]	TBC	DN100 [LENGTH TBC]	TBC
P2	EXTERNAL PIPEWORK [DETAILS TBC]	TBC	DN200 [LENGTH - 500mm]	1
P3	PIPEWORK SUPPORT BRACKETS	G-M-S	TBC	TBC

THIS DRAWING IS COPYRIGHT AND IS ISSUED ON CONDITION THAT IT IS NOT COPIED, REPRODUCED OR DISCLOSED TO A THIRD PARTY WITHOUT THE CONSENT IN WRITING OF BALMORAL INDUSTRIAL TANKS LTD



ALL DIMENSIONS IN MILLIMETRES, ALL LEVELS IN METRES, UNLESS STATED OTHERWISE - DO NOT SCALE - IF IN DOUBT, ASK

ALL MEASUREMENTS ARE FOR REFERENCE ONLY
BALMORAL TANKS RESERVE THE RIGHT TO REVISE THEIR PRODUCT DESIGNS AND SUPPORTING INFORMATION AT ANY TIME

TANK SPECIFICATION

TANK TYPE:	Std. Epoxy efusiOn
CONTENTS:	Water
STARTER RING:	False
SEISMIC ACCELERATION:	N/A
MAX. OPERATING TEMP:	N/A
LIVE LOADING (IMPOSED):	0.75kN/m ²
OPERATING PRESSURE:	N/A
OPERATING VACUUM:	N/A
DESIGN STANDARD (HOOP):	EUROCODE
TERRAIN:	RURAL
NUT CAP TYPE:	None
SHELL COLOUR:	BS12B29
SPECIFIC GRAVITY:	1.05
ROOF TYPE:	Trough Deck (Self Supported)
ROOF LOADING (DEAD):	0.25 kN/m ²
WIND SPEED LOADING:	22 m/s
TEST PRESSURE:	N/A
TEST VACUUM:	N/A
DESIGN STANDARD (WIND):	EUROCODE
SEALANT:	Saba Ecosal Bio HM - Black

ANGLE SPECIFICATIONS

TOP ANGLE SPEC:	60x60x6	BOTTOM ANGLE SPEC:	70x70x6
TOP ANGLE MATERIAL:	MS	BOTTOM ANGLE MATERIAL:	MS
TOP ANGLE FINISH:	GALV	BOTTOM ANGLE FINISH:	GALV
TOP ANGLE TYPE:	Joiner Toe Out	BOTTOM ANGLE ANCHOR:	8 x M12 R-XPT - 120 TOTAL

FOUNDATION SPECIFICATION

FOUNDATION TYPE:	Flat Base	REBATE DEPTH:	0mm
JACK TYPE:	MECHANICAL	No JACKS	8

MANWAY 1 SPECIFICATION

SIZE	HINGED	MATERIAL	COATING	COLOUR
800	YES	E-FUSION	BITLPPS.04	12-B-29 (Juniper Green)

NOT APPROVED FOR MANUFACTURE

02	UPDATED PIPEWORK SPECIFICATION	JB	DOC	DOC	08/06/22
01	UPDATED CONNECTION POSITIONS + ADDED PIPEWORK	JB	JO	DOC	24/05/22
00	FIRST ISSUE	JB	JO	BH	19/04/22
REV	DESCRIPTION	BY	CH	AP	DATE

REVISION DETAILS

Balmoral Tanks Ltd. Barrowfield Road, Thurnscoe, Rotherham, South Yorkshire, S63 0EW Telephone: +44 (0)1226 340370 E-Mail: industrialtanks@balmoral.co.uk	BALMORAL TANKS
---	-----------------------

CLIENT	ENVAR COMPOSTING LTD	PROJECT	LONDON
--------	----------------------	---------	--------

DRAWING DETAILS	2-No. Std. Epoxy efusiOn LEACHATE TANK Ø11,698m 15 PLATES ROUND x 5,050m HIGH 5 COURSES HIGH GENERAL ARRANGEMENT: TANK SITE PLAN LAYOUT
-----------------	---

DRAWN BY	JB	CHECKED BY	JO	APPROVED BY	BH	DRAWING No.	E-605817-01-103	REV	02
SCALE	N.T.S.	DATE	19/04/22	SHEET	3 of 6	SIZE	A2	JOB No.	E-605817