



**SAINSBURY'S SUPERMARKETS LIMITED
GOODS ONLINE FACILITY
YORK ROAD, UXBRIDGE**

CAR PARK MANAGEMENT PLAN

NOVEMBER 2022



the journey is the reward

**SAINSBURY'S SUPERMARKETS LIMITED
GOODS ONLINE FACILITY
YORK ROAD, UXBRIDGE**

CAR PARK MANAGEMENT PLAN

NOVEMBER 2022

Project Code:	SSLUxbridge2.1
Prepared by:	JG
Approved by:	ON
Issue Date:	November 2022
Status:	FINAL

Sainsbury's Supermarkets Limited
Goods Online Facility
York Road, Uxbridge
Car Park Management Plan

List of Contents

Sections

1	Introduction	1
2	Background Information	2
3	GOL Facility Operation and Access.....	5
4	Enforcement and Review	7
5	Security.....	8
6	Summary.....	9

Figures

Figure 2.1: Local Site Location	2
Figure 2.2: Regional Site Location.....	3

Appendices

APPENDIX A: Site Layout Plan
APPENDIX B: Swept Path Drawings

1 Introduction

- 1.1 Mayer Brown Limited has prepared this Car Park Management Plan on behalf of Sainsbury's Supermarkets Limited in connection with the new Good Online (GOL) Facility with loading area at the York Road Sainsbury's foodstore in Uxbridge. The application received planning consent from the London Borough of Hillingdon in January 2022, planning application reference 39439/APP/2021/2230, subject to conditions. Condition 9 of the planning consent requires the developer to submit a Car Park Management Plan as follows:

"Prior to occupation of the development, a Car Park Management Strategy shall be submitted to demonstrate how the 22 parking spaces, comprising 11 loading bays and 11 informally laid out spaces, will be managed. The approved strategy shall be implemented as soon as the development hereby permitted is brought into use and the strategy shall remain in place thereafter."

REASON

To ensure the appropriate operation of the car park and prevention of inappropriate/informal parking from taking place by users of the site, in accordance with Policies DMT 1 and DMT 2 of the Hillingdon Local Plan: Part 2 (2020)."

- 1.2 This Car Park Management Plan provides the information required by the above condition and provides an explanation of the operational and design aspects of the GOL facility.
- 1.3 This Car Park Management Plan addresses the following:
- Background information and details of the development,;
 - Details of the operation of the GOL facility;
 - The methods of enforcement and review of the management system;
 - Details of the security measures and standards adhered to within the GOL facility;
 - A summary and conclusion.

2 Background Information

Site Location

- 2.1 The site is located in the centre of Uxbridge, approximately 350m to the northeast of Uxbridge Underground Station and Bus Garage (and thus is within easy walking distance of these major public transport hubs). Figure 2.1 illustrates the location of the site in relation to the local highway network.

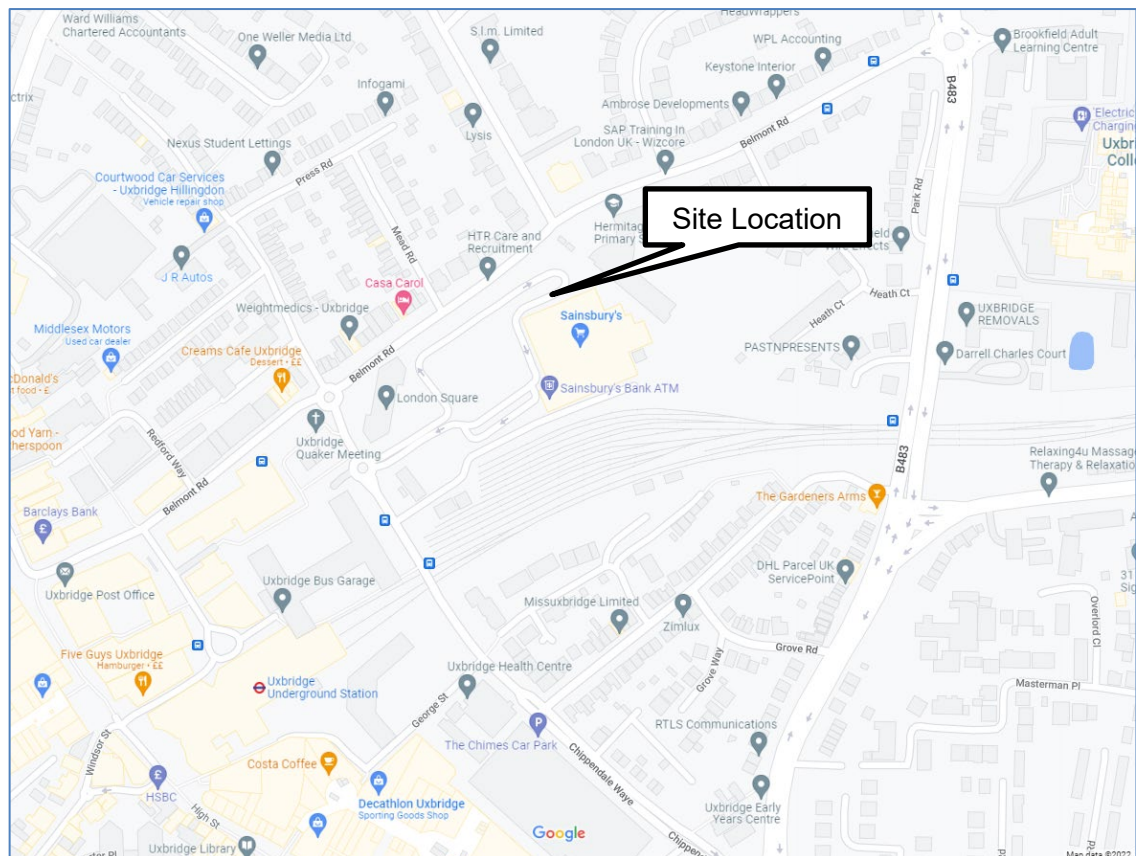


Figure 2.1: Local Site Location

- 2.2 The site is bounded by Belmont Road to the north, the Hermitage Primary School to the east, the Metropolitan and Piccadilly lines of the London Underground to the south and York Road to the west.
- 2.3 The Sainsbury's supermarket is accessed from York Road to the west via a mini-roundabout junction. Pedestrian and cycle access is also taken from York Road, via the car park.

- 2.4 There are footways provided on both sides of York Road and both sides of the access road into the Sainsbury's car park. Crossing points are provided within the car park on the access road and within the car park to provide pedestrian access to the footpath leading to the store entrance which runs along the southern boundary of the car park.
- 2.5 Dropped kerbs and tactile paving are provided at the crossing points on the access road to facilitate pedestrian/cycle movements. Street lighting is present along York Road and within the store car park, providing a safe route to/from the store to the bus stops located on York Road and the pedestrian link providing access from York Road to Uxbridge underground station.
- 2.6 Figure 2.2 illustrates the location of the site in relation to the wider highway network:

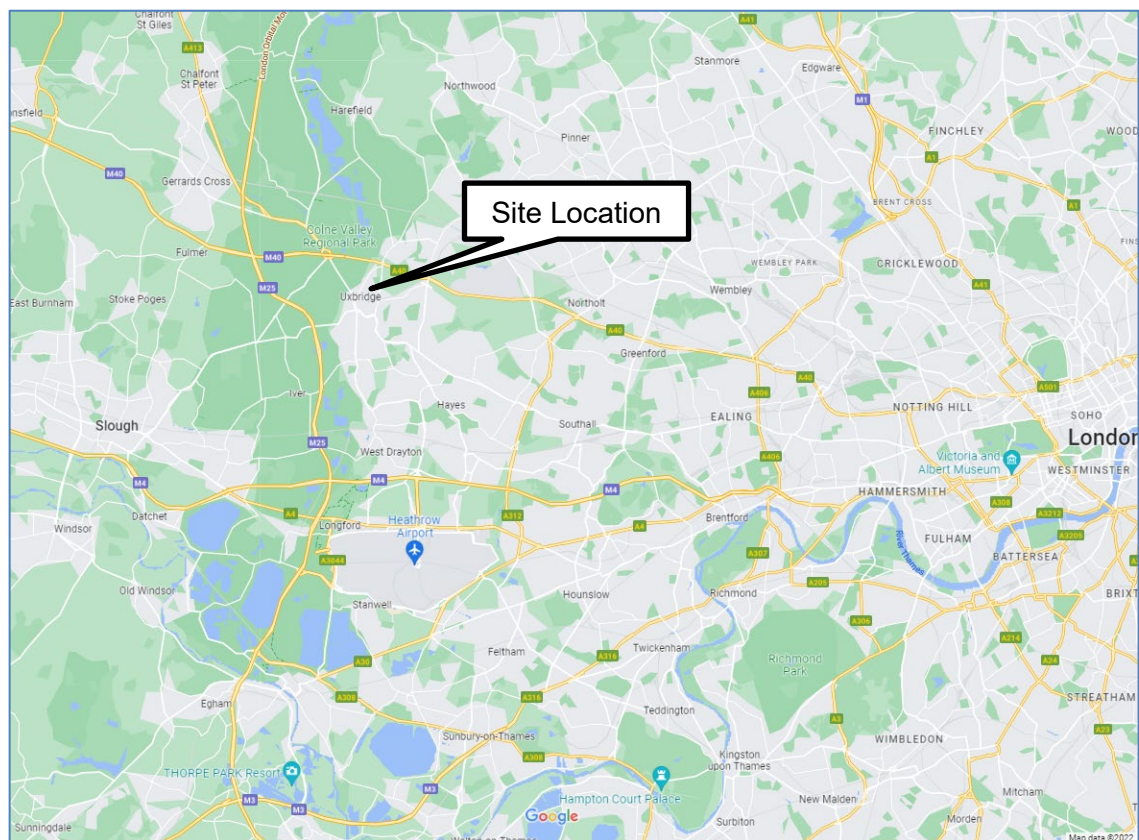


Figure 2.2: Regional Site Location

Development Details

- 2.7 The proposals include the construction of a new GOL facility and loading area, which will be located to the north of the store on the northern corner of the existing car park. The facility will be accessed from main car park via the existing vehicular access to the Sainsbury's car park from York Road.
- 2.8 A plan showing the location and layout of the GOL facility is provided at **Appendix A**.
- 2.9 Sainsbury's Supermarkets Ltd currently use fleets of low emission Mercedes-Benz Sprinter vans to deliver online grocery orders.
- 2.10 Sainsbury's have also been trialling the use of an 100% electric delivery vans in the central London area.

3 GOL Facility Operation and Access

- 3.1 The GOL loading area will be actively managed by Sainsbury's staff and all drivers will be made aware of this CPMP.
- 3.2 The vehicular trips associated with the GOL facility will comprise SSL goods online rigid delivery vehicles. A total of 11 GOL loading bays and parking for a further 11 GOL vehicles are provided within the GOL loading area.
- 3.3 Information has been provided by Sainsbury's regarding the number of trips likely to be undertaken by the GOL facility. It is predicted that, for the York Road store, there will be a total of 627 delivered orders per day based on 22 vans in service. Therefore, equating to 9.5 customer loads per trip, based on vans making three delivery trips per day.
- 3.4 The GOL operating hours are from 06:00 to 23:00, Monday to Saturday and from 07:30 to 22:00 on Sundays. Generally loading takes place between the hours of 07:00 to 08:00 and 15:00 to 16:00, with vehicles delivering to customers between 08:00 to 15:00 and 16:00 to 22:00.
- 3.5 For the first delivery trip of the day, the loading of the GOL vans will be managed with the 11 vans in the loading bays being loaded first and once these have left the site the GOL vans parked in the 11 parking spaces will move into the loading bay spaces to be loaded before leaving the site. On their return to the site for reloading, the parking locations of the vans will be managed by the GOL facility colleagues to avoid congestion.
- 3.6 Swept path plots are provided in **Appendix B** detailing a Sainsburys GOL vehicle serving the loading area. The drawings illustrate that the GOL vehicle can enter, manoeuvre within and exit the loading area safely.
- 3.7 The GOL delivery vehicles contain tracking devices (e.g. ISOTRAK or equivalent) so that their location and targeted arrival times can be scheduled and are known to the GOL management.
- 3.8 The arrivals and departures of the GOL vans are scheduled through the Paragon routing system and the subsequent departures from the GOL facility are then manually managed to ensure a staggered departure from the site.
- 3.9 Cages and trolleys will be stored within the GOL building at all times and only brought out prior to use.

- 3.10 No GOL delivery vehicles will be permitted to park within customer car park during the store opening hours, to ensure that the car parking spaces remain available for use by shoppers at all times.
- 3.11 GOL vehicle drivers will be informed by the store management to:
- manoeuvre their vehicles with as little noise as possible.
 - be aware of the potential conflict with pedestrians.
 - minimise engine revs/noise, and switch off their engines whilst loading or when parked
 - close vehicle doors quietly
 - load/unload goods as quietly as possible

4 Enforcement and Review

Enforcement

- 4.1 The GOL Management will undertake frequent checks, to ensure that the measures set out in this CPMP are being adhered to.
- 4.2 Automatic Number Plate Recognition (ANPR) cameras will be installed at the entrance and exit points to the GOL facility to register the time GOL vehicles arrive and depart.
- 4.3 GOL drivers will be given warning for any of the following contraventions:
- Failure to park properly in a marked GOL loading or parking space;
 - Parking at any time within the main Sainsbury's customer car park;
 - Making excessive noise during the loading process when parking or when entering/leaving their vehicle
- 4.4 Any drivers that do not adhere to the requirements set out in this CPMP will, in the first instance, be reminded of the requirements of the CPMP. Should regular transgressions occur, drivers will receive additional training before undertaking any further deliveries to/from the GOL facility. Any further enforcement will be at the discretion of Sainsbury's Supermarkets Limited or their management company.

Review

- 4.5 The CPMP will become operational upon the opening of the GOL facility and will be subject to an initial review after one month and thereafter on an annual basis.
- 4.6 Should it subsequently become apparent that the management objectives are not being successfully met then an interim review will be undertaken, and any required changes or additional measures implemented as soon as possible.
- 4.7 Reviews of the GOL facility operation will be made in conjunction with the Local Authority as required if deemed necessary to ensure the efficient operation of the facility.

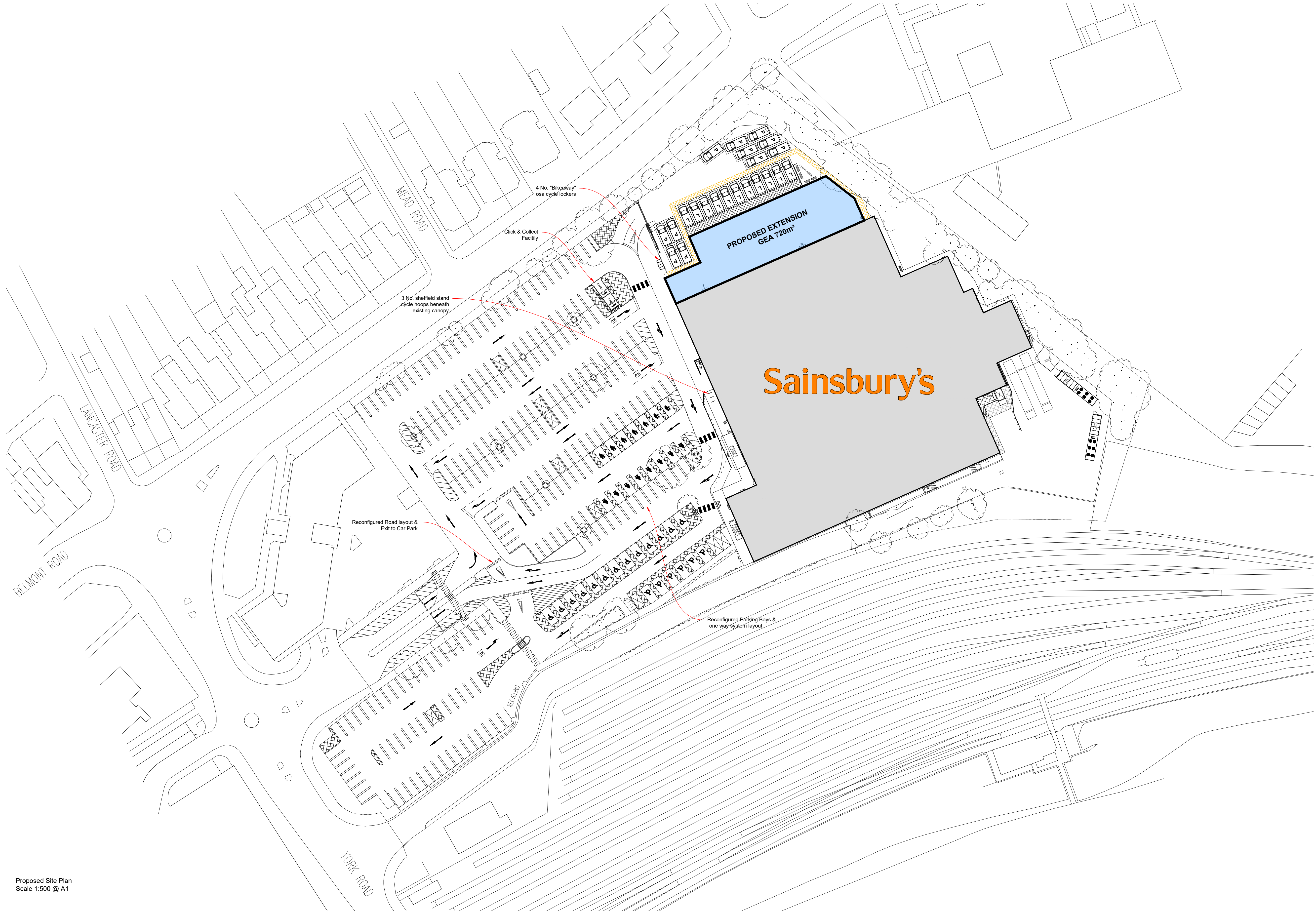
5 Security

- 5.1 The new GOL facility will be made secure and separate from the customer car park. A closed boarded fence will secure the area, with gated access to allow vehicular access to the area.
- 5.2 The entry gates into the GOL facility will be fitted with ANPR automatic powered gates with an intercom linked to the central operations office. This will allow GOL vehicles to enter the site quickly without delay.
- 5.3 The loading area is for GOL vehicles only and therefore no HGV traffic and private customer or staff vehicles will use or be permitted to use this area.
- 5.4 The GOL facility and the wider main Sainsbury's car park and service road will be monitored by GOL colleagues and the car park attendants, with CCTV offering 24-hour security.
- 5.5 There will be a high degree of surveillance covering all areas of the site. CCTV and human presence are the key surveillance methods and are compensating factors where the physical requirements cannot be fully achieved.
- 5.6 Appropriate levels of lighting will be provided to all areas of the GOL facility and will conform to British Standard 5489 Part 9. Where possible, use will be made of natural daylight, which is regarded as 'friendlier' than artificial illumination. Light fixtures and fittings will incorporate vandal resistance features with sources positioned out of reach.

6 Summary

- 6.1 Mayer Brown Limited has prepared this Car Park Management Plan on behalf of Sainsbury's Supermarkets Limited in connection with the new Good Online (GOL) Facility with loading area at the York Road Sainsbury's foodstore in Uxbridge. The application received planning consent from the London Borough of Hillingdon in January 2022, planning application reference 39439/APP/2021/2230, subject to conditions. Condition 9 of the planning consent requires the developer to submit a Car Park Management Plan.
- 6.2 This Car Park Management Plan provides the information required by the above condition and provides an explanation of the operational and design aspects of the GOL facility.
- 6.3 This Car Park Management Plan addresses the following:
- Background information and details of the development
 - Details of the operation of the GOL facility
 - The methods of enforcement and review of the management system
 - Details of the security measures and standards adhered to within the GOL facility

APPENDIX A: Site Layout Plan



Proposed Site Plan
Scale 1:500 @ A1

REV.	DESCRIPTION	DATE	BY	CHKD.
A	Drawn and revised	28.09.2017	JP	
B	Click & Collect facility added as requested by LPA	28.09.2017	AJ	

0m10m20m30m40m50m

500 scale

NORTH

PLANNING

Sainsbury's

Supermarkets Ltd.

York Road, Uxbridge,
UB8 1QW

CHQ 20.15914

1:500 @ A1

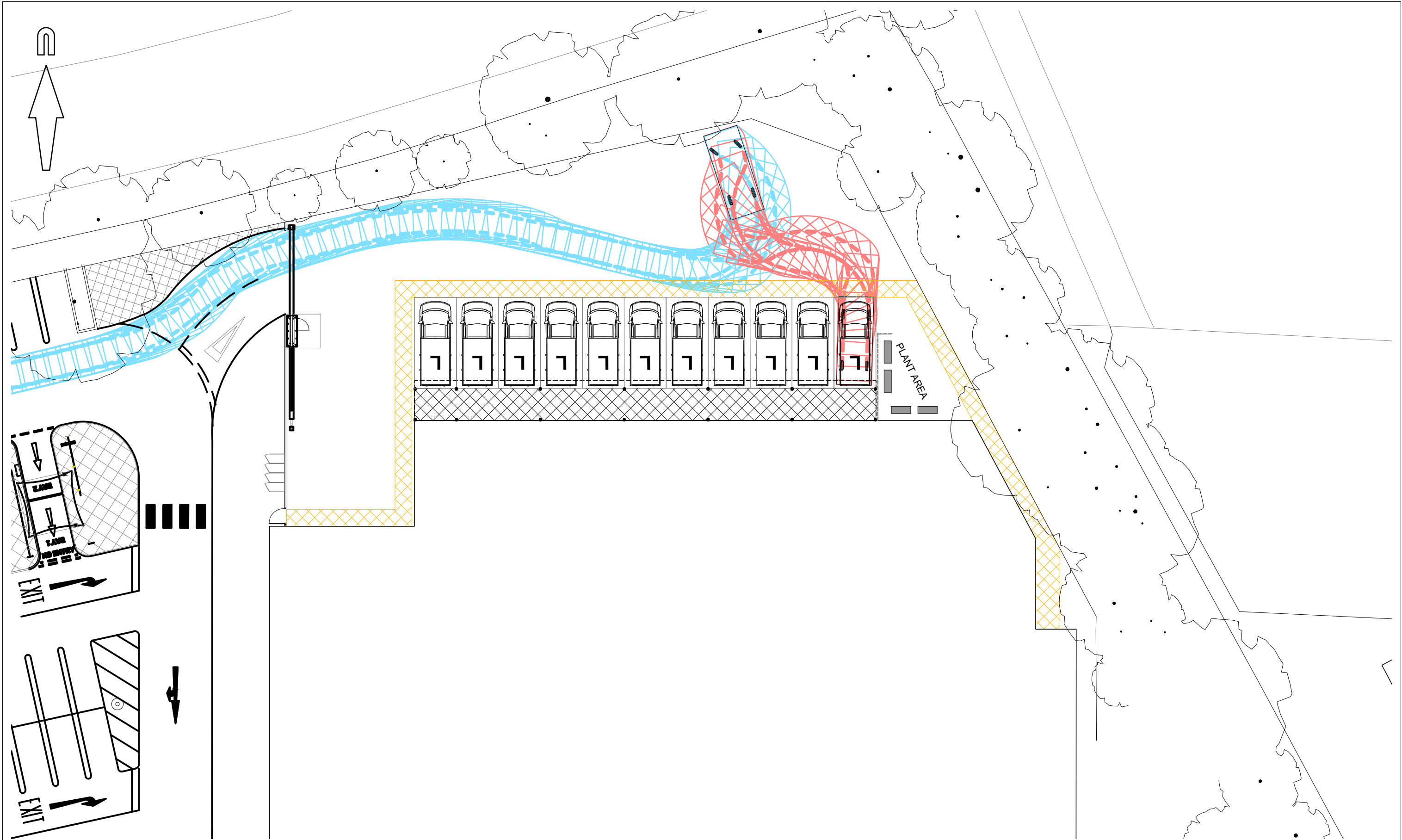
DR

Proposed Site Plan

AS-2133_0117|CHQ|Z07|GF|PL-A-2006|B

ISO A1 Landscape

APPENDIX B: Swept Path Drawings



© Crown copyright, all rights reserved. 2021. Licence number 0100031673.



Mayer Brown Limited
Lion House Oriental Road Woking Surrey GU22 8AR
Telephone 01483 750 508 Fax 01483 750 437
wokingoffice@mayerbrown.co.uk www.mayerbrown.co.uk

client

SAINSBURY'S SUPERMARKETS LTD

project

SAINSBURY'S STORE, UXBRIDGE

title

SSL GOODS ONLINE VEHICLE ENTERING YARD

scale

1:250 @ A3

drawn by

OAN

checked by

NE

date

MAY 2021

cad file

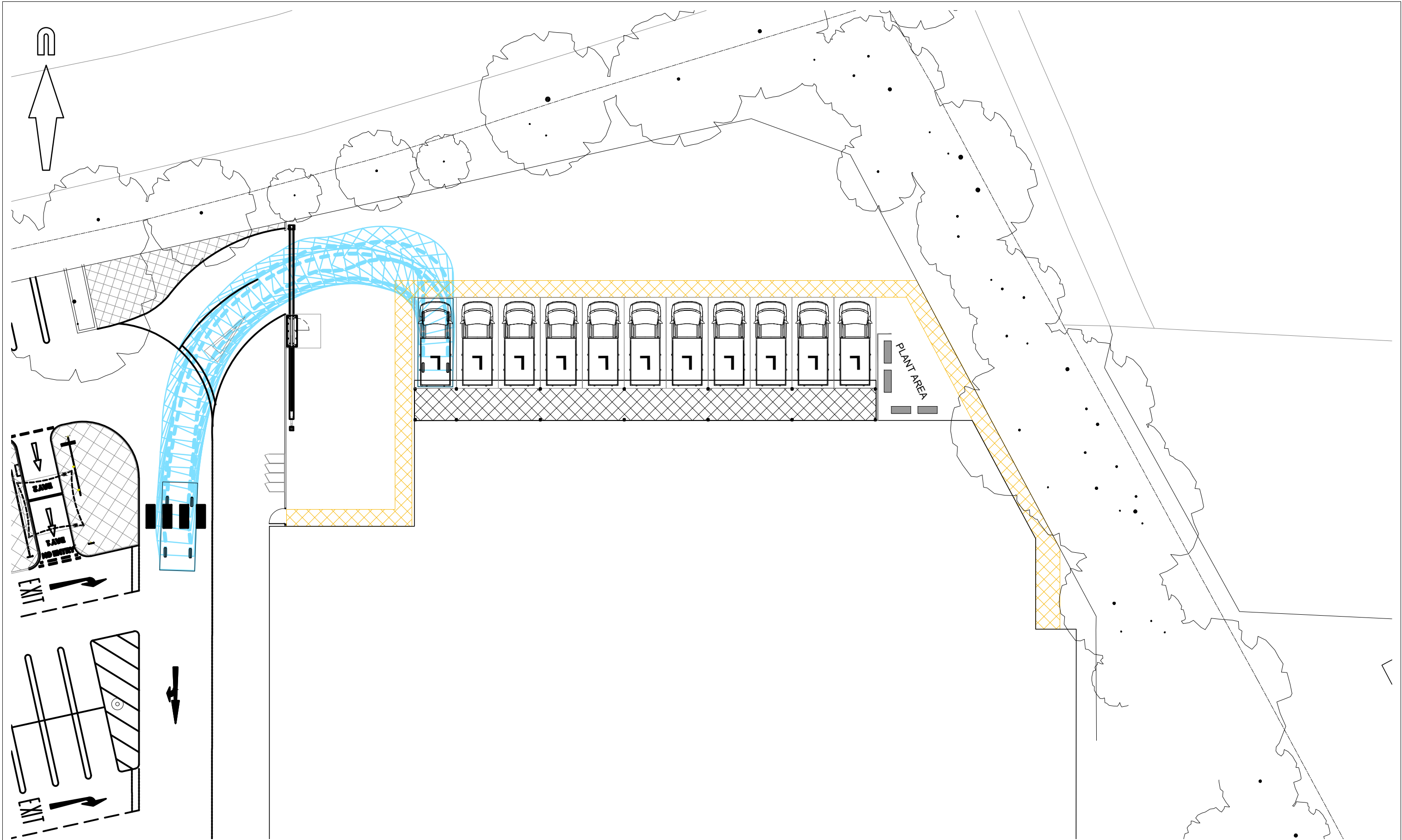
TK05.DWG

suitability

rev.

drawing number

SSLUXBRIDGE.1/TK05



© Crown copyright, all rights reserved. 2021. Licence number 0100031673.



Mayer Brown Limited
Lion House Oriental Road Woking Surrey GU22 8AR
Telephone 01483 750 508 Fax 01483 750 437
workingoffice@mayerbrown.co.uk www.mayerbrown.co.uk

client

SAINSBURY'S SUPERMARKETS LTD

project

SAINSBURY'S STORE, UXBRIDGE

title

SSL GOODS ONLINE VEHICLE EXITING YARD

scale

1:250 @ A3

drawn by

OAN

checked by

NE

date

MAY 2021

cad file

TK06.DWG

suitability

rev.

drawing number

SSLUXBRIDGE.1/TK06

