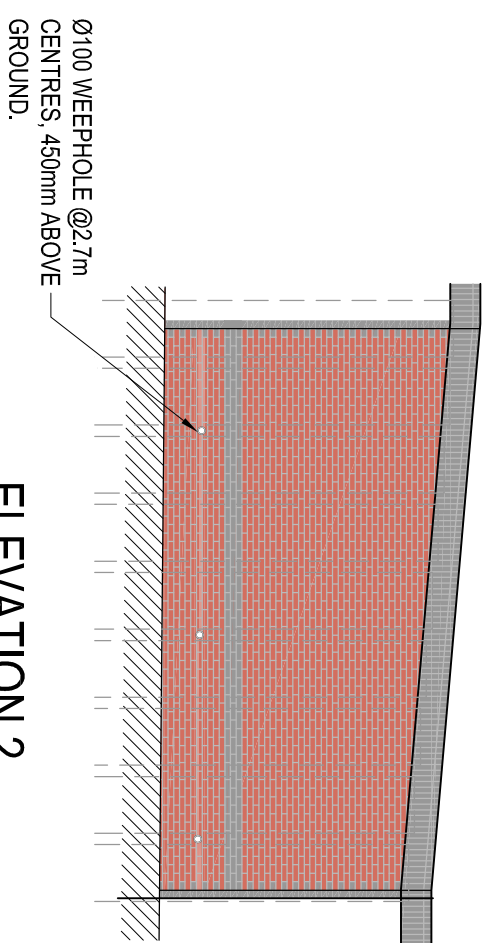


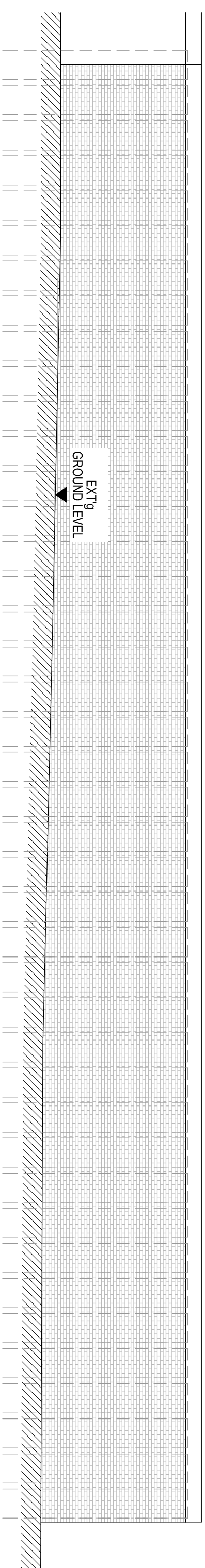
ELEVATION 2

1:100



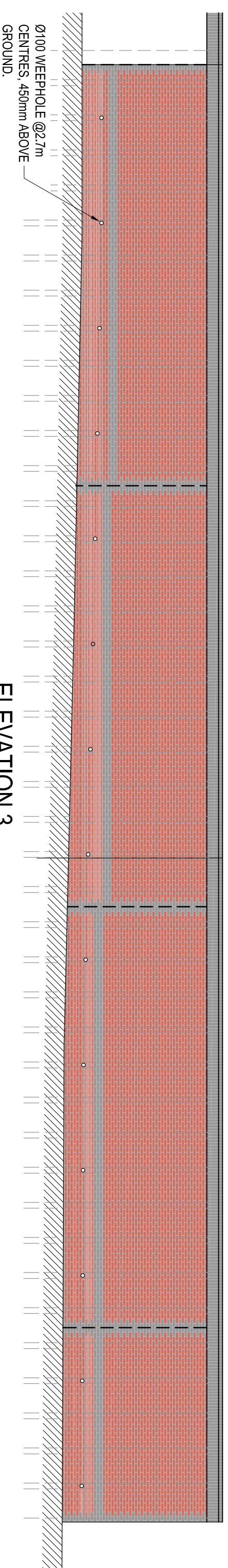
ELEVATION 2

(SHOWN IN FULL DEVELOPMENT) 1 : 100



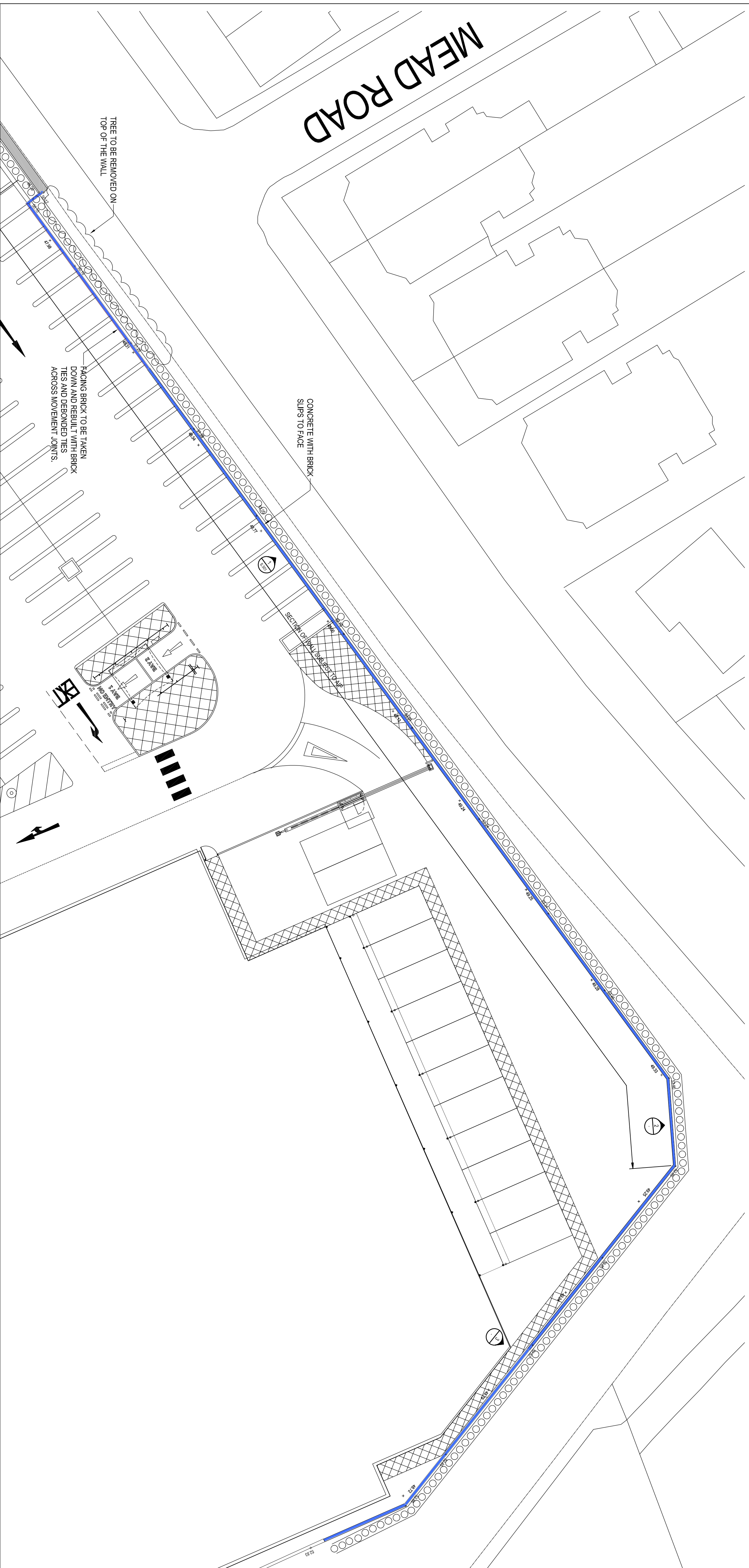
ELEVATION 3

1:100



ELEVATION 3

(SHOWN IN FULL DEVELOPMENT) 1 : 100



Do not scale from this drawing

SAFETY HEALTH AND ENVIRONMENTAL INFORMATION

IN ADDITION TO THE HAZARD/RISKS NORMALLY ASSOCIATED WITH THE TYPES OF WORK DETAILED ON THIS DRAWING, NOTE THE FOLLOWING RISKS AND INFORMATION.

RISKS LISTED HERE ARE NOT EXHAUSTIVE. REFER TO DESIGN ASSESSMENT FORM NO.

FOR INFORMATION RELATING TO USE, CLEANING AND MAINTENANCE SEE THE HEALTH AND SAFETY FILE

IT IS ASSUMED THAT ALL WORKS WILL BE CARRIED OUT BY A COMPETENT CONTRACTOR WORKING, WHERE APPROPRIATE, TO AN APPROVED METHOD STATEMENT.

NOTES

1. ALL DIMENSIONS ARE IN MILLIMETRES UNLESS NOTED OTHERWISE.
2. ALL LEVELS ARE IN METRES RELATIVE TO ORDNANCE DATUM UNLESS NOTED OTHERWISE.
3. THIS DRAWING TO BE READ IN CONJUNCTION WITH ALL OTHER RELEVANT ENGINEERS AND ARCHITECTS' DRAWINGS AND SPECIFICATIONS. FOR ADDITIONAL NOTES REFER TO Dwg No. 1413225-500-004.

CONCRETE

4. CONCRETE TO BE INSTALLED IN LIFTS OF NO GREATER THAN 675mm VERTICALLY.
5. CONCRETE TO BE VIBRATED USING POLE LANCE (OR SIMILAR) FOR BETWEEN 10 AND 15 SECONDS ONLY.
6. MINIMUM 24 HOURS CURING BETWEEN POURS.

PLANNING ISSUE

Client:

Fairhurst

Sainsbury's

Plymouth Science Park
1 Day Road
Plymouth
PL6 8BX

Tel: 01752 87492

Project Title: **SAINSBURY'S UXBRIDGE**

Drawing Title
**RETAINING WALL REMEDIAL WORKS
 PLAN & ELEVATIONS**

Scale of A/E:	Scale:		
AS SHOWN	PLANNING	Approved:	
Drawn:	Checked:		
XS	GH		
Date:	Date:	Date:	
08.04.22	08.04.22		
Drawn By:		Reviewed:	

141322/S.500

P1