

11 Thornhill Road, Ickenham, UB10 8SF

Planning Application reference no : 38718/APP/2022/1609

Condition No. 3

No development shall take place until details of all materials and external surfaces have been submitted to and approved in writing by the Local Planning Authority. Thereafter the development shall be constructed in accordance with the approved details and be retained as such.

Details should include information relating to make, product/type, colour and photographs/images..

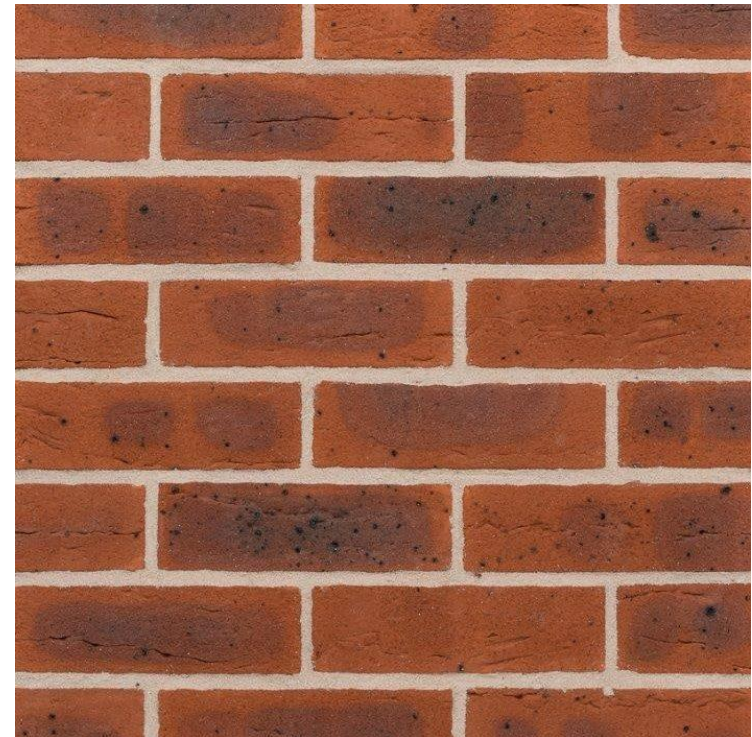
Schedule of Materials

1. Bricks
2. Rendered Plaster
3. Roof Tiles
4. Windows/Door

1. WALL - BRICKS

Company : Traditional Brick & Stone
product : KingsBourne Mix

Name	Kingsbourne Mixture
SKU	BH03003
Manufacturer	Traditional Brick & Stone
Size	H 65mm L 215mm D 102.5mm Facing Brick
Colour	Red
Material	Clay
Texture	Light
Manufacturing Process	Thrown / Stock / Soft Mud
Production Status	In Production
Samples Available	Yes



2. WALL – RENDERED PLASTER

Company : K REND

Rendered Plaster of K-rendering.

Silicone TC is a ready to use organic resin render which is applied to provide a low maintenance textured finish. It is available in different textures and a wide variety of colours. Prior to application the substrate should be primed using Primer TC.

Require:

Silicone TC 05: 1.8kg / sq m approx.

Silicone TC 10: 1.8kg / sq m approx.

Silicone TC 15: 2.5 kg / sq m approx.

Silicone TC 30: 5.0 kg / sq m approx.

Product classification according to
BS EN 15824:2009

Coating Material DIN 18558 – P Org 1

A water-dilutable product for exterior
and interior use.

Water vapour permeability – Category V 2;

Water absorption – Category W 3;

Adhesion - 0.65 MPa;

Thermal Conductivity:

$$\lambda_{10, \text{ dry (P=50\%)}} = 0.83,$$

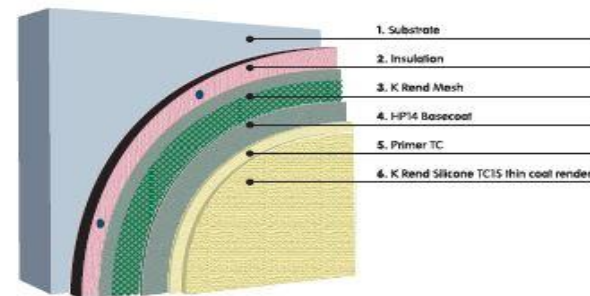
$$10, \text{ dry (P=90\%)}} = 0.93;$$

Reaction to fire - Class B-s2,d0

Product Classification (DIN 18558)

Coating Material DIN 18558 – P Org 1

The Thin Coat range is particularly suitable where lightweight render systems are required, such as an external wall insulation system (illustrated below).



Pearl



3. ROOF TILES

Company : TRAVIS PERKINS

Product : Passaro 100 1ST 500 x 250 x 5mm Spanish Slate

Technical specification

Length 500 mm

Thickness 5 mm

Width 250 mm

Material Slate

Colour CHARCOAL-Grey

Usage Roofing

Years Guaranteed 75

Certifications Met EN12326-1

Type Roofing Slate

Brand Name Travis Perkins



4. DOOR & WINDOWS

Velfac Windows– Composite Aluminium Frame

Aluminium Windows – Colour RAL 7021

Velfac 200 Energy (Double glazed in accordance with Acoustic Report)

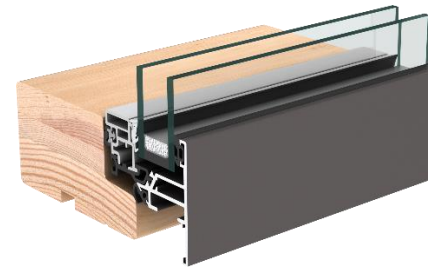
Halifax House, Cressex Business Park, High Wycombe, Buckinghamshire. HP12 3SE

Velfac Doors – Composite Aluminium Frame

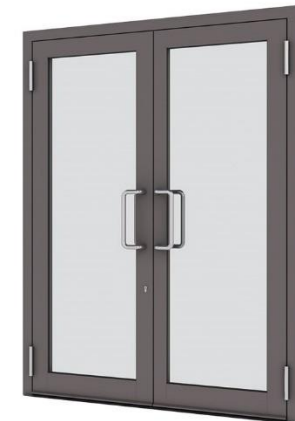
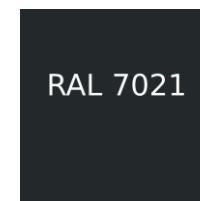
Aluminium Door– Colour RAL 7021

Velfac 500 Energy (triple glazed in accordance with Acoustic Report)

Halifax House, Cressex Business Park, High Wycombe, Buckinghamshire. HP12 3SE

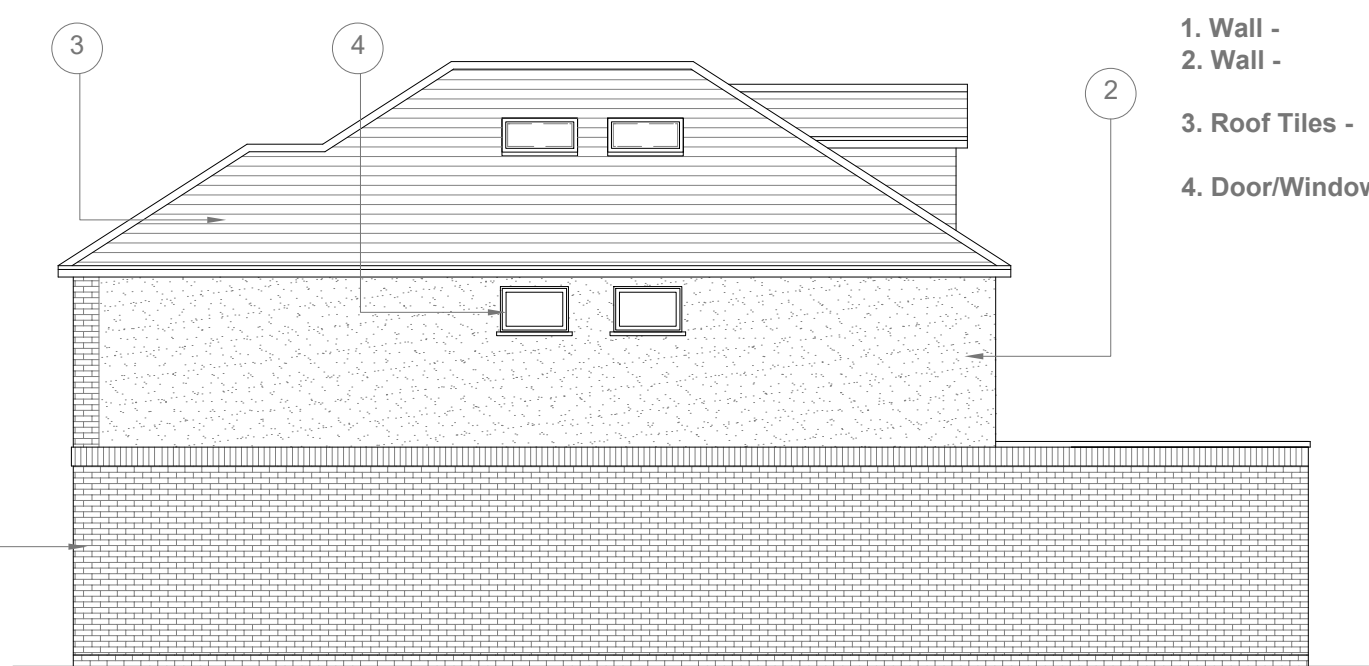


01 ely12





Proposed Front Elevation
Scale 1:100



Proposed Side Elevation
Scale 1:100

1. Wall -

2. Wall -

3. Roof Tiles -

4. Door/Windows

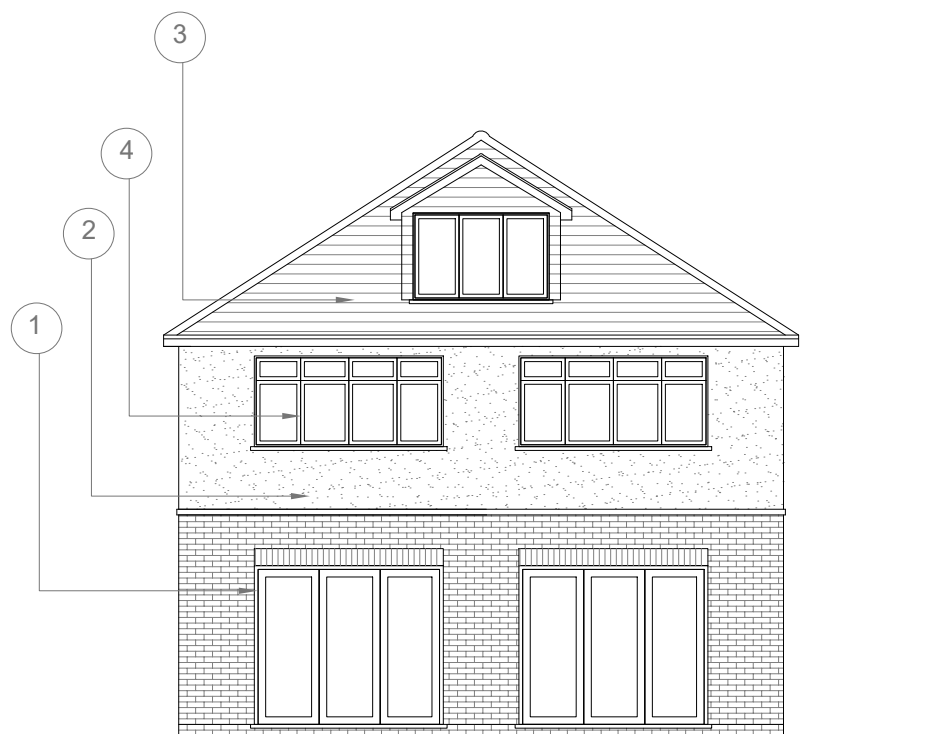
BRICK - 65mm Kinsboune Mix

Rendered Plaster - Colour - Perl White - K Rend

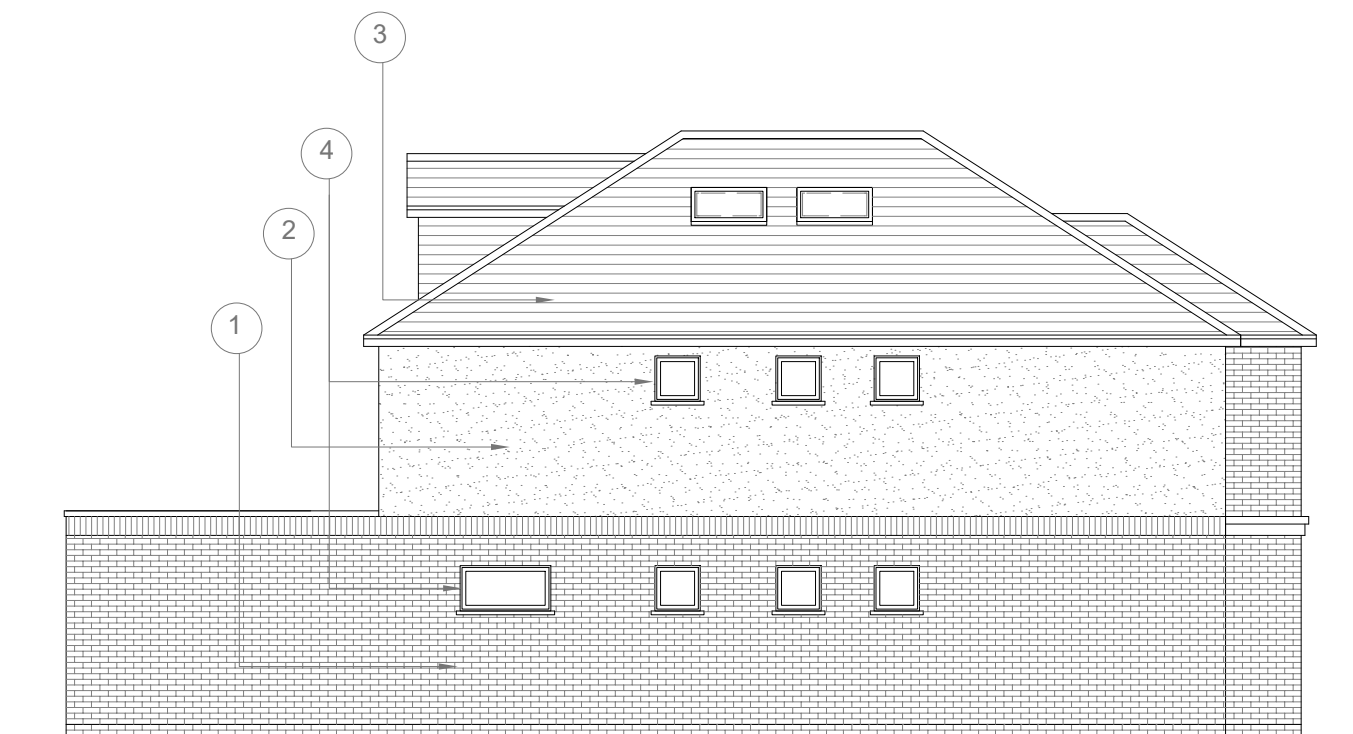
Passaro 100 1ST 500 x 250 x 5mm

Spanish Slate Colour - Chrcole Grey

Powder Coated Aluminium Double glazed Windows. Colour - Anthresite Grey



Proposed Rear Elevation
Scale 1:100



Proposed Side Elevation
Scale 1:100

Proposed External Finish Materials to Match Existing External Finish Materials

Proposed Flank Wall Window to be Obscure Glazed and Non Opening below 1.7m from FFL

Velux Window to be installed as per manufacturer specification, not projected more than 150mm from the plane of roof slop



GENERAL NOTES:
1. ALL DIMENSIONS ARE IN MILLIMETER.
2. VERIFY ALL DIMENSIONS AND CONDITIONS BEFORE BUILDING OR STARTING CONSTRUCTION. NOTIFY THE DESIGNER IMMEDIATELY OF ANY DISCREPANCY OR VARIATION.
3. ALL WORK TO COMPLY WITH CURRENT BUILDING REGULATIONS AND CODES OF PRACTICE

Title:

Proposed Elevations

Site Address	Scale: 1:100 @A3	Revision Date:	
11 Thornhill Road	Date: 15/10/2021	A	26-07-2022
Ickenham	Drawing No.:		
Middlesex	2021/149 -07A		
UB10 8SF	Drawn By:	e:mail - faluckpatel@yahoo.com (M) +44 (0) 7871 466 254	
	FP		

Faluck Patel