

DATA SHEET

SKY GARDEN EXTENSIVE SUBSTRATE SBS01

Version 1.0

SKY GARDEN EXTENSIVE SUBSTRATE

A free draining, low nutrient and moisture retentive growing medium made from 100% recycled material in line with the UK Green Roof Code of best practice. Testing conforms within the BS8616:2019 green roof substrate testing methods and was completed by STRI.



SYSTEM CONSIDERATIONS

- A free draining substrate suitable for use on Extensive Roof Systems and all plant finishes.
- Minimum recommended depth: 60 mm
- Free draining when saturated
- Allows root penetration
- Recycled content
- Organic material PAS100 certified.

PHYSICAL PROPERTIES

Bulk Density When Oven Dried	0.834 g cm ⁻³ (834 kg/m ³)
Bulk Density at Field Capacity	1.115 g cm ⁻³ (1115 kg/m ³)
Field Capacity (% v/v)	25.6 % v/v
Total Porosity (%)	41.40%
Porosity at Field Capacity (%)	15.60%

TECHNICAL PROPERTIES

Organic matter (% weight)	4.5%
pH	7.0
Electrical Conductivity (mS cm ⁻¹)	2.21 mS cm ⁻¹
Phosphate (mg l ⁻¹)	293 mg l ⁻¹
Potassium (mg l ⁻¹)	1072 mg l ⁻¹
Total nitrogen (%)	0.86%

SPECIFICATION DESCRIPTION

All testing of Sky Garden Ltd Substrate was completed by Sports Turf Research Institute under the BS8616:2019 Specification for Performance Parameters and Test Methods for Green Roof Substrates. A specially blended mix of free draining organic material with clean and screened aggregates, recycled from certifiable waste products from the building industry to provide a low nutrient water retentive growing medium.



T 01242 620905
E enquiries@sky-garden.co.uk

Head Office

Unit 3, Miller Court
Tewkesbury, Gloucestershire,
GL20 8DN

01242 620905

London Office

Kemp House,
152 City Road,
London. EC1V 2NX

02035 030927



DATA SHEET

SKY GARDEN SEDUM BLANKET SGSB01

Version 1.0

SKY GARDEN SEDUM BLANKET

High quality Sedum Blanket grown in the UK, to provide the perfect low maintenance solution for extensive green roof systems using a carefully selected mix of sedum species. Sedum are the most commonly used plant species in green roofing due to their ability to grow in harsh weather environments.

Pre-cultivated UK grown vegetation blanket, containing 8-12 species specifically chosen for extensive green roof applications. Grown on 20 mm substrate base on a carrier.



SYSTEM CONSIDERATIONS

- Instant vegetative cover for extensive sedum blanket systems.
- Recommended minimum substrate depth 60mm.
- Low maintenance, shallow rooted, non-invasive vegetation cover.
- Sky Garden recommends annual maintenance of sedum roofs to remove unwanted invasive species and to ensure long term system functionality and sustainability.

PHYSICAL PROPERTIES

Composition	Base - Geotextile fabric / coir blanket.
	Growing Medium - 20 mm Sedum Mix.
	Vegetation - Mature Sedum plants grown from rhizome and seed.
Plant Height	20-50 mm, depending on growing stage of sedum.
Weight (dry)	10 kg/m ²
Weight (saturated)	30 kg/m ²
Consignment Size	40 m ² per Pallet (approx.)
Colour	Seasonal variation
Sizes	2m x 1m
Species	<ul style="list-style-type: none"> • Sedum Acre • Sedum Album • Sedum Ellacombianum • Sedum Floriferum • Sedum Hybridum • Sedum Middendorffianum • Sedum Montanum • Sedum Pulchellum • Sedum Reflexum • Sedum Selskianum • Sedum Sexangulare • Sedum Spurium



T 01242 620905
E enquiries@sky-garden.co.uk

Head Office

Unit 3, Miller Court
 Tewkesbury, Gloucestershire,
 GL20 8DN

01242 620905

London Office

Kemp House,
 152 City Road,
 London. EC1V 2NX

02035 030927



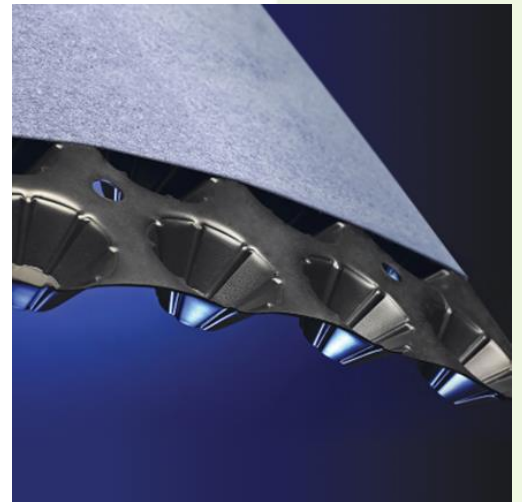
DATA SHEET

SKY GARDEN 20MM DRAINAGE BOARD WITH FILTER FLEECE DDRD20-1

Version 1.0

SKY GARDEN 20MM DRAINAGE BOARD WITH FILTER FLEECE

Rigid drainage board manufactured from HDPE. Combined function as a water-retention, drainage and filtration layer. Rigid sheet with integrated Polypropylene filter layer. Studded HDPE sheets contains perforations to drain surplus water and high capacity dimples (height c.20mm) for water retention. High compressive strength (115kPa). Delivery and installation according to Sky Garden instruction. Product arrives in 48.5 m2 size rolls.



TECHNICAL DATA

	Test	Unit	Mean Values		
Mechanical Properties - Geocomposite					
Compressive Strength	EN ISO 25619-2	kPa	115		
Tensile Strength (MD/CMD)	EN ISO 10319	kN/m	17		
Static Puncture	EN ISO 12236	kN	2.6		
Hydraulic Properties - Geotextile					
Water Permeability vH50	EN ISO 11058	l/(m2·s)	100		
Apparent Opening Size	EN ISO 12956	µm	80		
Hydraulic Properties - Geocomposite					
Water Flow Capacity In The Plane (Rigid/Rigid)	EN ISO 12958	l/(m2·s)	(i=1)	(i=0.5)	(i=0.1)
at 20kPa			10.0	8.0	5.0
at 100kPa			9.0	6.0	3.5
at 200kPa			5.0	2.0	1.0
Water Storage Capacity		l/m2	4.0		
Water flow Through Perforations	EN ISO 11058	l/(m2·s)			
Physical Properties					
Thickness at 2kPa	EN ISO 9836-1	mm	21		
Standard Colour			Black		
Perforations per m2			49		
Perforations diameter		mm	10		
Polymer - Cuspate			HDPE		
Polymer - Textile			PP		
Dimensions					
Standard Roll Length		m	50		
Standard Roll Width		m	0.97		
Approximate Roll Weight		kg	60		



T 01242 620905
E enquiries@sky-garden.co.uk

Head Office

Unit 3, Miller Court
Tewkesbury, Gloucestershire,
GL20 8DN

01242 620905

London Office

Kemp House,
152 City Road,
London. EC1V 2NX

02035 030927



DATA SHEET

SKY GARDEN PROTECTION FLEECE PF01

Version 1.0

SKY GARDEN PROTECTION FLEECE

Sky Garden protection fleece is a thick needle punched non-woven geotextile manufactured from 100% virgin polypropylene high tenancy fibres containing 1% active carbon black. Manufactured from a unique blend of high tenancy fibres providing class leading durability. Optimised for maximum strength, performance and UV stability.

- For use on all green roof and podium systems.
- 100% virgin polypropylene.
- 3.5mm thick.
- Supplied in 50m x 1m rolls weighing 14kg.
- BS EN ISO9001



TECHNICAL PROPERTIES

Mechanical Properties	Test Standard	Units	Product Value
Static Puncture (CBR)	EN ISO 12236	kN	2.5
Push through displacement	EN ISO 12236	mm	65
Tensile Strength (MD/CMD)	EN ISO 10319	kN/m	15
Tensile Elongation (MD/CMD)	EN ISO 10319	%	80
Cone Drop	EN ISO 13433	mm	10

Filter Properties	Test Standard	Units	Product Value
Apparent opening size	EN ISO 12956	µm	150
Water Permeability	EN ISO 11058	(l/m ² ·s)	100
Coefficient of permeability	EN ISO 11058	(m/s 10 ⁻³)	7

Durability	Test Standard	Product Value
Weathering 50 MJ/m ² (1 month)	EN ISO 12224	>90% Retained Strength
Microbiological Resistance	EN ISO 12225	No Loss in Strength
Resistance to Acids & Alkalis	EN ISO 14030	No Loss in Strength
Oxidation at 112 days (110 years)	EN ISO 13438	>90% Retained Strength



T 01242 620905
E enquiries@sky-garden.co.uk

Head Office

Unit 3, Miller Court
 Tewkesbury, Gloucestershire,
 GL20 8DN

01242 620905

London Office

Kemp House,
 152 City Road,
 London. EC1V 2NX

02035 030927



DATA SHEET

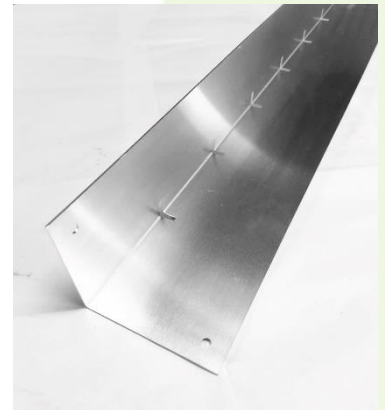
SKY GARDEN ALUMINIUM SEPARATION DETAIL RE100S

Version 1.0

SKY GARDEN ALUMINIUM SEPARATION DETAIL

A light weight separation detail to be installed as an interface between living roof build ups and vegetation free stone channels. Water drainage slots at the base of the profile allow for excess water to move from the living roof to the drainage channels while retaining the fine particles within the growing medium.

Lengths are connected with an aluminium connecting plate and rivet gun for secure fixing. Installing the profile as an interface removes the need to adhere to the roof deck as the base is ballasted by the system build up



TECHNICAL PROPERTIES

Material	A mid sheen 1.5 mm thickness aluminium up-stand and connecting plate, perforated for drainage.
Thickness	1.5mm
Finish	Mid Sheen Natural (Unpainted)
Height	100mm (Available in Other Sizes)
Length	2400mm
Base	80mm
Lengths Per Pallet	Max 210



T 01242 620905
E enquiries@sky-garden.co.uk

Head Office

Unit 3, Miller Court
Tewkesbury, Gloucestershire,
GL20 8DN

01242 620905

London Office

Kemp House,
152 City Road,
London. EC1V 2NX

02035 030927



DATA SHEET

SKY GARDEN RIVERSTONE RS01

Version 1.0

SKY GARDEN RIVERSTONE

Natural rounded stones for use as system ballast and perimeter borders to all living roof and bio-diverse roof installations, providing areas of free drainage, whilst acting as an effective barrier, helping to restrict the spread of plant material to drainage and gutter outlets.

- Provides free flowing drainage
- Contemporary, natural and aesthetic,
- Stone borders should be installed to 75mm in depth to a minimum width 500mm around all openings, penetrations and vertical abutments.



TECHNICAL PROPERTIES

Composition	Mixed Rounded Naturally occurring Stones
Depth	c.75mm (Typical Ballast Margin)
Colour	Mixed (Normally Grey/Brown)
Shape	Rounded
Unit Width	20-40mm
Consignment Size	22kg Bags/Bulk Bags 1 tonne
Treatment	Washed



T 01242 620905
E enquiries@sky-garden.co.uk

Head Office

Unit 3, Miller Court
Tewkesbury, Gloucestershire,
GL20 8DN

01242 620905

London Office

Kemp House,
152 City Road,
London. EC1V 2NX

02035 030927



Sky Garden Sedum Blanket

SGSB01

Technical Data

Sky Garden Sedum Blanket

Pre-cultivated UK grown vegetation blanket, containing 12 species specifically chosen for extensive green roof applications. Grown on 25 mm substrate base on a carrier membrane.

Physical Properties

Composition	Base - Geotextile fabric / coir blanket.
	Growing Medium – 25 mm Sedum Mix.
	Vegetation - Mature Sedum plants grown from rhizome and seed.
Plant Height	20-50 mm, depending on growing stage of sedum.
Weight (dry)	20 kg/m2
Weight (saturated)	25 kg/m2
Consignment Size	40 m2 per Pallet
Colour	Seasonal variation
Sizes	1m x 2m

Species Sown

12 Sedum species Sown:
Sedum acre, *Sedum album*, *Sedum ellacombianum*, *Sedum floriferum*, *Sedum hybridum*, *Sedum middendorffianum*, *Sedum montanum*, *Sedum Pulchellum*, *Sedum reflexum*, *Sedum selskianum*, *Sedum sexangulare*, *Sedum spurium*



System Considerations

- Instant vegetative cover for Extensive Sedum Blanket Systems.
- Recommended minimum substrate depth 50 mm
- Most commonly used product due to sedum success in growth on Green Roof systems
- Low maintenance, shallow rooted and non-invasive vegetative cover.
- Sky Garden recommends annual maintenance of sedum green roofs to remove invasive/unwanted species to ensure system functionality and sustainability

Specification Description

High quality Sedum Blanket grown in the UK, to provide the perfect low maintenance solution for extensive green roof systems using a carefully selected mix of sedum species. Sedum are the most commonly used plant species in green roofing due to their ability to grow in harsh weather environments.



01242 620905

Sky Garden
7 & 8 Keil Close
High Street
Broadway
WR12 7DP



Sky-garden.co.uk

Sky Garden Wildflower Blanket

SGWB01

Technical Data

Sky Garden Wildflower Blanket

A pre-cultivated UK grown vegetation blanket, containing 38 species specifically chosen to encourage biodiversity on Extensive, Intensive and Podium roof applications. Grown on 25 mm substrate base on a carrier membrane.

Physical Properties

Composition	Base - Geotextile fabric
	Growing Medium – 25 mm Biodiversity Mix
	Vegetation - Plants grown from native provenance seed.
Total Height	150 mm plant height, pre delivered and mown. Fully established height up to c. 1000 mm
Weight (dry)	20 kg/m2
Weight (wet)	25 kg/m2
Consignment Size	40 m2 per Pallet (typical)
Colour	Seasonal Variation
Sizes	2m x 1m

Species Sown

38 Species sown, see overleaf for full list of wildflower and grass species (Subject to seasonal variance).



System Considerations

- Instant vegetation cover for Wildflower Systems.
- Minimum recommended substrate depth: 100 mm
- Sky Garden recommends annual maintenance of wildflower green roofs, including two visits per year.
- Spring remedial and Autumn cutting, when the vegetation will be trimmed after flowers seeded.

Specification Description

Sky Garden’s UK provenance Biodiverse Wildflower Blanket contains 38 native species (33 wildflower and 5 grasses) as a pre-grown vegetation cover for use on Extensive and Intensive green roofs, podiums and landscaping projects. Species have been carefully chosen to provide a long flowering season from Spring through to late Autumn. It has a varied range of colour and habitat which is attractive to pollinators and in aesthetic appearance. Sky Garden’s Biodiverse Wildflower Blanket can be used to meet local and national Biodiversity Action Plans and BREEAM energy credits.



01242 620905

Sky Garden
7 & 8 Keil Close
High Street
Broadway
WR12 7DP



Sky-garden.co.uk

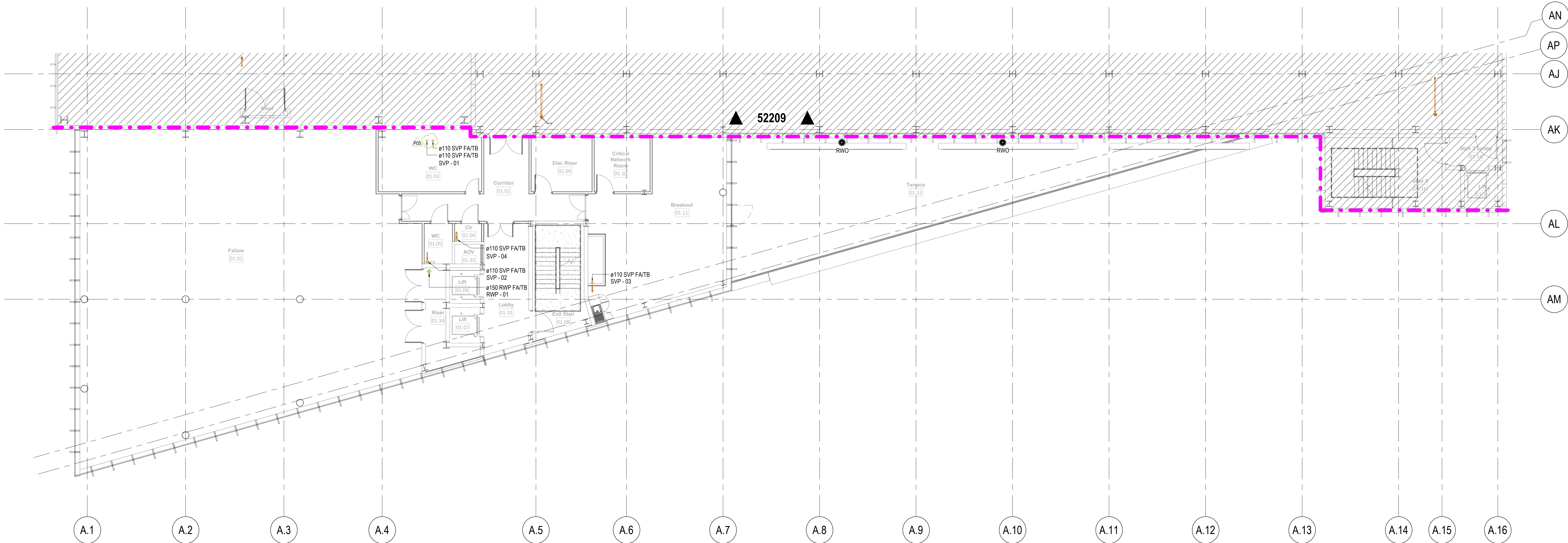
Wildflower

- *Achillea millefolium* (Yarrow)
- *Agrimonia eupatoria* (Agrimony)
- *Anthyllis vulneraria* (Kidney Vetch)
- *Betonica officinalis* (Betony)
- *Campanula glomerata* (Clustered Bellflower)
- *Campanula rotundifolia* (Harebell)
- *Centaurea nigra* (Lesser Knapweed)
- *Echium vulgare* (Viper's Bugloss)
- *Galium verum* (Lady's Bedstraw)
- *Glebionis segetum* (Cornflower Corn Marigold)
- *Hypericum perforatum* (Perforate St John's Wort)
- *Hypochaeris radicata* (Catsear)
- *Knautia arvensis* (Field Scabious)
- *Leontodon hispidus* (Rough Hawkbit)
- *Leucanthemum vulgare* (Oxeye Daisy)
- *Linaria vulgaris* (Common Toadflax)
- *Lotus corniculatus* (Birdsfoot Trefoil)
- *Medicago lupulina* (Black Medic)
- *Papaver rhoeas* (Common Poppy)
- *Plantago media* (Hoary Plantain)
- *Primula veris* (Cowslip)
- *Prunella vulgaris* (Selfheal)
- *Ranunculus acris* (Meadow Buttercup)
- *Rhinanthus minor* (Yellow Rattle)
- *Rumex acetosa* (Common Sorrel)
- *Sanguisorba minor* ssp. *Minor* (Salad Burnet)
- *Scabiosa columbaria* (Small Scabious)
- *Silene dioica* (Red Campion)
- *Silene vulgaris* (Bladder Campion)
- *Thymus* (Thyme)
- *Trifolium pratense* (Red Clover)

Grasses

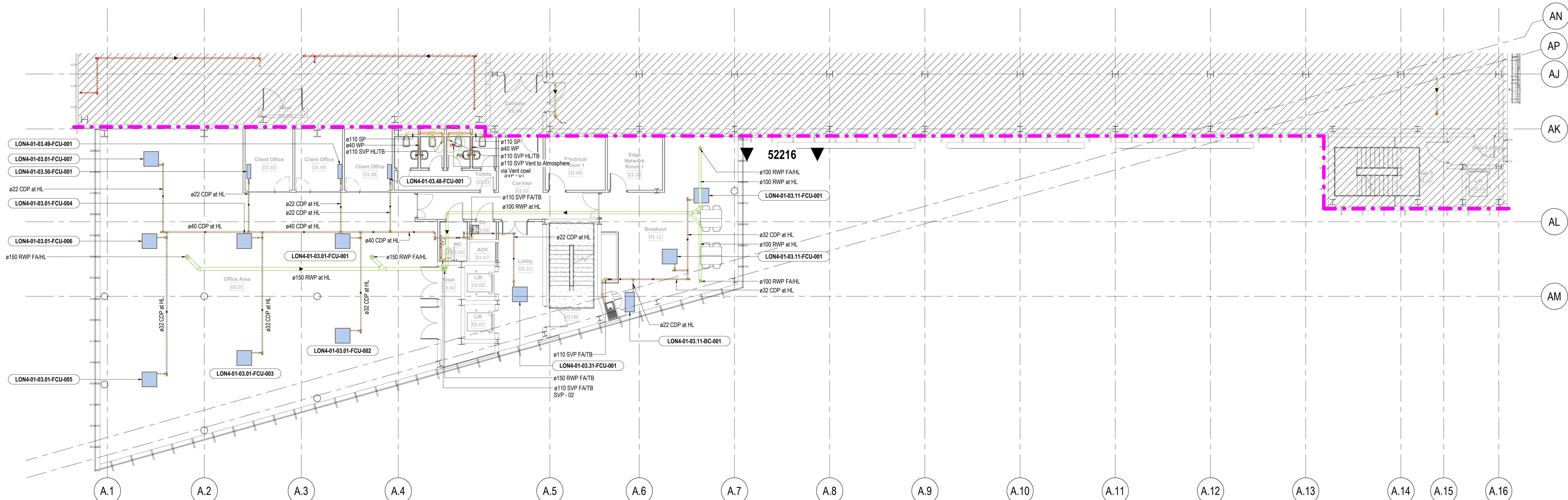
- *Agrostis capillaris* (Brown Top Bent)
- *Anthoxanthum odoratum* (Sweet Vernal Grass)
- *Briza media* (Quaking Grass)
- *Cynosurus cristatus* (Crested Dogstail)
- *Festuca rubra* (Red Fescue)

1.4 Drainage plans



A | Drainage Layout - Office - Level 01 & 02

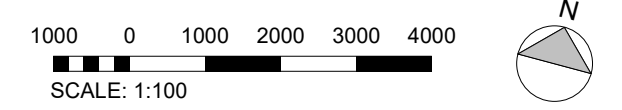
SCALE: 1: 100



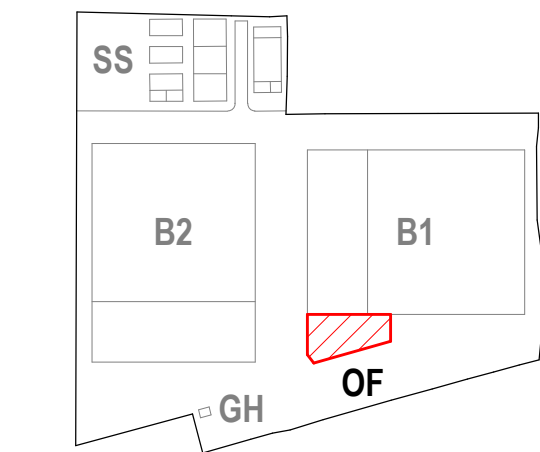
B | Drainage Layout - Office - Level 03

SCALE: 1: 100

- General Notes
1. Do not scale from this drawing. All dimensions indicated are in millimetres unless otherwise stated. Verify all measurements on site.
 2. Any discrepancies between the drawings and other documents should be brought to the attention of the engineer immediately.
 3. The drawing is not an installation drawing. It is the Contractor's responsibility to make full coordination with all other drawings.
 4. The contents of this drawing shall be read in conjunction with the current revisions of Architectural, Civil, Structural, Mechanical, Electrical, Security, Systems drawings and all relevant sections of the specifications.



Key Plan



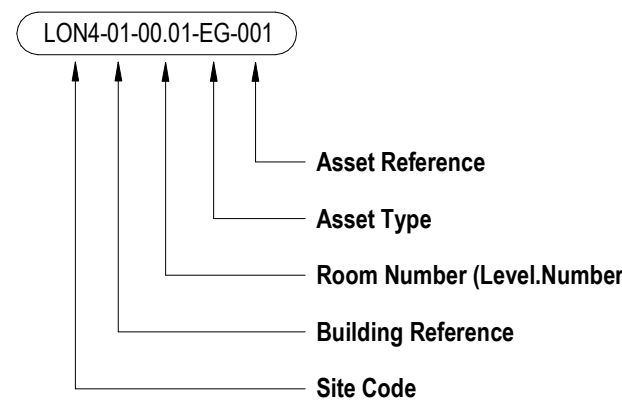
Legend:

- Soil Pipe
- Waste Pipe
- Condensate
- Rainwater
- Vent Pipe
- Trace Heated Pipework
- Pipework Below Ground
- Pipework Above Ground

Abbreviation:

- AAV Air Admittance Valve
- AP Access Panel
- FC Fire Collar
- VTR Vent thru Roof
- SD Shower Drain
- SP Soil Pipe
- SVP Soil Vent Pipe
- URI Urinal
- WC Water Closet
- WHB Wash Hand Basin
- WP Waste Pipe
- WVP Waste Vent Pipe
- RWO Rainwater Outlet
- FCU Fan Coil Unit
- VTR Vent Thru Roof
- CDP Condensate Drain
- TB To below
- FG-1 Floor gully with dry seal trap and tunnel top
- FG-2 Floor gully with dry seal trap
- FG-3 Closed Top Floor gully For Future use
- FCD Floor Clean Out
- WM Water Meter

Mechanical Asset Nomenclature



Notes

1. Refer to Client "Asset Naming Convention" document for full details of "Asset Type" abbreviations.

POS: STAGE 4A - NOVEMBER 20 UPDATE	JM/PAL/00	04/11/22
POS: STAGE 4A - JULY 20 UPDATE	JM/PAL/00	18/07/22
POS: STAGE 4A ISSUE	JM/PAL/00	20/03/22
POS: STAGE 4A ISSUE	JM/PAL/00	22/03/22
POS: STAGE 3 - 90% ISSUE	JM/PAL/00	17/12/21
POS: STAGE 3 - 90% ISSUE	JM/PAL/00	15/11/21
Other: Issues		

Client

colt
Data Centre Services

Lead Consultant MEP Designer

Architect

NWA

Structural / Civil Engineer

ARUP

File Consultant

salus

Security Designer

Control Risks

Project Title

London 4

Drawing Title

Drainage Layout
Office
Level 01, 02 & 03
(Typical Fallow Floor)

Project Status

STAGE 4A ISSUE

Discipline

PLUMBING

Project Number

P201114

Scale

B A0

Revision

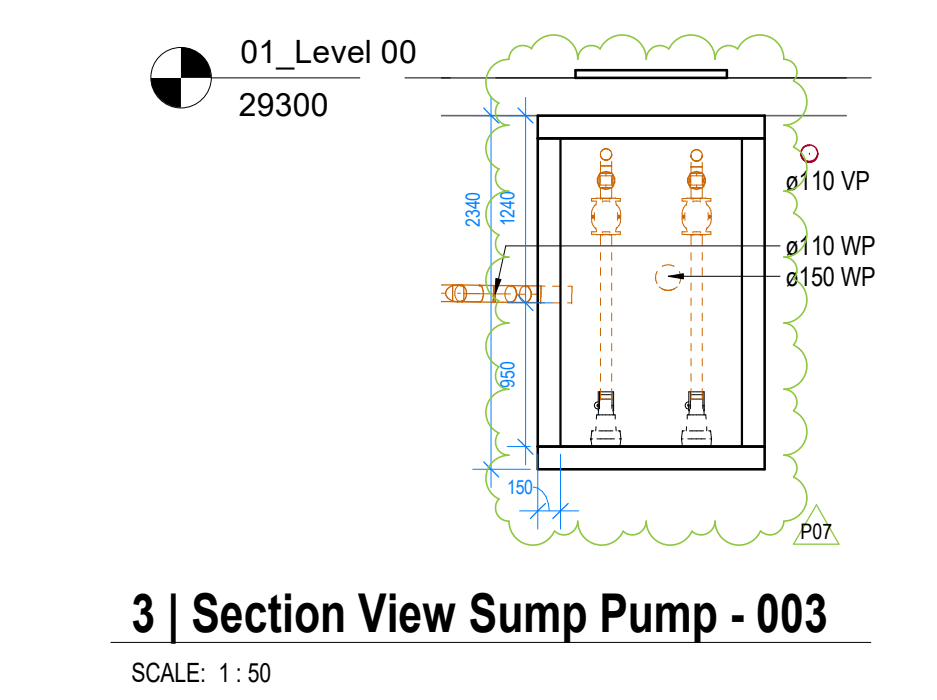
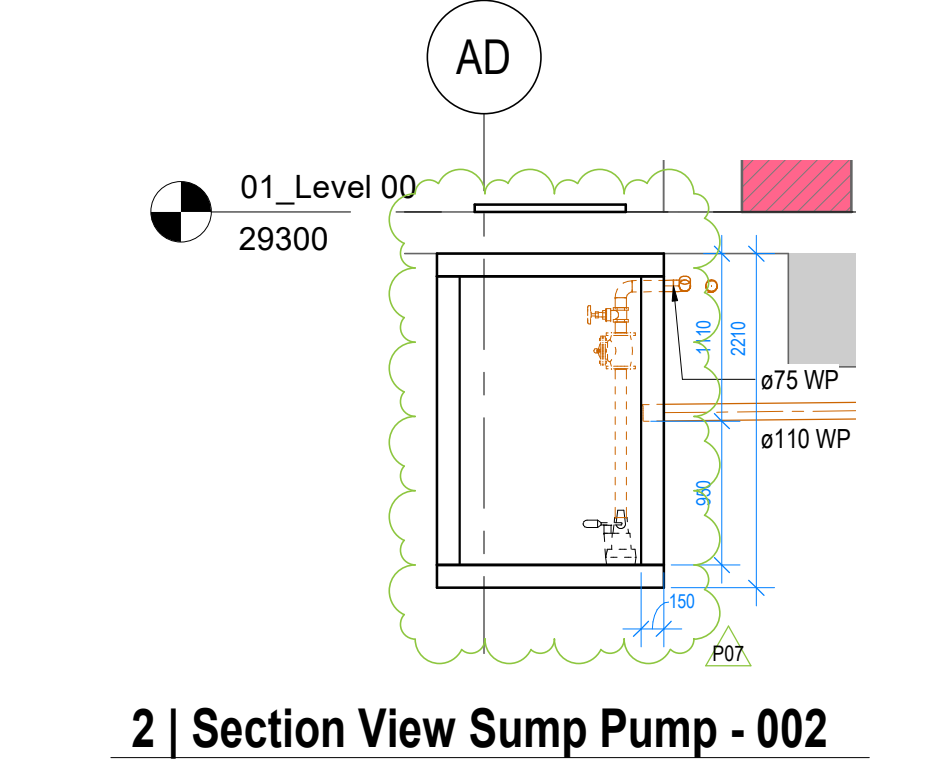
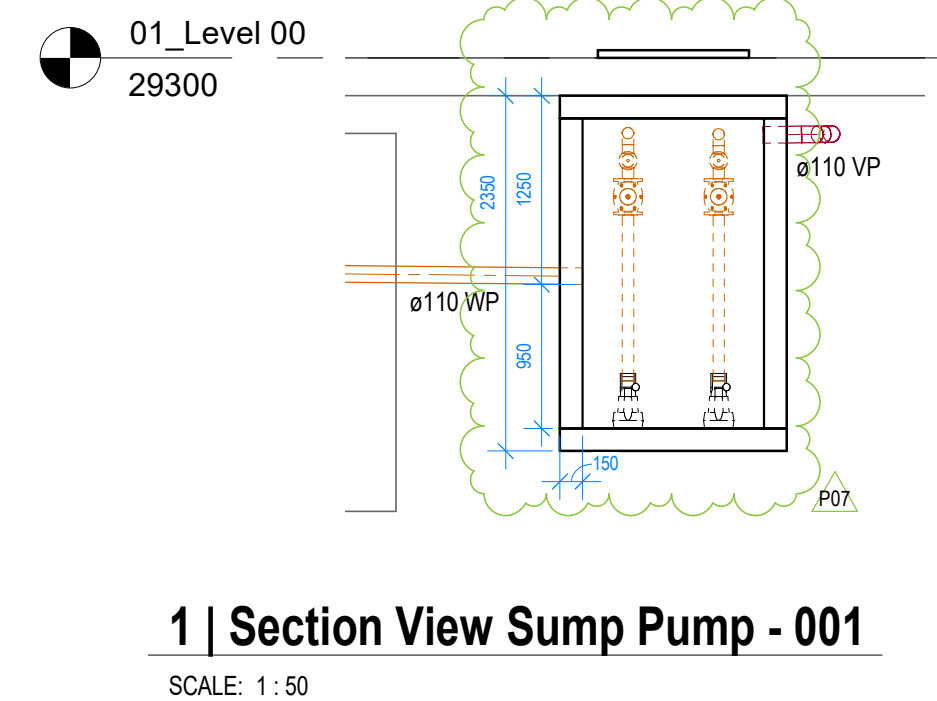
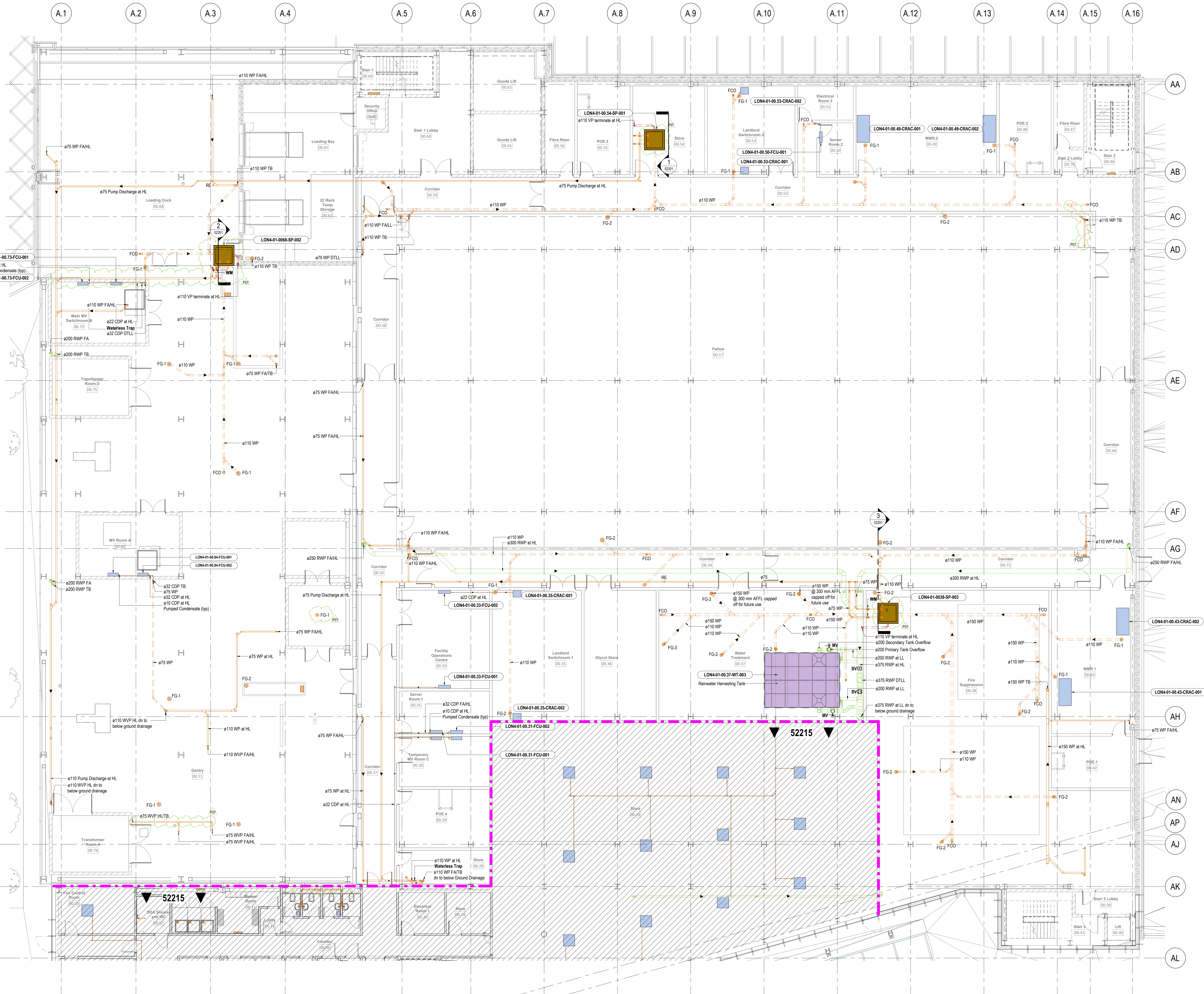
P05

Drawing Number

DCS20109-BWE-DC-01-ZZ-DR-P-52216

Project - Design - Prepare - Issue - Revise - Complete - Archive

A | Drainage Layout - Building 01 - Level 00
SCALE: 1:100



General Notes

- Do not scale from this drawing. All dimensions indicated are in millimetres unless otherwise stated. Verify all measurements on site.
- Any discrepancies between this drawing and other documents should be brought to the attention of the project manager.
- This drawing is not an installation drawing. It is the Contractor's responsibility to make full coordination with all other drawings.
- The contents of this drawing shall be read in conjunction with the current revisions of Architectural, Civil, Structural, Mechanical, Electrical, Security, Systems drawings and all relevant sections of the specifications.

Key Plan

Legend:

- Soil Pipe
- Waste Pipe
- Condensate
- Rainwater
- Vent Pipe
- Trace Heated Pipework
- Pipework Below Ground
- Pipework Above Ground

Abbreviation:

- AAV Air Admittance Valve
- AP Access Panel
- FC Fire Collar
- VTR Vent thru Roof
- SD Shower Drain
- SP Soil Pipe
- SVP Soil Vent Pipe
- URI Urinal
- WC Water Closet
- WHB Wash Hand Basin
- WP Waste Pipe
- WVP Waste Vent Pipe
- RWO Rainwater Outlet
- FCU Fan Coil Unit
- VTR Vent Thru Roof
- CDP Condensate Drain
- TB To below
- FG-1 Floor gully with dry seal trap and funnel
- FG-2 Floor gully with dry seal trap
- FG-3 Closed Top Floor gully For Future use
- FDO Floor Clean Out
- WM Water Meter

Mechanical Asset Nomenclature

LON4-01-00.01-EG-001

- Asset Reference
- Asset Type
- Room Number (Level/Number)
- Building Reference
- Site Code

Notes

- Refer to Client "Asset Naming Convention" document for full details of "Asset Type" abbreviations.

POD	STAGE	DATE	ISSUE	BY	DATE	ISSUE	BY
POD	STAGE 01	NOVEMBER 20	UPDATE	JM	PA	00	04/11/22
POD	STAGE 02	NOVEMBER 20	UPDATE	JM	PA	00	21/11/22
POD	STAGE 03	NOVEMBER 20	UPDATE	JM	PA	00	18/12/22
POD	STAGE 04	NOVEMBER 20	UPDATE	JM	PA	00	30/12/22
POD	STAGE 05	NOVEMBER 20	UPDATE	JM	PA	00	22/01/23
POD	STAGE 06	NOVEMBER 20	UPDATE	JM	PA	00	17/02/23
POD	STAGE 07	NOVEMBER 20	UPDATE	JM	PA	00	15/03/23
POD	STAGE 08	NOVEMBER 20	UPDATE	JM	PA	00	15/03/23
POD	STAGE 09	NOVEMBER 20	UPDATE	JM	PA	00	15/03/23
POD	STAGE 10	NOVEMBER 20	UPDATE	JM	PA	00	15/03/23

Client

colt
Data Centre Services

Lead Consultant: MEP Designer

Architect

NWA

The Old Dairy
Regeneration Team
Redwood, Redwood
15/10/22, United Kingdom
www.nwaarchitects.co.uk

Structural/Consulting Engineer

ARUP

Central Square, Fenchurch Street
London EC3A 3BP, United Kingdom
www.arup.com

File Consultant

salus

Pharma House, Marina Court
High Street, Reading, Berkshire
RG1 1SF, United Kingdom
www.salus.co.uk

Security Designer

Control Risks

Colt Centre, Colton Lane
London, SE1 1DG, United Kingdom
www.controlrisks.com

Project Title

London 4

Drawing Title

Drainage Layout
Building 01
Level 00

Project Status

STAGE 4A ISSUE

Discipline

PLUMBING

Project Number

P20114

Scale

Scale B A0

As Shown

Revision

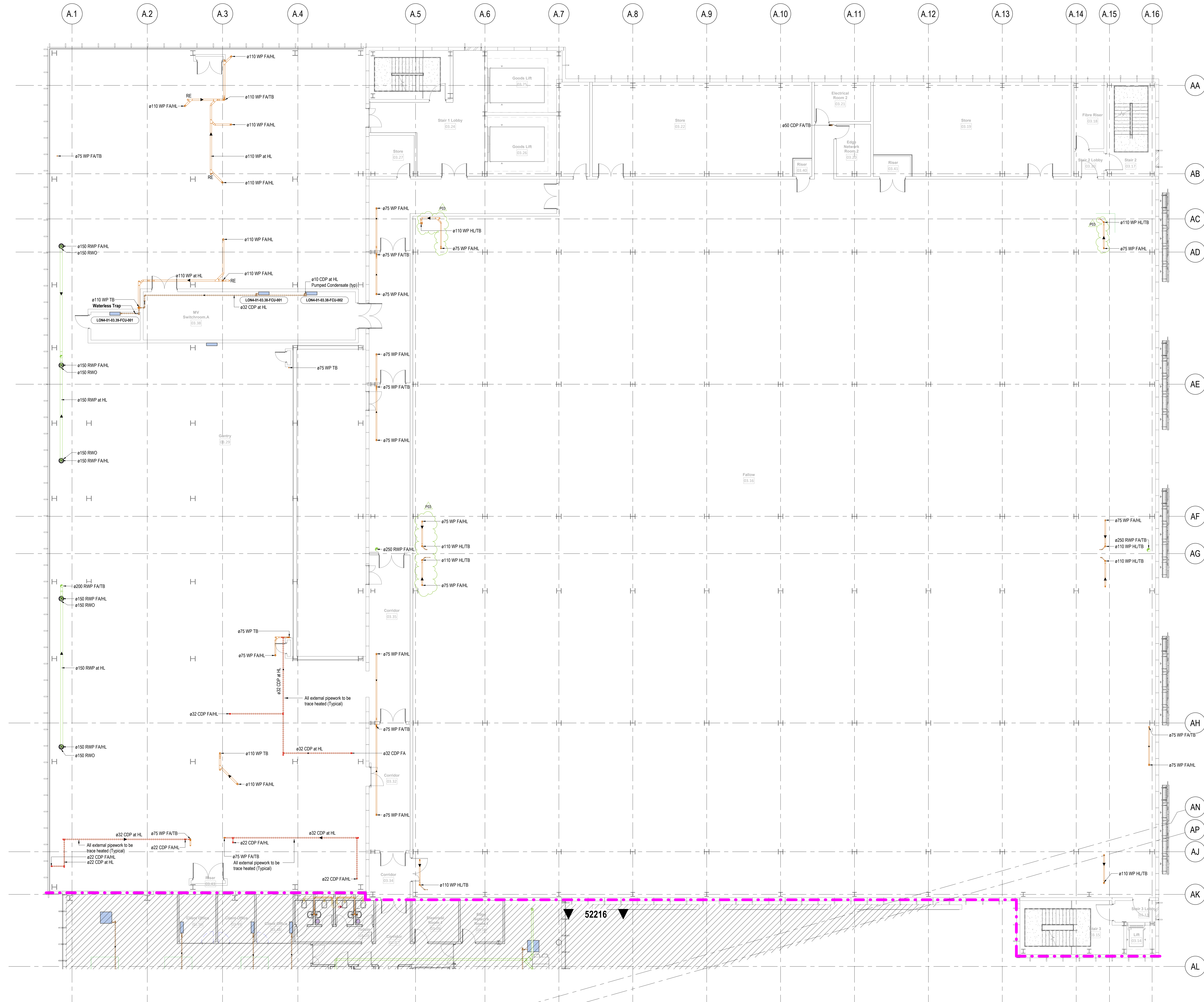
P07

Drawing Number

DCS20109-BWE-DC-01-00-DR-P-52201

Project

Project - Design - Review - Issue - Final - As-Built - Handover



General Notes

- Do not scale from this drawing. All dimensions indicated are in millimetres unless otherwise stated. Verify all measurements on site.
- Any discrepancies between this drawing and other documents should be brought to the attention of the project manager.
- This drawing is not an installation drawing. It is the Contractor's responsibility to make full coordination with all other drawings.
- The contents of this drawing shall be read in conjunction with the current revision of Architectural, Civil, Structural, Mechanical, Electrical, Security, Systems drawings and all relevant sections of the specifications.

1000 0 1000 2000 4000
SCALE: 1:100

Key Plan

Legend:

- Soil Pipe
- Waste Pipe
- Condensate
- Rainwater
- Vent Pipe
- Trace Heated Pipework

Abbreviation:

- Pipework Below Ground
- AAV Downward Flowing Ground Air Admission Valve
- AP Access Panel
- FC Fire Collar
- VTR Vent thru Roof
- SD Shower Drain
- SP Soil Pipe
- SVP Soil Vent Pipe
- URI Urinal
- WC Water Closet
- WHB Wash Hand Basin
- WP Waste Pipe
- WVP Waste Vent Pipe
- RWO RainWater Outlet
- FCU Fan Coil Unit
- VTR Vent Thru Roof
- CDP Condensate Drain
- TB To below
- FG-1 Floor gully with dry seal trap and tunnel top
- FG-2 Floor gully with dry seal trap
- FG-3 Closed Top Floor gully For Future use
- FCO Floor Clean Out
- WM Water Meter

Mechanical Asset Nomenclature

LOM4-01-00-01-EG-001

- Asset Reference
- Asset Type
- Room Number (Level Number)
- Building Reference
- Site Code

Notes

- Refer to Client "Asset Naming Convention" document for full details of "Asset Type" abbreviations.

PKG	STAGE 4A - NOVEMBER 20 UPDATE	JM/PA/100	04/11/22
PKG	STAGE 4A - JULY 22 UPDATE	JM/PA/100	18/07/22
PKG	STAGE 4A - 04/06/22	JM/PA/100	22/08/22
PKG	STAGE 3 - 90% ISSUE	JM/PA/100	17/12/21
PKG	STAGE 3 - 90% ISSUE	JM/PA/100	15/11/21
Rev	Issue	By	Date

Client

colt
Data Centre Services

Colt House, 20 Great Eastern Street
London, EC2A 3EH, United Kingdom
www.coltdatacentres.net

Lead Consultant MEP Designer

&

28-30 Rivington Street
London, EC2A 3EH
United Kingdom
www.de-engineering.com

Architect

NWA

The Old Dairy
Regeneration & Farm
Redcross, Hertfordshire
AL3 7AQ, United Kingdom
www.nwarchitects.co.uk

Structural / Civil Engineer

ARUP

Central Square, Fench Street
Newcastle Upon Tyne
NE1 7PL, United Kingdom
www.arup.com

File Consultant

salus

Phoenix House, Marina Court
High Street, Redditch, Warwickshire
LE10 3EP, United Kingdom
www.salus.co.uk

Security Designer

Control Risks

Coltway Centre, Colton Lane
London, SE1 1DG, United Kingdom
www.controlrisks.com

Project Title
London 4

Drawing Title
Drainage Layout
Building 01
Level 01, 02 & 03
(Typical Follow Floor)

Project Status
STAGE 4A ISSUE

Discipline
PLUMBING

Project Number
P201114

Scale
Scale B A0

Revision
P04

Drawing Number
DCS20109-BWE-DC-01-ZZ-DR-P-52209

Project - Designer - Engineer - Planner - Coordinator - Checker - Approver - Issued

Drawings Development

This drawing has been developed from the following Design Information:

Architectural Model:
DCS20109-AWA-DC-01-ZZ-M5-A-00005.rvt
Revised: 23/10/22

Structural Model:
DCS20109-AWA-DC-01-ZZ-M5-A-00004.rvt
Revised: 23/10/22

Civil Model:
DCS20109-BWE-DC-01-ZZ-P-M5-A-00012.rvt
Revised: 04/12/22

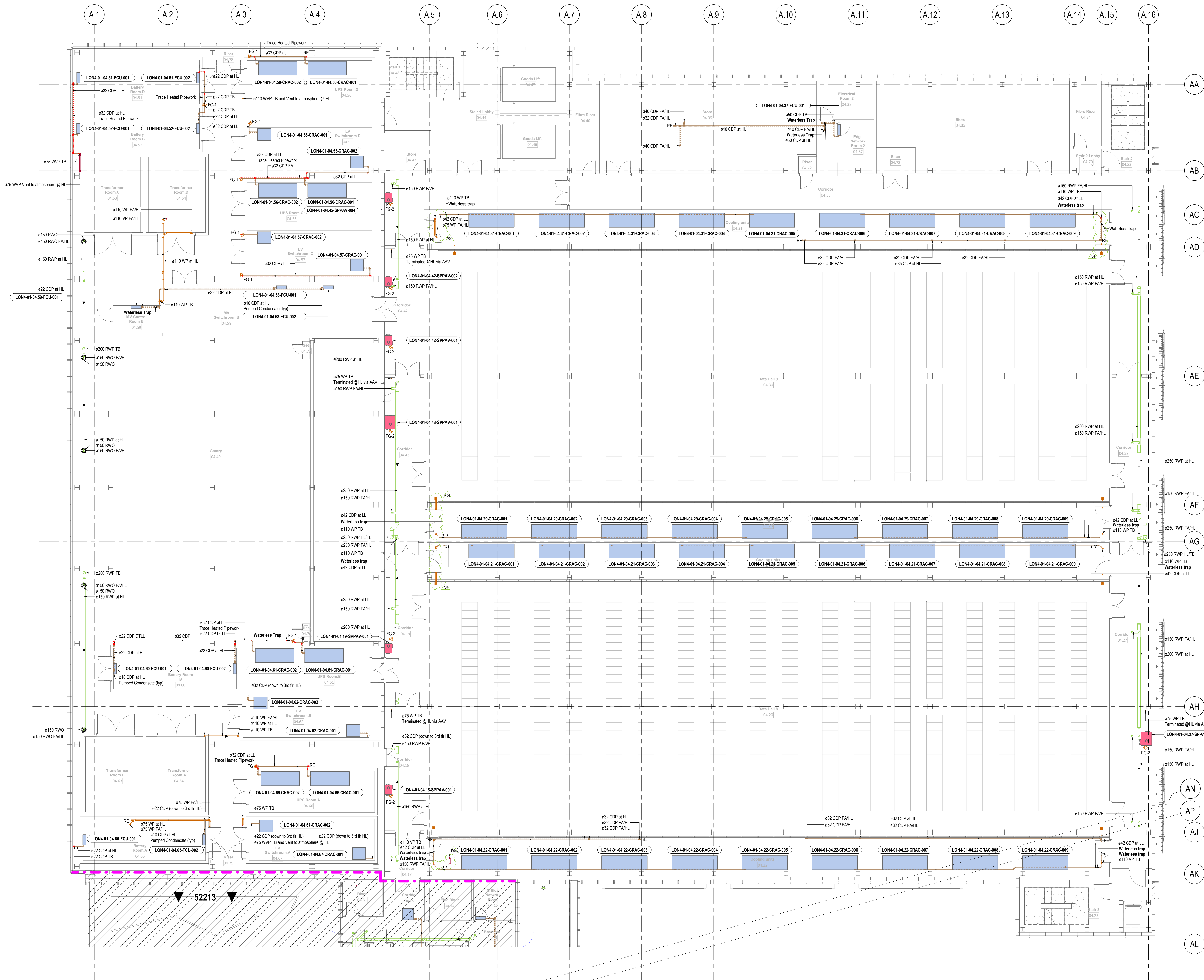
Structural Model:
DCS20109-BWE-DC-01-ZZ-M5-S-00001.rvt
Revised: 23/10/22

Residual Risk Register

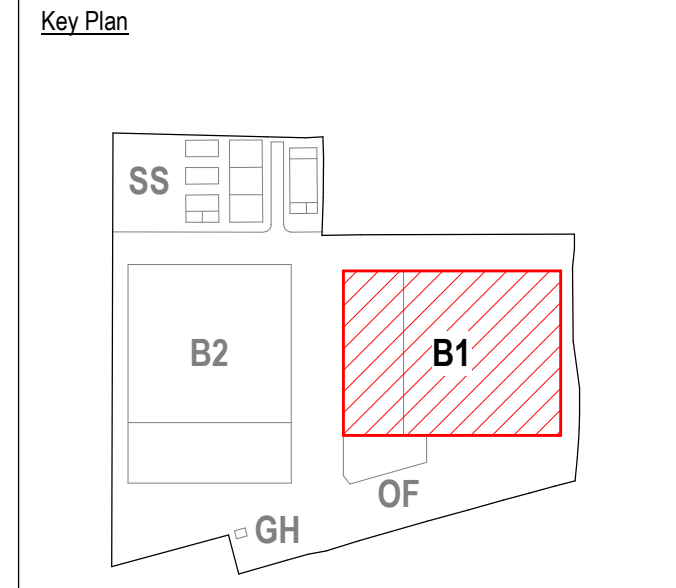
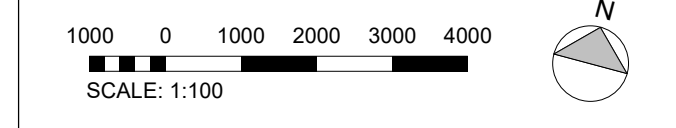
Item: No Residual Risk Identified.

In addition to the hazards / risks normally associated with the types of work detailed on the drawing note the following:

- CONSTRUCTION**
Local Building Regulations shall be complied with in respect to inspection and commissioning.
- MAINTENANCE / CLEANING**
Health and Safety with access regulations shall be observed.
- DECOMMISSIONING / DEMOLITION**
WEEE and RoHS regulations shall be complied with. It is assumed that all work will be carried out by a competent contractor working, where appropriate, to an approved method statement.

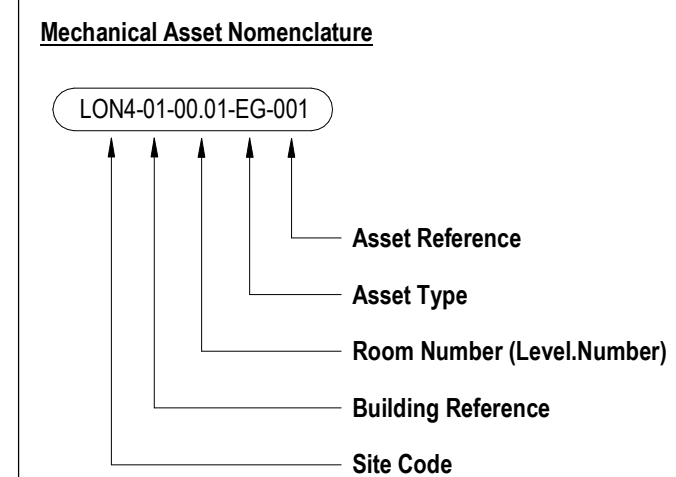


- General Notes
1. Do not scale from this drawing. All dimensions indicated are in millimetres unless otherwise stated. Verify all measurements on site.
 2. Any discrepancies between this drawing and other documents should be brought to the attention of the project manager.
 3. This drawing is not an installation drawing. It is the Contractor's responsibility to make full coordination with all other drawings.
 4. The contents of this drawing shall be read in conjunction with the current revisions of Architectural, Civil, Structural, Mechanical, Electrical, Security, Volume drawings and all relevant sections of the specifications.



- Legend:
- Soil Pipe
 - Waste Pipe
 - Condensate
 - Rainwater
 - Vent Pipe
 - Trace Heated Pipework
 - Pipework Below Ground
 - Pipework Above Ground

- Abbreviation:
- AAV Air Admittance Valve
 - AP Access Panel
 - FC Fire Collar
 - VTR Vent thru Roof
 - SD Shower Drain
 - SP Soil Pipe
 - SVP Soil Vent Pipe
 - URI Urinal
 - WC Water Closet
 - WHB Wash Hand Basin
 - WP Waste Pipe
 - WVP Waste Vent Pipe
 - RWO Rainwater Outlet
 - FCU Fan Coil Unit
 - VTR Vent Thru Roof
 - CDP Condensate Drain
 - TB To below
 - FG-1 Floor gully with dry seal trap and tunnel top
 - FG-2 Floor gully with dry seal trap
 - FG-3 Closed Top Floor gully For Future use
 - FDO Floor Clean Out
 - WM Water Meter



- Notes
1. Refer to Client "Asset Naming Convention" document for full details of "Asset Type" abbreviations.

PH1	STAGE 04 - NOVEMBER 2019 UPDATE	JM	PA/100	04/11/19
PH2	STAGE 04 - JULY 2019 UPDATE	JM	PA/100	18/07/19
PH3	STAGE 04 - 04/06/19	JM	PA/100	22/08/19
PH4	STAGE 3 - 10% ISSUE	JM	PA/100	17/12/19
PH5	STAGE 3 - 90% ISSUE	JM	PA/100	16/11/21
Other: (None)				

Client

colt
Data Centre Services

Lead Consultant MEP Designer

Architect

NWA

Structural / Civil Engineer

ARUP

File Consultant

salus

Security Designer

Control Risks

Drawings Declaration

This drawing has been developed from the following Design Information:

Architectural Model:
DCS20109-000-01-22-MIS-A-00005.rvt
Revised: 23/12/22
DCS20109-000-01-22-MIS-A-00004.rvt
Revised: 23/12/22

Civil Model:
DCS20109-000-01-22-V-P-M-D-00012.rvt
Revised: 06/12/22

Structural Model:
DCS20109-000-01-22-MIS-B-00001.rvt
Revised: 23/12/22

Residual Risk Register

Item:	No Residual Risk Identified.
-------	------------------------------

In addition to the hazards / risks normally associated with the types of work detailed on the drawing note the following:

1. **CONSTRUCTION**
Local Building Regulations shall be complied with in respect to inspection and commissioning.
2. **MAINTENANCE / CLEANING**
Health and Safety with noise regulations shall be observed.
3. **DECOMMISSIONING / DEMOLITION**
WEEE and ROHS regulations shall be complied with. It is assumed that all work will be carried out by a competent contractor working, where appropriate, to an approved method statement.

Project Title
London 4

Drawing Title
Drainage Layout
Building 01
Level 04
(Typical Fit-Out Floor)

Project Status
STAGE 4A ISSUE

Discipline
PLUMBING

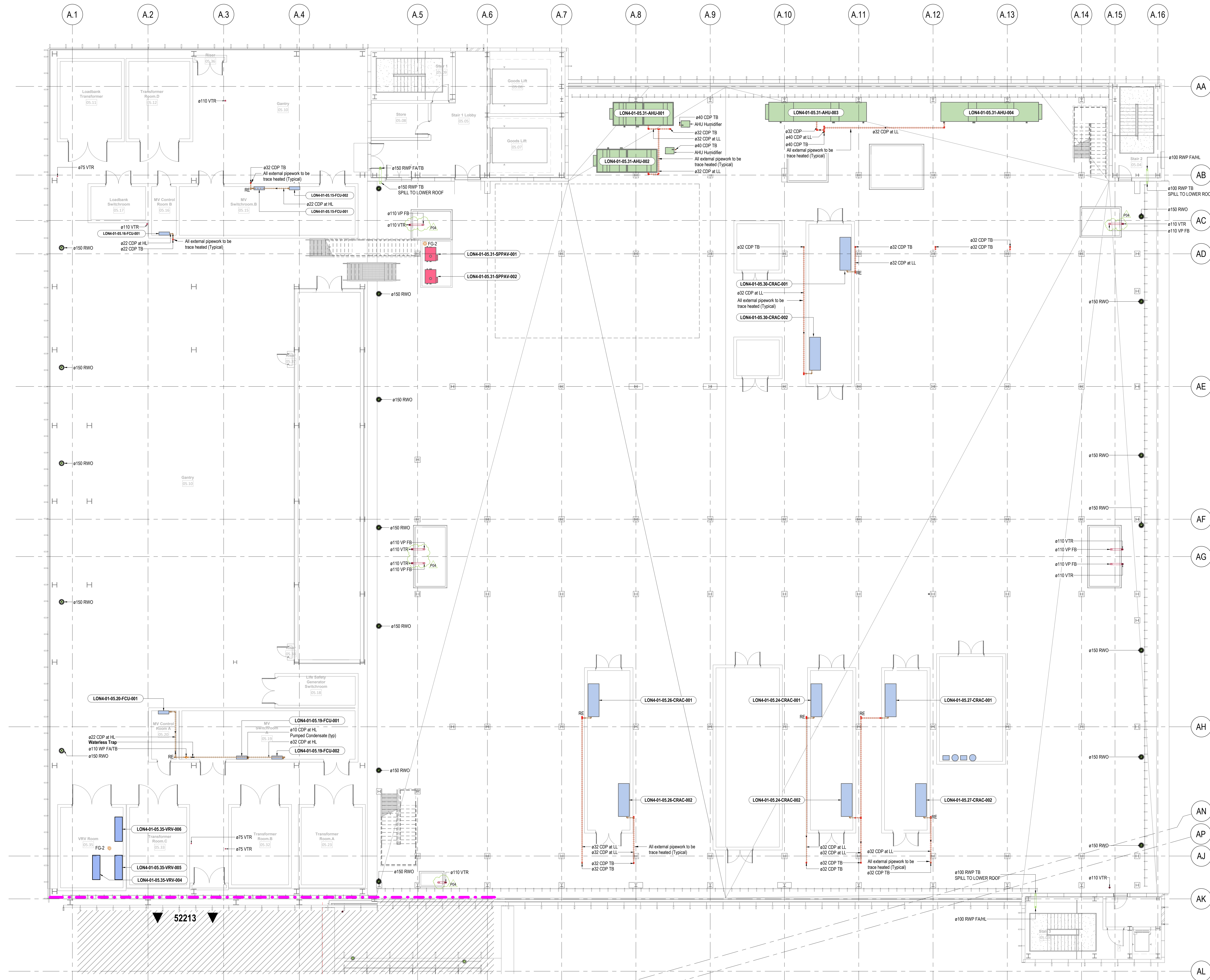
Project Number
P20114

Scale
@ A0
1:100

Revision
P04

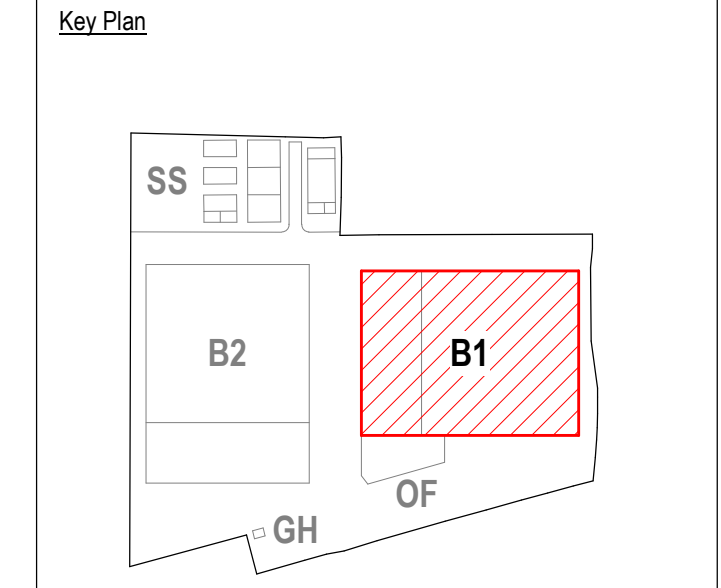
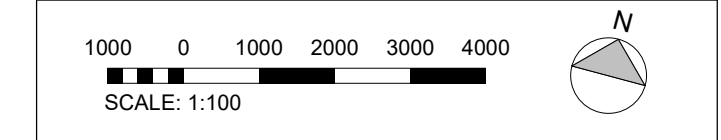
Drawing Number
DCS20109-BWE-DC-01-04-DR-P-52214

Project - Designer - Engineer - Planner - Buyer - User - Fabric - Installer - Supplier



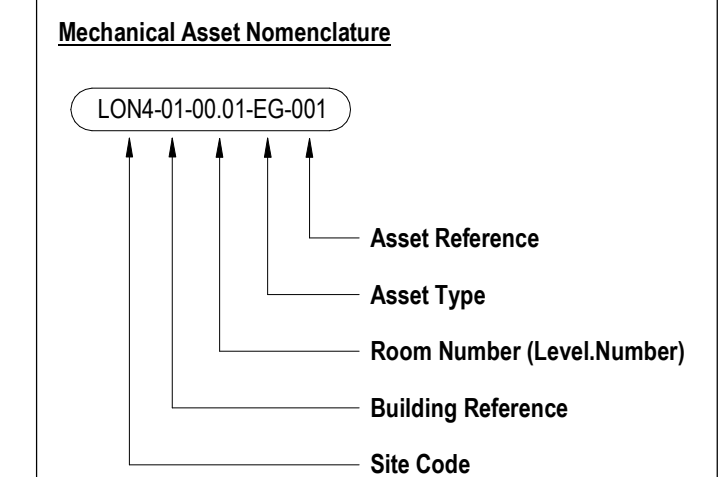
General Notes

1. Do not scale from this drawing. All dimensions indicated are in millimetres unless otherwise stated. Validate all measurements on site.
2. Any discrepancies between the drawing and other documents should be brought to the attention of the project manager.
3. The drawing is not an installation drawing. It is the Contractor's responsibility to make full coordination with all other drawings.
4. The contents of this drawing shall be read in conjunction with the current revisions of Architectural, Civil, Structural, Mechanical, Electrical, Security, Systems drawings and all relevant sections of the specifications.



- Legend:
- Soil Pipe
 - Waste Pipe
 - Condensate
 - Rainwater
 - Vent Pipe
 - Trace Heated Pipework
 - Pipework Below Ground
 - Pipework Above Ground

- Abbreviation:
- AAV Air Admittance Valve
 - AP Access Panel
 - FC Fire Collar
 - VTR Vent thru Roof
 - SD Shower Drain
 - SP Soil Pipe
 - SVP Soil Vent Pipe
 - WC Water Closet
 - WHB Wash Hand Basin
 - WP Waste Pipe
 - WVP Waste Vent Pipe
 - RWO Rainwater Outlet
 - FCU Fan Coil Unit
 - VTR Vent Thru Roof
 - CDP Condensate Drain
 - TB To below
 - FG-1 Floor gully with dry seal trap and funnel top
 - FG-2 Floor gully with dry seal trap
 - FG-3 Closed Top Floor gully For Future use
 - FOD Floor Clean Out
 - WM Water Meter



Notes

1. Refer to Client "Asset Naming Convention" document for full details of "Asset Type" abbreviations.

PK6	STAGE 4A - NOVEMBER 20 UPDATE	JM/PA/00	04/11/22
PK5	STAGE 4A - JULY 22 UPDATE	JM/PA/00	18/07/22
PK3	STAGE 4A - ISSUE	JM/PA/00	22/02/22
PK2	STAGE 3 - 10% ISSUE	JM/PA/00	17/12/21
PK1	STAGE 3 - 50% ISSUE	JM/PA/00	16/11/21
PK1	STAGE 3 - 50% ISSUE	JM/PA/00	16/10/21
PK1	STAGE 2 - 10% ISSUE	DCU/PA/00	16/07/21
PK1	STAGE 2 - 10% ISSUE	DCU/PA/00	16/07/21

Client

colt
Data Centre Services

Colt House, 20 Great Eastern Street, London, EC2A 3EH, United Kingdom
www.coltdatacentres.net

Lead Consultant MEP Designer

&

Architect

NWA

The Old Dairy, Regentbrary Lane, Richmond, Surrey, Surrey, TW9 1JH, United Kingdom
www.nwaarchitects.co.uk

Structural/Civil Engineer

ARUP

Central Square, Fenchurch Street, London, EC3M 5BE, United Kingdom
www.arup.com

File Consultant

salus

Phoenix House, Marina Court, High Street, Reading, Berkshire, RG1 1SF, United Kingdom
www.salus.co.uk

Security Designer

Control Risks

Colt House, 20 Great Eastern Street, London, EC2A 3EH, United Kingdom
www.controlrisks.com

Drawings Development

This drawing has been developed from the following Design Information:

Architectural Model:
DCS20109-001-01-22-MIS-A-00005.rvt
Revised: 23/12/22
DCS20109-001-01-22-MIS-A-00004.rvt
Revised: 23/12/22

Civil Model:
DCS20109-001-01-22-PA-MIS-A-00012.rvt
Revised: 06/12/22

Structural Model:
DCS20109-001-01-22-MIS-S-00001.rvt
Revised: 23/12/22

Residual Risk Register

Item:	No Residual Risk Identified.
-------	------------------------------

In addition to the hazards / risks normally associated with the types of work detailed on this drawing note the following:

1. **CONSTRUCTION**
Local Building Regulations shall be complied with in respect to inspection and commissioning.
2. **MAINTENANCE / CLEANING**
Health and Safety with other regulations shall be observed.
3. **DECOMMISSIONING / DEMOLITION**
WEEE and RoHS regulations shall be complied with.

N.B. It is assumed that all work will be carried out by a competent contractor working, where appropriate, to an approved method statement.

Project Title

London 4

Drawing Title

Drainage Layout
Building 01
Roof Level 01

Project Status

STAGE 4A ISSUE

Discipline

PLUMBING

Project Number

P20114

Scale

1:100

Revision

P04

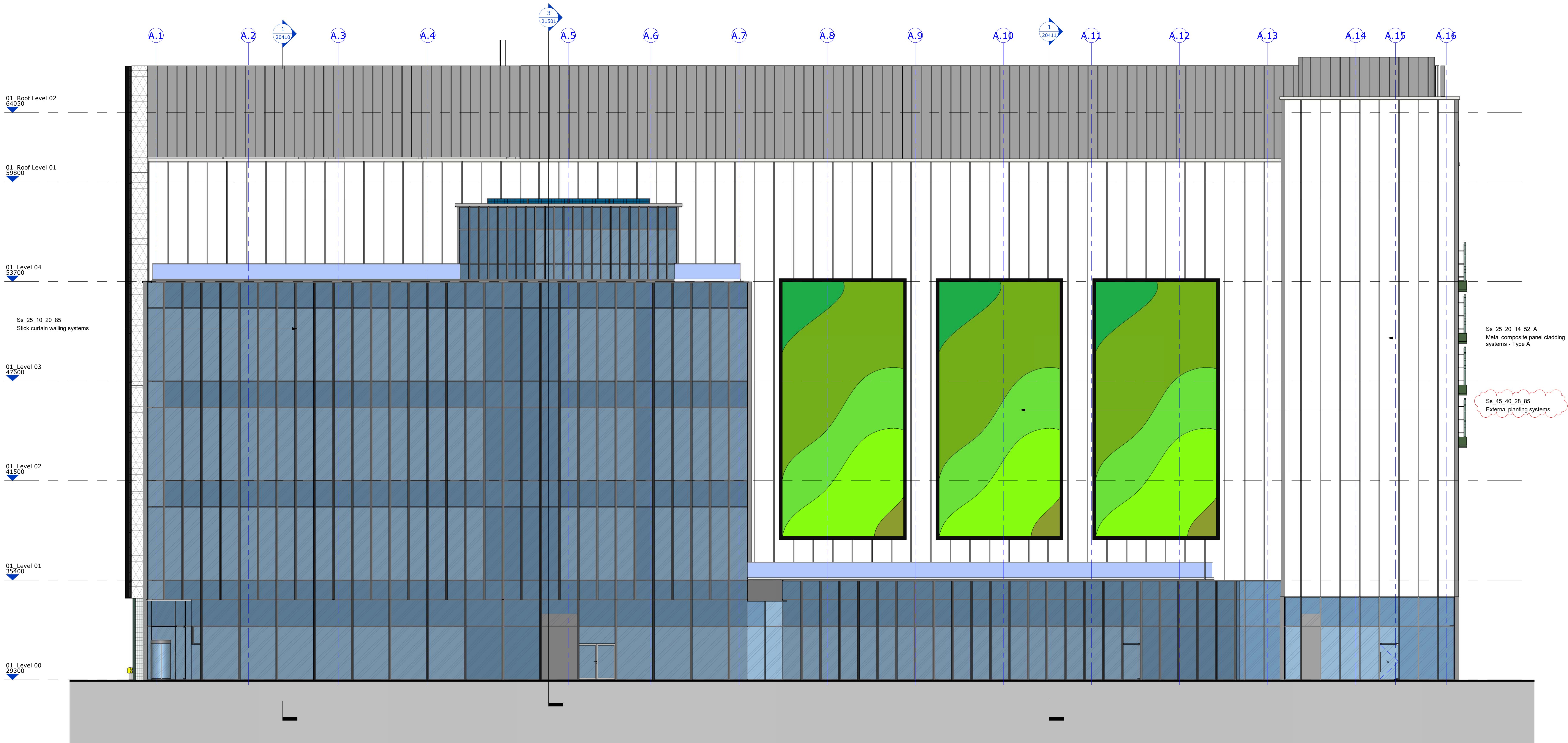
Drawing Number

DCS20109-BWE-DC-01-05-DR-P-52203

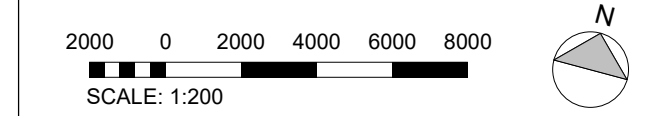
Project - Designer - Engineer - Architect - Planner - Designer - Author

SECTION 2: Living Wall South Elevation

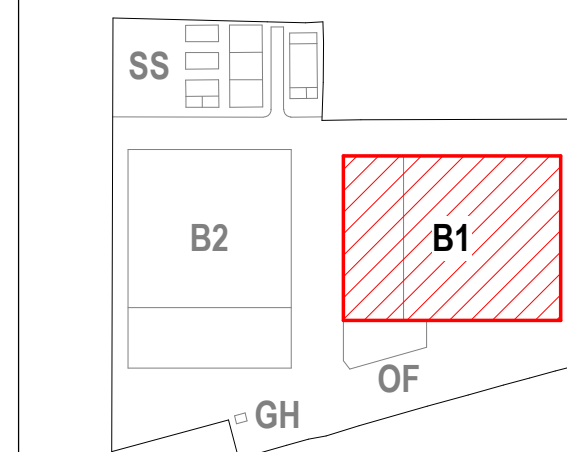
- 1.1 General Elevation
- 1.2 Architects details & Sections
- 1.3 Subcontractor Mobipanel Brochure
- 1.4 Subcontractor drawings
- 1.5 Subcontractor Planting list & photos
- 1.6 Subcontractor Statement for Fire Rating



- General Notes
1. Do not scale from this drawing. All dimensions indicated are in millimetres unless otherwise stated. Verify all measurements on site.
 2. Any discrepancies between this drawing and other documents should be brought to the attention of the engineer.
 3. The drawing is not an installation drawing. It is the Contractor's responsibility to make final coordinated installation shop drawings.
 4. The contents of this drawing shall be read in conjunction with the current revisions of Architectural, Civil, Structural, Mechanical, Electrical, Security, Systems drawings and all relevant sections of the specifications.



Key Plan



PROJ	1ST/STAGE 4B ISSUE	VM	19/07/22
PROJ	1ST/STAGE 4B ISSUE	VM	21/07/22
PROJ	1ST/STAGE 4A - PLANNING CHANGES	VM	22/03/22
PROJ	1ST/STAGE 4A ISSUE	VM	22/03/22
PROJ	1ST/STAGE 3 - 100% ISSUE	BS/SH/AM	11/11/21
PROJ	1ST/STAGE 3 - 90% ISSUE	OLEB	19/11/21
PROJ	1ST/STAGE 3 - 90% ISSUE	OLEB	19/11/21
Other	Issued	By/Checked/Approved	08/08

Client

colt
Data Centre Services

Colt House, 20 Great Eastern Street
London, EC2A 3EH, United Kingdom
www.coltdatacentres.net

Lead Consultant / MEP Designer

&

28-30 Hoxton Street
London, EC2A 3EH
United Kingdom
www.de-engineering.com

Architect

NWA

The Old Dairy
Regeneration Park
Redcross, Redcross
AL3 7JL, United Kingdom
www.norwesthatch.co.uk

Structural / Civil Engineer

ARUP

Central Square, Fenchurch Street
Newcastle Upon Tyne
NE1 7PL, United Kingdom
www.arup.com

Fire Consultant

salus

Princes House, Marina Court
High Street, Redcross, Loughborough
LE11 3EP, United Kingdom
www.salusfire.co.uk

Security Designer

Control Risks

Colt House, Colt House Lane
London, SE1 1DG, United Kingdom
www.controlrisks.com

Project Title

London 4

Drawing Title

Building 1 - South Elevation
General Arrangement

Project Status

STAGE 4B ISSUE

Discipline

ARCHITECTURE

Sheet Code

S4

Project Number

0493

Scale @ A0

1:100

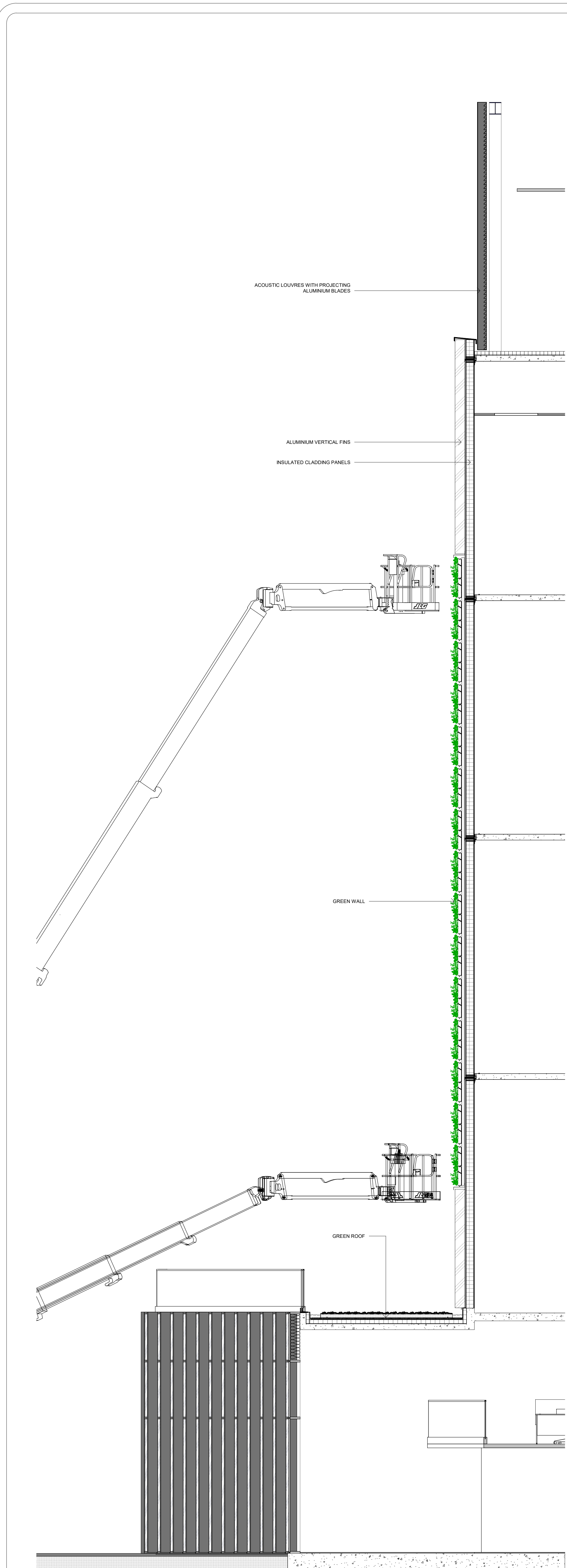
Revision

P05

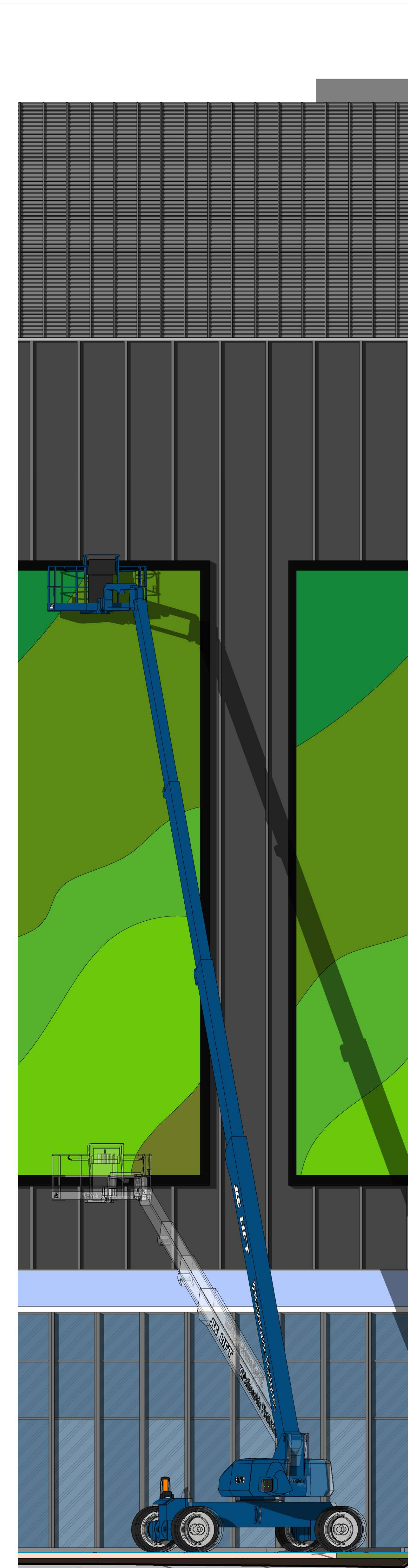
Drawing Number

DCS20109-NWA-DC-01-ZZ-DR-A-20401

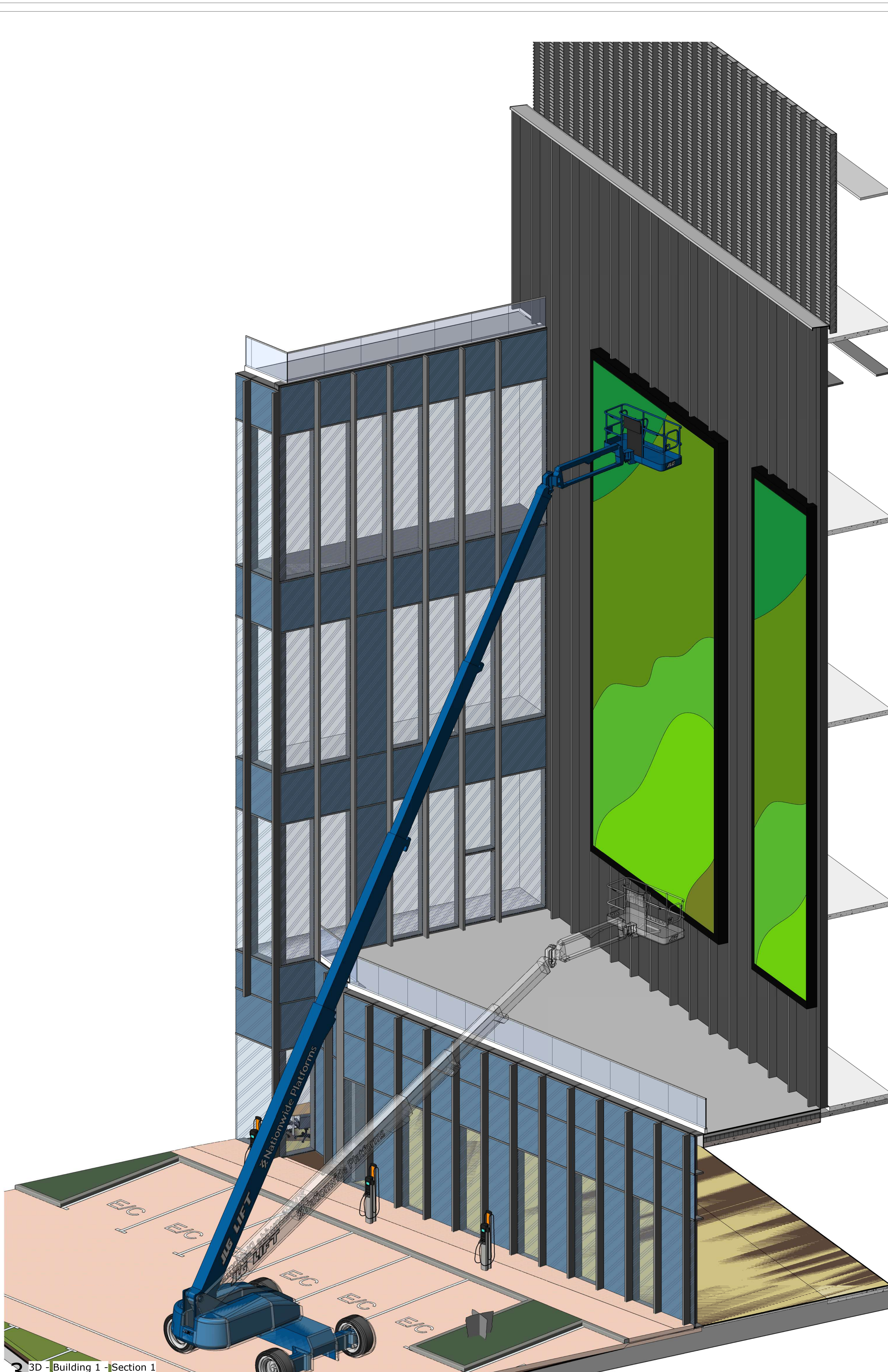
Project - Designer - Engineer - Architect - Client - Planner - Designer - Supplier



1 Building 1 - Section 1
1 : 50



2 Building 1 - Partial Elevation
1 : 50



3 3D - Building 1 - Section 1

General Notes

1. Do not scale from this drawing. All dimensions indicated are in millimetres unless otherwise stated. Verify all measurements on site.
2. Any discrepancies between this drawing and other documents should be brought to the attention of the engineer.
3. This drawing is not an installation drawing. It is the Contractor's responsibility to make final coordinated installation shop drawings.
4. The contents of this drawing shall be read in conjunction with the current revisions of Architectural, Civil, Structural, Mechanical, Electrical, Security, Telecommunications and all relevant sections of the specifications.

2000 0 2000 4000 6000 8000
SCALE: 1:200

Key Plan

SS ALL ZONES
B2 B1
GH OF

1

2:10/2022

By: C/Arch/APP Date:

Client
colt
Data Centre Services
Colt House, 20 Great Eastern Street
London, EC2A 3EH, United Kingdom
www.coltdatacentres.net

Lead Consultant MEP Designer
&
28-30 Hoxton Street
London, EC2A 3EH, United Kingdom
www.de-engineering.com

Architect
NWA
The Old Dairy
Regeneration Park
Redcross, Redcross
AL3 7AQ, United Kingdom
www.nwaarchitects.co.uk

Structural / Civil Engineer
ARUP
Central Square, Firth Street
Newcastle Upon Tyne
NE1 7PL, United Kingdom
www.arup.com

Fire Consultant
salus
Phoenix House, Marina Court
High Street, Redcross, Redcross
LE11 3EP, United Kingdom
www.salusfire.co.uk

Security Designer
Control Risks
Colt House, Colton Lane
London, SE1 1EG, United Kingdom
www.controlrisks.com

Project Title
London 4

Drawing Title
Building 1
External Wall Sections (Sheet 4)

Project Status
PLANNING ISSUE

Discipline
ARCHITECTURE

Project Number
0493

Scale
B A0

Revision
B

Drawing Number
DCS20109-NWA-DC-LP-ZZ-DR-A-12416

Project - Design - Planning - Construction - Operation - Maintenance - Decommission - End of Life