

Sky Garden Wildflower Blanket

SGWB01

Technical Data

Sky Garden Wildflower Blanket

A pre-cultivated UK grown vegetation blanket, containing 38 species specifically chosen to encourage biodiversity on Extensive, Intensive and Podium roof applications. Grown on 25 mm substrate base on a carrier membrane.

Physical Properties

Composition	Base - Geotextile fabric
	Growing Medium – 25 mm Biodiversity Mix
	Vegetation - Plants grown from native provenance seed.
Total Height	150 mm plant height, pre delivered and mown. Fully established height up to c. 1000 mm
Weight (dry)	20 kg/m2
Weight (wet)	25 kg/m2
Consignment Size	40 m2 per Pallet (typical)
Colour	Seasonal Variation
Sizes	2m x 1m

Species Sown

38 Species sown, see overleaf for full list of wildflower and grass species (Subject to seasonal variance).

Specification Description

Sky Garden’s UK provenance Biodiverse Wildflower Blanket contains 38 native species (33 wildflower and 5 grasses) as a pre-grown vegetation cover for use on Extensive and Intensive green roofs, podiums and landscaping projects. Species have been carefully chosen to provide a long flowering season from Spring through to late Autumn. It has a varied range of colour and habitat which is attractive to pollinators and in aesthetic appearance. Sky Garden’s Biodiverse Wildflower Blanket can be used to meet local and national Biodiversity Action Plans and BREEAM energy credits.



System Considerations

- Instant vegetation cover for Wildflower Systems.
- Minimum recommended substrate depth: 100 mm
- Sky Garden recommends annual maintenance of wildflower green roofs, including two visits per year.
- Spring remedial and Autumn cutting, when the vegetation will be trimmed after flowers seeded.



01242 620905

Sky Garden
7 & 8 Keil Close
High Street
Broadway
WR12 7DP



Sky-garden.co.uk

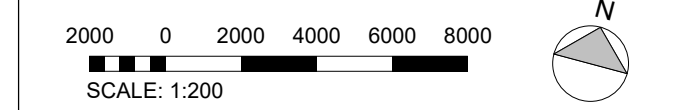
Wildflower

- *Achillea millefolium* (Yarrow)
- *Agrimonia eupatoria* (Agrimony)
- *Anthyllis vulneraria* (Kidney Vetch)
- *Betonica officinalis* (Betony)
- *Campanula glomerata* (Clustered Bellflower)
- *Campanula rotundifolia* (Harebell)
- *Centaurea nigra* (Lesser Knapweed)
- *Echium vulgare* (Viper's Bugloss)
- *Galium verum* (Lady's Bedstraw)
- *Glebionis segetum* (Cornflower Corn Marigold)
- *Hypericum perforatum* (Perforate St John's Wort)
- *Hypochaeris radicata* (Catsear)
- *Knautia arvensis* (Field Scabious)
- *Leontodon hispidus* (Rough Hawkbit)
- *Leucanthemum vulgare* (Oxeye Daisy)
- *Linaria vulgaris* (Common Toadflax)
- *Lotus corniculatus* (Birdsfoot Trefoil)
- *Medicago lupulina* (Black Medic)
- *Papaver rhoeas* (Common Poppy)
- *Plantago media* (Hoary Plantain)
- *Primula veris* (Cowslip)
- *Prunella vulgaris* (Selfheal)
- *Ranunculus acris* (Meadow Buttercup)
- *Rhinanthus minor* (Yellow Rattle)
- *Rumex acetosa* (Common Sorrel)
- *Sanguisorba minor* ssp. *Minor* (Salad Burnet)
- *Scabiosa columbaria* (Small Scabious)
- *Silene dioica* (Red Campion)
- *Silene vulgaris* (Bladder Campion)
- *Thymus* (Thyme)
- *Trifolium pratense* (Red Clover)

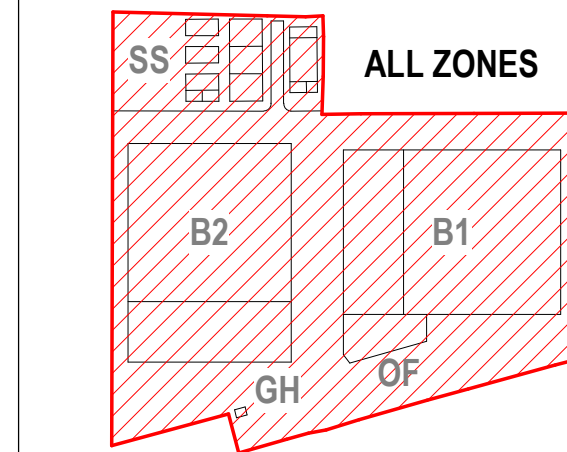
Grasses

- *Agrostis capillaris* (Brown Top Bent)
- *Anthoxanthum odoratum* (Sweet Vernal Grass)
- *Briza media* (Quaking Grass)
- *Cynosurus cristatus* (Crested Dogstail)
- *Festuca rubra* (Red Fescue)

- General Notes
1. Do not scale from this drawing. All dimensions indicated are in millimetres unless otherwise stated. Verify all measurements on site.
 2. Any discrepancies between this drawing and other documents should be brought to the attention of the project manager.
 3. This drawing is not an installation drawing. It is the Contractor's responsibility to make final coordinated installation drawings.
 4. The contents of this drawing shall be read in conjunction with the current revisions of Architectural, Civil, Structural, Mechanical, Electrical, Security, Telecommunications and all relevant sections of the specifications.



Key Plan



Key:

Boundary Line

Parking Provision:

- 65 No Total parking bays, of which:
- 61No. Standard bays
 - 4No. WCH
- Double Bay Active Electric Charging Points:
- 16 No. E/C Parking Bays
 - 49 No. Future provision E/C
- 3No. Motorcycle Parking Bays
- 12No. Cycle Sheffield Racks
- 24 Cycle Parking Allowance

PROJ STAGE 4B ISSUE	VM	14/10/2022
PROJ STAGE 4B ISSUE	VM	01/07/2022
PROJ STAGE 4B ISSUE - PLANNING UPDATES	VM	21/03/2022
PROJ STAGE 4B ISSUE	VM	22/03/22
PROJ STAGE 3 - 10% ISSUE	CLB	11/12/2021
PROJ STAGE 3 - 30% ISSUE	CLB	19/11/2021
PROJ PLANNING ISSUE	CLB	19/12/2021
Rev	By	Checked App

Client

colt
Data Centre Services

Colt House, 20 Great Eastern Street
London, EC2A 3EH, United Kingdom
www.coltdatacentres.net

Lead Consultant MEP Designer

&

28-30 Priory Street
London, EC2A 3AH
United Kingdom
www.de-engineering.com

Architect

NWA

The Old Dairy
Regententhusiasm Farm
Redburn, Hertfordshire
AL3 7JL, United Kingdom
www.nwaarchitects.co.uk

Structural / Civil Engineer

ARUP

Central Square, Firth Street
Newcastle Upon Tyne
NE1 7PL, United Kingdom
www.arup.com

Fire Consultant

salus

Phoenix House, Marina Court
High Street, Redditch, Worcestershire
LE10 3EP, United Kingdom
www.salus.co.uk

Security Designer

Control Risks

Colston Centre, Colston Lane
London, SE1 1EQ, United Kingdom
www.controlrisks.com

Project Title

London 4

Drawing Title

Buildings 1
Site Plan

Project Status

STAGE 4B ISSUE

Discipline

ARCHITECTURE

Sheet Code

S4

Project Number

0493

Scale @ A0

1:200

Revision

P05

Drawing Number

DCS20109-NWA-DC-01-LP-DR-A-10201

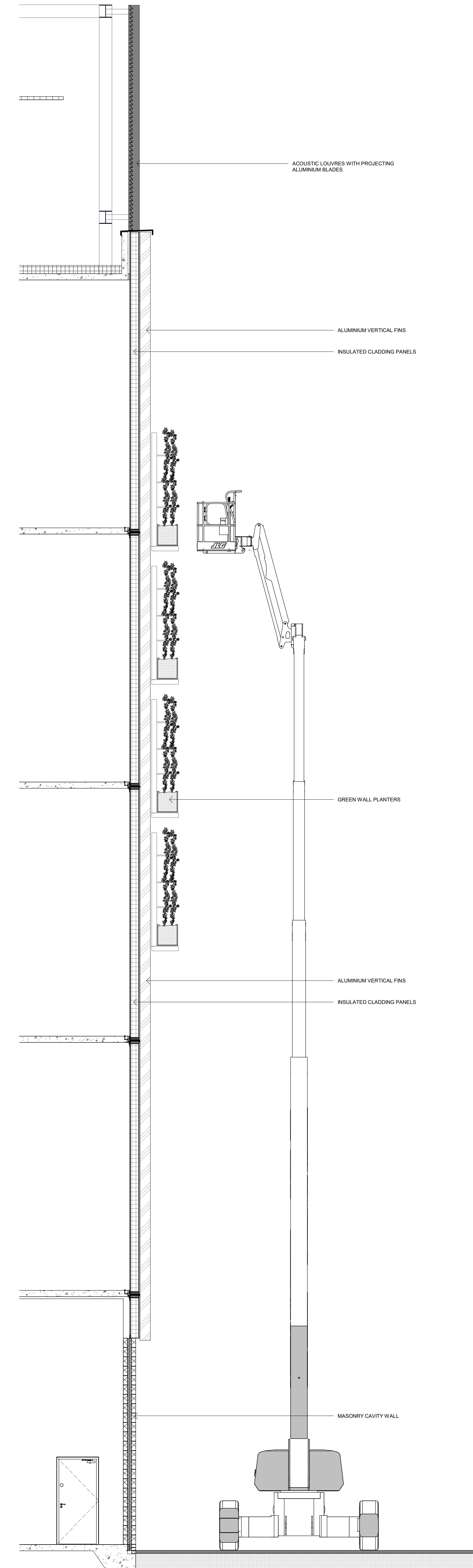
Project - Designer - Checker - Approver - Issue - Issue - Discipline - Author

Status B
Mr Ollie Goodhew - ISG Ltd
Jan 24, 2023, 6:38 AM GMT+0:00

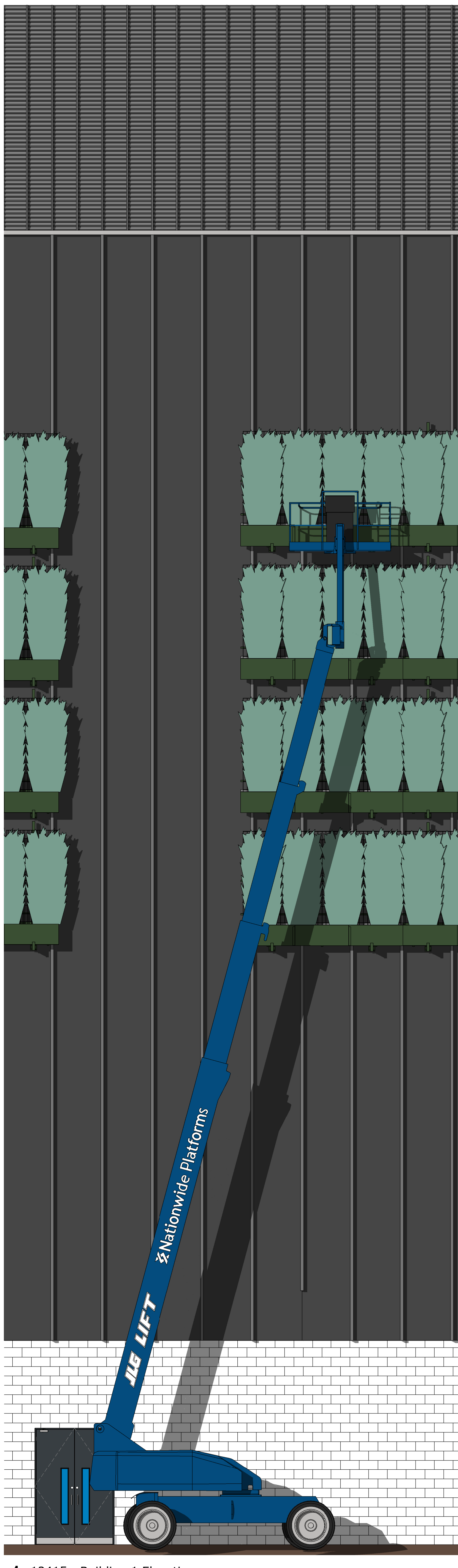
COLT LON4

Planning condition 12 – Living Walls and Roofs

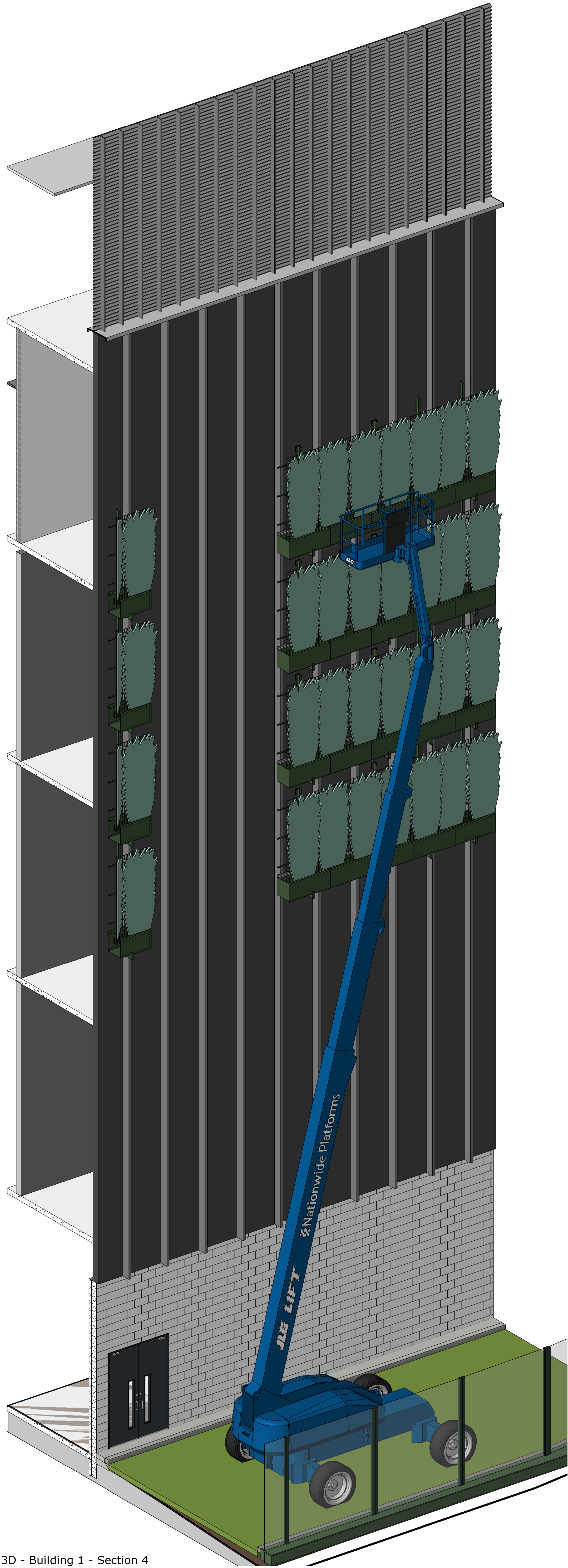
Section 2: Living walls



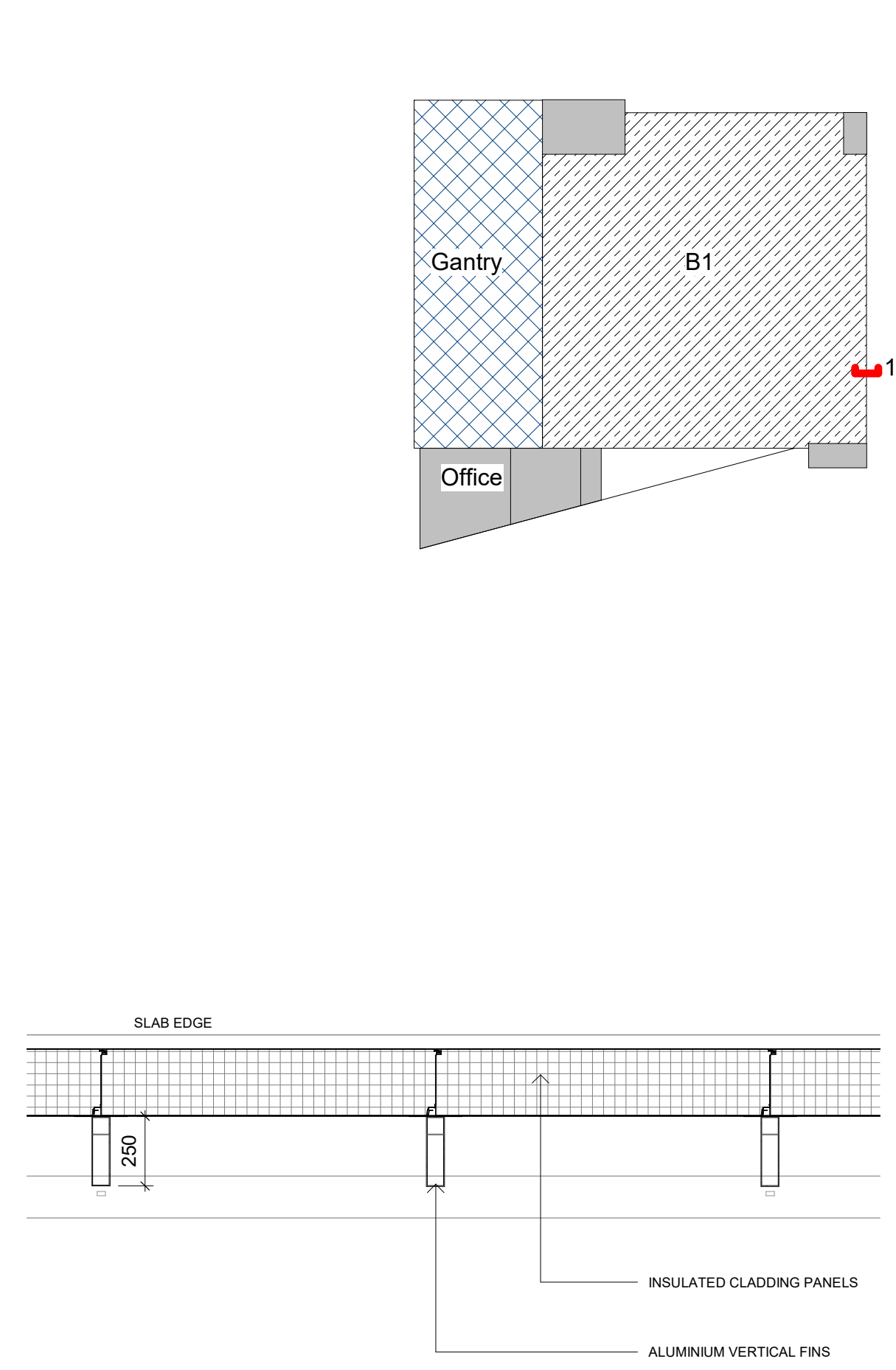
3 Section 8
1 : 50



1 12415 - Building 1 Elevation
1 : 50



2 3D - Building 1 - Section 4



4 Typical Cladding Plan Detail
1 : 20

General Notes

1. Do not scale from this drawing. All dimensions indicated are in millimetres unless otherwise stated. Verify all measurements on site.
2. Any discrepancies between this drawing and other documents should be brought to the attention of the engineer.
3. The drawing is not an installation drawing. It is the Contractor's responsibility to make full coordination with all other drawings.
4. The contents of this drawing shall be read in conjunction with the current revisions of Architectural, Civil, Structural, Mechanical, Electrical, Security, Systems drawings and all relevant sections of the specifications.

2000 0 2000 4000 6000 8000
SCALE: 1:200

Key Plan

SS ALL ZONES
B2 B1
GH OF

20200217 17:00:41 © Build & Well Engineering 20200217 17:00:41

ISSUE 44 ISSUE: PLANNING UPDATE	N/A	21/03/2022
Rev	Contents	By / Check / App / Date

Client
colt
Data Centre Services
Lead Consultant MEP Designer
Colt House, 20 Great Eastern Street
London, EC2A 3EH, United Kingdom
www.coltdatacentres.net

Architect
&
28-30 Finsbury Street
London, EC2A 2AH
United Kingdom
www.de-engineering.com

Structural / Civil Engineer
ARUP
Central Square, Fenchurch Street
London, EC3A 3AF, United Kingdom
www.arup.com

Fire Consultant
salus
Phoenix House, Marina Court
High Street, Ipswich, Suffolk
IP1 3EP, United Kingdom
www.salusfire.co.uk

Security Designer
Control Risks
Cottons Centre, Cottons Lane
London, SE1 1DG, United Kingdom
www.controlrisks.com

Project Title
London 4

Drawing Title
**Building 1
External Wall Sections (Sheet 3)**

Project Status
PLANNING ISSUE

Discipline
ARCHITECTURE

Project Number
0493

Scale
1:20

Revision
B

Drawing Number
DCS20109-NWA-DC-LP-ZR-DR-A-12415

Project - Designer - Engineer - Architect - Planner - Contractor - Client - Fabricator - Installer