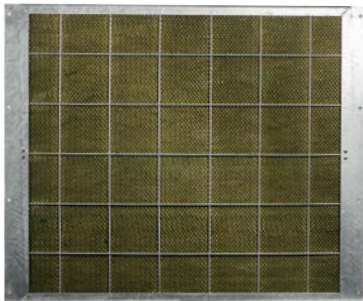


NOISTOP STEEL SPECIFICATIONS

Product	Dimensions/panel	Sound insulation	Sound absorption	Weight
NoiStop Steel	200 x 100 cm, 100 x 100 cm, 200 x 90 cm, 100 x 90 cm, 200 x 45 cm, 100 x 45 cm, 300 x 60 cm	DLR = 21dB(A) = class B2	DLα = 9 dB(A) = class A3	Approx. 24 kg/m ²



NOISTOP STEEL FEATURES

NoiStop Steel has a green polyethylene meshing and a core of compressed stone wool in between galvanised steel framework. NoiStop Steel can also be delivered fully covered by a Mobilane Green Screen.

- Can be customised on-site
- Slender construction: 11 cm deep
- Provided with flanges for simple installation
- Accompanying cover plates and doors available

NOISTOP WOOD SPECIFICATIONS

Product	Dimensions/panel	Sound insulation	Sound absorption	Weight
NoiStop Wood	200 x 100 cm, 100 x 100 cm, 200 x 90 cm, 100 x 90 cm, 200 x 45 cm, 100 x 45 cm	DLR = 21dB(A) = class B2	DLα = 11 dB(A) = class A3	Approx. 24 kg/m ²



NOISTOP WOOD FEATURES

NoiStop Wood has the same rock wool core as NoiStop Steel but is finished with latticework of impregnated wood, combined with aluminium strips and a wire meshing of black polyethylene.

- Slender construction: 17 cm deep
- Provided with flanges on the side for simple installation
- Accompanying cover plates and doors available

Different sizes, finishes without flange and other colours are available on request.

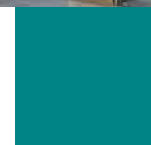


INDOOR PRODUCTS





LivePanel®



The patented LivePanel Indoor system is a unique and innovative vertical green wall. These “living walls” encompass real living plants, adding natural greenery to work and living spaces and helping to create a healthier, happier indoor climate.

MODULAR GREEN WALL SYSTEM

The LivePanel Indoor system transforms otherwise bare walls into attractive vibrant backdrops. LivePanel Indoor is a modular green wall system with exchangeable plant cassettes. The cassettes have slots into which plants are placed. Each row of plant cassettes is placed in a gutter profile that also serves as a water reservoir. The plants absorb water from the reservoir through capillary action. The system can be installed against both new and existing walls.

VERTICAL GREEN

LivePanel Indoor can be used in a multitude of vertical greenery scenarios. The customer can create their green wall to suit, both in terms of design, layout and plant choice. LivePanel Indoor is simple to install on many types of walls. The green wall brings an extra dimension to a room, is easy on the eye yet striking and a real talking point for any interior.



LIVEPANEL INDOOR BENEFITS

- Vertical greenery takes up little space
- Improves the indoor climate and air quality
- Helps increase concentration, productivity and general well-being
- Improves the acoustics in a room
- Insulating and sound-dampening effects
- Lowers stress levels

UNIQUE FEATURES

- Available in any size
- Choose manual or automatic irrigation system
- Fully recyclable
- Economical water consumption and no waste
- Space saving and slim system
- Interchangeable plant cassettes
- Easy and quick installation
- Modular system
- Allows freedom in design and plant choice

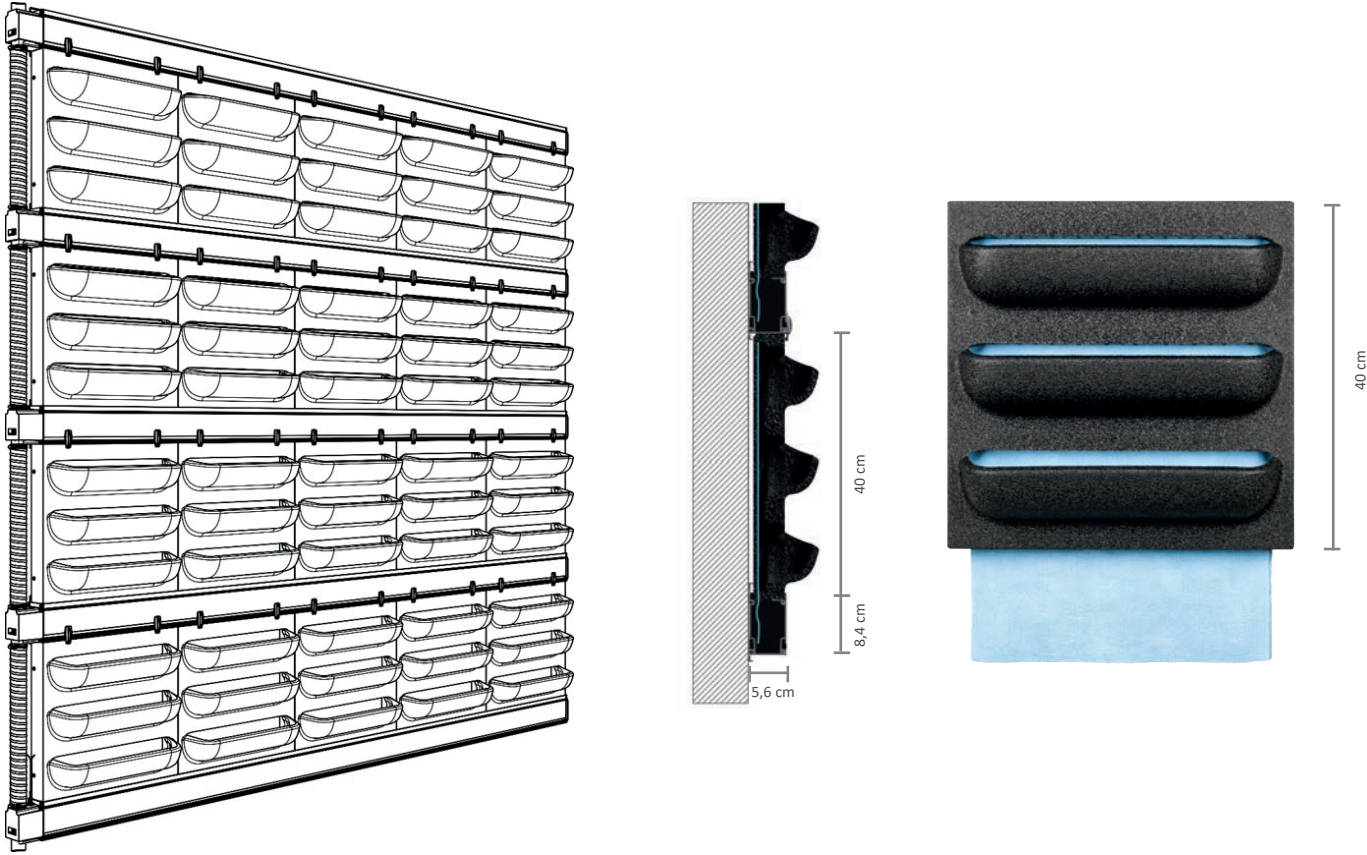
A sustainable plant wall



LivePanel – a real eye-catcher for any interior

LIVEPANEL INDOOR SPECIFICATIONS

Product	Size	Cassettes	Weight (incl plants and water)
LivePanel Indoor	Can be made in any size	Cassette size 40 x 40 cm The cassettes are divisible in two horizontal sections	Max. 40 kg/m²



ADVICE

- For larger walls, it is advisable to install an automatic irrigation unit. An average water consumption of 5 l/m² of landscaped surface per week must be taken into account. This depends on local conditions such as the type of plants, surrounding temperature, air-conditioning and light levels.
- There should always be overflow/drainage considerations when using an automatic irrigation system.
- Water-resistant foil on the rear wall is recommended for indoor use.
- In calculations, tolerances in the aluminium profiles must be taken into account.



LIVEPANEL TANK SPECIFICATIONS

LivePanel TANK is an irrigation system for LivePanel indoor walls. The wall’s water supply is stored within the TANK which is placed at the base of the LivePanel Indoor. The TANK is filled manually, and the system is connected to the power supply for the pump and timer. The pump drives the water supply from the trough within the tank. As the system does not require connection to a water supply or drainage, it is ultra-efficient in its water consumption.

WATER SUPPLY

The water supply within the tank is sufficient to irrigate a LivePanel wall for a few weeks. The number of weeks depends on the height of the wall, i.e., the quantity of cassettes on top of each other. The pump should generally be switched on once a week and this is controlled by setting the system’s timer (supplied). This allows for irrigation timings outside of office hours. Plant feed should be added to the water supply within the tank.

DIMENSIONS

The LivePanel TANK can be used for LivePanel Indoor wall with a maximum formation of 10 x 10 cassettes. Each cassette is 40 x 40 cm. The tank is 42 cm high and 18 cm deep. Its width is determined by the width of the LivePanel Indoor wall. For the ultimate finish, an optional matching frame can be placed around the cassettes. This gives the whole a finished and luxurious look

LIVEPANEL TANK BENEFITS

- Efficient water consumption and no wastage
- Water tank for ± 4 weeks depending on the size of the wall
- No water inlet and outlet required
- Low maintenance

UNIQUE FEATURES

- Space-saving and slim system
- Integrated watering system
- Modular system
- Easy and quick installation
- Fully recyclable





LivePanel PACK®

READY-MADE GREEN WALL AS STANDARD

LivePanel PACK is a green wall system available in four standard dimensions. It is delivered as a ready-made package. This modular green wall system can be easily and quickly converted into a green wall. It is ideal for spaces with one or more small wall surfaces. The modular green wall system consists of large gutter profiles fitted with a water tank that is filled by hand, and with interchangeable plant cassettes with slots. These profiles are easily filled manually with water.

SPACE-SAVING

LivePanel PACK can be affixed to new or existing walls in indoor or outdoor environments. The various sizes and creative plant options make LivePanel PACK a flexible, space-saving green wall system with an unlimited range of applications.



LIVEPANEL PACK BENEFITS

- Vertical greenery takes up little space
- Improves the indoor climate and air quality
- Helps increase concentration, productivity and general well-being
- Improves the acoustics in a room
- Insulating and sound-dampening effects
- Lowers stress levels

UNIQUE FEATURES

- Manual watering
- Available in four sizes
- No electricity, pump or water drainage required
- Economical water consumption and no waste
- Space saving and slim system
- Interchangeable plant cassettes
- Easy and quick installation
- Fully recyclable
- Freedom in design and plant choice

All-in-one green wall system

43



Space saving and easy to install

44

MOBILANE.CO.UK

LIVEPANEL PACK SPECIFICATIONS

Product	Dimensions (w x h)	Number of cassettes	Weight (empty)	Water volume
LivePanel PACK 2 x 2	0.87 x 1.09 cm	4	10.8 kg	4,2 litres
LivePanel PACK 2 x 3	0.87 x 1.57 cm	6	15.2 kg	6,3 litres
LivePanel PACK 3 x 2	1.27 x 1.09 cm	6	16 kg	6,3 litres
LivePanel PACK 6 x 4	2.48 x 2.06 cm	24	51.6 kg	24,5 litres



2 X 2



2 X 3



3 X 2



6 X 4





LiveDivider PLUS®

LiveDivider PLUS, the new version of LiveDivider, is a modular green room divider. This unique system allows modules with interchangeable cassettes that serve as planters to be stacked on top of each other as you wish. This creates more freedom for the flexible division of spaces while surrounding people with greenery. Remote working and flexible workstations have become the new standard in the design and refurbishment of offices. After all, offices today are serving more and more as places where employees come to meet with one another in an inspirational environment where they feel at ease. Plants make a valuable contribution to such an environment.

PRIVACY AND DISTANCE

The LiveDivider PLUS makes it easy to arrange and divide large spaces exactly as you want them. This is precisely what makes this room divider so well suited for use in offices, waiting rooms, hotels, public buildings and more. This room divider is also an ideal solution for defining pedestrian routes for social distancing. Plants enhance the space for the well-being of employees and visitors. LiveDivider PLUS creates more privacy and distance while retaining the open aspect of a given space. The system consists of individual modules made of steel with interchangeable cassettes that serve as planters. Plants can be interchanged to adapt to the season, theme or a specific occasion.

DESIGNER FURNITURE

The modern and timeless room divider is made of high quality, powder coated steel. Its streamlined design and sleek lines make a genuinely impressive green statement in any interior. The modules are installed on a solid base plate. A watering system with a tank is incorporated into each module. This ensures that the plants are supplied with the right amount of water and plant food for up to six weeks. LiveDivider PLUS does not require any electricity, pumps or drainage systems and can therefore be installed in many different places.



LIVEDIVIDER PLUS BENEFITS

- A simple and sustainable way to divide spaces
- Improves acoustics and dampens sound
- Improves the indoor climate and air quality
- Improves concentration, productivity and general well-being, reducing stress
- Takes up little space

UNIQUE FEATURES

- Modular and multi-applicable
- Maintains water supply for 4 - 6 weeks, with water level gauge
- Sustainable, reusable and fully recyclable
- No electricity, pump or water drainage required
- Low maintenance
- High quality design
- Free-standing with plants on both sides
- Interchangeable planter cassettes with space for different types of plants



The green and sustainable room divider

47

Clever stackable system

48

MOBILANE.CO.UK

SPECIFICATIONS LIVEDIVIDER PLUS

Description	Dimensions (W x H x D)	Number of cassettes	Weight (empty)	Water volume
LiveDivider PLUS 1	112 x 81 x 19 cm	4	57.4 kg	17.5 litres
LiveDivider PLUS 2	112 x 131 x 19 cm	8	76.0 kg	35 litres
LiveDivider PLUS 3	112 x 180.5 x 19 cm	12	94.6 kg	52.5 litres



LiveDivider PLUS 1 LiveDivider PLUS 2 LiveDivider PLUS 3

8cm 19cm 8cm



30cm



AVAILABLE COLOURS



White



Black



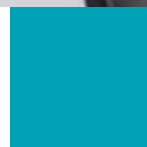
Custom

The LiveDivider PLUS is available in white and black as a standard and can be supplied in any RAL colour on request.





LivePicture®



LivePicture embodies innovation, design and landscaping to deliver stunning effects. The frame includes an integrated watering system with reservoir to ensure that the plants are provided with water for four to six weeks. The innovative patented construction requires no electrical connection. LivePicture can be easily and quickly mounted on any wall using just a few screws.

HEALTHY INDOOR CLIMATE

Plants make an important contribution to the indoor climate, through their production of oxygen, purification of the air and positive effect on relative humidity. Scientific research has shown that anyone who spends more than four hours per day in a room with plants will find it more pleasant and will be demonstrably more productive.

SPACE-SAVING

LivePicture is a stylish and space-saving solution to include plants in any interior environment. Rooms with limited space for plant pots will benefit from the wall-mounted placement of LivePicture. LivePicture requires minimal maintenance.



LIVEPICTURE BENEFITS

- Vertical greenery takes up little space
- Improves the indoor climate and air quality
- Helps increase concentration, productivity and general well-being
- Improves the acoustics in a room
- Sound-dampening effects
- Lowers stress levels

UNIQUE FEATURES

- Unique visual impact
- Water tank for 4 - 6 weeks, equipped with full and empty indicators
- No electricity or pump required
- Fully recyclable
- Interchangeable plant cassettes and frame
- Integrated watering system
- Quick and easy installation
- For indoors and outdoors

Living picture made up of plants



51

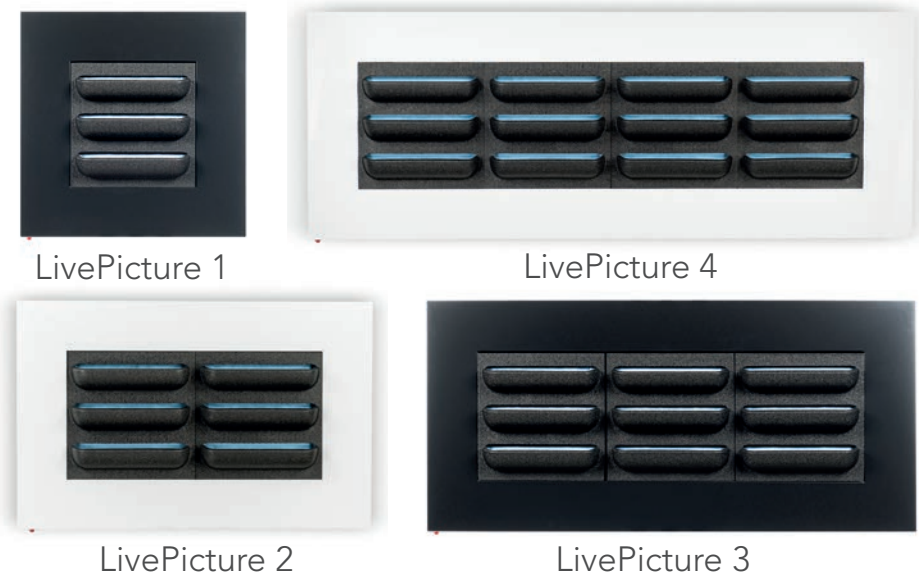
Natural green with a modern twist

52

MOBILANE.CO.UK

LIVEPICTURE SPECIFICATIONS

Product	Dimensions (w x h x d)	Number of cassettes	Weight (empty)	Water volume
LivePicture 1	72 x 72 x 7 cm	1	12.0 kg	14 litres
LivePicture 2	112 x 72 x 7 cm	2	16.6 kg	19 litres
LivePicture 3	152 x 72 x 7 cm	3	21.1 kg	24 litres
LivePicture 4	192 x 72 x 7 cm	4	25.5 kg	29 litres



AVAILABLE COLOURS



Other (RAL) colours and personalisation with own logo, design or photo are possible on request.





LivePicture GO®

LivePicture GO offers a playful way of adding vertical greenery to your living, learning or working environment. Even if you do not have green fingers, the plants stay healthy and beautiful with little effort required. The LivePicture GO empty indicator shows when the water tank needs to be filled. The tank holds enough to water the plants for \pm 4 weeks. The capillary technology of the plant cassette ensures the plants always have the right amount of water.

SIMPLE GREEN

The slots of the removable plant cassette are filled with plants based on your own preferences and tastes. LivePicture GO is highly versatile; it can be used indoor and outdoor, in a single or a modular set-up. Create a playful collage using multiple LivePicture GO units. Easily mount the living picture using the two screws and installation template provided.

NEW: LIVEPICTURE GO BAMBOO

New is LivePicture GO Bamboo, made of sustainable bamboo fibres. Bamboo is a natural and sustainable material and has a low environmental impact. Bamboo is biodegradable and 100% recyclable. This natural and sustainable material ensures that any LivePicture GO is unique. Not only the plants, but the frame also makes the LivePicture GO Bamboo green.



LIVEPICTURE GO BENEFITS

- Vertical greenery takes up little space
- Improves the indoor climate and air quality
- Helps increase concentration, productivity and general well-being
- Improves the acoustics in a room
- Sound-dampening effects
- Lowers stress levels

UNIQUE FEATURES

- Water tank for \pm 4 weeks, equipped with full and empty indicators
- No electricity or pump required
- Fully recyclable
- Interchangeable plant cassettes
- Lightweight
- Integrated watering system
- Quick and easy installation
- For indoors and outdoors
- 100% recyclable

Plant painting for home

55



Add vertical greenery in a playful way

56

MOBILANE.CO.UK

LIVEPICTURE GO SPECIFICATIONS

Product	Dimensions (w x h x d)	Number of cassettes	Weight (empty)	Water volume
LivePicture GO	51.6 x 51.6 x 11.2 cm	1	2.7 kg	2 litres

5cm 6cm



AVAILABLE COLOURS



White



Bamboo
Natural



Bamboo
Black

Other (RAL) colours and
personalisation with own logo,
design or photo are possible on
request.





LiveSpectrum®

A successful installation of LivePicture GO, LivePicture, LivePanel Indoor and LivePanel PACK will depend on its access to light. Not all locations have sufficient light exposure – the “daylight spectrum” – that plants need for healthy growth. LiveSpectrum is a series of light fittings that have been specially developed to simulate and emulate natural daylight.

These LED fixtures have full spectrum colour rendering and are available in a range of light intensities. The LiveSpectrum luminaires (lighting units) are suitable for mounting on or fixing into ceilings and are equipped with energy-saving long-life LEDs. The LED lights are also dimmable to allow the user to select suitable brightness levels for all LivePicture and LivePanel products.

LIVESPECTRUM LUMISSION FEATURES

- Colour temperatures available: 3000K (warm white) or 4000K (natural white)
- Excellent replication of natural light
- LED module shielded with glass
- Luminaires can be rotated and tilted to suit
- Individual lights can be dimmed separately



LIVESPECTRUM PARUS FEATURES

- A Grow White light, with a suitable spectrum for plants
- 30-120 degree lenses to group or spread the light reach
- Easy to attach to ceiling systems
- Can be suspended by using a suspension fitting
- Available in different sizes (60, 90, 120 and 150 cm)
- Optional: Luminaires can be dimmed with a “smart” controller & timer: 0 ~ 100%



LIVESPECTRUM MOBILIGHT FEATURES

- Colour temperatures available from warm to natural white; 2700k, 3000k, 3500k and 4000k
- Excellent replication of natural light temperatures
- Adjustable luminaire with a 3-phase track
- 350° horizontally rotatable and vertically 90° adjustable
- Easy to attach to ceiling systems
- Can be suspended by using a suspension fitting
- Lens and reflector options available to group or spread the light reach
- Luminaires available in white, silver grey and black
- Luminaires can be dimmed



LiveSpectrum - Providing a natural daylight alternative with led

LiveSpectrum helps supports the daylight function





WE CARE

Our mission is to create **green, healthy** and **sustainable** environments.



DARTHUIZER PRODUCTION

