

Project title	Colt London 4	Job Number
Report title	Maintenance Schedule for Living Walls	0493

**Document
Revision
History**

Revision Ref	Issue Date	Purpose of issue / description of revision
A	23 rd March 2022	First Issue

**Document
Validation (latest
issue) A**

Colt Data Centre – Maintenance Schedule

Monthly Visits

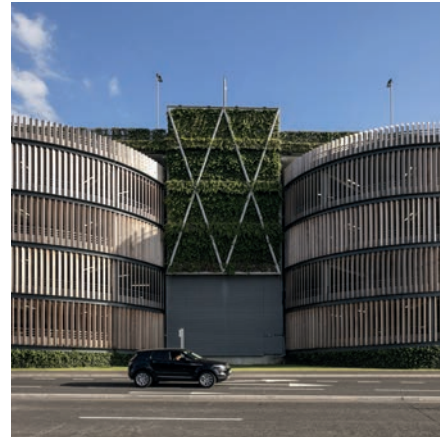
- Overall inspection of the wall in general
- Check moisture levels
- Check that the irrigation system is working correctly
- Adjust irrigation setting as and when seasonally required
- Check the wellbeing of plants and check for common pests and disease
- Carry out any necessary remedial works of the living wall
- Plant replacement for any natural failing plan
- Remove any decay foliage or weeds
- Prune when the plants seasonally require attention
- Sweep, leaving area clean, tidy, and free from debris
- The main objective of the monthly visit is to ensure the irrigation system is working as it should be

Quarterly Visits

- To include all the above of high-level planting

NWA_{plc}

Chartered Architects



THE BIGGEST WALLPLANTER IN THE UNITED KINGDOM

- Bracknell Town Centre Regeneration
- 800 square metres of vertical greenery
- Contributes to the greening of urban areas
- Contributes to biodiversity
- Reduces fine dust by 40 - 60%
- Fully grown





MOBILANE

In 2000 Mobilane first opened its doors in The Netherlands, as part of the Darthuizer Group - a family-owned business with three subsidiaries: Darthuizer Nursery, Oase-Lease and Mobilane. The Darthuizer Group has been providing quality and innovation for almost 100 years. Mobilane is a specialist in developing and marketing instant indoor and outdoor landscaping systems.

INTERNATIONAL

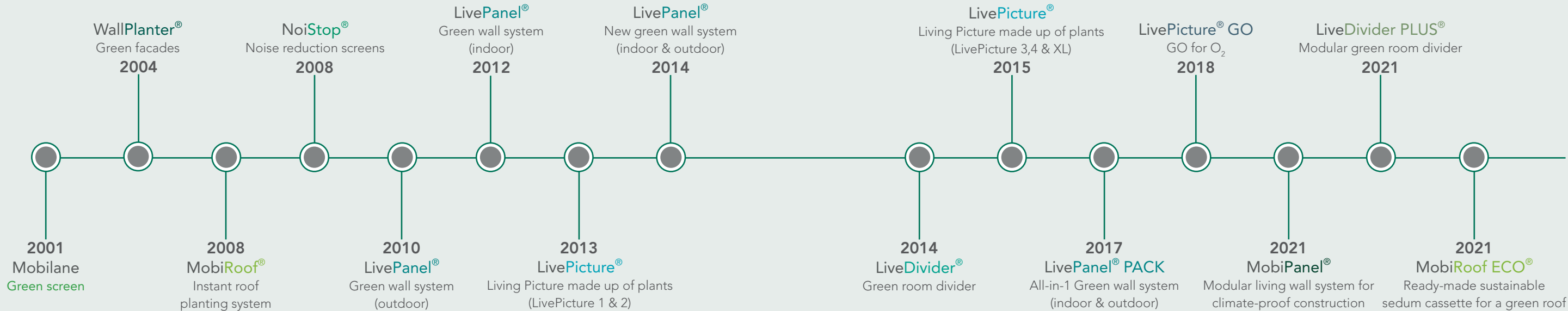
Experience, innovation and passion form the basis for its success, enabling Mobilane to compete the global market. Mobilane has offices in The Netherlands, Germany, Belgium, Hungary, South Africa, Hong Kong and the United States. In collaboration with agents and dealers across more than 35 countries, Mobilane LiveProducts are available and accessible for everyone worldwide.

MOBILANE OFFICES WORLDWIDE

- The Netherlands
- Belgium
- Great Britain
- Germany
- South Africa
- Hong Kong
- United States
- Spain
- Argentina



PRODUCT DEVELOPMENT





WE CARE

It's all about creating a better world. And that's why we include Corporate Social Responsibility (CSR) goals into our strategies, plans and processes.

GREEN ENERGY

We work with different climate zones in our greenhouses. This way, we don't waste energy. The climate zone we use for the young plants is heated with a mix of renewable energy sources. To do this, we partner with NEXTgarden, a neighbouring collective energy garden. Together we are committed to creating a climate-neutral horticultural production area. All great initiatives, from harnessing wind and solar energy, to energy storage and the connection of our nursery to this sustainable heat network.

CIRCULAR WATER SYSTEM

To water our plants, we use harvested rainwater from a pond on the nursery. We use this water for our closed cultivation system. Excess water not absorbed by the plants during irrigation is collected and reused. This collected water is cleaned by a UV filter to prevent the spread of potential bacteria and disease and is stored in our outdoor reservoir. This way, we do not waste water and continue to reduce our water footprint.

NATURAL PESTICIDES

In our glasshouses, we use biological control. This means that any harmful pests are combatted by their natural enemies. The controls we use have been fully tested for safety and effectiveness and do not harm the environment.

A SOCIAL WORKPLACE

One of our goals is to manage our business with a social conscience. Our production nursery provides employment locally to over 200 colleagues, giving each of them regular and rewarding work in their local community.

BIODIVERSITY

The world thrives and survives with an enriched biodiversity. All our outdoor products make a positive contribution to the biodiversity in their vicinity in which they are installed. Plant varieties and ecosystems ensure a better quality of air with the production of oxygen, encouraging pollination of plants, helping filter clean water, enriching fertile soil and maintaining a stable climate.

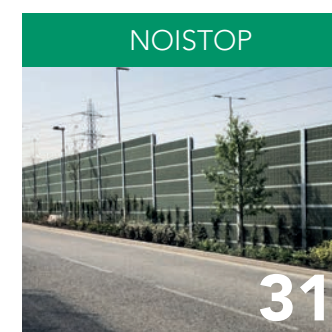
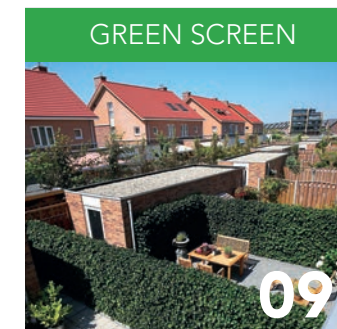




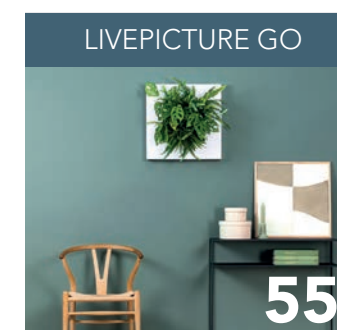
BUILDING GREEN

INDEX

OUTDOOR PRODUCTS



INDOOR PRODUCTS



OUTDOOR PRODUCTS





Mobilane[®] Green Screen

Privacy is important for many people. When planting a green hedge as divider, several years patience is needed until the hedge offers the densest cover. Mobilane's Green Screen eliminates the wait as individual panels can be installed for an instant, densely planted hedge that looks like it has been established for many years!

BIODEGRADABLE POT

This patented Mobilane system comprises a metal grid that is entirely covered with vegetation. These plants are planted in compost in a biodegradable pot, which is attached to the bottom of the metal grid. The biodegradable pot is made from coconut fibres held together by natural latex. After planting the Green Screen, the entirely organic planter degrades within one to two years and the plants will root in the surrounding subsoil.

Green Screens can be planted throughout the year, except during frost periods. The hedges may be attached to either iron or wooden posts using specially designed brackets. Not everyone wants the same hedge, which is why Mobilane supply different types. This helps create variation with different types of plants, colours and heights.

As the Green Screen comes in different versions, it can be used as divider in various ways, including creating garden rooms, separating patios, swimming pools or car ports. Green Screens can disguise bins and refuse areas. A Green Screen also looks great in a wooden container on balconies. In short, the possibilities are endless. There are even hedges of 220 cm and 300 cm high to offer even greater privacy.

GREEN SCREEN BENEFITS

- Instant privacy and greenery result
- Easy and fast to install
- Contributes to biodiversity
- Contributes to a healthy environment
- Improves air quality
- Reduces fine dust with 40 - 60%
- Contributes to the greening of urban areas

UNIQUE FEATURES

- Fully grown
- Available in different heights and types
- Certified sustainable production
- Can be planted throughout the year, except during frost periods
- Biodegradable pot made of coconut fibres
- Environmentally friendly
- High-quality fencing with 10 - year guarantee



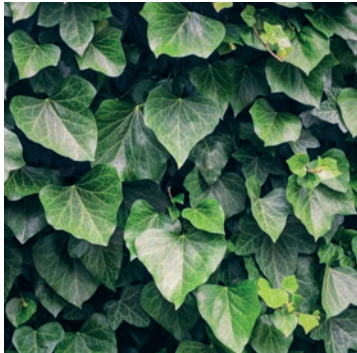
Instant Green Screen

Easy and fast to install

MOBILANE GREEN SCREEN SPECIFICATIONS

Product	Size (w x h)	Accessories
Green Screen	120 x 100 cm, 120 x 155 cm, 120 x 180 cm, 120 x 200 cm, 120 x 220 cm, 120 x 300 cm	Iron and softwood posts, brackets, grid extensions, garden doors, wooden planters

RANGE



Hedera helix 'Woerner'



Hedera helix 'Glacier'



Hedera helix 'Goldchild'



Hedera helix 'Green Ripple'



Hedera helix 'White Ripple'



Hedera hibernica



Carpinus betulus



Pyracantha 'Dart's Red'



Euonymus fort 'Dart's Blanket'



Trachelospermum jasminoides



Elaeagnus ebbingei

ADVICE

- The planting trench should be 0.4 m deep. No water should pool and the subsurface drainage must be good.
- In virtually all cases, it is necessary to improve the soil before placing the Green Screen elements. This depends on local ground and site conditions. Soil fertilisation is also required immediately after planting.
- Make sure the rootball is not hindered by obstacles (e.g. pieces of concrete, rubble or other obstructions). A small, restricted rootball can result in plant damage, particularly during extreme heat or frost conditions.
- Make sure there are no underground pipelines, cables, constructions or foundations that can be damaged when digging the site.
- The hedge should not be planted at too great a depth as it can 'drown' if rainwater cannot drain away sufficiently.
- The hedge elements may also not be placed at the highest point as these could dry out if all the rainwater runs off.

