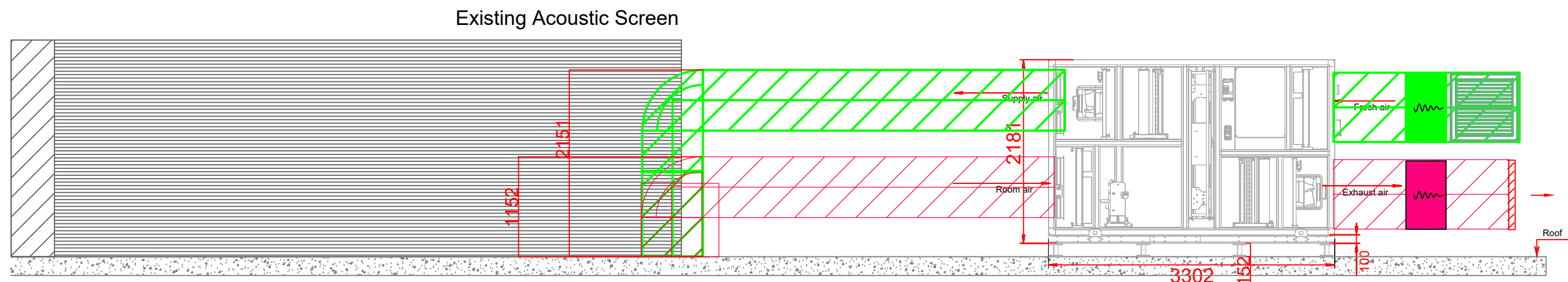


AHU NORTH
max.e3-09
AIR FLOW :3143 L/s (11315 m³/h)

VIEW A
REF: 5231-57-M07
N.T.S.

Elevation A
1:50



AHU SOUTH
max.e3-09
AIR FLOW : 2411 L/s (8680 m³/h)

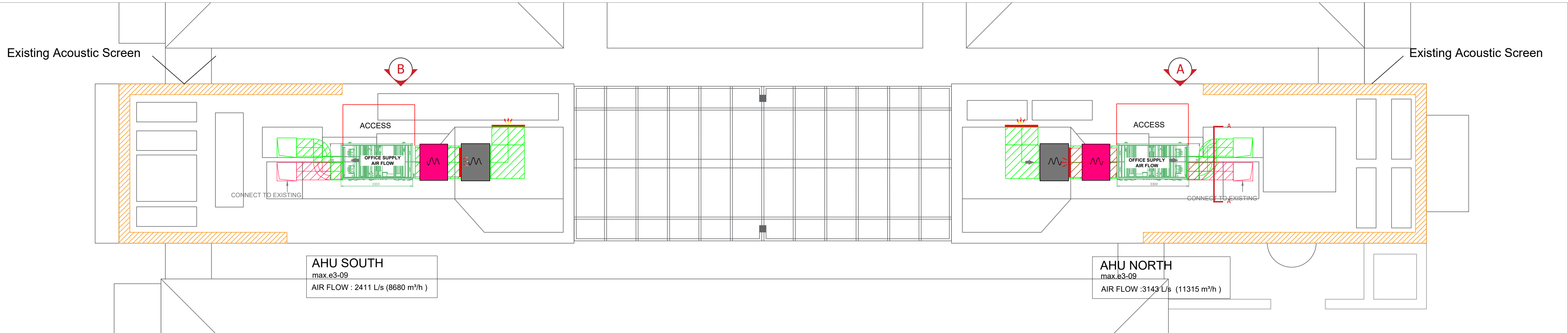
VIEW B
REF: 5231-57-M07
N.T.S.

Elevation B
1:50



Section A-A
1:50

Plan - 1:100



AHU SOUTH
max.e3-09
AIR FLOW : 2411 L/s (8680 m³/h)

AHU NORTH
max.e3-09
AIR FLOW :3143 L/s (11315 m³/h)

- NOTES:
- All dimensions are in millimeters unless stated otherwise.
 - All contractors are to check dimensions on site.
 - Do not scale from this drawing.
 - Check survey under taken only.
 - Subject to local authority approval.
 - This drawing is the property of Space Workplace

©Copyright is reserved and the drawing is issued on the condition that it is not copied, reproduced, retained or disclosed by any unauthorised person, wholly or in part, without the consent in writing of Space Workplace.

HVAC LEGEND

- VAM UNIT - HEAT EXCHANGER
- DUCTED FAN COIL UNIT
- CASSETTE TYPE FCU
- WALL MOUNTED FCU
- CONDENSER UNIT
- BRANCH SELECTOR BOX
- CT - CROSS TALK ATTENUATOR
- REMOTE CONTROLLER
- REFRIGERANT (SUPPLY / RETURN)
- CONDENSATE

Rev	Details	Date
.	.	.

NOTE:
We do not use revisions letters I, O or Q to avoid confusion with numbers 0 & 1 or between the letters O & Q

space
workplace design and build

Client:
MSC Cruises
Drawing:
Proposed Elevations & Section
Property:
5 Roundwood Avenue, Stockley Park, Hayes, Uxbridge, UB11 1AF

Drawing No: **2139_00_E16**

Date created: 09.07.25
Scale: Varies @ A1
Revision: .
Drawn by: DG

Golderbrock House
15-19 Great Titchfield St
London W1W 8AZ
020 7636 0525
www.spaceworkplace.com

Proposed Elevations & Section

1:100
1:50
0m 1m 2m 3m 4m 5m