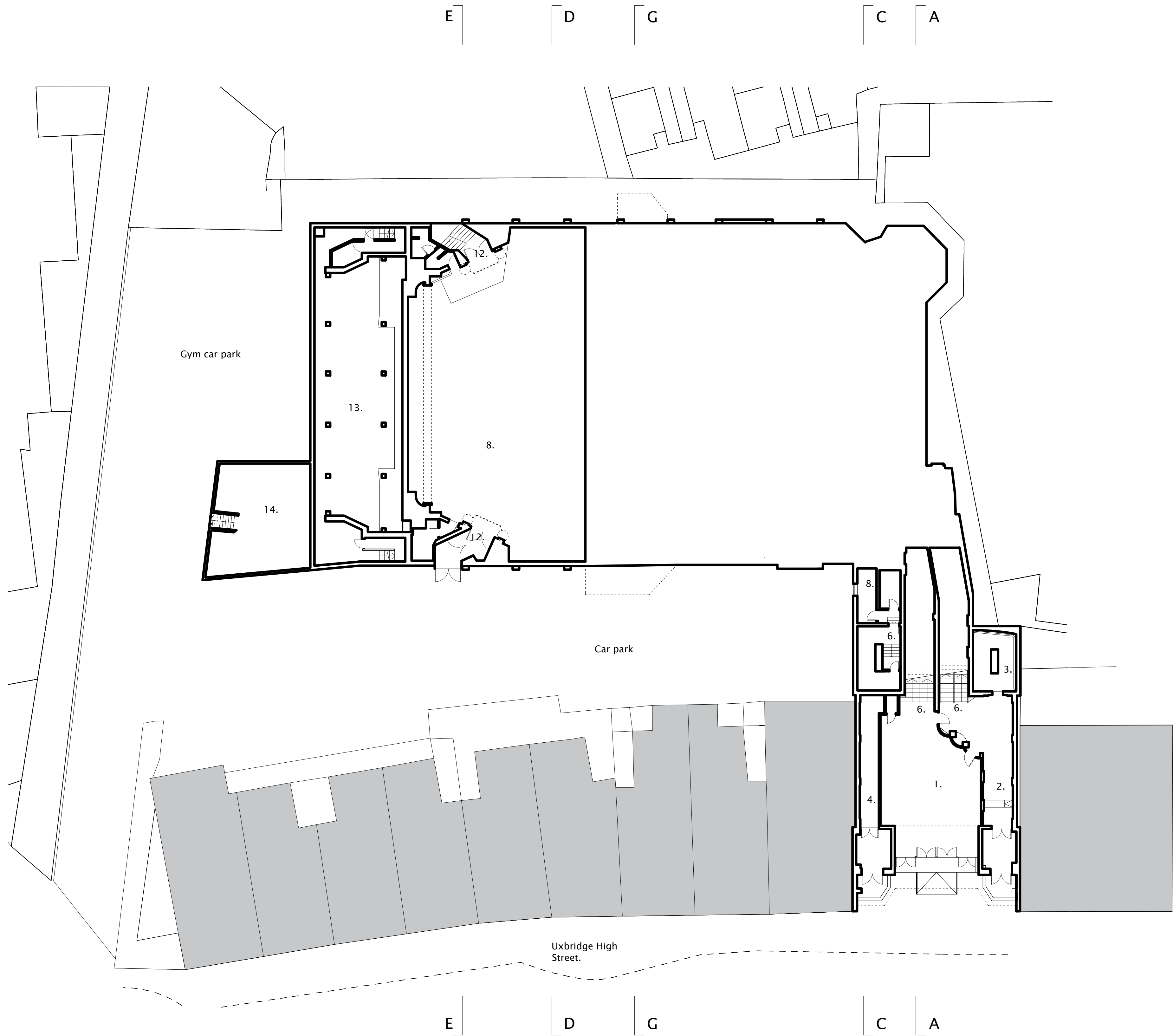


Legend:

- 1. Entrance lobby.
- 2. Coats.
- 3. Pay booth.
- 4. Snooker club entrance.
- 5. Plant room.
- 6. Stairs.
- 7. Sub station.
- 8. Beer cellar.
- 9. Retained bar area post demolition.
- 10. Bar area post demolition.
- 11. Cinema/night club floor post demolition.
- 12. Original exits.
- 13. Gym spaces.
- 14. Old plant room.
- 15. WC and BOH.



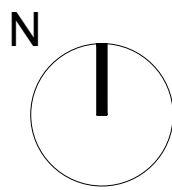
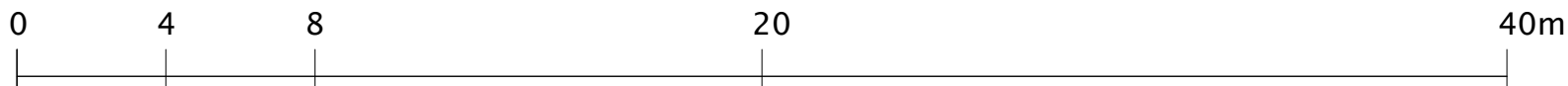
Nick Willson Architects

Second Home
68 Hanbury Street
London
E1 5JL
www.nickwillsonarchitects.com

Notes:

All dimensions to be confirmed by contractor on site.

Scale 1:200



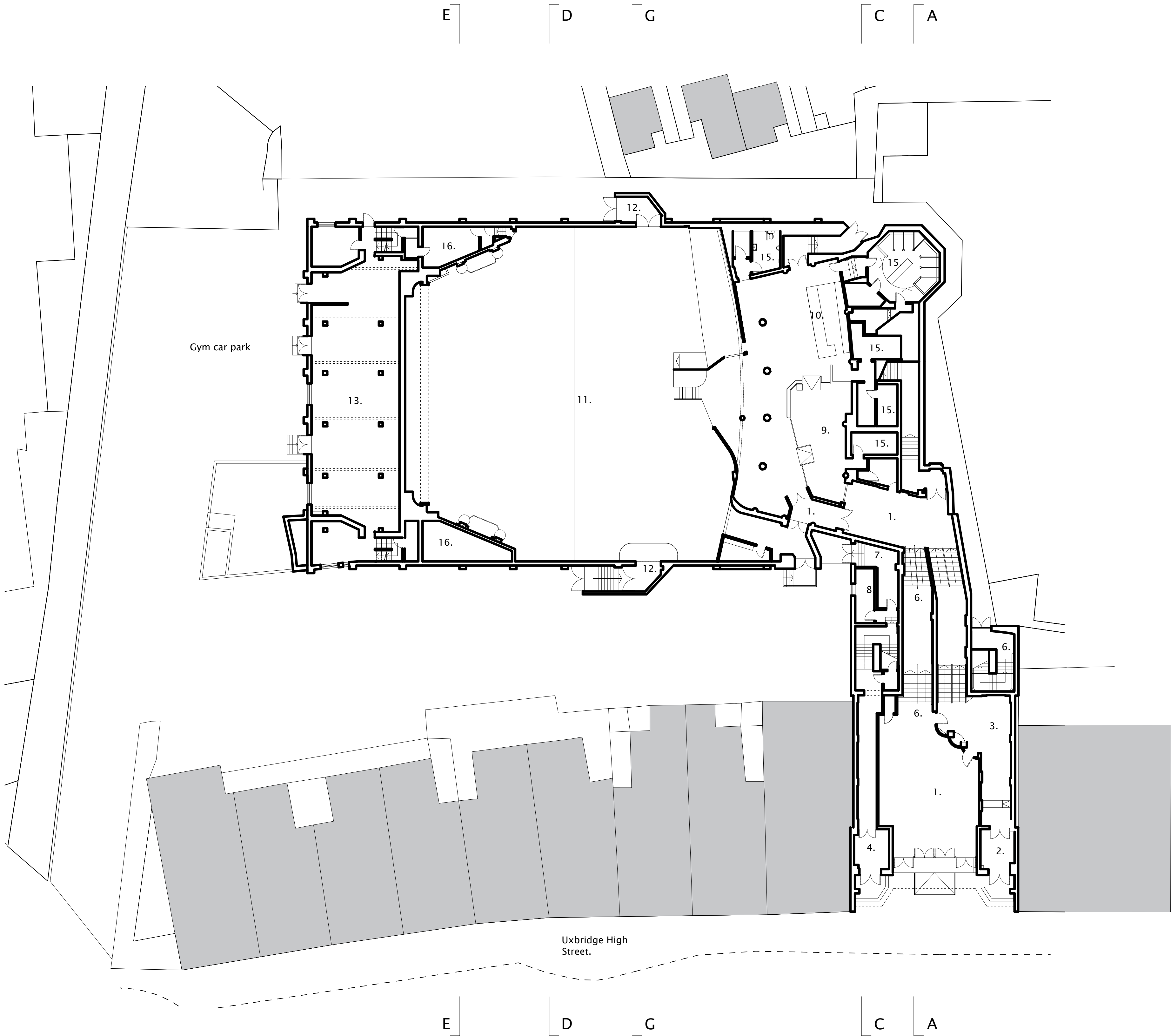
Rev	Date	Description	By	Ck

Project 233 High Street, Uxbridge, London, UB8 1LD	Project description Cinema Conversion	Scale 1:200@A1	Job No 0242
Title Existing Lower Ground Floor Plan	Stage Listed building application	Drawing No A100	Rev —

Legend:

- 1. Entrance lobby.
- 2. Coats.
- 3. Pay booth.
- 4. Snooker club entrance.
- 5. Plant room.
- 6. Stairs.
- 7. Sub station.
- 8. Beer cellar.
- 9. Retained bar area post demolition.
- 10. Bar area post demolition.
- 11. Cinema/night club floor post demolition.
- 12. Original exits.
- 13. Gym spaces.
- 14. Old plant room.
- 15. WC and BOH.
- 16. Music rooms/storage.

B
F



B
F

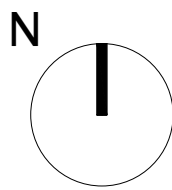
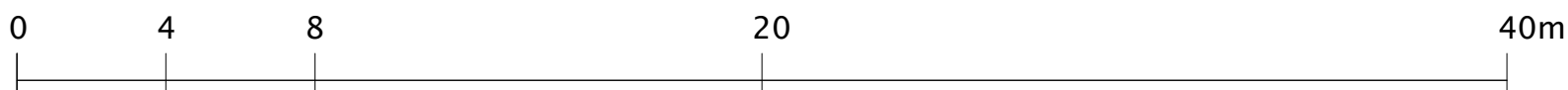
Nick Willson Architects

Second Home
68 Hanbury Street
London
E1 5JL
www.nickwillsonarchitects.com

Notes:

All dimensions to be confirmed by contractor on site.

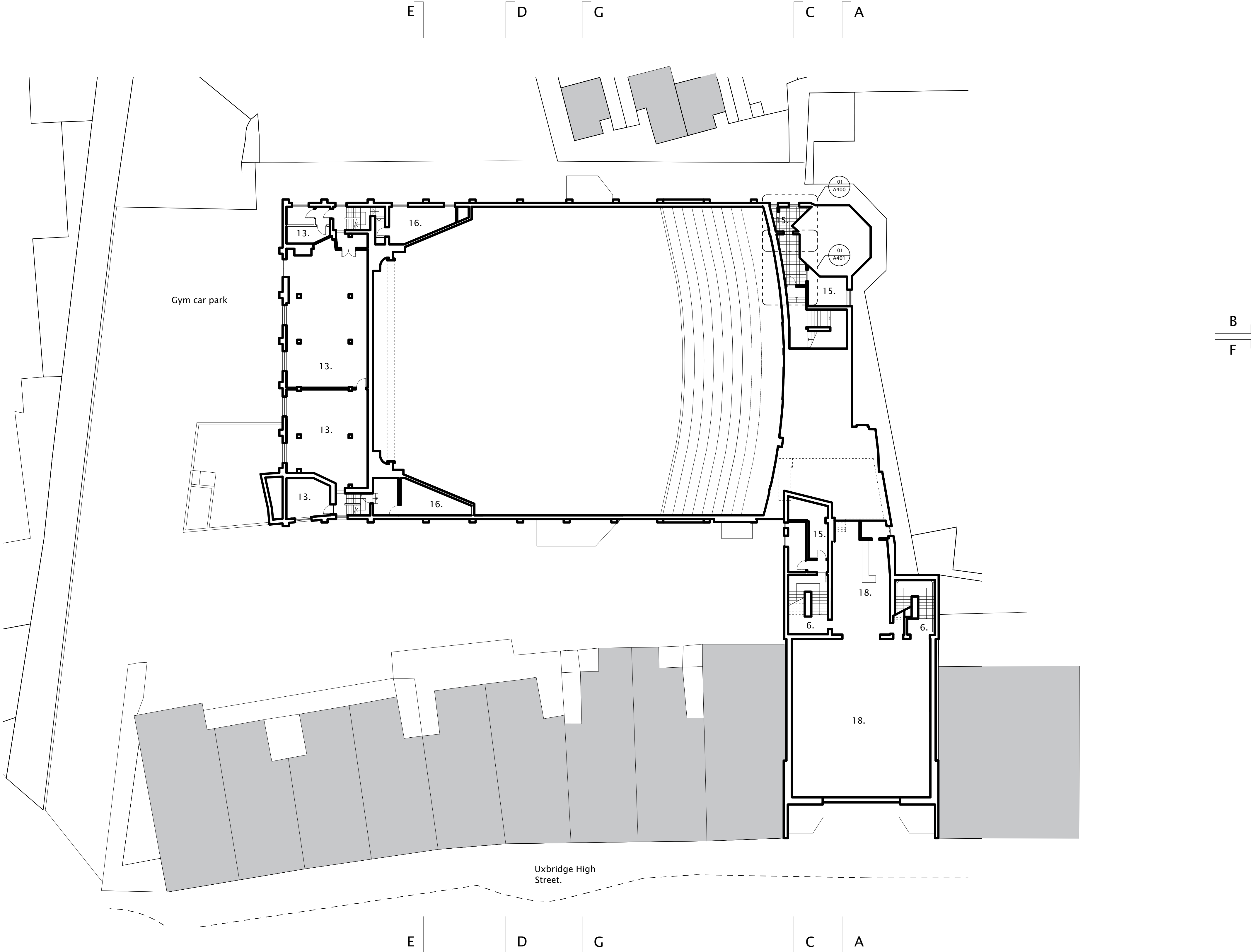
Scale 1:200



Rev	Date	Description	By	Ck

Project 233 High Street, Uxbridge, London, UB8 1LD	Project description Cinema Conversion	Scale 1:200@A1	Job No 0242
Title Existing Ground Floor Plan	Stage Listed building application	Drawing No A101	Rev —

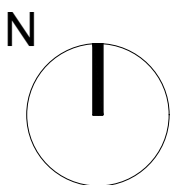
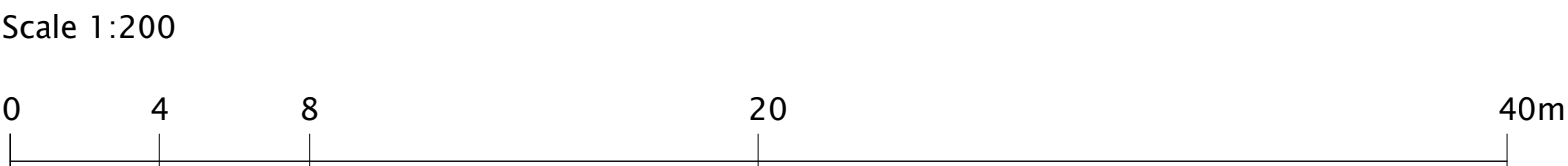
- Legend:
- 1. Entrance lobby.
 - 2. Coats.
 - 3. Pay booth.
 - 4. Snooker club entrance.
 - 5. Plant room.
 - 6. Stairs.
 - 7. Sub station.
 - 8. Beer cellar.
 - 9. Retained bar area post demolition.
 - 10. Bar area post demolition.
 - 11. Cinema/night club floor post demolition.
 - 12. Original exits.
 - 13. Gym spaces.
 - 14. Old plant room.
 - 15. WC and BOH.
 - 16. Music rooms.
 - 17. Part demolished mezzanine.
 - 18. Snooker halls.



Nick Willson Architects

Second Home
68 Hanbury Street
London
E1 5JL
www.nickwillsonarchitects.com

Notes:
All dimensions to be confirmed by contractor on site.



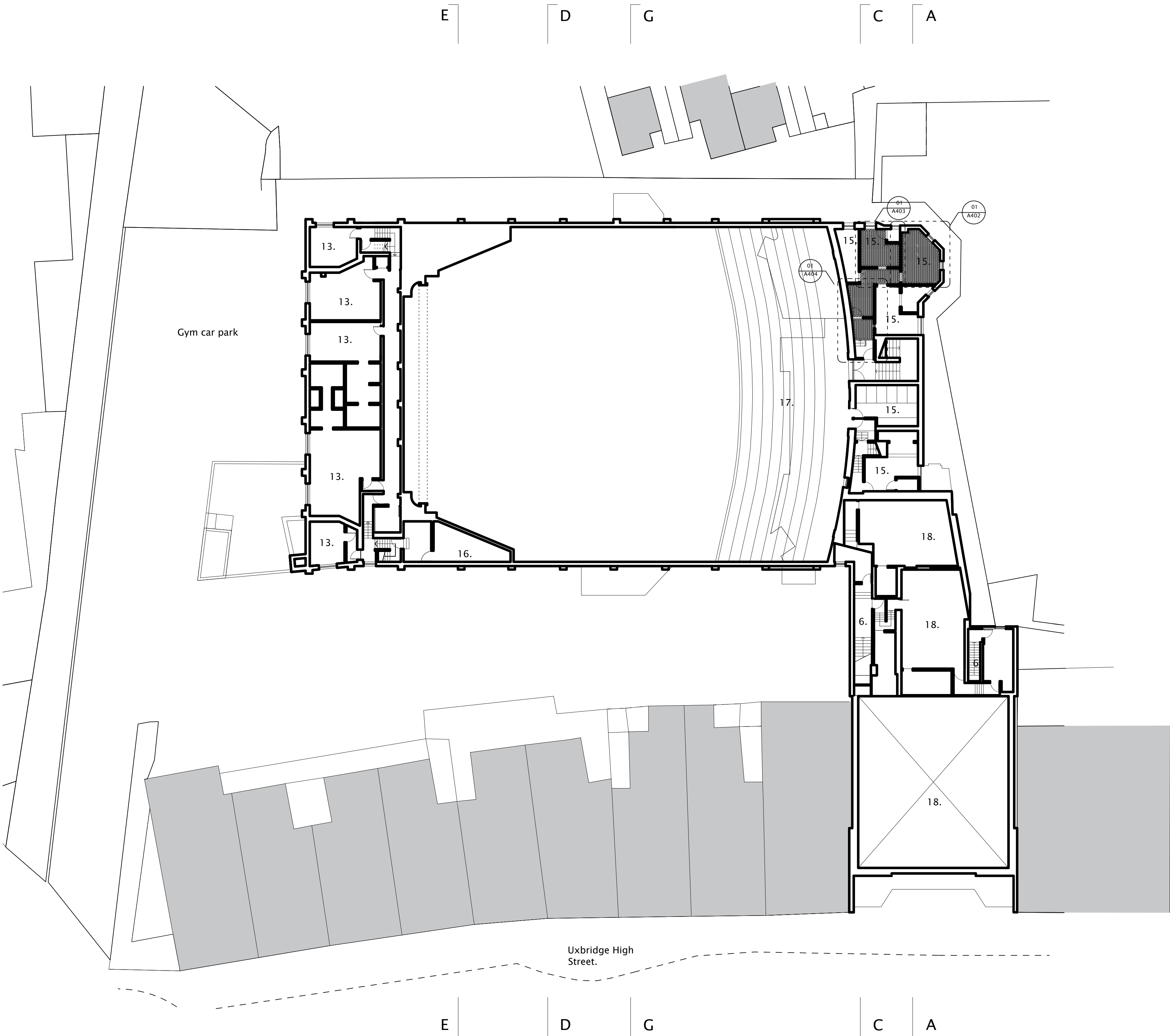
Rev	Date	Description	By	Ck

Project 233 High Street, Uxbridge, London, UB8 1LD	Project description Cinema Conversion	Scale 1:200@A1	Job No 0242
Title Existing 1st Floor Plan	Stage Listed building application	Drawing No A102	Rev -

Legend:

- 1. Entrance lobby.
- 2. Coats.
- 3. Pay booth.
- 4. Snooker club entrance.
- 5. Plant room.
- 6. Stairs.
- 7. Sub station.
- 8. Beer cellar.
- 9. Retained bar area post demolition.
- 10. Bar area post demolition.
- 11. Cinema/night club floor post demolition.
- 12. Original exits.
- 13. Gym spaces.
- 14. Old plant room.
- 15. WC and BOH.
- 16. Music rooms.
- 17. Part demolished mezzanine.
- 18. Snooker halls.

B
F



B
F

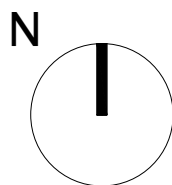
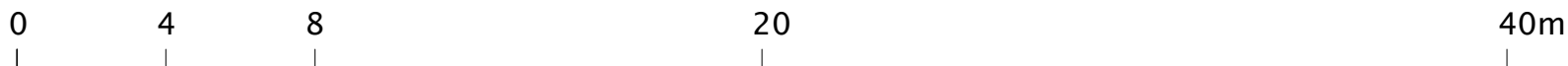
Nick Willson Architects

Second Home
68 Hanbury Street
London
E1 5JL
www.nickwillsonarchitects.com

Notes:

All dimensions to be confirmed by contractor on site.

Scale 1:200



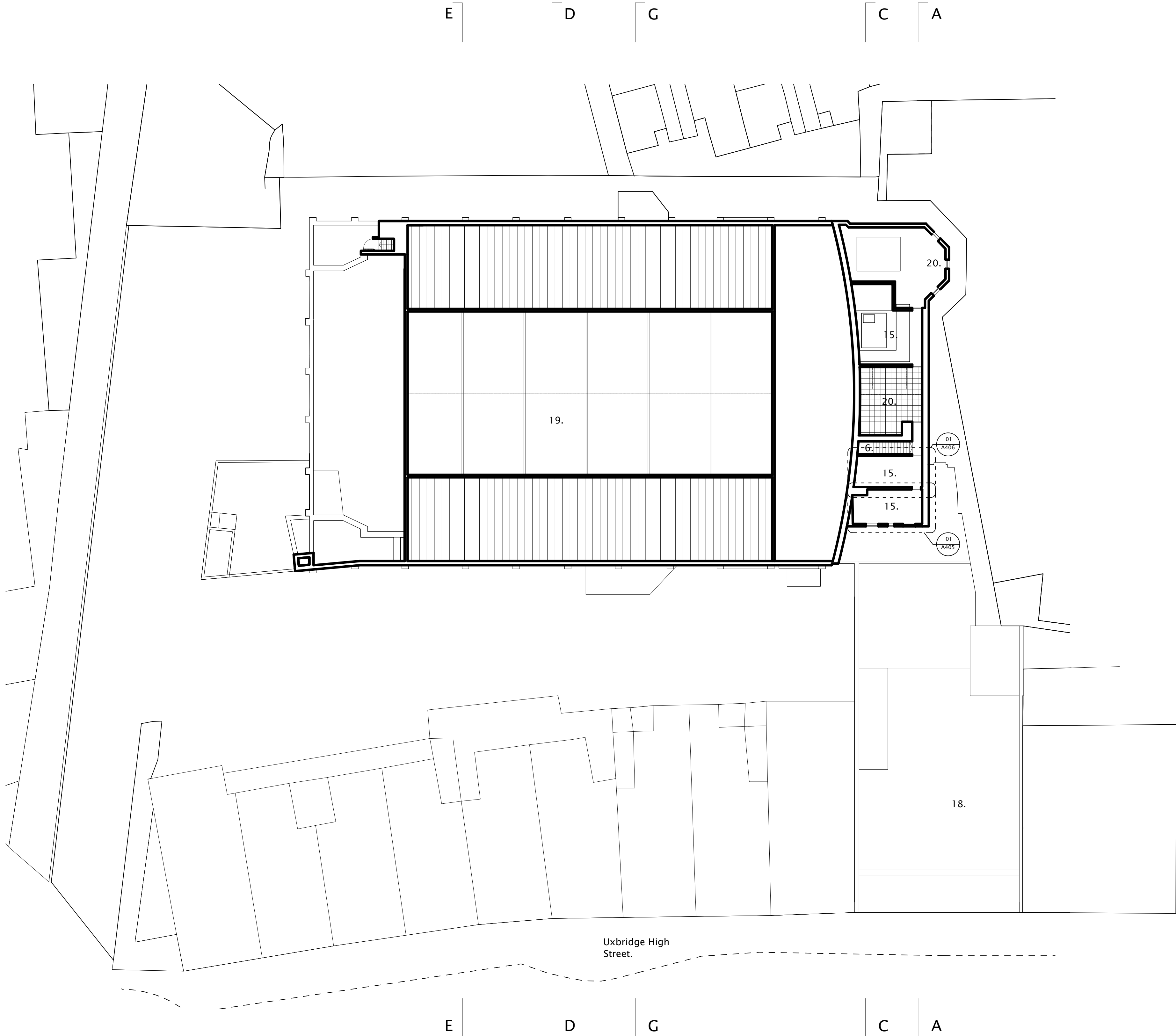
Rev	Date	Description	By	Ck

Project 233 High Street, Uxbridge, London, UB8 1LD	Project description Cinema Conversion	Scale 1:200@A1	Job No 0242
Title Existing 2nd Floor Plan	Stage Listed building application	Drawing No A103	Rev -

Legend:

- 1. Entrance lobby.
- 2. Coats.
- 3. Pay booth.
- 4. Snooker club entrance.
- 5. Plant room.
- 6. Stairs.
- 7. Sub station.
- 8. Beer cellar.
- 9. Retained bar area post demolition.
- 10. Bar area post demolition.
- 11. Cinema/night club floor post demolition.
- 12. Original exits.
- 13. Gym spaces.
- 14. Old plant room.
- 15. WC and BOH.
- 16. Music rooms.
- 17. Part demolished mezzanine.
- 18. Snooker halls.
- 19. Roof void and access to cinema ceiling.
- 20. Roof terrace.

B
F



B
F

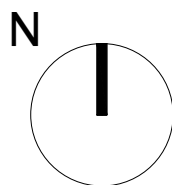
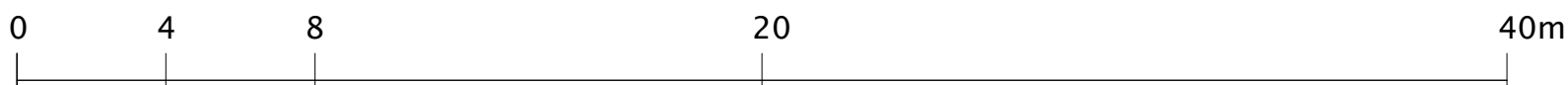
Nick Willson Architects

Second Home
68 Hanbury Street
London
E1 5JL
www.nickwillsonarchitects.com

Notes:

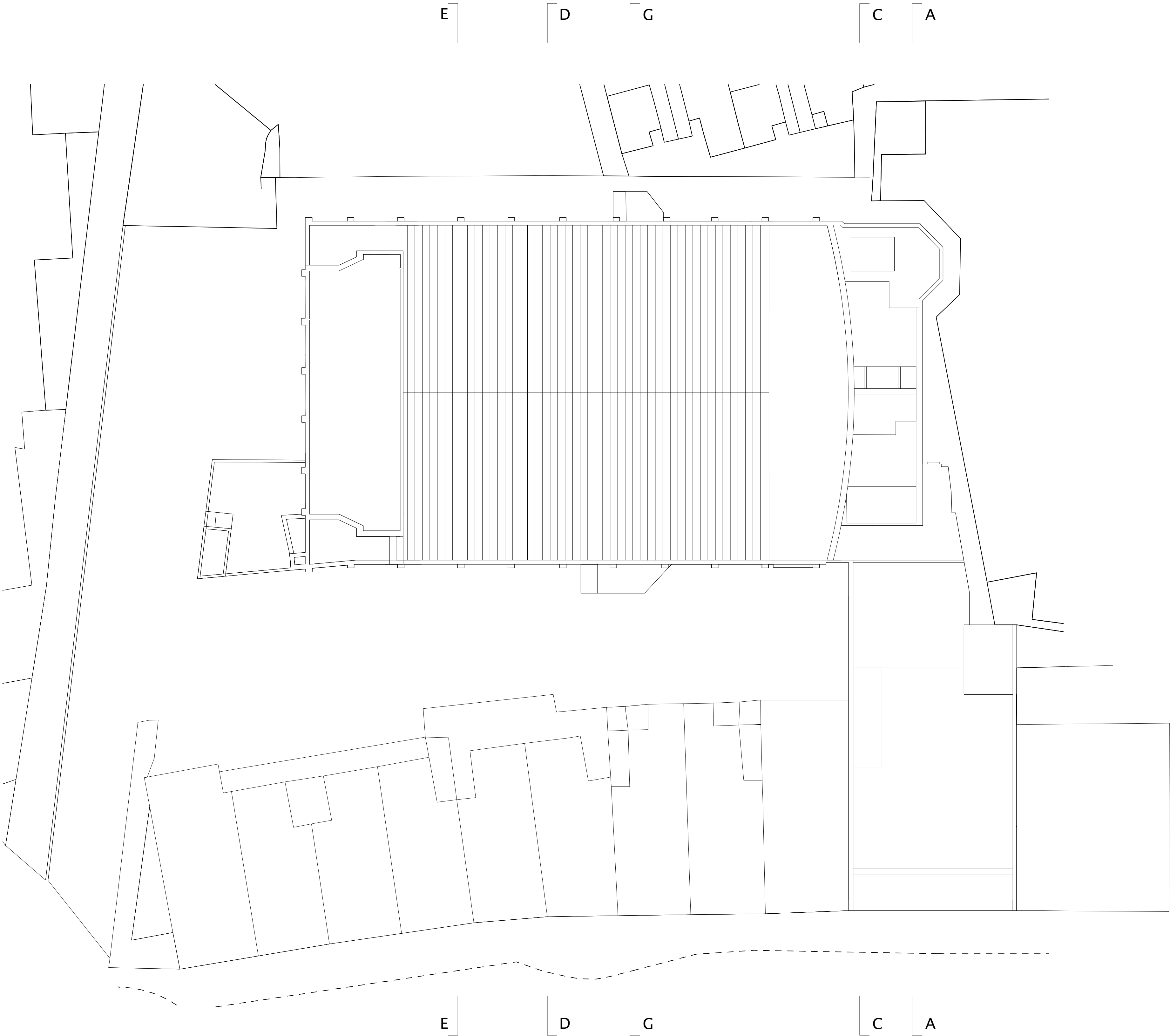
All dimensions to be confirmed by contractor on site.

Scale 1:200



Rev	Date	Description	By	Ck

Project 233 High Street, Uxbridge, London, UB8 1LD	Project description Cinema Conversion	Scale 1:200@A1	Job No 0242
Title Existing Third floor Plan	Stage Listed building application	Drawing No A104	Rev -



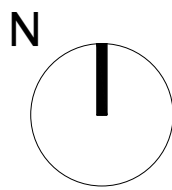
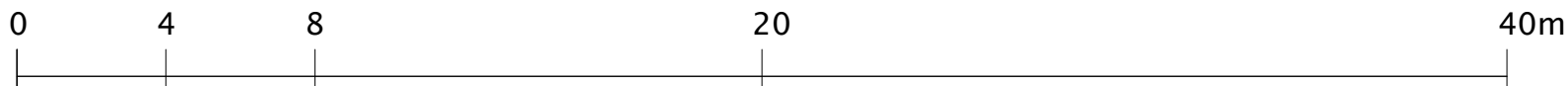
Nick Willson Architects

Second Home
68 Hanbury Street
London
E1 5JL
www.nickwillsonarchitects.com

Notes:

All dimensions to be confirmed by contractor on site.

Scale 1:200

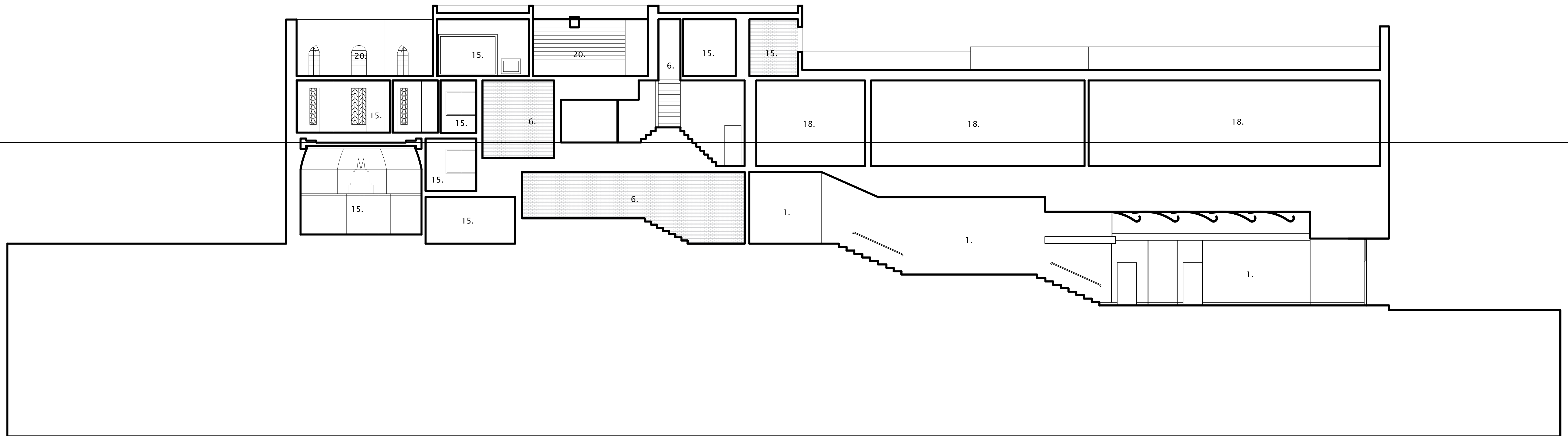


Rev	Date	Description	By	Ck

Project 233 High Street, Uxbridge, London, UB8 1LD	Project description Cinema Conversion	Scale 1:200@A1	Job No 0242
Title Existing Roof plan	Stage Listed building application	Drawing No A105	Rev -

Legend:

1. Entrance lobby.
2. Coats.
3. Pay booth.
4. Snooker club entrance.
5. Plant room.
6. Stairs.
7. Sub station.
8. Beer cellar.
9. Retained bar area post demolition.
10. Bar area post demolition.
11. Cinema/night club floor post demolition.
12. Original exits.
13. Gym spaces.
14. Old plant room.
15. WC and BOH.
16. Music rooms.
17. Part demolished mezzanine.
18. Snooker halls.
19. Roof void and access to cinema ceiling.
20. Roof terrace.

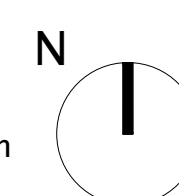


Second Home
68 Hanbury Street
London
E1 5JL
www.nickwillsonarchitects.com

Notes:

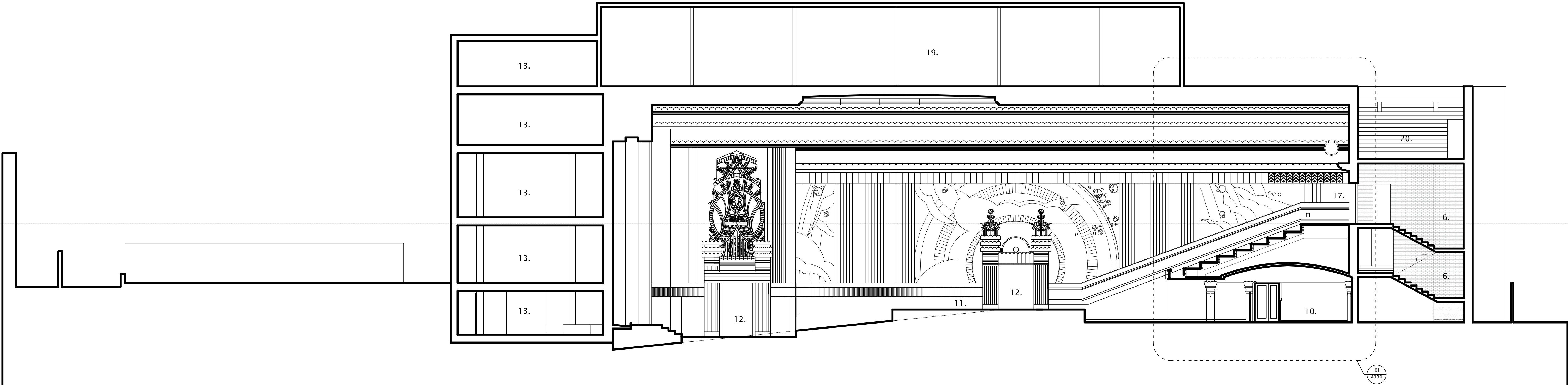
All dimensions to be confirmed by contractor on site.

Scale 1:200

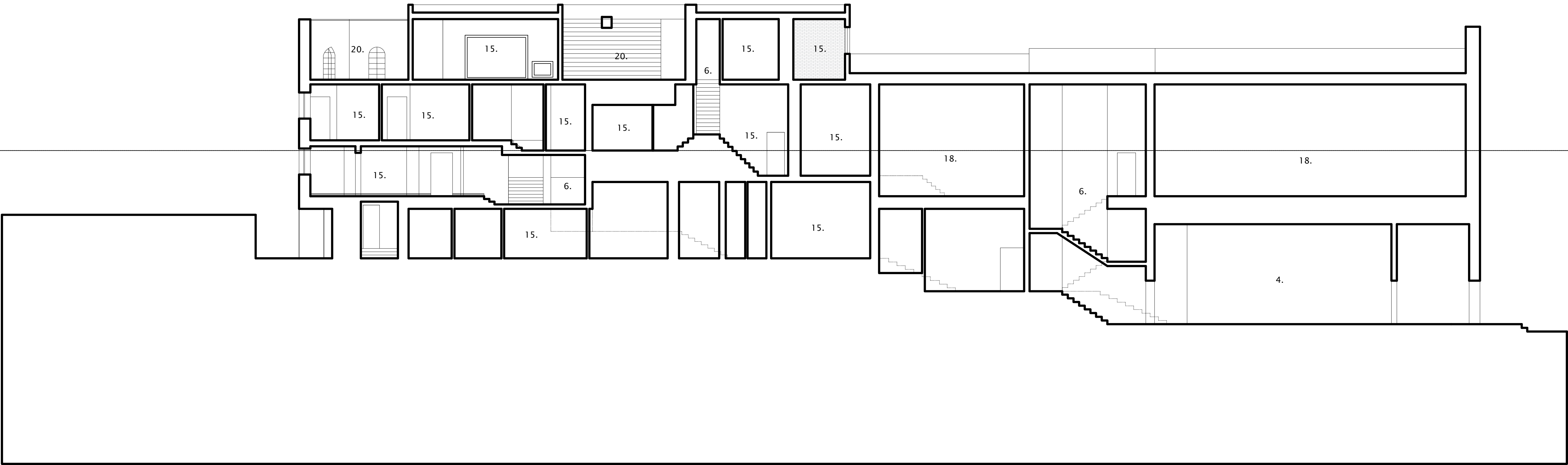


					<div>Project</div> <div>233 High Street, Uxbridge, London, UB8 1LD</div>	<div>Project description</div> <div>Cinema Conversion</div>	<div>Scale</div> <div>1:100@A1</div>	<div>Job No</div> <div>0242</div>
					<div>Title</div> <div>Existing Section AA</div>	<div>Stage</div> <div>Listed building application</div>	<div>Drawing No</div> <div>A120</div>	<div>Rev</div> <div>—</div>
Rev	Date	Description	Bv	Ck				

- Legend:
- 1. Entrance lobby.
 - 2. Coats.
 - 3. Pay booth.
 - 4. Snooker club entrance.
 - 5. Plant room.
 - 6. Stairs.
 - 7. Sub station.
 - 8. Beer cellar.
 - 9. Retained bar area post demolition.
 - 10. Bar area post demolition.
 - 11. Cinema/night club floor post demolition.
 - 12. Original exits.
 - 13. Gym spaces.
 - 14. Old plant room.
 - 15. WC and BOH.
 - 16. Music rooms.
 - 17. Part demolished mezzanine.
 - 18. Snooker halls.
 - 19. Roof void and access to cinema ceiling.
 - 20. Roof terrace.



- Legend:
- 1. Entrance lobby.
 - 2. Coats.
 - 3. Pay booth.
 - 4. Snooker club entrance.
 - 5. Plant room.
 - 6. Stairs.
 - 7. Sub station.
 - 8. Beer cellar.
 - 9. Retained bar area post demolition.
 - 10. Bar area post demolition.
 - 11. Cinema/night club floor post demolition.
 - 12. Original exits.
 - 13. Gym spaces.
 - 14. Old plant room.
 - 15. WC and BOH.
 - 16. Music rooms.
 - 17. Part demolished mezzanine.
 - 18. Snooker halls.
 - 19. Roof void and access to cinema ceiling.
 - 20. Roof terrace.

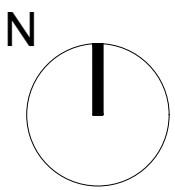
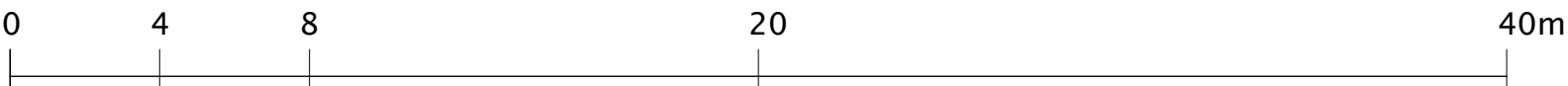


Nick Willson Architects

Second Home
68 Hanbury Street
London
E1 5JL
www.nickwillsonarchitects.com

Notes:
All dimensions to be confirmed by contractor on site.

Scale 1:200

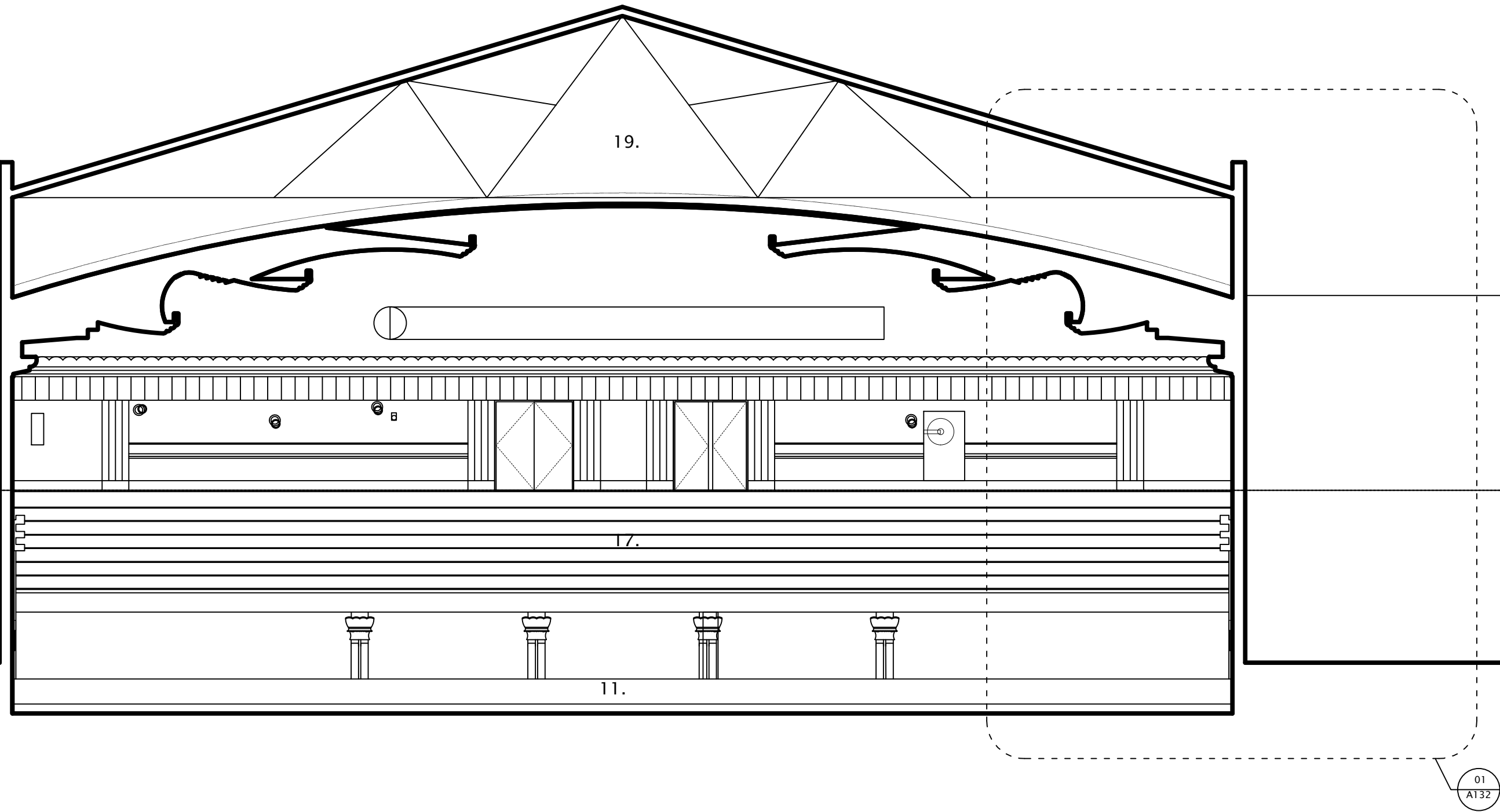


Rev	Date	Description	By	Ck

Project 233 High Street, Uxbridge, London, UB8 1LD	Project description Cinema Conversion	Scale 1:100@A1	Job No 0242
Title Existing Section CC	Stage Listed building application	Drawing No A122	Rev —

Legend:

- 1. Entrance lobby.
- 2. Coats.
- 3. Pay booth.
- 4. Snooker club entrance.
- 5. Plant room.
- 6. Stairs.
- 7. Sub station.
- 8. Beer cellar.
- 9. Retained bar area post demolition.
- 10. Bar area post demolition.
- 11. Cinema/night club floor post demolition.
- 12. Original exits.
- 13. Gym spaces.
- 14. Old plant room.
- 15. WC and BOH.
- 16. Music rooms.
- 17. Part demolished mezzanine.
- 18. Snooker halls.
- 19. Roof void and access to cinema ceiling.
- 20. Roof terrace.



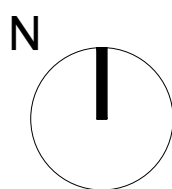
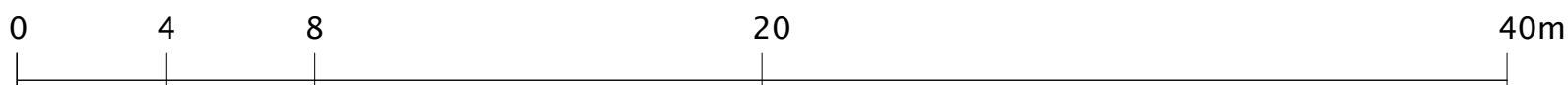
Nick Willson Architects

Second Home
68 Hanbury Street
London
E1 5JL
www.nickwillsonarchitects.com

Notes:

All dimensions to be confirmed by contractor on site.

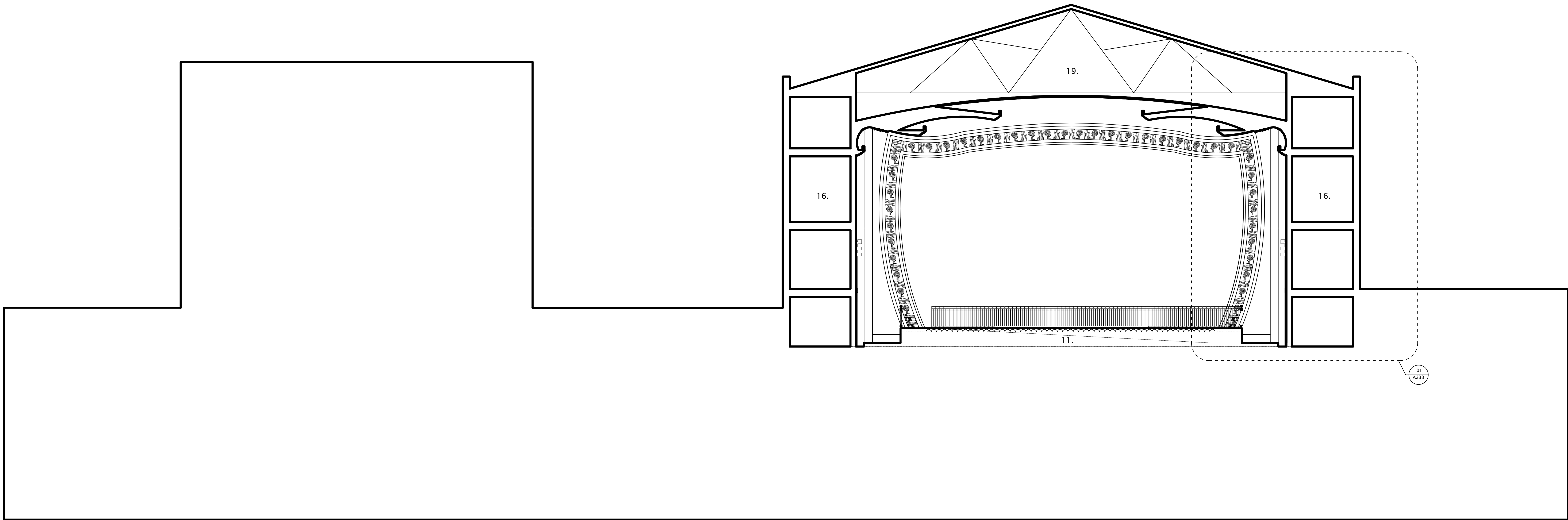
Scale 1:200



Rev	Date	Description	By	Ck

Project 233 High Street, Uxbridge, London, UB8 1LD	Project description Cinema Conversion	Scale 1:100@A1	Job No 0242
Title Existing Section DD	Stage Listed building application	Drawing No A123	Rev —

- Legend:
- 1. Entrance lobby.
 - 2. Coats.
 - 3. Pay booth.
 - 4. Snooker club entrance.
 - 5. Plant room.
 - 6. Stairs.
 - 7. Sub station.
 - 8. Beer cellar.
 - 9. Retained bar area post demolition.
 - 10. Bar area post demolition.
 - 11. Cinema/night club floor post demolition.
 - 12. Original exits.
 - 13. Gym spaces.
 - 14. Old plant room.
 - 15. WC and BOH.
 - 16. Music rooms.
 - 17. Part demolished mezzanine.
 - 18. Snooker halls.
 - 19. Roof void and access to cinema ceiling.
 - 20. Roof terrace.

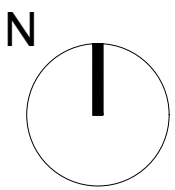
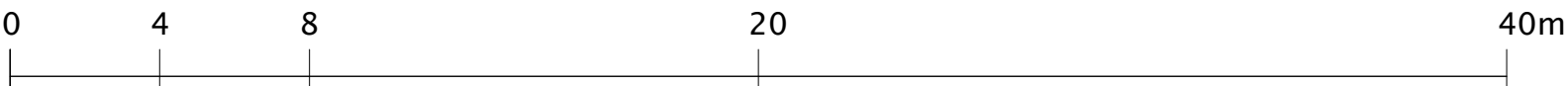


Nick Willson Architects

Second Home
68 Hanbury Street
London
E1 5JL
www.nickwillsonarchitects.com

Notes:
All dimensions to be confirmed by contractor on site.

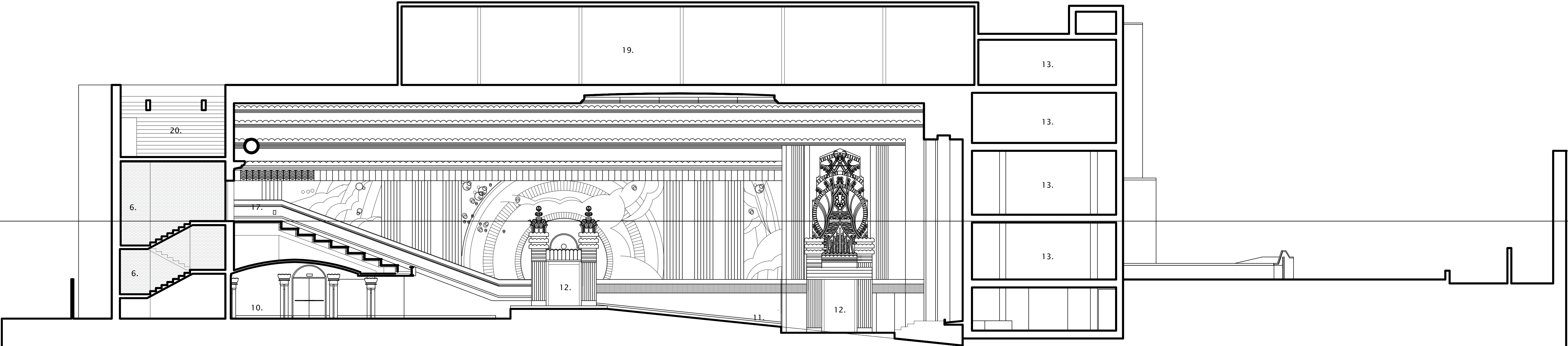
Scale 1:200



Rev	Date	Description	By	Ck

Project 233 High Street, Uxbridge, London, UB8 1LD	Project description Cinema Conversion	Scale 1:100@A1	Job No 0242
Title Proposed Section EE	Stage Listed building application	Drawing No A224	Rev —

- Legend:
- 1. Entrance lobby.
 - 2. Coats.
 - 3. Pay booth.
 - 4. Snooker club entrance.
 - 5. Plant room.
 - 6. Stairs.
 - 7. Sub station.
 - 8. Beer cellar.
 - 9. Retained bar area post demolition.
 - 10. Bar area post demolition.
 - 11. Cinema/night club floor post demolition.
 - 12. Original exits.
 - 13. Gym spaces.
 - 14. Old plant room.
 - 15. WC and BOH.
 - 16. Music rooms.
 - 17. Part demolished mezzanine.
 - 18. Snooker halls.
 - 19. Roof void and access to cinema ceiling.
 - 20. Roof terrace.

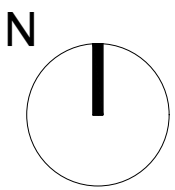
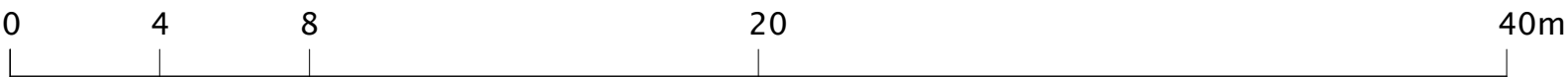


Nick Willson Architects

Second Home
68 Hanbury Street
London
E1 5JL
www.nickwillsonarchitects.com

Notes:
All dimensions to be confirmed by contractor on site.

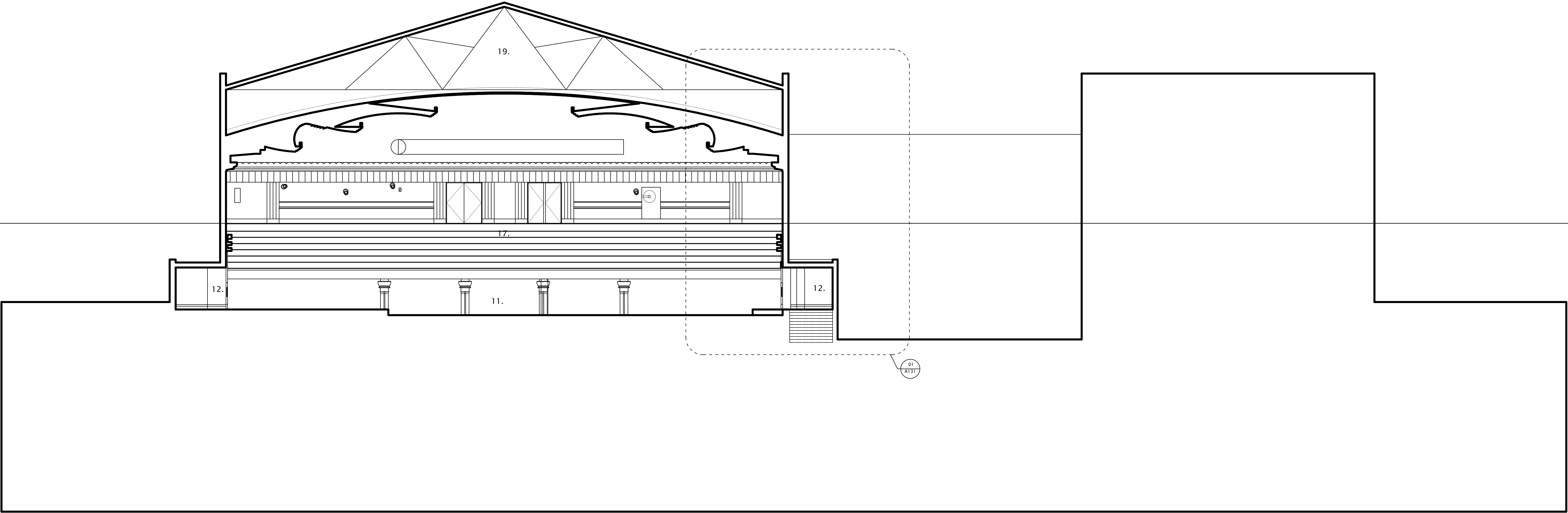
Scale 1:200



Rev	Date	Description	By	Ck

Project 233 High Street, Uxbridge, London, UB8 1LD	Project description Cinema Conversion	Scale 1:100@A1	Job No 0242
Title Existing Section FF	Stage Listed building application	Drawing No A125	Rev -

- Legend:
- 1. Entrance lobby.
 - 2. Coats.
 - 3. Pay booth.
 - 4. Snooker club entrance.
 - 5. Plant room.
 - 6. Stairs.
 - 7. Sub station.
 - 8. Beer cellar.
 - 9. Retained bar area post demolition.
 - 10. Bar area post demolition.
 - 11. Cinema/night club floor post demolition.
 - 12. Original exits.
 - 13. Gym spaces.
 - 14. Old plant room.
 - 15. WC and BOH.
 - 16. Music rooms.
 - 17. Part demolished mezzanine.
 - 18. Snooker halls.
 - 19. Roof void and access to cinema ceiling.
 - 20. Roof terrace.

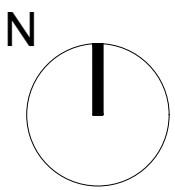
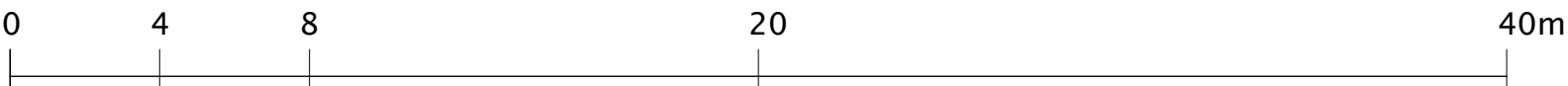


Nick Willson Architects

Second Home
68 Hanbury Street
London
E1 5JL
www.nickwillsonarchitects.com

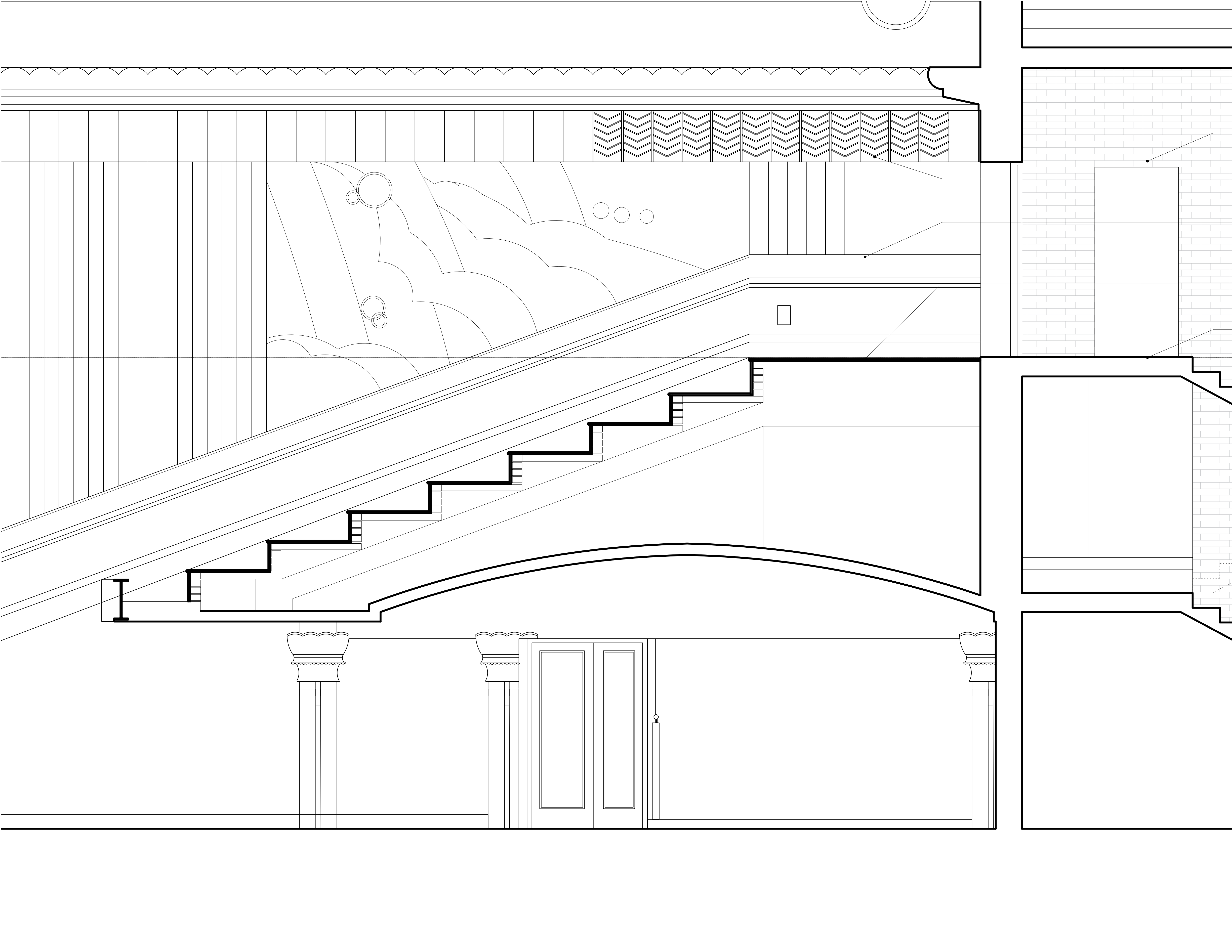
Notes:
All dimensions to be confirmed by contractor on site.

Scale 1:200



Rev	Date	Description	By	Ck

Project 233 High Street, Uxbridge, London, UB8 1LD	Project description Cinema Conversion	Scale 1:100@A1	Job No 0242
Title Existing Section GG	Stage Listed building application	Drawing No A126	Rev -



Existing walls require making good and painting in stairwells.

Existing plaster work, detailing requires repair and replacement by specialists.

Existing plaster work, detailing requires repair and replacement by specialists.

Existing terraced structure retained and protected.

Existing floors require making good and painting in stairwells.

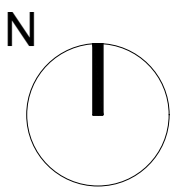
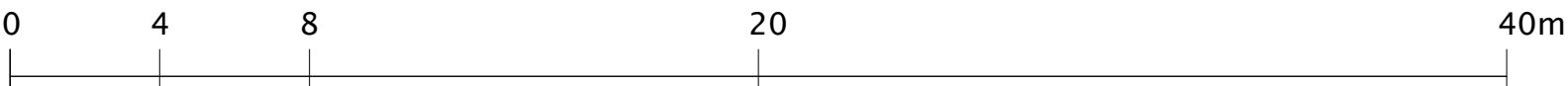
Nick Willson Architects

Second Home
68 Hanbury Street
London
E1 5JL
www.nickwillsonarchitects.com

Notes:

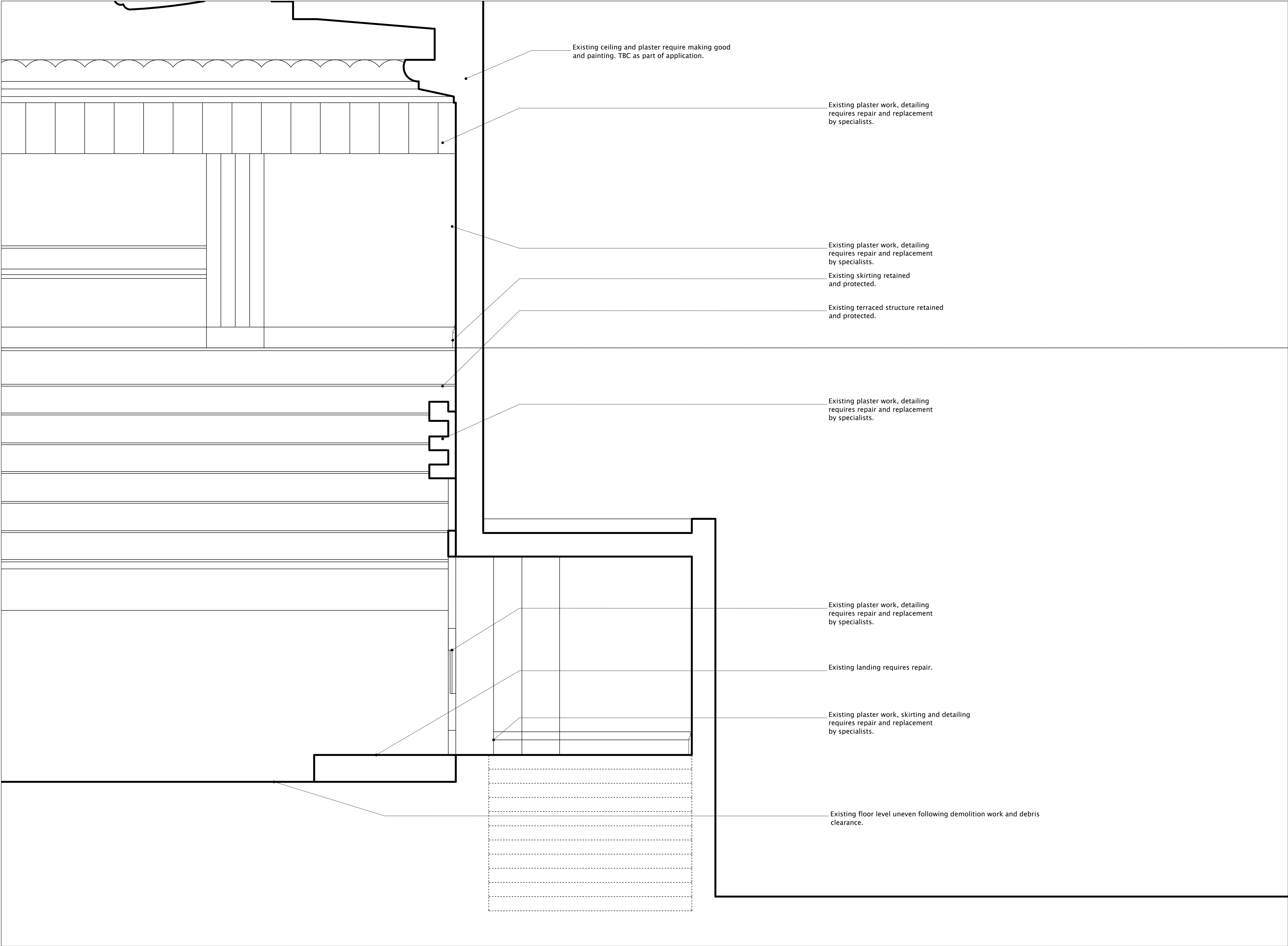
All dimensions to be confirmed by contractor on site.

Scale 1:200



Rev	Date	Description	By	Ck

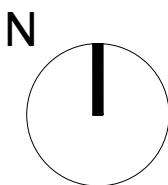
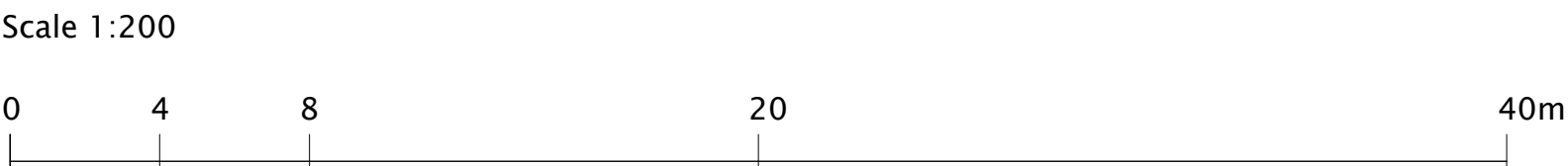
Project 233 High Street, Uxbridge, London, UB8 1LD	Project description Cinema Conversion	Scale 1:20@A1	Job No 0242
Title Existing Section BB Mezzanine detail	Stage Listed building application	Drawing No A130	Rev —



Nick Willson Architects

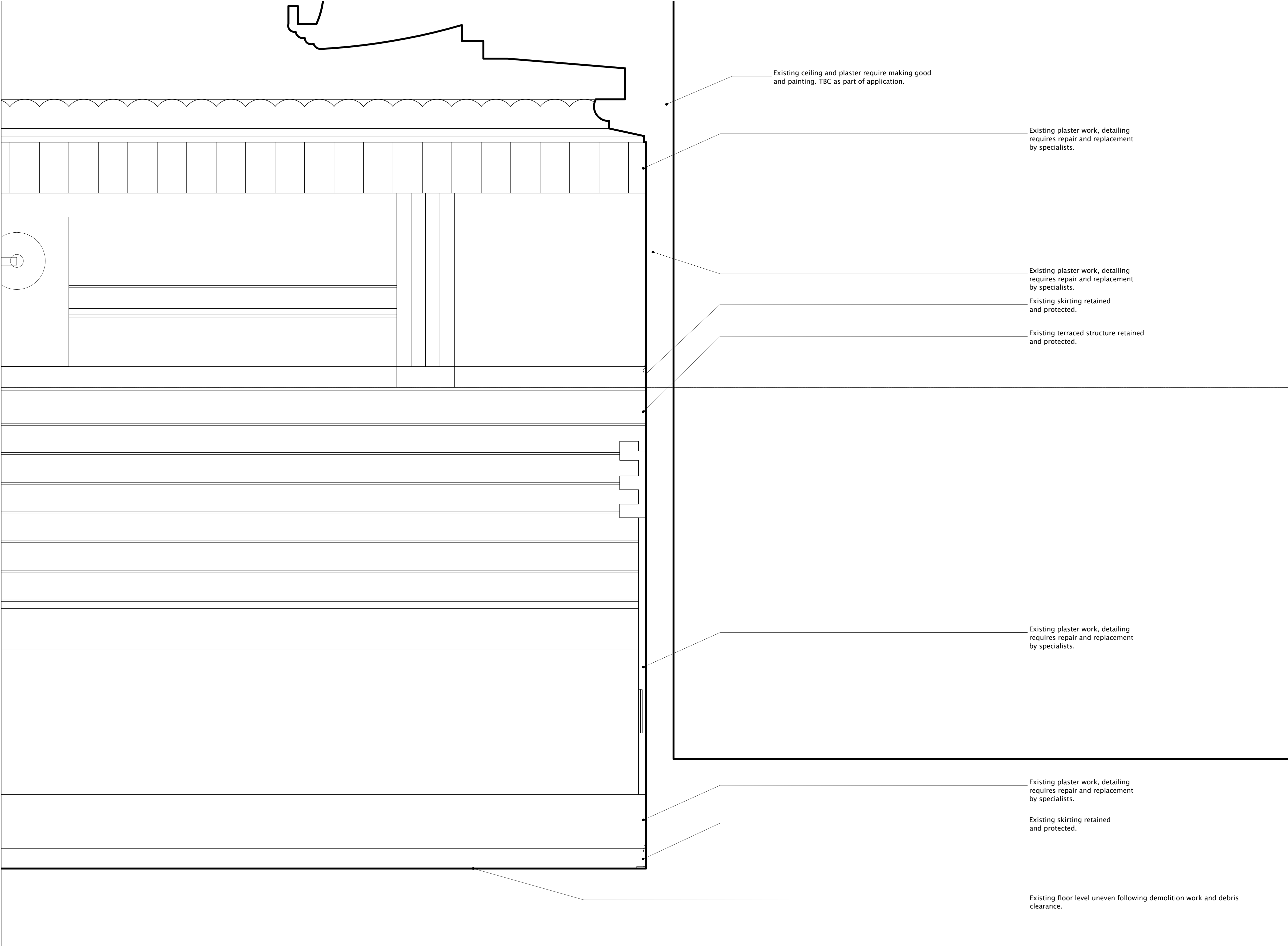
Second Home
68 Hanbury Street
London
E1 5JL
www.nickwillsonarchitects.com

Notes:
All dimensions to be confirmed by contractor on site.



Rev	Date	Description	By	Ck	

Project 233 High Street, Uxbridge, London, UB8 1LD	Project description Cinema Conversion	Scale 1:20@A1	Job No 0242
Title Existing Section GG Entrance detail	Stage Listed building application	Drawing No A131	Rev -

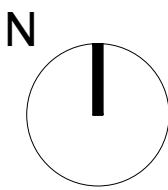
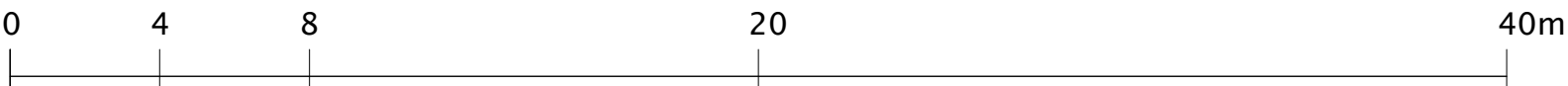


Nick Willson Architects

Second Home
68 Hanbury Street
London
E1 5JL
www.nickwillsonarchitects.com

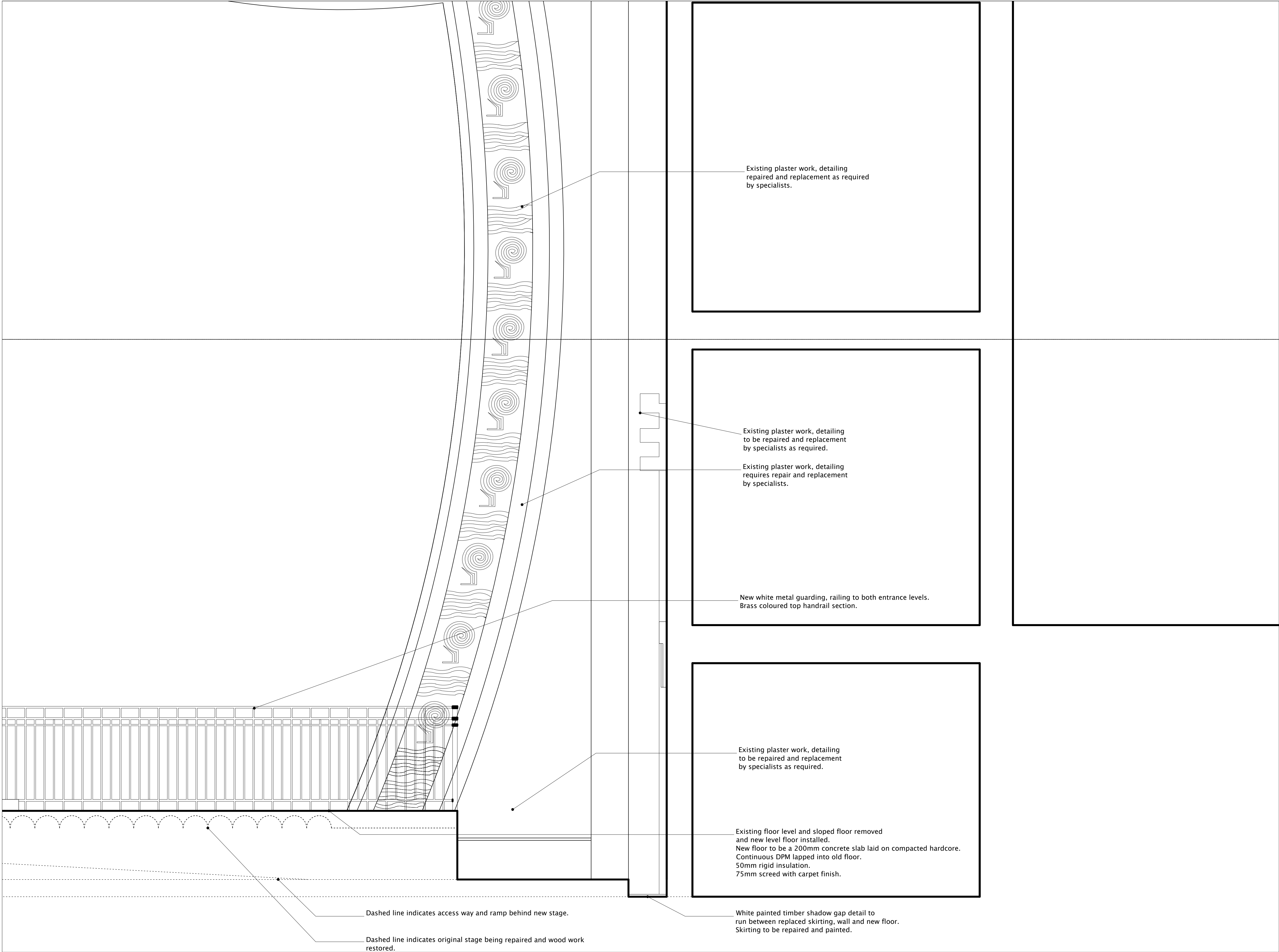
Notes:
All dimensions to be confirmed by contractor on site.

Scale 1:200



Rev	Date	Description	By	Ck	

Project 233 High Street, Uxbridge, London, UB8 1LD	Project description Cinema Conversion	Scale 1:20@A1	Job No 0242
Title Existing Section DD Floor/wall detail	Stage Listed building application	Drawing No A132	Rev -

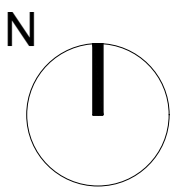
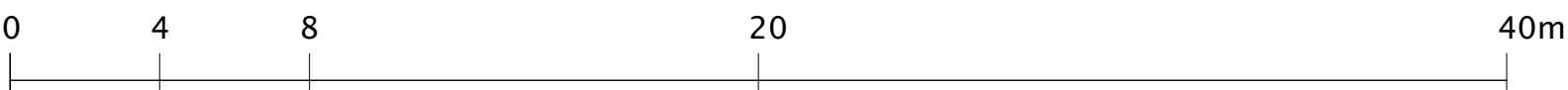


Nick Willson Architects

Second Home
68 Hanbury Street
London
E1 5JL
www.nickwillsonarchitects.com

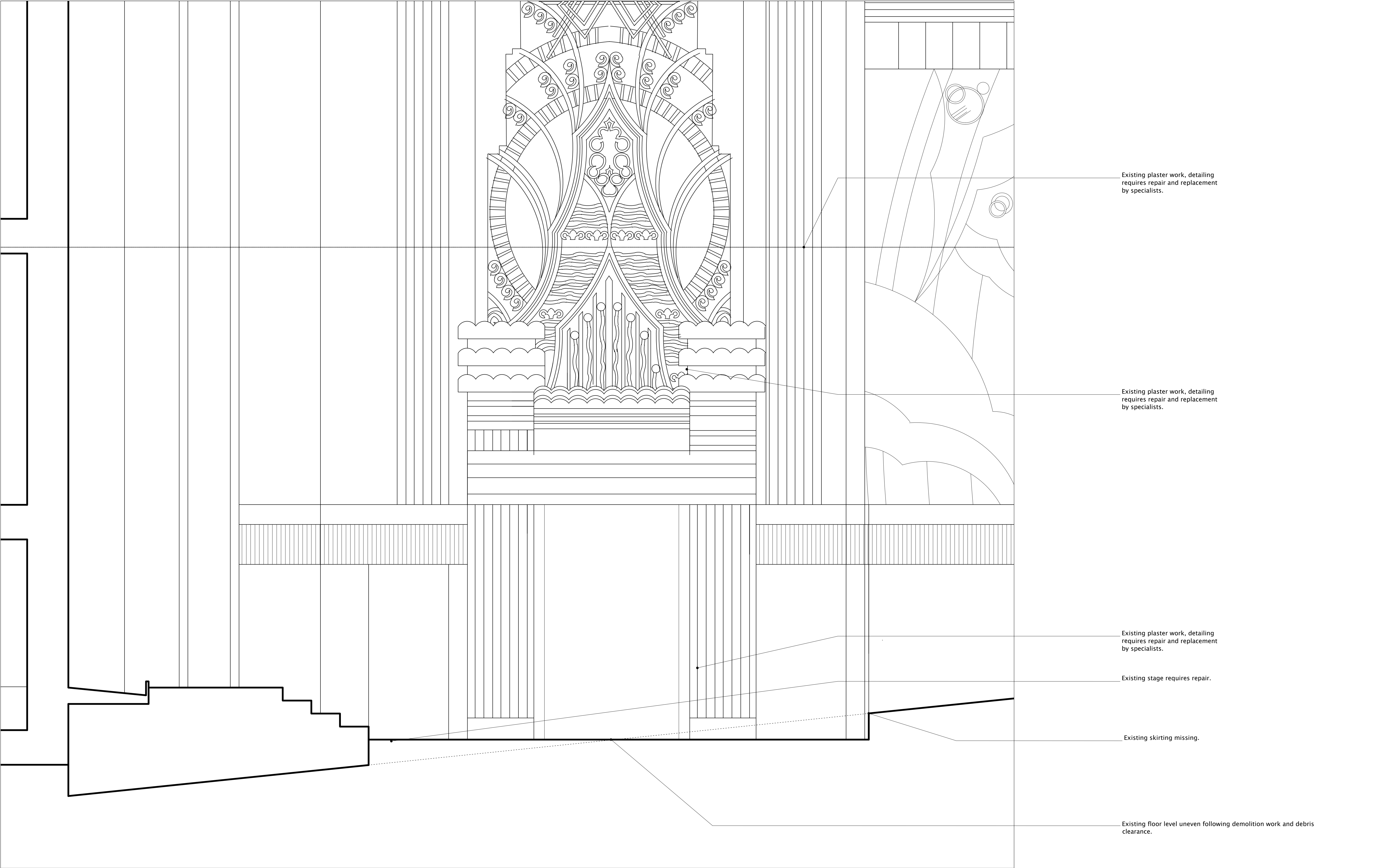
Notes:
All dimensions to be confirmed by contractor on site.

Scale 1:200



Rev	Date	Description	By	Ck

Project 233 High Street, Uxbridge, London, UB8 1LD	Project description Cinema Conversion	Scale 1:20@A1	Job No 0242
Title Proposed Section EE Floor/wall detail	Stage Listed building application	Drawing No A233	Rev —

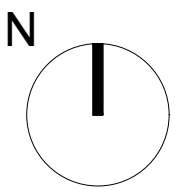
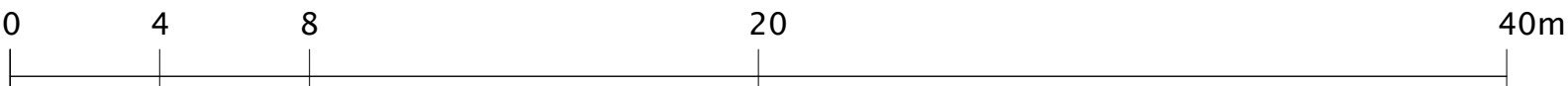


Nick Willson Architects

Second Home
68 Hanbury Street
London
E1 5JL
www.nickwillsonarchitects.com

Notes:
All dimensions to be confirmed by contractor on site.

Scale 1:200



Rev	Date	Description	By	Ck

Project 233 High Street, Uxbridge, London, UB8 1LD	Project description Cinema Conversion	Scale 1:20@A1	Job No 0242
Title Existing Section BB Stage detail	Stage Listed building application	Drawing No A134	Rev —