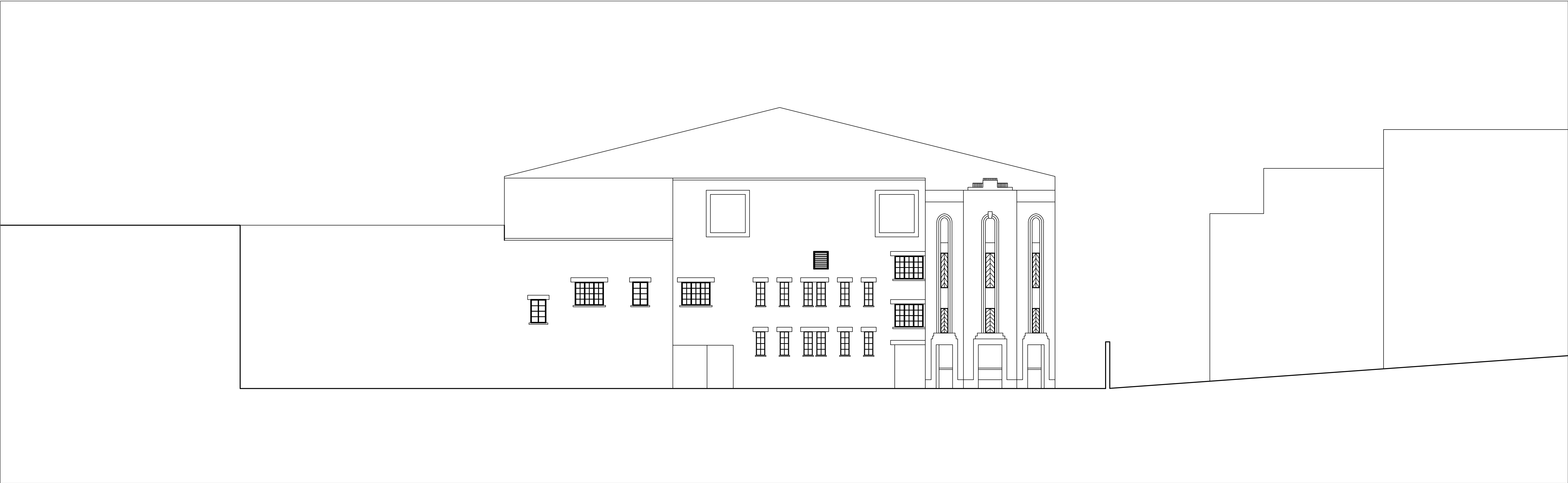


East elevation 1:200 at A1



East elevation 1:100 at A1

Nick Willson Architects

Second Home
68 Hanbury Street
London
E1 5JL
www.nickwillsonarchitects.com

Notes:

All dimensions to be confirmed by contractor on site.

Scale 1:100

0 2 4 10

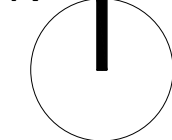
20m

Scale 1:200

0 4 8 20

40m

N



Rev	Date	Description	By	Ck	Project 233 High Street, Uxbridge, London, UB8 1LD	Project description New hotel and banqueting hall	Scale 1:100@A1	Job No 0242
					Title Proposed east elevations	Stage Full planning application	Drawing No A214	Rev —