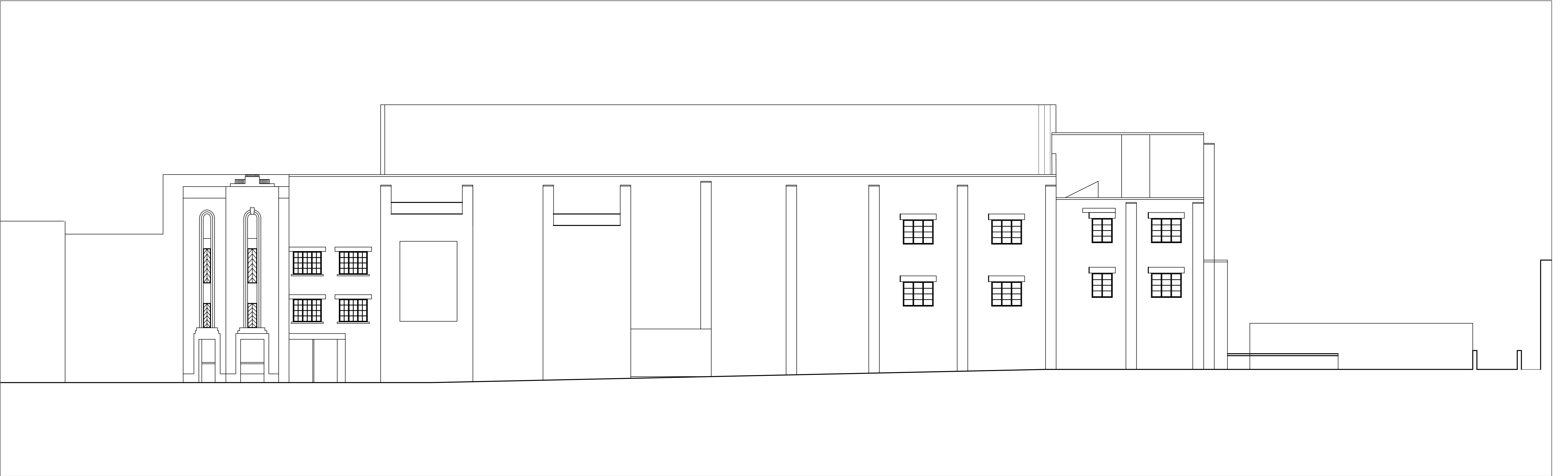


North elevation 1:200 at A1



North elevation 1:100 at A1

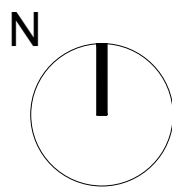
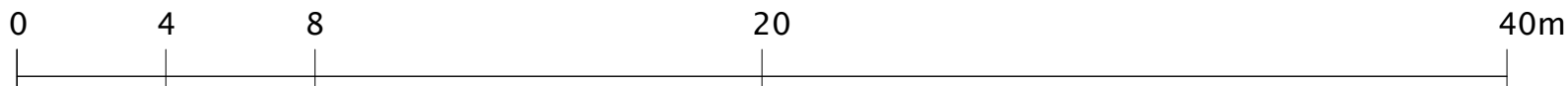
Nick Willson Architects

Second Home
68 Hanbury Street
London
E1 5JL
www.nickwillsonarchitects.com

Notes:

All dimensions to be confirmed by contractor on site.

Scale 1:200



Rev	Date	Description	By	Ck

Project 233 High Street, Uxbridge, London, UB8 1LD	Project description New hotel and banqueting hall	Scale 1:100@A1	Job No 0242
Title Existing north elevations	Stage Full planning application	Drawing No A113	Rev —