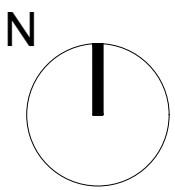


- Legend:
- 1. Entrance lobby.
  - 2. Coats.
  - 3. Pay booth.
  - 4. Snooker club entrance.
  - 5. Plant room.
  - 6. Stairs.
  - 7. Sub station.
  - 8. Beer cellar.
  - 9. Retained bar area post demolition.
  - 10. Bar area pre demolition.
  - 11. Cinema/night club floor pre demolition.
  - 12. Original exits.
  - 13. Gym spaces.
  - 14. Old plant room.
  - 15. WC and BOH.

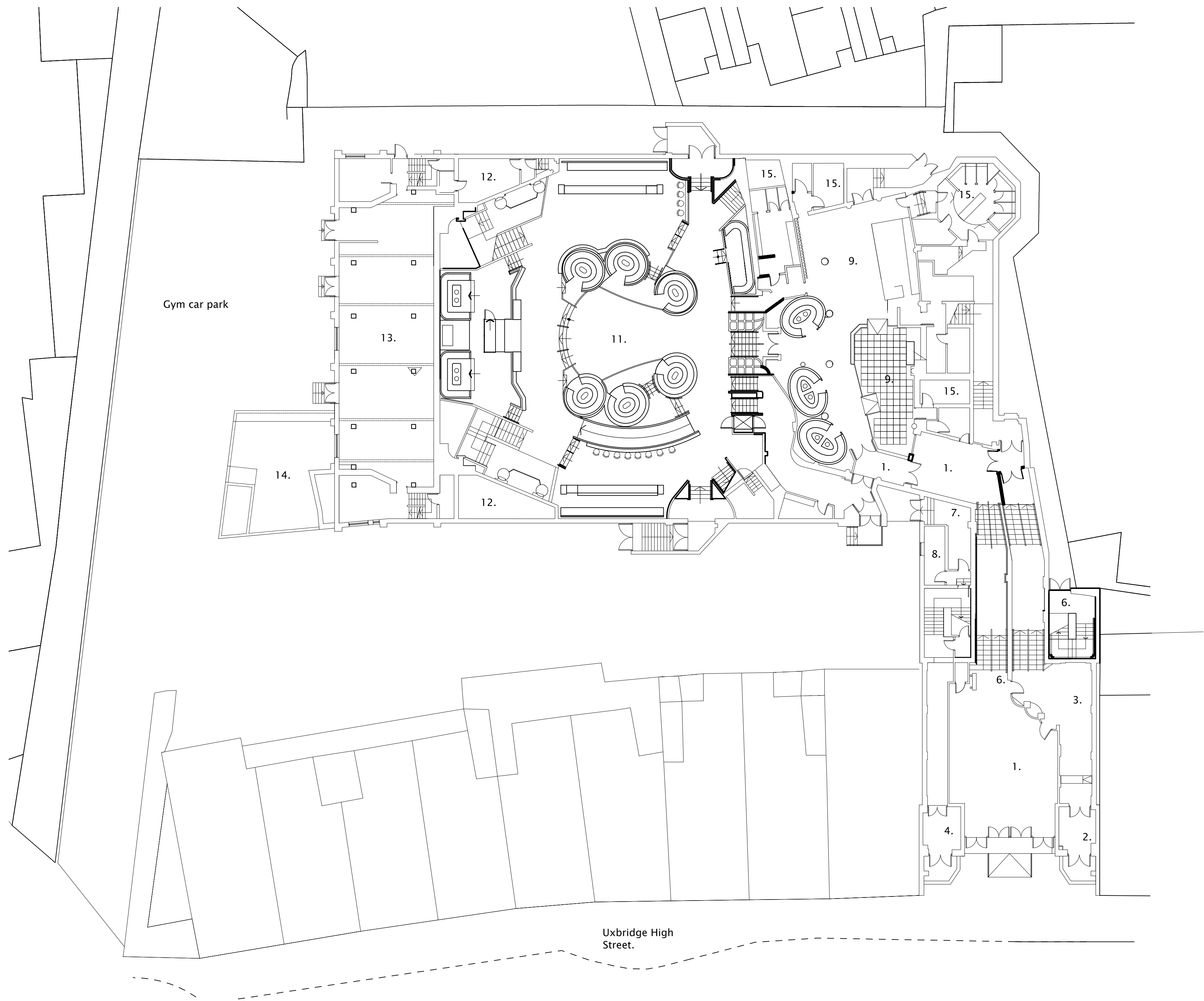


Rev	Date	Description	By	Ck

Project 233 High Street, Uxbridge, London, UB8 1LD	Project description Cinema Conversion	Scale 1:200@A1	Job No 0242
Title Pre-Existing Lower Ground Floor Plan	Stage Listed building application	Drawing No A200	Rev —

Legend:

- 1. Entrance lobby.
- 2. Coats.
- 3. Pay booth.
- 4. Snooker club entrance.
- 5. Plant room.
- 6. Stairs.
- 7. Sub station.
- 8. Beer cellar.
- 9. Retained bar area pre demolition.
- 10. Bar area pre demolition.
- 11. Cinema/night club floor pre demolition.
- 12. Original exits.
- 13. Gym spaces.
- 14. Old plant room.
- 15. WC and BOH.



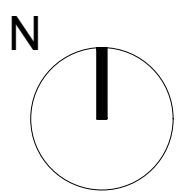
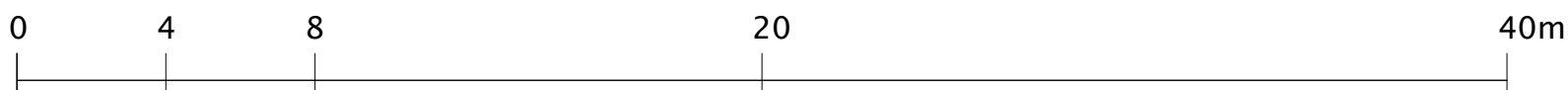
Nick Willson Architects

Second Home  
68 Hanbury Street  
London  
E1 5JL  
www.nickwillsonarchitects.com

Notes:

All dimensions to be confirmed by contractor on site.

Scale 1:200

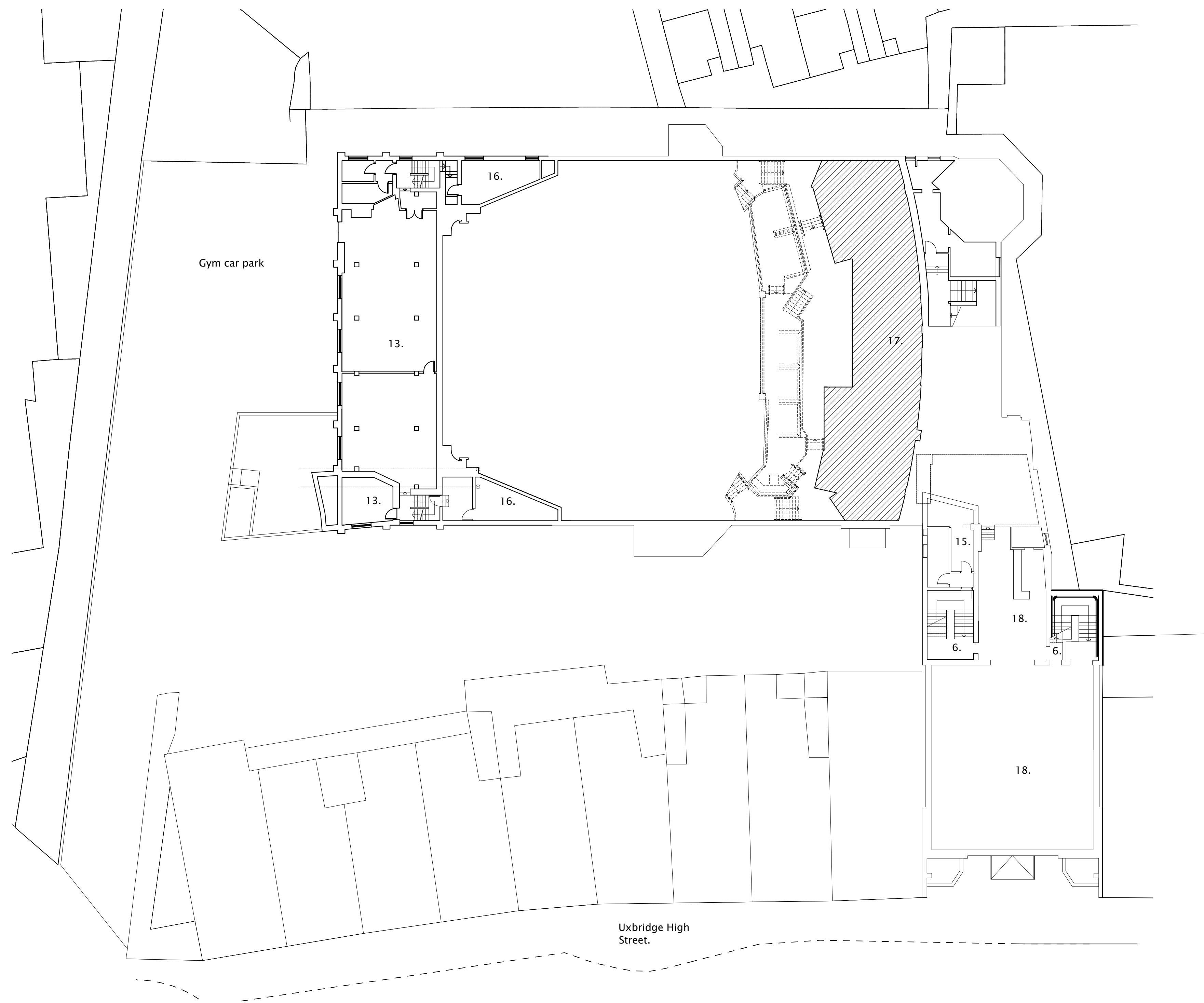


Rev	Date	Description	By	Ck

Project 233 High Street, Uxbridge, London, UB8 1LD	Project description <b>Cinema Conversion</b>	Scale 1:200@A1	Job No <b>0242</b>
Title <b>Pre-Existing Ground Floor Plan</b>	Stage <b>Listed building application</b>	Drawing No <b>A201</b>	Rev <b>—</b>

Legend:

- 1. Entrance lobby.
- 2. Coats.
- 3. Pay booth.
- 4. Snooker club entrance.
- 5. Plant room.
- 6. Stairs.
- 7. Sub station.
- 8. Beer cellar.
- 9. Retained bar area pre demolition.
- 10. Bar area pre demolition.
- 11. Cinema/night club floor pre demolition.
- 12. Original exits.
- 13. Gym spaces.
- 14. Old plant room.
- 15. WC and BOH.
- 16. Music rooms.
- 17. Pre demolition mezzanine.
- 18. Snooker halls.



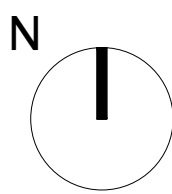
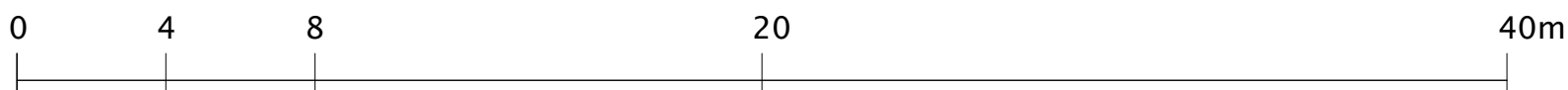
Nick Willson Architects

Second Home  
68 Hanbury Street  
London  
E1 5JL  
www.nickwillsonarchitects.com

Notes:

All dimensions to be confirmed by contractor on site.

Scale 1:200

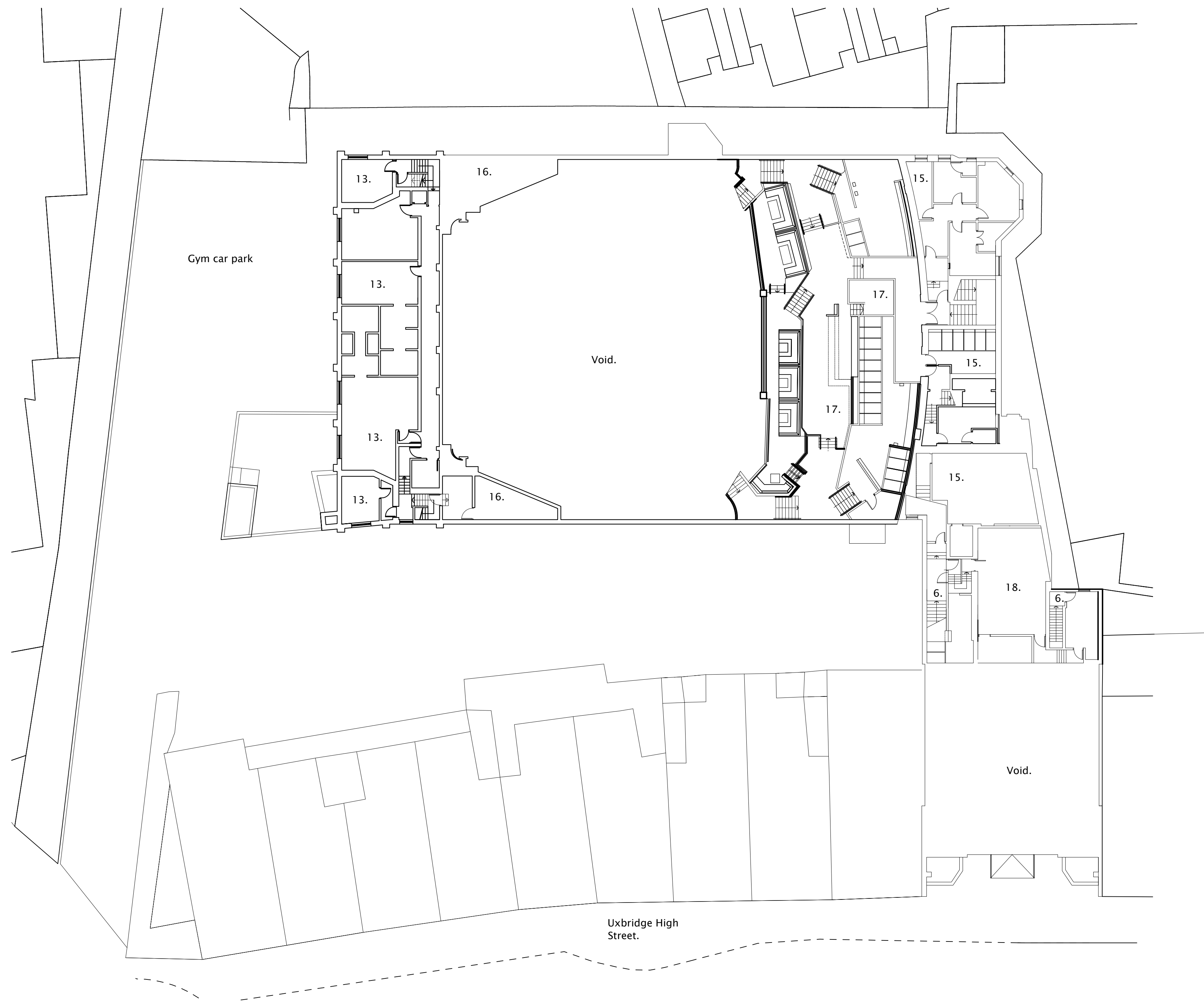


Rev	Date	Description	By	Ck

Project 233 High Street, Uxbridge, London, UB8 1LD	Project description Cinema Conversion	Scale 1:200@A1	Job No 0242
Title Pre-Existing 1st Floor Plan	Stage Listed building application	Drawing No A202	Rev -

Legend:

- 1. Entrance lobby.
- 2. Coats.
- 3. Pay booth.
- 4. Snooker club entrance.
- 5. Plant room.
- 6. Stairs.
- 7. Sub station.
- 8. Beer cellar.
- 9. Retained bar area post demolition.
- 10. Bar area post demolition.
- 11. Cinema/night club floor post demolition.
- 12. Original exits.
- 13. Gym spaces.
- 14. Old plant room.
- 15. WC and BOH.
- 16. Music rooms.
- 17. Part demolished mezzanine.
- 18. Snooker halls.



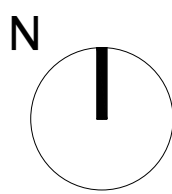
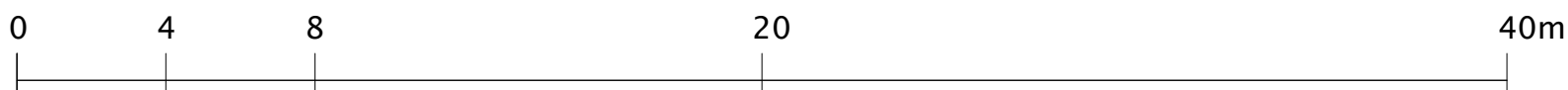
Nick Willson Architects

Second Home  
68 Hanbury Street  
London  
E1 5JL  
www.nickwillsonarchitects.com

Notes:

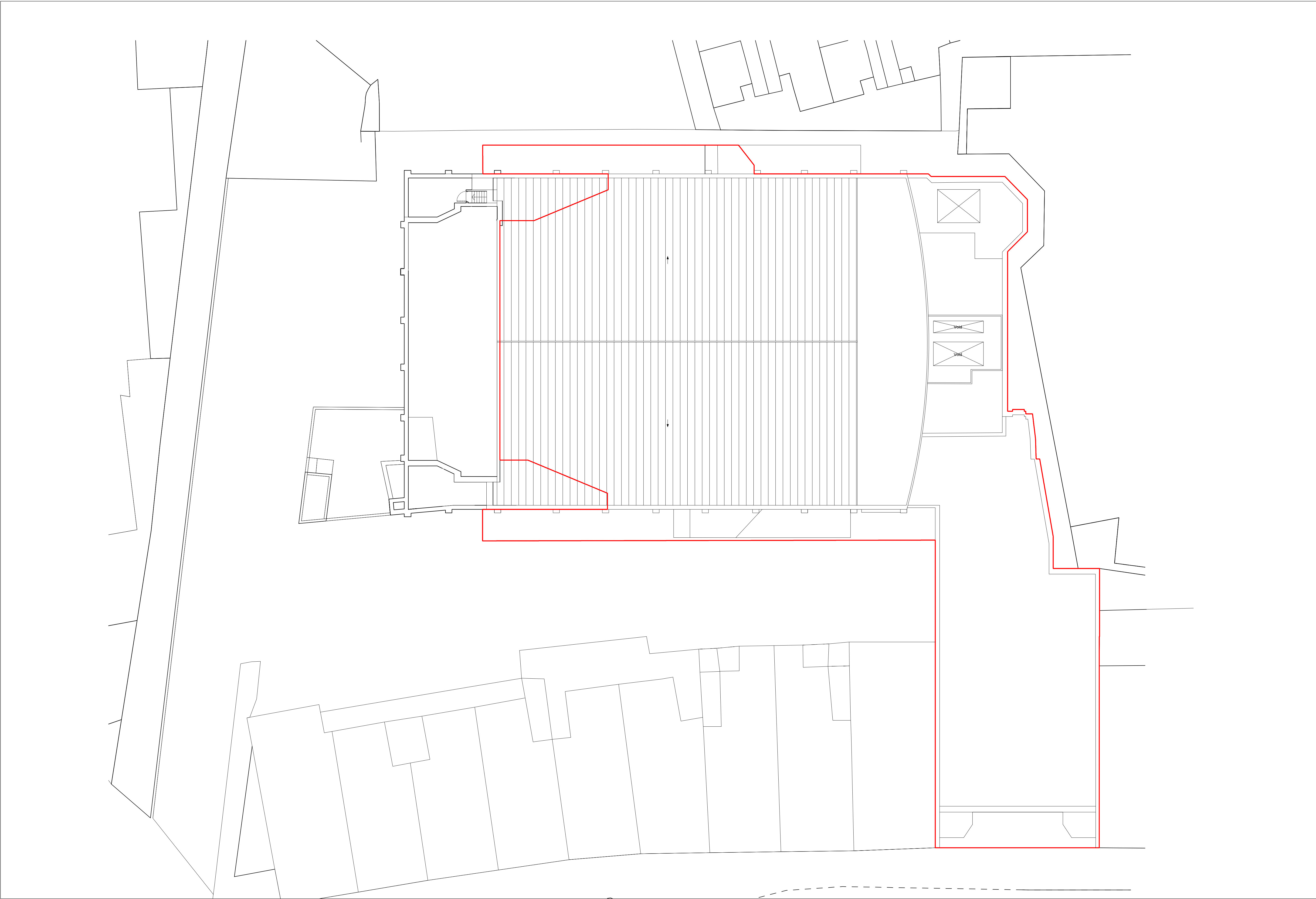
All dimensions to be confirmed by contractor on site.

Scale 1:200



Rev	Date	Description	By	Ck

Project 233 High Street, Uxbridge, London, UB8 1LD	Project description Cinema Conversion	Scale 1:200@A1	Job No 0242
Title Pre-Existing 2nd Floor Plan	Stage Listed building application	Drawing No A203	Rev —



Nick Willson Architects

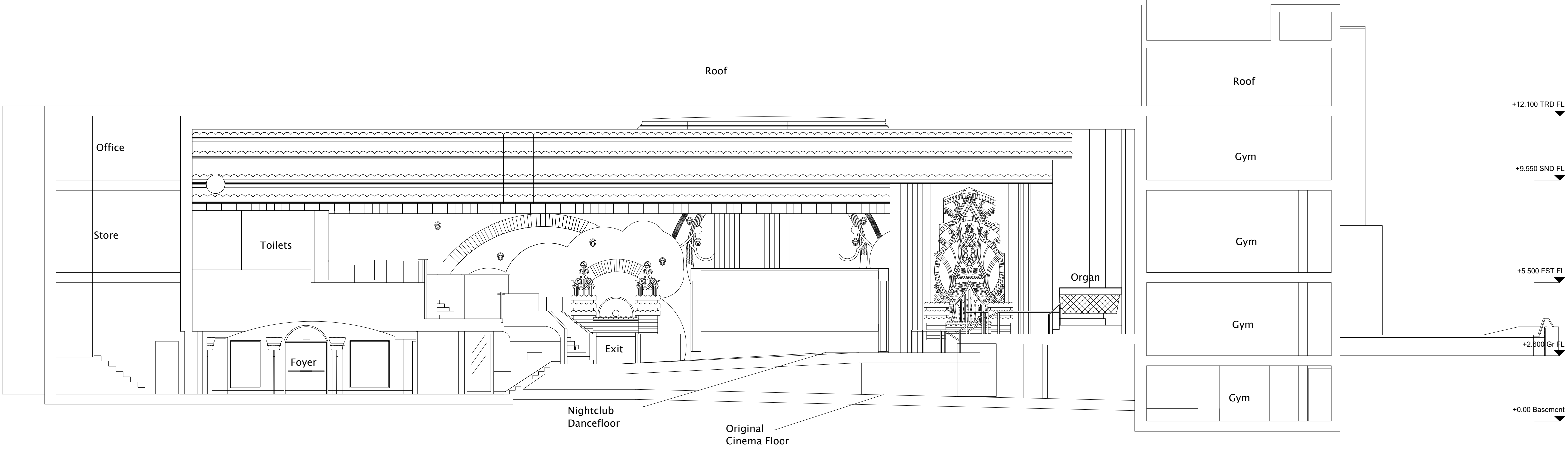
Second Home  
68 Hanbury Street  
London  
E1 5JL  
www.nickwillsonarchitects.com

Notes:  
All dimensions to be confirmed by contractor on site.



Rev	Date	Description	By	Ck

Project 233 High Street, Uxbridge, London, UB8 1LD	Project description Cinema Conversion	Scale 1:200@A1	Job No 0242
	Stage Listed building application	Drawing No A204	Rev -

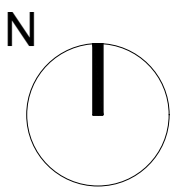
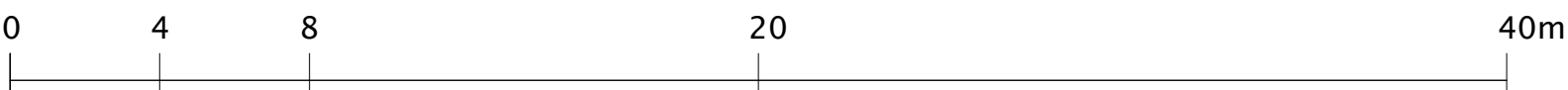


Nick Willson Architects

Second Home  
68 Hanbury Street  
London  
E1 5JL  
www.nickwillsonarchitects.com

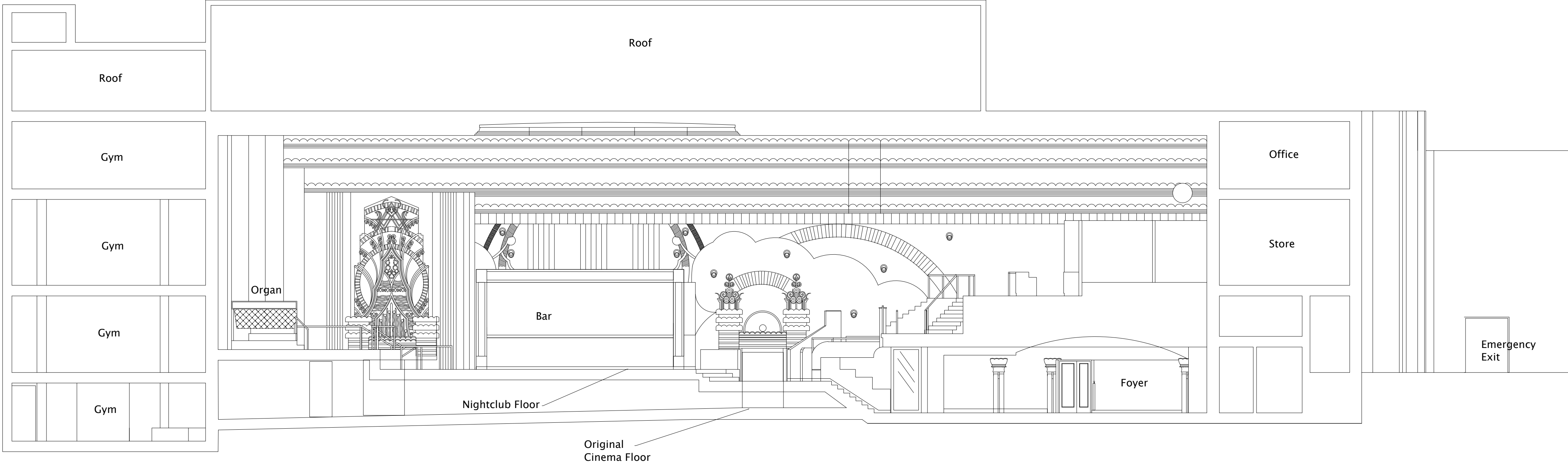
Notes:  
All dimensions to be confirmed by contractor on site.

Scale 1:200



Rev	Date	Description	By	Ck

Project 233 High Street, Uxbridge, London, UB8 1LD	Project description Cinema Conversion		Scale 1:100@A1	Job No 0242
	Title Pre-Existing Nightclub Section AA	Stage Listed building application	Drawing No A220	Rev -



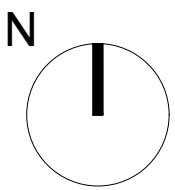
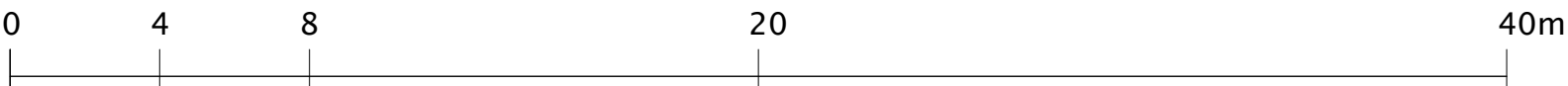
+12.100 TRD FL  
▼  
+9.550 SND FL  
▼  
+5.500 FST FL  
▼  
+2.600 Gr FL  
▼  
+0.00 Basement  
▼

# Nick Willson Architects

Second Home  
68 Hanbury Street  
London  
E1 5JL  
www.nickwillsonarchitects.com

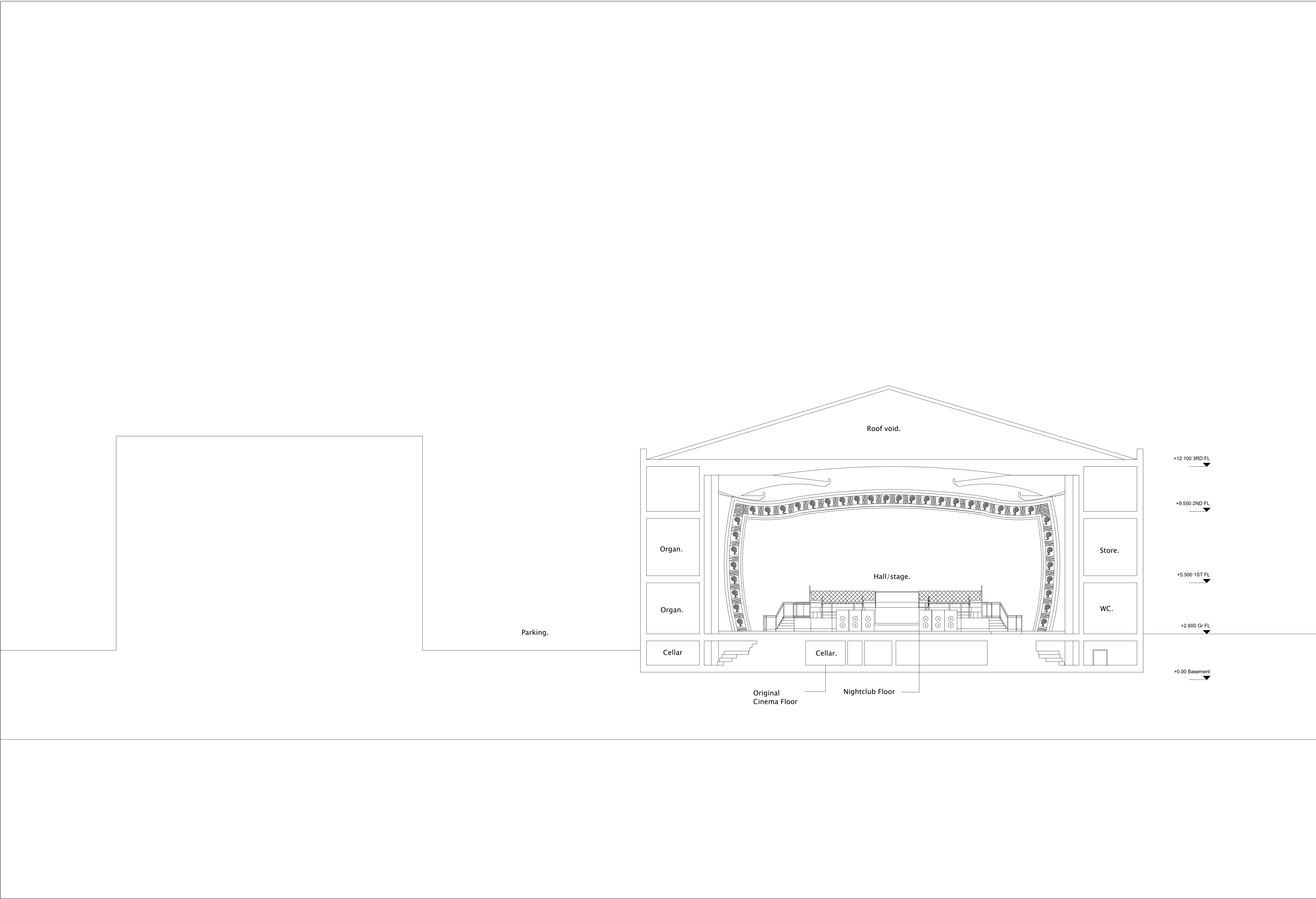
Notes:  
All dimensions to be confirmed by contractor on site.

Scale 1:200



Rev	Date	Description	By	Ck

Project 233 High Street, Uxbridge, London, UB8 1LD	Project description <b>Cinema Conversion</b>	Scale 1:100@A1	Job No <b>0242</b>
Title <b>Pre-Existing Nightcub Section BB</b>	Stage <b>Listed building application</b>	Drawing No <b>A221</b>	Rev <b>-</b>

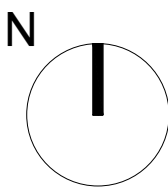
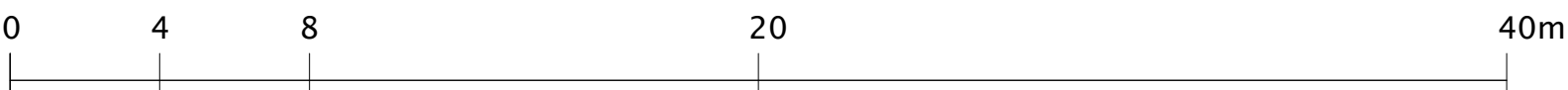


# Nick Willson Architects

Second Home  
68 Hanbury Street  
London  
E1 5JL  
www.nickwillsonarchitects.com

Notes:  
All dimensions to be confirmed by contractor on site.

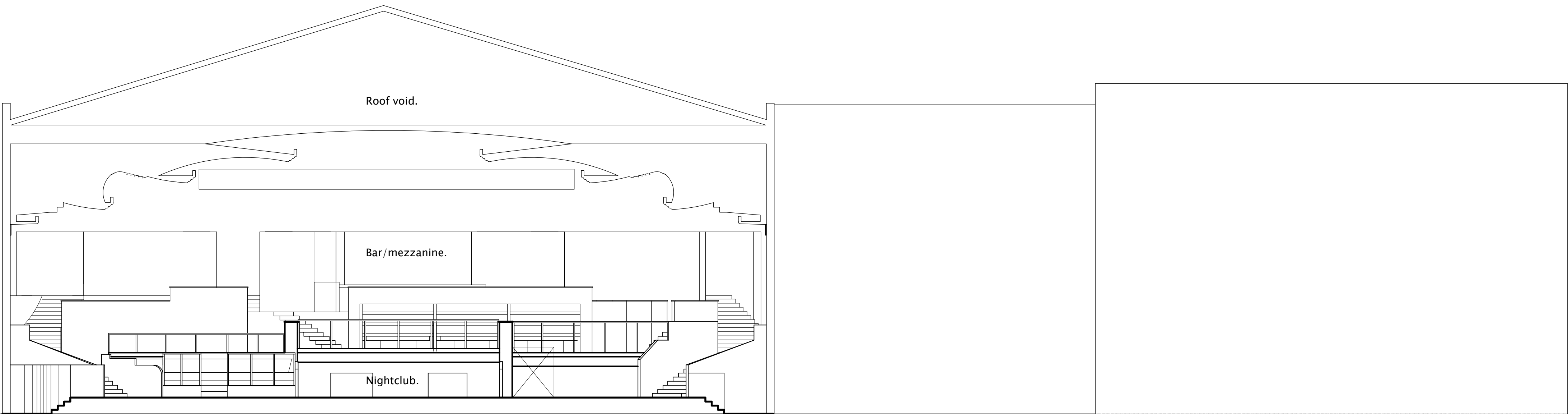
Scale 1:200



Rev	Date	Description	By	Ck

Project 233 High Street, Uxbridge, London, UB8 1LD	Project description Cinema Conversion	Scale 1:100@A1	Job No 0242
Title Pre-Existing Nightclub Section CC	Stage Listed building application	Drawing No A222	Rev -



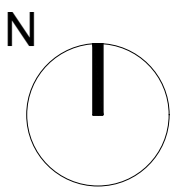
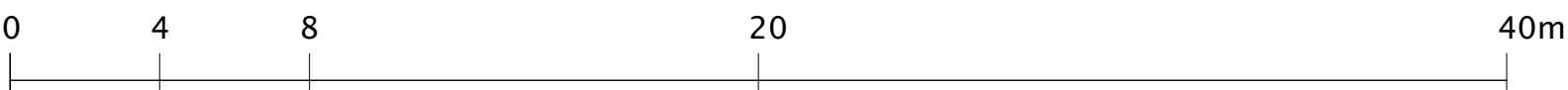


# Nick Willson Architects

Second Home  
68 Hanbury Street  
London  
E1 5JL  
www.nickwillsonarchitects.com

Notes:  
All dimensions to be confirmed by contractor on site.

Scale 1:200



Rev	Date	Description	By	Ck

Project 233 High Street, Uxbridge, London, UB8 1LD	Project description <b>Cinema Conversion</b>	Scale 1:100@A1	Job No <b>0242</b>
Title <b>Pre-Existing Nightclub Section DD</b>	Stage <b>Listed building application</b>	Drawing No <b>A223</b>	Rev <b>-</b>