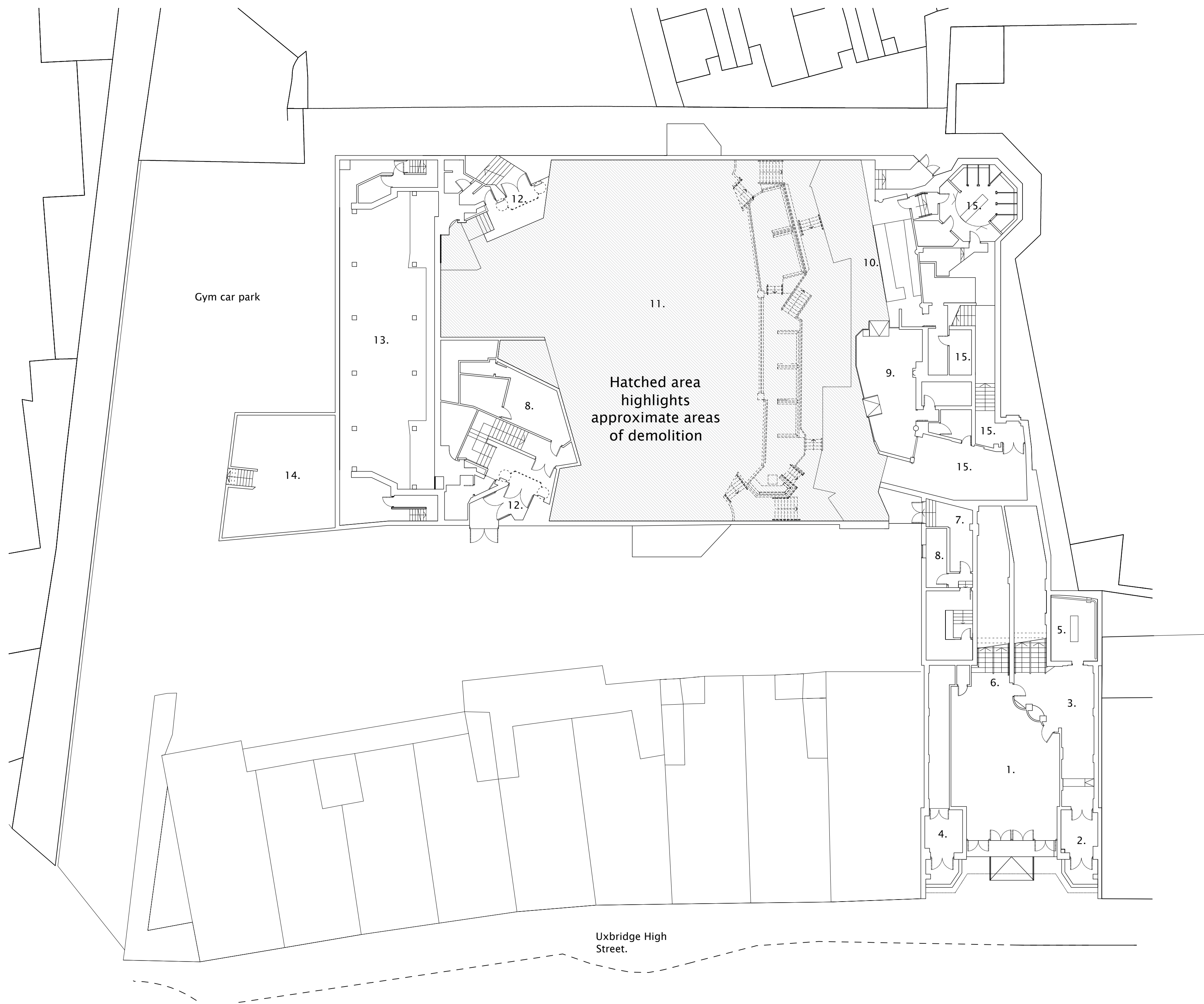


Legend:

- 1. Entrance lobby.
- 2. Coats.
- 3. Pay booth.
- 4. Snooker club entrance.
- 5. Plant room.
- 6. Stairs.
- 7. Sub station.
- 8. Beer cellar.
- 9. Retained bar area post demolition.
- 10. Bar area post demolition.
- 11. Cinema/night club floor post demolition.
- 12. Original exits.
- 13. Gym spaces.
- 14. Old plant room.
- 15. WC and BOH.



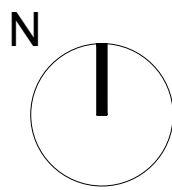
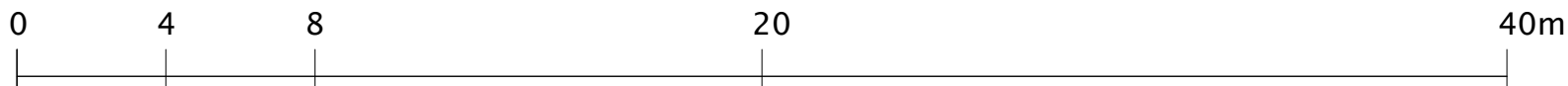
Nick Willson Architects

Second Home  
68 Hanbury Street  
London  
E1 5JL  
www.nickwillsonarchitects.com

Notes:

All dimensions to be confirmed by contractor on site.

Scale 1:200



Rev	Date	Description	By	Ck

Project 233 High Street, Uxbridge, London, UB8 1LD
Title Existing Lower Ground Floor Plan

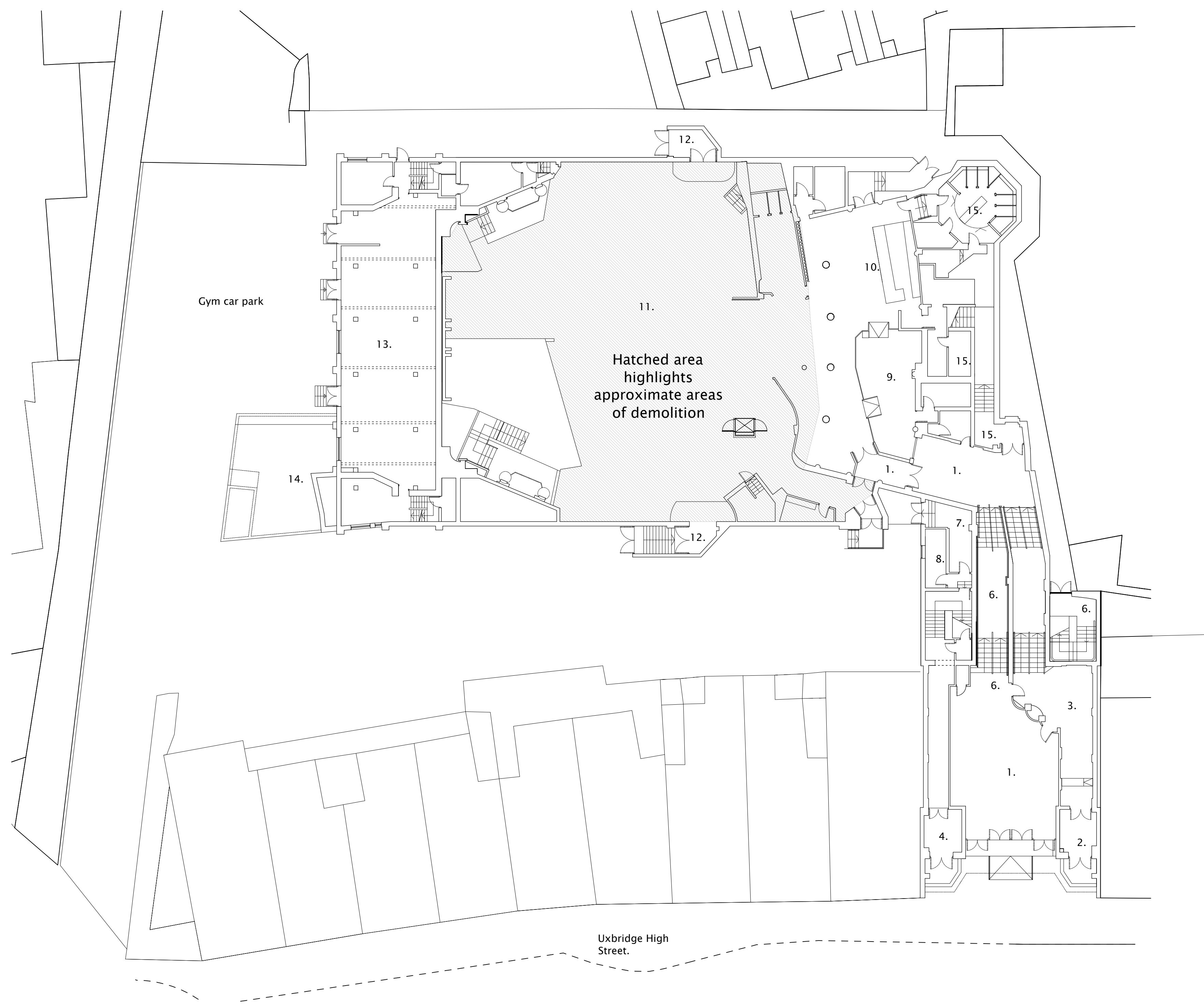
Project description Cinema Conversion
Stage Listed building application

Scale 1:200@A1
Drawing No A100

Job No 0242
Rev -

Legend:

- 1. Entrance lobby.
- 2. Coats.
- 3. Pay booth.
- 4. Snooker club entrance.
- 5. Plant room.
- 6. Stairs.
- 7. Sub station.
- 8. Beer cellar.
- 9. Retained bar area post demolition.
- 10. Bar area post demolition.
- 11. Cinema/night club floor post demolition.
- 12. Original exits.
- 13. Gym spaces.
- 14. Old plant room.
- 15. WC and BOH.



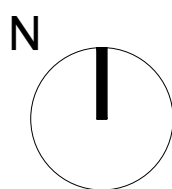
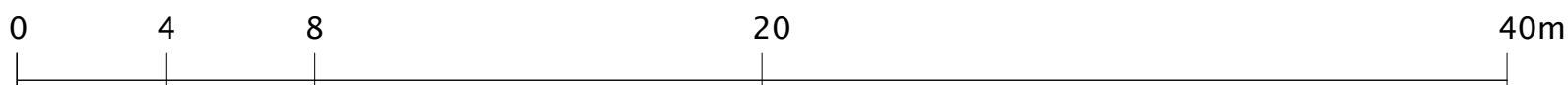
Nick Willson Architects

Second Home  
68 Hanbury Street  
London  
E1 5JL  
www.nickwillsonarchitects.com

Notes:

All dimensions to be confirmed by contractor on site.

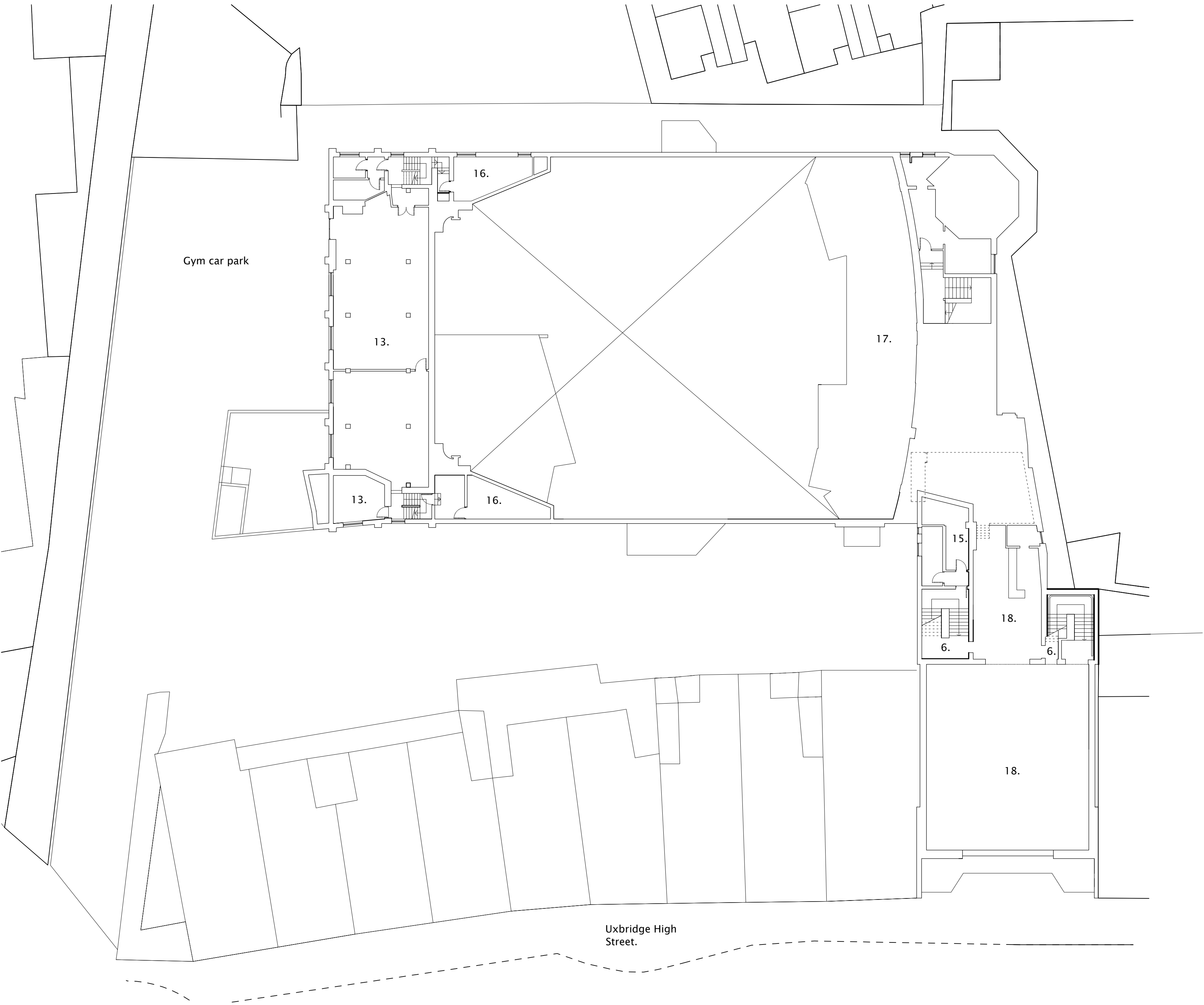
Scale 1:200



Rev	Date	Description	By	Ck

Project 233 High Street, Uxbridge, London, UB8 1LD	Project description Cinema Conversion	Scale 1:200@A1	Job No 0242
Title Existing Ground Floor Plan	Stage Listed building application	Drawing No A101	Rev —

- Legend:
- 1. Entrance lobby.
  - 2. Coats.
  - 3. Pay booth.
  - 4. Snooker club entrance.
  - 5. Plant room.
  - 6. Stairs.
  - 7. Sub station.
  - 8. Beer cellar.
  - 9. Retained bar area post demolition.
  - 10. Bar area post demolition.
  - 11. Cinema/night club floor post demolition.
  - 12. Original exits.
  - 13. Gym spaces.
  - 14. Old plant room.
  - 15. WC and BOH.
  - 16. Music rooms.
  - 17. Part demolished mezzanine.
  - 18. Snooker halls.

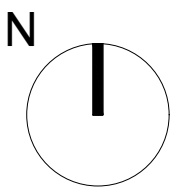
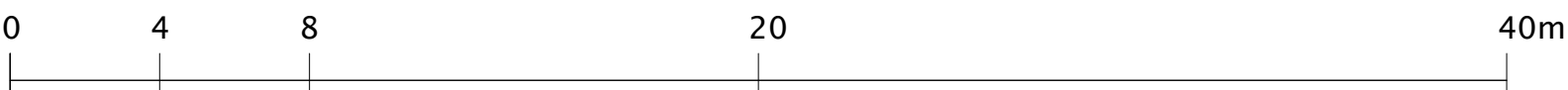


Nick Willson Architects

Second Home  
68 Hanbury Street  
London  
E1 5JL  
www.nickwillsonarchitects.com

Notes:  
All dimensions to be confirmed by contractor on site.

Scale 1:200



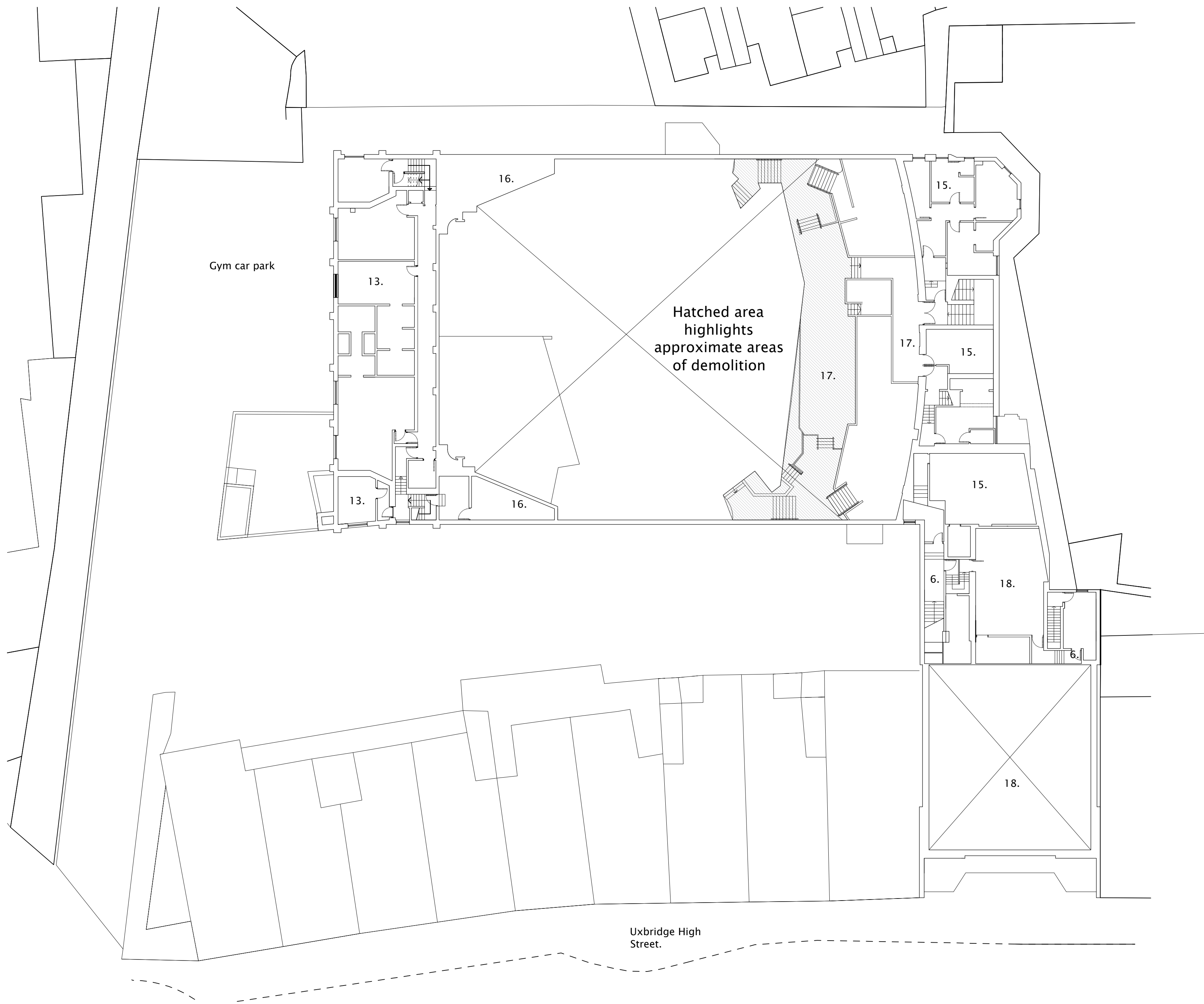
Rev	Date	Description	By	Ck

Project 233 High Street, Uxbridge, London, UB8 1LD	Project description Cinema Conversion	Scale 1:200@A1	Job No 0242
Title Existing 1st Floor Plan	Stage Listed building application	Drawing No A102	Rev -



Legend:

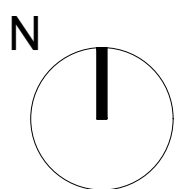
- 1. Entrance lobby.
- 2. Coats.
- 3. Pay booth.
- 4. Snooker club entrance.
- 5. Plant room.
- 6. Stairs.
- 7. Sub station.
- 8. Beer cellar.
- 9. Retained bar area post demolition.
- 10. Bar area post demolition.
- 11. Cinema/night club floor post demolition.
- 12. Original exits.
- 13. Gym spaces.
- 14. Old plant room.
- 15. WC and BOH.
- 16. Music rooms.
- 17. Part demolished mezzanine.
- 18. Snooker halls.



Notes:

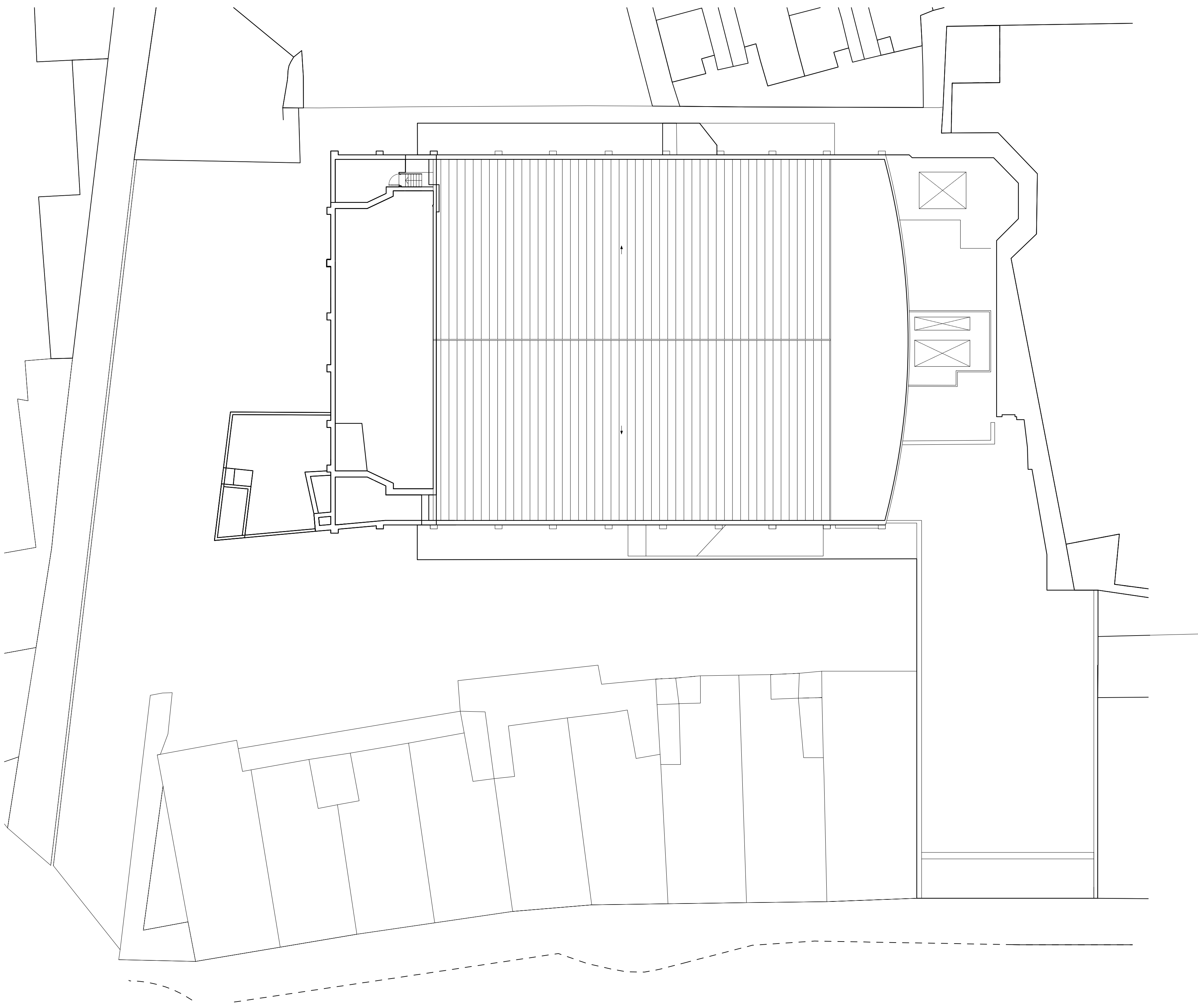
All dimensions to be confirmed by contractor on site.

Scale 1:200



Rev	Date	Description	By	Ck

Project 233 High Street, Uxbridge, London, UB8 1LD	Project description <b>Cinema Conversion</b>	Scale 1:200@A1	Job No <b>0242</b>
Title <b>Existing 2nd Floor Plan</b>	Stage <b>Listed building application</b>	Drawing No <b>A103</b>	Rev <b>—</b>



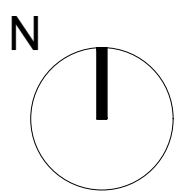
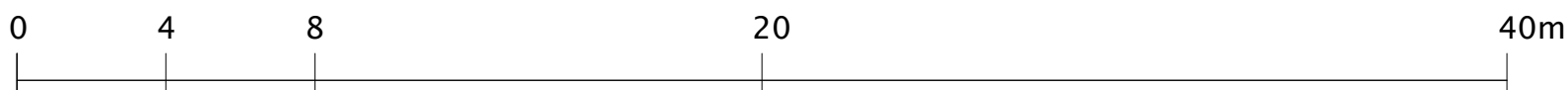
# Nick Willson Architects

Second Home  
68 Hanbury Street  
London  
E1 5JL  
[www.nickwillsonarchitects.com](http://www.nickwillsonarchitects.com)

## Notes:

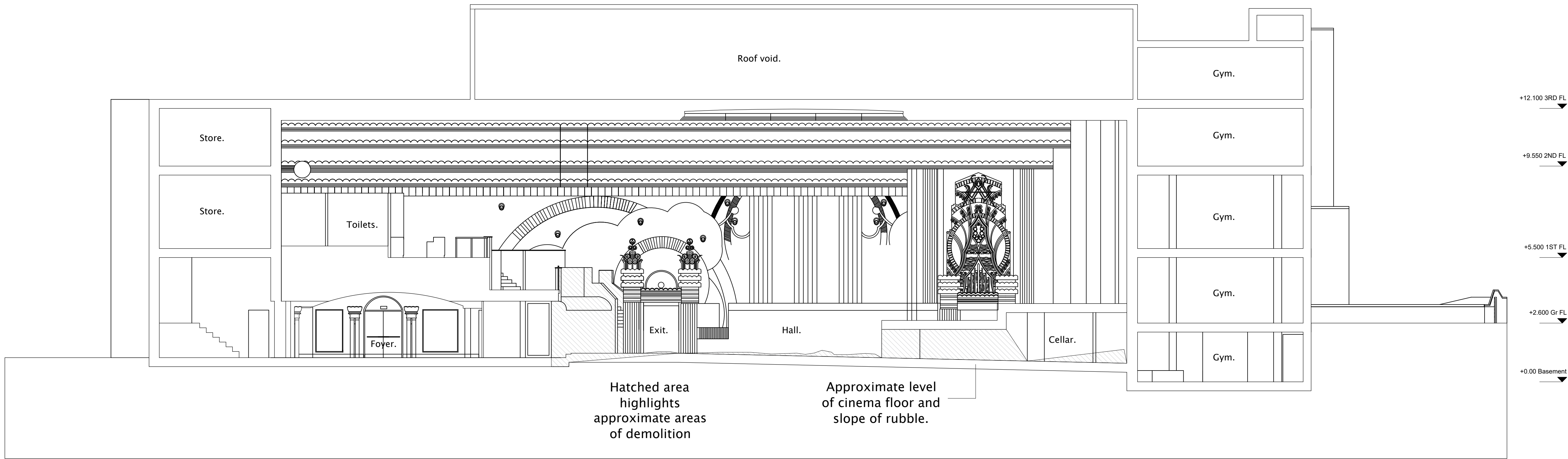
All dimensions to be confirmed by contractor on site.

Scale 1:200



Rev	Date	Description	By	Ck

Project 233 High Street, Uxbridge, London, UB8 1LD	Project description <b>Cinema Conversion</b>	Scale 1:200@A1	Job No <b>0242</b>
	Title <b>Existing Roof Plan</b>	Stage Listed building application	Rev —

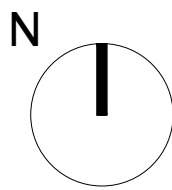
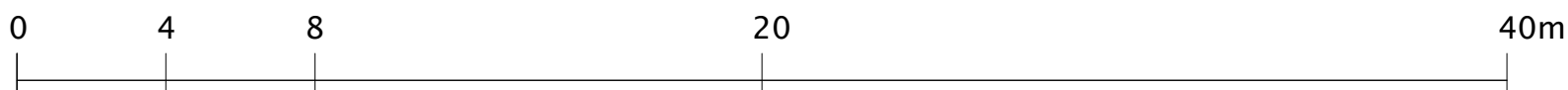


# Nick Willson Architects

Second Home  
68 Hanbury Street  
London  
E1 5JL  
www.nickwillsonarchitects. com

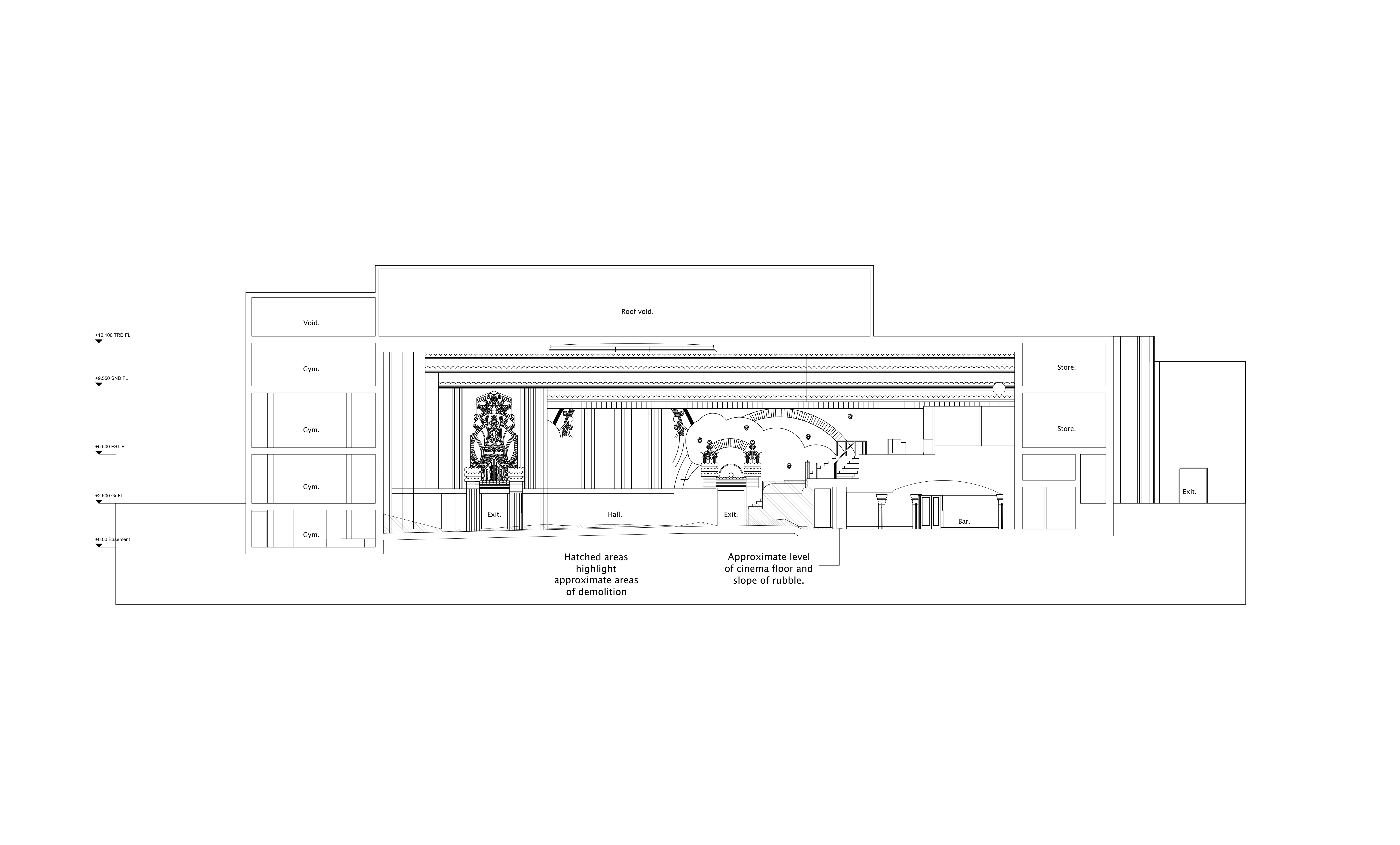
Notes:  
All dimensions to be confirmed by contractor on site.

Scale 1:200



Rev	Date	Description	By	Ck

Project 233 High Street, Uxbridge, London, UB8 1LD	Project description <b>Cinema Conversion</b>	Scale 1:100@A1	Job No <b>0242</b>
Title <b>Existing Section AA</b>	Stage <b>Listed building application</b>	Drawing No <b>A120</b>	Rev <b>—</b>

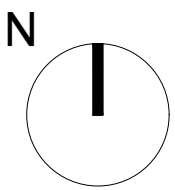
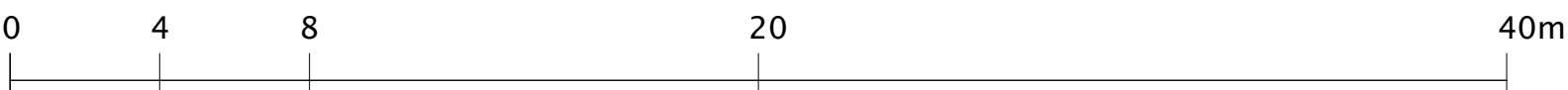


Nick Willson Architects

Second Home  
68 Hanbury Street  
London  
E1 5JL  
www.nickwillsonarchitects.com

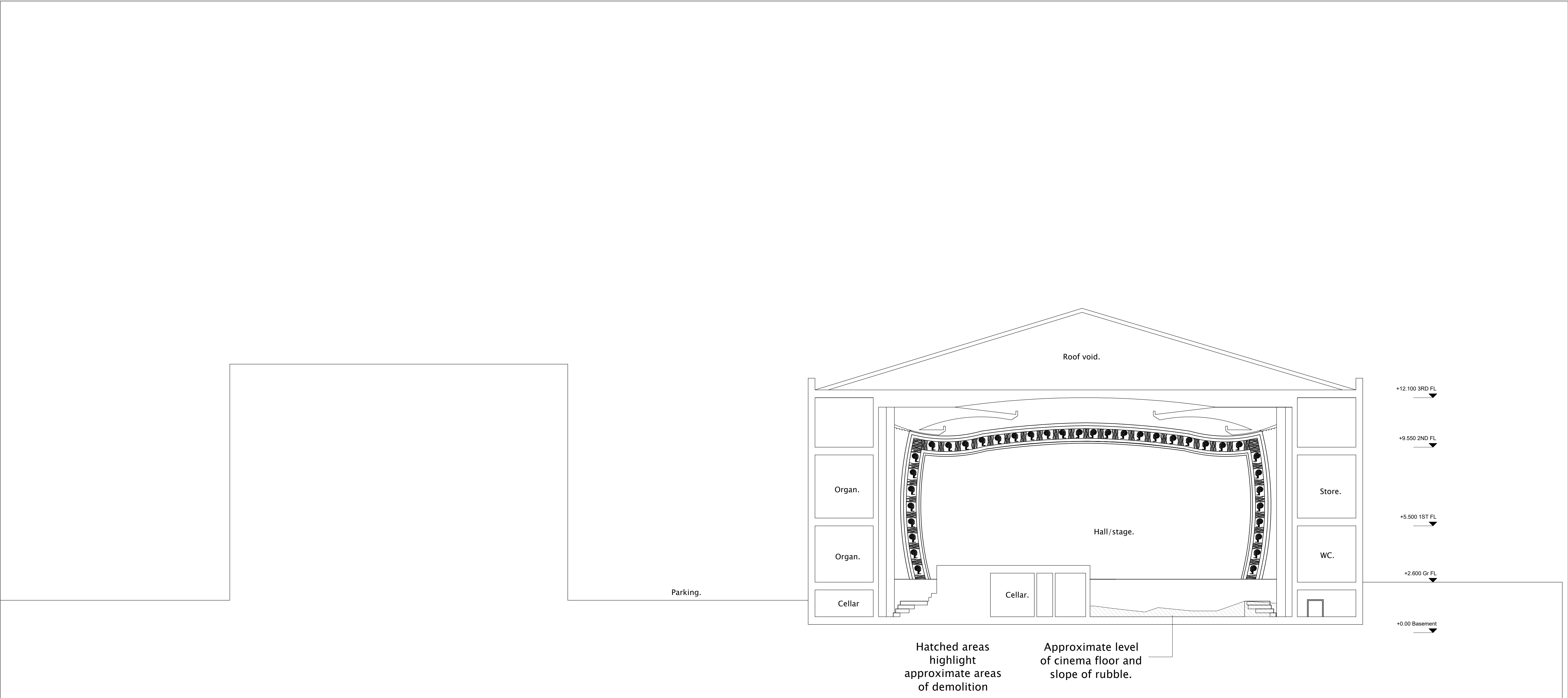
Notes:  
All dimensions to be confirmed by contractor on site.

Scale 1:200



Rev	Date	Description	By	Ck

Project 233 High Street, Uxbridge, London, UB8 1LD	Project description <b>Cinema Conversion</b>		Scale 1:100@A1	Job No <b>0242</b>
	Title <b>Existing Section BB</b>	Stage <b>Listed building application</b>	Drawing No <b>A121</b>	Rev <b>—</b>

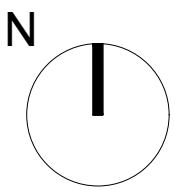
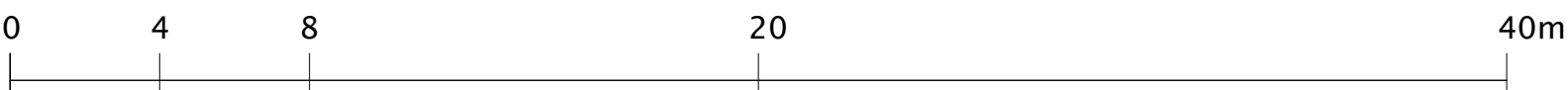


# Nick Willson Architects

Second Home  
68 Hanbury Street  
London  
E1 5JL  
www.nickwillsonarchitects. com

Notes:  
All dimensions to be confirmed by contractor on site.

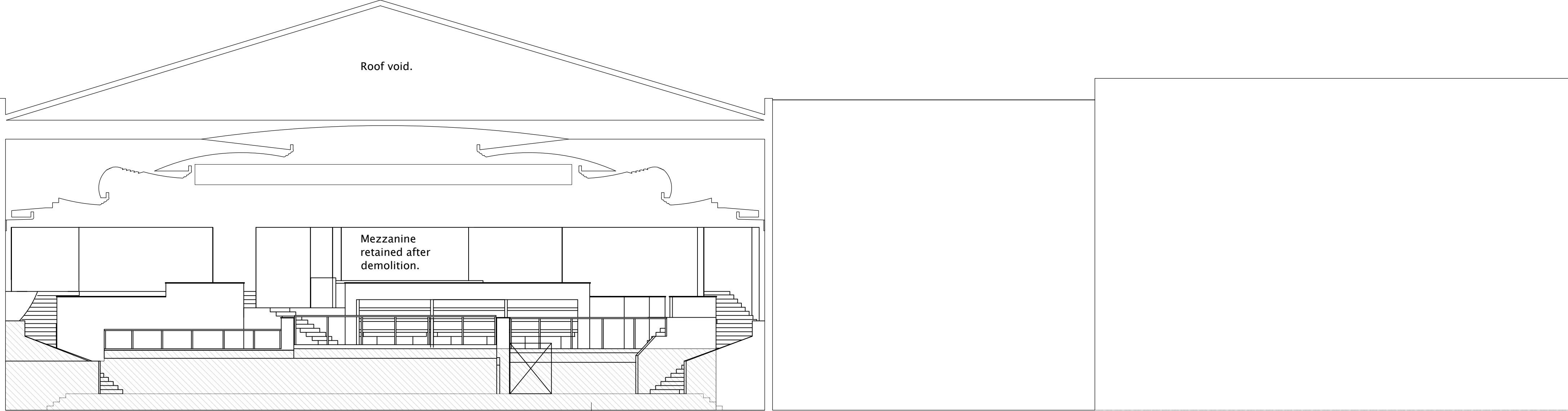
Scale 1:200



Rev	Date	Description	By	Ck

Project 233 High Street, Uxbridge, London, UB8 1LD	Project description <b>Cinema Conversion</b>	Scale 1:100@A1	Job No <b>0242</b>
Title <b>Existing Section CC</b>	Stage <b>Listed building application</b>	Drawing No <b>A122</b>	Rev <b>-</b>





Hatched areas highlight approximate areas of demolition

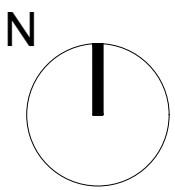
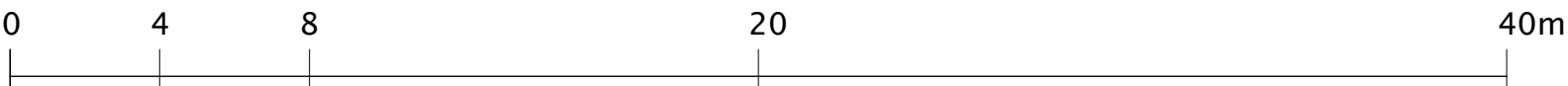
Approximate level of cinema floor and slope of rubble.

# Nick Willson Architects

Second Home  
68 Hanbury Street  
London  
E1 5JL  
www.nickwillsonarchitects.com

Notes:  
All dimensions to be confirmed by contractor on site.

Scale 1:200



Rev	Date	Description	By	Ck	

Project 233 High Street, Uxbridge, London, UB8 1LD	Project description Cinema Conversion	Scale 1:100@A1	Job No 0242
Title Existing Section DD	Stage Listed building application	Drawing No A123	Rev -