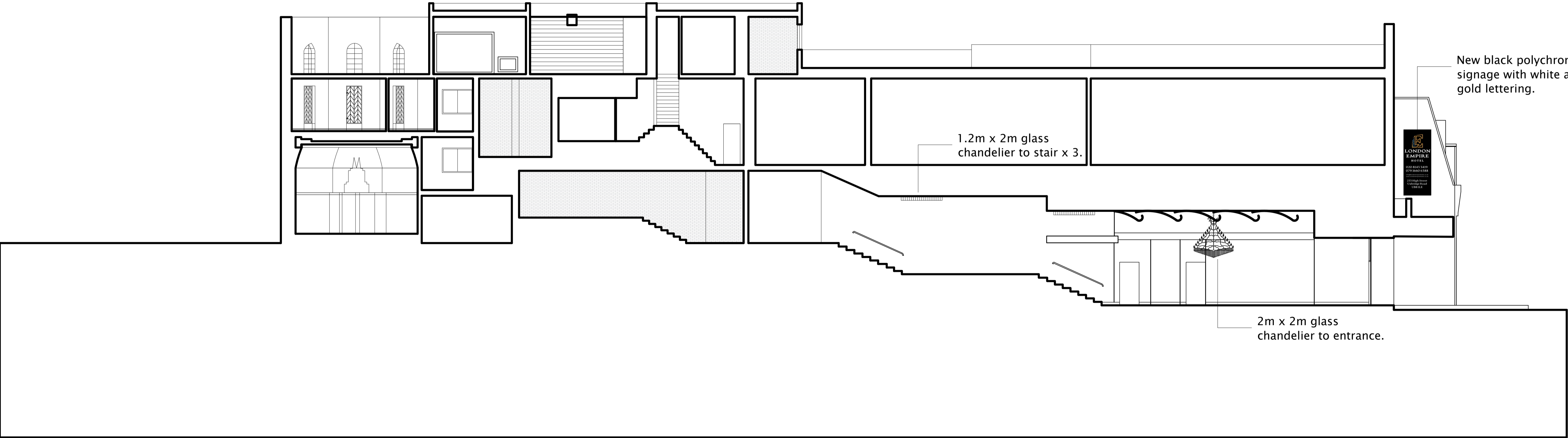
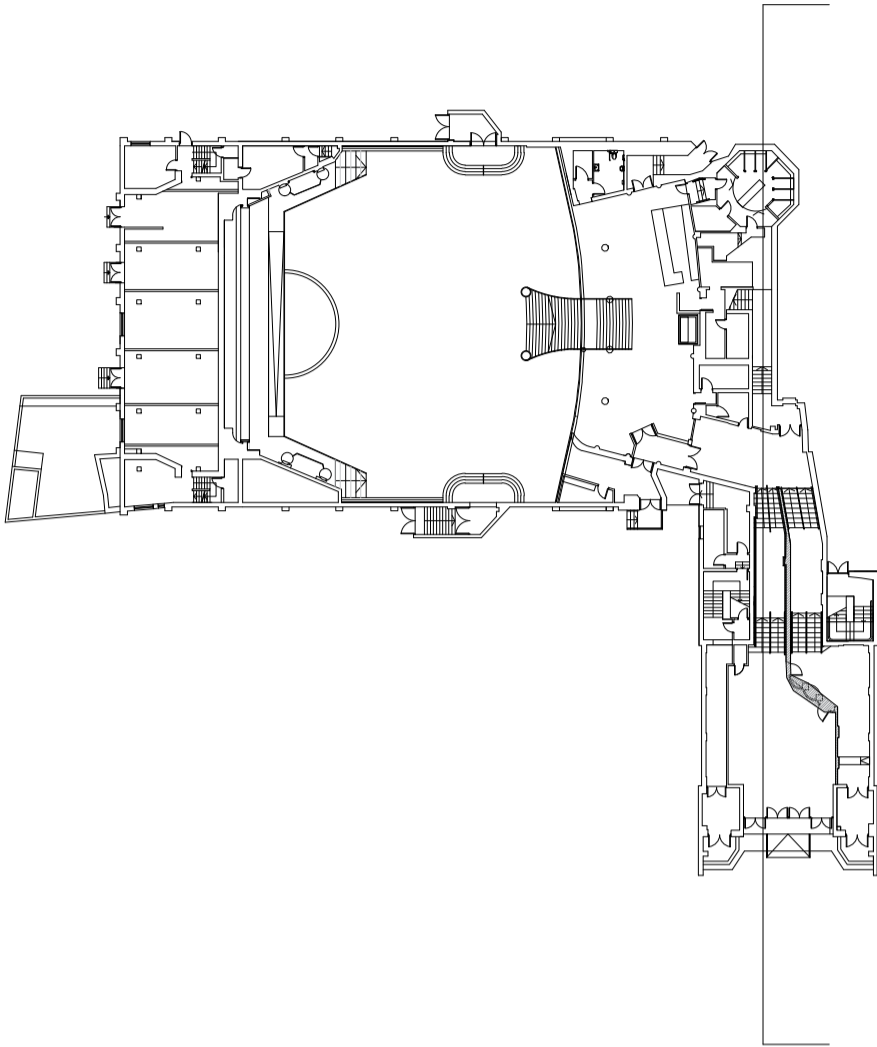


Proposed side elevation
for side signage



New black polychrome
signage with white and
gold lettering.

1.2m x 2m glass
chandelier to stair x 3.

2m x 2m glass
chandelier to entrance.

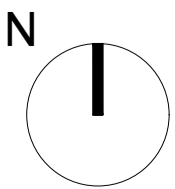
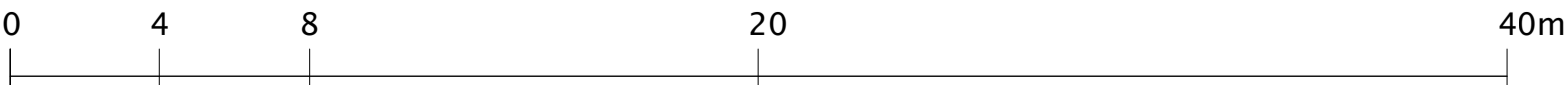
Nick Willson Architects

Second Home
68 Hanbury Street
London
E1 5JL
www.nickwillsonarchitects.com

Notes:

All dimensions to be confirmed by contractor on site.

Scale 1:200



Rev	Date	Description	By	Ck

Project 233 High Street, Uxbridge, London, UB8 1LD	Project description New signage and lighting	Scale 1:100@A1	Job No 0242
Title	Stage Listed building application	Drawing No A220	Rev —