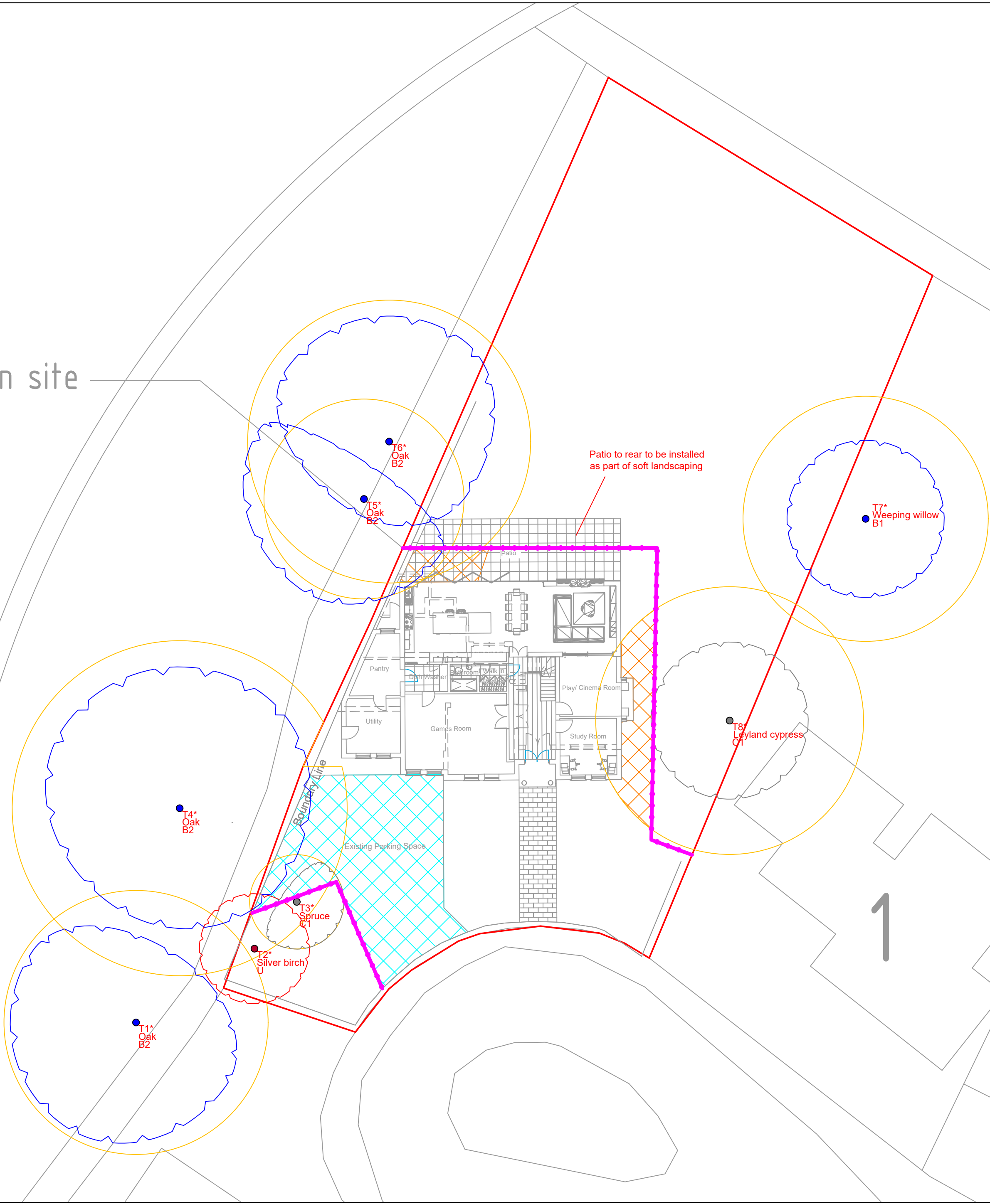


application site



Tree Protection Areas - Construction Exclusion Zones

INSTALLING PROTECTION Protective barriers and ground protection (as approved), must be installed before any materials or machinery are brought onto the site and before the commencement of any demolition, general site clearance, ground or construction works of any description.

RETENTION OF PROTECTION All protective measures must remain fully intact, vertical (in the case of barriers), in their approved locations from the outset of the development and maintained at all times until all works have been completed on site, including any earthworks and associated soft landscaping works. Any approved phasing of protective measures must be fully observed and complied with.

RESTRICTIONS Tree Protection Areas/Construction Exclusion Zones are to remain completely unobstructed for the duration of all development works. No construction activity of any description including, but not limited to the following, must occur within these areas at any time.

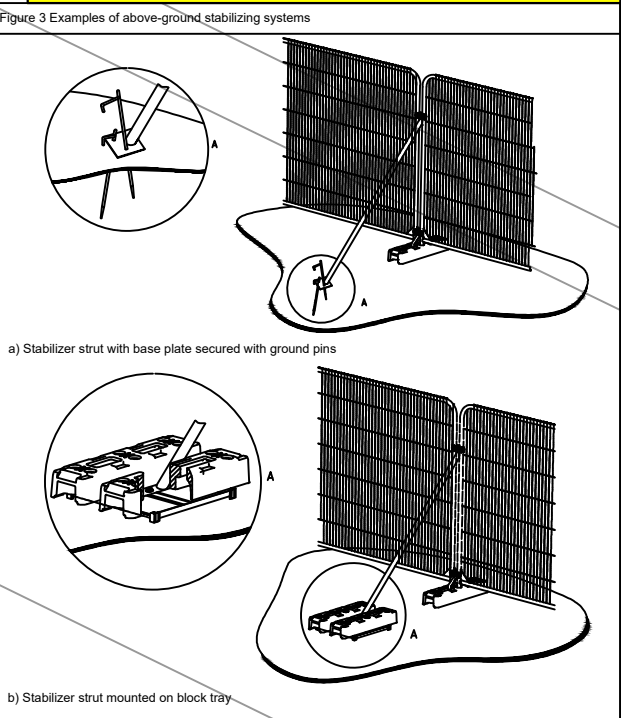
- No excavation of any description.
- No storage, disposal of soil, rubble or materials of any other description.
- No alterations to existing levels or ground conditions.
- No vehicular access, parking or use of any tracked or wheeled machinery of any description.
- No tree works without the written consent of the Council's Tree Service.
- No erection of temporary structures of any description.
- No fires.
- No storage disposal, handling or use of any chemicals including cement washings.
- No fixtures or fittings of any description - security lighting, signage, etc. shall be attached to any part of a tree.
- No fires shall be lit within 10 metres of the canopies of any tree or spread of any hedge.
- No chemicals, fuel, liquid/waste residues of any other description to be stored or disposed of within close proximity to, or drained towards, protection areas.

PROTECTION AREA SIGNAGE All weather notices as below, or similar, to be fixed to protective barriers at regular intervals (maximum spacing 5m) throughout site and maintained until completion of all development works.

PLANNING COMPLIANCE The protective measures detailed on this drawing are a legal requirement. Failure to protect the trees/hedges in full accordance with the approved scheme may lead to enforcement action being taken by the Local Authority.

All protection measures shall be routinely monitored by an appointed suitably qualified arboricultural advisor at 4 week intervals minimum for the duration of all works.

A signed copy of inspection report following each visit is to be sent to the Local Authority Planning Department.



GHAtrees
arboricultural consultancy

t: 07884 056 025
e: glen@ghatrees.co.uk
www.ghatrees.co.uk

Site: 2 Ebury Close, Northwood, HA6 2PF	1:200 @ A2
Drawing Title: Tree Protection Plan	June 2023

Key:

- Category A (Green dot)
- Category B (Blue dot)
- Category C (Grey dot)
- Category U (Red dot)
- Tree Protection Fencing (Red line)
- Temporary Ground Protection (Orange hatched area)
- Existing Hard Surfacing (Blue hatched area)

NOTE: Tree/group numbers marked with an * have approximate locations.

Category Legend: A diagram shows a tree with a blue dot (Category B) and a red dot (Category U). The tree is labeled '13 Birch B2'. The legend indicates: Crown Spread, Tree Number, Species, Category, Root Protection Area.