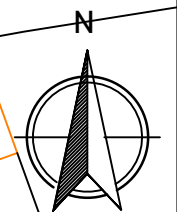
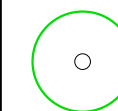


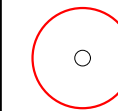
Tree Protection Plan



Plan Legend



Tree/s to be retained



Tree/s to be removed

Centre colours



Category A Tree



Category B Tree



Category C Tree



Category U Tree



Root Protection Area (RPA)
If amended, the original is a
dotted blue circle



Protective fencing



Construction & storage
exclusion zone



Proposed extension/s

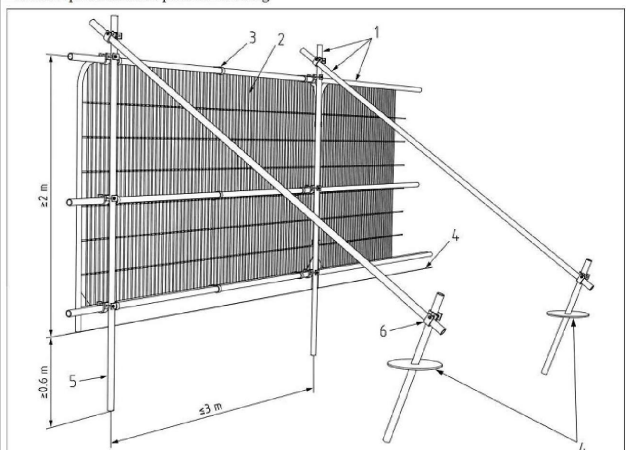


Existing hard surface

At this site, operations are to occur in the following sequence:

1. Erect protective fencing along the position(s) shown by the dashed red line/s on the TPP.
2. Commence construction.
3. Remove tree protection when all construction activity has ended.
4. Carry out landscaping works.

Default specification for protective fencing



Key	
-----	--

- 1 Standard scaffold poles
- 2 Heavy gauge 2 m tall galvanized tube and welded mesh infill panels
- 3 Panels secured to uprights and cross-members with wire ties
- 4 Ground level
- 5 Uprights driven into the ground until secure (minimum depth 0.6 m)
- 6 Standard scaffold clamps

NOTE: It might be possible to move the protective fencing slightly to provide more working / storage / office space, but this will need to be confirmed with the arboricultural consultant first. IF agreeable, suitable ground protection (details provided in the appendices) will need to be laid over the exposed RPAs.

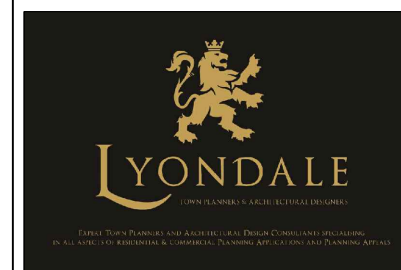
REMOVED - Consent granted

Proposed extension

• To be demolished

Scale: 1:200 @ A₃

Site Address: 93 Eastcote Road
Ruislip, HA4 8BG



LYONDALE PLANNING & DESIGN
CROWN HOUSE, HOME GARDENS
DARTFORD, KENT, DA1 1DZ