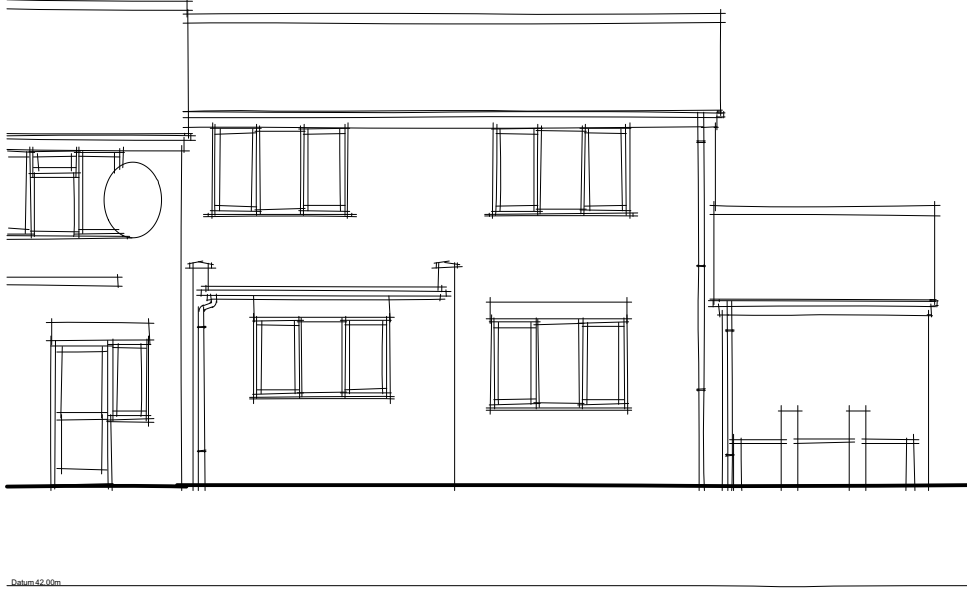
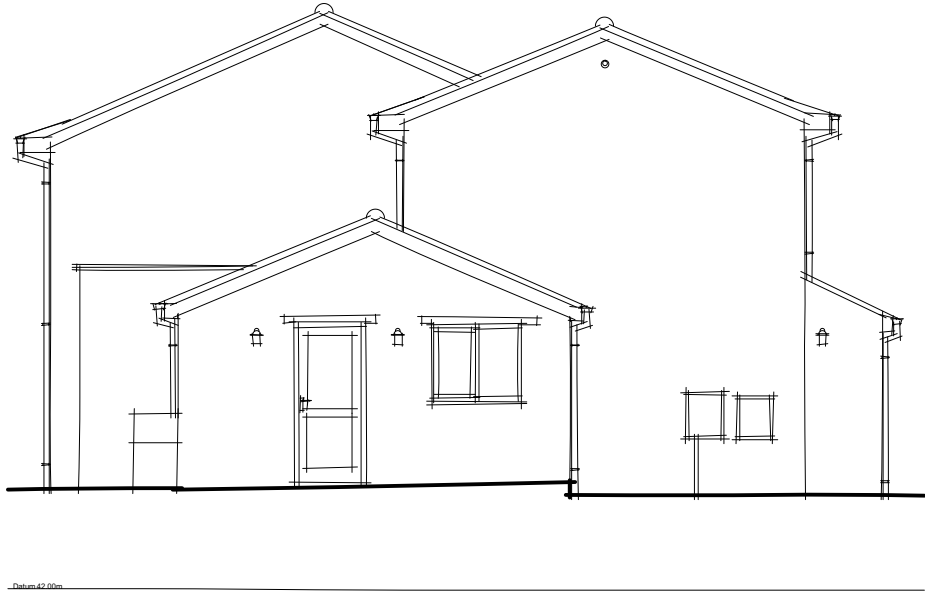




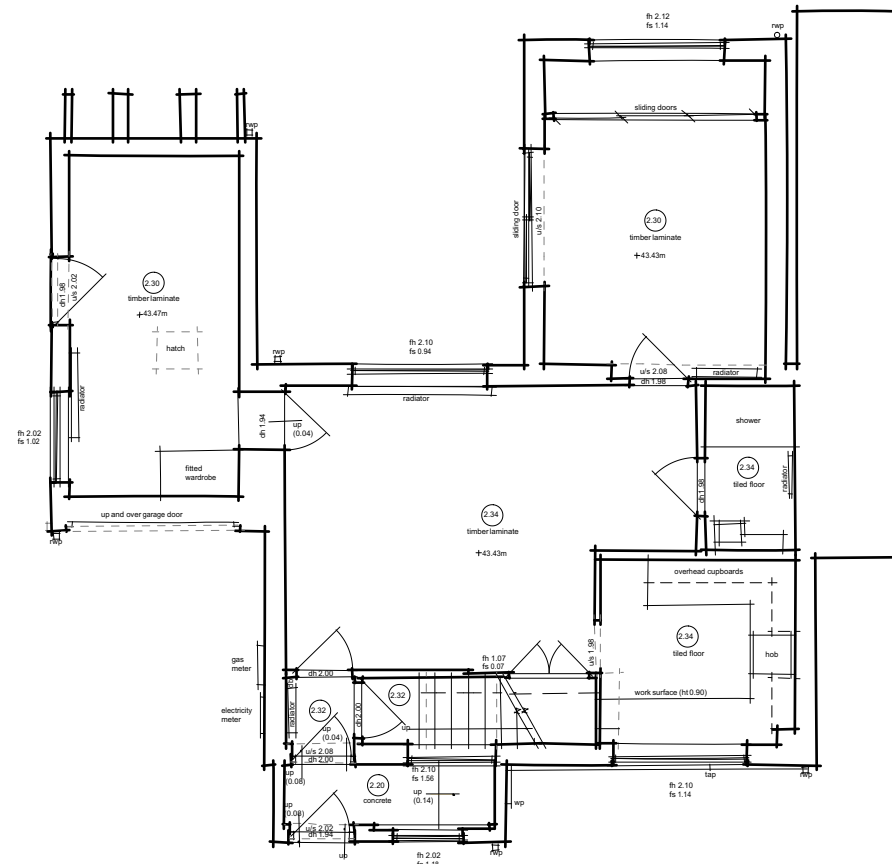
FRONT ELEVATION
Scale: 1:100



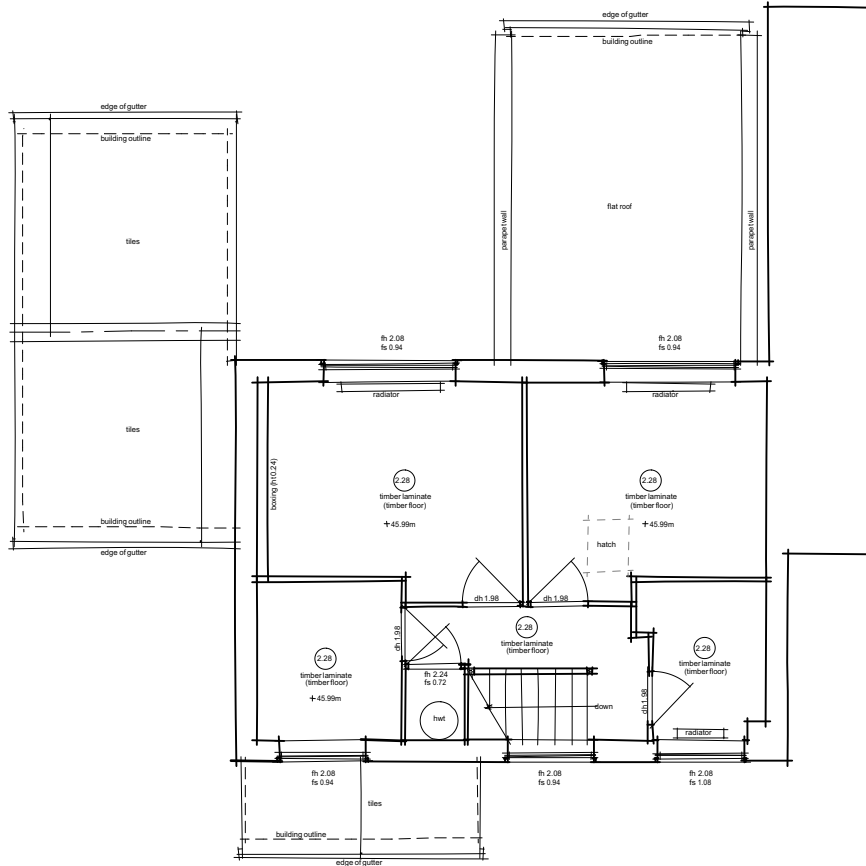
REAR ELEVATION
Scale: 1:100



NORTH WEST ELEVATION
Scale: 1:100



GROUND FLOOR PLAN
Scale: 1:100



FIRST FLOOR PLAN
Scale: 1:100

GIA (ground and first) 96.5 m²



No.	Date:	Revision Notes:	Initials:	Notes:	<div><div><div><div>dparchitects</div><div>design planning architecture</div></div><div><div><div><div>RIBA</div><div>Chartered Architect</div></div><div><div><div>CIAT</div><div>Chartered Institution of Architectural Technicians</div></div></div><div><div>DP Architects</div><div>The Old Brewery, Tap 3, Dorking Street, Wokingham, Oxfordshire, RG40 5BU</div><div>Tel: 01491 613 005 Email: mail@dparchitects.co.uk</div></div></div></div></div></div>	Client	Drawing		
						Project	EXISTING PLANS AND ELEVATIONS		
						<div>174 AYLHAM DRIVE, ICKENHAM, UB10 8UF</div>	Scale 1:100 @ A1	Dwg No. 19 BGAR EX02	Revision
							Drawn FT		
						Date 31/07/19	Status PLANNING		