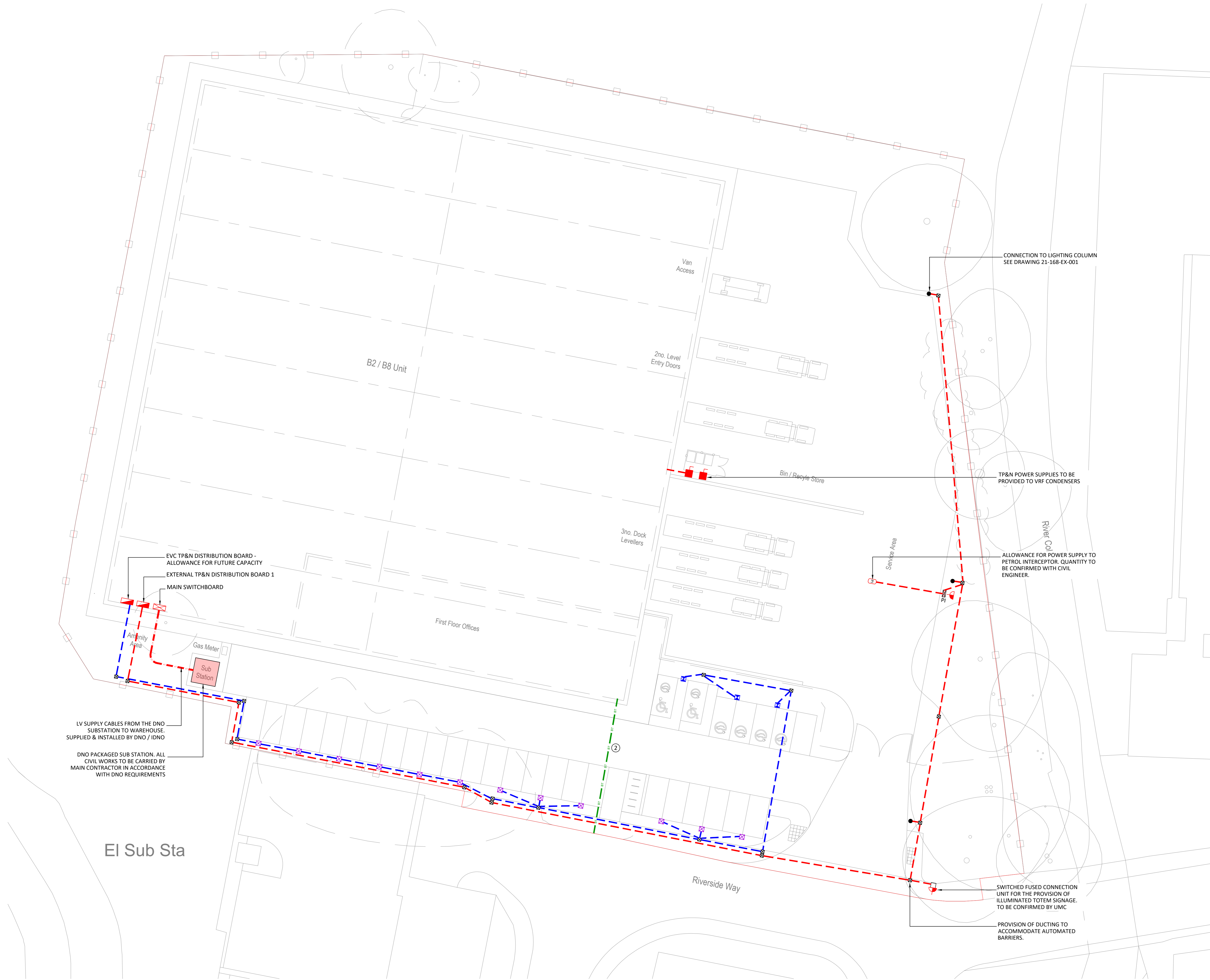


CDM DESIGNER RISK INFORMATION  
 IN ACCORDANCE WITH THE REGULATIONS NORMALLY  
 ASSOCIATED WITH THE TYPES OF WORK DETAILED  
 ON THIS DRAWING - NOTE THE FOLLOWING:  
 CONSTRUCTION  
 MAINTENANCE/CLEANING  
 DECOMMISSIONING/DEMOLITION

IF OTHER INFORMATION CAN BE FOUND ON  
 DESIGNER RISK ASSESSMENT NUMBERS  
 IT IS REQUESTED THAT ALL WORK BE CARRIED  
 OUT BY A CONTRACTOR COMPETENT UNDER EDM  
 2015 REFERRED TO AN APPROVED METHOD  
 STATEMENT

- Notes
- DO NOT SCALE THIS DRAWING.
  - ALL DIMENSIONS ARE IN MILLIMETERS UNLESS OTHERWISE STATED.
  - THIS DRAWING IS TO BE READ IN CONJUNCTION WITH ALL OTHER RELEVANT DRAWINGS AND SPECIFICATIONS.



- LEGEND
- LV CABLE
  - Ø100 DUCT FOR LIGHTING/LV POWER
  - Ø150 DUCT FOR ELECTRIC VEHICLE CHARGING
  - Ø100 DUCTS FOR COMMS
  - ⊠ UNIT MAIN LV PANEL & METER CUT-OUT
  - ▭ DISTRIBUTION BOARD
  - LIGHTING COLUMN
  - ⊞ DRAWPIT
  - ⊞ ELECTRIC CHARGING PEDESTAL
  - ⊞ FUTURE ELECTRIC CHARGING PEDESTAL PROVISION
  - ① DENOTES NUMBER OF DUCTS

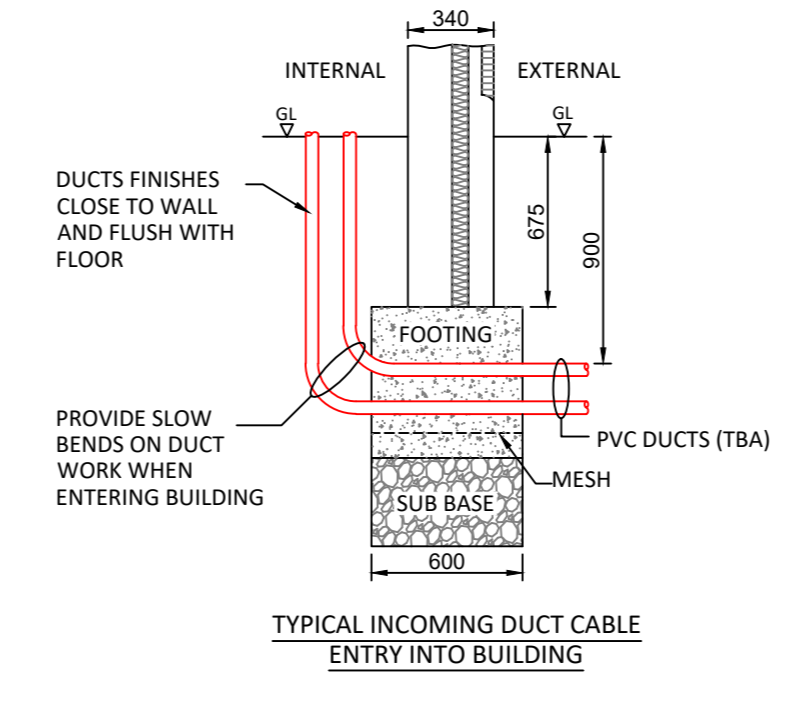
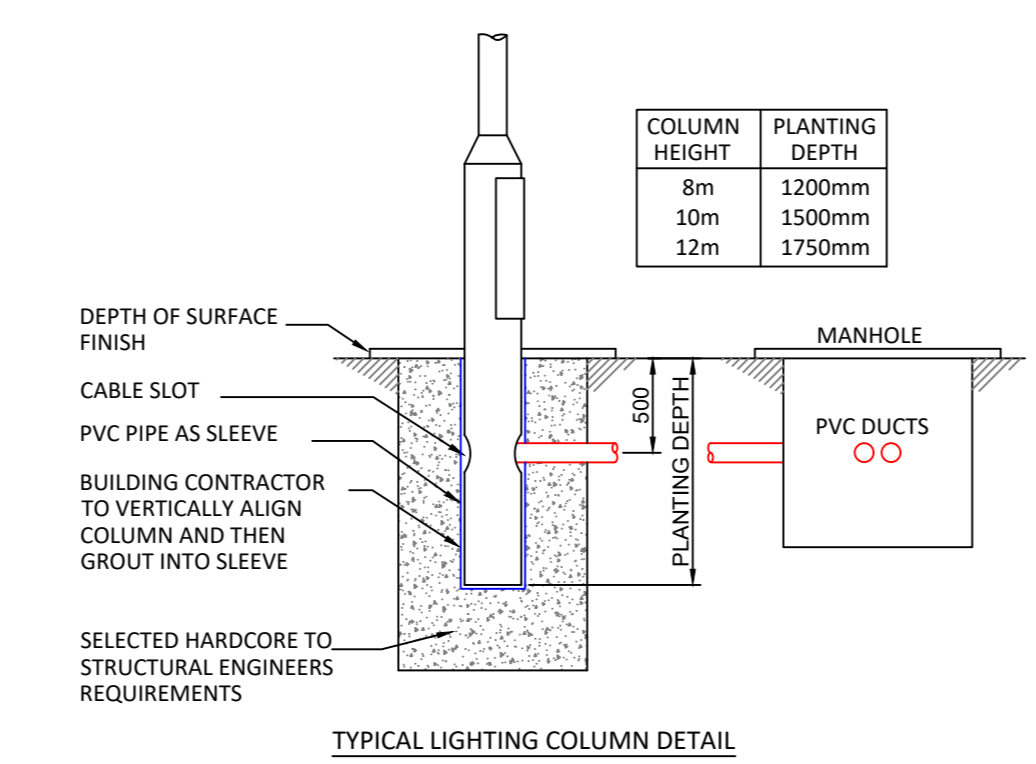
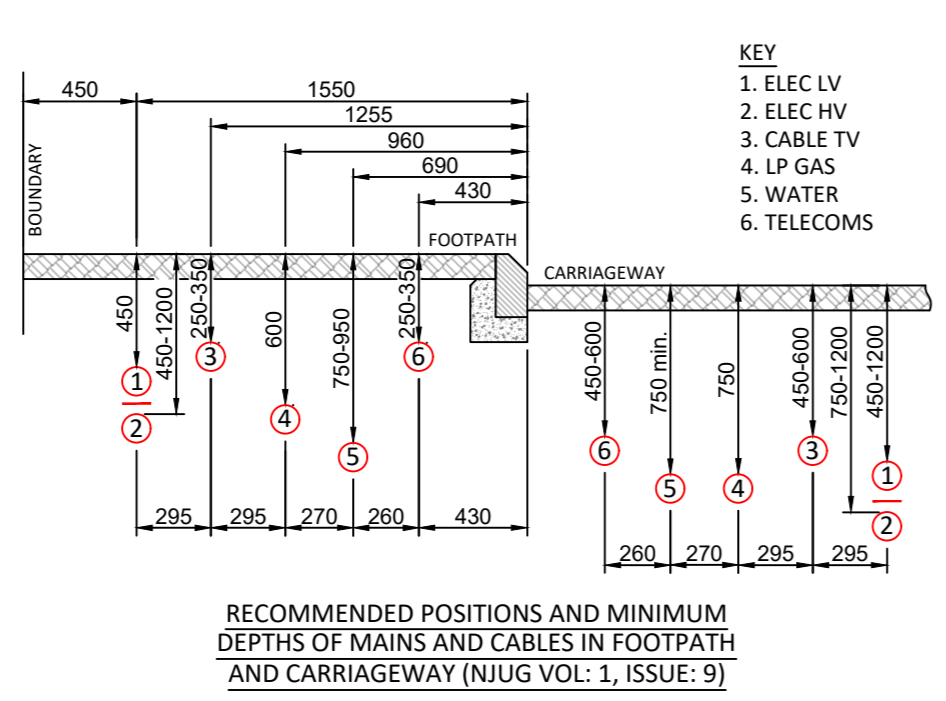


TYPICAL ELECTRIC CHARGING PEDESTAL WITH DUAL 16A SINGLE PHASE CHARGING SOCKETS, ON/OFF CONTROL KEYSWITCH REQUIRED

LV SUPPLY CABLES FROM THE DNO SUBSTATION TO WAREHOUSE, SUPPLIED & INSTALLED BY DNO / IDNO

DNO PACKAGED SUB STATION: ALL CIVIL WORKS TO BE CARRIED BY MAIN CONTRACTOR IN ACCORDANCE WITH DNO REQUIREMENTS

EI Sub Sta



T1 17.12.21 TENDER ISSUE  
 REV: DATE AMENDMENTS APPR'D:

**mba**  
 CONSULTING ENGINEERS

CLIENT: **BRIDGE**

PROJECT: RIVERSIDE WAY UXBRIDGE

TITLE: INDICATIVE EXTERNAL ELECTRICAL SERVICES LAYOUT

DRAWING NUMBER: 21-168-EX-003

REV: T1 STATUS: TENDER DESIGNED BY: MM

SCALE: 1:200 @A0 DATE: DEC 2021 DRAWN BY: MM