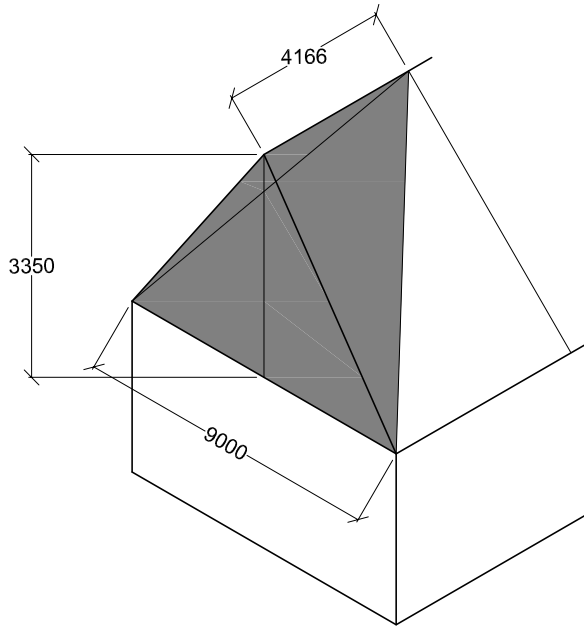


ROOF VOLUME CALCULATIONS

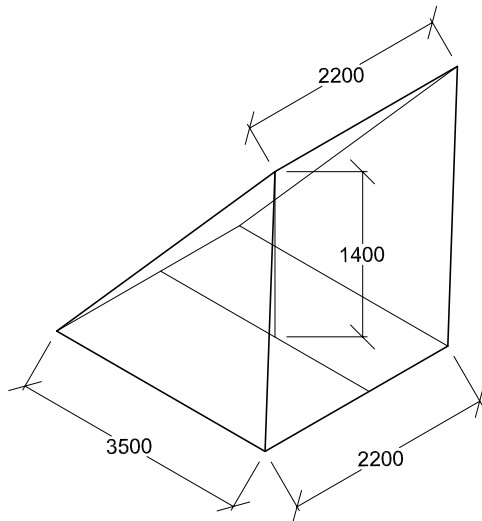


2 x PROPOSED HIP TO
GABLE CONVERSIONs

$$21\text{m}^3 \times 2 = 42\text{m}^3$$

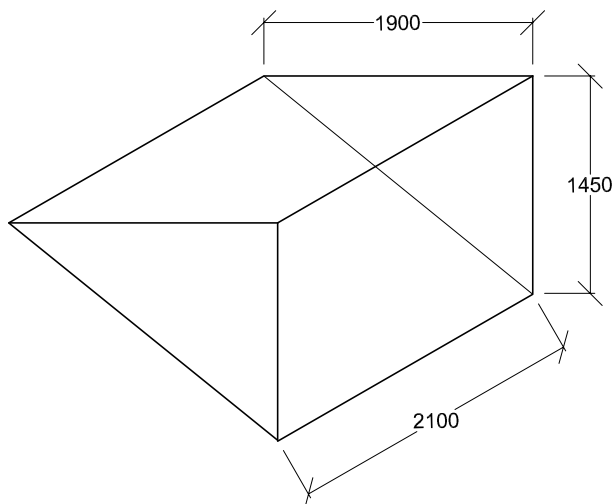
DEDUCT CROWN ROOF
SECTION AND 2 x HALF-HIP
ENDS ($2\text{m}^3 + 1.5\text{m}^3 = 3.5\text{m}^3$)

$$42\text{m}^3 - 3.5\text{m}^3 = 38.5\text{m}^3$$



VOLUME OF EXISTING
FRONT ROOF EXTENSION
TO BE INCLUDED

$$5.5\text{m}^3$$



2 x PROPOSED REAR
DORMER WINDOWS

$$2.89\text{m}^3 \times 2 = 5.78\text{m}^3$$

TOTAL VOLUME

$$49.78\text{m}^3$$