

# Stanford Close, Ruislip, HA4 7RP

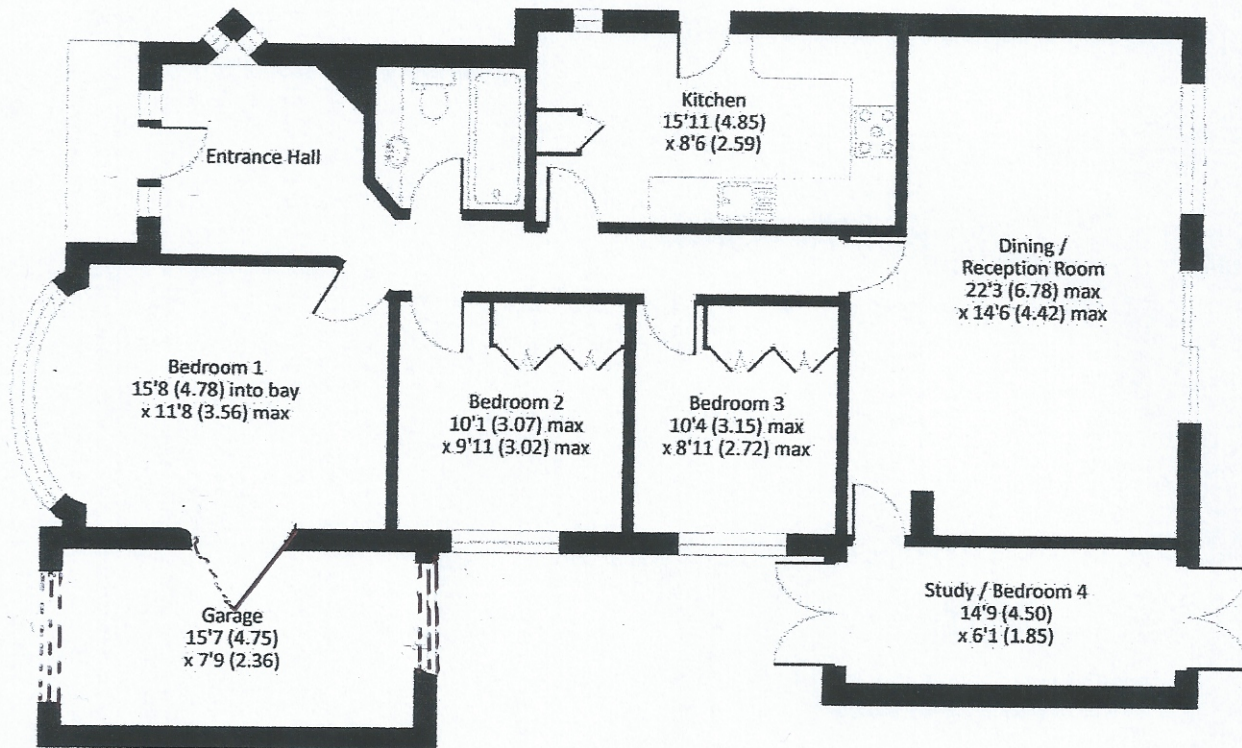
Main house gross internal area = 1136 sq ft / 105.5 sq m

Garage gross internal area = 122 sq ft / 11.3 sq m

Total gross internal area = 1258 sq ft / 116.9 sq m



After work completed  
Chimney to be removed.



GROUND FLOOR

Whilst every attempt has been made to ensure the accuracy of the floor plan contained here, measurements of doors, windows and rooms are approximate and no responsibility is taken for any error, omission or misstatement. These plans are for representation purposes only as defined by RICS Code of Measuring Practice and should not be used as such by any prospective purchaser. Specifically no guarantee is given on the total square footage of the property if quoted on this plan. Any figure given is for initial guidance only and should not be relied on as a basis of valuation.  
© 2019 nichecom.co.uk | Produced for Gibbs Gillespie | Drawing No 556351