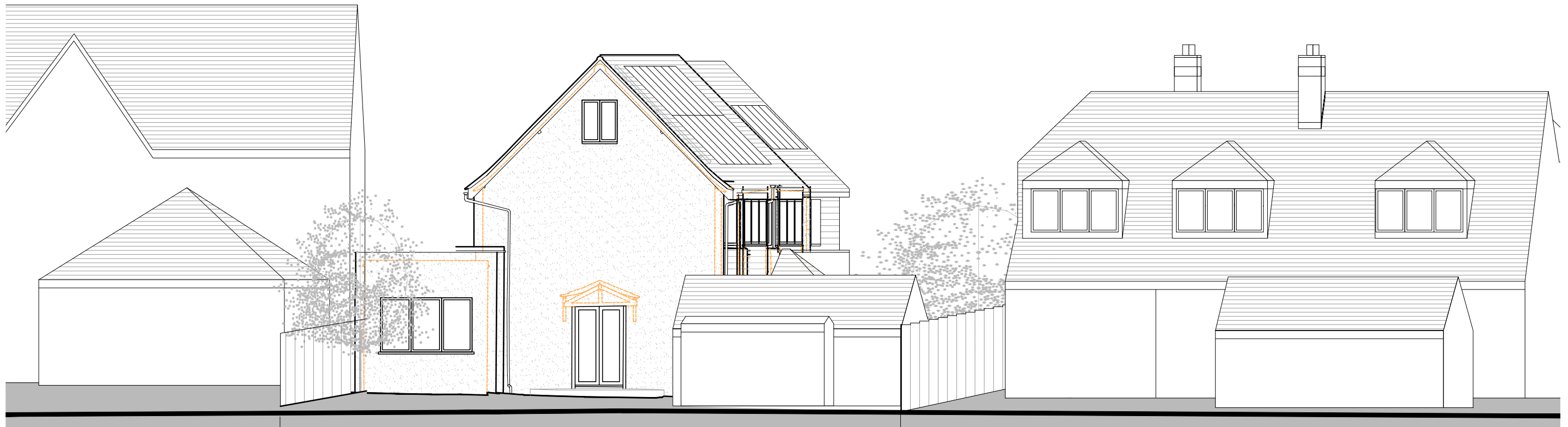




1

Existing street elevation

Existing development at No. 90 Vine lane



2

Proposed street elevation

Proposed development at No. 90 Vine lane

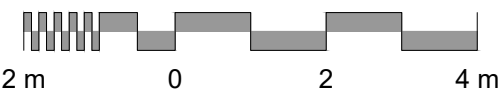
#### CDM regulations 2015

For *notifiable projects* the building contractor must produce a Construction Phase Plan, which will include :- a statement of methods of construction, hazards, risks and how the works are to be controlled.

A *notifiable project* is defined as works that are 30 working days long, with 20 workers at any point in the project or exceeds 500 working person days - this includes domestic projects.

To be read in conjunction with all CDM and HSE regulations.

Scale 1:100



REV.	DATE	NOTES	BY	CHECKED	PROJECT	DRAWING TITLE		
0	28/11/22	First issue	AC	AB	90 Vine Lane, Uxbridge UB10 0BE	JOB NO.	DWG. NO.	STATUS
A	21/03/23	Drawing status changed	AC	AB		E3743	021	Planning
					CLIENT	SCALE	DWG. SIZE	REV.
					Jonathan Dilworth	As shown	A3	A
					DWG INFORMATION	NOTES		
					X:\Jobs\E3743 90 Vine Lane, Uxbridge\3.0 Drawings\3.2 Drawing Sheets\E3743 Street elevations.dwg	Do not scale from this drawing except for the purposes of planning. Only use figured dimensions. All dimensions to be checked on site, before work commences. Any discrepancies should be reported to the architect / contract administrator. COPYRIGHT © This drawing is copyright and issued to you in confidence. It must not be copied, used or disclosed, in whole or in part to third parties. It remains the property of eco design consultants		

**eco**design  
consultants  
Architects & Environmental Consultants

South Pavilion, MK Art Centre, Parklands,  
Great Linford, Milton Keynes, MK14 5DZ  
T: 01908 886854  
E: [studio@ecodesignconsultants.co.uk](mailto:studio@ecodesignconsultants.co.uk)  
W: [www.ecodesignconsultants.co.uk](http://www.ecodesignconsultants.co.uk)