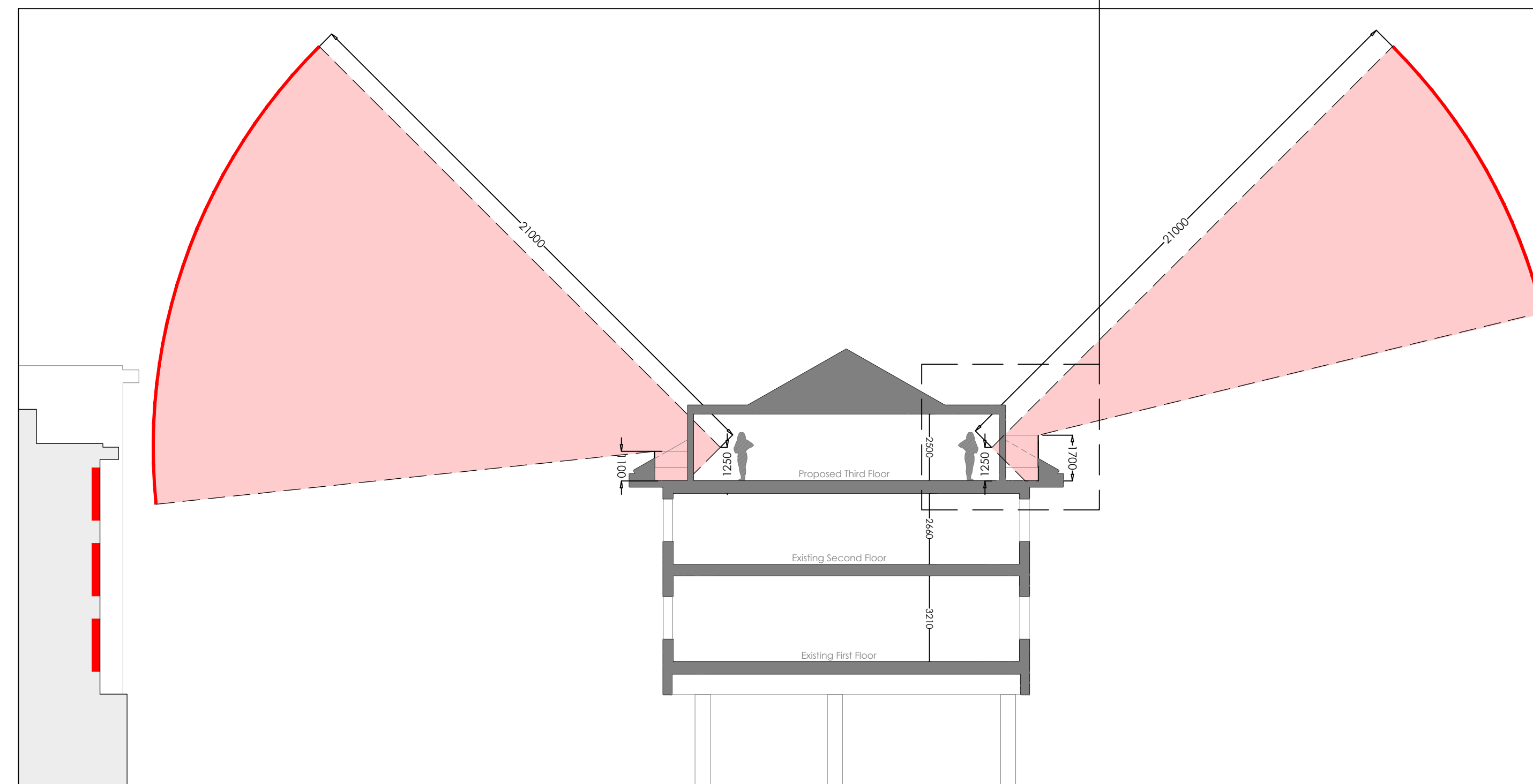


St Matthews Church of England



PROPOSED THIRD FLOOR SECTION
OVERLOOKING FROM WINDOWS OF
HABITABLE ROOMS

The proposal is in accordance with Hillingdon Design and Accessibility Statement (HDAS) Supplementary Planning Document policy no. 4.12

Adequate distance should be maintained to any area from which overlooking may occur and regard should be given to the character of the area and the distances between buildings. As a guide, the distance should not be less than 21m, between facing habitable room windows.

Between the 'habitable room windows' there is a minimum of 21m.

Proposed fixed privacy screening

Issue for PLANNING	18.01.23	/
DETAILS	DATE	REVISION

PROPOSED GA

Revision: /	712-P-204
1:150@A1	JAN 2023
Drawn by: NH	Checked by: NL

92-98 LOWER MORTLAKE ROAD
RICHMOND UPON THAMES
TW9 2JG

TEL +44 (0)20 8614 7950
FAX +44 (0)20 8614 7969
WEB www.quadprojects.com

COUAD