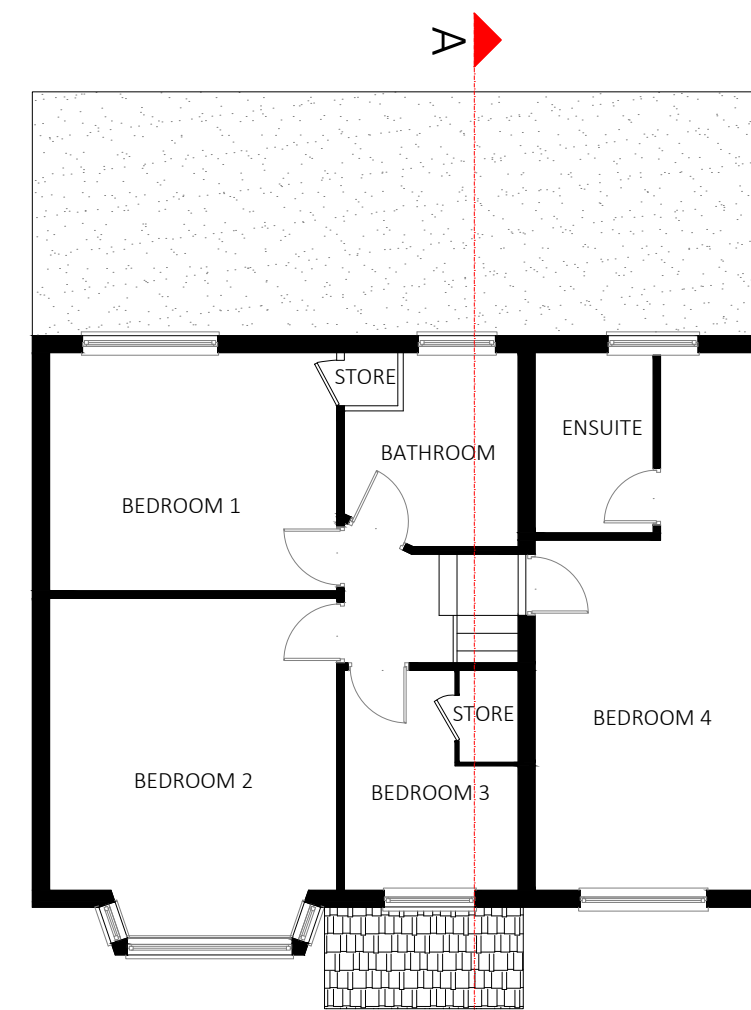
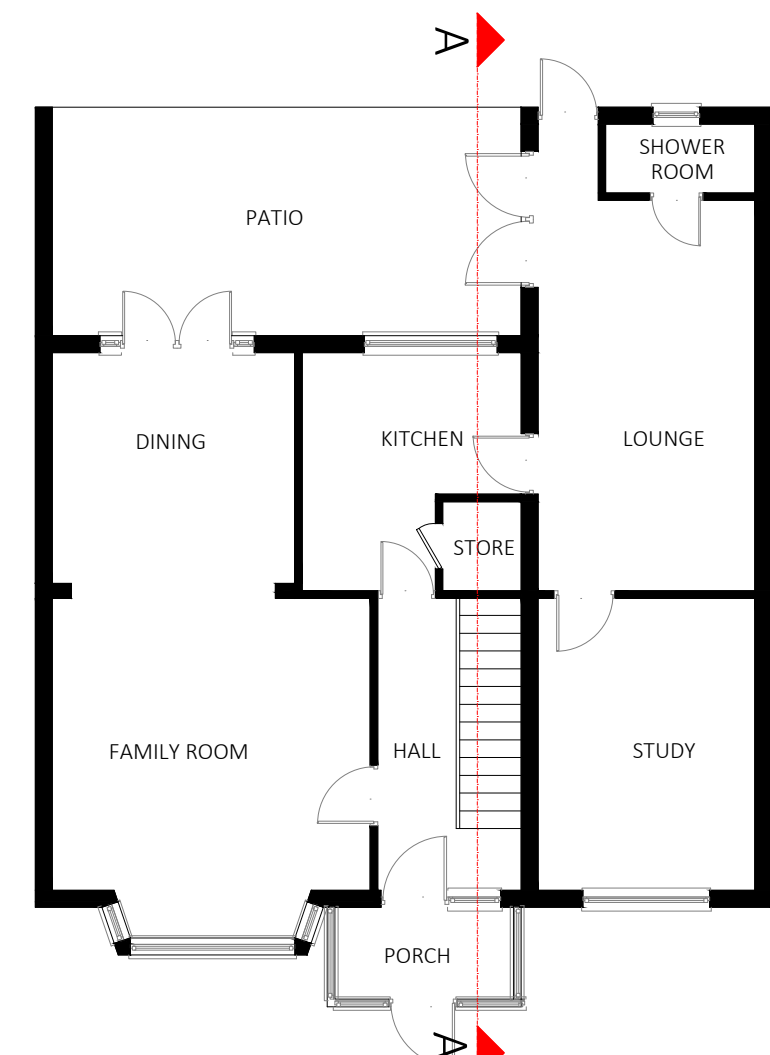
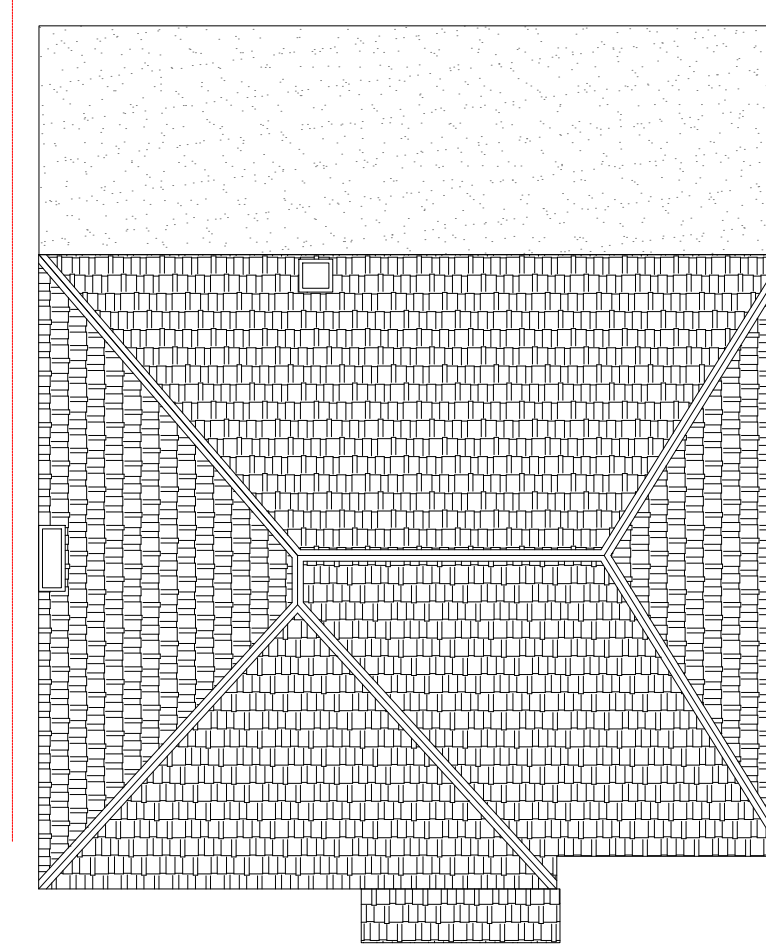


A line drawing of a two-story house. The house has a gabled roof with a chimney on the right side. The front facade features a large window on the left, a central entrance with a small porch, and a staircase leading to the second floor. The drawing is simple, using black outlines on a white background.

Floor plan of the second floor. It features two rectangular rooms labeled "STORAGE" and one larger rectangular room labeled "GAMES ROOM". The "STORAGE" rooms are located on the left side, and the "GAMES ROOM" is on the right. There are several doorways and alcoves indicated by lines and small rectangular symbols.



The diagram shows a 2D hexagonal lattice of atoms, represented by solid black circles. A central atom is highlighted with a larger, thicker border. A dashed line connects this central atom to one of its nearest neighbors. The lattice is bounded by a solid black line on the top and right, and a dashed line on the bottom and left.



A detailed architectural line drawing of a two-story brick house. The house features a gabled roof with a chimney on the left side. The front facade has a central entrance with a small porch, flanked by windows. The second story has three windows, and the first story has a large multi-paned window on the left and a smaller one on the right. The drawing is a black and white line art illustration.

This architectural drawing shows a side elevation of a building. The main structure is a two-story brick wall. On the left, there is a chimney with a gabled roof. The main roof is also gabled and covered with shingles. A small, flat-roofed section extends from the right side of the main wall. The drawing uses hatching to represent brickwork and shingles.

REVISIONS			
DATE: 22-06-2023			DRAWN BY: MH
SCALE: 1:100, 1:500, 1:1250 @ A1			CHECKED BY:
DRAWING TITLE: PLANNING			DRAWING NUMBER: MH.1A.2023.A