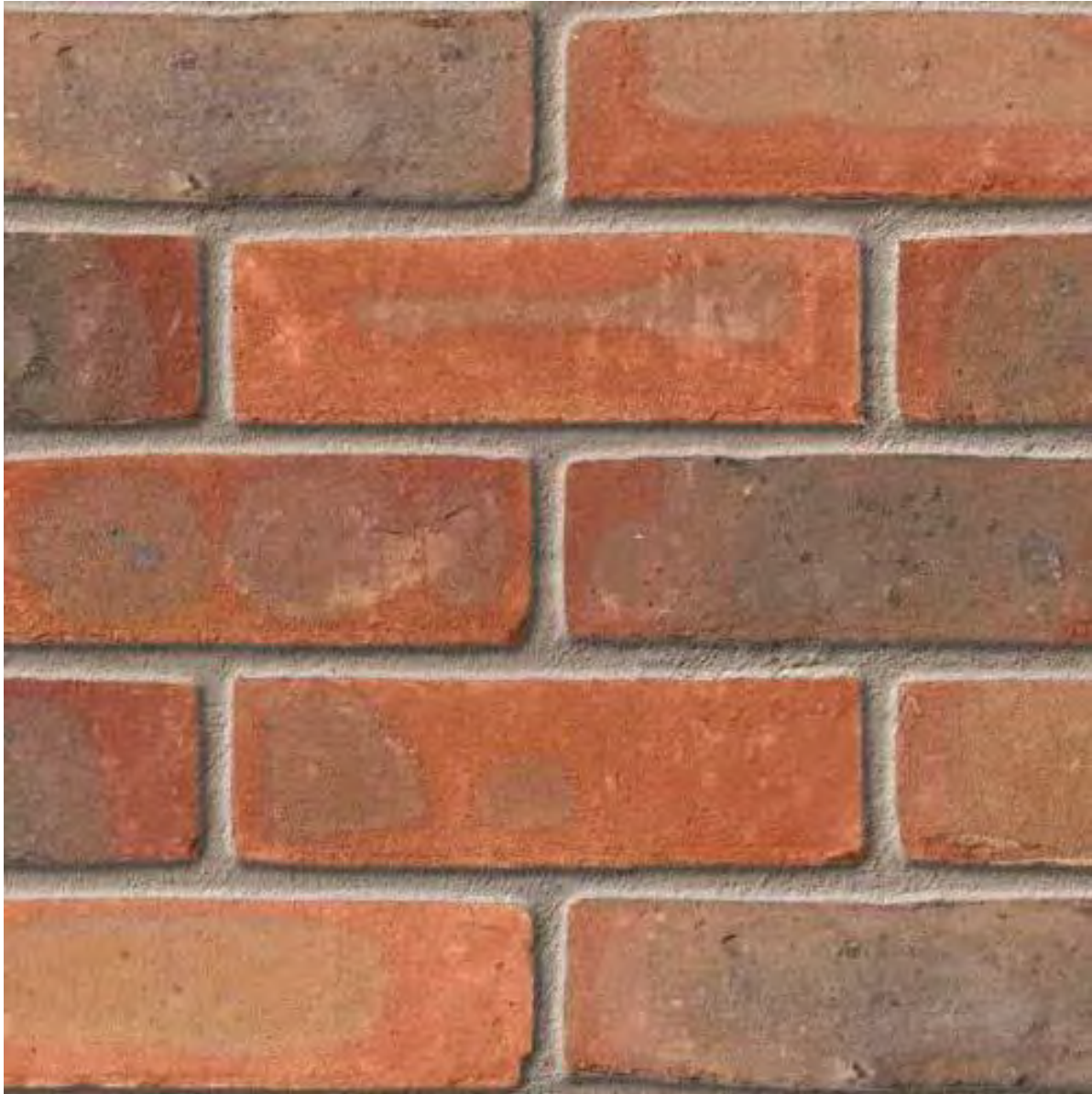


# 118 High Street Northwood HA6 1BJ

Proposed facing brick:

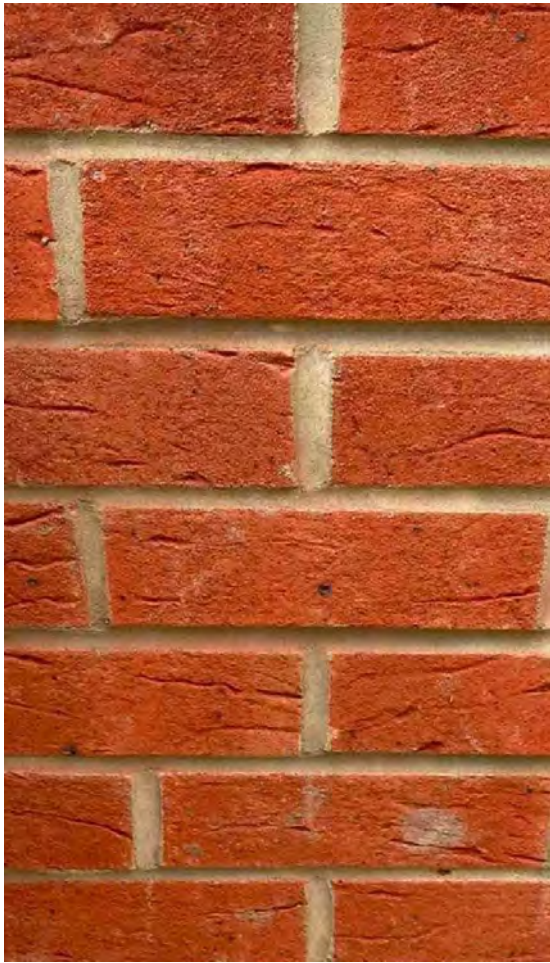
IBSTOCK HAMSEY MIXED STOCK FACING BRICK



Manufacturer's Details: <http://www.ibstockbrick.co.uk/brick-selector/?p=A4517A> Technical Data Sheet attached.

Samples are available for inspection on site

Flemish Bond Pattern is only proposed on the side wall to Emmanuel Road. The rear wall and side wall to 116 High Street will have stretcher bond.



Sample panel on site August 2022

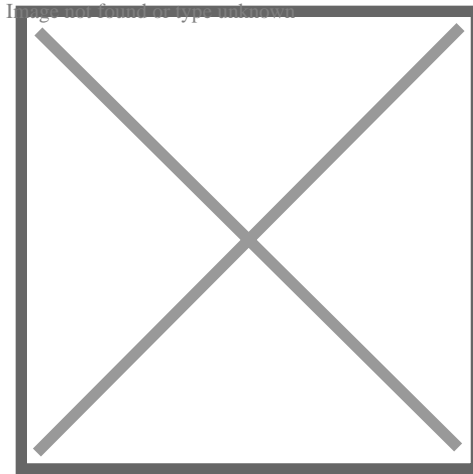
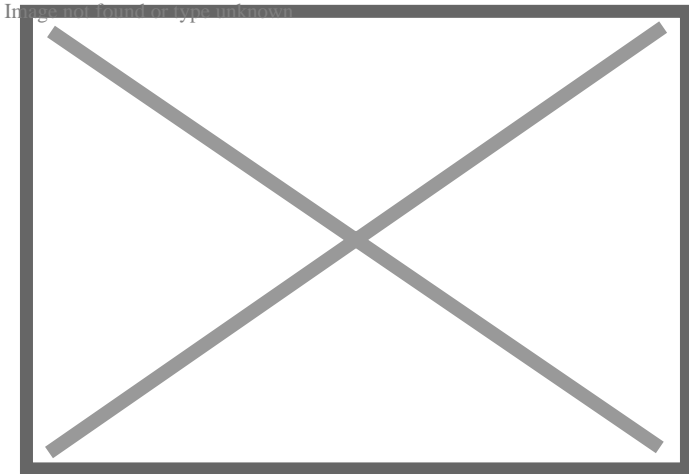


Pallet on site August 2022 showing approved brick

# Hamsey Mixed Stock



**Ibstock**  
At the heart of building



## Product Information

Ibstock Code:	4517
Type:	Stock
Facing Description:	Sandfaced
Dry Brick Weight (kg):	2.2kg
Pack Quantity:	370
Packaging (standard):	Banded (plastic)
Factory:	Chailey

## Technical Specification (to BS EN 771-1)

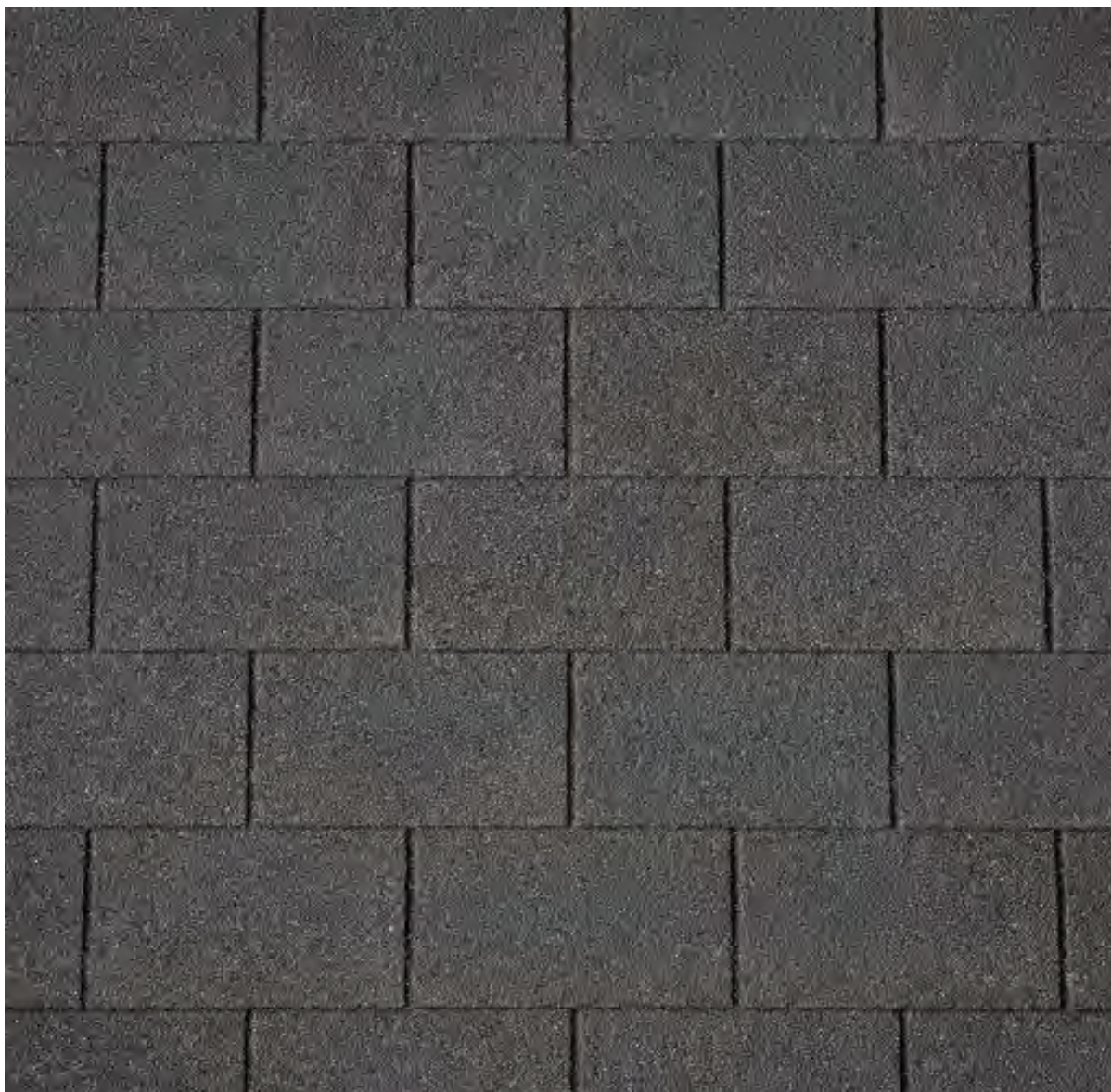
Brick Dimensions (L x W x H mm):	215x102x65
Size Tolerances Mean & Range:	T1 R1
Configuration:	Single Frog
Voids (%):	5-10
Compressive Strength (N/mm <sup>2</sup> ):	12.5
Active Soluble Salts:	S2
Water Absorption (% weight):	12
Durability:	F2
Gross Dry Density (Sound Insulation) (Kg/m <sup>3</sup> ):	1560
Equivalent Thermal Conductivity "K" value 5% Exposed:	Refer to Ibstock
Initial Rate of Absorption (Suction Rate) (Kg/m <sup>2</sup> /min):	Refer to Ibstock
EAN:	5036335031087



# 118 High Street Northwood HA6 1BJ

Proposed Roof Covering:

IKO Armourglass Plus Square Butt Roof Shingles



Manufacturer's Details:

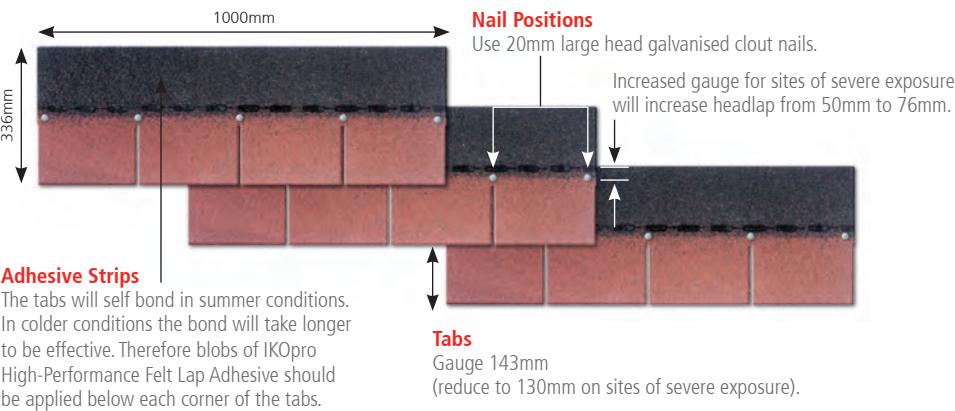
<https://ikogroup.co.uk/product/iko-armourglass-plus-square-butt-shingle-2/>

Technical Data Sheet attached.

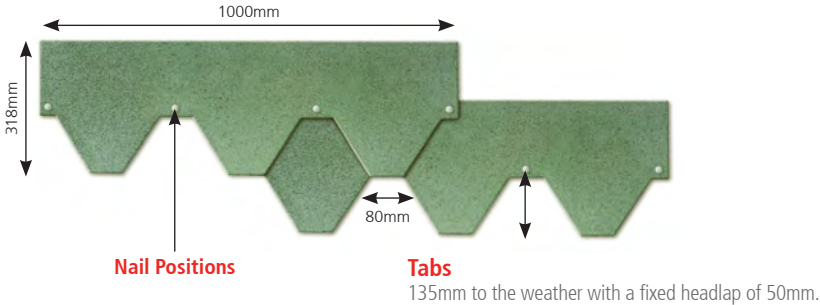
Sample is available for inspection on site

# Product Range

## IKO Armourglass Plus Square Butt Roofing Shingles



## IKO Armourshield Plus Hexagonal Roofing Shingles



IKO Roofing Shingles	Pack Contents		Strips		
	Roof area coverage (max)	Number of strips	Length	Width	Tabs
IKO Armourglass Plus Square Butt	2.0m <sup>2</sup>	14	1m	336mm	4
IKO Armourshield Plus Hexagonal	2.0m <sup>2</sup>	15	1m	318mm	3
IKOpro High-Performance Felt Lap Adhesive	Cartridge size 310ml - Allow 1 1/2 cartridges per pack of shingles to cover nail heads. Where sites are subject to severe exposure, allow an additional 2 cartridges per pack of square butt shingles for the blobs of adhesive at the corners tabs				
IKOpro High-Performance Roofing Felt Adhesive	IKOpro High-Performance Roofing Felt Adhesive: 1, 2.5, 5 and 25 litre tins Fully bonding coverage (for bonding IKO Glass Fibre Underlay 20m (Type 3B) at valley shingles), allow 5 litres per 8m <sup>2</sup>				
	Roll Length	Roll Width	Roll Weight		
IKO Glass Fibre Underlay (Type 3B)	20m	1m	36kg		

# Additional Information

## Roof Ventilation

When IKO Roofing Shingles are used on heated buildings or insulated roofs, ventilation of the void space must be provided. For cold roofs ventilation should be at least equal to continuous strip 10mm wide (Ref: BS 5250:2011).

## Additional Weather Considerations

Whilst IKO Roofing Shingles are designed for application on pitched roofs between 15° and 85°, in severe exposed locations it is recommended that the roof pitch should be a minimum of 30. Exposure categories as defined in BS5628: Part 3.

## Building Regulations

IKO Armourglass Plus and Armourshield IKO Roofing Shingles comply with Building Regulations: England, Wales, Scotland and Northern Ireland. However, they must be installed in accordance with BS 5534: 2014 Code of Practice for Slating and Tiling (including Shingles). Contact IKO Technical Services for guidance.

## Suitable Decking

The following decking materials are suitable for the fixing of roof shingles.

- Exterior grade plywood (18mm)
- OSB 3 Conditioned Boarding (18mm)
- Plain edge timber boarding (25mm)

Note: Chipboard (including pre-felted) is not recommended as decking.

## Storage

Store shingles inside a ventilated area. Do not stack Square Butt Shingles more than 16 packs high and Hexagonal Shingles more than 14 packs high. Pallet loads must not be stacked directly upon each other.

Store away from direct heat and sunlight.

In cold weather, store packs inside before use and gently warm before folding.

A roofing shingle pack weighs between 28.5kg and 32.4kg depending on the product type. The usual precautions should be taken when handling heavy objects.

## Handling

Handle Roofing Shingle strips carefully in cold weather to prevent cracking or breaking, and in hot weather to protect edges. Do not drop packs on their edges.

## Fixing

To improve adhesion of the shingles strips, the IKO Armourglass Plus Square Butt Shingles have a heat sensitive bituminous strip on the top side. The Armourshield Hexagonal Shingles have an adhesive surface on the reverse of each tab, protected with a removable film.

## IKO Armourglass Plus Square Butt Roofing Shingles

The polythene film strip on the back of the Square Butt Shingles prevents them sticking together during transit and storage. Do not attempt to remove the film.

## IKO Armourshield Plus Hexagonal Roofing Shingles

The release sheet must be removed from the back of the Hexagonal Shingles.

## IKO Roofing Shingles Colour Selector

### Square Butt Shingles

IKO Armourglass Plus  
**Amazon Green**

IKO Armourglass Plus  
**Tile Red**

IKO Armourglass Plus  
**Slate Grey**

IKO Armourglass Plus  
**Dual Brown**

IKO Armourglass Plus  
**Black**



### Hexagonal Shingles

IKO Armourshield  
**Amazon Green**

IKO Armourshield  
**Granite Grey**

IKO Armourshield  
**Dual Brown**

IKO Armourshield  
**Black**

