

Photo Sample of Paving



Hard permeable and porous surface  
A Hard surfacing which allows water to soak into it, will be built with porous asphalt.  
Porous concrete blocks or clay block permeable paving.  
The material will have open voids across the surface of the material or around the edges of blocks that allow water to soak in.  
The surface is constructed over a permeable sub-base.

Photo Sample Bicycle Rack



Bike Rack x 2 to be secured to bike store wall  
In secured bike store giving a total of 4 x bike spaces.

### 3. Details of Landscape Maintenance

- A: The freeholder of the site will employ a landscape contractor to visit and maintain monthly the soft and hard Landscape for a minimum period of 5 years, to ensure all new planting is able to thrive.
- B: There will not be no loose or need to replace any existing tree, shrub, or area of surfing/seeding within the landscaping  
Grass to be retained. If Damaged during building process. New Grass will be laid to replace, and maintained by contractor.

- 5.a There will be no functional services above and below ground other than ones mentioned already on the this plan
- 6.b Proposed finishing levels or contours - Please see Cross Section

Elevation of fencing

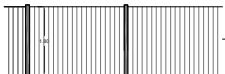


Photo Sample of Fencing



## Ground Floor

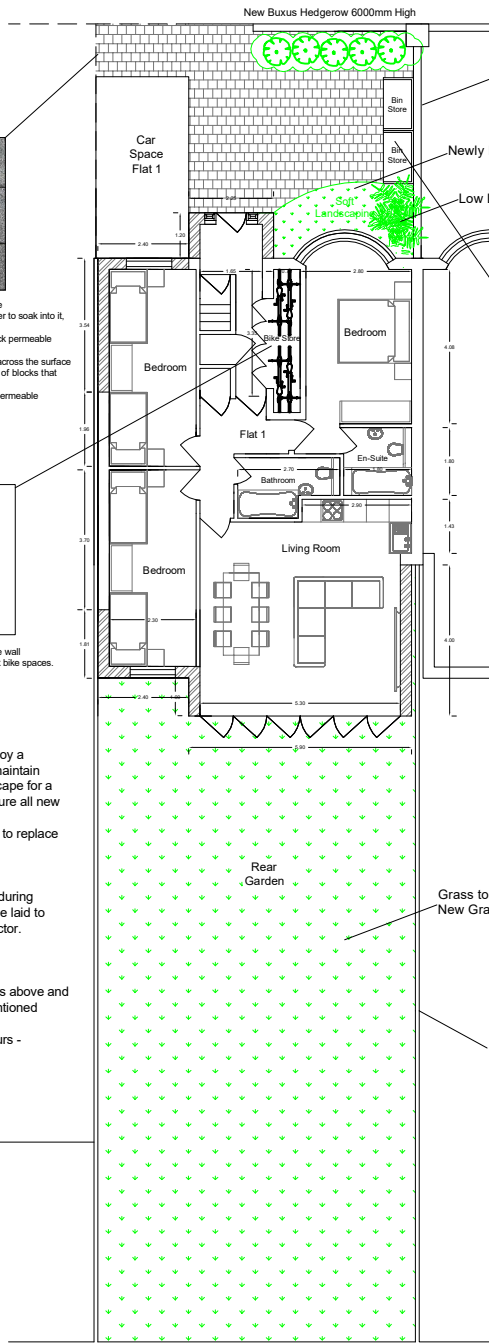


Photo Sample of Fencing



Elevation of fencing



Elevation of Bin Storage

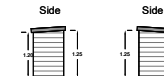
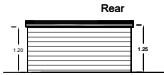
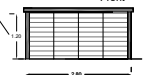


Photo Sample of Bin Store



Elevation of fencing

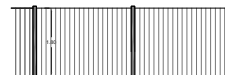
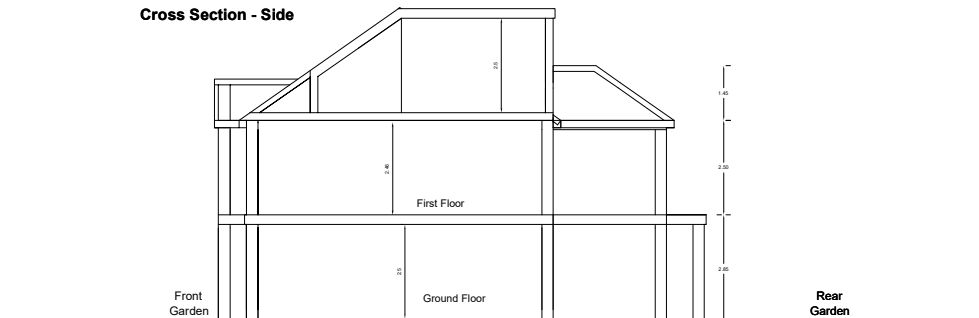


Photo Sample of Fencing



## Cross Section - Side



## NOTES:

### Block Plan



#### Contacts:

Tel: 07976 928 789

E-Mail: joel.gray@greatplans.co.uk

#### Client:

#### Location:

14 Clammas Way  
Uxbridge  
UB8 3AN

Scale: 1:100 @ A2

Scale: 1:200 @ A4

0 2M 8M



#### Date:

22-03-23

#### Drawn By:

Joel Gray

#### Drg No:

01