

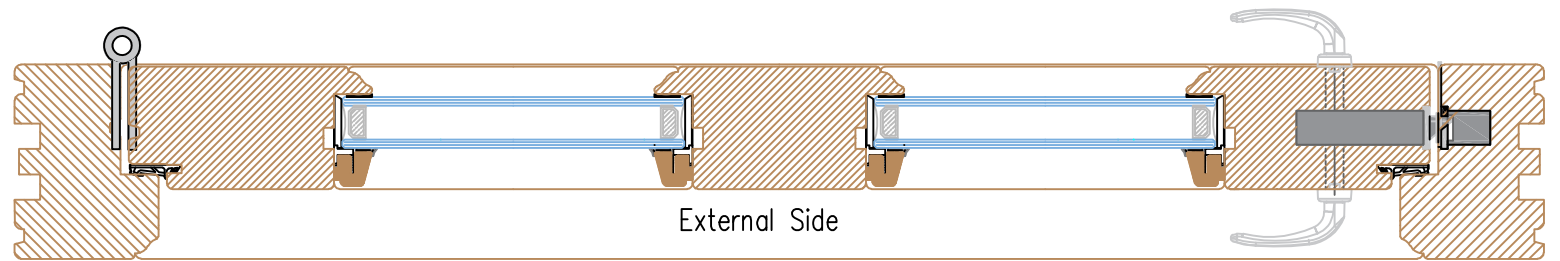
Elevation Sectional Drawing of External Glazed Cords & Weights
Casement

- 159mm O/A Frame Thickness.
- 92mm External Frame Head & Jamb Lambs Profile Liners.
- Standard Picture Frame Staff Bead Fitted.
- 68x159mm Frame cill
- Sash Profile Shown is Lambs Tongue Profile.
- 68x58mm Sash Stiles and Top Rail.
- 82x58 Sash Bottom Rail
- 45x58 meeting rails.
- 24mm Insulated Double Glazed Units with 18x16 beads located on Security Glazing Clips.
- Horn Profile 07 Shown, others available on request.

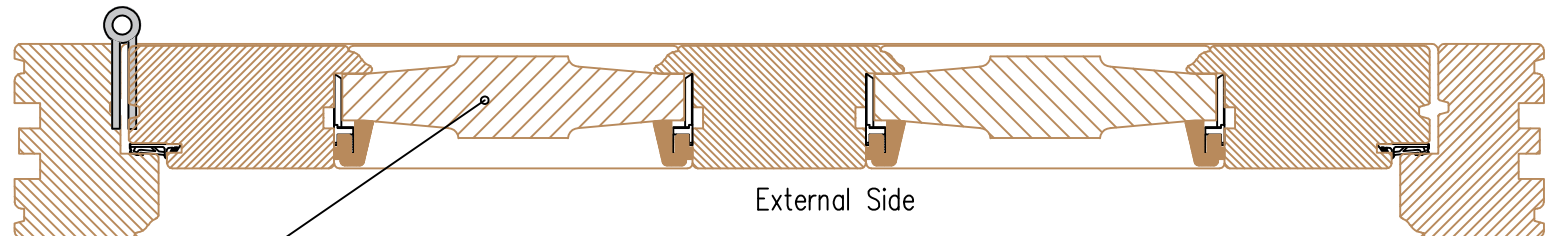


Standard Specification for 58mm Open In Doorset

Horizontal Cross Section B – B

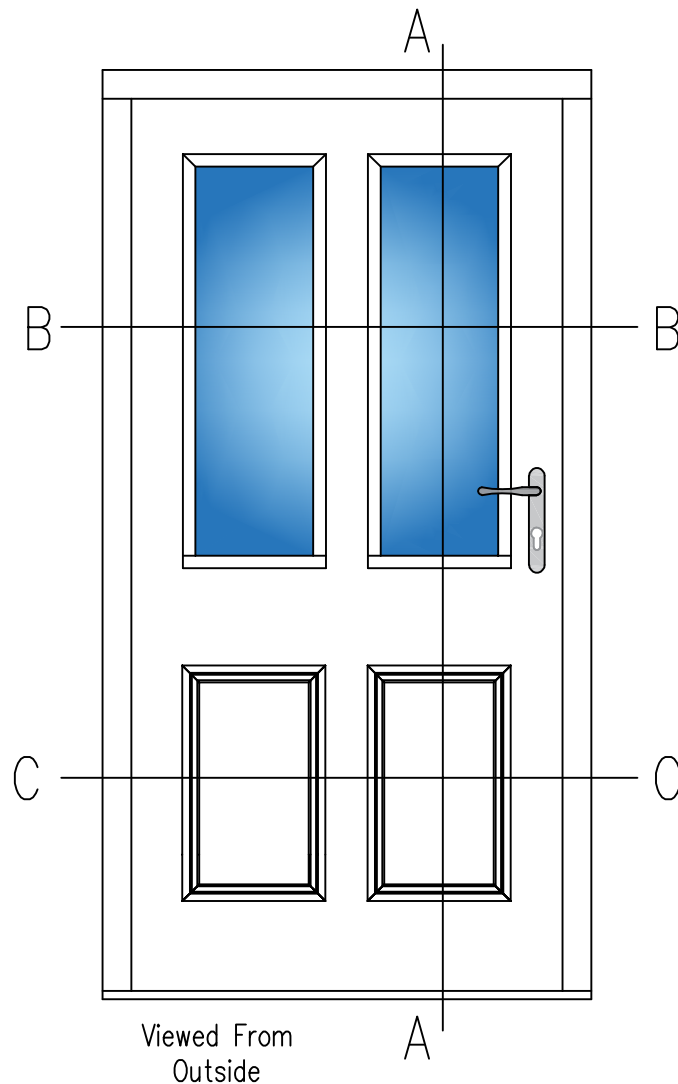


Horizontal Cross Section C – C



Raised & Fielded Panel

Vertical Cross Section A – A



Title: 58mm External Glazed Open In Doorset		
Drawn By: DK	Scale: N.T.S	Drawing No:
Checked By: MMCL	Date: Feb 2017	DSIN_001

© These drawings are the copyright Property of Heron Joinery and should not be replicated without the written permission of Heron Joinery.

N.B Heron Joinery reserves the right to change any of the Drawing details without consent or notification.

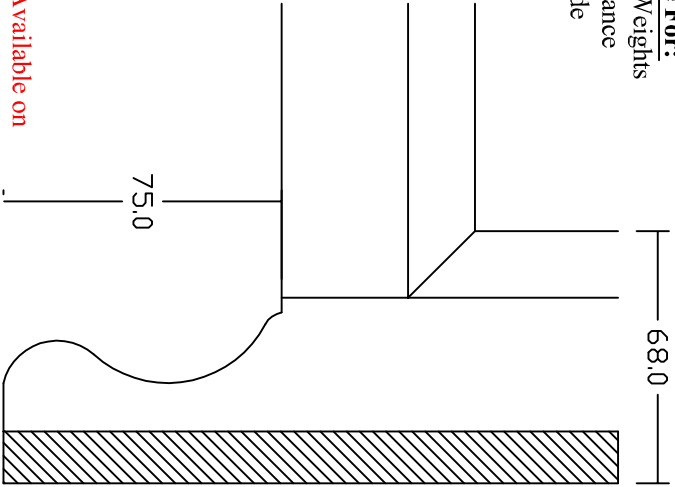
Alternative Timber Weather Bar to Aluminum Weather Bar shown fitted.

- 92x68mm Frame Head & Jambs shown with Lambs Tongue Profile (Other available on request).
- 108x58mm Door Stiles and Top Rail, 194mm Mid Rail and Bottom Rail, 118mm Muntin Rail. Profile shown is Lambs Tongue. (Others available on request)
- 24mm Double Glazing units fitted to door. 18x16mm Beads secured with Security Clips. Glazed panes have a Ventilated Timber Block fitted at bottom. (other Glazing Systems available on Request)
- Door hung on 3 Yale Adjustable Hinges (4no depending on size and weight) and fitted with Paddock 3-Point locking System and Lever/lever Handle and Cylinder Fitted. Other Handle Options & Locking systems available on request.)
- Matt Alum Stormguard Proline AM3EX Threshold Fitted to Cill. (Other Threshold Options available on request)
- Doorset is Part Q & PAS 24 Compliant. (Please contact office for Glazing and Hardware Specification for PAS 24.)

NB. Please see sales office for profile, glass and hardware options.

OPTION 1

Available For:
Cords & Weights
Spiral Balance
Tilt & Slide

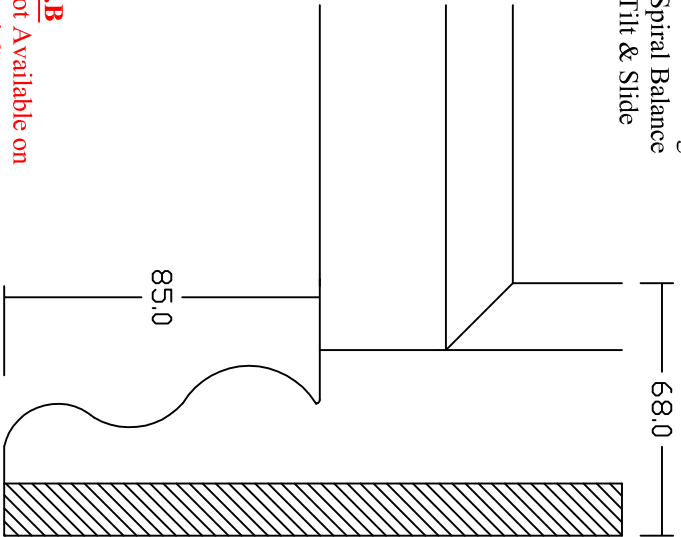


N.B
Not Available on
Dual Casement

Title		
Heron Joinery <i>Crafting Security is our motto</i>		
Drawn By	Scale	Drawing No.
Checked By	Date	

OPTION 2

Available For:
Cords & Weights
Spiral Balance
Tilt & Slide

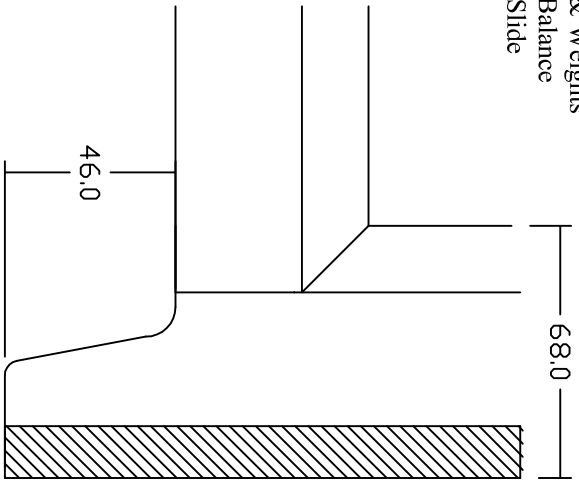


N.B
Not Available on
Dual Casement

Title		
Heron Joinery <i>Crafting Security is our motto</i>		
Drawn By	Scale	Drawing No.
Checked By	Date	

OPTION 3

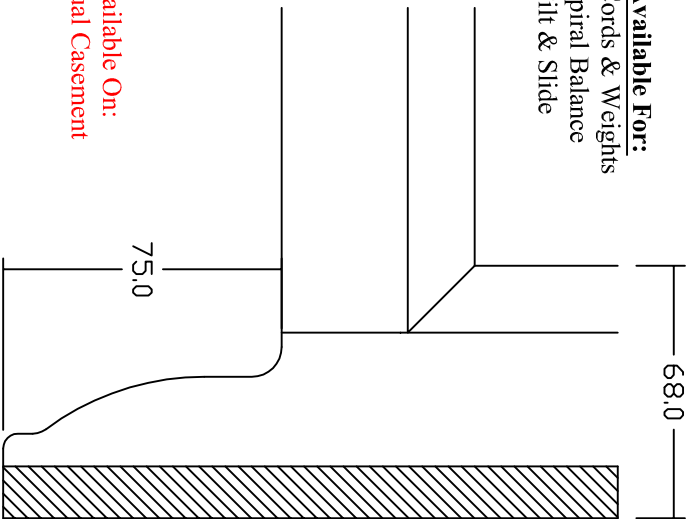
Available For:
Dual Turn Casement
Cords & Weights
Spiral Balance
Tilt & Slide



Title		
Horn 03 - 68x45mm		
Drawn By	Scale	Drawing No.
Checked By	Date	
DK	N/A	H03/68-45mm
UD	April 2012	

OPTION 4

Available For:
Cords & Weights
Spiral Balance
Tilt & Slide

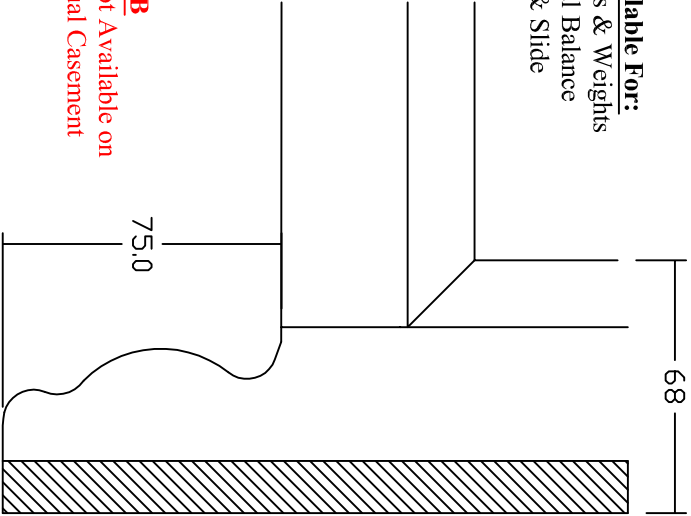


N.B
Not Available On:
• Dual Casement

Title		
Heron Joinery <i>Crafting Security is our motto</i>		
Drawn By	Scale	Drawing No.
Checked By	Date	

OPTION 5

Available For:
Cords & Weights
Spiral Balance
Tilt & Slide

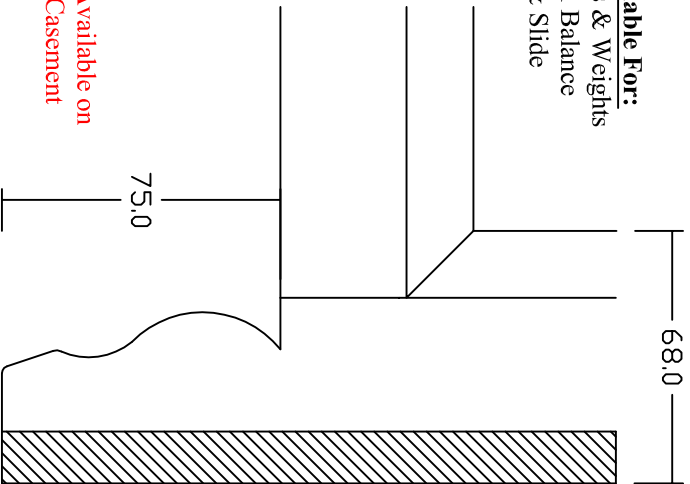


N.B
Not Available on
Dual Casement

Title		
Heron Joinery <i>Crafting Security is our motto</i>		
Drawn By	Scale	Drawing No.
Checked By	Date	

OPTION 6

Available For:
Cords & Weights
Spiral Balance
Tilt & Slide

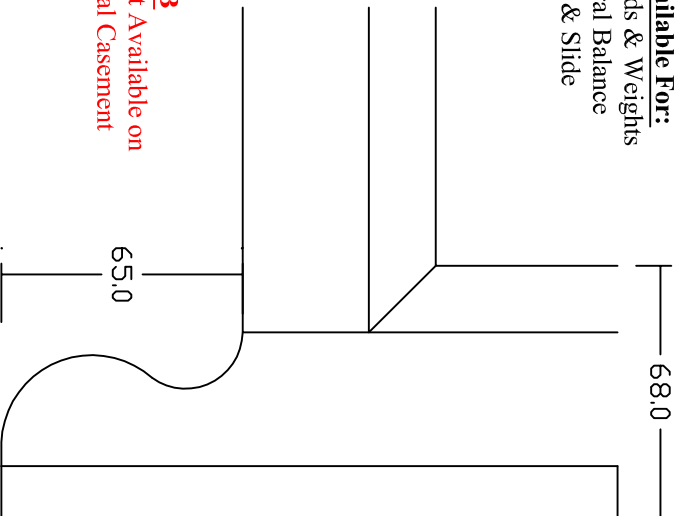


N.B
Not Available on
Dual Casement

Title		
Heron Joinery <i>Crafting Security is our motto</i>		
Drawn By	Scale	Drawing No.
Checked By	Date	

OPTION 07

Available For:
Cords & Weights
Spiral Balance
Tilt & Slide



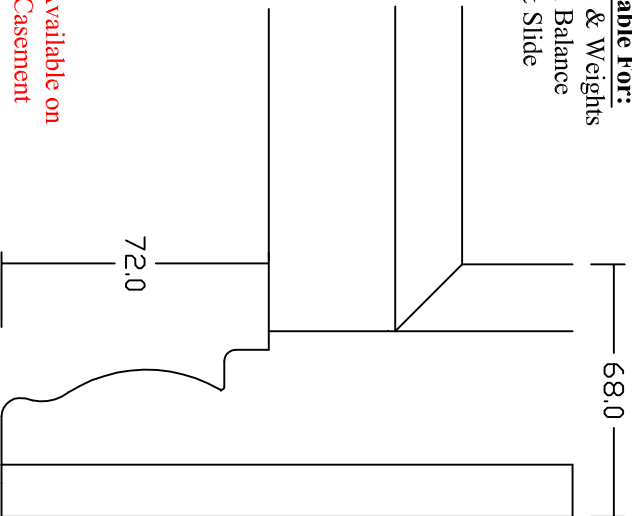
N.B
Not Available on
Dual Casement

Horn Profile is
similar to Horn 24.
Horn 24 is 75mm
in length

Title		
Horn Profile 07		
Drawn By	Scale	Drawing No.
Checked By	Date	
DK	NIS	H07/68
UD	OCT 2016	

OPTION 08

Available For:
Cords & Weights
Spiral Balance
Tilt & Slide

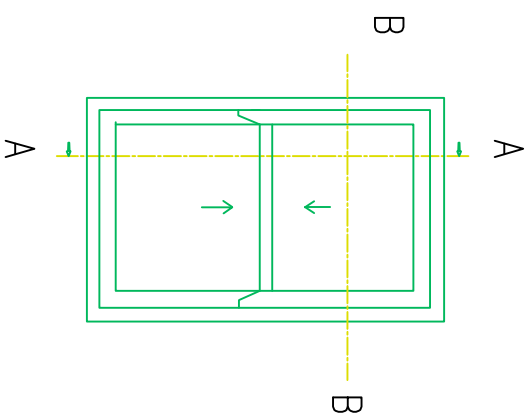
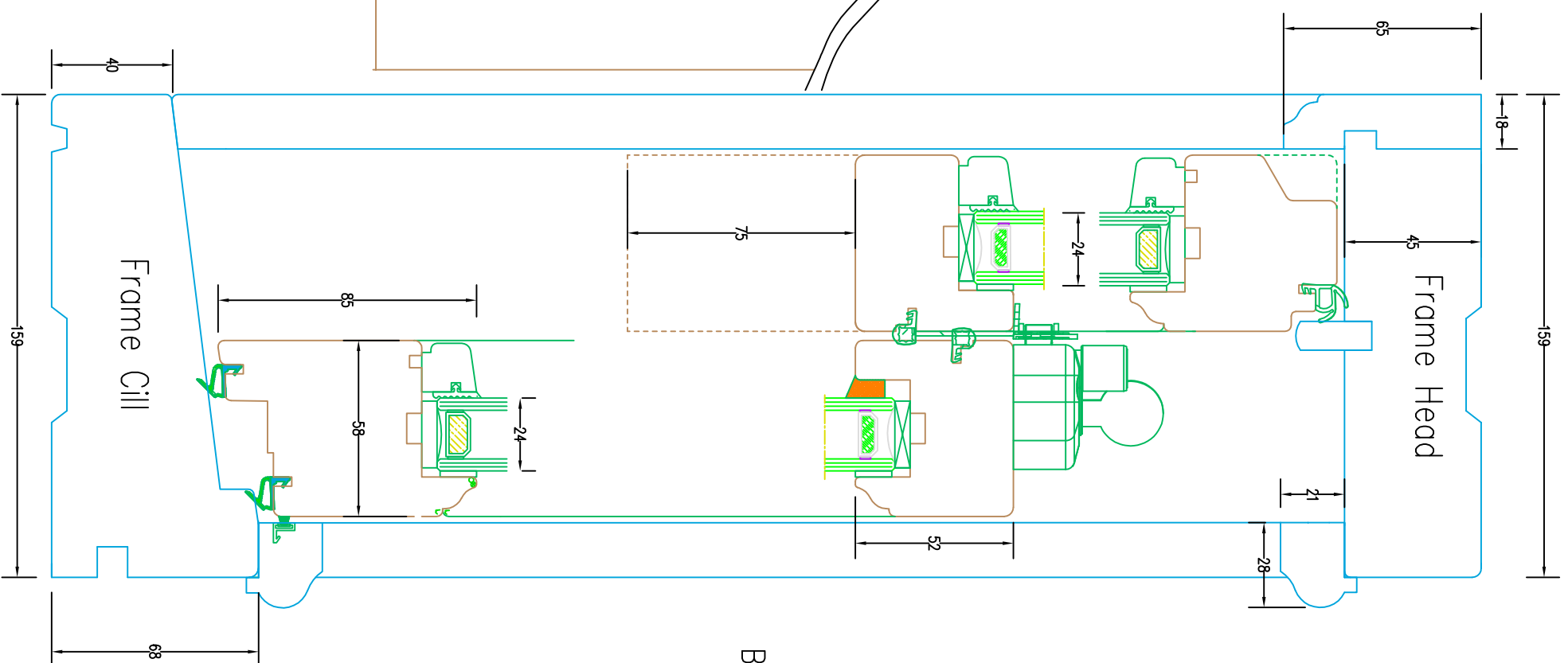


N.B
Not Available on
Dual Casement

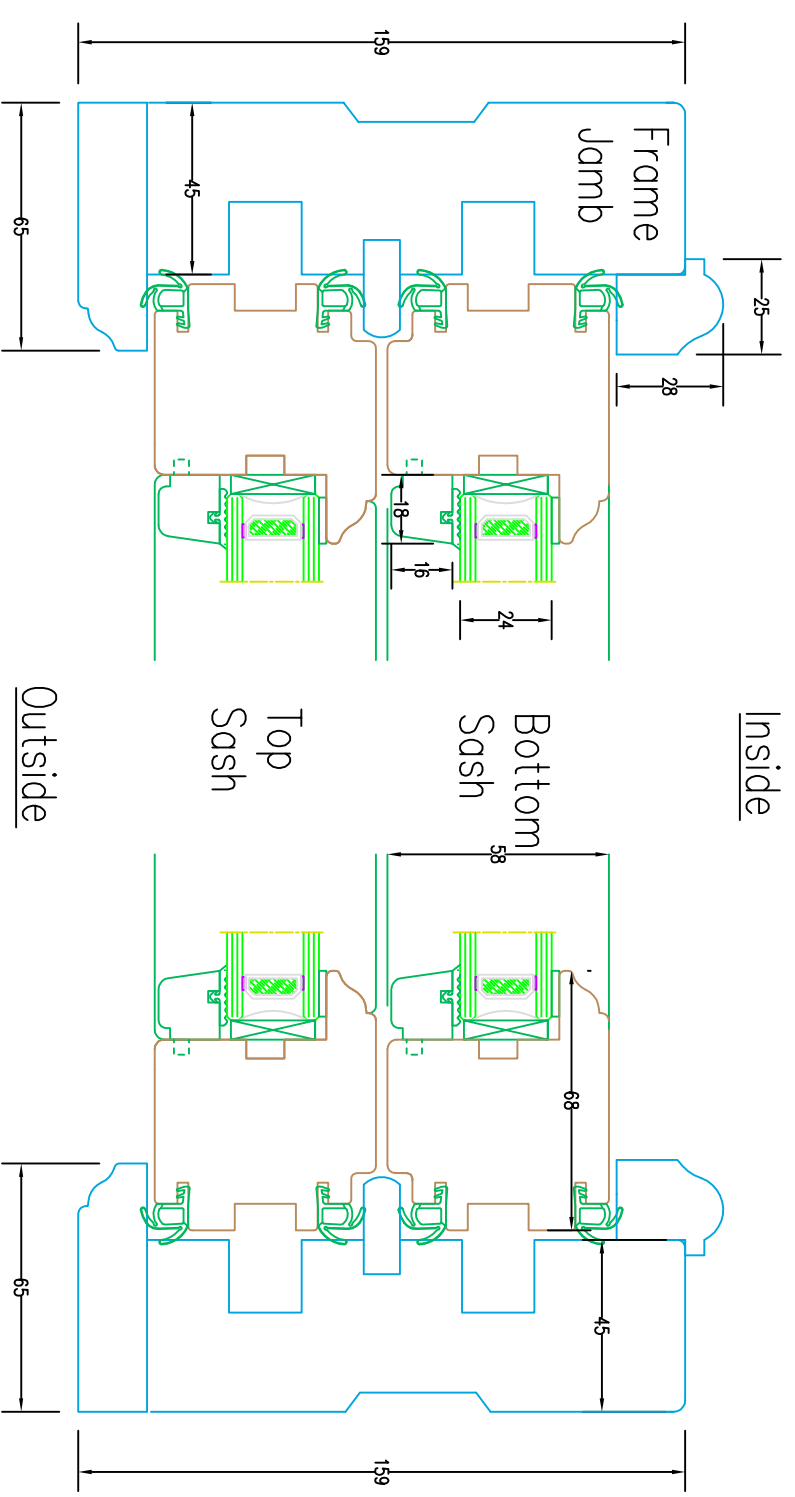
Used For:
Lakehouse Hartland Road

Title		
Heron Joinery <i>Crafting Security is our motto</i>		
Drawn By	Scale	Drawing No.
Checked By	Date	

Section AA



Section BB



Elevation Sectional Drawing of External Glazed Spiral Balance Casement

Spiral Balance Casement

- 68x58mm Sash stiles and head.
- 85x58 Sash Bottom Rail
- 52x58 meeting rails. (45mm Optional)
- 24mm Double Glazed Unit with 18X16 bead.
- Standard External Glazed Sash Profile. (Other profiles available on request)
- 65mm Standard External Frame Architrave (Other Profiles available on request)
- 159mm O/A Frame Thickness.
- Additional Horn profiles available on request.

Title: 58mm External Glazed Spiral balance Sliding Casement		
Drawn By: DK	Scale: N.T.S	Drawing No: EG58SB_001
Checked By:	Date: FEB 2013	