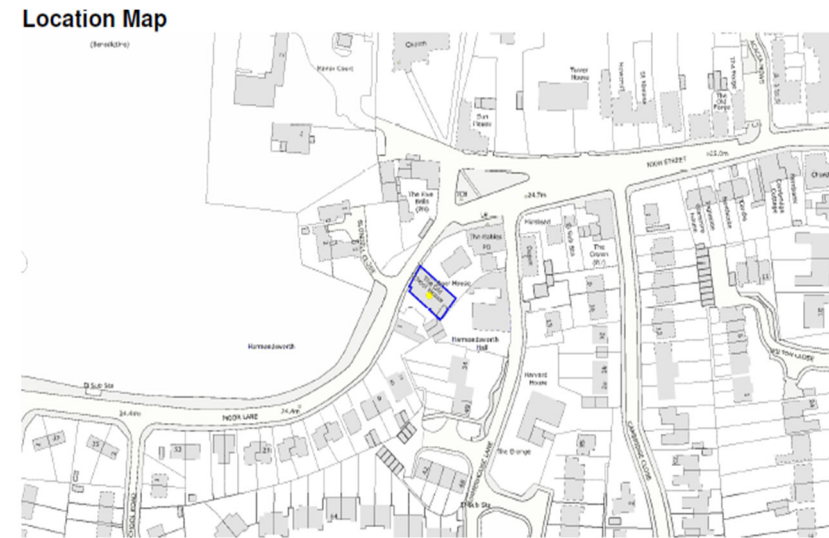


## Heritage statement

---

### Flats 1 to 4 Old School House Moor Lane UB7 0AR



**1. Statement of significance.** The Old School House in Moor Lane, Harmondsworth is locally listed and within the Harmondsworth Village Conservation Area.

The reason for designation is Architectural. Moor lane is a designated area of special architectural and historic interest, and therefore the character and appearance of the property need to be preserved and/or enhanced.

The Old School House Townscape contributes to the local character and street scene. The building was constructed before the 19<sup>th</sup> century and single storey. Historically the land for the school was given by Miss Ann Tillyer of the Lodge, Harmondsworth. The property is set in a restful area of Moor Lane, Harmondsworth, in the Ward of Heathrow Villages, Hillingdon. Recently been converted in residential flats, now is home for four mansard flats.

## Heritage statement

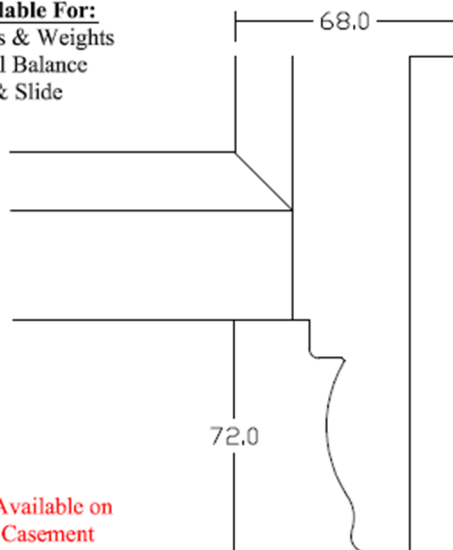
---

### Flats 1 to 4 Old School House Moor Lane UB7 0AR

The front elevation is in red brick, two gables with overhanging eaves, yellow brick quoins, sash windows with arched heads. Main entrance door through porch, now blocked. Brick arches over original divided sash windows. Now flats. Pitched roofed, with renewed slate. Existing windows are sash timber single glazed front doors are in timber.

#### 2. Description of Works:

Available For:  
Cords & Weights  
Spiral Balance  
Tilt & Slide



**WINDOWS:** Upgrade works to include full replacement of existing windows with new Timber casement windows and entrances door made by Heron Joinery.

The proposed submission includes *like for like* sliding windows sash, laminated redwood timber with hardwood external architrave. All sash windows have a horn profile, (selected for the cords & weights & spiral balance sliding sash windows was No 8 72mm long). See image 1,

All windows are double-glazing profile to be finished in HJ white RAL 9010, finishing Gloss Matt, to match the existing.

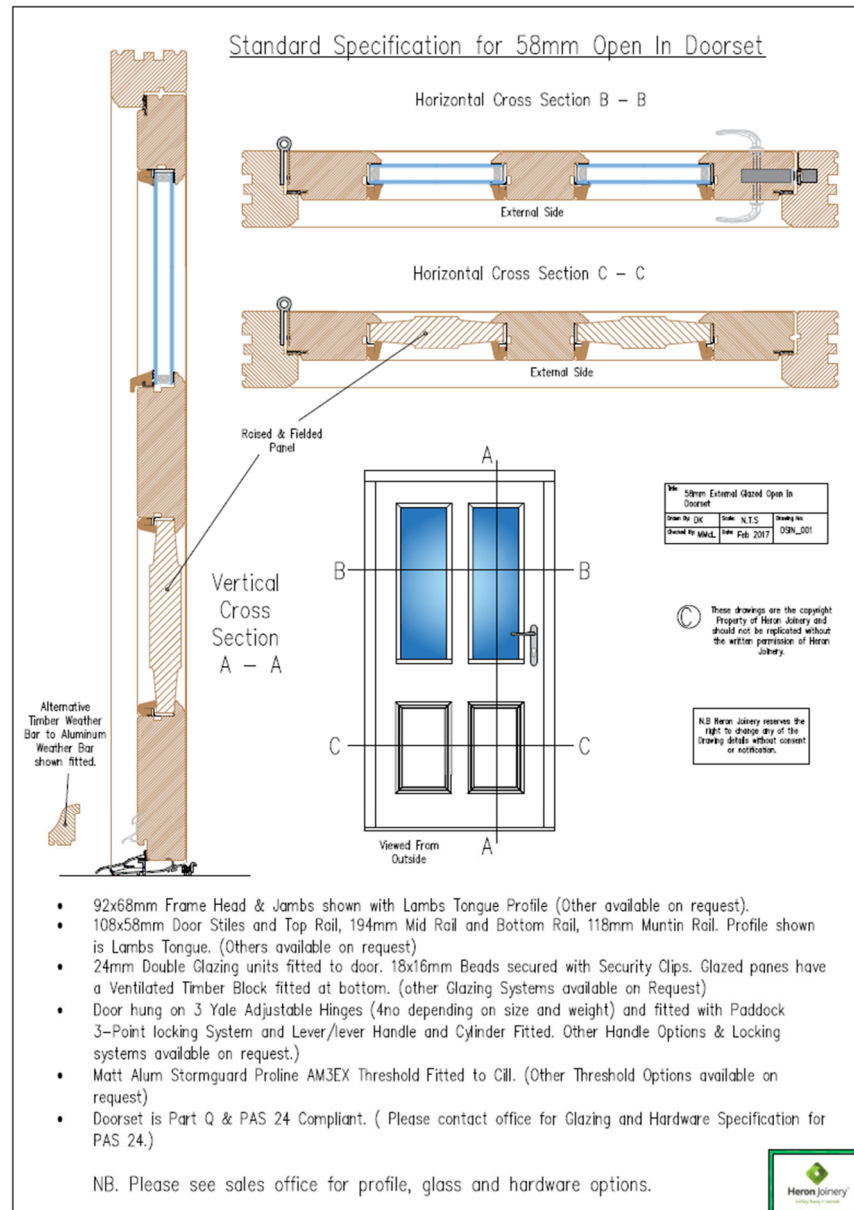
All windows have Secure by Design Specification, but please note any windows which are outside the SBD tested size range have been priced with Enhanced Security

Installing like-for-like double-glazed units will significantly improve the thermal efficiency, security, and fabric of the building, whilst retaining the current aesthetic.

Overall, the security of the block will improve as all existing windows are currently at the end of their life cycle and beyond economic repair.

## Heritage statement

### Flats 1 to 4 Old School House Moor Lane UB7 0AR



## Heritage statement

---

### Flats 1 to 4 Old School House Moor Lane UB7 0AR

#### FRONT ENTRANCE DOOR:

Flat NO. 1, & 3 \_ Frame is timber laminated redwood and sapele openers with glazed fan lights, the door leaf is grooved.. The door panel has grooved decorated door leaf. The Colour is Ultramarine Blue Ral 5002, with white door frame HK White finishing Gloss Matt.

Flat NO.2\_ Frame is timber laminated redwood and sapele openers with two glazed vertical panels. The Colour is Ral 5002 Ultramarine Blue, with white door frame HK White finishing Gloss Matt

Flat NO.1\_ Front Entrance door, timber laminated redwood frame and sapele openers. Colour Factory finished dual colour, Door Ral 9005 (Black). frame HK White finishing Gloss Matt.

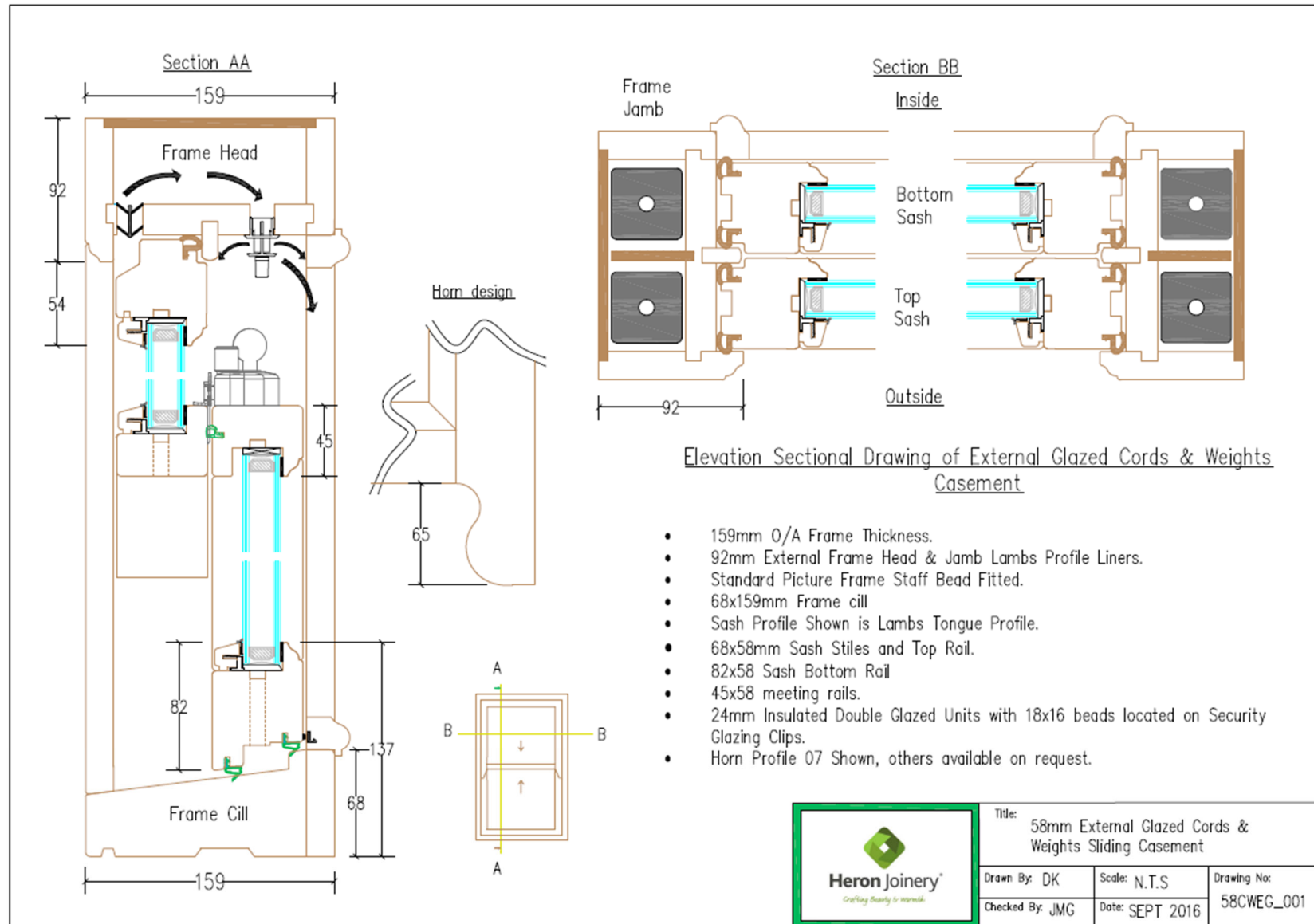
Flat NO.4\_ Frame is timber laminated redwood and sapele openers with two glazed vertical panels and glazed fan light. The Colour is Ral 5002 Ultramarine Blue, with white door frame HK White finishing Gloss Matt

Flat NO.4\_ Timber casement door frame French style with two door leaf double glazed,

Door and Windows to achieve a u-value of 1.4w/m2k

## Heritage statement

### Flats 1 to 4 Old School House Moor Lane UB7 0AR



## Heritage statement

---

### Flats 1 to 4 Old School House Moor Lane UB7 0AR

#### EXTERNAL DECORATION:

External communal and fascia re-decorations like for like

#### **3. Design Consideration**

There will be no visual impact because of the proposals other than preservation of the character and overall, the design intent is to keep with the character of the building/ conservation area and as such are compliant with policy.

#### **4. Access:**

There is no access design issues affected by these proposals.

#### **5. Relevant Planning History:**

The property is locally listed and within the Harmondsworth Village Conservation Area.



## Heritage statement

---

### Flats 1 to 4 Old School House Moor Lane UB7 0AR

#### 6. Photo





## Heritage statement

---

### Flats 1 to 4 Old School House Moor Lane UB7 0AR

