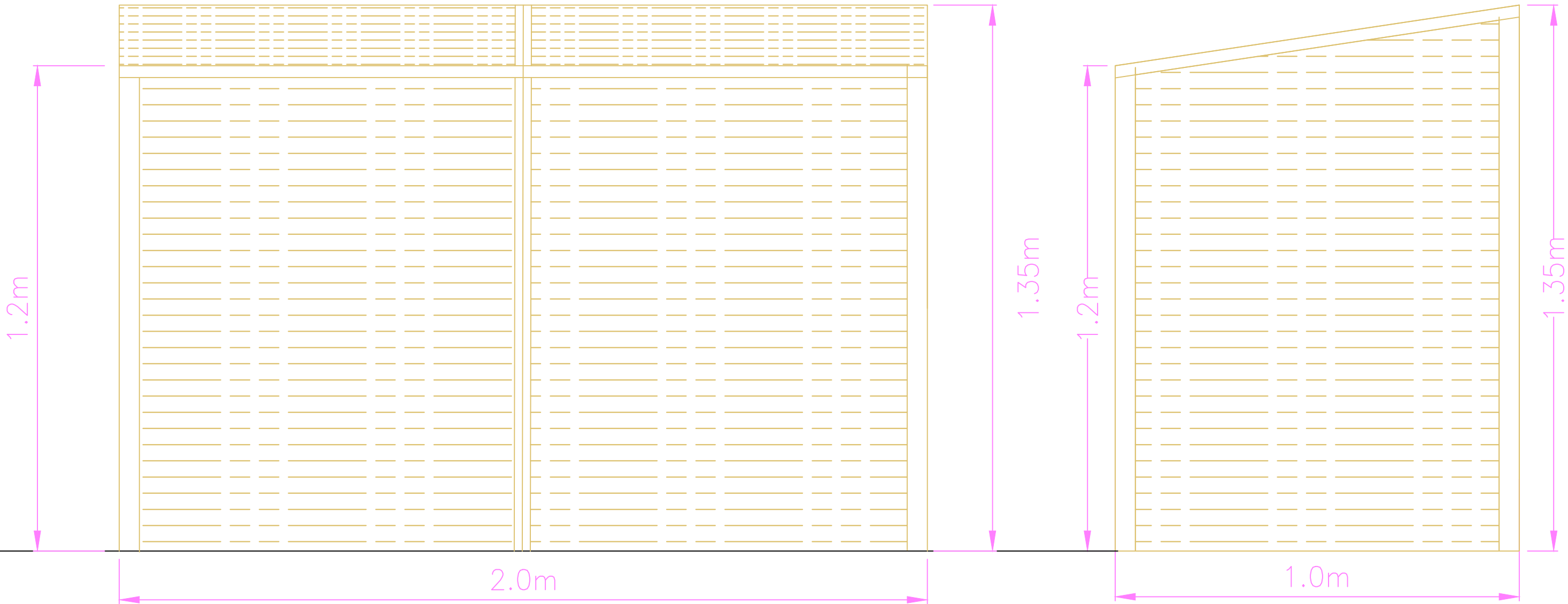
	40 WISE LANE		title		PROPOSED BIN STORAGE TO NEW & EXISTING RESIDENTIAL UNITS	
	MILL HILL		project		247 West End Road Ruislip HA4 6QR	
	LONDON NW7 2RE		drawing no		ABC391/ 3000	rev
	MOB: 07946 872537		drawn by		R. L	contract no. ABC391
	www.homesdesignltd.co.uk		scale		1:10 @ A3	date 08/2024

PROVIDE FOR NEW UNIT (247-A) & EXISTING UNIT (247) TO BE PROVIDED WITH 1-WASTE AND 1-RECYCLE AND ADDITIONAL 1-GREEN WASTE FOR GARDEN BIN. EACH BIN TO MEET PLANNING POLICIES; 240-LITER CAPACITY WHEELIE BINS

(BIN SIZE: Depth: 740, Width: 580, Height: 1100)
ALL BINS LOCATED AT FRONT FOR MEANS OF COLLECTIONS AND STORED WITHIN TIMBER STORAGE WHICH THE DETAIL OF TIMBER BIN CLOSURE PROVIDED ON DRAWING ABC391/ 3000



FACING ELEVATION OF BIN STORAGE (1.35m MAX HEIGHT TO 1.2m MIN HEIGHT AND 2.0m WIDE)

SIDE ELEVATION OF BIN STORAGE (1.35m MAX HEIGHT TO 1.2m MIN HEIGHT AND 2.0m WIDE)