

Design & Access Statement

David Lloyd Northwood
Padel Courts

David Lloyd
— CLUBS —



©GOOGLE

CONTENTS

1. INTRODUCTION4

2. SITE AND SURROUNDING CONTEXT5

3. PADEL COURTS9

4. DESIGN PROPOSAL10

5. ACCESS11

ILLUSTRATIONS

FIG. 1 SITE LOCATION4

FIG. 2 EXISTING TENNIS COURTS ON PROPOSED SITE5

FIG. 3 EXISTING SITE PLAN.....6

FIG. 4 PROPOSED SITE PLAN7

FIG. 5 AERIAL VIEW8

FIG. 6 PADEL COURT PLAN & ELEVATIONS.....9

FIG. 7 PADEL COURT PLAN & ELEVATIONS WITH CANOPY9

FIG. 8 TYPICAL PADEL COURT 3D RENDER.....10

FIG. 9 TYPICAL PADEL COURT IMAGE.....10

FIG 10. TYPICAL PADEL SOCIAL IMAGE10

FIG. 11 TYPICAL PADEL COURT CANOPY IMAGES.....11



Fig. 1 Site Location

1. Introduction

This Design and Access Statement has been prepared by Hadfield Cawkwell Davidson to accompany the full planning application for the provision of new Padel Courts on the site of existing tennis courts at David Lloyd Northwood.

Application Overview

This document is to be read in conjunction with the application drawings, scheduled below:

- A-PL-001 Location Plan
- A-PL-002 Existing Site Plan
- A-PL-003 Proposed Site Plan
- A-PL-004 Existing Site Plan (Extract)
- A-PL-005 Proposed Site Plan (Extract)
- A-PL-010 Padel Court Plan & Elevations
- A-PL-011 Padel Court Plan & Elevations with Canopy
- A-PL-012 Padel Social Plan and Elevation



Fig. 2 Existing Tennis Courts On Proposed Site

2. Site & Surrounding Context

2.1 Location

The existing David Lloyd Leisure club is located west of Northwood centre. The club is accessed from Duck’s Hill Road (A4180), and is located in a predominantly residential area.

2.2 Access

David Lloyd Northwood is well connected to existing infrastructure and is in close proximity to the A4180. Bus services from Northwood are regular with the closest stop estimated 7 minutes away, ensuring the club is accessible to all the local community.

2.3 Existing building and site

The existing David Lloyd leisure club sits to the north west of the site. The building uses a dedicated car park, and the building’s principal frontage faces east. The proposed application area for the additional facilities is located to the south of the existing club, in an area currently occupied by two existing tennis courts.

2.4 Surrounding context

The club is bound to the north by fields and Northwood Cricket Club, fields to the west and south, and a lake and residential area to the east.

2.5 Existing landscaping and Ecology

On the south and east sides of the existing tennis courts, the proposed site is shielded by a row of trees and hedgerows. The topography of the site is predominantly flat.

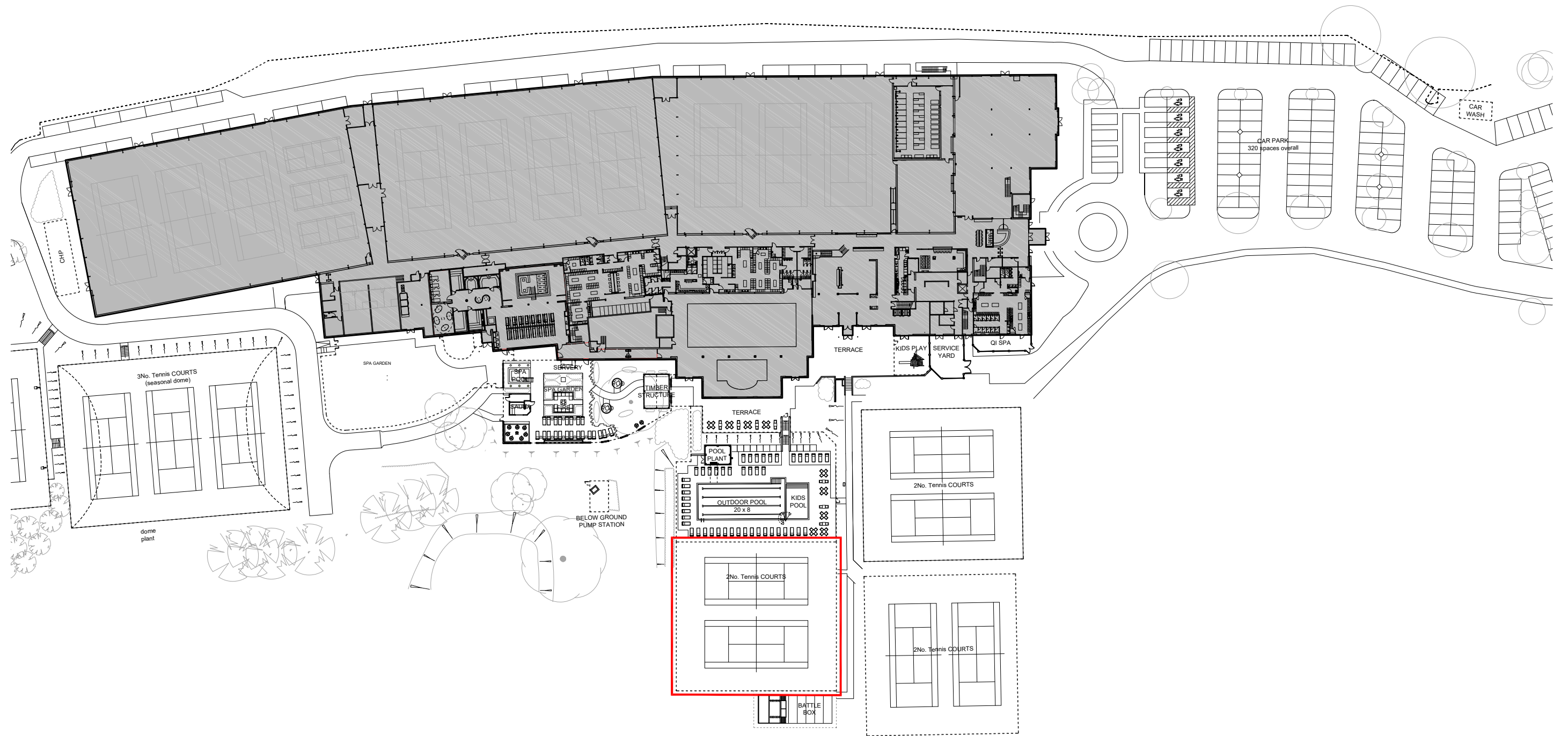


Fig. 3 Existing Site Plan



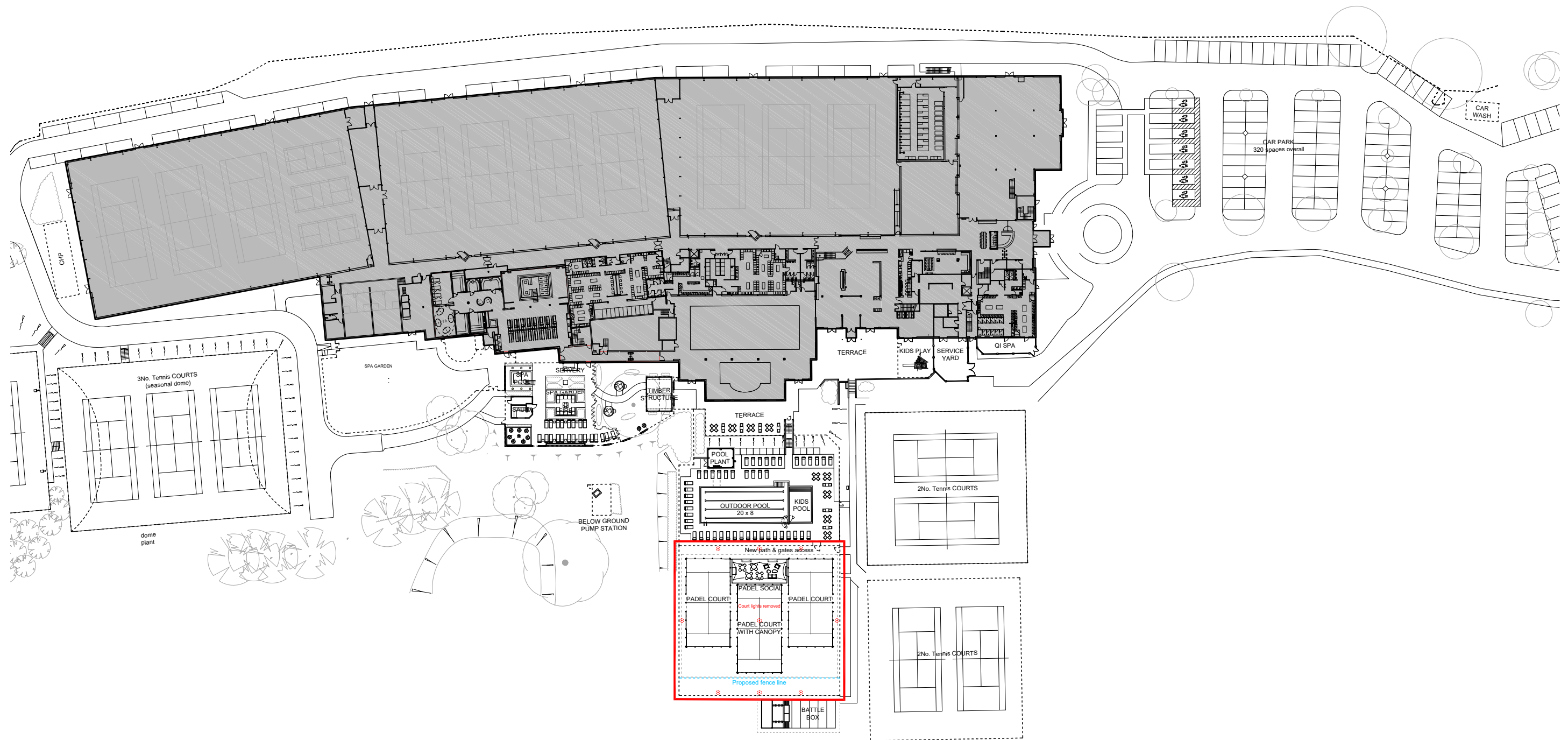


Fig. 4 Proposed Site Plan








- KEY:**
-  BUILDING ENTRANCE
 -  SITE OF PROPOSED PADEL COURTS
 -  SITE ACCESS

Fig. 5 Aerial View

3. Padel Courts

Padel tennis is a form of tennis that is easy to play, fun and extremely sociable. It is played mainly in a doubles format on an enclosed court about a third of the size of a tennis court and can be played in groups of mixed ages and abilities, as it is not power dominant. The rules are broadly the same as tennis, although you serve underhand and the Perspex walls are used as part of the game with the ball allowed to bounce off them.

Padel is one of the fastest growing sports across continental Europe, with over six million people currently playing in Spain alone. As of November 2020 there are around 6,000 active padel players across Britain. There are also currently 107 padel courts at 52 clubs – a number that is set to grow substantially over the coming years.

David Lloyd are at the forefront of this tennis revolution in the UK and are now proposing all of their new clubs to be provided with premium Padel facilities.

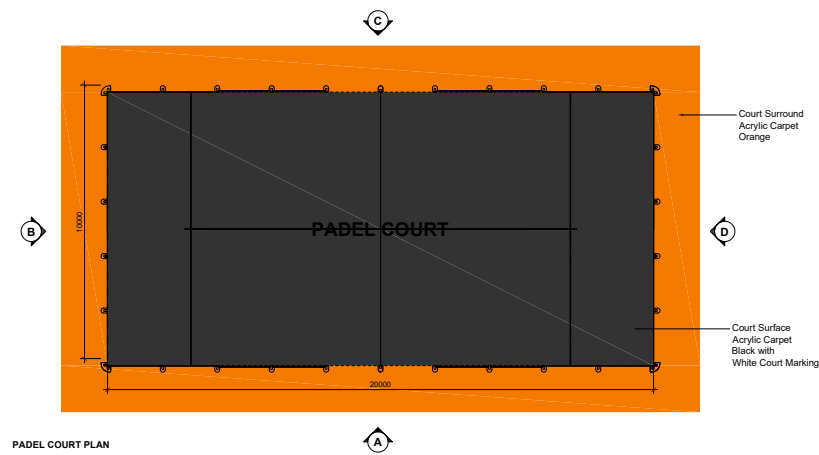


Fig. 6 Padel Court Plan & Elevations

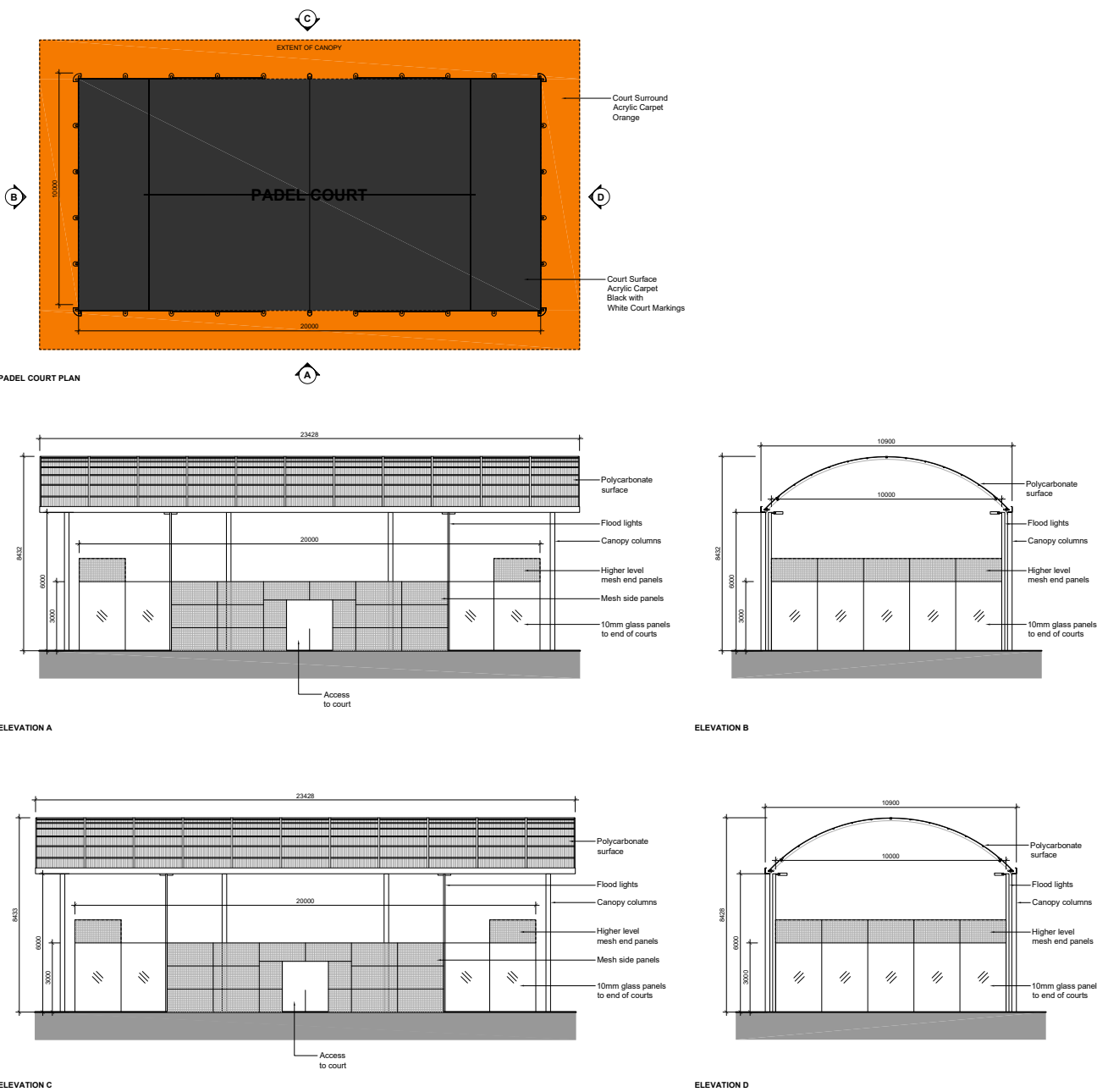


Fig. 7 Padel Court Plan & Elevations with Canopy

4. Design Proposal

It is proposed to replace 2 existing tennis courts with 3 no. padel courts, 1 of these having a padel court cover.

Designed to stay true to the sport's origins, these padel courts will feature a pillars type structure, anti-injury mesh infill panels and 10mm approved glass resulting in attractive and minimalist aesthetics. The playing surface will be the latest technology in artificial grass, ensuring that these facilities will be attractive to everyone from total beginners to seasoned players.

The 4no. 240W LED projectors used to evenly light the space offer a large reduction in potential energy use when compared to traditional halide lamps, with longer life and greater eco-efficiency.

The padel courts will be accompanied by a padel social space, featuring seating, bag storage unit, TV unit, planters and a canopy structure.

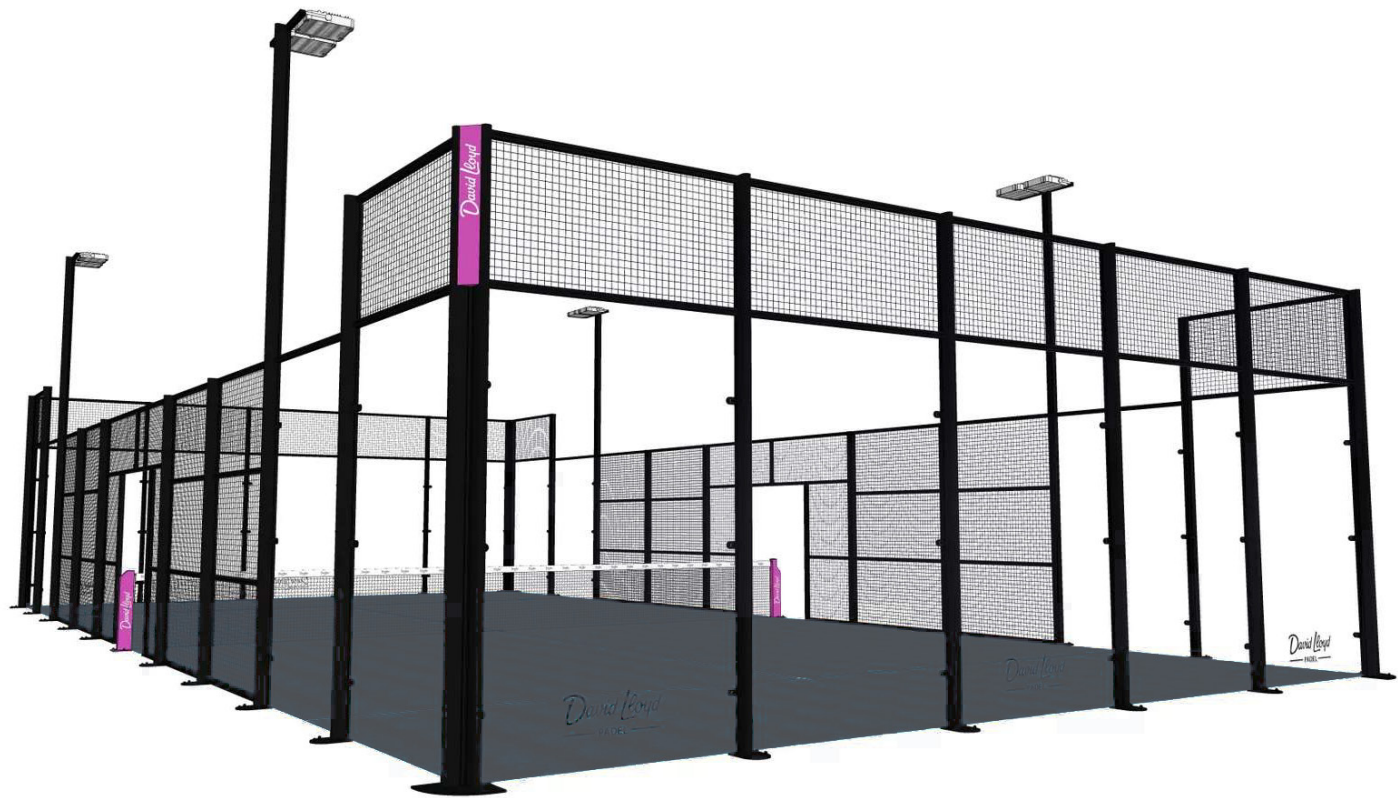


Fig. 8 Typical Padel Court 3D Render



Fig. 9 Typical Padel Court Image



Fig. 10 Typical Padel Social Image



The canopy is an elegant structure that allows the maximum amount of light and has a minimal footprint that is only slightly bigger than the padel court. A solid galvanized steel posted structure with a high tech polycarbonate roof covering held in aluminium extrusions ensuring the weather will be kept at bay throughout the year.



Fig. 11 Typical Padel Court Canopy Images

5. Access

5.1 Vehicular and transport links

There are no proposed changes to the site access and transport links.

5.2 Disabled Access

The David Lloyd Club has allocated disabled parking and full level access throughout with disabled changing facilities and appropriate sporting and leisure activities. Level access is to be used across the proposed works to promote free movement of all members throughout the facility.

5.3 Wayfinding

The directional and information signage adopted in the club will be supplemented with pictograms or symbols, wherever possible.

Design & Access Statement prepared by:

Hadfield Cawkwell Davidson Limited

13 Broomgrove Road

Sheffield, S10 2LZ

tel. 0114 266 8181

www.hcd.co.uk

2023-154_DLC David Lloyd Northwood_October 2024_P01