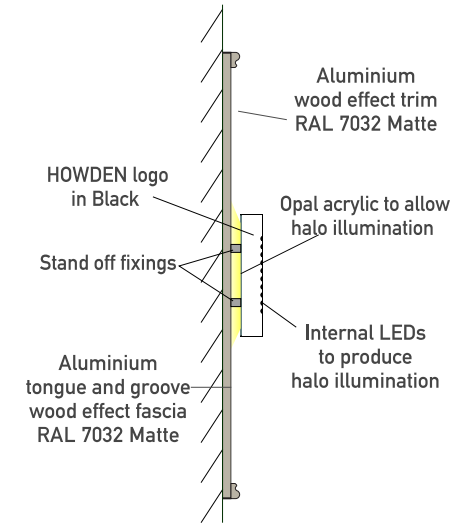


Sign 1.



5530mm x 1180mm x 35mm aluminium tongue and groove wood effect sign, powder-coated Ral 7032 matte with trim to match, and 1no 1550mm x 325mm x 60mm internally illuminated (285cdm2) 'HOWDEN' logo in matt black on stand-off fixings and 1no set 180mm high 5mm black acrylic subsidiary lettering fixed directly to face panels.
Max cap height 325mm. Ground clearance 2.9mtr.



Section scale 1:20

Client:
HOWDEN

Project:
50 High Street
Ruislip
HA4 7AN

Drg No.
HOW/RUISLIP/PL2

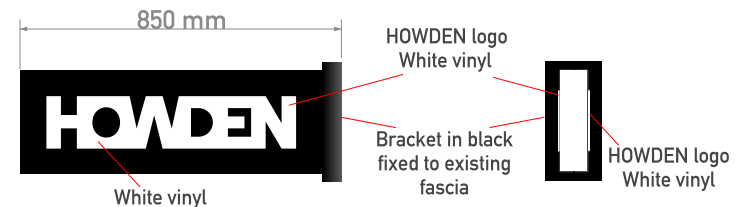
Scale:
1:50/1:20 @A4

Drawn by: Date:
TAH 22/09/23

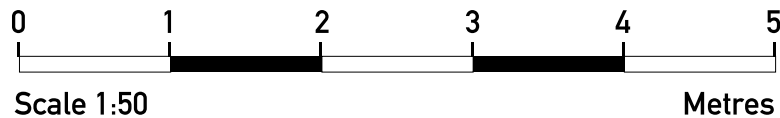
Sign 2.



850mm x 315mm Fabricated aluminium projecting sign in Matte black with White vinyl Howden Logo to face non-illuminated.
Max cap height 140mm. Ground clearance 4.6mtr. Max projection 850mm



Section scale 1:20



DB SIGN
ASSOCIATES
LIMITED

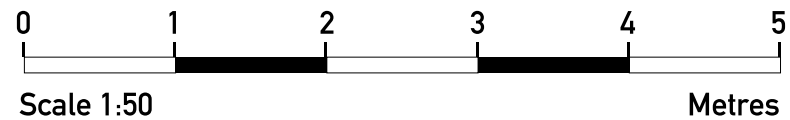
Dukeries Ind. Est.
Claylands Avenue
Workop, Notts.
S81 7BQ

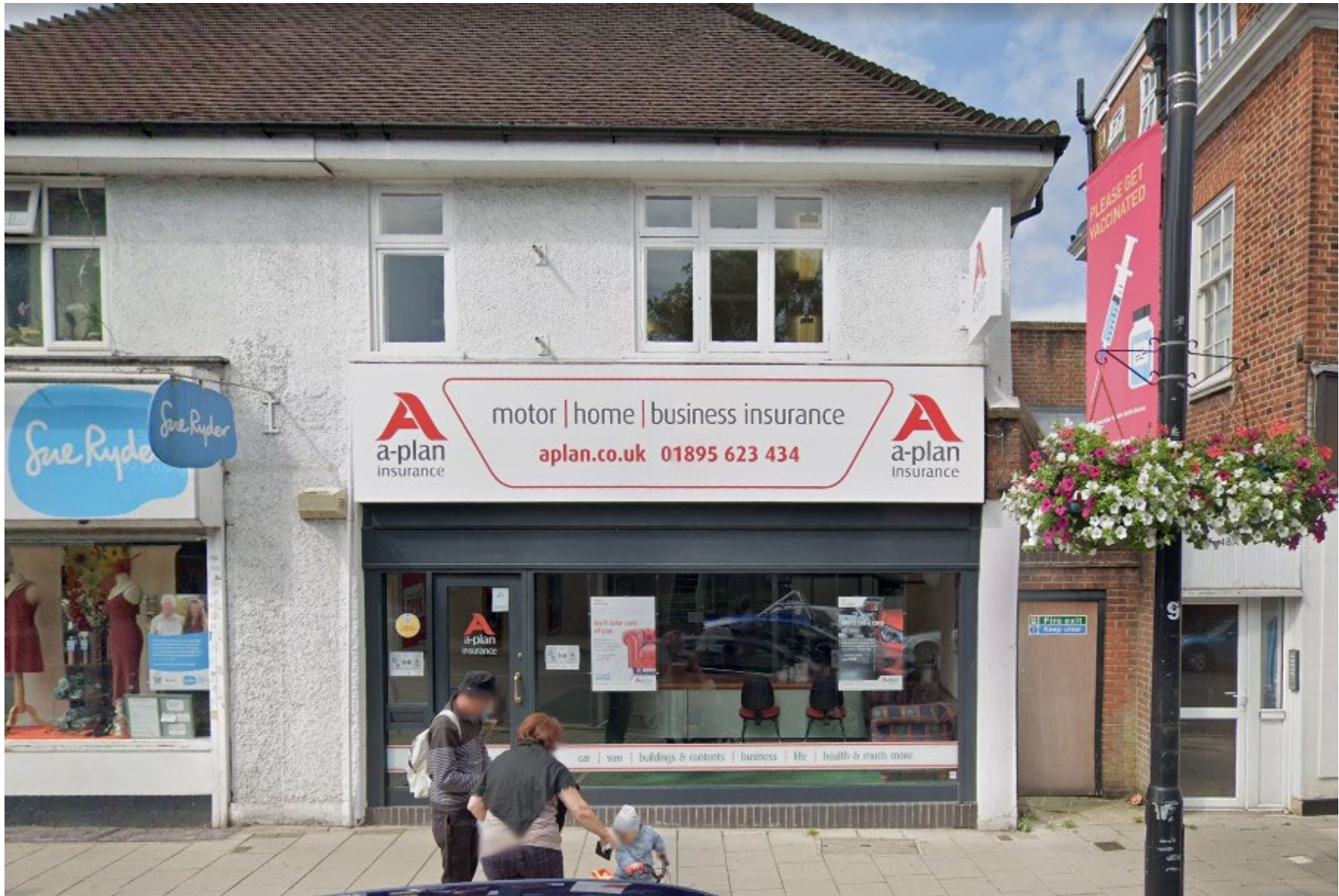
Tel: 01909 472922
www.dbsigns.com

WE MAKE YOUR MARQUE



Proposed visual interpretation





Existing signage

